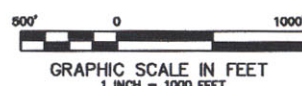


Pad Location



SECTION CORNER
LOCATION BASED ON GLO
RECORD INFORMATION

FIELD SURVEYED SECTION
CORNER LOCATIONS

FIELD SURVEYED WELL
LOCATION

CALCULATED BOTTOM
HOLE LOCATION

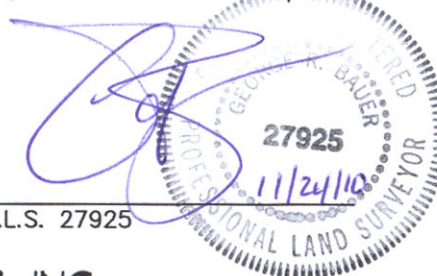
THIS WELL LOCATION PLAT WAS PREPARED FOR BERRY PETROLEUM COMPANY TO LOCATE THE SCHOOL HOUSE POINT OM07B B21 696 WELL, 782 FEET FROM THE NORTH LINE AND 1177 FEET FROM THE EAST LINE IN THE NE1/4 NE1/4 OF SECTION 21, T. 6 S., R. 96 W. OF THE 6TH P.M. GARFIELD COUNTY, COLORADO.

REFERENCE NOTES

- 1) T. 6 S., R. 96 W., 6TH P.M. GLO PLAT.
- 2) U.S.G.S. QUAD: FORKED GULCH, CO
- 3) ELEVATIONS BASED ON N.A.V.D. 1988
- 4) LATITUDES AND LONGITUDES ARE BASED ON NAD 83, COLORADO CENTRAL ZONE.
- 5) GPS OPERATOR ROBERT WOOD, OBSERVED A PDOP OF 2.1.
- 6) ALL GPS OBSERVATIONS ARE IN COMPLIANCE WITH COGCC RULE NO. 215.
- 7) SURFACE AND BOTTOM HOLE LOCATIONS ARE MEASURED 90' FROM SECTION LINES.

SURVEYOR'S CERTIFICATE

I, George R. Bauer: a Professional Land Surveyor in the State of Colorado do hereby certify that this Survey was made under my direct supervision, and that this Plat represents said Survey.



COLORADO P.L.S. 27925



CONSTRUCTION SURVEYS, INC.
0012 SUNRISE BLVD.
SILT, CO 81652
(970)876-5753

SURVEYED:	11
DRAFTED:	11
CHECKED:	11

VIEW: 1E

SURVEYED: 11/10/10	SCALE: 1" = 1000'
DRAFTED: 11/19/10	DWG: Berry/Old Mtn B21-696.dwg
CHECKED: 11/24/10	SHEET: 1 of 11