



Drilling Services

Proposal

BERRY PETROLEUM COMPANY

BERRY 11-5D

GARFIELD COUNTY, CO

WELL FILE:PLAN 1

JUNE 25, 2007

Weatherford International Ltd.

2690 Oil Drive
Casper, Wyoming 82604
+1.307.265.1413 Main
+1.307.235.3958 Fax
www.weatherford.com



Berry Petroleum Company

BERRY 11-5D
1603' FSL, 725' FEL
SECTION 11-T6S-R97W
GARFIELD COUNTY, CO.

SITE DETAILS

BERRY 11-5D PAD
 SECTION 11-T6S-R97W
 1615' FSL, 753' FEL

Site Centre Latitude: 39°32'04.776N
 Longitude: 108°10'50.664W

Ground Level: 8151.00
 Positional Uncertainty: 0.00
 Convergence: -1.69

SECTION DETAILS

Sec	MD	Inc	Azi	TVD	+N/-S	+E/-W	DLeg	TFace	VSec	Target
1	0.00	0.00	224.68	0.00	0.00	0.00	0.00	0.00	0.00	
2	2000.00	0.00	224.68	2000.00	0.00	0.00	0.00	0.00	0.00	
3	2250.11	5.00	224.68	2249.79	-7.76	-7.67	2.00	224.68	10.91	
4	3304.76	5.00	224.68	3300.42	-73.15	-72.33	0.00	0.00	102.87	
5	3804.97	0.00	224.68	3800.00	-88.67	-87.67	1.00	180.00	124.69	PBHL_11-5D
6	9165.97	0.00	224.68	9161.00	-88.67	-87.67	0.00	224.68		

WELL DETAILS

Name	+N/-S	+E/-W	Northing	Easting	Latitude	Longitude	Slot
BERRY 11-5D	-13.42	27.61	1630772.21	2244050.85	39°32'04.643N	108°10'50.312W	N/A

TARGET DETAILS

Name	TVD	+N/-S	+E/-W	Northing	Easting	Shape
PBHL_11-5D	9161.00	-88.67	-87.67	1630686.17	2243960.61	Rectangle (100x200)

FIELD DETAILS

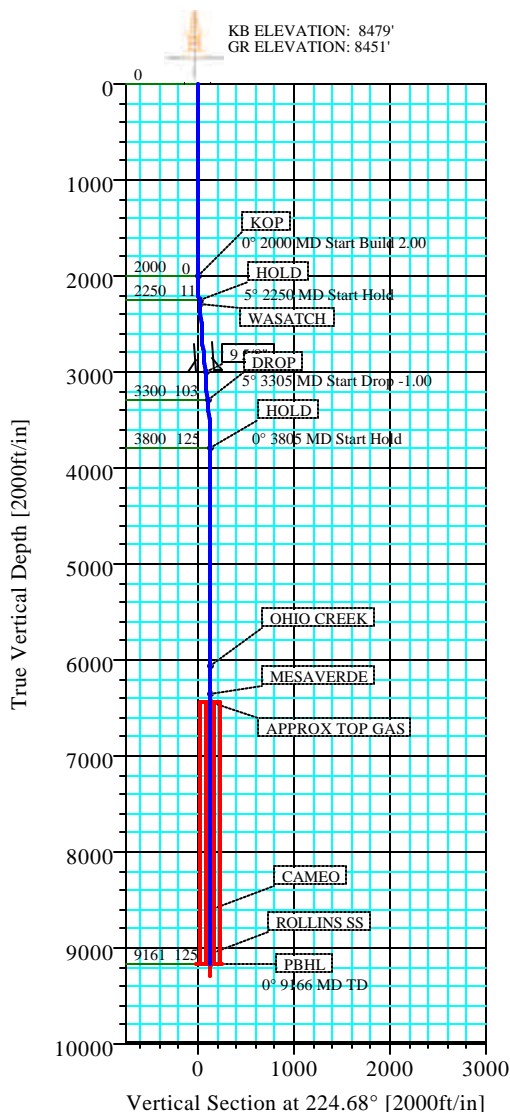
GARFIELD COUNTY (NAD 83)
 COLORADO

Geodetic System: US State Plane Coordinate System 1983
 Ellipsoid: GRS 1980
 Zone: colorado, central zone
 Magnetic Model: bggm2006

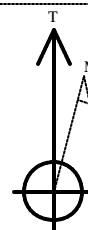
System Datum: Mean Sea Level
 Local North: True North

FORMATION TOP DETAILS

No.	TVDPath	MDPath	Formation
1	2301.00	2301.51	WASATCH
2	6061.00	6065.97	OHIO CREEK
3	6361.00	6365.97	MESAVERDE
4	6436.00	6440.97	APPROX TOP GAS
5	8611.00	8615.97	CAMEO
6	9061.00	9065.97	ROLLINS SS



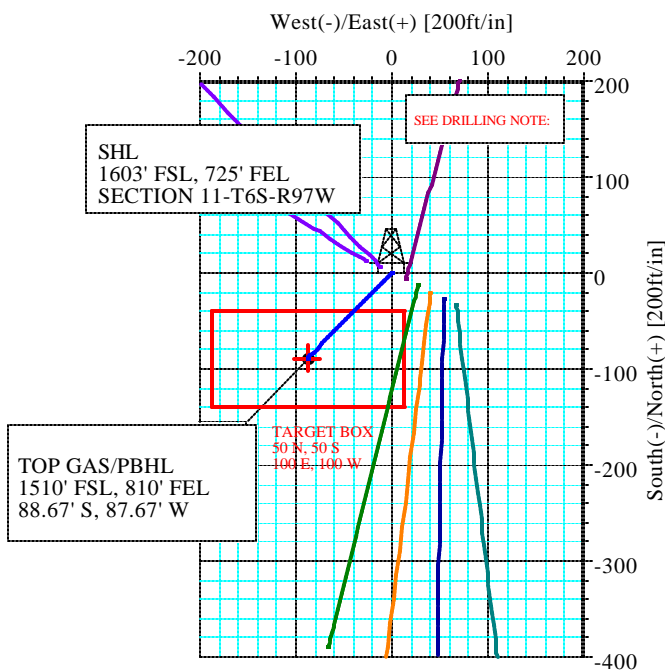
-DRILLING NOTE-
 TO ACCOUNT FOR THE 240° DRIFT IN AZIMUTH, AIM
 FOR THE NE SIDE OF PBHL, AND
 BE IN THE TARGET WINDOW BY THE TOP GAS AND STAY
 WITHIN THE WINDOW TO TD. DO NOT GO OUTSIDE THE
 WINDOW.



Azimuths to True North
 Magnetic North: 10.98°

Magnetic Field
 Strength: 52702nT
 Dip Angle: 65.88°
 Date: 6/25/2007
 Model: bggm2006

TOTAL CORRECTION TO TRUE NORTH 10.98°



Weatherford

Plan: Plan #1 (BERRY 11-5D/1)

Created By: ROBERT SCOTT

Date: 6/25/2007

Weatherford International, Ltd.

PLAN REPORT

Company: BERRY PETROLEUM COMPANY			Date: 6/25/2007		Time: 13:01:46		Page: 1	
Field: GARFIELD COUNTY (NAD 83)			Co-ordinate(NE) Reference:		Well: BERRY 11-5D, True North			
Site: BERRY 11-15D PAD			Vertical (TVD) Reference:		SITE 8179.0			
Well: BERRY 11-5D			Section (VS) Reference:		Well (0.00N,0.00E,224.68Azi)			
Wellpath: 1			Survey Calculation Method:		Minimum Curvature		Db: Sybase	

Field: GARFIELD COUNTY (NAD 83) COLORADO			
Map System: US State Plane Coordinate System 1983		Map Zone: colorado, central zone	
Geo Datum: GRS 1980		Coordinate System: Well Centre	
Sys Datum: Mean Sea Level		Geomagnetic Model: bggm2006	

Site: BERRY 11-15D PAD SECTION 11-T6S-R97W 1615' FSL, 753' FEL			
Site Position:	Northing: 1630786.44 ft	Latitude:	39 32 4.776 N
From: Geographic	Easting: 2244023.65 ft	Longitude:	108 10 50.664 W
Position Uncertainty: 0.00 ft		North Reference:	True
Ground Level: 8151.00 ft		Grid Convergence:	-1.69 deg

Well: BERRY 11-5D 1603' FSL, 725' FEL				Slot Name:			
Well Position:	+N/-S -13.42 ft	Northing: 1630772.21 ft	Latitude:	39 32 4.643 N			
	+E/-W 27.61 ft	Easting : 2244050.85 ft	Longitude:	108 10 50.312 W			
Position Uncertainty:	0.00 ft						

Wellpath: 1				Drilled From: Surface			
Current Datum: SITE				Tie-on Depth: 0.00 ft			
Magnetic Data: 6/25/2007				Above System Datum: Mean Sea Level			
Field Strength: 52702 nT				Declination: 10.98 deg			
Vertical Section: Depth From (TVD)				Mag Dip Angle: 65.88 deg			
	ft	+N/-S ft	+E/-W ft	Direction deg			
0.00		0.00	0.00	224.68			

Plan: Plan #1		Date Composed: 6/25/2007	
Principal: Yes		Version: 1	
		Tied-to: From Surface	

Plan Section Information										
MD ft	Incl deg	Azim deg	TVD ft	+N/-S ft	+E/-W ft	DLS deg/100ft	Build deg/100ft	Turn deg/100ft	TFO deg	Target
0.00	0.00	224.68	0.00	0.00	0.00	0.00	0.00	0.00	0.00	
2000.00	0.00	224.68	2000.00	0.00	0.00	0.00	0.00	0.00	0.00	
2250.11	5.00	224.68	2249.79	-7.76	-7.67	2.00	2.00	0.00	224.68	
3304.76	5.00	224.68	3300.42	-73.15	-72.33	0.00	0.00	0.00	0.00	
3804.97	0.00	224.68	3800.00	-88.67	-87.67	1.00	-1.00	0.00	180.00	
9165.97	0.00	224.68	9161.00	-88.67	-87.67	0.00	0.00	0.00	224.68	PBHL_11-5D

Survey										
MD ft	Incl deg	Azim deg	TVD ft	N/S ft	E/W ft	VS ft	DLS deg/100ft	Build deg/100ft	Turn deg/100ft	Comment
2000.00	0.00	224.68	2000.00	0.00	0.00	0.00	0.00	0.00	0.00	KOP
2100.00	2.00	224.68	2099.98	-1.24	-1.23	1.75	2.00	2.00	0.00	
2200.00	4.00	224.68	2199.84	-4.96	-4.91	6.98	2.00	2.00	0.00	
2250.11	5.00	224.68	2249.79	-7.76	-7.67	10.91	2.00	2.00	0.00	HOLD
2300.00	5.00	224.68	2299.49	-10.85	-10.73	15.26	0.00	0.00	0.00	
2301.51	5.00	224.68	2301.00	-10.95	-10.82	15.39	0.00	0.00	0.00	WASATCH
2400.00	5.00	224.68	2399.11	-17.05	-16.86	23.98	0.00	0.00	0.00	
2500.00	5.00	224.68	2498.73	-23.25	-22.99	32.70	0.00	0.00	0.00	
2600.00	5.00	224.68	2598.35	-29.45	-29.12	41.42	0.00	0.00	0.00	
2700.00	5.00	224.68	2697.97	-35.65	-35.25	50.14	0.00	0.00	0.00	
2800.00	5.00	224.68	2797.59	-41.85	-41.38	58.86	0.00	0.00	0.00	
2900.00	5.00	224.68	2897.21	-48.05	-47.51	67.58	0.00	0.00	0.00	
3000.00	5.00	224.68	2996.83	-54.25	-53.64	76.30	0.00	0.00	0.00	
3003.19	5.00	224.68	3000.00	-54.45	-53.84	76.57	0.00	0.00	0.00	9 5/8"
3100.00	5.00	224.68	3096.45	-60.45	-59.77	85.02	0.00	0.00	0.00	

Weatherford International, Ltd.

PLAN REPORT

Company: BERRY PETROLEUM COMPANY Field: GARFIELD COUNTY (NAD 83) Site: BERRY 11-15D PAD Well: BERRY 11-5D Wellpath: 1	Date: 6/25/2007 Co-ordinate(NE) Reference: Well: BERRY 11-5D, True North Vertical (TVD) Reference: SITE 8179.0 Section (VS) Reference: Well (0.00N,0.00E,224.68Azi) Survey Calculation Method: Minimum Curvature Db: Sybase
--	---

Survey

MD ft	Incl deg	Azim deg	TVD ft	N/S ft	E/W ft	VS ft	DLS deg/100ft	Build deg/100ft	Turn deg/100ft	Comment
3200.00	5.00	224.68	3196.06	-66.65	-65.90	93.73	0.00	0.00	0.00	
3300.00	5.00	224.68	3295.68	-72.85	-72.03	102.45	0.00	0.00	0.00	
3304.11	5.00	224.68	3299.78	-73.11	-72.29	102.81	0.00	0.00	0.00	DROP
3304.76	5.00	224.68	3300.42	-73.15	-72.33	102.87	0.00	0.00	0.00	
3400.00	4.05	224.68	3395.37	-78.49	-77.61	110.38	1.00	-1.00	0.00	
3500.00	3.05	224.68	3495.17	-82.90	-81.96	116.58	1.00	-1.00	0.00	
3600.00	2.05	224.68	3595.07	-86.06	-85.09	121.02	1.00	-1.00	0.00	
3700.00	1.05	224.68	3695.04	-87.98	-86.99	123.73	1.00	-1.00	0.00	
3800.00	0.05	224.68	3795.03	-88.66	-87.67	124.69	1.00	-1.00	0.00	
3804.97	0.00	224.68	3800.00	-88.67	-87.67	124.69	1.00	-1.00	0.00	HOLD
3900.00	0.00	224.68	3895.03	-88.67	-87.67	124.69	0.00	0.00	0.00	
4000.00	0.00	224.68	3995.03	-88.67	-87.67	124.69	0.00	0.00	0.00	
4100.00	0.00	224.68	4095.03	-88.67	-87.67	124.69	0.00	0.00	0.00	
4200.00	0.00	224.68	4195.03	-88.67	-87.67	124.69	0.00	0.00	0.00	
4300.00	0.00	224.68	4295.03	-88.67	-87.67	124.69	0.00	0.00	0.00	
4400.00	0.00	224.68	4395.03	-88.67	-87.67	124.69	0.00	0.00	0.00	
4500.00	0.00	224.68	4495.03	-88.67	-87.67	124.69	0.00	0.00	0.00	
4600.00	0.00	224.68	4595.03	-88.67	-87.67	124.69	0.00	0.00	0.00	
4700.00	0.00	224.68	4695.03	-88.67	-87.67	124.69	0.00	0.00	0.00	
4800.00	0.00	224.68	4795.03	-88.67	-87.67	124.69	0.00	0.00	0.00	
4900.00	0.00	224.68	4895.03	-88.67	-87.67	124.69	0.00	0.00	0.00	
5000.00	0.00	224.68	4995.03	-88.67	-87.67	124.69	0.00	0.00	0.00	
5100.00	0.00	224.68	5095.03	-88.67	-87.67	124.69	0.00	0.00	0.00	
5200.00	0.00	224.68	5195.03	-88.67	-87.67	124.69	0.00	0.00	0.00	
5300.00	0.00	224.68	5295.03	-88.67	-87.67	124.69	0.00	0.00	0.00	
5400.00	0.00	224.68	5395.03	-88.67	-87.67	124.69	0.00	0.00	0.00	
5500.00	0.00	224.68	5495.03	-88.67	-87.67	124.69	0.00	0.00	0.00	
5600.00	0.00	224.68	5595.03	-88.67	-87.67	124.69	0.00	0.00	0.00	
5700.00	0.00	224.68	5695.03	-88.67	-87.67	124.69	0.00	0.00	0.00	
5800.00	0.00	224.68	5795.03	-88.67	-87.67	124.69	0.00	0.00	0.00	
5900.00	0.00	224.68	5895.03	-88.67	-87.67	124.69	0.00	0.00	0.00	
6000.00	0.00	224.68	5995.03	-88.67	-87.67	124.69	0.00	0.00	0.00	
6065.97	0.00	224.68	6061.00	-88.67	-87.67	124.69	0.00	0.00	0.00	OHIO CREEK
6100.00	0.00	224.68	6095.03	-88.67	-87.67	124.69	0.00	0.00	0.00	
6200.00	0.00	224.68	6195.03	-88.67	-87.67	124.69	0.00	0.00	0.00	
6300.00	0.00	224.68	6295.03	-88.67	-87.67	124.69	0.00	0.00	0.00	
6365.97	0.00	224.68	6361.00	-88.67	-87.67	124.69	0.00	0.00	0.00	MESAVERDE
6400.00	0.00	224.68	6395.03	-88.67	-87.67	124.69	0.00	0.00	0.00	
6440.97	0.00	224.68	6436.00	-88.67	-87.67	124.69	0.00	0.00	0.00	APPROX TOP GAS
6500.00	0.00	224.68	6495.03	-88.67	-87.67	124.69	0.00	0.00	0.00	
6600.00	0.00	224.68	6595.03	-88.67	-87.67	124.69	0.00	0.00	0.00	
6700.00	0.00	224.68	6695.03	-88.67	-87.67	124.69	0.00	0.00	0.00	
6800.00	0.00	224.68	6795.03	-88.67	-87.67	124.69	0.00	0.00	0.00	
6900.00	0.00	224.68	6895.03	-88.67	-87.67	124.69	0.00	0.00	0.00	
7000.00	0.00	224.68	6995.03	-88.67	-87.67	124.69	0.00	0.00	0.00	
7100.00	0.00	224.68	7095.03	-88.67	-87.67	124.69	0.00	0.00	0.00	
7200.00	0.00	224.68	7195.03	-88.67	-87.67	124.69	0.00	0.00	0.00	
7300.00	0.00	224.68	7295.03	-88.67	-87.67	124.69	0.00	0.00	0.00	
7400.00	0.00	224.68	7395.03	-88.67	-87.67	124.69	0.00	0.00	0.00	
7500.00	0.00	224.68	7495.03	-88.67	-87.67	124.69	0.00	0.00	0.00	
7600.00	0.00	224.68	7595.03	-88.67	-87.67	124.69	0.00	0.00	0.00	
7700.00	0.00	224.68	7695.03	-88.67	-87.67	124.69	0.00	0.00	0.00	
7800.00	0.00	224.68	7795.03	-88.67	-87.67	124.69	0.00	0.00	0.00	

Weatherford International, Ltd.

PLAN REPORT

Company: BERRY PETROLEUM COMPANY
Field: GARFIELD COUNTY (NAD 83)
Site: BERRY 11-15D PAD
Well: BERRY 11-5D
Wellpath: 1

Date: 6/25/2007	Time: 13:01:46	Page: 3
Co-ordinate(NE) Reference:	Well: BERRY 11-5D, True North	
Vertical (TVD) Reference:	SITE 8179.0	
Section (VS) Reference:	Well (0.00N,0.00E,224.68Azi)	
Survey Calculation Method:	Minimum Curvature	Db: Sybase

Survey

MD ft	Incl deg	Azim deg	TVD ft	N/S ft	E/W ft	VS ft	DLS deg/100ft	Build deg/100ft	Turn deg/100ft	Comment
7900.00	0.00	224.68	7895.03	-88.67	-87.67	124.69	0.00	0.00	0.00	
8000.00	0.00	224.68	7995.03	-88.67	-87.67	124.69	0.00	0.00	0.00	
8100.00	0.00	224.68	8095.03	-88.67	-87.67	124.69	0.00	0.00	0.00	
8200.00	0.00	224.68	8195.03	-88.67	-87.67	124.69	0.00	0.00	0.00	
8300.00	0.00	224.68	8295.03	-88.67	-87.67	124.69	0.00	0.00	0.00	
8400.00	0.00	224.68	8395.03	-88.67	-87.67	124.69	0.00	0.00	0.00	
8500.00	0.00	224.68	8495.03	-88.67	-87.67	124.69	0.00	0.00	0.00	
8600.00	0.00	224.68	8595.03	-88.67	-87.67	124.69	0.00	0.00	0.00	
8615.97	0.00	224.68	8611.00	-88.67	-87.67	124.69	0.00	0.00	0.00	CAMEO
8700.00	0.00	224.68	8695.03	-88.67	-87.67	124.69	0.00	0.00	0.00	
8800.00	0.00	224.68	8795.03	-88.67	-87.67	124.69	0.00	0.00	0.00	
8900.00	0.00	224.68	8895.03	-88.67	-87.67	124.69	0.00	0.00	0.00	
9000.00	0.00	224.68	8995.03	-88.67	-87.67	124.69	0.00	0.00	0.00	
9065.97	0.00	224.68	9061.00	-88.67	-87.67	124.69	0.00	0.00	0.00	ROLLINS SS
9100.00	0.00	224.68	9095.03	-88.67	-87.67	124.69	0.00	0.00	0.00	
9165.97	0.00	224.68	9161.00	-88.67	-87.67	124.69	0.00	0.00	0.00	PBHL_11-5D

Annotation

MD ft	TVD ft	
2000.00	2000.00	KOP
2250.11	2249.79	HOLD
3304.11	3299.78	DROP
3804.97	3800.00	HOLD
9165.97	9161.00	PBHL

Targets

Name	Description	Dir.	TVD ft	+N/-S ft	+E/-W ft	Map Northing ft	Map Easting ft	<---- Latitude ----> Deg Min Sec			<--- Longitude ---> Deg Min Sec				
PBHL_11-5D -Rectangle (100x200) -Plan hit target			9161.00	-88.67	-87.67	1630686.17	2243960.61	39	32	3.767	N	108	10	51.431	W

Weatherford International, Ltd.

Anticollision Report

Company:	BERRY PETROLEUM COMPANY	Date:	6/25/2007	Time:	12:54:01	Page:	1
Field:	GARFIELD COUNTY (NAD 83)	Co-ordinate(NE) Reference:	Well: BERRY 11-5D, True North				
Reference Site:	BERRY 11-15D PAD	Vertical (TVD) Reference:	SITE 8179.0				
Reference Well:	BERRY 11-5D	Db: Sybase					
Reference Wellpath:	1						

NO GLOBAL SCAN: Using user defined selection & scan criteria				Reference:	Plan: Plan #1
Interpolation Method:	MD	Interval:	100.00 ft	Error Model:	ISCWSA Ellipse
Depth Range:	0.00 to	14724.89 ft		Scan Method:	Closest Approach 3D
Maximum Radius:	10000.00 ft			Error Surface:	Ellipse

Plan: Plan #1	Date Composed:	6/25/2007
Principal: Yes	Version:	1
	Tied-to:	From Surface

Summary

<----- Offset Wellpath ----->	Reference	Offset	Ctr-Ctr	Edge	Separation	Warning	
Site	Well	Wellpath	MD ft	MD ft	Distance ft	Distance ft	Factor
BERRY 11-15D PAD	BERRY 11-16D	1 V0 Plan: Plan #1 V1	700.00	699.48	16.10	13.24	5.63
BERRY 11-15D PAD	BERRY 11-6D	1 V0 Plan: Plan #1 V1	1700.00	1699.87	15.64	8.29	2.13

Site: BERRY 11-15D PAD
Well: BERRY 11-16D
Wellpath: 1 V0 Plan: Plan #1 V1

Inter-Site Error: 0.00 ft

Reference MD ft	TVD ft	Offset MD ft	TVD ft	Semi-Major Axis Ref ft	Offset ft	TFO-HS deg	Offset Location North ft	East ft	Ctr-Ctr Distance ft	Edge Distance ft	Separation Factor	Warning
0.00	0.00	0.00	0.00	0.00	0.00	297.47	6.66	-12.81	14.44			No Data
100.00	100.00	100.00	100.00	0.08	0.08	297.47	6.66	-12.81	14.44	14.27	89.20	
200.00	200.00	200.00	200.00	0.31	0.31	297.47	6.66	-12.81	14.44	13.82	23.61	
300.00	300.00	300.00	300.00	0.53	0.53	297.47	6.66	-12.81	14.44	13.37	13.61	
400.00	400.00	400.00	400.00	0.76	0.76	297.47	6.66	-12.81	14.44	12.93	9.56	
500.00	500.00	500.00	500.00	0.98	0.98	297.47	6.66	-12.81	14.44	12.48	7.37	
600.00	600.00	600.00	600.00	1.20	1.20	297.47	6.66	-12.81	14.44	12.03	5.99	
700.00	700.00	699.48	699.46	1.43	1.43	299.38	7.89	-14.02	16.10	13.24	5.63	
800.00	800.00	798.73	798.57	1.65	1.65	303.29	11.58	-17.63	21.14	17.84	6.40	
900.00	900.00	897.50	896.96	1.88	1.89	306.83	17.68	-23.61	29.65	25.90	7.91	
1000.00	1000.00	995.56	994.30	2.10	2.14	309.33	26.13	-31.89	41.62	37.43	9.92	
1100.00	1100.00	1092.70	1090.28	2.33	2.43	310.99	36.84	-42.39	57.00	52.36	12.29	
1200.00	1200.00	1188.71	1184.58	2.55	2.75	312.10	49.71	-55.00	75.72	70.64	14.89	
1300.00	1300.00	1283.74	1277.28	2.78	3.11	312.87	64.64	-69.64	97.70	92.16	17.66	
1400.00	1400.00	1381.00	1371.85	3.00	3.51	313.39	80.81	-85.49	120.96	114.96	20.15	
1500.00	1500.00	1478.25	1466.43	3.23	3.93	313.74	96.98	-101.34	144.23	137.75	22.26	
1600.00	1600.00	1575.50	1561.01	3.45	4.37	314.00	113.16	-117.19	167.51	160.55	24.08	
1700.00	1700.00	1672.75	1655.59	3.68	4.81	314.19	129.33	-133.04	190.78	183.35	25.65	
1800.00	1800.00	1770.00	1750.17	3.90	5.26	314.34	145.50	-148.89	214.06	206.14	27.03	
1900.00	1900.00	1867.25	1844.75	4.13	5.71	314.46	161.67	-164.74	237.34	228.94	28.24	
2000.00	2000.00	1964.50	1939.33	4.35	6.17	314.56	177.84	-180.60	260.62	251.73	29.32	
2100.00	2099.98	2061.73	2033.88	4.58	6.63	89.85	194.01	-196.44	283.90	274.52	30.27	
2200.00	2199.84	2158.82	2128.30	4.81	7.10	90.42	210.15	-212.27	307.23	297.36	31.12	
2300.00	2299.49	2255.71	2222.53	5.04	7.56	91.61	226.26	-228.06	330.73	320.35	31.87	
2400.00	2399.11	2352.56	2316.71	5.28	8.03	92.93	242.37	-243.84	354.42	343.52	32.54	
2500.00	2498.73	2449.41	2410.90	5.53	8.50	94.09	258.47	-259.63	378.26	366.85	33.15	
2600.00	2598.35	2546.26	2505.09	5.77	8.97	95.10	274.58	-275.41	402.23	390.30	33.69	
2700.00	2697.97	2643.11	2599.28	6.02	9.44	96.01	290.68	-291.20	426.32	413.84	34.18	
2800.00	2797.59	2739.96	2693.46	6.28	9.91	96.81	306.79	-306.98	450.49	437.48	34.63	
2900.00	2897.21	2836.81	2787.65	6.53	10.38	97.54	322.89	-322.77	474.73	461.18	35.04	
3000.00	2996.83	2933.65	2881.84	6.79	10.85	98.19	339.00	-338.55	499.04	484.95	35.41	
3100.00	3096.45	3030.50	2976.02	7.05	11.32	98.79	355.10	-354.34	523.41	508.77	35.75	
3200.00	3196.06	3127.35	3070.21	7.31	11.80	99.33	371.21	-370.12	547.82	532.63	36.06	
3300.00	3295.68	3224.20	3164.40	7.57	12.27	99.83	387.31	-385.91	572.28	556.54	36.35	
3400.00	3395.37	3321.12	3258.65	7.80	12.74	100.44	403.43	-401.71	596.64	580.38	36.70	
3500.00	3495.17	3418.16	3353.02	7.98	13.22	100.87	419.56	-417.52	620.70	603.98	37.11	

Weatherford International, Ltd.

Anticollision Report

Company:	BERRY PETROLEUM COMPANY	Date:	6/25/2007	Time:	12:54:01	Page:	2
Field:	GARFIELD COUNTY (NAD 83)	Co-ordinate(NE) Reference:	Well: BERRY 11-5D, True North				
Reference Site:	BERRY 11-15D PAD	Vertical (TVD) Reference:	SITE 8179.0				
Reference Well:	BERRY 11-5D						
Reference Wellpath:	1	Db: Sybase					

Site: BERRY 11-15D PAD
Well: BERRY 11-16D
Wellpath: 1 V0 Plan: Plan #1 V1

Inter-Site Error: 0.00 ft

Reference		Offset		Semi-Major Axis			Offset Location		Ctr-Ctr	Edge	Separation	Warning
MD	TVD	MD	TVD	Ref	Offset	TFO-HS	North	East	Distance	Distance	Factor	
ft	ft	ft	ft	ft	ft	deg	ft	ft	ft	ft		
3600.00	3595.07	3515.30	3447.49	8.15	13.70	101.12	435.72	-433.35	644.45	627.27	37.51	
3700.00	3695.04	3612.50	3542.02	8.33	14.17	101.22	451.88	-449.20	667.87	650.24	37.88	
3800.00	3795.03	3709.74	3636.59	8.50	14.65	101.18	468.05	-465.05	690.98	672.90	38.24	
3900.00	3895.03	3806.99	3731.17	8.69	15.13	325.53	484.22	-480.90	713.92	695.59	38.95	
4000.00	3995.03	3904.25	3825.75	8.91	15.61	325.22	500.39	-496.75	736.88	718.06	39.16	
4100.00	4095.03	4001.50	3920.33	9.12	16.08	324.93	516.56	-512.60	759.86	740.56	39.36	
4200.00	4195.03	4098.75	4014.91	9.34	16.56	324.65	532.74	-528.45	782.86	763.07	39.56	
4300.00	4295.03	4196.00	4109.49	9.56	17.04	324.39	548.91	-544.30	805.88	785.60	39.74	
4400.00	4395.03	4293.25	4204.06	9.78	17.52	324.14	565.08	-560.15	828.91	808.14	39.91	
4500.00	4495.03	4390.50	4298.64	10.00	18.00	323.91	581.25	-576.00	851.95	830.70	40.08	
4600.00	4595.03	4487.75	4393.22	10.21	18.48	323.69	597.42	-591.85	875.01	853.27	40.24	
4700.00	4695.03	4585.01	4487.80	10.43	18.96	323.48	613.59	-607.70	898.08	875.85	40.39	
4800.00	4795.03	4682.26	4582.38	10.65	19.44	323.28	629.76	-623.55	921.16	898.44	40.54	
4900.00	4895.03	4779.51	4676.96	10.87	19.91	323.09	645.94	-639.41	944.25	921.04	40.68	
5000.00	4995.03	4876.76	4771.54	11.09	20.39	322.91	662.11	-655.26	967.35	943.65	40.81	
5100.00	5095.03	4974.01	4866.11	11.31	20.87	322.74	678.28	-671.11	990.46	966.27	40.94	
5200.00	5195.03	5071.26	4960.69	11.53	21.35	322.57	694.45	-686.96	1013.57	988.89	41.06	
5300.00	5295.03	5168.51	5055.27	11.75	21.83	322.42	710.62	-702.81	1036.70	1011.53	41.18	
5400.00	5395.03	5265.77	5149.85	11.97	22.31	322.27	726.79	-718.66	1059.83	1034.17	41.30	
5500.00	5495.03	5369.56	5250.82	12.19	22.80	322.12	743.98	-735.50	1082.88	1056.72	41.39	
5600.00	5595.03	5490.05	5368.44	12.41	23.26	321.96	762.62	-753.78	1104.42	1077.75	41.42	
5700.00	5695.03	5611.61	5487.64	12.63	23.68	321.82	779.64	-770.46	1123.91	1096.76	41.40	
5800.00	5795.03	5734.15	5608.29	12.85	24.07	321.70	794.96	-785.47	1141.31	1113.70	41.33	
5900.00	5895.03	5857.58	5730.24	13.08	24.43	321.60	808.53	-798.77	1156.62	1128.55	41.20	
6000.00	5995.03	5981.78	5853.34	13.30	24.76	321.51	820.28	-810.29	1169.80	1141.28	41.02	
6100.00	6095.03	6106.64	5977.44	13.52	25.06	321.45	830.17	-819.99	1180.84	1151.89	40.78	
6200.00	6195.03	6232.06	6102.35	13.74	25.32	321.39	838.16	-827.82	1189.71	1160.34	40.50	
6300.00	6295.03	6357.90	6227.91	13.96	25.55	321.35	844.22	-833.75	1196.42	1166.64	40.18	
6400.00	6395.03	6484.06	6353.93	14.18	25.75	321.32	848.30	-837.76	1200.93	1170.76	39.81	
6500.00	6495.03	6610.42	6480.25	14.40	25.91	321.31	850.41	-839.83	1203.26	1172.71	39.39	
6600.00	6595.03	6725.20	6595.03	14.63	26.04	321.30	850.73	-840.13	1203.60	1168.59	34.38	
6700.00	6695.03	6825.20	6695.03	14.85	26.16	321.30	850.73	-840.13	1203.60	1168.22	34.02	
6800.00	6795.03	6925.20	6795.03	15.07	26.28	321.30	850.73	-840.13	1203.60	1167.85	33.66	
6900.00	6895.03	7025.20	6895.03	15.29	26.40	321.30	850.73	-840.13	1203.60	1167.47	33.32	
7000.00	6995.03	7125.20	6995.03	15.51	26.52	321.30	850.73	-840.13	1203.60	1167.10	32.97	
7100.00	7095.03	7225.20	7095.03	15.74	26.64	321.30	850.73	-840.13	1203.60	1166.72	32.64	
7200.00	7195.03	7325.20	7195.03	15.96	26.77	321.30	850.73	-840.13	1203.60	1166.35	32.31	
7300.00	7295.03	7425.20	7295.03	16.18	26.90	321.30	850.73	-840.13	1203.60	1165.97	31.98	
7400.00	7395.03	7525.20	7395.03	16.40	27.02	321.30	850.73	-840.13	1203.60	1165.59	31.66	
7500.00	7495.03	7625.20	7495.03	16.63	27.15	321.30	850.73	-840.13	1203.60	1165.21	31.35	
7600.00	7595.03	7725.20	7595.03	16.85	27.28	321.30	850.73	-840.13	1203.60	1164.83	31.04	
7700.00	7695.03	7825.20	7695.03	17.07	27.41	321.30	850.73	-840.13	1203.60	1164.44	30.74	
7800.00	7795.03	7925.20	7795.03	17.29	27.54	321.30	850.73	-840.13	1203.60	1164.06	30.44	
7900.00	7895.03	8025.20	7895.03	17.52	27.68	321.30	850.73	-840.13	1203.60	1163.67	30.14	
8000.00	7995.03	8125.20	7995.03	17.74	27.81	321.30	850.73	-840.13	1203.60	1163.29	29.85	
8100.00	8095.03	8225.20	8095.03	17.96	27.95	321.30	850.73	-840.13	1203.60	1162.90	29.57	
8200.00	8195.03	8325.20	8195.03	18.18	28.08	321.30	850.73	-840.13	1203.60	1162.51	29.29	
8300.00	8295.03	8425.20	8295.03	18.41	28.22	321.30	850.73	-840.13	1203.60	1162.12	29.01	
8400.00	8395.03	8525.20	8395.03	18.63	28.36	321.30	850.73	-840.13	1203.60	1161.73	28.74	
8500.00	8495.03	8625.20	8495.03	18.85	28.50	321.30	850.73	-840.13	1203.60	1161.34	28.48	
8600.00	8595.03	8725.20	8595.03	19.08	28.64	321.30	850.73	-840.13	1203.60	1160.94	28.21	

Weatherford International, Ltd.

Anticollision Report

Company:	BERRY PETROLEUM COMPANY	Date: 6/25/2007	Time: 12:54:01	Page: 3
Field:	GARFIELD COUNTY (NAD 83)			
Reference Site:	BERRY 11-15D PAD	Co-ordinate(NE) Reference:	Well: BERRY 11-5D, True North	
Reference Well:	BERRY 11-5D	Vertical (TVD) Reference:	SITE 8179.0	
Reference Wellpath:	1	Db: Sybase		

Site: BERRY 11-15D PAD
Well: BERRY 11-16D
Wellpath: 1 V0 Plan: Plan #1 V1

Inter-Site Error: 0.00 ft

Reference		Offset		Semi-Major Axis			Offset Location		Ctr-Ctr Distance	Edge Distance	Separation Factor	Warning
MD	TVD	MD	TVD	Ref	Offset	TFO-HS	North	East				
ft	ft	ft	ft	ft	ft	deg	ft	ft	ft	ft		
8700.00	8695.03	8825.20	8695.03	19.30	28.79	321.30	850.73	-840.13	1203.60	1160.55	27.96	
8800.00	8795.03	8925.20	8795.03	19.52	28.93	321.30	850.73	-840.13	1203.60	1160.16	27.70	
8900.00	8895.03	9025.20	8895.03	19.75	29.07	321.30	850.73	-840.13	1203.60	1159.76	27.45	
9000.00	8995.03	9125.20	8995.03	19.97	29.22	321.30	850.73	-840.13	1203.60	1159.36	27.21	
9100.00	9095.03	9225.20	9095.03	20.19	29.37	321.30	850.73	-840.13	1203.60	1158.97	26.96	

Site: BERRY 11-15D PAD
Well: BERRY 11-6D
Wellpath: 1 V0 Plan: Plan #1 V1

Inter-Site Error: 0.00 ft

Reference		Offset		Semi-Major Axis			Offset Location		Ctr-Ctr Distance	Edge Distance	Separation Factor	Warning
MD	TVD	MD	TVD	Ref	Offset	TFO-HS	North	East				
ft	ft	ft	ft	ft	ft	deg	ft	ft	ft	ft		
0.00	0.00	0.00	0.00	0.00	0.00	115.92	-6.71	13.81	15.35			No Data
100.00	100.00	100.00	100.00	0.08	0.08	115.92	-6.71	13.81	15.35	15.19	94.86	
200.00	200.00	200.00	200.00	0.31	0.31	115.92	-6.71	13.81	15.35	14.74	25.11	
300.00	300.00	300.00	300.00	0.53	0.53	115.92	-6.71	13.81	15.35	14.29	14.47	
400.00	400.00	400.00	400.00	0.76	0.76	115.92	-6.71	13.81	15.35	13.84	10.16	
500.00	500.00	500.00	500.00	0.98	0.98	115.92	-6.71	13.81	15.35	13.39	7.83	
600.00	600.00	600.00	600.00	1.20	1.20	115.92	-6.71	13.81	15.35	12.94	6.37	
700.00	700.00	700.00	700.00	1.43	1.43	115.92	-6.71	13.81	15.35	12.49	5.37	
800.00	800.00	800.00	800.00	1.65	1.65	115.92	-6.71	13.81	15.35	12.04	4.64	
900.00	900.00	900.00	900.00	1.88	1.88	115.92	-6.71	13.81	15.35	11.59	4.08	
1000.00	1000.00	1000.00	1000.00	2.10	2.10	115.92	-6.71	13.81	15.35	11.14	3.65	
1100.00	1100.00	1100.00	1100.00	2.33	2.33	115.92	-6.71	13.81	15.35	10.69	3.30	
1200.00	1200.00	1200.00	1200.00	2.55	2.55	115.92	-6.71	13.81	15.35	10.24	3.01	
1300.00	1300.00	1300.00	1300.00	2.78	2.78	115.92	-6.71	13.81	15.35	9.79	2.76	
1400.00	1400.00	1400.00	1400.00	3.00	3.00	115.92	-6.71	13.81	15.35	9.35	2.56	
1500.00	1500.00	1500.00	1500.00	3.23	3.23	115.92	-6.71	13.81	15.35	8.90	2.38	
1600.00	1600.00	1600.06	1600.04	3.45	3.45	109.40	-5.02	14.27	15.12	8.22	2.19	
1700.00	1700.00	1699.87	1699.71	3.68	3.67	89.94	0.02	15.64	15.64	8.29	2.13	
1800.00	1800.00	1799.42	1798.92	3.90	3.90	65.90	7.96	17.80	19.53	11.73	2.50	
1900.00	1900.00	1899.04	1898.16	4.13	4.13	50.87	16.34	20.08	25.95	17.71	3.15	
2000.00	2000.00	1998.66	1997.40	4.35	4.37	42.14	24.71	22.36	33.43	24.73	3.84	
2100.00	2099.98	2098.13	2096.49	4.58	4.61	172.30	33.07	24.64	43.11	33.97	4.71	
2200.00	2199.84	2197.21	2195.19	4.81	4.85	169.69	41.40	26.90	56.42	46.83	5.88	
2300.00	2299.49	2295.86	2293.47	5.04	5.09	168.58	49.70	29.16	72.76	62.72	7.25	
2400.00	2399.11	2394.44	2391.67	5.28	5.34	167.95	57.98	31.42	89.54	79.05	8.54	
2500.00	2498.73	2493.02	2489.87	5.53	5.58	167.52	66.27	33.67	106.32	95.38	9.72	
2600.00	2598.35	2591.60	2588.08	5.77	5.83	167.21	74.56	35.93	123.11	111.71	10.80	
2700.00	2697.97	2690.17	2686.28	6.02	6.09	166.97	82.84	38.19	139.90	128.04	11.80	
2800.00	2797.59	2788.75	2784.49	6.28	6.34	166.78	91.13	40.44	156.69	144.38	12.73	
2900.00	2897.21	2887.33	2882.69	6.53	6.59	166.63	99.42	42.70	173.48	160.72	13.59	
3000.00	2996.83	2985.91	2980.89	6.79	6.85	166.51	107.71	44.95	190.28	177.05	14.39	
3100.00	3096.45	3084.49	3079.10	7.05	7.10	166.40	115.99	47.21	207.07	193.39	15.13	
3200.00	3196.06	3183.07	3177.30	7.31	7.36	166.32	124.28	49.46	223.87	209.73	15.83	
3300.00	3295.68	3281.65	3275.51	7.57	7.62	166.24	132.57	51.72	240.67	226.06	16.48	
3400.00	3395.37	3380.35	3373.83	7.80	7.88	166.17	140.86	53.98	256.71	241.66	17.06	
3500.00	3495.17	3479.31	3472.42	7.98	8.14	166.02	149.18	56.24	271.07	255.62	17.54	
3600.00	3595.07	3578.49	3571.22	8.15	8.40	165.79	157.52	58.51	283.77	267.91	17.89	
3700.00	3695.04	3677.87	3670.22	8.33	8.66	165.50	165.88	60.79	294.79	278.52	18.12	
3800.00	3795.03	3777.41	3769.38	8.50	8.92	165.15	174.24	63.07	304.14	287.47	18.24	
3900.00	3895.03	3877.03	3868.62	8.69	9.19	29.42	182.62	65.35	312.58	295.41	18.21	

Weatherford International, Ltd.

Anticollision Report

Company: BERRY PETROLEUM COMPANY	Date: 6/25/2007	Time: 12:54:01	Page: 4
Field: GARFIELD COUNTY (NAD 83)			
Reference Site: BERRY 11-15D PAD	Co-ordinate(NE) Reference: Well: BERRY 11-5D, True North		
Reference Well: BERRY 11-5D	Vertical (TVD) Reference: SITE 8179.0		
Reference Wellpath: 1	Db: Sybase		

Site: BERRY 11-15D PAD
Well: BERRY 11-6D
Wellpath: 1 V0 Plan: Plan #1 V1

Inter-Site Error: 0.00 ft

Reference		Offset		Semi-Major Axis			Offset Location		Ctr-Ctr Distance ft	Edge Distance ft	Separation Factor	Warning
MD ft	TVD ft	MD ft	TVD ft	Ref ft	Offset ft	TFO-HS deg	North ft	East ft				
4000.00	3995.03	3982.36	3973.63	8.91	9.41	29.06	190.54	67.50	320.15	302.57	18.21	
4100.00	4095.03	4087.97	4079.05	9.12	9.62	28.80	196.62	69.16	325.94	307.95	18.12	
4200.00	4195.03	4193.77	4184.77	9.34	9.82	28.62	200.83	70.30	329.95	311.56	17.94	
4300.00	4295.03	4299.70	4290.67	9.56	10.01	28.52	203.15	70.94	332.16	313.37	17.67	
4400.00	4395.03	4404.07	4395.03	9.78	10.19	28.50	203.66	71.07	332.64	313.34	17.23	
4500.00	4495.03	4504.07	4495.03	10.00	10.39	28.50	203.66	71.07	332.64	312.90	16.85	
4600.00	4595.03	4604.07	4595.03	10.21	10.60	28.50	203.66	71.07	332.64	312.46	16.48	
4700.00	4695.03	4704.07	4695.03	10.43	10.81	28.50	203.66	71.07	332.64	312.02	16.13	
4800.00	4795.03	4804.07	4795.03	10.65	11.02	28.50	203.66	71.07	332.64	311.58	15.79	
4900.00	4895.03	4904.07	4895.03	10.87	11.23	28.50	203.66	71.07	332.64	311.14	15.47	
5000.00	4995.03	5004.07	4995.03	11.09	11.44	28.50	203.66	71.07	332.64	310.70	15.16	
5100.00	5095.03	5104.07	5095.03	11.31	11.65	28.50	203.66	71.07	332.64	310.25	14.86	
5200.00	5195.03	5204.07	5195.03	11.53	11.86	28.50	203.66	71.07	332.64	309.81	14.57	
5300.00	5295.03	5304.07	5295.03	11.75	12.07	28.50	203.66	71.07	332.64	309.37	14.29	
5400.00	5395.03	5404.07	5395.03	11.97	12.28	28.50	203.66	71.07	332.64	308.93	14.03	
5500.00	5495.03	5504.07	5495.03	12.19	12.49	28.50	203.66	71.07	332.64	308.48	13.77	
5600.00	5595.03	5604.07	5595.03	12.41	12.70	28.50	203.66	71.07	332.64	308.04	13.52	
5700.00	5695.03	5704.07	5695.03	12.63	12.92	28.50	203.66	71.07	332.64	307.60	13.28	
5800.00	5795.03	5804.07	5795.03	12.85	13.13	28.50	203.66	71.07	332.64	307.16	13.05	
5900.00	5895.03	5904.07	5895.03	13.08	13.34	28.50	203.66	71.07	332.64	306.71	12.83	
6000.00	5995.03	6004.07	5995.03	13.30	13.56	28.50	203.66	71.07	332.64	306.27	12.61	
6100.00	6095.03	6104.07	6095.03	13.52	13.77	28.50	203.66	71.07	332.64	305.82	12.40	
6200.00	6195.03	6204.07	6195.03	13.74	13.99	28.50	203.66	71.07	332.64	305.38	12.20	
6300.00	6295.03	6304.07	6295.03	13.96	14.20	28.50	203.66	71.07	332.64	304.94	12.01	
6400.00	6395.03	6404.07	6395.03	14.18	14.42	28.50	203.66	71.07	332.64	304.49	11.82	
6500.00	6495.03	6504.07	6495.03	14.40	14.63	28.50	203.66	71.07	332.64	304.05	11.63	
6600.00	6595.03	6604.07	6595.03	14.63	14.85	28.50	203.66	71.07	332.64	303.60	11.45	
6700.00	6695.03	6704.07	6695.03	14.85	15.06	28.50	203.66	71.07	332.64	303.16	11.28	
6800.00	6795.03	6804.07	6795.03	15.07	15.28	28.50	203.66	71.07	332.64	302.71	11.11	
6900.00	6895.03	6904.07	6895.03	15.29	15.50	28.50	203.66	71.07	332.64	302.27	10.95	
7000.00	6995.03	7004.07	6995.03	15.51	15.71	28.50	203.66	71.07	332.64	301.82	10.79	
7100.00	7095.03	7104.07	7095.03	15.74	15.93	28.50	203.66	71.07	332.64	301.38	10.64	
7200.00	7195.03	7204.07	7195.03	15.96	16.15	28.50	203.66	71.07	332.64	300.93	10.49	
7300.00	7295.03	7304.07	7295.03	16.18	16.37	28.50	203.66	71.07	332.64	300.48	10.34	
7400.00	7395.03	7404.07	7395.03	16.40	16.58	28.50	203.66	71.07	332.64	300.04	10.20	
7500.00	7495.03	7504.07	7495.03	16.63	16.80	28.50	203.66	71.07	332.64	299.59	10.06	
7600.00	7595.03	7604.07	7595.03	16.85	17.02	28.50	203.66	71.07	332.64	299.15	9.93	
7700.00	7695.03	7704.07	7695.03	17.07	17.24	28.50	203.66	71.07	332.64	298.70	9.80	
7800.00	7795.03	7804.07	7795.03	17.29	17.46	28.50	203.66	71.07	332.64	298.25	9.67	
7900.00	7895.03	7904.07	7895.03	17.52	17.67	28.50	203.66	71.07	332.64	297.81	9.55	
8000.00	7995.03	8004.07	7995.03	17.74	17.89	28.50	203.66	71.07	332.64	297.36	9.43	
8100.00	8095.03	8104.07	8095.03	17.96	18.11	28.50	203.66	71.07	332.64	296.92	9.31	
8200.00	8195.03	8204.07	8195.03	18.18	18.33	28.50	203.66	71.07	332.64	296.47	9.20	
8300.00	8295.03	8304.07	8295.03	18.41	18.55	28.50	203.66	71.07	332.64	296.02	9.08	
8400.00	8395.03	8404.07	8395.03	18.63	18.77	28.50	203.66	71.07	332.64	295.58	8.97	
8500.00	8495.03	8504.07	8495.03	18.85	18.99	28.50	203.66	71.07	332.64	295.13	8.87	
8600.00	8595.03	8604.07	8595.03	19.08	19.21	28.50	203.66	71.07	332.64	294.68	8.76	
8700.00	8695.03	8704.07	8695.03	19.30	19.43	28.50	203.66	71.07	332.64	294.24	8.66	
8800.00	8795.03	8804.07	8795.03	19.52	19.65	28.50	203.66	71.07	332.64	293.79	8.56	
8900.00	8895.03	8904.07	8895.03	19.75	19.87	28.50	203.66	71.07	332.64	293.34	8.46	

Weatherford International, Ltd.

Anticollision Report

Company:	BERRY PETROLEUM COMPANY	Date:	6/25/2007	Time:	12:54:01	Page:	5
Field:	GARFIELD COUNTY (NAD 83)	Co-ordinate(NE) Reference:	Well: BERRY 11-5D, True North				
Reference Site:	BERRY 11-15D PAD	Vertical (TVD) Reference:	SITE 8179.0				
Reference Well:	BERRY 11-5D						
Reference Wellpath:	1	Db: Sybase					

Site: BERRY 11-15D PAD
Well: BERRY 11-6D
Wellpath: 1 V0 Plan: Plan #1 V1

Inter-Site Error: 0.00 ft

Reference		Offset		Semi-Major Axis			Offset Location		Ctr-Ctr	Edge	Separation	Warning
MD	TVD	MD	TVD	Ref	Offset	TFO-HS	North	East	Distance	Distance	Factor	
ft	ft	ft	ft	ft	ft	deg	ft	ft	ft	ft		
9000.00	8995.03	9004.07	8995.03	19.97	20.09	28.50	203.66	71.07	332.64	292.89	8.37	
9100.00	9095.03	9104.07	9095.03	20.19	20.31	28.50	203.66	71.07	332.64	292.45	8.28	