



Drilling Services

Proposal

BERRY PETROLEUM COMPANY

BERRY 11-3D

GARFIELD COUNTY, CO

WELL FILE:PLAN 1

JUNE 25, 2007

Weatherford International Ltd.

2690 Oil Drive
Casper, Wyoming 82604
+1.307.265.1413 Main
+1.307.235.3958 Fax
www.weatherford.com



Berry Petroleum Company

BERRY 11-3D
1573' FSL, 657' FEL
SECTION 11-T6S-R97W
GARFIELD COUNTY, CO.

SITE DETAILS

BERRY 11-15D PAD
 SECTION 11-T6S-R97W
 1615' FSL, 753' FEL

Site Centre Latitude: 39°32'04.776N
 Longitude: 108°10'50.664W

Ground Level: 8151.00
 Positional Uncertainty: 0.00
 Convergence: -1.69

SECTION DETAILS

Sec	MD	Inc	Azi	TVD	+N/-S	+E/-W	DLeg	TFace	VSec	Target
1	0.00	0.00	173.40	0.00	0.00	0.00	0.00	0.00	0.00	
2	1000.00	0.00	173.40	1000.00	0.00	0.00	0.00	0.00	0.00	
3	1403.15	8.06	173.40	1401.82	-28.13	3.25	2.00	173.40	28.32	
4	5590.07	8.06	173.40	5547.35	-611.51	70.72	0.00	0.00	615.59	
5	6396.38	0.00	173.40	6351.00	-667.78	77.23	1.00	180.00	672.23	
6	9121.38	0.00	173.40	9076.00	-667.78	77.23	0.00	173.40	672.23	11-3D PBHL

WELL DETAILS

Name	+N/-S	+E/-W	Northing	Easting	Latitude	Longitude	Slot
BERRY 11-3D	-46.86	94.65	1630736.80	2244116.88	39°32'04.313N	108°10'49.456W	N/A

TARGET DETAILS

Name	TVD	+N/-S	+E/-W	Northing	Easting	Shape
11-3D PBHL	9076.00	-667.78	77.23	1630067.04	2244174.37	Rectangle (100x200)

FIELD DETAILS

GARFIELD COUNTY (NAD 83)
 COLORADO

Geodetic System: US State Plane Coordinate System 1983
 Ellipsoid: GRS 1980
 Zone: colorado, central zone
 Magnetic Model: bggm2006

System Datum: Mean Sea Level
 Local North: True North

FORMATION TOP DETAILS

No.	TVDPath	MDPath	Formation
1	2301.00	2311.31	WASATCH
2	5976.00	6021.11	OHIO CREEK
3	6276.00	6321.38	MESAVERDE
4	6351.00	6396.38	APPROX TOP GAS
5	8526.00	8571.38	CAMEO
6	8976.00	9021.38	ROLLINS SS

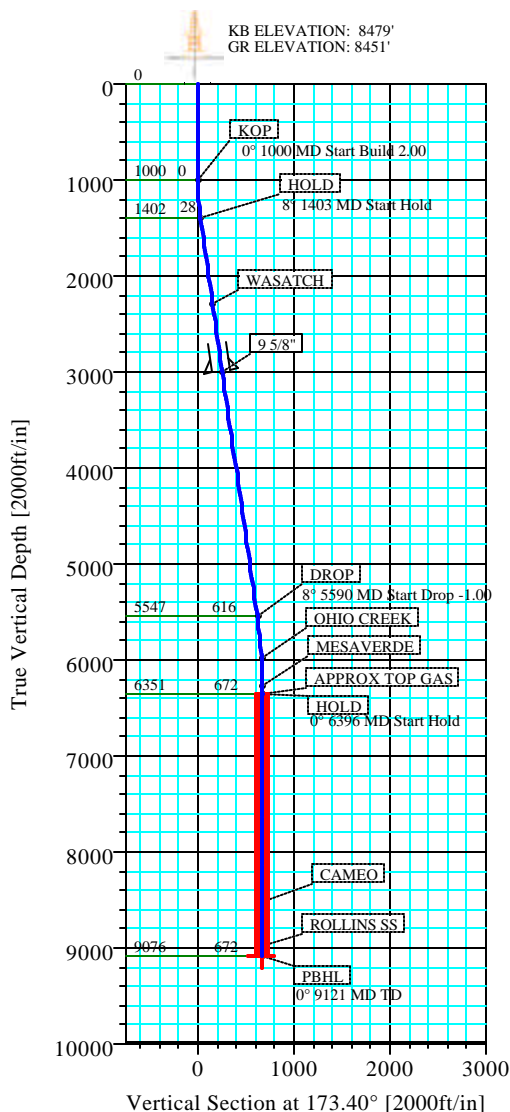


Azimuths to True North
 Magnetic North: 10.98°

Magnetic Field
 Strength: 52702nT
 Dip Angle: 65.88°
 Date: 6/25/2007
 Model: bggm2006

TOTAL CORRECTION TO TRUE NORTH 10.98°

-DRILLING NOTE-
TO ACCOUNT FOR THE 240° DRIFT IN AZIMUTH, AIM
FOR THE NE SIDE OF PBHL, AND
BE IN THE TARGET WINDOW BY THE TOP GAS AND STAY
WITHIN THE WINDOW TO TD. DO NOT GO OUTSIDE THE
WINDOW.

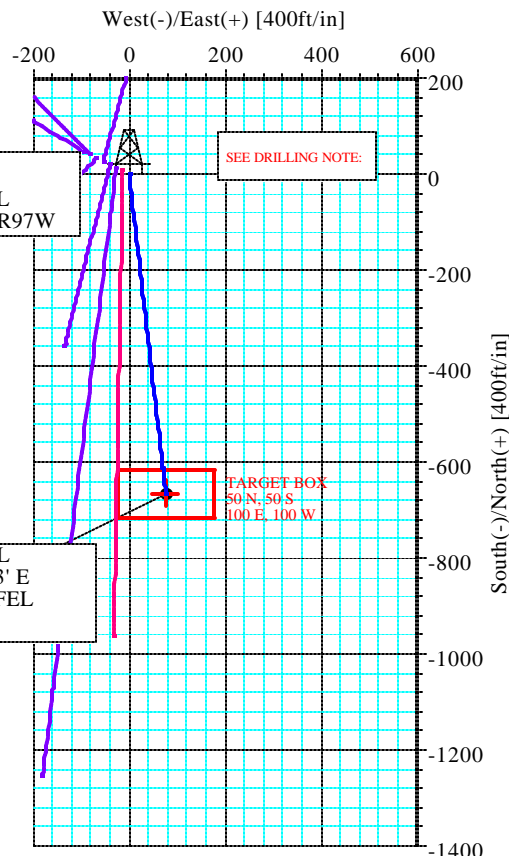


SHL
 1573' FSL, 657' FEL
 SECTION 11-T6S-R97W

SEE DRILLING NOTE:

TOP GAS/PBHL
 667.78' S, 77.23' E
 910' FSL, 560' FEL

TARGET BOX
 80' N, 50' S
 100' E, 100' W



Weatherford

Plan: Plan #1 (BERRY 11-3D/1)

Created By: ROBERT SCOTT

Date: 6/25/2007

Weatherford International, Ltd.

PLAN REPORT

Company: BERRY PETROLEUM COMPANY		Date: 6/25/2007	Time: 13:58:46	Page: 1
Field: GARFIELD COUNTY (NAD 83)		Co-ordinate(NE) Reference: Well: BERRY 11-3D, True North		
Site: BERRY 11-15D PAD		Vertical (TVD) Reference: SITE 8179.0		
Well: BERRY 11-3D		Section (VS) Reference: Well (0.00N,0.00E,173.40Azi)		
Wellpath: 1		Survey Calculation Method: Minimum Curvature	Db: Sybase	

Field: GARFIELD COUNTY (NAD 83) COLORADO	
Map System: US State Plane Coordinate System 1983	Map Zone: colorado, central zone
Geo Datum: GRS 1980	Coordinate System: Well Centre
Sys Datum: Mean Sea Level	Geomagnetic Model: bggm2006

Site: BERRY 11-15D PAD SECTION 11-T6S-R97W 1615' FSL, 753' FEL	
Site Position:	Northing: 1630786.44 ft
From: Geographic	Easting: 2244023.65 ft
Position Uncertainty: 0.00 ft	Latitude: 39 32 4.776 N
Ground Level: 8151.00 ft	Longitude: 108 10 50.664 W
	North Reference: True
	Grid Convergence: -1.69 deg

Well: BERRY 11-3D 1573' FSL, 657' FEL		Slot Name:	
Well Position: +N/-S -46.86 ft	Northing: 1630736.80 ft	Latitude: 39 32 4.313 N	
+E/-W 94.65 ft	Easting : 2244116.88 ft	Longitude: 108 10 49.456 W	
Position Uncertainty: 0.00 ft			

Wellpath: 1		Drilled From: Surface	
Current Datum: SITE	Height 8179.00 ft	Tie-on Depth: 0.00 ft	
Magnetic Data: 6/25/2007		Above System Datum: Mean Sea Level	
Field Strength: 52702 nT		Declination: 10.98 deg	
Vertical Section: Depth From (TVD)	+N/-S	Mag Dip Angle: 65.88 deg	
ft	ft	+E/-W	Direction
		ft	deg
0.00	0.00	0.00	173.40

Plan: Plan #1	Date Composed: 6/25/2007
Principal: Yes	Version: 1
	Tied-to: From Surface

Plan Section Information										
MD ft	Incl deg	Azim deg	TVD ft	+N/-S ft	+E/-W ft	DLS deg/100ft	Build deg/100ft	Turn deg/100ft	TFO deg	Target
0.00	0.00	173.40	0.00	0.00	0.00	0.00	0.00	0.00	0.00	
1000.00	0.00	173.40	1000.00	0.00	0.00	0.00	0.00	0.00	0.00	
1403.15	8.06	173.40	1401.82	-28.13	3.25	2.00	2.00	0.00	173.40	
5590.07	8.06	173.40	5547.35	-611.51	70.72	0.00	0.00	0.00	0.00	
6396.38	0.00	173.40	6351.00	-667.78	77.23	1.00	-1.00	0.00	180.00	
9121.38	0.00	173.40	9076.00	-667.78	77.23	0.00	0.00	0.00	173.40	11-3D PBHL

Survey										
MD ft	Incl deg	Azim deg	TVD ft	N/S ft	E/W ft	VS ft	DLS deg/100ft	Build deg/100ft	Turn deg/100ft	Comment
1000.00	0.00	173.40	1000.00	0.00	0.00	0.00	0.00	0.00	0.00	KOP
1100.00	2.00	173.40	1099.98	-1.73	0.20	1.75	2.00	2.00	0.00	
1200.00	4.00	173.40	1199.84	-6.93	0.80	6.98	2.00	2.00	0.00	
1300.00	6.00	173.40	1299.45	-15.59	1.80	15.69	2.00	2.00	0.00	
1400.00	8.00	173.40	1398.70	-27.70	3.20	27.88	2.00	2.00	0.00	
1403.15	8.06	173.40	1401.82	-28.13	3.25	28.32	2.00	2.00	0.00	HOLD
1500.00	8.06	173.40	1497.71	-41.63	4.81	41.90	0.00	0.00	0.00	
1600.00	8.06	173.40	1596.72	-55.56	6.43	55.93	0.00	0.00	0.00	
1700.00	8.06	173.40	1695.74	-69.49	8.04	69.96	0.00	0.00	0.00	
1800.00	8.06	173.40	1794.75	-83.43	9.65	83.98	0.00	0.00	0.00	
1900.00	8.06	173.40	1893.76	-97.36	11.26	98.01	0.00	0.00	0.00	
2000.00	8.06	173.40	1992.77	-111.29	12.87	112.04	0.00	0.00	0.00	
2100.00	8.06	173.40	2091.78	-125.23	14.48	126.06	0.00	0.00	0.00	
2200.00	8.06	173.40	2190.79	-139.16	16.09	140.09	0.00	0.00	0.00	
2300.00	8.06	173.40	2289.80	-153.09	17.70	154.11	0.00	0.00	0.00	

Weatherford International, Ltd.

PLAN REPORT

Company: BERRY PETROLEUM COMPANY Field: GARFIELD COUNTY (NAD 83) Site: BERRY 11-15D PAD Well: BERRY 11-3D Wellpath: 1	Date: 6/25/2007 Co-ordinate(NE) Reference: Well: BERRY 11-3D, True North Vertical (TVD) Reference: SITE 8179.0 Section (VS) Reference: Well (0.00N,0.00E,173.40Azi) Survey Calculation Method: Minimum Curvature Db: Sybase
--	---

Survey

MD ft	Incl deg	Azim deg	TVD ft	N/S ft	E/W ft	VS ft	DLS deg/100ft	Build deg/100ft	Turn deg/100ft	Comment
2311.31	8.06	173.40	2301.00	-154.67	17.89	155.70	0.00	0.00	0.00	WASATCH
2400.00	8.06	173.40	2388.82	-167.03	19.32	168.14	0.00	0.00	0.00	
2500.00	8.06	173.40	2487.83	-180.96	20.93	182.17	0.00	0.00	0.00	
2600.00	8.06	173.40	2586.84	-194.89	22.54	196.19	0.00	0.00	0.00	
2700.00	8.06	173.40	2685.85	-208.83	24.15	210.22	0.00	0.00	0.00	
2800.00	8.06	173.40	2784.86	-222.76	25.76	224.25	0.00	0.00	0.00	9 5/8"
2900.00	8.06	173.40	2883.87	-236.69	27.37	238.27	0.00	0.00	0.00	
3000.00	8.06	173.40	2982.88	-250.63	28.98	252.30	0.00	0.00	0.00	
3017.29	8.06	173.40	3000.00	-253.04	29.26	254.72	0.00	0.00	0.00	
3100.00	8.06	173.40	3081.90	-264.56	30.60	266.32	0.00	0.00	0.00	
3200.00	8.06	173.40	3180.91	-278.49	32.21	280.35	0.00	0.00	0.00	
3300.00	8.06	173.40	3279.92	-292.43	33.82	294.38	0.00	0.00	0.00	
3400.00	8.06	173.40	3378.93	-306.36	35.43	308.40	0.00	0.00	0.00	
3500.00	8.06	173.40	3477.94	-320.29	37.04	322.43	0.00	0.00	0.00	
3600.00	8.06	173.40	3576.95	-334.23	38.65	336.46	0.00	0.00	0.00	
3700.00	8.06	173.40	3675.96	-348.16	40.26	350.48	0.00	0.00	0.00	
3800.00	8.06	173.40	3774.98	-362.10	41.87	364.51	0.00	0.00	0.00	
3900.00	8.06	173.40	3873.99	-376.03	43.49	378.53	0.00	0.00	0.00	
4000.00	8.06	173.40	3973.00	-389.96	45.10	392.56	0.00	0.00	0.00	
4100.00	8.06	173.40	4072.01	-403.90	46.71	406.59	0.00	0.00	0.00	
4200.00	8.06	173.40	4171.02	-417.83	48.32	420.61	0.00	0.00	0.00	
4300.00	8.06	173.40	4270.03	-431.76	49.93	434.64	0.00	0.00	0.00	
4400.00	8.06	173.40	4369.04	-445.70	51.54	448.67	0.00	0.00	0.00	
4500.00	8.06	173.40	4468.06	-459.63	53.15	462.69	0.00	0.00	0.00	
4600.00	8.06	173.40	4567.07	-473.56	54.77	476.72	0.00	0.00	0.00	
4700.00	8.06	173.40	4666.08	-487.50	56.38	490.74	0.00	0.00	0.00	
4800.00	8.06	173.40	4765.09	-501.43	57.99	504.77	0.00	0.00	0.00	
4900.00	8.06	173.40	4864.10	-515.36	59.60	518.80	0.00	0.00	0.00	
5000.00	8.06	173.40	4963.11	-529.30	61.21	532.82	0.00	0.00	0.00	
5100.00	8.06	173.40	5062.12	-543.23	62.82	546.85	0.00	0.00	0.00	
5200.00	8.06	173.40	5161.14	-557.16	64.43	560.88	0.00	0.00	0.00	
5300.00	8.06	173.40	5260.15	-571.10	66.04	574.90	0.00	0.00	0.00	
5400.00	8.06	173.40	5359.16	-585.03	67.66	588.93	0.00	0.00	0.00	
5500.00	8.06	173.40	5458.17	-598.96	69.27	602.95	0.00	0.00	0.00	
5590.07	8.06	173.40	5547.35	-611.51	70.72	615.59	0.00	0.00	0.00	
5600.00	7.96	173.40	5557.18	-612.89	70.88	616.97	1.00	-1.00	0.00	DROP
5700.00	6.96	173.40	5656.33	-625.79	72.37	629.96	1.00	-1.00	0.00	
5800.00	5.96	173.40	5755.70	-636.97	73.66	641.22	1.00	-1.00	0.00	
5900.00	4.96	173.40	5855.24	-646.43	74.76	650.74	1.00	-1.00	0.00	
6000.00	3.96	173.40	5954.94	-654.16	75.65	658.52	1.00	-1.00	0.00	
6021.11	3.75	173.40	5976.00	-655.58	75.81	659.94	1.00	-1.00	0.00	OHIO CREEK
6100.00	2.96	173.40	6054.75	-660.17	76.35	664.57	1.00	-1.00	0.00	
6200.00	1.96	173.40	6154.66	-664.44	76.84	668.86	1.00	-1.00	0.00	
6300.00	0.96	173.40	6254.63	-666.97	77.13	671.42	1.00	-1.00	0.00	
6321.38	0.75	173.40	6276.00	-667.29	77.17	671.74	1.00	-1.00	0.00	
6396.38	0.00	173.40	6351.00	-667.78	77.23	672.23	1.00	-1.00	0.00	APPROX TOP GAS
6400.00	0.00	173.40	6354.62	-667.78	77.23	672.23	0.00	0.00	0.00	
6500.00	0.00	173.40	6454.62	-667.78	77.23	672.23	0.00	0.00	0.00	
6600.00	0.00	173.40	6554.62	-667.78	77.23	672.23	0.00	0.00	0.00	
6700.00	0.00	173.40	6654.62	-667.78	77.23	672.23	0.00	0.00	0.00	
6800.00	0.00	173.40	6754.62	-667.78	77.23	672.23	0.00	0.00	0.00	
6900.00	0.00	173.40	6854.62	-667.78	77.23	672.23	0.00	0.00	0.00	
7000.00	0.00	173.40	6954.62	-667.78	77.23	672.23	0.00	0.00	0.00	

Weatherford International, Ltd.

PLAN REPORT

Company:	BERRY PETROLEUM COMPANY	Date:	6/25/2007	Time:	13:58:46	Page:	3
Field:	GARFIELD COUNTY (NAD 83)	Co-ordinate(NE) Reference:	Well: BERRY 11-3D, True North				
Site:	BERRY 11-15D PAD	Vertical (TVD) Reference:	SITE 8179.0				
Well:	BERRY 11-3D	Section (VS) Reference:	Well (0.00N,0.00E,173.40Azi)				
Wellpath:	1	Survey Calculation Method:	Minimum Curvature				Db: Sybase

Survey

MD ft	Incl deg	Azim deg	TVD ft	N/S ft	E/W ft	VS ft	DLS deg/100ft	Build deg/100ft	Turn deg/100ft	Comment
7100.00	0.00	173.40	7054.62	-667.78	77.23	672.23	0.00	0.00	0.00	
7200.00	0.00	173.40	7154.62	-667.78	77.23	672.23	0.00	0.00	0.00	
7300.00	0.00	173.40	7254.62	-667.78	77.23	672.23	0.00	0.00	0.00	
7400.00	0.00	173.40	7354.62	-667.78	77.23	672.23	0.00	0.00	0.00	
7500.00	0.00	173.40	7454.62	-667.78	77.23	672.23	0.00	0.00	0.00	
7600.00	0.00	173.40	7554.62	-667.78	77.23	672.23	0.00	0.00	0.00	
7700.00	0.00	173.40	7654.62	-667.78	77.23	672.23	0.00	0.00	0.00	
7800.00	0.00	173.40	7754.62	-667.78	77.23	672.23	0.00	0.00	0.00	
7900.00	0.00	173.40	7854.62	-667.78	77.23	672.23	0.00	0.00	0.00	
8000.00	0.00	173.40	7954.62	-667.78	77.23	672.23	0.00	0.00	0.00	
8100.00	0.00	173.40	8054.62	-667.78	77.23	672.23	0.00	0.00	0.00	
8200.00	0.00	173.40	8154.62	-667.78	77.23	672.23	0.00	0.00	0.00	
8300.00	0.00	173.40	8254.62	-667.78	77.23	672.23	0.00	0.00	0.00	
8400.00	0.00	173.40	8354.62	-667.78	77.23	672.23	0.00	0.00	0.00	
8500.00	0.00	173.40	8454.62	-667.78	77.23	672.23	0.00	0.00	0.00	
8571.38	0.00	173.40	8526.00	-667.78	77.23	672.23	0.00	0.00	0.00	CAMEO
8600.00	0.00	173.40	8554.62	-667.78	77.23	672.23	0.00	0.00	0.00	
8700.00	0.00	173.40	8654.62	-667.78	77.23	672.23	0.00	0.00	0.00	
8800.00	0.00	173.40	8754.62	-667.78	77.23	672.23	0.00	0.00	0.00	
8900.00	0.00	173.40	8854.62	-667.78	77.23	672.23	0.00	0.00	0.00	
9000.00	0.00	173.40	8954.62	-667.78	77.23	672.23	0.00	0.00	0.00	
9021.38	0.00	173.40	8976.00	-667.78	77.23	672.23	0.00	0.00	0.00	ROLLINS SS
9100.00	0.00	173.40	9054.62	-667.78	77.23	672.23	0.00	0.00	0.00	
9121.38	0.00	173.40	9076.00	-667.78	77.23	672.23	0.00	0.00	0.00	11-3D PBHL

Annotation

MD ft	TVD ft	
1000.00	1000.00	KOP
1403.15	1401.82	HOLD
5590.07	5547.35	DROP
6396.38	6351.00	HOLD
9121.38	9076.00	PBHL

Targets

Name	Description	Dir.	TVD ft	+N/-S ft	+E/-W ft	Map Northing ft	Map Easting ft	<---- Latitude ---->			<--- Longitude --->				
								Deg	Min	Sec	Deg	Min	Sec		
11-3D PBHL -Rectangle (100x200) -Plan hit target			9076.00	-667.78	77.23	1630067.04	2244174.37	39	31	57.713	N	108	10	48.470	W

Weatherford International, Ltd.

Anticollision Report

Company:	BERRY PETROLEUM COMPANY	Date:	6/25/2007	Time:	13:59:03	Page:	1
Field:	GARFIELD COUNTY (NAD 83)	Co-ordinate(NE) Reference:	Well: BERRY 11-3D, True North				
Reference Site:	BERRY 11-15D PAD	Vertical (TVD) Reference:	SITE 8179.0				
Reference Well:	BERRY 11-3D						
Reference Wellpath:	1	Db: Sybase					

NO GLOBAL SCAN: Using user defined selection & scan criteria				Reference:	Plan: Plan #1
Interpolation Method:	MD	Interval:	100.00 ft	Error Model:	ISCWSA Ellipse
Depth Range:	0.00 to	14724.89 ft		Scan Method:	Closest Approach 3D
Maximum Radius:	10000.00 ft			Error Surface:	Ellipse

Plan: Plan #1	Date Composed:	6/25/2007
	Version:	1
Principal: Yes	Tied-to:	From Surface

Summary

<----- Offset Wellpath ----->	Reference	Offset	Ctr-Ctr	Edge	Separation	Warning	
Site	Well	Wellpath	MD ft	MD ft	Distance ft	Distance ft	Factor
BERRY 11-15D PAD	BERRY 11-2D	1 V0 Plan: Plan #1 V1	1600.00	1600.92	20.46	13.15	2.80

Site: BERRY 11-15D PAD
Well: BERRY 11-2D
Wellpath: 1 V0 Plan: Plan #1 V1

Inter-Site Error: 0.00 ft

Reference MD ft	TVD ft	Offset MD ft	TVD ft	Semi-Major Axis Ref ft	Offset ft	TFO-HS deg	Offset Location North ft	East ft	Ctr-Ctr Distance ft	Edge Distance ft	Separation Factor	Warning
0.00	0.00	0.00	0.00	0.00	0.00	297.47	6.66	-12.81	14.44			No Data
100.00	100.00	100.00	100.00	0.08	0.08	297.47	6.66	-12.81	14.44	14.27	89.20	
200.00	200.00	200.00	200.00	0.31	0.31	297.47	6.66	-12.81	14.44	13.82	23.61	
300.00	300.00	300.00	300.00	0.53	0.53	297.47	6.66	-12.81	14.44	13.37	13.61	
400.00	400.00	400.00	400.00	0.76	0.76	297.47	6.66	-12.81	14.44	12.93	9.56	
500.00	500.00	500.00	500.00	0.98	0.98	297.47	6.66	-12.81	14.44	12.48	7.37	
600.00	600.00	600.00	600.00	1.20	1.20	297.47	6.66	-12.81	14.44	12.03	5.99	
700.00	700.00	700.00	700.00	1.43	1.43	297.47	6.66	-12.81	14.44	11.58	5.05	
800.00	800.00	800.00	800.00	1.65	1.65	297.47	6.66	-12.81	14.44	11.13	4.36	
900.00	900.00	900.00	900.00	1.88	1.88	297.47	6.66	-12.81	14.44	10.68	3.84	
1000.00	1000.00	1000.00	1000.00	2.10	2.10	297.47	6.66	-12.81	14.44	10.23	3.43	
1100.00	1099.98	1100.22	1100.20	2.33	2.33	123.59	4.91	-12.84	14.64	9.98	3.14	
1200.00	1199.84	1200.44	1200.28	2.56	2.56	122.22	-0.35	-12.94	15.25	10.13	2.98	
1300.00	1299.45	1300.66	1300.10	2.80	2.80	120.18	-9.10	-13.11	16.28	10.68	2.91	
1400.00	1398.70	1400.86	1399.55	3.06	3.07	117.72	-21.34	-13.35	17.75	11.65	2.91	
1500.00	1497.71	1501.01	1498.46	3.34	3.35	110.68	-37.03	-13.65	19.05	12.37	2.85	
1600.00	1596.72	1600.92	1596.52	3.64	3.68	94.89	-56.12	-14.02	20.46	13.15	2.80	
1700.00	1695.74	1700.59	1693.86	3.94	4.04	76.41	-77.54	-14.44	23.94	16.04	3.03	
1800.00	1794.75	1800.27	1791.19	4.25	4.42	63.43	-99.04	-14.85	29.27	20.83	3.47	
1900.00	1893.76	1899.95	1888.52	4.56	4.81	54.74	-120.54	-15.27	35.62	26.68	3.99	
2000.00	1992.77	1999.62	1985.86	4.88	5.22	48.76	-142.04	-15.69	42.53	33.10	4.51	
2100.00	2091.78	2099.30	2083.19	5.21	5.64	44.49	-163.54	-16.10	49.77	39.84	5.01	
2200.00	2190.79	2198.98	2180.52	5.53	6.06	41.31	-185.04	-16.52	57.22	46.78	5.48	
2300.00	2289.80	2298.66	2277.85	5.86	6.49	38.87	-206.54	-16.93	64.81	53.85	5.92	
2400.00	2388.82	2398.34	2375.18	6.20	6.92	36.94	-228.05	-17.35	72.48	61.01	6.32	
2500.00	2487.83	2498.02	2472.51	6.53	7.36	35.39	-249.55	-17.77	80.22	68.24	6.69	
2600.00	2586.84	2597.70	2569.84	6.87	7.80	34.11	-271.05	-18.18	88.01	75.50	7.04	
2700.00	2685.85	2697.37	2667.17	7.20	8.24	33.03	-292.55	-18.60	95.84	82.81	7.35	
2800.00	2784.86	2797.05	2764.50	7.54	8.69	32.12	-314.05	-19.02	103.70	90.14	7.65	
2900.00	2883.87	2896.73	2861.84	7.88	9.14	31.34	-335.55	-19.43	111.57	97.48	7.92	
3000.00	2982.88	2996.41	2959.17	8.22	9.59	30.66	-357.05	-19.85	119.47	104.85	8.17	
3100.00	3081.90	3096.09	3056.50	8.56	10.04	30.07	-378.55	-20.26	127.38	112.23	8.41	
3200.00	3180.91	3195.77	3153.83	8.90	10.49	29.54	-400.05	-20.68	135.30	119.62	8.63	
3300.00	3279.92	3295.44	3251.16	9.25	10.94	29.07	-421.55	-21.10	143.23	127.02	8.83	
3400.00	3378.93	3395.12	3348.49	9.59	11.40	28.66	-443.05	-21.51	151.17	134.42	9.03	
3500.00	3477.94	3494.80	3445.82	9.93	11.85	28.28	-464.55	-21.93	159.12	141.84	9.21	

Weatherford International, Ltd.

Anticollision Report

Company:	BERRY PETROLEUM COMPANY	Date:	6/25/2007	Time:	13:59:03	Page:	2
Field:	GARFIELD COUNTY (NAD 83)	Co-ordinate(NE) Reference:		Well: BERRY 11-3D, True North			
Reference Site:	BERRY 11-15D PAD	Vertical (TVD) Reference:		SITE 8179.0			
Reference Well:	BERRY 11-3D						
Reference Wellpath:	1	Db: Sybase					

Site: BERRY 11-15D PAD
Well: BERRY 11-2D
Wellpath: 1 V0 Plan: Plan #1 V1

Inter-Site Error: 0.00 ft

Reference		Offset		Semi-Major Axis			Offset Location		Ctr-Ctr Distance	Edge Distance	Separation Factor	Warning
MD	TVD	MD	TVD	Ref	Offset	TFO-HS	North	East				
ft	ft	ft	ft	ft	ft	deg	ft	ft	ft	ft		
3600.00	3576.95	3594.48	3543.15	10.28	12.31	27.94	-486.05	-22.34	167.08	149.25	9.37	
3700.00	3675.96	3694.16	3640.48	10.62	12.76	27.63	-507.56	-22.76	175.04	156.68	9.53	
3800.00	3774.98	3793.84	3737.82	10.97	13.22	27.35	-529.06	-23.18	183.00	164.10	9.68	
3900.00	3873.99	3893.52	3835.15	11.31	13.68	27.09	-550.56	-23.59	190.97	171.53	9.83	
4000.00	3973.00	3993.19	3932.48	11.66	14.14	26.85	-572.06	-24.01	198.94	178.97	9.96	
4100.00	4072.01	4092.87	4029.81	12.00	14.59	26.63	-593.56	-24.43	206.91	186.40	10.09	
4200.00	4171.02	4192.55	4127.14	12.35	15.05	26.43	-615.06	-24.84	214.89	193.84	10.21	
4300.00	4270.03	4292.23	4224.47	12.70	15.51	26.24	-636.56	-25.26	222.87	201.28	10.32	
4400.00	4369.04	4391.91	4321.80	13.04	15.97	26.06	-658.06	-25.67	230.85	208.72	10.43	
4500.00	4468.06	4491.59	4419.13	13.39	16.43	25.90	-679.56	-26.09	238.84	216.17	10.54	
4600.00	4567.07	4591.26	4516.46	13.74	16.89	25.74	-701.06	-26.51	246.82	223.61	10.63	
4700.00	4666.08	4690.94	4613.80	14.08	17.35	25.60	-722.56	-26.92	254.81	231.06	10.73	
4800.00	4765.09	4790.62	4711.13	14.43	17.81	25.47	-744.06	-27.34	262.80	238.51	10.82	
4900.00	4864.10	4890.30	4808.46	14.78	18.27	25.34	-765.57	-27.75	270.79	245.96	10.90	
5000.00	4963.11	4989.98	4905.79	15.13	18.74	25.22	-787.07	-28.17	278.78	253.41	10.99	
5100.00	5062.12	5089.66	5003.12	15.47	19.20	25.11	-808.57	-28.59	286.78	260.86	11.06	
5200.00	5161.14	5189.89	5101.00	15.82	19.65	25.00	-830.18	-29.01	294.76	268.30	11.14	
5300.00	5260.15	5294.87	5203.75	16.17	19.98	24.96	-851.68	-29.42	301.70	274.73	11.19	
5400.00	5359.16	5400.07	5307.09	16.52	20.29	25.03	-871.33	-29.80	306.88	279.41	11.17	
5500.00	5458.17	5505.42	5410.93	16.87	20.59	25.20	-889.11	-30.15	310.32	282.33	11.09	
5600.00	5557.18	5610.85	5515.15	17.21	20.87	25.48	-904.98	-30.45	312.02	283.50	10.94	
5700.00	5656.33	5716.30	5619.68	17.44	21.12	25.78	-918.94	-30.72	312.91	283.94	10.80	
5800.00	5755.70	5821.77	5724.45	17.66	21.36	26.04	-930.98	-30.96	313.62	284.23	10.67	
5900.00	5855.24	5927.24	5829.44	17.86	21.58	26.27	-941.08	-31.15	314.17	284.37	10.54	
6000.00	5954.94	6032.71	5934.59	18.05	21.78	26.46	-949.26	-31.31	314.54	284.36	10.42	
6100.00	6054.75	6138.19	6039.89	18.23	21.96	26.61	-955.49	-31.43	314.73	284.19	10.31	
6200.00	6154.66	6243.67	6145.27	18.39	22.12	26.73	-959.79	-31.51	314.74	283.87	10.20	
6300.00	6254.63	6349.14	6250.72	18.54	22.26	26.81	-962.14	-31.56	314.57	283.39	10.09	
6400.00	6354.62	6453.05	6354.62	18.68	22.38	200.25	-962.64	-31.57	314.29	283.09	10.07	
6500.00	6454.62	6553.05	6454.62	18.85	22.51	200.25	-962.64	-31.57	314.29	282.71	9.95	
6600.00	6554.62	6653.05	6554.62	19.02	22.65	200.25	-962.64	-31.57	314.29	282.32	9.83	
6700.00	6654.62	6753.05	6654.62	19.19	22.80	200.25	-962.64	-31.57	314.29	281.93	9.71	
6800.00	6754.62	6853.05	6754.62	19.36	22.94	200.25	-962.64	-31.57	314.29	281.54	9.60	
6900.00	6854.62	6953.05	6854.62	19.53	23.09	200.25	-962.64	-31.57	314.29	281.14	9.48	
7000.00	6954.62	7053.05	6954.62	19.71	23.23	200.25	-962.64	-31.57	314.29	280.75	9.37	
7100.00	7054.62	7153.05	7054.62	19.88	23.38	200.25	-962.64	-31.57	314.29	280.35	9.26	
7200.00	7154.62	7253.05	7154.62	20.06	23.53	200.25	-962.64	-31.57	314.29	279.95	9.15	
7300.00	7254.62	7353.05	7254.62	20.24	23.68	200.25	-962.64	-31.57	314.29	279.55	9.05	
7400.00	7354.62	7453.05	7354.62	20.42	23.83	200.25	-962.64	-31.57	314.29	279.15	8.94	
7500.00	7454.62	7553.05	7454.62	20.60	23.98	200.25	-962.64	-31.57	314.29	278.75	8.84	
7600.00	7554.62	7653.05	7554.62	20.78	24.14	200.25	-962.64	-31.57	314.29	278.35	8.74	
7700.00	7654.62	7753.05	7654.62	20.96	24.29	200.25	-962.64	-31.57	314.29	277.94	8.65	
7800.00	7754.62	7853.05	7754.62	21.14	24.45	200.25	-962.64	-31.57	314.29	277.54	8.55	
7900.00	7854.62	7953.05	7854.62	21.32	24.60	200.25	-962.64	-31.57	314.29	277.13	8.46	
8000.00	7954.62	8053.05	7954.62	21.51	24.76	200.25	-962.64	-31.57	314.29	276.73	8.37	
8100.00	8054.62	8153.05	8054.62	21.69	24.92	200.25	-962.64	-31.57	314.29	276.32	8.28	
8200.00	8154.62	8253.05	8154.62	21.88	25.08	200.25	-962.64	-31.57	314.29	275.91	8.19	
8300.00	8254.62	8353.05	8254.62	22.06	25.24	200.25	-962.64	-31.57	314.29	275.50	8.10	
8400.00	8354.62	8453.05	8354.62	22.25	25.40	200.25	-962.64	-31.57	314.29	275.09	8.02	
8500.00	8454.62	8553.05	8454.62	22.44	25.57	200.25	-962.64	-31.57	314.29	274.68	7.93	
8600.00	8554.62	8653.05	8554.62	22.63	25.73	200.25	-962.64	-31.57	314.29	274.27	7.85	

Weatherford International, Ltd.

Anticollision Report

Company:	BERRY PETROLEUM COMPANY	Date:	6/25/2007	Time:	13:59:03	Page:	3
Field:	GARFIELD COUNTY (NAD 83)	Co-ordinate(NE) Reference:	Well: BERRY 11-3D, True North				
Reference Site:	BERRY 11-15D PAD	Vertical (TVD) Reference:	SITE 8179.0				
Reference Well:	BERRY 11-3D						
Reference Wellpath:	1	Db: Sybase					

Site: BERRY 11-15D PAD
Well: BERRY 11-2D
Wellpath: 1 V0 Plan: Plan #1 V1

Inter-Site Error: 0.00 ft

Reference		Offset		Semi-Major Axis			Offset Location		Ctr-Ctr Distance ft	Edge Distance ft	Separation Factor	Warning
MD ft	TVD ft	MD ft	TVD ft	Ref ft	Offset ft	TFO-HS deg	North ft	East ft				
8700.00	8654.62	8753.05	8654.62	22.81	25.89	200.25	-962.64	-31.57	314.29	273.85	7.77	
8800.00	8754.62	8853.05	8754.62	23.00	26.06	200.25	-962.64	-31.57	314.29	273.44	7.69	
8900.00	8854.62	8953.05	8854.62	23.19	26.23	200.25	-962.64	-31.57	314.29	273.03	7.62	
9000.00	8954.62	9053.05	8954.62	23.38	26.39	200.25	-962.64	-31.57	314.29	272.61	7.54	
9100.00	9054.62	9153.05	9054.62	23.58	26.56	200.25	-962.64	-31.57	314.29	272.19	7.47	