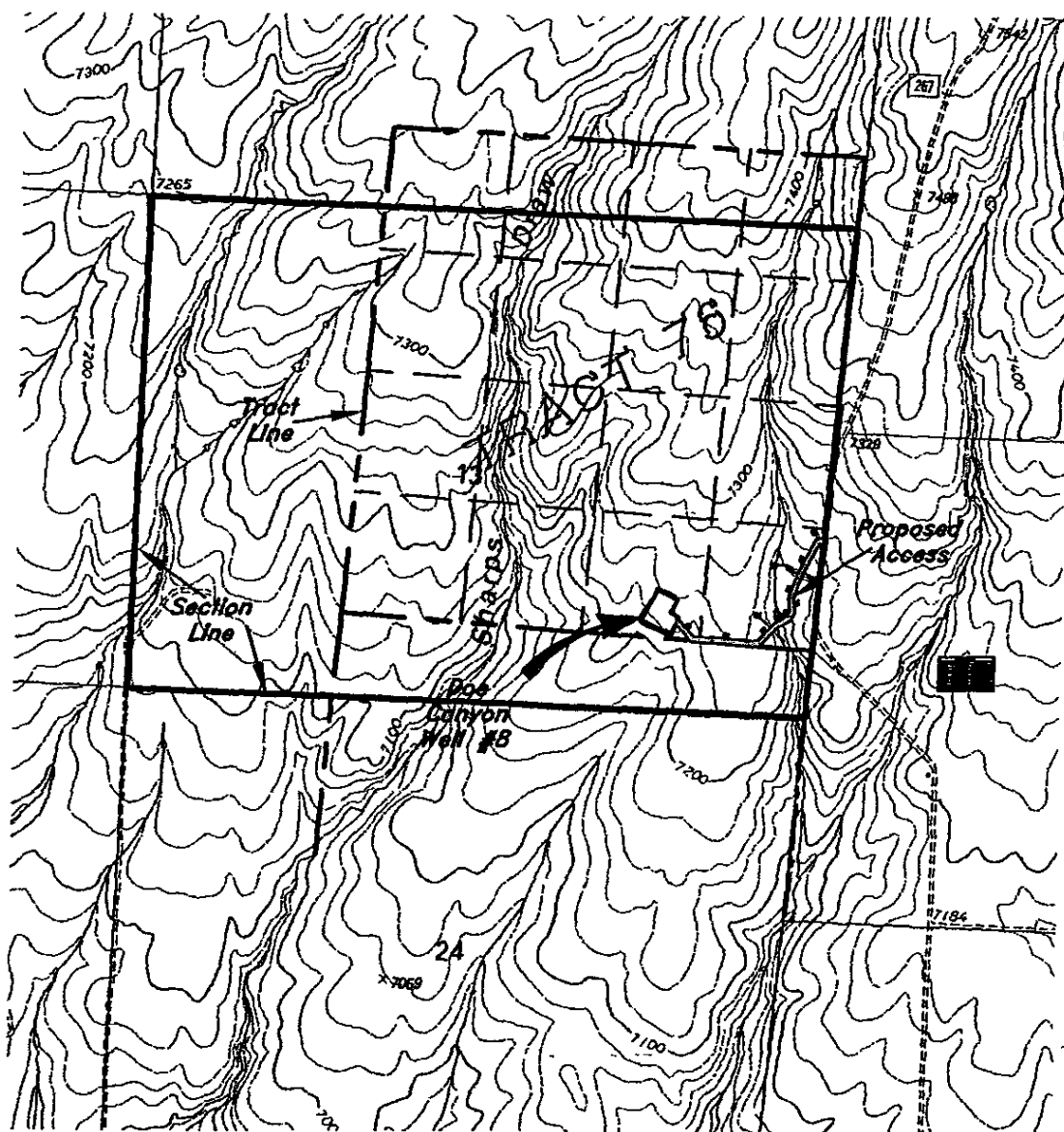


# KINDER MORGAN DC WELL #8

Section 13, T.40N., R.18W, N.M.P.M.,  
Dolores County, Colorado



U.S.G.S. TOPO QUAD  
CAHONE

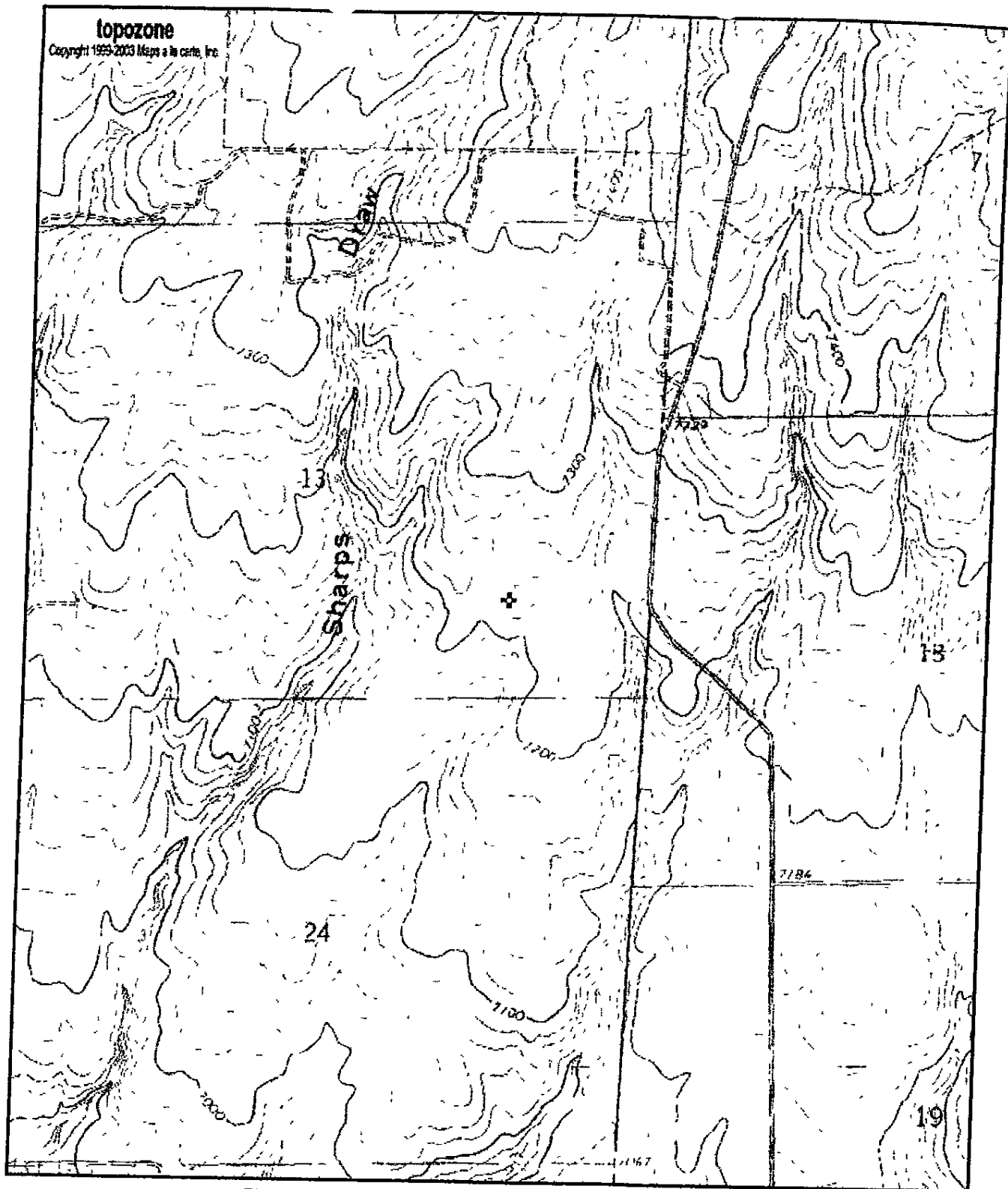


SCALE: 1" = 2000'

**MANESS & Associates Inc.**  
REGISTERED LAND SURVEYORS

28 S. Washington - P.O. Box 1163 - Cortez, CO. 81321  
Date: November 22, 2006 Phone: 970/565-8845 File: 2006-10-R10

topozone  
Copyright 1999-2003 Maps & More, Inc.



0 0.3 0.6 0.9 1.2 1.5 km

UTM 12 695102E 4177825N (NAD27)  
USGS Cahone (CO) Quadrangle  
Projection is UTM Zone 12 NAD83 Datum

\* M  
1 521  
1 355

of 1 DRIES/HEATON

#8

LONG. 108° 47' 12.5"

LAT. 37° 43' 43.6"

10/27/2006 10 09 AM