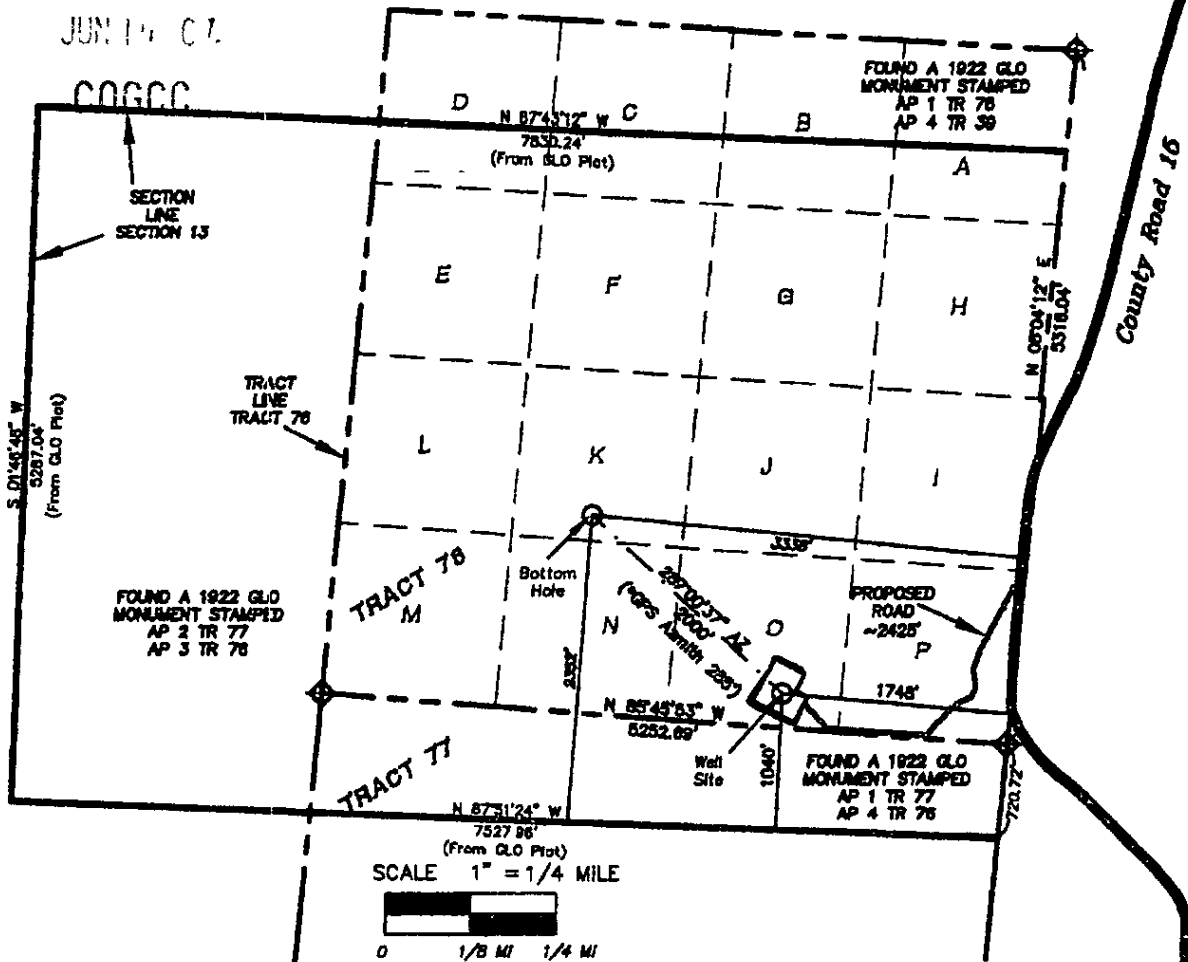


REC'D 10/11

JUN 14 07

COGCC



**LEGEND**

- Well Location
- ◆ Found Monument As Shown
- Proposed Well Pad
- - - Section Lines

**Well Location Description**

**KINDER MORGAN CO2 COMPANY, L.P.**

**DOE CANYON WELL #8**

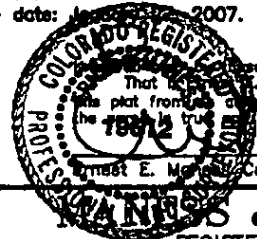
**SURFACE LOCATION -**  
 1040' FSL & 1748' FEL  
 7224.5' GROUND ELEVATION

**BOTTOM HOLE LOCATION**  
 2352' FSL & 3338' FEL

**ALL IN SECTION 13, TRACT 76,**  
 T 40 N, R 18 W, N.M.P.M.  
**DOLORES COUNTY, COLORADO**  
**DCW #8**

**NOTES:**

- 1) Bearings are based on GPS observations and converted to State Plane. (Rotation: 02°00'37" Clockwise, Scale: 0.999606.)
- 2) Surface ownership - Doves/Heaton
- 3) Elevations are based on GPS observations post processed with OPUS. Referenced by a monument at SE cor. Sec. 20 Elev. 7304.4 (Doe Canyon, Colo. Quad sheet Elev. 7303)
- 4) Surface area: Native shrubs and grasses.
- 5) Initial field survey: November 10, 2006.
- 6) No visible improvements other than those shown are within 200' of site.
- 7) Well locations based on GPS observations:  
 Surface - Lat. 37.72887N Long. 108.78655W  
 Surface - UTM 4178040N, 695060E NAD 83 Zone 12  
 Bottom Hole - Lat. 37.73248N Long. 108.79177W  
 Bottom Hole - UTM 4178429N, 694591E NAD 83 Zone 12
- 8) GPS receivers set to exclude PDOP values over 6.
- 9) Partial Section 13, Tract 76 dimensions from 1927 GLO Plat, others are field measurements.
- 10) Revision date: 12/14/2007.



**MANESS & Associates Inc.**  
 REGISTERED LAND SURVEYORS

28 S. Washington - P.O. Box 1163 - Cortez, CO. 81321  
 Date: December 14, 2006 Phone: 970/565-8845 File: 2006-10-R10