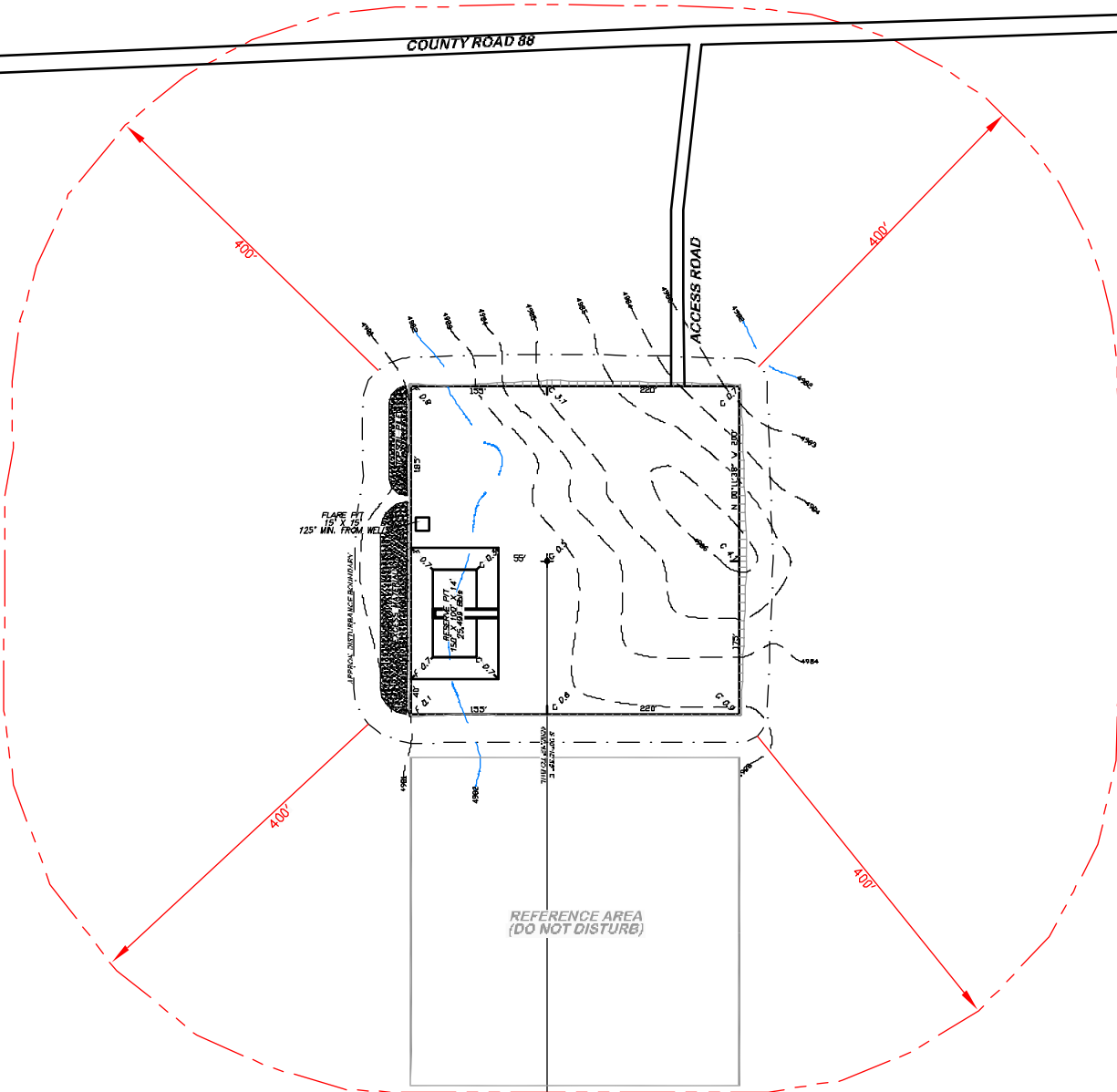
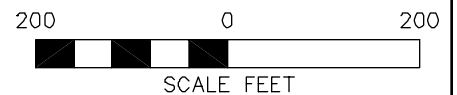


APPROXIMATE DISTURBANCE AREA: 4.7 ACRES±
 1.4% GRADE ON A WESTERLY SLOPE
 UNGRADED ELEVATION: 4982.5'
 FINISHED ELEVATION: 4982.0'



**BEFORE DIGGING
 CALL FOR
 UTILITY LINE LOCATION**

NOTE: THE EARTH QUANTITIES ON
 THIS DRAWING ARE ESTIMATED
 AND THE USE OF IS AT THE
 RESPONSIBILITY OF THE USER.



(307) 362-5028

RIFFIN & ASSOCIATES, INC.
 1414 ELK ST., ROCK SPRINGS, WY 82901

DRAWN: 10/20/10 - MMM

SCALE: 1" = 200'

REVISED: 11/23/10 - KRH

DRG JOB No. 18168

REVISED BHL

EXHIBIT 2D

LOCATION DRAWING

CHESAPEAKE ENERGY CORPORATION
STATE 8-61 36-1H
SECTION 36, T8N, R61W

UNGRADED ELEVATION: 4982.5'
FINISHED ELEVATION: 4982.0'