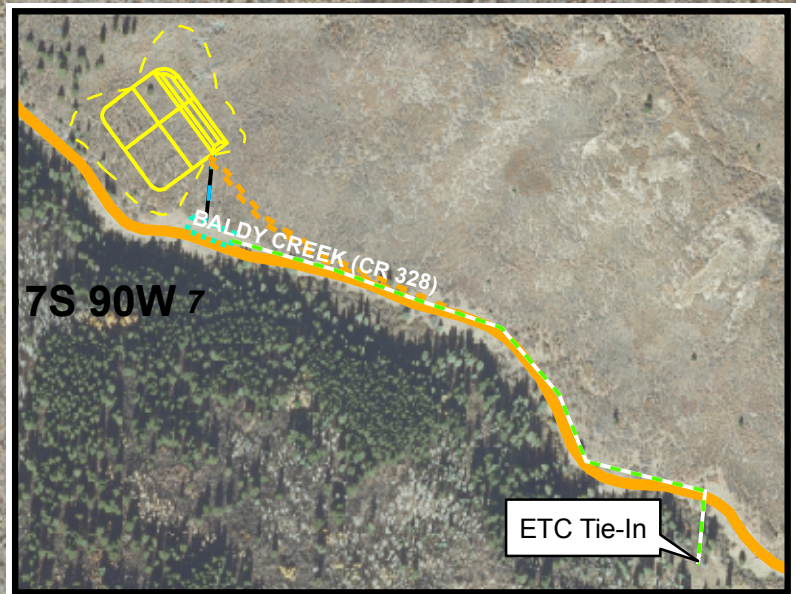


### Geologist Information

General: New location; 1 new well (22 total future wells)  
Ownership: FED surface/ FED minerals  
SUA Status: N/A  
Spacing Units: 1 spacing unit  
Adjacent Owners: BLM



7S 90W

7

BALDY CREEK (CR 328)

### Plan of Development

Access: Use new access from CR as shown on map  
Drilling: Efficiency rig  
Cuttings: In trench on location  
SIMOPS: No (yes for second visit)  
Completion: Frac on pad  
Flowback: On pad  
Prod Equip: Production equipment to be on pad for first visit. For second visit, tanks will be placed in tank area as shown and separator units to be on pad. A water and condensate line will run from the separators straight down to the tank area.  
Pipeline: A new gas line will be installed from the separators, down the access road, down the CR and tie into the ETC pipeline. Route and dimensions TBD.



0 100 200 400 Feet

### Legend

- Pipeline (Valley, Proposed)
- Proposed Road
- Proposed Production Equipment Area
- Proposed Daylight Line
- Proposed Pad or Pit
- Proposed Water/Condensate Line
- Road (County Road - Garfield County)

Williams Production RMT

CMU 22-7 Plan of Development  
T7S R90W, Section 7

Date Prepared: December 13, 2010

