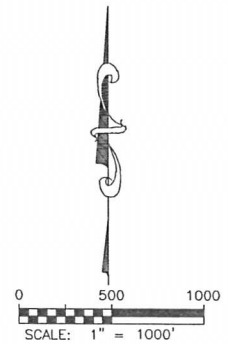
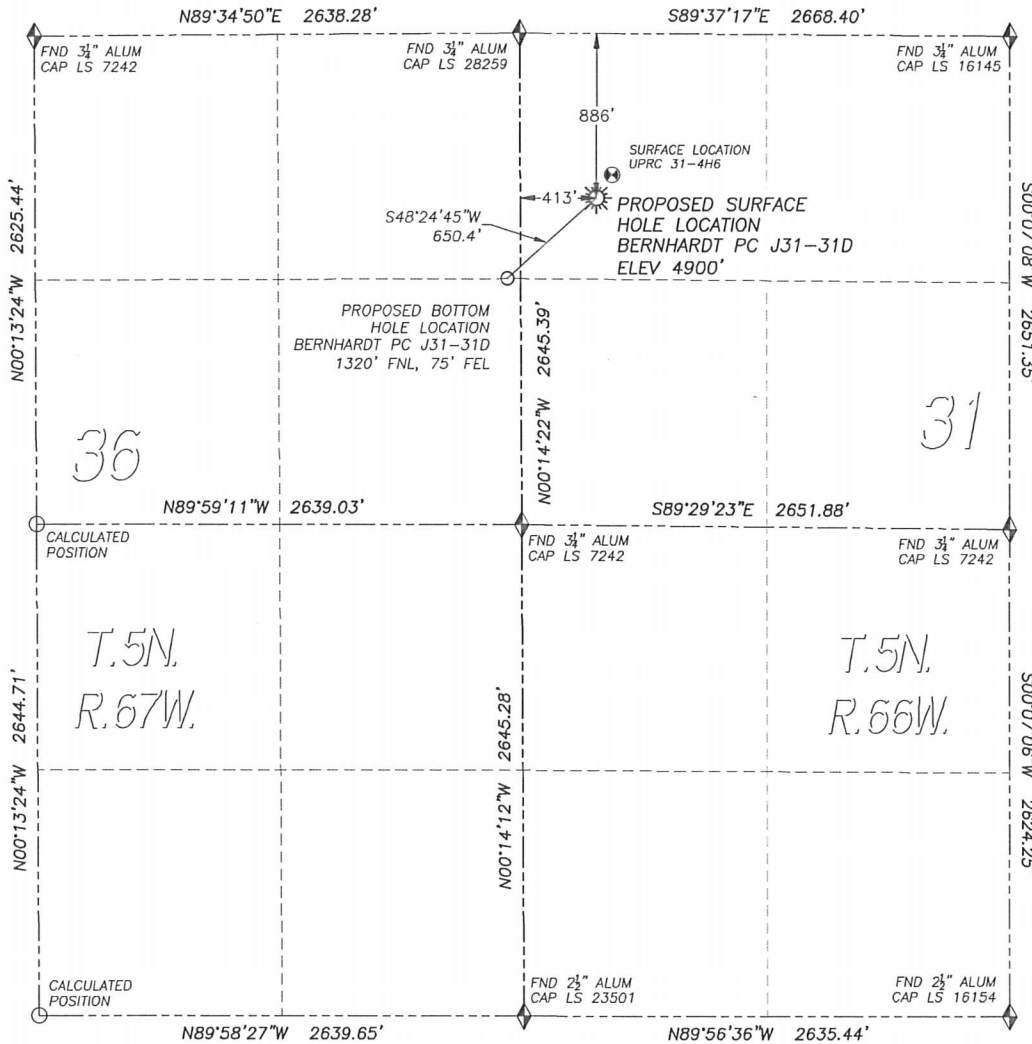


WELL LOCATION CERTIFICATE

BERNHARDT PC J31-31D

SECTION 31, TOWNSHIP 5 NORTH, RANGE 66 WEST OF THE 6TH PRINCIPAL MERIDIAN



LEGEND

- ◆ FOUND MONUMENT AS DESCRIBED
- ☀ PROPOSED WELL
- ⊙ EXISTING WELL
- BOTTOM HOLE
- ⊘ ABANDONED WELL

NAD 83 LATITUDE AND LONGITUDE

BERNHARDT PC J31-31D SURFACE HOLE:

LATITUDE: N40.36089°
 LONGITUDE: W104.83055°
 ELEVATION: 4900'
 PDOP 2.6
 886' FNL, 413' FWL

BOTTOM HOLE:

LATITUDE: N40.35970°
 LONGITUDE: W104.83230°
 1320' FNL, 75' FEL SEC 36, T5N, R66W

NEAREST EXISTING WELL:

UPRC 31-4H6 SURFACE HOLE
 LATITUDE: N40.36123°
 LONGITUDE: W104.83025°
 ELEVATION: 4898'
 152' NORTHEAST

QUARTER/QUARTER: NW4/NW4

NEAREST APPARENT PROPERTY LINE:
 413 ± WEST

IN ACCORDANCE WITH A REQUEST FROM MATT CAMPBELL OF NOBLE ENERGY INC., DALEY LAND SURVEYING, INC. HAS DETERMINED THE SURFACE LOCATION OF THE BERNHARDT PC J31-31D WELL TO BE 886' FNL, 413' FWL, AS MEASURED AT NINETY (90) DEGREES FROM THE SECTION LINES OF SECTION 31, TOWNSHIP 5 NORTH, RANGE 66 WEST OF THE 6TH PRINCIPAL MERIDIAN, WELD COUNTY, COLORADO. THE BOTTOM HOLE LOCATION, PROVIDED BY THE CLIENT, IS TO BE 1320' FNL, 75' FEL, OF SEC. 36, T5N., R.66W.

I HEREBY CERTIFY THAT THIS WELL LOCATION CERTIFICATE WAS PREPARED BY ME OR UNDER MY DIRECT SUPERVISION, THAT THE WORK WAS COMPLETED ON 8/6/2010 FOR AND ON BEHALF OF NOBLE ENERGY, INC., AND THAT THIS MAP DOES NOT REPRESENT A BOUNDARY SURVEY, IT IS NOT A LAND SURVEY PLAT OR AN IMPROVEMENT SURVEY PLAT AND IT IS NOT TO BE RELIED UPON FOR THE ESTABLISHMENT OF FENCE, BUILDING OR OTHER FUTURE IMPROVEMENT LINES.

NOTES:

- 1) BEARINGS FOR THIS MAP ARE ASSUMED AND BASED UPON GPS OBSERVATIONS MADE BETWEEN MONUMENTS LOCATED AT THE NORTHWEST CORNER AND THE WEST QUARTER CORNER OF SECTION 31, T5N., R.66W., AND ALL BEARINGS SHOWN HEREON ARE RELATIVE THERETO
- 2) HORIZONTAL DATUM IS NAD83.
- 3) VERTICAL DATUM IS NAVD88. ELEVATIONS ARE DERIVED FROM GPS OBSERVATIONS PROCESSED THROUGH OPUS, UTILIZING THE GEOID03 MODEL.
- 4) SEE VISIBLE IMPROVEMENTS EXHIBIT FOR VISIBLE IMPROVEMENTS WITHIN 600' OF PROPOSED SURFACE HOLE LOCATION.
- 5) SURFACE USE: AGRICULTURAL.

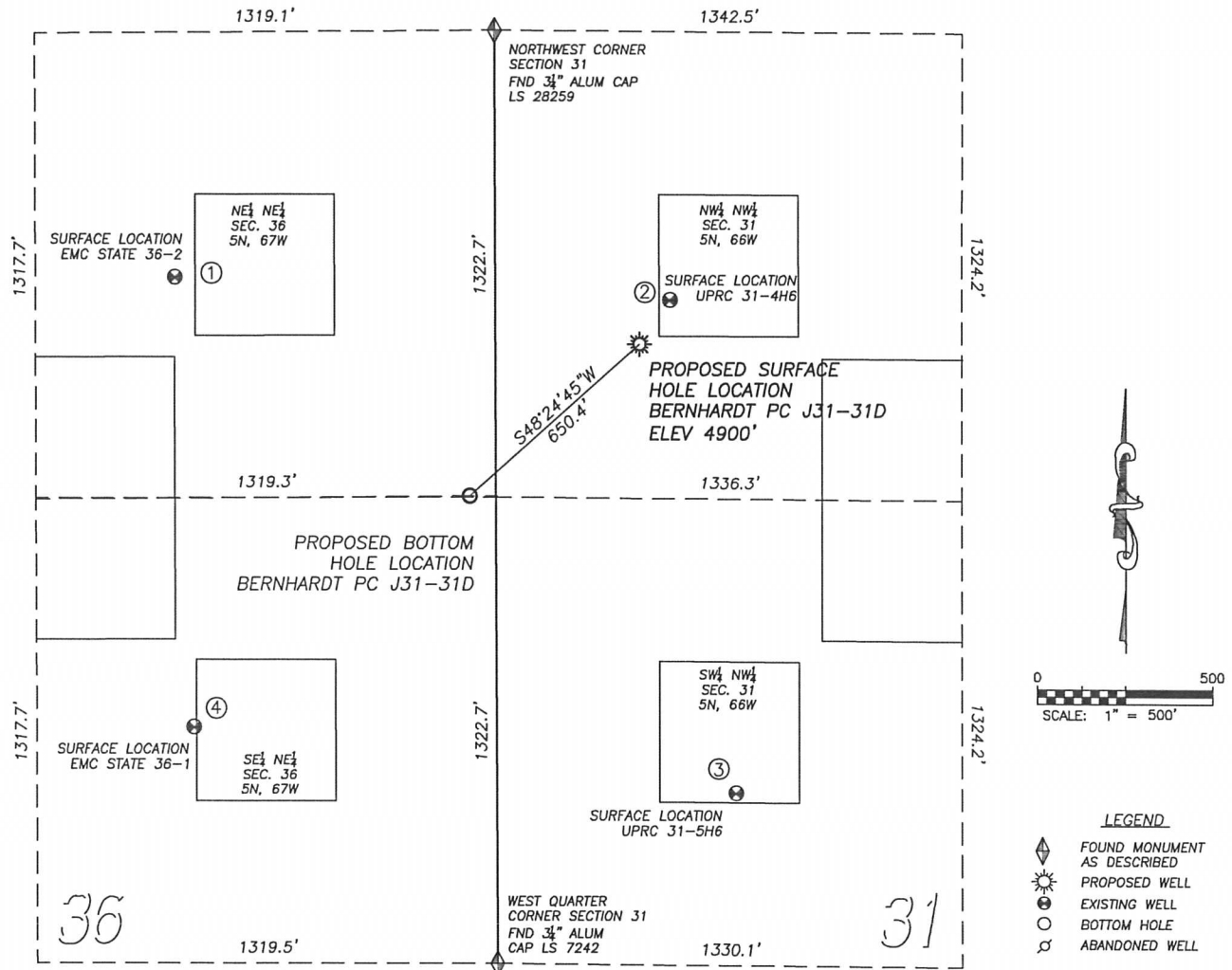
NOTICE: According to Colorado law you MUST commence any legal action based upon any defect in this W.L.C. within three years after you first discover such defect. In no event may any action based upon any such defect in this W.L.C. be commenced more than ten years from the date of the certification shown hereon.



FOR AND ON BEHALF OF
 DALEY LAND SURVEYING, INC.,
 Robert Daley, PLS 35597

SITE SKETCH BERNHARDT PC J31-31D

SECTION 31, TOWNSHIP 5 NORTH, RANGE 66 WEST OF THE 6TH PRINCIPAL MERIDIAN



①

EMC STATE 36-2

NE/NE SEC. 36
695' FNL, 919' FEL
1049' NW OF PROPOSED
BOTTOM HOLE LOCATION
LAT. N40.36140°
LONG. W104.83533°
EL: 4895'
PDOP 1.4

②

UPRC 31-4H6

NW/NW SEC. 31
761' FNL, 499' FWL
798' NE OF PROPOSED
BOTTOM HOLE LOCATION
LAT. N40.36123°
LONG. W104.83025°
EL: 489B'
PDOP 1.3

③

UPRC 31-5H6

SW/NW SEC. 31
2158' FNL, 684' FWL
1136' SE OF PROPOSED
BOTTOM HOLE LOCATION
LAT. N40.35739°
LONG. W104.82957°
EL: 4877'
PDOP 2.7

④

EMC STATE 36-1

SE/NE SEC. 36
1970' FNL, 867' FEL
1026' SW OF PROPOSED
BOTTOM HOLE LOCATION
LAT. N40.35790°
LONG. W104.83513°
EL: 4873'
PDOP 1.6

NOTES:

- THIS DOES NOT REPRESENT A BOUNDARY SURVEY
- THE LATITUDES AND LONGITUDES SHOWN ARE REFERENCED TO NAD83
- DATUM FOR ELEVATION IS NAVD83. ELEVATIONS ARE DERIVED FROM GPS-RTK OBSERVATIONS PROCESSED THROUGH OPUS, UTILIZING THE GEOID03 MODEL.

PAD DETAIL