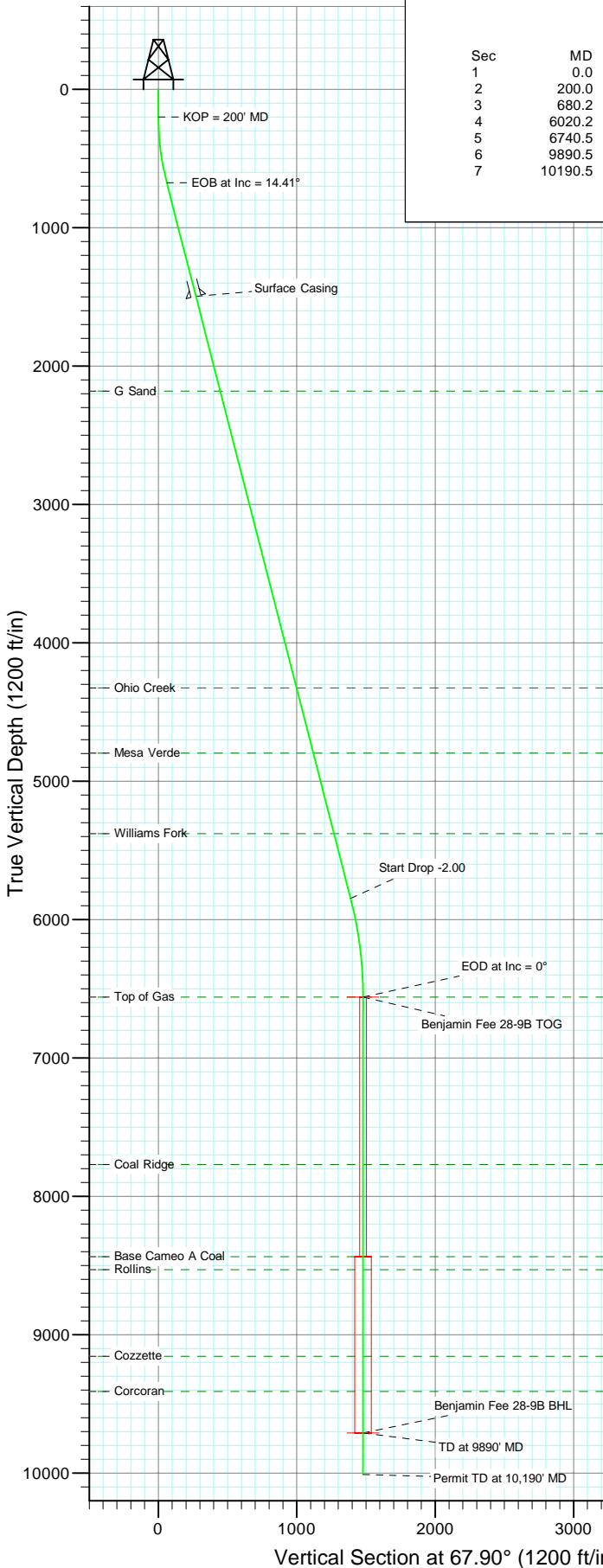


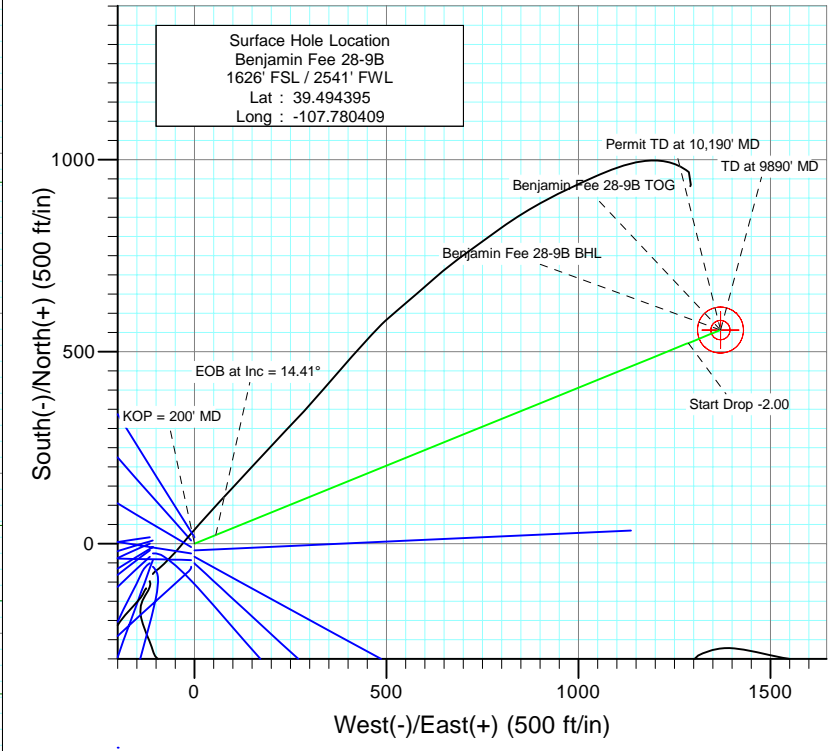


Project: Mamm Creek
 Site: K28NW Pad
 Well: Benjamin Fee 28-9B
 Wellbore: DD
 Design: Plan #2



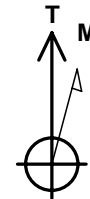
SECTION DETAILS

Sec	MD	Inc	Azi	TVD	+N/-S	+E/-W	Dleg	TFace	V Sect	Target
1	0.0	0.00	0.00	0.0	0.0	0.0	0.00	0.00	0.0	
2	200.0	0.00	0.00	200.0	0.0	0.0	0.00	0.00	0.0	
3	680.2	14.41	67.90	675.2	22.6	55.6	3.00	67.90	60.1	
4	6020.2	14.41	67.90	5847.2	522.4	1286.6	0.00	0.00	1388.6	
5	6740.5	0.00	0.00	6560.0	556.3	1370.1	2.00	180.00	1478.7	Benjamin Fee 28-9B TOG
6	9890.5	0.00	0.00	9710.0	556.3	1370.1	0.00	0.00	1478.7	Benjamin Fee 28-9B BHL
7	10190.5	0.00	0.00	10010.0	556.3	1370.1	0.00	0.00	1478.7	



FORMATION TOP DETAILS

TVDPATH	MDPATH	FORMATION
2181.0	2234.9	G Sand
4325.0	4448.5	Ohio Creek
4797.0	4935.9	Mesa Verde
5379.0	5536.8	Williams Fork
6560.0	6740.5	Top of Gas
7769.0	7949.5	Coal Ridge
8435.0	8615.5	Base Cameo A Coal
8530.0	8710.5	Rollins
9155.0	9335.5	Cozzette
9410.0	9590.5	Corcoran



Azimuths to True North
 Magnetic North: 10.30°

Magnetic Field
 Strength: 52364.7snT
 Dip Angle: 65.81°
 Date: 11/24/2010
 Model: IGRF200510

Plan #2
 Benjamin Fee 28-9B
 (2170 FSL - 1290 FEL) Job #10xxx: KR
 WELL @ 5965.0ft (Original Well Elev)
 North American Datum 1983
 Well Benjamin Fee 28-9B, True North

Target	Azimuth	Origin Type	N/S	E/W	
Benjamin Fee 28-9B BHL	67.90	Slot	0.0	0.0	
Name	TVD	+N/-S	+E/-W	Latitude	Longitude
Benjamin Fee 28-9B BHL	9710.0	556.3	1370.1	39.495922	-107.775554

Cathedral Energy Services

Planning Report

Database: EDM 5000.1 US Multi Users DB	Local Co-ordinate Reference: Well Benjamin Fee 28-9B
Company: EnCana Oil & Gas (USA) Inc	TVD Reference: WELL @ 5965.0ft (Original Well Elev)
Project: Mamm Creek	MD Reference: WELL @ 5965.0ft (Original Well Elev)
Site: K28NW Pad	North Reference: True
Well: Benjamin Fee 28-9B	Survey Calculation Method: Minimum Curvature
Wellbore: DD	
Design: Plan #2	

Project Mamm Creek		
Map System: US State Plane 1983	System Datum: Mean Sea Level	
Geo Datum: North American Datum 1983		
Map Zone: Colorado Central Zone		

Site K28NW Pad					
Site Position:		Northing:	1,613,160.16 ft	Latitude:	39.494711
From:	Lat/Long	Easting:	2,356,412.22 ft	Longitude:	-107.780819
Position Uncertainty:	0.0 ft	Slot Radius:	13.200 in	Grid Convergence:	-1.44 °

Well Benjamin Fee 28-9B						
Well Position	+N/-S	0.0 ft	Northing:	1,613,042.14 ft	Latitude:	39.494395
	+E/-W	0.0 ft	Easting:	2,356,525.13 ft	Longitude:	-107.780409
Position Uncertainty		0.0 ft	Wellhead Elevation:	ft	Ground Level:	5,943.0 ft

Wellbore DD					
Magnetics	Model Name	Sample Date	Declination	Dip Angle	Field Strength
	IGRF200510	11/24/2010	(°)	(°)	(nT)
			10.30	65.81	52,365

Design Plan #2					
Audit Notes:					
Version:	Phase:	PLAN	Tie On Depth:	0.0	
Vertical Section:	Depth From (TVD)	+N/-S	+E/-W	Direction	
	(ft)	(ft)	(ft)	(°)	
	0.0	0.0	0.0	67.90	

Plan Sections										
Measured Depth (ft)	Inclination (°)	Azimuth (°)	Vertical Depth (ft)	+N/-S (ft)	+E/-W (ft)	Dogleg Rate (°/100ft)	Build Rate (°/100ft)	Turn Rate (°/100ft)	TFO (°)	Target
0.0	0.00	0.00	0.0	0.0	0.0	0.00	0.00	0.00	0.00	
200.0	0.00	0.00	200.0	0.0	0.0	0.00	0.00	0.00	0.00	
680.2	14.41	67.90	675.2	22.6	55.6	3.00	3.00	0.00	67.90	
6,020.2	14.41	67.90	5,847.2	522.4	1,286.6	0.00	0.00	0.00	0.00	
6,740.5	0.00	0.00	6,560.0	556.3	1,370.1	2.00	-2.00	0.00	180.00	Benjamin Fee 28-9B I
9,890.5	0.00	0.00	9,710.0	556.3	1,370.1	0.00	0.00	0.00	0.00	Benjamin Fee 28-9B I
10,190.5	0.00	0.00	10,010.0	556.3	1,370.1	0.00	0.00	0.00	0.00	

Cathedral Energy Services

Planning Report

Database:	EDM 5000.1 US Multi Users DB	Local Co-ordinate Reference:	Well Benjamin Fee 28-9B
Company:	EnCana Oil & Gas (USA) Inc	TVD Reference:	WELL @ 5965.0ft (Original Well Elev)
Project:	Mamm Creek	MD Reference:	WELL @ 5965.0ft (Original Well Elev)
Site:	K28NW Pad	North Reference:	True
Well:	Benjamin Fee 28-9B	Survey Calculation Method:	Minimum Curvature
Wellbore:	DD		
Design:	Plan #2		

Planned Survey									
Measured Depth (ft)	Inclination (°)	Azimuth (°)	Vertical Depth (ft)	+N/-S (ft)	+E/-W (ft)	Vertical Section (ft)	Dogleg Rate (°/100ft)	Build Rate (°/100ft)	Comments / Formations
0.0	0.00	0.00	0.0	0.0	0.0	0.0	0.00	0.00	
100.0	0.00	0.00	100.0	0.0	0.0	0.0	0.00	0.00	
200.0	0.00	0.00	200.0	0.0	0.0	0.0	0.00	0.00	KOP = 200' MD
300.0	3.00	67.90	300.0	1.0	2.4	2.6	3.00	3.00	
400.0	6.00	67.90	399.6	3.9	9.7	10.5	3.00	3.00	
500.0	9.00	67.90	498.8	8.8	21.8	23.5	3.00	3.00	
600.0	12.00	67.90	597.1	15.7	38.7	41.7	3.00	3.00	
680.2	14.41	67.90	675.2	22.6	55.6	60.1	3.00	3.00	EOB at Inc = 14.41°
700.0	14.41	67.90	694.3	24.4	60.2	65.0	0.00	0.00	
800.0	14.41	67.90	791.2	33.8	83.3	89.9	0.00	0.00	
900.0	14.41	67.90	888.0	43.2	106.3	114.7	0.00	0.00	
1,000.0	14.41	67.90	984.9	52.5	129.4	139.6	0.00	0.00	
1,100.0	14.41	67.90	1,081.8	61.9	152.4	164.5	0.00	0.00	
1,200.0	14.41	67.90	1,178.6	71.2	175.5	189.4	0.00	0.00	
1,300.0	14.41	67.90	1,275.5	80.6	198.5	214.3	0.00	0.00	
1,400.0	14.41	67.90	1,372.3	90.0	221.6	239.1	0.00	0.00	
1,500.0	14.41	67.90	1,469.2	99.3	244.6	264.0	0.00	0.00	
1,527.0	14.41	67.90	1,495.3	101.9	250.8	270.7	0.00	0.00	Surface Casing
1,600.0	14.41	67.90	1,566.0	108.7	267.7	288.9	0.00	0.00	
1,700.0	14.41	67.90	1,662.9	118.0	290.7	313.8	0.00	0.00	
1,800.0	14.41	67.90	1,759.7	127.4	313.8	338.7	0.00	0.00	
1,900.0	14.41	67.90	1,856.6	136.8	336.8	363.5	0.00	0.00	
2,000.0	14.41	67.90	1,953.5	146.1	359.9	388.4	0.00	0.00	
2,100.0	14.41	67.90	2,050.3	155.5	382.9	413.3	0.00	0.00	
2,200.0	14.41	67.90	2,147.2	164.8	406.0	438.2	0.00	0.00	
2,234.9	14.41	67.90	2,181.0	168.1	414.0	446.9	0.00	0.00	G Sand
2,300.0	14.41	67.90	2,244.0	174.2	429.0	463.1	0.00	0.00	
2,400.0	14.41	67.90	2,340.9	183.6	452.1	487.9	0.00	0.00	
2,500.0	14.41	67.90	2,437.7	192.9	475.1	512.8	0.00	0.00	
2,600.0	14.41	67.90	2,534.6	202.3	498.2	537.7	0.00	0.00	
2,700.0	14.41	67.90	2,631.4	211.6	521.2	562.6	0.00	0.00	
2,800.0	14.41	67.90	2,728.3	221.0	544.3	587.5	0.00	0.00	
2,900.0	14.41	67.90	2,825.2	230.4	567.4	612.3	0.00	0.00	
3,000.0	14.41	67.90	2,922.0	239.7	590.4	637.2	0.00	0.00	
3,100.0	14.41	67.90	3,018.9	249.1	613.5	662.1	0.00	0.00	
3,200.0	14.41	67.90	3,115.7	258.5	636.5	687.0	0.00	0.00	
3,300.0	14.41	67.90	3,212.6	267.8	659.6	711.9	0.00	0.00	
3,400.0	14.41	67.90	3,309.4	277.2	682.6	736.7	0.00	0.00	
3,500.0	14.41	67.90	3,406.3	286.5	705.7	761.6	0.00	0.00	
3,600.0	14.41	67.90	3,503.1	295.9	728.7	786.5	0.00	0.00	
3,700.0	14.41	67.90	3,600.0	305.3	751.8	811.4	0.00	0.00	
3,800.0	14.41	67.90	3,696.9	314.6	774.8	836.3	0.00	0.00	
3,900.0	14.41	67.90	3,793.7	324.0	797.9	861.1	0.00	0.00	
4,000.0	14.41	67.90	3,890.6	333.3	820.9	886.0	0.00	0.00	
4,100.0	14.41	67.90	3,987.4	342.7	844.0	910.9	0.00	0.00	
4,200.0	14.41	67.90	4,084.3	352.1	867.0	935.8	0.00	0.00	
4,300.0	14.41	67.90	4,181.1	361.4	890.1	960.7	0.00	0.00	
4,400.0	14.41	67.90	4,278.0	370.8	913.1	985.5	0.00	0.00	
4,448.5	14.41	67.90	4,325.0	375.3	924.3	997.6	0.00	0.00	Ohio Creek
4,500.0	14.41	67.90	4,374.8	380.1	936.2	1,010.4	0.00	0.00	
4,600.0	14.41	67.90	4,471.7	389.5	959.2	1,035.3	0.00	0.00	
4,700.0	14.41	67.90	4,568.6	398.9	982.3	1,060.2	0.00	0.00	

Cathedral Energy Services

Planning Report

Database: EDM 5000.1 US Multi Users DB	Local Co-ordinate Reference: Well Benjamin Fee 28-9B
Company: EnCana Oil & Gas (USA) Inc	TVD Reference: WELL @ 5965.0ft (Original Well Elev)
Project: Mamm Creek	MD Reference: WELL @ 5965.0ft (Original Well Elev)
Site: K28NW Pad	North Reference: True
Well: Benjamin Fee 28-9B	Survey Calculation Method: Minimum Curvature
Wellbore: DD	
Design: Plan #2	

Planned Survey									
Measured Depth (ft)	Inclination (°)	Azimuth (°)	Vertical Depth (ft)	+N/-S (ft)	+E/-W (ft)	Vertical Section (ft)	Dogleg Rate (°/100ft)	Build Rate (°/100ft)	Comments / Formations
4,800.0	14.41	67.90	4,665.4	408.2	1,005.3	1,085.1	0.00	0.00	
4,900.0	14.41	67.90	4,762.3	417.6	1,028.4	1,109.9	0.00	0.00	
4,935.9	14.41	67.90	4,797.0	420.9	1,036.7	1,118.9	0.00	0.00	Mesa Verde
5,000.0	14.41	67.90	4,859.1	426.9	1,051.4	1,134.8	0.00	0.00	
5,100.0	14.41	67.90	4,956.0	436.3	1,074.5	1,159.7	0.00	0.00	
5,200.0	14.41	67.90	5,052.8	445.7	1,097.5	1,184.6	0.00	0.00	
5,300.0	14.41	67.90	5,149.7	455.0	1,120.6	1,209.5	0.00	0.00	
5,400.0	14.41	67.90	5,246.5	464.4	1,143.7	1,234.3	0.00	0.00	
5,500.0	14.41	67.90	5,343.4	473.7	1,166.7	1,259.2	0.00	0.00	
5,536.8	14.41	67.90	5,379.0	477.2	1,175.2	1,268.4	0.00	0.00	Williams Fork
5,600.0	14.41	67.90	5,440.3	483.1	1,189.8	1,284.1	0.00	0.00	
5,700.0	14.41	67.90	5,537.1	492.5	1,212.8	1,309.0	0.00	0.00	
5,800.0	14.41	67.90	5,634.0	501.8	1,235.9	1,333.9	0.00	0.00	
5,900.0	14.41	67.90	5,730.8	511.2	1,258.9	1,358.7	0.00	0.00	
6,000.0	14.41	67.90	5,827.7	520.5	1,282.0	1,383.6	0.00	0.00	
6,020.2	14.41	67.90	5,847.2	522.4	1,286.6	1,388.6	0.00	0.00	Start Drop -2.00
6,100.0	12.81	67.90	5,924.8	529.5	1,304.0	1,407.4	2.00	-2.00	
6,200.0	10.81	67.90	6,022.7	537.2	1,323.0	1,427.9	2.00	-2.00	
6,300.0	8.81	67.90	6,121.2	543.6	1,338.8	1,444.9	2.00	-2.00	
6,400.0	6.81	67.90	6,220.3	548.7	1,351.4	1,458.5	2.00	-2.00	
6,500.0	4.81	67.90	6,319.8	552.5	1,360.7	1,468.6	2.00	-2.00	
6,600.0	2.81	67.90	6,419.5	555.0	1,366.9	1,475.3	2.00	-2.00	
6,700.0	0.81	67.90	6,519.5	556.2	1,369.8	1,478.4	2.00	-2.00	
6,740.5	0.00	0.00	6,560.0	556.3	1,370.1	1,478.7	2.00	-2.00	EOD at Inc = 0° - Top of Gas - Benjamin Fee 28-9B
6,800.0	0.00	0.00	6,619.5	556.3	1,370.1	1,478.7	0.00	0.00	
6,900.0	0.00	0.00	6,719.5	556.3	1,370.1	1,478.7	0.00	0.00	
7,000.0	0.00	0.00	6,819.5	556.3	1,370.1	1,478.7	0.00	0.00	
7,100.0	0.00	0.00	6,919.5	556.3	1,370.1	1,478.7	0.00	0.00	
7,200.0	0.00	0.00	7,019.5	556.3	1,370.1	1,478.7	0.00	0.00	
7,300.0	0.00	0.00	7,119.5	556.3	1,370.1	1,478.7	0.00	0.00	
7,400.0	0.00	0.00	7,219.5	556.3	1,370.1	1,478.7	0.00	0.00	
7,500.0	0.00	0.00	7,319.5	556.3	1,370.1	1,478.7	0.00	0.00	
7,600.0	0.00	0.00	7,419.5	556.3	1,370.1	1,478.7	0.00	0.00	
7,700.0	0.00	0.00	7,519.5	556.3	1,370.1	1,478.7	0.00	0.00	
7,800.0	0.00	0.00	7,619.5	556.3	1,370.1	1,478.7	0.00	0.00	
7,900.0	0.00	0.00	7,719.5	556.3	1,370.1	1,478.7	0.00	0.00	
7,949.5	0.00	0.00	7,769.0	556.3	1,370.1	1,478.7	0.00	0.00	Coal Ridge
8,000.0	0.00	0.00	7,819.5	556.3	1,370.1	1,478.7	0.00	0.00	
8,100.0	0.00	0.00	7,919.5	556.3	1,370.1	1,478.7	0.00	0.00	
8,200.0	0.00	0.00	8,019.5	556.3	1,370.1	1,478.7	0.00	0.00	
8,300.0	0.00	0.00	8,119.5	556.3	1,370.1	1,478.7	0.00	0.00	
8,400.0	0.00	0.00	8,219.5	556.3	1,370.1	1,478.7	0.00	0.00	
8,500.0	0.00	0.00	8,319.5	556.3	1,370.1	1,478.7	0.00	0.00	
8,600.0	0.00	0.00	8,419.5	556.3	1,370.1	1,478.7	0.00	0.00	
8,615.5	0.00	0.00	8,435.0	556.3	1,370.1	1,478.7	0.00	0.00	Base Cameo A Coal
8,700.0	0.00	0.00	8,519.5	556.3	1,370.1	1,478.7	0.00	0.00	
8,710.5	0.00	0.00	8,530.0	556.3	1,370.1	1,478.7	0.00	0.00	Rollins
8,800.0	0.00	0.00	8,619.5	556.3	1,370.1	1,478.7	0.00	0.00	
8,900.0	0.00	0.00	8,719.5	556.3	1,370.1	1,478.7	0.00	0.00	
9,000.0	0.00	0.00	8,819.5	556.3	1,370.1	1,478.7	0.00	0.00	
9,100.0	0.00	0.00	8,919.5	556.3	1,370.1	1,478.7	0.00	0.00	
9,200.0	0.00	0.00	9,019.5	556.3	1,370.1	1,478.7	0.00	0.00	

Cathedral Energy Services

Planning Report

Database: EDM 5000.1 US Multi Users DB	Local Co-ordinate Reference: Well Benjamin Fee 28-9B
Company: EnCana Oil & Gas (USA) Inc	TVD Reference: WELL @ 5965.0ft (Original Well Elev)
Project: Mamm Creek	MD Reference: WELL @ 5965.0ft (Original Well Elev)
Site: K28NW Pad	North Reference: True
Well: Benjamin Fee 28-9B	Survey Calculation Method: Minimum Curvature
Wellbore: DD	
Design: Plan #2	

Planned Survey									
Measured Depth (ft)	Inclination (°)	Azimuth (°)	Vertical Depth (ft)	+N/-S (ft)	+E/-W (ft)	Vertical Section (ft)	Dogleg Rate (°/100ft)	Build Rate (°/100ft)	Comments / Formations
9,300.0	0.00	0.00	9,119.5	556.3	1,370.1	1,478.7	0.00	0.00	
9,335.5	0.00	0.00	9,155.0	556.3	1,370.1	1,478.7	0.00	0.00	Cozzette
9,400.0	0.00	0.00	9,219.5	556.3	1,370.1	1,478.7	0.00	0.00	
9,500.0	0.00	0.00	9,319.5	556.3	1,370.1	1,478.7	0.00	0.00	
9,590.5	0.00	0.00	9,410.0	556.3	1,370.1	1,478.7	0.00	0.00	Corcoran
9,600.0	0.00	0.00	9,419.5	556.3	1,370.1	1,478.7	0.00	0.00	
9,700.0	0.00	0.00	9,519.5	556.3	1,370.1	1,478.7	0.00	0.00	
9,800.0	0.00	0.00	9,619.5	556.3	1,370.1	1,478.7	0.00	0.00	
9,890.5	0.00	0.00	9,710.0	556.3	1,370.1	1,478.7	0.00	0.00	TD at 9890' MD - Benjamin Fee 28-9B BHL
9,900.0	0.00	0.00	9,719.5	556.3	1,370.1	1,478.7	0.00	0.00	
10,000.0	0.00	0.00	9,819.5	556.3	1,370.1	1,478.7	0.00	0.00	
10,100.0	0.00	0.00	9,919.5	556.3	1,370.1	1,478.7	0.00	0.00	
10,190.5	0.00	0.00	10,010.0	556.3	1,370.1	1,478.7	0.00	0.00	Permit TD at 10,190' MD

Targets									
Target Name - hit/miss target - Shape	Dip Angle (°)	Dip Dir. (°)	TVD (ft)	+N/-S (ft)	+E/-W (ft)	Northing (ft)	Easting (ft)	Latitude	Longitude
Benjamin Fee 28-9B BH - plan hits target center - Circle (radius 60.0)	0.00	0.00	9,710.0	556.3	1,370.1	1,613,563.89	2,357,908.74	39.495922	-107.775554
Benjamin Fee 28-9B TO - plan hits target center - Circle (radius 25.0)	0.00	0.00	6,560.0	556.3	1,370.1	1,613,563.89	2,357,908.74	39.495922	-107.775554

Casing Points					
Measured Depth (ft)	Vertical Depth (ft)	Name	Casing Diameter (in)	Hole Diameter (in)	
1,527.0	1,495.3	Surface Casing			

Formations					
Measured Depth (ft)	Vertical Depth (ft)	Name	Lithology	Dip (°)	Dip Direction (°)
2,234.9	2,181.0	G Sand			
4,448.5	4,325.0	Ohio Creek			
4,935.9	4,797.0	Mesa Verde			
5,536.8	5,379.0	Williams Fork			
6,740.5	6,560.0	Top of Gas			
7,949.5	7,769.0	Coal Ridge			
8,615.5	8,435.0	Base Cameo A Coal			
8,710.5	8,530.0	Rollins			
9,335.5	9,155.0	Cozzette			
9,590.5	9,410.0	Corcoran			

Cathedral Energy Services

Planning Report

Database:	EDM 5000.1 US Multi Users DB	Local Co-ordinate Reference:	Well Benjamin Fee 28-9B
Company:	EnCana Oil & Gas (USA) Inc	TVD Reference:	WELL @ 5965.0ft (Original Well Elev)
Project:	Mamm Creek	MD Reference:	WELL @ 5965.0ft (Original Well Elev)
Site:	K28NW Pad	North Reference:	True
Well:	Benjamin Fee 28-9B	Survey Calculation Method:	Minimum Curvature
Wellbore:	DD		
Design:	Plan #2		

Plan Annotations				
Measured Depth (ft)	Vertical Depth (ft)	Local Coordinates		Comment
		+N/-S (ft)	+E/-W (ft)	
200.0	200.0	0.0	0.0	KOP = 200' MD
680.2	675.2	22.6	55.6	EOB at Inc = 14.41°
6,020.2	5,847.2	522.4	1,286.6	Start Drop -2.00
6,740.5	6,560.0	556.3	1,370.1	EOD at Inc = 0°
9,890.5	9,710.0	556.3	1,370.1	TD at 9890' MD
10,190.5	10,010.0	556.3	1,370.1	Permit TD at 10,190' MD

EnCana Oil & Gas (USA) Inc

Mamm Creek

K28NW Pad

Benjamin Fee 28-9B

DD

Plan #2

Anticollision Report

23 November, 2010

Cathedral Energy Services

Anticollision Report

Company:	EnCana Oil & Gas (USA) Inc	Local Co-ordinate Reference:	Well Benjamin Fee 28-9B
Project:	Mamm Creek	TVD Reference:	WELL @ 5965.0ft (Original Well Elev)
Reference Site:	K28NW Pad	MD Reference:	WELL @ 5965.0ft (Original Well Elev)
Site Error:	0.0ft	North Reference:	True
Reference Well:	Benjamin Fee 28-9B	Survey Calculation Method:	Minimum Curvature
Well Error:	0.0ft	Output errors are at	2.00 sigma
Reference Wellbore	DD	Database:	EDM 5000.1 US Multi Users DB
Reference Design:	Plan #2	Offset TVD Reference:	Offset Datum

Reference	Plan #2		
Filter type:	NO GLOBAL FILTER: Using user defined selection & filtering criteria		
Interpolation Method:	Stations	Error Model:	Systematic Ellipse
Depth Range:	0.0 to 99,999.0ft	Scan Method:	Closest Approach 3D
Results Limited by:	Maximum center-center distance of 828.6ft	Error Surface:	Elliptical Conic
Warning Levels Evaluated at:	2.00 Sigma		

Survey Tool Program		Date	11/23/2010		
From (ft)	To (ft)	Survey (Wellbore)	Tool Name	Description	
0.0	10,190.5	Plan #2 (DD)	MWD	Geolink MWD	

Cathedral Energy Services

Anticollision Report

Company:	EnCana Oil & Gas (USA) Inc	Local Co-ordinate Reference:	Well Benjamin Fee 28-9B
Project:	Mamm Creek	TVD Reference:	WELL @ 5965.0ft (Original Well Elev)
Reference Site:	K28NW Pad	MD Reference:	WELL @ 5965.0ft (Original Well Elev)
Site Error:	0.0ft	North Reference:	True
Reference Well:	Benjamin Fee 28-9B	Survey Calculation Method:	Minimum Curvature
Well Error:	0.0ft	Output errors are at	2.00 sigma
Reference Wellbore	DD	Database:	EDM 5000.1 US Multi Users DB
Reference Design:	Plan #2	Offset TVD Reference:	Offset Datum

Summary						
Site Name	Reference Measured Depth (ft)	Offset Measured Depth (ft)	Distance Between Centres (ft)	Distance Between Ellipses (ft)	Separation Factor	Warning
K28NW Pad						
Benjamin 28-11 Existing - Existing - Existing	0.0	0.0	151.3			
Benjamin 28-11 Existing - Existing - Existing	100.0	99.3	151.5	151.3	558.359	ES
Benjamin 28-11 Existing - Existing - Existing	2,900.0	2,817.4	828.0	817.6	79.421	SF
Benjamin Federal 28-12B2 - DD - Plan #2	200.0	200.0	26.8	26.2	43.097	CC, ES
Benjamin Federal 28-12B2 - DD - Plan #2	400.0	397.6	39.5	38.2	29.166	SF
Benjamin Federal 28-12C1 - DD - Plan #2	200.0	200.0	43.4	42.8	69.841	CC, ES
Benjamin Federal 28-12C1 - DD - Plan #2	500.0	498.8	59.6	57.8	34.493	SF
Benjamin Federal 28-12C2 - DD - Plan #2	200.0	200.0	117.2	116.6	188.611	CC, ES
Benjamin Federal 28-12C2 - DD - Plan #2	500.0	477.1	159.3	157.7	96.283	SF
Benjamin Federal 28-13B1 - DD - Plan #2	200.0	200.0	108.4	107.8	174.478	CC, ES
Benjamin Federal 28-13B1 - DD - Plan #2	500.0	478.5	150.9	149.3	91.362	SF
Benjamin Federal 28-13B2 - DD - Plan #2	200.0	200.0	116.0	115.4	186.674	CC, ES
Benjamin Federal 28-13B2 - DD - Plan #2	500.0	477.8	158.7	157.0	96.307	SF
Benjamin Federal 28-13C1 - DD - Plan #2	200.0	200.0	108.3	107.7	174.373	CC, ES
Benjamin Federal 28-13C1 - DD - Plan #2	500.0	479.1	151.3	149.6	91.835	SF
Benjamin Federal 28-13C2 - DD - Plan #2	200.0	200.0	117.2	116.6	188.696	CC, ES
Benjamin Federal 28-13C2 - DD - Plan #2	500.0	478.4	160.0	158.3	97.132	SF
Benjamin Federal 28-14B1 - DD - Plan #2	200.0	200.0	60.3	59.7	97.038	CC, ES
Benjamin Federal 28-14B1 - DD - Plan #2	500.0	488.6	96.9	95.1	56.072	SF
Benjamin Federal 28-14B2 - DD - Plan #2	200.0	200.0	126.7	126.1	203.918	CC, ES
Benjamin Federal 28-14B2 - DD - Plan #2	2,200.0	2,052.8	803.5	795.2	96.563	SF
Benjamin Federal 28-14C - DD - Plan #2	200.0	200.0	116.1	115.5	186.849	CC, ES
Benjamin Federal 28-14C - DD - Plan #2	600.0	571.6	185.9	183.8	89.447	SF
Benjamin Federal 28-16C - DD - Plan #2	200.0	200.0	51.0	50.4	82.071	CC, ES
Benjamin Federal 28-16C - DD - Plan #2	900.0	865.0	177.1	172.2	36.507	SF
Benjamin Federal 33-3B - DD - Plan #2	200.0	200.0	123.4	122.8	198.623	CC, ES
Benjamin Federal 33-3B - DD - Plan #2	680.2	649.2	207.7	205.3	86.463	SF
Benjamin Federal 33-4B - DD - Plan #2	200.0	200.0	120.9	120.3	194.637	CC, ES
Benjamin Federal 33-4B - DD - Plan #2	500.0	477.7	164.3	162.7	100.212	SF
Benjamin Fee 28-10D2 - DD - Plan #2	200.0	200.0	17.1	16.5	27.552	CC, ES
Benjamin Fee 28-10D2 - DD - Plan #2	10,190.5	10,096.3	572.1	521.4	11.290	SF
Benjamin Fee 28-11A - DD - Plan #2	200.0	200.0	12.0	11.4	19.273	CC, ES
Benjamin Fee 28-11A - DD - Plan #2	300.0	299.6	15.4	14.4	15.729	SF
Benjamin Fee 28-11B - DD - Plan #2	200.0	200.0	11.7	11.1	18.849	CC, ES
Benjamin Fee 28-11B - DD - Plan #2	300.0	299.2	15.5	14.5	15.856	SF
Benjamin Fee 28-15A - DD - Plan #2	200.0	200.0	34.2	33.6	55.105	CC, ES
Benjamin Fee 28-15A - DD - Plan #2	4,200.0	4,115.4	810.5	778.1	24.978	SF
Benjamin Fee 28-6C - DD - Plan #2	200.0	200.0	16.8	16.1	26.966	CC, ES
Benjamin Fee 28-6C - DD - Plan #2	300.0	299.1	18.4	17.4	18.779	SF
Benjamin Fee 33-1B - DD - Plan #2	200.0	200.0	111.0	110.3	178.582	CC, ES
Benjamin Fee 33-1B - DD - Plan #2	1,700.0	1,640.7	412.2	400.7	35.923	SF
GMR 28-7D Existing - DD - Schlumberger Surveys	413.7	427.8	125.1	123.7	89.604	CC, ES
GMR 28-7D Existing - DD - Schlumberger Surveys	8,761.2	8,850.4	382.4	320.6	6.189	SF
GMU 28-14D Existing - Schlumberger Surveys - Schlumb	203.6	203.9	170.9	170.3	265.313	CC, ES
GMU 28-14D Existing - Schlumberger Surveys - Schlumb	1,000.0	950.9	335.5	332.1	97.835	SF
SWSW S27-T6S-R93W (M27NW Pad)						
GMR 28-10D (M27NW) Existing - DD - DD	6,109.7	6,899.9	818.2	751.8	12.314	CC
GMR 28-10D (M27NW) Existing - DD - DD	6,200.0	6,982.7	818.6	751.4	12.183	ES
GMR 28-10D (M27NW) Existing - DD - DD	6,600.0	7,343.9	827.3	758.3	11.979	SF

CC - Min centre to center distance or convergent point, SF - min separation factor, ES - min ellipse separation

Cathedral Energy Services

Anticollision Report

Company:	EnCana Oil & Gas (USA) Inc	Local Co-ordinate Reference:	Well Benjamin Fee 28-9B
Project:	Mamm Creek	TVD Reference:	WELL @ 5965.0ft (Original Well Elev)
Reference Site:	K28NW Pad	MD Reference:	WELL @ 5965.0ft (Original Well Elev)
Site Error:	0.0ft	North Reference:	True
Reference Well:	Benjamin Fee 28-9B	Survey Calculation Method:	Minimum Curvature
Well Error:	0.0ft	Output errors are at	2.00 sigma
Reference Wellbore	DD	Database:	EDM 5000.1 US Multi Users DB
Reference Design:	Plan #2	Offset TVD Reference:	Offset Datum

Offset Design													Offset Site Error:	0.0 ft	
Survey Program: 100-MWD													Offset Well Error:		0.0 ft
K28NW Pad - Benjamin 28-11 Existing - Existing - Existing															
Reference		Offset		Semi Major Axis			Offset Wellbore Centre		Distance		Total	Separation	Warning		
Measured Depth (ft)	Vertical Depth (ft)	Measured Depth (ft)	Vertical Depth (ft)	Reference (ft)	Offset (ft)	Highside Toolface (°)	+N/-S (ft)	+E/-W (ft)	Between Centres (ft)	Between Ellipses (ft)	Uncertainty Axis	Factor			
0.0	0.0	0.0	0.0	0.0	0.0	-130.04	-97.3	-115.8	151.3						
100.0	100.0	99.3	99.3	0.1	0.1	-130.05	-97.5	-116.0	151.5	151.3	0.27	558.359	ES		
200.0	200.0	199.2	199.2	0.3	0.3	-130.13	-98.0	-116.3	152.1	151.4	0.62	245.212			
300.0	300.0	299.3	299.3	0.5	0.5	161.98	-98.9	-116.2	155.1	154.1	0.97	159.873			
400.0	399.6	399.3	399.3	0.7	0.7	162.20	-100.3	-115.4	162.9	161.5	1.32	123.107			
500.0	498.8	496.5	496.4	1.0	0.8	162.62	-102.5	-114.6	176.1	174.4	1.68	105.094			
600.0	597.1	592.9	592.9	1.4	1.0	163.35	-105.4	-114.5	195.3	193.2	2.03	96.214			
680.2	675.2	669.0	668.8	1.7	1.2	164.08	-107.9	-114.9	214.9	212.6	2.31	92.950			
700.0	694.3	687.6	687.4	1.8	1.2	164.30	-108.7	-115.1	220.2	217.8	2.38	92.391			
800.0	791.2	782.8	782.5	2.3	1.4	165.26	-112.5	-116.2	247.5	244.8	2.75	90.112			
900.0	888.0	877.4	877.0	2.7	1.5	166.03	-116.6	-117.6	275.3	272.2	3.11	88.607			
1,000.0	984.9	971.6	971.1	3.2	1.7	166.67	-120.9	-119.5	303.6	300.2	3.46	87.653			
1,100.0	1,081.8	1,066.5	1,065.9	3.7	1.9	167.24	-125.3	-121.8	332.4	328.6	3.82	87.021			
1,200.0	1,178.6	1,161.7	1,160.9	4.1	2.1	167.74	-129.8	-124.4	361.4	357.2	4.17	86.572			
1,300.0	1,275.5	1,257.0	1,256.1	4.6	2.3	168.19	-134.1	-127.1	390.5	386.0	4.53	86.247			
1,400.0	1,372.3	1,351.9	1,350.9	5.1	2.5	168.56	-138.6	-129.8	419.8	414.9	4.88	86.003			
1,500.0	1,469.2	1,448.0	1,446.8	5.6	2.6	168.88	-143.3	-132.7	449.2	443.9	5.24	85.783			
1,600.0	1,566.0	1,545.7	1,544.4	6.0	2.8	169.10	-148.2	-135.0	478.2	472.6	5.60	85.424			
1,700.0	1,662.9	1,643.3	1,641.9	6.5	3.0	169.24	-153.4	-136.8	506.8	500.9	5.96	85.012			
1,800.0	1,759.7	1,741.5	1,739.9	7.0	3.2	169.35	-158.5	-138.1	535.1	528.8	6.33	84.560			
1,900.0	1,856.6	1,839.1	1,837.4	7.5	3.4	169.44	-163.4	-139.1	563.0	556.3	6.69	84.096			
2,000.0	1,953.5	1,936.2	1,934.4	7.9	3.6	169.50	-168.4	-139.8	590.7	583.6	7.06	83.651			
2,100.0	2,050.3	2,034.3	2,032.3	8.4	3.8	169.54	-173.4	-140.1	618.2	610.7	7.43	83.173			
2,200.0	2,147.2	2,132.3	2,130.2	8.9	4.0	169.56	-178.4	-140.2	645.3	637.5	7.80	82.691			
2,300.0	2,244.0	2,230.8	2,228.5	9.4	4.2	169.57	-183.4	-140.0	672.2	664.1	8.18	82.199			
2,400.0	2,340.9	2,330.1	2,327.7	9.9	4.4	169.57	-188.3	-139.3	698.7	690.2	8.56	81.674			
2,500.0	2,437.7	2,428.1	2,425.6	10.3	4.6	169.56	-193.1	-138.4	725.0	716.0	8.93	81.180			
2,600.0	2,534.6	2,527.3	2,524.7	10.8	4.7	169.56	-197.6	-137.2	750.9	741.6	9.31	80.682			
2,700.0	2,631.4	2,624.6	2,621.9	11.3	4.9	169.56	-201.9	-136.0	776.6	766.9	9.68	80.230			
2,800.0	2,728.3	2,721.1	2,718.3	11.8	5.1	169.56	-206.3	-134.7	802.3	792.2	10.05	79.812			
2,900.0	2,825.2	2,817.4	2,814.5	12.2	5.3	169.56	-210.7	-133.3	828.0	817.6	10.43	79.421	SF		

CC - Min centre to center distance or covergent point, SF - min separation factor, ES - min ellipse separation

Cathedral Energy Services

Anticollision Report

Company:	EnCana Oil & Gas (USA) Inc	Local Co-ordinate Reference:	Well Benjamin Fee 28-9B
Project:	Mamm Creek	TVD Reference:	WELL @ 5965.0ft (Original Well Elev)
Reference Site:	K28NW Pad	MD Reference:	WELL @ 5965.0ft (Original Well Elev)
Site Error:	0.0ft	North Reference:	True
Reference Well:	Benjamin Fee 28-9B	Survey Calculation Method:	Minimum Curvature
Well Error:	0.0ft	Output errors are at	2.00 sigma
Reference Wellbore	DD	Database:	EDM 5000.1 US Multi Users DB
Reference Design:	Plan #2	Offset TVD Reference:	Offset Datum

Offset Design													Offset Site Error:	0.0 ft	
Survey Program: 0-MWD													Offset Well Error:		0.0 ft
Reference															
Offset				Semi Major Axis			Distance								
Measured Depth (ft)	Vertical Depth (ft)	Measured Depth (ft)	Vertical Depth (ft)	Reference (ft)	Offset (ft)	Highside Toolface (°)	Offset Wellbore Centre +N/-S (ft)	+E/-W (ft)	Between Centres (ft)	Between Ellipses (ft)	Total Uncertainty Axis	Separation Factor	Warning		
0.0	0.0	0.0	0.0	0.0	0.0	-162.20	-25.5	-8.2	26.8						
100.0	100.0	100.0	100.0	0.1	0.1	-162.20	-25.5	-8.2	26.8	26.5	0.27	98.351			
200.0	200.0	200.0	200.0	0.3	0.3	-162.20	-25.5	-8.2	26.8	26.2	0.62	43.097	CC, ES		
300.0	300.0	299.5	299.5	0.5	0.5	138.82	-25.1	-10.7	29.2	28.2	0.98	29.801			
400.0	399.6	397.6	397.2	0.7	0.7	156.95	-23.9	-18.3	39.5	38.2	1.36	29.166	SF		
500.0	498.8	492.7	491.6	1.0	1.0	171.16	-22.0	-30.3	61.0	59.3	1.71	35.559			
600.0	597.1	583.7	581.1	1.4	1.3	179.49	-19.6	-46.1	93.2	91.2	2.06	45.294			
680.2	675.2	653.0	648.8	1.7	1.6	-176.45	-17.2	-61.0	126.1	123.7	2.33	54.144			
700.0	694.3	669.6	664.9	1.8	1.7	-175.69	-16.6	-64.9	135.0	132.6	2.40	56.277			
800.0	791.2	751.3	743.6	2.3	2.1	-172.71	-13.3	-86.2	182.2	179.5	2.76	66.086			
900.0	888.0	829.2	817.9	2.7	2.6	-170.61	-9.6	-109.7	233.1	230.0	3.12	74.704			
1,000.0	984.9	900.0	884.4	3.2	3.0	-169.09	-5.9	-133.5	287.4	283.9	3.48	82.669			
1,100.0	1,081.8	976.4	955.2	3.7	3.6	-167.72	-1.4	-162.0	344.8	340.9	3.86	89.416			
1,200.0	1,178.6	1,054.2	1,026.7	4.1	4.2	-166.61	3.3	-192.4	403.7	399.5	4.24	95.247			
1,300.0	1,275.5	1,134.8	1,100.6	4.6	4.8	-165.76	8.2	-223.8	462.8	458.2	4.63	99.970			
1,400.0	1,372.3	1,215.3	1,174.6	5.1	5.4	-165.10	13.2	-255.3	521.9	516.9	5.02	103.950			
1,500.0	1,469.2	1,295.8	1,248.6	5.6	6.0	-164.57	18.1	-286.7	581.1	575.6	5.41	107.347			
1,600.0	1,566.0	1,376.3	1,322.5	6.0	6.6	-164.14	23.0	-318.2	640.2	634.4	5.81	110.279			
1,700.0	1,662.9	1,456.9	1,396.5	6.5	7.2	-163.78	27.9	-349.7	699.4	693.2	6.20	112.835			
1,800.0	1,759.7	1,537.4	1,470.5	7.0	7.8	-163.48	32.8	-381.1	758.6	752.0	6.59	115.084			
1,900.0	1,856.6	1,617.9	1,544.4	7.5	8.4	-163.22	37.8	-412.6	817.8	810.9	6.99	117.077			

Cathedral Energy Services

Anticollision Report

Company:	EnCana Oil & Gas (USA) Inc	Local Co-ordinate Reference:	Well Benjamin Fee 28-9B
Project:	Mamm Creek	TVD Reference:	WELL @ 5965.0ft (Original Well Elev)
Reference Site:	K28NW Pad	MD Reference:	WELL @ 5965.0ft (Original Well Elev)
Site Error:	0.0ft	North Reference:	True
Reference Well:	Benjamin Fee 28-9B	Survey Calculation Method:	Minimum Curvature
Well Error:	0.0ft	Output errors are at	2.00 sigma
Reference Wellbore	DD	Database:	EDM 5000.1 US Multi Users DB
Reference Design:	Plan #2	Offset TVD Reference:	Offset Datum

Offset Design													Offset Site Error:	0.0 ft	
Survey Program: 0-MWD													Offset Well Error:		0.0 ft
Reference															
Offset				Semi Major Axis			Distance								
Measured Depth (ft)	Vertical Depth (ft)	Measured Depth (ft)	Vertical Depth (ft)	Reference (ft)	Offset (ft)	Highside Toolface (°)	Offset Wellbore Centre +N/-S (ft)	+E/-W (ft)	Between Centres (ft)	Between Ellipses (ft)	Total Uncertainty Axis	Separation Factor	Warning		
0.0	0.0	0.0	0.0	0.0	0.0	-169.13	-42.6	-8.2	43.4						
100.0	100.0	100.0	100.0	0.1	0.1	-169.13	-42.6	-8.2	43.4	43.1	0.27	159.381			
200.0	200.0	200.0	200.0	0.3	0.3	-169.13	-42.6	-8.2	43.4	42.8	0.62	69.841	CC, ES		
300.0	300.0	300.0	300.0	0.5	0.5	125.74	-42.6	-8.2	44.9	43.9	0.98	45.990			
400.0	399.6	399.6	399.6	0.7	0.7	132.95	-42.6	-8.2	49.9	48.5	1.35	37.020			
500.0	498.8	498.8	498.8	1.0	0.8	141.97	-42.6	-8.2	59.6	57.8	1.73	34.493	SF		
600.0	597.1	597.1	597.1	1.4	1.0	150.34	-42.6	-8.2	74.8	72.7	2.10	35.706			
680.2	675.2	675.2	675.2	1.7	1.1	155.81	-42.6	-8.2	91.2	88.9	2.38	38.414			
700.0	694.3	694.3	694.3	1.8	1.2	157.01	-42.6	-8.2	95.8	93.3	2.44	39.196			
800.0	791.2	789.3	789.3	2.3	1.3	161.73	-42.6	-8.6	119.5	116.7	2.78	42.978			
900.0	888.0	880.2	880.1	2.7	1.5	165.70	-42.5	-12.6	146.8	143.7	3.10	47.403			
1,000.0	984.9	968.4	967.9	3.2	1.7	169.20	-42.4	-20.7	178.3	174.9	3.40	52.377			
1,100.0	1,081.8	1,053.8	1,052.5	3.7	1.9	172.21	-42.1	-32.3	214.0	210.3	3.71	57.653			
1,200.0	1,178.6	1,136.1	1,133.5	4.1	2.1	174.77	-41.8	-47.1	253.7	249.6	4.02	63.069			
1,300.0	1,275.5	1,215.3	1,210.7	4.6	2.4	176.95	-41.4	-64.6	297.2	292.8	4.34	68.526			
1,400.0	1,372.3	1,291.3	1,284.0	5.1	2.7	178.80	-41.0	-84.4	344.3	339.6	4.66	73.945			
1,500.0	1,469.2	1,363.9	1,353.4	5.6	3.1	-179.61	-40.6	-106.0	394.8	389.9	4.98	79.270			
1,600.0	1,566.0	1,433.4	1,418.9	6.0	3.5	-178.25	-40.1	-129.1	448.6	443.3	5.31	84.538			
1,700.0	1,662.9	1,500.0	1,480.9	6.5	3.9	-177.06	-39.6	-153.5	505.3	499.7	5.63	89.733			
1,800.0	1,759.7	1,562.6	1,538.3	7.0	4.4	-176.04	-39.1	-178.4	564.8	558.9	5.96	94.795			
1,900.0	1,856.6	1,626.6	1,596.2	7.5	4.9	-175.09	-38.5	-205.7	626.8	620.5	6.29	99.685			
2,000.0	1,953.5	1,703.9	1,665.7	7.9	5.5	-174.11	-37.8	-239.4	689.7	683.1	6.65	103.714			
2,100.0	2,050.3	1,781.1	1,735.3	8.4	6.1	-173.29	-37.1	-273.0	752.7	745.7	7.01	107.334			
2,200.0	2,147.2	1,858.4	1,804.8	8.9	6.7	-172.59	-36.4	-306.6	815.7	808.4	7.37	110.612			

CC - Min centre to center distance or convergent point, SF - min separation factor, ES - min ellipse separation

Cathedral Energy Services

Anticollision Report

Company:	EnCana Oil & Gas (USA) Inc	Local Co-ordinate Reference:	Well Benjamin Fee 28-9B
Project:	Mamm Creek	TVD Reference:	WELL @ 5965.0ft (Original Well Elev)
Reference Site:	K28NW Pad	MD Reference:	WELL @ 5965.0ft (Original Well Elev)
Site Error:	0.0ft	North Reference:	True
Reference Well:	Benjamin Fee 28-9B	Survey Calculation Method:	Minimum Curvature
Well Error:	0.0ft	Output errors are at	2.00 sigma
Reference Wellbore	DD	Database:	EDM 5000.1 US Multi Users DB
Reference Design:	Plan #2	Offset TVD Reference:	Offset Datum

Offset Design													Offset Site Error:	0.0 ft	
Survey Program: 0-MWD													Offset Well Error:		0.0 ft
Reference															
Offset				Semi Major Axis			Distance								
Measured Depth (ft)	Vertical Depth (ft)	Measured Depth (ft)	Vertical Depth (ft)	Reference (ft)	Offset (ft)	Highside Toolface (°)	Offset Wellbore Centre +N/-S (ft)	+E/-W (ft)	Between Centres (ft)	Between Ellipses (ft)	Total Uncertainty Axis	Separation Factor	Warning		
0.0	0.0	0.0	0.0	0.0	0.0	-81.78	16.8	-116.0	117.2						
100.0	100.0	100.0	100.0	0.1	0.1	-81.78	16.8	-116.0	117.2	116.9	0.27	430.420			
200.0	200.0	200.0	200.0	0.3	0.3	-81.78	16.8	-116.0	117.2	116.6	0.62	188.611	CC, ES		
300.0	300.0	294.2	294.2	0.5	0.5	-150.51	16.4	-118.3	121.8	120.9	0.96	126.597			
400.0	399.6	387.0	386.7	0.7	0.7	-152.64	15.4	-125.0	135.8	134.5	1.31	103.849			
500.0	498.8	477.1	476.1	1.0	0.9	-155.28	13.8	-135.8	159.3	157.7	1.65	96.283	SF		
600.0	597.1	563.2	561.0	1.4	1.2	-157.81	11.7	-150.1	192.2	190.2	2.00	96.291			
680.2	675.2	628.8	625.2	1.7	1.5	-159.52	9.8	-163.4	225.0	222.8	2.26	99.516			
700.0	694.3	644.5	640.5	1.8	1.6	-159.99	9.2	-166.9	233.9	231.6	2.33	100.532			
800.0	791.2	721.9	715.4	2.3	1.9	-161.94	6.4	-186.1	281.1	278.5	2.65	106.074			
900.0	888.0	800.0	790.2	2.7	2.4	-163.40	3.1	-208.5	332.1	329.1	2.97	111.819			
1,000.0	984.9	866.3	852.9	3.2	2.8	-164.36	-0.1	-229.8	386.3	383.0	3.27	118.142			
1,100.0	1,081.8	933.5	915.6	3.7	3.3	-165.13	-3.6	-253.6	443.6	440.0	3.57	124.326			
1,200.0	1,178.6	1,014.3	990.5	4.1	3.8	-165.86	-8.0	-283.6	502.4	498.5	3.88	129.367			
1,300.0	1,275.5	1,095.0	1,065.3	4.6	4.4	-166.43	-12.4	-313.5	561.2	557.0	4.20	133.665			
1,400.0	1,372.3	1,175.8	1,140.2	5.1	5.0	-166.90	-16.8	-343.4	620.1	615.5	4.51	137.360			
1,500.0	1,469.2	1,256.5	1,215.1	5.6	5.5	-167.29	-21.2	-373.3	678.9	674.1	4.83	140.569			
1,600.0	1,566.0	1,337.3	1,290.0	6.0	6.1	-167.61	-25.7	-403.2	737.8	732.7	5.15	143.379			
1,700.0	1,662.9	1,418.0	1,364.8	6.5	6.7	-167.89	-30.1	-433.2	796.7	791.3	5.46	145.857			

Cathedral Energy Services

Anticollision Report

Company:	EnCana Oil & Gas (USA) Inc	Local Co-ordinate Reference:	Well Benjamin Fee 28-9B
Project:	Mamm Creek	TVD Reference:	WELL @ 5965.0ft (Original Well Elev)
Reference Site:	K28NW Pad	MD Reference:	WELL @ 5965.0ft (Original Well Elev)
Site Error:	0.0ft	North Reference:	True
Reference Well:	Benjamin Fee 28-9B	Survey Calculation Method:	Minimum Curvature
Well Error:	0.0ft	Output errors are at	2.00 sigma
Reference Wellbore	DD	Database:	EDM 5000.1 US Multi Users DB
Reference Design:	Plan #2	Offset TVD Reference:	Offset Datum

Offset Design													Offset Site Error:	0.0 ft	
Survey Program: 0-MWD													Offset Well Error:		0.0 ft
Reference															
Offset				Semi Major Axis			Distance								
Measured Depth (ft)	Vertical Depth (ft)	Measured Depth (ft)	Vertical Depth (ft)	Reference (ft)	Offset (ft)	Highside Toolface (°)	Offset Wellbore Centre +N/-S (ft)	+E/-W (ft)	Between Centres (ft)	Between Ellipses (ft)	Total Uncertainty Axis	Separation Factor	Warning		
0.0	0.0	0.0	0.0	0.0	0.0	-85.57	8.4	-108.1	108.4						
100.0	100.0	100.0	100.0	0.1	0.1	-85.57	8.4	-108.1	108.4	108.1	0.27	398.167			
200.0	200.0	200.0	200.0	0.3	0.3	-85.57	8.4	-108.1	108.4	107.8	0.62	174.478	CC, ES		
300.0	300.0	294.7	294.7	0.5	0.5	-154.40	7.7	-110.3	113.1	112.1	0.96	117.414			
400.0	399.6	388.0	387.7	0.7	0.7	-156.76	5.7	-116.9	127.2	125.9	1.31	97.222			
500.0	498.8	478.5	477.5	1.0	0.9	-159.64	2.5	-127.5	150.9	149.3	1.65	91.362	SF		
600.0	597.1	565.0	562.8	1.4	1.2	-162.35	-1.6	-141.4	184.1	182.1	1.99	92.737			
680.2	675.2	630.8	627.2	1.7	1.5	-164.18	-5.6	-154.4	217.3	215.1	2.24	96.965			
700.0	694.3	646.5	642.5	1.8	1.6	-164.65	-6.6	-157.8	226.3	224.0	2.30	98.183			
800.0	791.2	724.0	717.4	2.3	2.0	-166.61	-12.2	-176.5	273.9	271.3	2.62	104.648			
900.0	888.0	800.0	790.2	2.7	2.4	-168.08	-18.5	-197.6	325.2	322.3	2.92	111.287			
1,000.0	984.9	868.5	855.0	3.2	2.8	-169.13	-25.0	-219.0	379.8	376.6	3.21	118.175			
1,100.0	1,081.8	935.7	917.6	3.7	3.3	-169.96	-31.9	-242.1	437.5	434.0	3.50	125.017			
1,200.0	1,178.6	1,009.8	986.0	4.1	3.8	-170.70	-40.1	-269.5	497.5	493.7	3.79	131.171			
1,300.0	1,275.5	1,089.5	1,059.5	4.6	4.4	-171.33	-49.0	-299.1	557.7	553.6	4.09	136.270			
1,400.0	1,372.3	1,169.2	1,132.9	5.1	5.0	-171.84	-57.9	-328.6	618.0	613.6	4.39	140.685			
1,500.0	1,469.2	1,248.9	1,206.4	5.6	5.5	-172.26	-66.8	-358.2	678.3	673.6	4.69	144.552			
1,600.0	1,566.0	1,328.5	1,279.8	6.0	6.1	-172.61	-75.7	-387.8	738.6	733.6	4.99	147.962			
1,700.0	1,662.9	1,408.2	1,353.3	6.5	6.7	-172.91	-84.6	-417.3	798.9	793.6	5.29	150.989			

Cathedral Energy Services

Anticollision Report

Company:	EnCana Oil & Gas (USA) Inc	Local Co-ordinate Reference:	Well Benjamin Fee 28-9B
Project:	Mamm Creek	TVD Reference:	WELL @ 5965.0ft (Original Well Elev)
Reference Site:	K28NW Pad	MD Reference:	WELL @ 5965.0ft (Original Well Elev)
Site Error:	0.0ft	North Reference:	True
Reference Well:	Benjamin Fee 28-9B	Survey Calculation Method:	Minimum Curvature
Well Error:	0.0ft	Output errors are at	2.00 sigma
Reference Wellbore	DD	Database:	EDM 5000.1 US Multi Users DB
Reference Design:	Plan #2	Offset TVD Reference:	Offset Datum

Offset Design													Offset Site Error:	0.0 ft		
Survey Program: 0-MWD													K28NW Pad - Benjamin Federal 28-13B2 - DD - Plan #2		Offset Well Error:	0.0 ft
Reference		Offset		Semi Major Axis			Distance				Total Uncertainty Axis	Separation Factor	Warning			
Measured Depth (ft)	Vertical Depth (ft)	Measured Depth (ft)	Vertical Depth (ft)	Reference (ft)	Offset (ft)	Highside Toolface (°)	Offset Wellbore Centre +N/-S (ft)	+E/-W (ft)	Between Centres (ft)	Between Ellipses (ft)						
0.0	0.0	0.0	0.0	0.0	0.0	-90.00	0.0	-116.0	116.0							
100.0	100.0	100.0	100.0	0.1	0.1	-90.00	0.0	-116.0	116.0	115.7	0.27	425.998				
200.0	200.0	200.0	200.0	0.3	0.3	-90.00	0.0	-116.0	116.0	115.4	0.62	186.674 CC, ES				
300.0	300.0	294.5	294.5	0.5	0.5	-158.74	-0.9	-118.1	120.7	119.7	0.96	125.401				
400.0	399.6	387.5	387.2	0.7	0.7	-160.89	-3.7	-124.4	134.9	133.6	1.31	103.259				
500.0	498.8	477.8	476.8	1.0	0.9	-163.56	-8.1	-134.4	158.7	157.0	1.65	96.307 SF				
600.0	597.1	564.1	561.9	1.4	1.2	-166.12	-14.0	-147.6	191.9	189.9	1.98	97.037				
680.2	675.2	629.7	626.1	1.7	1.5	-167.88	-19.4	-160.0	225.1	222.9	2.23	100.971				
700.0	694.3	645.4	641.4	1.8	1.6	-168.33	-20.9	-163.3	234.1	231.8	2.29	102.103				
800.0	791.2	722.7	716.2	2.3	1.9	-170.23	-28.7	-181.0	281.7	279.1	2.60	108.216				
900.0	888.0	800.0	790.2	2.7	2.4	-171.73	-37.7	-201.5	333.0	330.1	2.91	114.492				
1,000.0	984.9	866.9	853.5	3.2	2.8	-172.79	-46.5	-221.5	387.5	384.3	3.20	121.209				
1,100.0	1,081.8	933.9	916.0	3.7	3.3	-173.68	-56.2	-243.4	445.1	441.6	3.48	127.848				
1,200.0	1,178.6	998.8	975.7	4.1	3.7	-174.41	-66.4	-266.6	505.5	501.8	3.76	134.467				
1,300.0	1,275.5	1,077.4	1,047.7	4.6	4.3	-175.14	-79.2	-295.6	567.1	563.1	4.06	139.772				
1,400.0	1,372.3	1,156.0	1,119.6	5.1	4.9	-175.72	-92.0	-324.7	628.8	624.4	4.35	144.409				
1,500.0	1,469.2	1,234.6	1,191.5	5.6	5.5	-176.20	-104.8	-353.7	690.5	685.8	4.65	148.484				
1,600.0	1,566.0	1,313.2	1,263.4	6.0	6.1	-176.61	-117.6	-382.7	752.2	747.2	4.95	152.087				
1,700.0	1,662.9	1,391.8	1,335.3	6.5	6.7	-176.95	-130.4	-411.7	813.9	808.7	5.24	155.286				

Cathedral Energy Services

Anticollision Report

Company:	EnCana Oil & Gas (USA) Inc	Local Co-ordinate Reference:	Well Benjamin Fee 28-9B
Project:	Mamm Creek	TVD Reference:	WELL @ 5965.0ft (Original Well Elev)
Reference Site:	K28NW Pad	MD Reference:	WELL @ 5965.0ft (Original Well Elev)
Site Error:	0.0ft	North Reference:	True
Reference Well:	Benjamin Fee 28-9B	Survey Calculation Method:	Minimum Curvature
Well Error:	0.0ft	Output errors are at	2.00 sigma
Reference Wellbore	DD	Database:	EDM 5000.1 US Multi Users DB
Reference Design:	Plan #2	Offset TVD Reference:	Offset Datum

Offset Design													Offset Site Error:	0.0 ft	
Survey Program: 0-MWD													Offset Well Error:		0.0 ft
Reference													Warning		
Offset				Semi Major Axis			Distance				Total		Separation		
Measured Depth (ft)	Vertical Depth (ft)	Measured Depth (ft)	Vertical Depth (ft)	Reference (ft)	Offset (ft)	Highside Toolface (°)	Offset Wellbore Centre +N/-S (ft)	+E/-W (ft)	Between Centres (ft)	Between Ellipses (ft)	Uncertainty Axis	Factor			
0.0	0.0	0.0	0.0	0.0	0.0	-94.63	-8.7	-108.0	108.3						
100.0	100.0	100.0	100.0	0.1	0.1	-94.63	-8.7	-108.0	108.3	108.1	0.27	397.928			
200.0	200.0	200.0	200.0	0.3	0.3	-94.63	-8.7	-108.0	108.3	107.7	0.62	174.373	CC, ES		
300.0	300.0	294.9	294.9	0.5	0.5	-163.40	-10.0	-110.0	113.1	112.1	0.96	117.414			
400.0	399.6	388.4	388.1	0.7	0.7	-165.62	-13.6	-115.9	127.4	126.0	1.31	97.449			
500.0	498.8	479.1	478.1	1.0	0.9	-168.34	-19.3	-125.4	151.3	149.6	1.65	91.835	SF		
600.0	597.1	565.8	563.5	1.4	1.2	-170.92	-26.9	-137.8	184.6	182.7	1.98	93.477			
680.2	675.2	631.8	628.1	1.7	1.5	-172.69	-34.0	-149.5	218.0	215.7	2.23	97.961			
700.0	694.3	647.5	643.4	1.8	1.6	-173.11	-35.8	-152.6	227.0	224.7	2.29	99.181			
800.0	791.2	725.2	718.6	2.3	2.0	-174.93	-46.0	-169.3	274.6	272.0	2.60	105.605			
900.0	888.0	800.0	790.2	2.7	2.4	-176.35	-57.3	-187.9	325.9	323.0	2.90	112.200			
1,000.0	984.9	870.1	856.4	3.2	2.8	-177.46	-69.2	-207.4	380.4	377.2	3.20	118.755			
1,100.0	1,081.8	937.4	919.2	3.7	3.3	-178.37	-81.8	-228.1	438.0	434.5	3.50	125.324			
1,200.0	1,178.6	1,000.0	976.8	4.1	3.7	-179.10	-94.5	-249.1	498.4	494.7	3.78	132.014			
1,300.0	1,275.5	1,064.3	1,035.1	4.6	4.3	-179.76	-108.6	-272.3	561.4	557.4	4.06	138.273			
1,400.0	1,372.3	1,141.0	1,104.2	5.1	4.9	179.59	-125.8	-300.6	625.4	621.0	4.36	143.282			
1,500.0	1,469.2	1,217.7	1,173.4	5.6	5.5	179.05	-143.1	-329.0	689.4	684.7	4.67	147.712			
1,600.0	1,566.0	1,294.4	1,242.5	6.0	6.1	178.61	-160.3	-357.4	753.5	748.5	4.97	151.609			
1,700.0	1,662.9	1,371.0	1,311.6	6.5	6.7	178.23	-177.5	-385.7	817.5	812.2	5.27	155.051			

Cathedral Energy Services

Anticollision Report

Company:	EnCana Oil & Gas (USA) Inc	Local Co-ordinate Reference:	Well Benjamin Fee 28-9B
Project:	Mamm Creek	TVD Reference:	WELL @ 5965.0ft (Original Well Elev)
Reference Site:	K28NW Pad	MD Reference:	WELL @ 5965.0ft (Original Well Elev)
Site Error:	0.0ft	North Reference:	True
Reference Well:	Benjamin Fee 28-9B	Survey Calculation Method:	Minimum Curvature
Well Error:	0.0ft	Output errors are at	2.00 sigma
Reference Wellbore	DD	Database:	EDM 5000.1 US Multi Users DB
Reference Design:	Plan #2	Offset TVD Reference:	Offset Datum

Offset Design													Offset Site Error:	0.0 ft	
Survey Program: 0-MWD													Offset Well Error:		0.0 ft
Reference															
Offset				Semi Major Axis			Distance								
Measured Depth (ft)	Vertical Depth (ft)	Measured Depth (ft)	Vertical Depth (ft)	Reference (ft)	Offset (ft)	Highside Toolface (°)	Offset Wellbore Centre +N/-S (ft)	+E/-W (ft)	Between Centres (ft)	Between Ellipses (ft)	Total Uncertainty Axis	Separation Factor	Warning		
0.0	0.0	0.0	0.0	0.0	0.0	-98.40	-17.1	-116.0	117.2						
100.0	100.0	100.0	100.0	0.1	0.1	-98.40	-17.1	-116.0	117.2	117.0	0.27	430.613			
200.0	200.0	200.0	200.0	0.3	0.3	-98.40	-17.1	-116.0	117.2	116.6	0.62	188.696 CC, ES			
300.0	300.0	294.7	294.6	0.5	0.5	-167.07	-18.5	-117.9	122.0	121.0	0.96	126.710			
400.0	399.6	387.9	387.6	0.7	0.7	-169.07	-22.7	-123.3	136.2	134.9	1.31	104.276			
500.0	498.8	478.4	477.4	1.0	0.9	-171.58	-29.4	-132.1	160.0	158.3	1.65	97.132 SF			
600.0	597.1	564.9	562.7	1.4	1.2	-174.01	-38.2	-143.6	193.2	191.2	1.98	97.683			
680.2	675.2	630.9	627.2	1.7	1.5	-175.73	-46.4	-154.5	226.3	224.1	2.23	101.476			
700.0	694.3	646.6	642.6	1.8	1.6	-176.13	-48.6	-157.3	235.3	233.0	2.29	102.513			
800.0	791.2	724.3	717.7	2.3	1.9	-177.90	-60.5	-172.9	282.6	280.0	2.61	108.104			
900.0	888.0	800.0	790.2	2.7	2.4	-179.34	-73.8	-190.3	333.5	330.6	2.93	113.871			
1,000.0	984.9	869.3	855.7	3.2	2.8	179.52	-87.5	-208.3	387.7	384.5	3.24	119.742			
1,100.0	1,081.8	936.7	918.6	3.7	3.3	178.56	-102.2	-227.6	444.9	441.4	3.54	125.623			
1,200.0	1,178.6	1,000.0	976.8	4.1	3.7	177.77	-117.2	-247.3	505.0	501.1	3.84	131.648			
1,300.0	1,275.5	1,061.8	1,032.9	4.6	4.2	177.07	-133.0	-268.1	567.6	563.5	4.13	137.312			
1,400.0	1,372.3	1,120.6	1,085.4	5.1	4.7	176.46	-149.0	-289.1	632.6	628.2	4.42	143.112			
1,500.0	1,469.2	1,195.4	1,151.7	5.6	5.4	175.80	-169.9	-316.6	698.7	694.0	4.74	147.460			
1,600.0	1,566.0	1,270.2	1,218.1	6.0	6.0	175.26	-190.9	-344.1	764.9	759.8	5.06	151.267			

Cathedral Energy Services

Anticollision Report

Company:	EnCana Oil & Gas (USA) Inc	Local Co-ordinate Reference:	Well Benjamin Fee 28-9B
Project:	Mamm Creek	TVD Reference:	WELL @ 5965.0ft (Original Well Elev)
Reference Site:	K28NW Pad	MD Reference:	WELL @ 5965.0ft (Original Well Elev)
Site Error:	0.0ft	North Reference:	True
Reference Well:	Benjamin Fee 28-9B	Survey Calculation Method:	Minimum Curvature
Well Error:	0.0ft	Output errors are at	2.00 sigma
Reference Wellbore	DD	Database:	EDM 5000.1 US Multi Users DB
Reference Design:	Plan #2	Offset TVD Reference:	Offset Datum

Offset Design													Offset Site Error:	0.0 ft	
Survey Program: 0-MWD													Offset Well Error:		0.0 ft
Reference															
Offset				Semi Major Axis			Distance								
Measured Depth (ft)	Vertical Depth (ft)	Measured Depth (ft)	Vertical Depth (ft)	Reference (ft)	Offset (ft)	Highside Toolface (°)	Offset Wellbore Centre +N/-S (ft)	+E/-W (ft)	Between Centres (ft)	Between Ellipses (ft)	Total Uncertainty Axis	Separation Factor	Warning		
0.0	0.0	0.0	0.0	0.0	0.0	-172.20	-59.7	-8.2	60.3						
100.0	100.0	100.0	100.0	0.1	0.1	-172.20	-59.7	-8.2	60.3	60.0	0.27	221.446			
200.0	200.0	200.0	200.0	0.3	0.3	-172.20	-59.7	-8.2	60.3	59.7	0.62	97.038	CC, ES		
300.0	300.0	296.1	296.0	0.5	0.5	121.56	-63.3	-8.5	65.3	64.4	0.97	67.383			
400.0	399.6	393.0	392.6	0.7	0.7	128.33	-69.8	-12.6	77.3	76.0	1.34	57.557			
500.0	498.8	488.6	487.6	1.0	0.9	137.22	-77.5	-20.7	96.9	95.1	1.73	56.072	SF		
600.0	597.1	584.1	582.3	1.4	1.2	144.62	-85.4	-29.4	122.8	120.7	2.11	58.274			
680.2	675.2	659.4	657.1	1.7	1.4	149.23	-91.7	-36.4	147.9	145.4	2.40	61.509			
700.0	694.3	677.9	675.4	1.8	1.4	150.30	-93.2	-38.1	154.5	152.0	2.48	62.420			
800.0	791.2	771.1	767.8	2.3	1.7	154.57	-101.0	-46.6	188.7	185.8	2.83	66.654			
900.0	888.0	864.3	860.3	2.7	1.9	157.53	-108.8	-55.2	223.5	220.3	3.18	70.278			
1,000.0	984.9	957.5	952.8	3.2	2.2	159.69	-116.5	-63.8	258.7	255.1	3.53	73.355			
1,100.0	1,081.8	1,050.7	1,045.3	3.7	2.5	161.34	-124.3	-72.4	294.1	290.3	3.87	75.975			
1,200.0	1,178.6	1,143.9	1,137.8	4.1	2.7	162.64	-132.1	-80.9	329.7	325.5	4.22	78.221			
1,300.0	1,275.5	1,237.1	1,230.3	4.6	3.0	163.68	-139.8	-89.5	365.5	360.9	4.56	80.160			
1,400.0	1,372.3	1,330.3	1,322.8	5.1	3.2	164.54	-147.6	-98.1	401.3	396.4	4.90	81.848			
1,500.0	1,469.2	1,423.5	1,415.3	5.6	3.5	165.26	-155.3	-106.6	437.2	431.9	5.25	83.327			
1,600.0	1,566.0	1,516.7	1,507.7	6.0	3.7	165.87	-163.1	-115.2	473.1	467.5	5.59	84.634			
1,700.0	1,662.9	1,610.0	1,600.2	6.5	4.0	166.39	-170.9	-123.8	509.1	503.2	5.93	85.796			
1,800.0	1,759.7	1,703.2	1,692.7	7.0	4.3	166.85	-178.6	-132.3	545.1	538.9	6.28	86.834			
1,900.0	1,856.6	1,796.4	1,785.2	7.5	4.5	167.24	-186.4	-140.9	581.2	574.6	6.62	87.767			
2,000.0	1,953.5	1,889.6	1,877.7	7.9	4.8	167.60	-194.2	-149.5	617.2	610.3	6.97	88.611			
2,100.0	2,050.3	1,982.8	1,970.2	8.4	5.0	167.91	-201.9	-158.0	653.3	646.0	7.31	89.376			
2,200.0	2,147.2	2,076.0	2,062.7	8.9	5.3	168.19	-209.7	-166.6	689.4	681.8	7.65	90.074			
2,300.0	2,244.0	2,169.2	2,155.2	9.4	5.6	168.44	-217.4	-175.2	725.5	717.5	8.00	90.712			
2,400.0	2,340.9	2,262.4	2,247.7	9.9	5.8	168.67	-225.2	-183.8	761.6	753.3	8.34	91.299			
2,500.0	2,437.7	2,355.6	2,340.1	10.3	6.1	168.88	-233.0	-192.3	797.8	789.1	8.69	91.839			

CC - Min centre to center distance or convergent point, SF - min separation factor, ES - min ellipse separation

Cathedral Energy Services

Anticollision Report

Company:	EnCana Oil & Gas (USA) Inc	Local Co-ordinate Reference:	Well Benjamin Fee 28-9B
Project:	Mamm Creek	TVD Reference:	WELL @ 5965.0ft (Original Well Elev)
Reference Site:	K28NW Pad	MD Reference:	WELL @ 5965.0ft (Original Well Elev)
Site Error:	0.0ft	North Reference:	True
Reference Well:	Benjamin Fee 28-9B	Survey Calculation Method:	Minimum Curvature
Well Error:	0.0ft	Output errors are at	2.00 sigma
Reference Wellbore	DD	Database:	EDM 5000.1 US Multi Users DB
Reference Design:	Plan #2	Offset TVD Reference:	Offset Datum

Offset Design													Offset Site Error:	0.0 ft	
Survey Program: 0-MWD													Offset Well Error:		0.0 ft
Reference															
Offset				Semi Major Axis			Distance								
Measured Depth (ft)	Vertical Depth (ft)	Measured Depth (ft)	Vertical Depth (ft)	Reference (ft)	Offset (ft)	Highside Toolface (°)	Offset Wellbore Centre +N/-S (ft)	+E/-W (ft)	Between Centres (ft)	Between Ellipses (ft)	Total Uncertainty Axis	Separation Factor	Warning		
0.0	0.0	0.0	0.0	0.0	0.0	-113.73	-51.0	-116.0	126.7						
100.0	100.0	100.0	100.0	0.1	0.1	-113.73	-51.0	-116.0	126.7	126.4	0.27	465.352			
200.0	200.0	200.0	200.0	0.3	0.3	-113.73	-51.0	-116.0	126.7	126.1	0.62	203.918	CC, ES		
300.0	300.0	294.9	294.9	0.5	0.5	177.74	-53.1	-117.1	131.2	130.3	0.96	136.149			
400.0	399.6	388.5	388.2	0.7	0.7	176.09	-59.3	-120.2	144.9	143.6	1.31	110.269			
500.0	498.8	479.7	478.7	1.0	0.9	173.94	-69.2	-125.2	167.7	166.0	1.67	100.267			
600.0	597.1	572.1	569.9	1.4	1.2	171.78	-82.4	-131.9	198.6	196.6	2.03	97.708			
680.2	675.2	646.9	643.7	1.7	1.5	170.50	-93.3	-137.4	227.3	225.0	2.32	97.826			
700.0	694.3	665.2	661.8	1.8	1.5	170.28	-95.9	-138.7	234.8	232.4	2.40	97.868			
800.0	791.2	757.7	753.1	2.3	1.8	169.36	-109.4	-145.5	272.6	269.8	2.78	97.963			
900.0	888.0	850.2	844.3	2.7	2.1	168.66	-122.8	-152.3	310.4	307.3	3.17	97.940			
1,000.0	984.9	942.7	935.6	3.2	2.4	168.11	-136.3	-159.1	348.3	344.7	3.56	97.856			
1,100.0	1,081.8	1,035.2	1,026.9	3.7	2.7	167.68	-149.7	-165.9	386.2	382.2	3.95	97.744			
1,200.0	1,178.6	1,127.8	1,118.1	4.1	3.0	167.31	-163.1	-172.7	424.1	419.7	4.34	97.618			
1,300.0	1,275.5	1,220.3	1,209.4	4.6	3.3	167.01	-176.6	-179.5	462.0	457.3	4.74	97.490			
1,400.0	1,372.3	1,312.8	1,300.7	5.1	3.6	166.76	-190.0	-186.3	499.9	494.8	5.13	97.363			
1,500.0	1,469.2	1,405.3	1,392.0	5.6	4.0	166.54	-203.5	-193.1	537.9	532.3	5.53	97.242			
1,600.0	1,566.0	1,497.8	1,483.2	6.0	4.3	166.35	-216.9	-199.9	575.8	569.9	5.93	97.126			
1,700.0	1,662.9	1,590.3	1,574.5	6.5	4.6	166.18	-230.4	-206.7	613.7	607.4	6.33	97.016			
1,800.0	1,759.7	1,682.8	1,665.8	7.0	4.9	166.03	-243.8	-213.5	651.7	645.0	6.72	96.913			
1,900.0	1,856.6	1,775.3	1,757.1	7.5	5.2	165.90	-257.2	-220.3	689.6	682.5	7.12	96.817			
2,000.0	1,953.5	1,867.8	1,848.3	7.9	5.5	165.78	-270.7	-227.1	727.6	720.1	7.52	96.727			
2,100.0	2,050.3	1,960.3	1,939.6	8.4	5.8	165.68	-284.1	-233.9	765.5	757.6	7.92	96.642			
2,200.0	2,147.2	2,052.8	2,030.9	8.9	6.1	165.58	-297.6	-240.8	803.5	795.2	8.32	96.563	SF		

CC - Min centre to center distance or convergent point, SF - min separation factor, ES - min ellipse separation

Cathedral Energy Services

Anticollision Report

Company:	EnCana Oil & Gas (USA) Inc	Local Co-ordinate Reference:	Well Benjamin Fee 28-9B
Project:	Mamm Creek	TVD Reference:	WELL @ 5965.0ft (Original Well Elev)
Reference Site:	K28NW Pad	MD Reference:	WELL @ 5965.0ft (Original Well Elev)
Site Error:	0.0ft	North Reference:	True
Reference Well:	Benjamin Fee 28-9B	Survey Calculation Method:	Minimum Curvature
Well Error:	0.0ft	Output errors are at	2.00 sigma
Reference Wellbore	DD	Database:	EDM 5000.1 US Multi Users DB
Reference Design:	Plan #2	Offset TVD Reference:	Offset Datum

Offset Design													Offset Site Error:	0.0 ft	
Survey Program: 0-MWD													Offset Well Error:		0.0 ft
Reference															
Offset				Semi Major Axis			Distance								
Measured Depth (ft)	Vertical Depth (ft)	Measured Depth (ft)	Vertical Depth (ft)	Reference (ft)	Offset (ft)	Highside Toolface (°)	Offset Wellbore Centre +N/-S (ft)	+E/-W (ft)	Between Centres (ft)	Between Ellipses (ft)	Total Uncertainty Axis	Separation Factor	Warning		
0.0	0.0	0.0	0.0	0.0	0.0	-111.54	-42.6	-108.0	116.1						
100.0	100.0	100.0	100.0	0.1	0.1	-111.54	-42.6	-108.0	116.1	115.8	0.27	426.398			
200.0	200.0	200.0	200.0	0.3	0.3	-111.54	-42.6	-108.0	116.1	115.5	0.62	186.849	CC, ES		
300.0	300.0	295.9	295.9	0.5	0.5	179.69	-44.9	-108.8	120.4	119.4	0.97	124.509			
400.0	399.6	390.6	390.3	0.7	0.7	177.43	-51.5	-111.3	133.4	132.1	1.32	100.693			
500.0	498.8	482.8	481.8	1.0	0.9	174.50	-62.3	-115.2	155.2	153.5	1.70	91.514			
600.0	597.1	571.6	569.3	1.4	1.3	171.56	-76.5	-120.4	185.9	183.8	2.08	89.447	SF		
680.2	675.2	641.9	638.0	1.7	1.5	169.38	-90.3	-125.4	216.5	214.2	2.38	90.794			
700.0	694.3	659.9	655.6	1.8	1.6	168.94	-93.9	-126.7	224.6	222.1	2.47	91.037			
800.0	791.2	750.9	744.4	2.3	2.0	167.14	-112.3	-133.5	265.5	262.7	2.89	91.979			
900.0	888.0	841.8	833.2	2.7	2.3	165.83	-130.8	-140.2	306.6	303.3	3.31	92.562			
1,000.0	984.9	932.8	922.1	3.2	2.7	164.82	-149.2	-146.9	347.8	344.1	3.74	92.920			
1,100.0	1,081.8	1,023.8	1,010.9	3.7	3.1	164.02	-167.7	-153.7	389.1	384.9	4.18	93.141			
1,200.0	1,178.6	1,114.8	1,099.7	4.1	3.4	163.38	-186.1	-160.4	430.4	425.8	4.61	93.276			
1,300.0	1,275.5	1,205.7	1,188.6	4.6	3.8	162.85	-204.5	-167.1	471.8	466.7	5.05	93.356			
1,400.0	1,372.3	1,296.7	1,277.4	5.1	4.2	162.41	-223.0	-173.9	513.1	507.6	5.49	93.400			
1,500.0	1,469.2	1,387.7	1,366.2	5.6	4.6	162.03	-241.4	-180.6	554.5	548.6	5.94	93.420			
1,600.0	1,566.0	1,478.6	1,455.0	6.0	4.9	161.70	-259.9	-187.3	596.0	589.6	6.38	93.424			
1,700.0	1,662.9	1,569.6	1,543.9	6.5	5.3	161.42	-278.3	-194.1	637.4	630.6	6.82	93.419			
1,800.0	1,759.7	1,660.6	1,632.7	7.0	5.7	161.17	-296.7	-200.8	678.8	671.6	7.27	93.406			
1,900.0	1,856.6	1,751.5	1,721.5	7.5	6.1	160.95	-315.2	-207.5	720.3	712.6	7.71	93.389			
2,000.0	1,953.5	1,842.5	1,810.3	7.9	6.4	160.75	-333.6	-214.3	761.8	753.6	8.16	93.369			
2,100.0	2,050.3	1,933.5	1,899.2	8.4	6.8	160.58	-352.1	-221.0	803.2	794.6	8.60	93.347			

CC - Min centre to center distance or convergent point, SF - min separation factor, ES - min ellipse separation

Cathedral Energy Services

Anticollision Report

Company:	EnCana Oil & Gas (USA) Inc	Local Co-ordinate Reference:	Well Benjamin Fee 28-9B
Project:	Mamm Creek	TVD Reference:	WELL @ 5965.0ft (Original Well Elev)
Reference Site:	K28NW Pad	MD Reference:	WELL @ 5965.0ft (Original Well Elev)
Site Error:	0.0ft	North Reference:	True
Reference Well:	Benjamin Fee 28-9B	Survey Calculation Method:	Minimum Curvature
Well Error:	0.0ft	Output errors are at	2.00 sigma
Reference Wellbore	DD	Database:	EDM 5000.1 US Multi Users DB
Reference Design:	Plan #2	Offset TVD Reference:	Offset Datum

Offset Design													Offset Site Error:	0.0 ft		
Survey Program: 0-MWD													K28NW Pad - Benjamin Federal 28-16C - DD - Plan #2		Offset Well Error:	0.0 ft
Reference		Offset		Semi Major Axis			Distance				Total Uncertainty Axis	Separation Factor	Warning			
Measured Depth (ft)	Vertical Depth (ft)	Measured Depth (ft)	Vertical Depth (ft)	Reference (ft)	Offset (ft)	Highside Toolface (°)	Offset Wellbore Centre +N/-S (ft)	+E/-W (ft)	Between Centres (ft)	Between Ellipses (ft)						
0.0	0.0	0.0	0.0	0.0	0.0	180.00	-51.0	0.0	51.0							
100.0	100.0	100.0	100.0	0.1	0.1	180.00	-51.0	0.0	51.0	50.7	0.27	187.290				
200.0	200.0	200.0	200.0	0.3	0.3	180.00	-51.0	0.0	51.0	50.4	0.62	82.071 CC, ES				
300.0	300.0	298.1	298.1	0.5	0.5	112.59	-52.7	1.9	53.7	52.7	0.98	54.879				
400.0	399.6	395.8	395.5	0.7	0.7	113.77	-57.8	7.4	61.9	60.5	1.39	44.604				
500.0	498.8	492.7	491.5	1.0	1.0	115.11	-66.2	16.4	75.6	73.7	1.89	40.072				
600.0	597.1	588.2	585.5	1.4	1.3	116.23	-77.7	28.9	94.6	92.1	2.49	37.908				
680.2	675.2	663.6	659.1	1.7	1.6	116.89	-89.0	41.2	113.6	110.6	3.07	37.007				
700.0	694.3	682.0	676.9	1.8	1.7	117.12	-92.0	44.5	118.8	115.6	3.22	36.930				
800.0	791.2	774.4	765.7	2.3	2.2	117.12	-109.1	63.0	146.6	142.6	4.01	36.557				
900.0	888.0	865.0	851.6	2.7	2.8	115.93	-128.7	84.2	177.1	172.2	4.85	36.507 SF				
1,000.0	984.9	957.9	938.6	3.2	3.4	114.31	-150.9	108.3	209.7	204.0	5.72	36.662				
1,100.0	1,081.8	1,052.3	1,026.9	3.7	4.0	113.07	-173.5	132.8	242.5	235.9	6.60	36.761				
1,200.0	1,178.6	1,146.6	1,115.1	4.1	4.6	112.13	-196.1	157.3	275.4	267.9	7.48	36.840				
1,300.0	1,275.5	1,241.0	1,203.4	4.6	5.2	111.39	-218.7	181.8	308.4	300.0	8.36	36.905				
1,400.0	1,372.3	1,335.3	1,291.6	5.1	5.8	110.79	-241.4	206.3	341.4	332.1	9.24	36.959				
1,500.0	1,469.2	1,429.7	1,379.9	5.6	6.4	110.30	-264.0	230.8	374.4	364.3	10.12	37.006				
1,600.0	1,566.0	1,524.0	1,468.2	6.0	7.0	109.88	-286.6	255.3	407.4	396.4	11.00	37.046				
1,700.0	1,662.9	1,618.4	1,556.4	6.5	7.7	109.53	-309.2	279.8	440.5	428.6	11.88	37.081				
1,800.0	1,759.7	1,712.7	1,644.7	7.0	8.3	109.23	-331.8	304.3	473.5	460.8	12.76	37.112				
1,900.0	1,856.6	1,807.0	1,732.9	7.5	8.9	108.97	-354.5	328.8	506.6	493.0	13.64	37.140				
2,000.0	1,953.5	1,901.4	1,821.2	7.9	9.5	108.74	-377.1	353.4	539.7	525.2	14.52	37.165				
2,100.0	2,050.3	1,995.7	1,909.4	8.4	10.1	108.53	-399.7	377.9	572.8	557.4	15.40	37.187				
2,200.0	2,147.2	2,090.1	1,997.7	8.9	10.8	108.35	-422.3	402.4	605.9	589.6	16.28	37.207				
2,300.0	2,244.0	2,184.4	2,085.9	9.4	11.4	108.19	-444.9	426.9	639.0	621.8	17.17	37.226				
2,400.0	2,340.9	2,278.8	2,174.2	9.9	12.0	108.04	-467.5	451.4	672.1	654.1	18.05	37.243				
2,500.0	2,437.7	2,373.1	2,262.5	10.3	12.6	107.91	-490.2	475.9	705.2	686.3	18.93	37.258				
2,600.0	2,534.6	2,467.5	2,350.7	10.8	13.3	107.79	-512.8	500.4	738.3	718.5	19.81	37.272				
2,700.0	2,631.4	2,561.8	2,439.0	11.3	13.9	107.68	-535.4	524.9	771.5	750.8	20.69	37.285				
2,800.0	2,728.3	2,656.2	2,527.2	11.8	14.5	107.57	-558.0	549.4	804.6	783.0	21.57	37.297				

CC - Min centre to center distance or covergent point, SF - min separation factor, ES - min ellipse separation

Cathedral Energy Services

Anticollision Report

Company:	EnCana Oil & Gas (USA) Inc	Local Co-ordinate Reference:	Well Benjamin Fee 28-9B
Project:	Mamm Creek	TVD Reference:	WELL @ 5965.0ft (Original Well Elev)
Reference Site:	K28NW Pad	MD Reference:	WELL @ 5965.0ft (Original Well Elev)
Site Error:	0.0ft	North Reference:	True
Reference Well:	Benjamin Fee 28-9B	Survey Calculation Method:	Minimum Curvature
Well Error:	0.0ft	Output errors are at	2.00 sigma
Reference Wellbore	DD	Database:	EDM 5000.1 US Multi Users DB
Reference Design:	Plan #2	Offset TVD Reference:	Offset Datum

Offset Design													Offset Site Error:	0.0 ft	
Survey Program: 0-MWD													Offset Well Error:		0.0 ft
Reference															
Offset				Semi Major Axis			Distance								
Measured Depth (ft)	Vertical Depth (ft)	Measured Depth (ft)	Vertical Depth (ft)	Reference (ft)	Offset (ft)	Highside Toolface (°)	Offset Wellbore Centre +N/-S (ft)	+E/-W (ft)	Between Centres (ft)	Between Ellipses (ft)	Total Uncertainty Axis	Separation Factor	Warning		
0.0	0.0	0.0	0.0	0.0	0.0	-118.95	-59.7	-108.0	123.4						
100.0	100.0	100.0	100.0	0.1	0.1	-118.95	-59.7	-108.0	123.4	123.1	0.27	453.267			
200.0	200.0	200.0	200.0	0.3	0.3	-118.95	-59.7	-108.0	123.4	122.8	0.62	198.623 CC, ES			
300.0	300.0	297.8	297.8	0.5	0.5	172.61	-61.4	-108.0	126.8	125.9	0.97	130.926			
400.0	399.6	395.0	394.8	0.7	0.7	171.17	-66.4	-108.0	137.2	135.8	1.33	103.483			
500.0	498.8	489.5	489.0	1.0	0.9	169.19	-74.5	-108.1	154.6	152.9	1.69	91.413			
600.0	597.1	579.6	578.3	1.4	1.1	167.04	-86.1	-109.4	180.6	178.6	2.08	86.921			
680.2	675.2	649.2	646.9	1.7	1.4	165.37	-97.8	-111.3	207.7	205.3	2.40	86.463 SF			
700.0	694.3	666.0	663.3	1.8	1.4	165.03	-100.9	-111.9	215.1	212.7	2.49	86.521			
800.0	791.2	749.0	744.4	2.3	1.8	163.33	-118.7	-115.4	254.8	251.8	2.93	86.984			
900.0	888.0	829.1	821.8	2.7	2.2	161.71	-138.9	-119.9	297.8	294.4	3.39	87.906			
1,000.0	984.9	906.1	895.3	3.2	2.6	160.20	-161.2	-125.2	344.3	340.4	3.86	89.235			
1,100.0	1,081.8	988.0	972.6	3.7	3.0	158.72	-187.4	-131.7	393.4	389.0	4.36	90.284			
1,200.0	1,178.6	1,074.6	1,054.2	4.1	3.5	157.48	-215.3	-138.6	442.9	438.0	4.87	90.874			
1,300.0	1,275.5	1,161.1	1,135.9	4.6	4.1	156.49	-243.1	-145.5	492.6	487.2	5.39	91.361			
1,400.0	1,372.3	1,247.6	1,217.5	5.1	4.6	155.67	-271.0	-152.4	542.3	536.4	5.91	91.767			
1,500.0	1,469.2	1,334.1	1,299.1	5.6	5.1	155.00	-298.8	-159.3	592.1	585.7	6.43	92.111			
1,600.0	1,566.0	1,420.6	1,380.7	6.0	5.6	154.43	-326.7	-166.2	642.0	635.0	6.95	92.408			
1,700.0	1,662.9	1,507.1	1,462.3	6.5	6.1	153.94	-354.5	-173.1	691.9	684.4	7.47	92.667			
1,800.0	1,759.7	1,593.7	1,543.9	7.0	6.6	153.51	-382.4	-180.0	741.8	733.8	7.99	92.893			
1,900.0	1,856.6	1,680.2	1,625.6	7.5	7.2	153.14	-410.3	-186.9	791.8	783.3	8.51	93.094			

Cathedral Energy Services

Anticollision Report

Company:	EnCana Oil & Gas (USA) Inc	Local Co-ordinate Reference:	Well Benjamin Fee 28-9B
Project:	Mamm Creek	TVD Reference:	WELL @ 5965.0ft (Original Well Elev)
Reference Site:	K28NW Pad	MD Reference:	WELL @ 5965.0ft (Original Well Elev)
Site Error:	0.0ft	North Reference:	True
Reference Well:	Benjamin Fee 28-9B	Survey Calculation Method:	Minimum Curvature
Well Error:	0.0ft	Output errors are at	2.00 sigma
Reference Wellbore	DD	Database:	EDM 5000.1 US Multi Users DB
Reference Design:	Plan #2	Offset TVD Reference:	Offset Datum

Offset Design													Offset Site Error:	0.0 ft	
Survey Program: 0-MWD													Offset Well Error:		0.0 ft
Reference															
Offset				Semi Major Axis			Distance								
Measured Depth (ft)	Vertical Depth (ft)	Measured Depth (ft)	Vertical Depth (ft)	Reference (ft)	Offset (ft)	Highside Toolface (°)	Offset Wellbore Centre +N/-S (ft)	+E/-W (ft)	Between Centres (ft)	Between Ellipses (ft)	Total Uncertainty Axis	Separation Factor	Warning		
0.0	0.0	0.0	0.0	0.0	0.0	-106.45	-34.2	-116.0	120.9						
100.0	100.0	100.0	100.0	0.1	0.1	-106.45	-34.2	-116.0	120.9	120.7	0.27	444.171			
200.0	200.0	200.0	200.0	0.3	0.3	-106.45	-34.2	-116.0	120.9	120.3	0.62	194.637	CC, ES		
300.0	300.0	294.4	294.3	0.5	0.5	-174.91	-35.8	-117.7	125.8	124.8	0.96	130.807			
400.0	399.6	387.4	387.1	0.7	0.7	-176.38	-40.5	-122.7	140.2	138.9	1.30	107.712			
500.0	498.8	477.7	476.7	1.0	0.9	-178.23	-47.9	-130.8	164.3	162.7	1.64	100.212	SF		
600.0	597.1	564.1	561.9	1.4	1.2	179.94	-57.7	-141.5	197.7	195.7	1.97	100.419			
680.2	675.2	630.0	626.4	1.7	1.5	178.62	-66.9	-151.5	230.8	228.6	2.22	103.882			
700.0	694.3	645.8	641.7	1.8	1.6	178.33	-69.3	-154.1	239.8	237.5	2.29	104.803			
800.0	791.2	723.5	717.0	2.3	1.9	177.01	-82.5	-168.5	287.1	284.4	2.61	109.786			
900.0	888.0	800.0	790.2	2.7	2.4	175.87	-97.5	-184.8	337.8	334.9	2.94	114.843			
1,000.0	984.9	868.8	855.2	3.2	2.8	174.95	-112.7	-201.3	391.7	388.5	3.26	120.102			
1,100.0	1,081.8	936.4	918.3	3.7	3.3	174.14	-129.1	-219.2	448.7	445.1	3.58	125.327			
1,200.0	1,178.6	1,000.0	976.8	4.1	3.7	173.45	-146.0	-237.5	508.4	504.5	3.89	130.699			
1,300.0	1,275.5	1,061.9	1,032.9	4.6	4.2	172.83	-163.6	-256.7	570.7	566.5	4.20	135.736			
1,400.0	1,372.3	1,120.0	1,084.8	5.1	4.7	172.29	-181.3	-276.0	635.5	631.0	4.51	140.900			
1,500.0	1,469.2	1,175.2	1,133.4	5.6	5.2	171.81	-199.1	-295.3	702.4	697.6	4.81	145.960			
1,600.0	1,566.0	1,238.3	1,188.1	6.0	5.8	171.31	-220.4	-318.4	771.2	766.0	5.13	150.330			

Cathedral Energy Services

Anticollision Report

Company:	EnCana Oil & Gas (USA) Inc	Local Co-ordinate Reference:	Well Benjamin Fee 28-9B
Project:	Mamm Creek	TVD Reference:	WELL @ 5965.0ft (Original Well Elev)
Reference Site:	K28NW Pad	MD Reference:	WELL @ 5965.0ft (Original Well Elev)
Site Error:	0.0ft	North Reference:	True
Reference Well:	Benjamin Fee 28-9B	Survey Calculation Method:	Minimum Curvature
Well Error:	0.0ft	Output errors are at	2.00 sigma
Reference Wellbore	DD	Database:	EDM 5000.1 US Multi Users DB
Reference Design:	Plan #2	Offset TVD Reference:	Offset Datum

Offset Design													Offset Site Error:	0.0 ft	
Survey Program: 0-MWD													Offset Well Error:		0.0 ft
Reference															
Offset				Semi Major Axis			Distance								
Measured Depth (ft)	Vertical Depth (ft)	Measured Depth (ft)	Vertical Depth (ft)	Reference (ft)	Offset (ft)	Highside Toolface (°)	Offset Wellbore Centre +N/-S (ft)	+E/-W (ft)	Between Centres (ft)	Between Ellipses (ft)	Total Uncertainty Axis	Separation Factor	Warning		
0.0	0.0	0.0	0.0	0.0	0.0	180.00	-17.1	0.0	17.1						
100.0	100.0	100.0	100.0	0.1	0.1	180.00	-17.1	0.0	17.1	16.8	0.27	62.876			
200.0	200.0	200.0	200.0	0.3	0.3	180.00	-17.1	0.0	17.1	16.5	0.62	27.552 CC, ES			
300.0	300.0	300.0	300.0	0.5	0.5	111.47	-17.0	2.6	18.0	17.0	0.99	18.236			
400.0	399.6	400.0	399.7	0.7	0.7	109.89	-16.6	10.5	20.6	19.2	1.42	14.477			
500.0	498.8	499.9	498.7	1.0	1.0	107.98	-16.1	23.5	25.0	23.0	1.98	12.588			
600.0	597.1	599.7	596.8	1.4	1.3	106.76	-15.3	41.3	31.1	28.4	2.68	11.601			
680.2	675.2	679.6	675.3	1.7	1.6	110.25	-14.6	56.5	37.2	33.9	3.28	11.321			
700.0	694.3	699.3	694.7	1.8	1.7	111.55	-14.4	60.2	38.8	35.4	3.43	11.330			
800.0	791.2	798.9	792.4	2.3	2.1	116.68	-13.5	79.1	47.5	43.4	4.16	11.434			
900.0	888.0	898.4	890.1	2.7	2.4	120.21	-12.7	98.0	56.5	51.6	4.88	11.590			
1,000.0	984.9	998.0	987.9	3.2	2.8	122.77	-11.8	116.9	65.6	60.0	5.59	11.750			
1,100.0	1,081.8	1,097.5	1,085.6	3.7	3.2	124.70	-11.0	135.8	74.8	68.6	6.29	11.901			
1,200.0	1,178.6	1,197.1	1,183.3	4.1	3.6	126.21	-10.1	154.7	84.1	77.1	6.99	12.038			
1,300.0	1,275.5	1,296.6	1,281.1	4.6	3.9	127.41	-9.3	173.6	93.5	85.8	7.68	12.160			
1,400.0	1,372.3	1,396.2	1,378.8	5.1	4.3	128.40	-8.4	192.5	102.8	94.4	8.38	12.270			
1,500.0	1,469.2	1,495.7	1,476.5	5.6	4.7	129.22	-7.6	211.4	112.2	103.1	9.07	12.367			
1,600.0	1,566.0	1,595.3	1,574.3	6.0	5.1	129.92	-6.7	230.3	121.6	111.8	9.76	12.455			
1,700.0	1,662.9	1,694.8	1,672.0	6.5	5.4	130.51	-5.9	249.1	131.0	120.6	10.45	12.533			
1,800.0	1,759.7	1,794.3	1,769.7	7.0	5.8	131.03	-5.0	268.0	140.5	129.3	11.14	12.603			
1,900.0	1,856.6	1,893.9	1,867.5	7.5	6.2	131.48	-4.2	286.9	149.9	138.1	11.83	12.667			
2,000.0	1,953.5	1,993.4	1,965.2	7.9	6.6	131.88	-3.3	305.8	159.4	146.8	12.52	12.725			
2,100.0	2,050.3	2,093.0	2,062.9	8.4	6.9	132.23	-2.5	324.7	168.8	155.6	13.21	12.778			
2,200.0	2,147.2	2,192.5	2,160.7	8.9	7.3	132.54	-1.6	343.6	178.3	164.4	13.90	12.827			
2,300.0	2,244.0	2,292.1	2,258.4	9.4	7.7	132.83	-0.7	362.5	187.7	173.2	14.59	12.871			
2,400.0	2,340.9	2,391.6	2,356.1	9.9	8.1	133.08	0.1	381.4	197.2	181.9	15.27	12.912			
2,500.0	2,437.7	2,491.2	2,453.9	10.3	8.5	133.32	1.0	400.3	206.7	190.7	15.96	12.950			
2,600.0	2,534.6	2,590.7	2,551.6	10.8	8.8	133.53	1.8	419.2	216.2	199.5	16.65	12.985			
2,700.0	2,631.4	2,690.3	2,649.3	11.3	9.2	133.72	2.7	438.1	225.6	208.3	17.33	13.017			
2,800.0	2,728.3	2,789.8	2,747.1	11.8	9.6	133.90	3.5	456.9	235.1	217.1	18.02	13.048			
2,900.0	2,825.2	2,889.4	2,844.8	12.2	10.0	134.07	4.4	475.8	244.6	225.9	18.71	13.076			
3,000.0	2,922.0	2,988.9	2,942.6	12.7	10.3	134.22	5.2	494.7	254.1	234.7	19.39	13.102			
3,100.0	3,018.9	3,088.5	3,040.3	13.2	10.7	134.36	6.1	513.6	263.6	243.5	20.08	13.127			
3,200.0	3,115.7	3,188.0	3,138.0	13.7	11.1	134.49	6.9	532.5	273.1	252.3	20.77	13.150			
3,300.0	3,212.6	3,287.5	3,235.8	14.2	11.5	134.62	7.8	551.4	282.6	261.1	21.45	13.172			
3,400.0	3,309.4	3,387.1	3,333.5	14.6	11.9	134.73	8.6	570.3	292.1	269.9	22.14	13.193			
3,500.0	3,406.3	3,486.6	3,431.2	15.1	12.2	134.84	9.5	589.2	301.6	278.7	22.82	13.213			
3,600.0	3,503.1	3,586.2	3,529.0	15.6	12.6	134.94	10.3	608.1	311.1	287.5	23.51	13.231			
3,700.0	3,600.0	3,685.7	3,626.7	16.1	13.0	135.04	11.2	627.0	320.6	296.4	24.20	13.248			
3,800.0	3,696.9	3,785.3	3,724.4	16.5	13.4	135.13	12.0	645.9	330.1	305.2	24.88	13.265			
3,900.0	3,793.7	3,884.8	3,822.2	17.0	13.7	135.21	12.9	664.8	339.6	314.0	25.57	13.281			
4,000.0	3,890.6	3,984.4	3,919.9	17.5	14.1	135.29	13.8	683.6	349.1	322.8	26.25	13.296			
4,100.0	3,987.4	4,083.9	4,017.6	18.0	14.5	135.37	14.6	702.5	358.5	331.6	26.94	13.310			
4,200.0	4,084.3	4,183.5	4,115.4	18.5	14.9	135.44	15.5	721.4	368.0	340.4	27.62	13.323			
4,300.0	4,181.1	4,283.0	4,213.1	18.9	15.3	135.51	16.3	740.3	377.5	349.2	28.31	13.336			
4,400.0	4,278.0	4,382.6	4,310.8	19.4	15.6	135.57	17.2	759.2	387.1	358.1	29.00	13.349			
4,500.0	4,374.8	4,482.1	4,408.6	19.9	16.0	135.63	18.0	778.1	396.6	366.9	29.68	13.361			
4,600.0	4,471.7	4,581.7	4,506.3	20.4	16.4	135.69	18.9	797.0	406.1	375.7	30.37	13.372			
4,700.0	4,568.6	4,681.2	4,604.0	20.9	16.8	135.75	19.7	815.9	415.6	384.5	31.05	13.383			
4,800.0	4,665.4	4,780.7	4,701.8	21.3	17.1	135.80	20.6	834.8	425.1	393.3	31.74	13.393			
4,900.0	4,762.3	4,880.3	4,799.5	21.8	17.5	135.85	21.4	853.7	434.6	402.1	32.42	13.403			
5,000.0	4,859.1	4,979.8	4,897.2	22.3	17.9	135.90	22.3	872.6	444.1	411.0	33.11	13.413			

CC - Min centre to center distance or convergent point, SF - min separation factor, ES - min ellipse separation

Cathedral Energy Services

Anticollision Report

Company:	EnCana Oil & Gas (USA) Inc	Local Co-ordinate Reference:	Well Benjamin Fee 28-9B
Project:	Mamm Creek	TVD Reference:	WELL @ 5965.0ft (Original Well Elev)
Reference Site:	K28NW Pad	MD Reference:	WELL @ 5965.0ft (Original Well Elev)
Site Error:	0.0ft	North Reference:	True
Reference Well:	Benjamin Fee 28-9B	Survey Calculation Method:	Minimum Curvature
Well Error:	0.0ft	Output errors are at	2.00 sigma
Reference Wellbore	DD	Database:	EDM 5000.1 US Multi Users DB
Reference Design:	Plan #2	Offset TVD Reference:	Offset Datum

Offset Design													Offset Site Error:	0.0 ft								
Survey Program: 0-MWD													Offset Well Error:		0.0 ft							
Reference													Offset		Semi Major Axis		Distance				Warning	
Measured Depth (ft)	Vertical Depth (ft)	Measured Depth (ft)	Vertical Depth (ft)	Reference (ft)	Offset (ft)	Highside Toolface (°)	Offset Wellbore Centre +N/-S (ft)	+E/-W (ft)	Between Centres (ft)	Between Ellipses (ft)	Total Uncertainty Axis	Separation Factor	Warning									
5,100.0	4,956.0	5,079.4	4,995.0	22.8	18.3	135.95	23.1	891.4	453.6	419.8	33.79	13.422										
5,200.0	5,052.8	5,178.9	5,092.7	23.2	18.7	135.99	24.0	910.3	463.1	428.6	34.48	13.431										
5,300.0	5,149.7	5,278.5	5,190.4	23.7	19.0	136.04	24.8	929.2	472.6	437.4	35.16	13.439										
5,400.0	5,246.5	5,378.0	5,288.2	24.2	19.4	136.08	25.7	948.1	482.1	446.2	35.85	13.447										
5,500.0	5,343.4	5,477.6	5,385.9	24.7	19.8	136.12	26.6	967.0	491.6	455.1	36.53	13.455										
5,600.0	5,440.3	5,577.1	5,483.6	25.2	20.2	136.16	27.4	985.9	501.1	463.9	37.22	13.463										
5,700.0	5,537.1	5,676.7	5,581.4	25.6	20.5	136.20	28.3	1,004.8	510.6	472.7	37.91	13.470										
5,800.0	5,634.0	5,776.2	5,679.1	26.1	20.9	136.23	29.1	1,023.7	520.1	481.5	38.59	13.477										
5,900.0	5,730.8	5,875.8	5,776.8	26.6	21.3	136.27	30.0	1,042.6	529.6	490.3	39.28	13.484										
6,000.0	5,827.7	5,975.3	5,874.6	27.1	21.7	136.30	30.8	1,061.5	539.1	499.2	39.96	13.491										
6,020.2	5,847.2	5,995.4	5,894.3	27.2	21.8	136.31	31.0	1,065.3	541.0	500.9	40.10	13.492										
6,100.0	5,924.8	6,074.9	5,972.4	27.5	22.1	136.34	31.7	1,080.4	547.8	507.2	40.65	13.476										
6,200.0	6,022.7	6,168.6	6,064.5	27.9	22.4	136.24	32.4	1,097.3	554.5	513.2	41.30	13.425										
6,300.0	6,121.2	6,260.3	6,155.2	28.2	22.6	136.17	33.1	1,111.1	560.0	518.2	41.85	13.381										
6,400.0	6,220.3	6,352.1	6,246.3	28.5	22.9	136.12	33.5	1,121.9	564.5	522.2	42.31	13.344										
6,500.0	6,319.8	6,443.9	6,337.7	28.7	23.0	136.10	33.9	1,129.9	568.0	525.3	42.67	13.312										
6,600.0	6,419.5	6,535.7	6,429.4	28.8	23.2	136.11	34.1	1,134.9	570.3	527.4	42.93	13.285										
6,700.0	6,519.5	6,627.5	6,521.2	28.9	23.3	136.14	34.2	1,137.0	571.6	528.5	43.11	13.259										
6,740.5	6,560.0	6,666.3	6,560.0	28.9	23.3	-155.94	34.2	1,137.0	571.8	528.6	43.17	13.245										
6,800.0	6,619.5	6,725.8	6,619.5	29.0	23.3	-155.94	34.2	1,137.0	571.8	528.5	43.28	13.211										
6,900.0	6,719.5	6,825.8	6,719.5	29.0	23.4	-155.94	34.2	1,137.0	571.8	528.3	43.47	13.153										
7,000.0	6,819.5	6,925.8	6,819.5	29.1	23.5	-155.94	34.2	1,137.0	571.8	528.1	43.66	13.095										
7,100.0	6,919.5	7,025.8	6,919.5	29.2	23.6	-155.94	34.2	1,137.0	571.8	527.9	43.86	13.037										
7,200.0	7,019.5	7,125.8	7,019.5	29.3	23.7	-155.94	34.2	1,137.0	571.8	527.7	44.05	12.979										
7,300.0	7,119.5	7,225.8	7,119.5	29.3	23.8	-155.94	34.2	1,137.0	571.8	527.5	44.25	12.920										
7,400.0	7,219.5	7,325.8	7,219.5	29.4	23.9	-155.94	34.2	1,137.0	571.8	527.3	44.45	12.862										
7,500.0	7,319.5	7,425.8	7,319.5	29.5	24.0	-155.94	34.2	1,137.0	571.8	527.1	44.65	12.804										
7,600.0	7,419.5	7,525.8	7,419.5	29.6	24.1	-155.94	34.2	1,137.0	571.8	526.9	44.86	12.746										
7,700.0	7,519.5	7,625.8	7,519.5	29.6	24.2	-155.94	34.2	1,137.0	571.8	526.7	45.06	12.688										
7,800.0	7,619.5	7,725.8	7,619.5	29.7	24.3	-155.94	34.2	1,137.0	571.8	526.5	45.27	12.629										
7,900.0	7,719.5	7,825.8	7,719.5	29.8	24.4	-155.94	34.2	1,137.0	571.8	526.3	45.48	12.571										
8,000.0	7,819.5	7,925.8	7,819.5	29.9	24.5	-155.94	34.2	1,137.0	571.8	526.1	45.69	12.513										
8,100.0	7,919.5	8,025.8	7,919.5	30.0	24.6	-155.94	34.2	1,137.0	571.8	525.8	45.90	12.455										
8,200.0	8,019.5	8,125.8	8,019.5	30.1	24.7	-155.94	34.2	1,137.0	571.8	525.6	46.12	12.397										
8,300.0	8,119.5	8,225.8	8,119.5	30.1	24.8	-155.94	34.2	1,137.0	571.8	525.4	46.33	12.340										
8,400.0	8,219.5	8,325.8	8,219.5	30.2	24.9	-155.94	34.2	1,137.0	571.8	525.2	46.55	12.282										
8,500.0	8,319.5	8,425.8	8,319.5	30.3	25.0	-155.94	34.2	1,137.0	571.8	525.0	46.77	12.224										
8,600.0	8,419.5	8,525.8	8,419.5	30.4	25.1	-155.94	34.2	1,137.0	571.8	524.8	46.99	12.167										
8,700.0	8,519.5	8,625.8	8,519.5	30.5	25.2	-155.94	34.2	1,137.0	571.8	524.5	47.21	12.110										
8,800.0	8,619.5	8,725.8	8,619.5	30.6	25.3	-155.94	34.2	1,137.0	571.8	524.3	47.44	12.053										
8,900.0	8,719.5	8,825.8	8,719.5	30.7	25.4	-155.94	34.2	1,137.0	571.8	524.1	47.66	11.996										
9,000.0	8,819.5	8,925.8	8,819.5	30.7	25.5	-155.94	34.2	1,137.0	571.8	523.9	47.89	11.939										
9,100.0	8,919.5	9,025.8	8,919.5	30.8	25.6	-155.94	34.2	1,137.0	571.8	523.6	48.12	11.882										
9,200.0	9,019.5	9,125.8	9,019.5	30.9	25.7	-155.94	34.2	1,137.0	571.8	523.4	48.35	11.826										
9,300.0	9,119.5	9,225.8	9,119.5	31.0	25.8	-155.94	34.2	1,137.0	571.8	523.2	48.58	11.770										
9,400.0	9,219.5	9,325.8	9,219.5	31.1	25.9	-155.94	34.2	1,137.0	571.8	522.9	48.81	11.714										
9,500.0	9,319.5	9,425.8	9,319.5	31.2	26.0	-155.94	34.2	1,137.0	571.8	522.7	49.05	11.658										
9,600.0	9,419.5	9,525.8	9,419.5	31.3	26.1	-155.94	34.2	1,137.0	571.8	522.5	49.28	11.602										
9,700.0	9,519.5	9,625.8	9,519.5	31.4	26.2	-155.94	34.2	1,137.0	571.8	522.2	49.52	11.547										
9,800.0	9,619.5	9,725.8	9,619.5	31.5	26.4	-155.94	34.2	1,137.0	571.8	522.0	49.75	11.491										
9,890.5	9,710.0	9,816.3	9,710.0	31.6	26.5	-155.94	34.2	1,137.0	571.8	521.8	49.97	11.442										
9,900.0	9,719.5	9,825.8	9,719.5	31.6	26.5	-155.94	34.2	1,137.0	571.8	521.8	49.99	11.436										

CC - Min centre to center distance or convergent point, SF - min separation factor, ES - min ellipse separation

Cathedral Energy Services

Anticollision Report

Company:	EnCana Oil & Gas (USA) Inc	Local Co-ordinate Reference:	Well Benjamin Fee 28-9B
Project:	Mamm Creek	TVD Reference:	WELL @ 5965.0ft (Original Well Elev)
Reference Site:	K28NW Pad	MD Reference:	WELL @ 5965.0ft (Original Well Elev)
Site Error:	0.0ft	North Reference:	True
Reference Well:	Benjamin Fee 28-9B	Survey Calculation Method:	Minimum Curvature
Well Error:	0.0ft	Output errors are at	2.00 sigma
Reference Wellbore	DD	Database:	EDM 5000.1 US Multi Users DB
Reference Design:	Plan #2	Offset TVD Reference:	Offset Datum

Offset Design													Offset Site Error:	0.0 ft	
Survey Program: 0-MWD													Offset Well Error:		0.0 ft
Reference		Offset		Semi Major Axis			Distance						Warning		
Measured Depth (ft)	Vertical Depth (ft)	Measured Depth (ft)	Vertical Depth (ft)	Reference (ft)	Offset (ft)	Highside Toolface (°)	Offset Wellbore Centre +N/-S (ft)	+E/-W (ft)	Between Centres (ft)	Between Ellipses (ft)	Total Uncertainty Axis	Separation Factor			
10,000.0	9,819.5	9,925.8	9,819.5	31.7	26.6	-155.94	34.2	1,137.0	571.8	521.5	50.23	11.382			
10,100.0	9,919.5	10,025.8	9,919.5	31.8	26.7	-155.94	34.2	1,137.0	571.8	521.3	50.48	11.327			
10,151.8	9,971.3	10,077.6	9,971.3	31.8	26.8	-155.94	34.2	1,137.0	571.8	521.2	50.60	11.299			
10,190.5	10,010.0	10,096.3	9,990.0	31.8	26.8	-155.94	34.2	1,137.0	572.1	521.4	50.67	11.290 SF			

Cathedral Energy Services

Anticollision Report

Company:	EnCana Oil & Gas (USA) Inc	Local Co-ordinate Reference:	Well Benjamin Fee 28-9B
Project:	Mamm Creek	TVD Reference:	WELL @ 5965.0ft (Original Well Elev)
Reference Site:	K28NW Pad	MD Reference:	WELL @ 5965.0ft (Original Well Elev)
Site Error:	0.0ft	North Reference:	True
Reference Well:	Benjamin Fee 28-9B	Survey Calculation Method:	Minimum Curvature
Well Error:	0.0ft	Output errors are at	2.00 sigma
Reference Wellbore	DD	Database:	EDM 5000.1 US Multi Users DB
Reference Design:	Plan #2	Offset TVD Reference:	Offset Datum

Offset Design													Offset Site Error:	0.0 ft	
Survey Program: 0-MWD													Offset Well Error:		0.0 ft
Reference															
Offset				Semi Major Axis			Distance								
Measured Depth (ft)	Vertical Depth (ft)	Measured Depth (ft)	Vertical Depth (ft)	Reference (ft)	Offset (ft)	Highside Toolface (°)	Offset Wellbore Centre +N/-S (ft)	+E/-W (ft)	Between Centres (ft)	Between Ellipses (ft)	Total Uncertainty Axis	Separation Factor	Warning		
0.0	0.0	0.0	0.0	0.0	0.0	-136.89	-8.7	-8.2	12.0						
100.0	100.0	100.0	100.0	0.1	0.1	-136.89	-8.7	-8.2	12.0	11.7	0.27	43.981			
200.0	200.0	200.0	200.0	0.3	0.3	-136.89	-8.7	-8.2	12.0	11.4	0.62	19.273 CC, ES			
300.0	300.0	299.6	299.6	0.5	0.5	168.88	-7.4	-10.4	15.4	14.4	0.98	15.729 SF			
400.0	399.6	398.0	397.6	0.7	0.7	-173.42	-3.5	-17.0	27.8	26.5	1.34	20.733			
500.0	498.8	495.4	494.5	1.0	0.9	-165.60	2.0	-26.4	48.8	47.1	1.71	28.599			
600.0	597.1	591.9	590.3	1.4	1.2	-163.52	7.5	-35.7	75.1	73.0	2.08	36.083			
680.2	675.2	668.2	666.2	1.7	1.4	-163.21	11.9	-43.1	99.7	97.3	2.39	41.797			
700.0	694.3	686.9	684.8	1.8	1.4	-163.26	13.0	-44.9	106.1	103.7	2.46	43.088			
800.0	791.2	781.5	778.7	2.3	1.7	-163.45	18.4	-54.0	138.7	135.9	2.86	48.499			
900.0	888.0	876.0	872.7	2.7	1.9	-163.56	23.8	-63.2	171.3	168.0	3.26	52.554			
1,000.0	984.9	970.6	966.6	3.2	2.2	-163.64	29.2	-72.3	203.8	200.2	3.66	55.701			
1,100.0	1,081.8	1,065.1	1,060.6	3.7	2.4	-163.70	34.6	-81.5	236.4	232.3	4.06	58.212			
1,200.0	1,178.6	1,159.7	1,154.5	4.1	2.7	-163.75	40.0	-90.6	269.0	264.5	4.46	60.260			
1,300.0	1,275.5	1,254.2	1,248.5	4.6	2.9	-163.78	45.4	-99.7	301.5	296.7	4.87	61.961			
1,400.0	1,372.3	1,348.8	1,342.4	5.1	3.2	-163.81	50.9	-108.9	334.1	328.8	5.27	63.397			
1,500.0	1,469.2	1,443.3	1,436.4	5.6	3.4	-163.83	56.3	-118.0	366.7	361.0	5.67	64.625			
1,600.0	1,566.0	1,537.9	1,530.3	6.0	3.7	-163.85	61.7	-127.2	399.2	393.2	6.08	65.686			
1,700.0	1,662.9	1,632.4	1,624.3	6.5	3.9	-163.87	67.1	-136.3	431.8	425.3	6.48	66.612			
1,800.0	1,759.7	1,727.0	1,718.2	7.0	4.1	-163.88	72.5	-145.5	464.4	457.5	6.89	67.428			
1,900.0	1,856.6	1,821.5	1,812.2	7.5	4.4	-163.89	77.9	-154.6	496.9	489.7	7.29	68.152			
2,000.0	1,953.5	1,916.1	1,906.1	7.9	4.6	-163.90	83.3	-163.8	529.5	521.8	7.70	68.798			
2,100.0	2,050.3	2,010.6	2,000.1	8.4	4.9	-163.91	88.7	-172.9	562.1	554.0	8.10	69.379			
2,200.0	2,147.2	2,105.2	2,094.0	8.9	5.1	-163.92	94.1	-182.0	594.6	586.1	8.51	69.904			
2,300.0	2,244.0	2,199.7	2,188.0	9.4	5.4	-163.93	99.6	-191.2	627.2	618.3	8.91	70.380			
2,400.0	2,340.9	2,294.3	2,281.9	9.9	5.6	-163.94	105.0	-200.3	659.8	650.5	9.32	70.815			
2,500.0	2,437.7	2,388.8	2,375.9	10.3	5.9	-163.94	110.4	-209.5	692.3	682.6	9.72	71.212			
2,600.0	2,534.6	2,483.4	2,469.8	10.8	6.1	-163.95	115.8	-218.6	724.9	714.8	10.13	71.578			
2,700.0	2,631.4	2,577.9	2,563.8	11.3	6.4	-163.95	121.2	-227.8	757.5	746.9	10.53	71.915			
2,800.0	2,728.3	2,672.5	2,657.7	11.8	6.6	-163.96	126.6	-236.9	790.0	779.1	10.94	72.226			
2,900.0	2,825.2	2,767.0	2,751.7	12.2	6.9	-163.96	132.0	-246.0	822.6	811.3	11.34	72.516			

CC - Min centre to center distance or convergent point, SF - min separation factor, ES - min ellipse separation

Cathedral Energy Services

Anticollision Report

Company:	EnCana Oil & Gas (USA) Inc	Local Co-ordinate Reference:	Well Benjamin Fee 28-9B
Project:	Mamm Creek	TVD Reference:	WELL @ 5965.0ft (Original Well Elev)
Reference Site:	K28NW Pad	MD Reference:	WELL @ 5965.0ft (Original Well Elev)
Site Error:	0.0ft	North Reference:	True
Reference Well:	Benjamin Fee 28-9B	Survey Calculation Method:	Minimum Curvature
Well Error:	0.0ft	Output errors are at	2.00 sigma
Reference Wellbore	DD	Database:	EDM 5000.1 US Multi Users DB
Reference Design:	Plan #2	Offset TVD Reference:	Offset Datum

Offset Design													Offset Site Error:	0.0 ft	
Survey Program: 0-MWD													Offset Well Error:		0.0 ft
Reference															
Offset				Semi Major Axis			Distance								
Measured Depth (ft)	Vertical Depth (ft)	Measured Depth (ft)	Vertical Depth (ft)	Reference (ft)	Offset (ft)	Highside Toolface (°)	Offset Wellbore Centre +N/-S (ft)	+E/-W (ft)	Between Centres (ft)	Between Ellipses (ft)	Total Uncertainty Axis	Separation Factor	Warning		
0.0	0.0	0.0	0.0	0.0	0.0	-44.33	8.4	-8.2	11.7						
100.0	100.0	100.0	100.0	0.1	0.1	-44.33	8.4	-8.2	11.7	11.4	0.27	43.014			
200.0	200.0	200.0	200.0	0.3	0.3	-44.33	8.4	-8.2	11.7	11.1	0.62	18.849 CC, ES			
300.0	300.0	299.2	299.2	0.5	0.5	-120.63	10.3	-9.9	15.5	14.5	0.98	15.856 SF			
400.0	399.6	397.4	397.0	0.7	0.7	-131.23	16.0	-14.9	27.6	26.2	1.35	20.385			
500.0	498.8	493.5	492.4	1.0	1.0	-136.70	25.2	-23.1	48.2	46.5	1.76	27.335			
600.0	597.1	589.8	587.6	1.4	1.3	-140.42	36.0	-32.7	74.8	72.6	2.21	33.789			
680.2	675.2	666.1	663.0	1.7	1.5	-143.06	44.6	-40.3	99.2	96.6	2.59	38.261			
700.0	694.3	684.8	681.5	1.8	1.5	-143.75	46.7	-42.1	105.5	102.8	2.69	39.278			
800.0	791.2	779.4	775.0	2.3	1.8	-146.25	57.2	-51.5	137.8	134.6	3.17	43.492			
900.0	888.0	873.9	868.4	2.7	2.1	-147.80	67.8	-60.9	170.2	166.5	3.65	46.597			
1,000.0	984.9	968.4	961.9	3.2	2.4	-148.85	78.4	-70.3	202.7	198.6	4.14	48.971			
1,100.0	1,081.8	1,062.9	1,055.3	3.7	2.7	-149.62	89.0	-79.7	235.2	230.6	4.63	50.841			
1,200.0	1,178.6	1,157.4	1,148.8	4.1	3.0	-150.20	99.6	-89.1	267.8	262.7	5.12	52.350			
1,300.0	1,275.5	1,251.9	1,242.2	4.6	3.3	-150.65	110.2	-98.5	300.4	294.8	5.60	53.593			
1,400.0	1,372.3	1,346.5	1,335.7	5.1	3.6	-151.01	120.8	-107.9	333.0	326.9	6.09	54.634			
1,500.0	1,469.2	1,441.0	1,429.1	5.6	3.9	-151.31	131.4	-117.3	365.6	359.0	6.58	55.518			
1,600.0	1,566.0	1,535.5	1,522.6	6.0	4.2	-151.56	142.0	-126.7	398.2	391.1	7.08	56.278			
1,700.0	1,662.9	1,630.0	1,616.0	6.5	4.5	-151.77	152.6	-136.1	430.8	423.3	7.57	56.938			
1,800.0	1,759.7	1,724.5	1,709.5	7.0	4.8	-151.96	163.2	-145.5	463.4	455.4	8.06	57.516			
1,900.0	1,856.6	1,819.1	1,802.9	7.5	5.1	-152.12	173.8	-154.9	496.1	487.5	8.55	58.028			
2,000.0	1,953.5	1,913.6	1,896.4	7.9	5.4	-152.25	184.4	-164.3	528.7	519.7	9.04	58.483			
2,100.0	2,050.3	2,008.1	1,989.8	8.4	5.7	-152.38	195.0	-173.7	561.3	551.8	9.53	58.891			
2,200.0	2,147.2	2,102.6	2,083.3	8.9	6.0	-152.49	205.6	-183.1	594.0	584.0	10.02	59.258			
2,300.0	2,244.0	2,197.1	2,176.7	9.4	6.3	-152.58	216.2	-192.5	626.6	616.1	10.52	59.590			
2,400.0	2,340.9	2,291.6	2,270.2	9.9	6.6	-152.67	226.8	-201.9	659.3	648.3	11.01	59.893			
2,500.0	2,437.7	2,386.2	2,363.6	10.3	6.9	-152.75	237.4	-211.3	691.9	680.4	11.50	60.169			
2,600.0	2,534.6	2,480.7	2,457.1	10.8	7.2	-152.82	248.0	-220.7	724.5	712.6	11.99	60.423			
2,700.0	2,631.4	2,575.2	2,550.5	11.3	7.5	-152.89	258.5	-230.1	757.2	744.7	12.48	60.656			
2,800.0	2,728.3	2,669.7	2,644.0	11.8	7.8	-152.95	269.1	-239.5	789.8	776.9	12.98	60.871			
2,900.0	2,825.2	2,764.2	2,737.4	12.2	8.1	-153.01	279.7	-248.9	822.5	809.0	13.47	61.071			

Cathedral Energy Services

Anticollision Report

Company:	EnCana Oil & Gas (USA) Inc	Local Co-ordinate Reference:	Well Benjamin Fee 28-9B
Project:	Mamm Creek	TVD Reference:	WELL @ 5965.0ft (Original Well Elev)
Reference Site:	K28NW Pad	MD Reference:	WELL @ 5965.0ft (Original Well Elev)
Site Error:	0.0ft	North Reference:	True
Reference Well:	Benjamin Fee 28-9B	Survey Calculation Method:	Minimum Curvature
Well Error:	0.0ft	Output errors are at	2.00 sigma
Reference Wellbore	DD	Database:	EDM 5000.1 US Multi Users DB
Reference Design:	Plan #2	Offset TVD Reference:	Offset Datum

Offset Design													Offset Site Error:	0.0 ft	
Survey Program: 0-MWD													Offset Well Error:		0.0 ft
Reference															
Offset				Semi Major Axis			Distance								
Measured Depth (ft)	Vertical Depth (ft)	Measured Depth (ft)	Vertical Depth (ft)	Reference (ft)	Offset (ft)	Highside Toolface (°)	Offset Wellbore Centre +N/-S (ft)	+E/-W (ft)	Between Centres (ft)	Between Ellipses (ft)	Total Uncertainty Axis	Separation Factor	Warning		
0.0	0.0	0.0	0.0	0.0	0.0	180.00	-34.2	0.0	34.2						
100.0	100.0	100.0	100.0	0.1	0.1	180.00	-34.2	0.0	34.2	34.0	0.27	125.752			
200.0	200.0	200.0	200.0	0.3	0.3	180.00	-34.2	0.0	34.2	33.6	0.62	55.105 CC, ES			
300.0	300.0	299.1	299.1	0.5	0.5	112.27	-35.5	2.3	36.5	35.5	0.98	37.116			
400.0	399.6	397.9	397.5	0.7	0.7	112.66	-39.2	9.0	43.2	41.7	1.40	30.729			
500.0	498.8	496.1	494.9	1.0	1.0	113.04	-45.2	20.1	54.2	52.3	1.93	28.128			
600.0	597.1	593.5	590.7	1.4	1.3	113.29	-53.6	35.4	69.7	67.1	2.58	26.987			
680.2	675.2	671.2	666.5	1.7	1.7	113.44	-62.0	50.6	85.1	82.0	3.19	26.688			
700.0	694.3	690.6	685.3	1.8	1.7	113.68	-64.1	54.6	89.2	85.9	3.35	26.667			
800.0	791.2	788.4	780.5	2.3	2.2	114.63	-75.1	74.6	109.8	105.6	4.14	26.499			
900.0	888.0	886.3	875.6	2.7	2.6	115.28	-86.1	94.6	130.3	125.4	4.95	26.320			
1,000.0	984.9	984.1	970.8	3.2	3.0	115.76	-97.0	114.6	150.9	145.2	5.77	26.157			
1,100.0	1,081.8	1,082.0	1,065.9	3.7	3.5	116.12	-108.0	134.7	171.5	164.9	6.59	26.017			
1,200.0	1,178.6	1,179.8	1,161.1	4.1	3.9	116.40	-118.9	154.7	192.1	184.7	7.42	25.898			
1,300.0	1,275.5	1,277.7	1,256.2	4.6	4.3	116.63	-129.9	174.7	212.7	204.5	8.25	25.796			
1,400.0	1,372.3	1,375.5	1,351.4	5.1	4.8	116.81	-140.9	194.7	233.3	224.2	9.08	25.709			
1,500.0	1,469.2	1,473.4	1,446.5	5.6	5.2	116.97	-151.8	214.7	253.9	244.0	9.91	25.633			
1,600.0	1,566.0	1,571.2	1,541.7	6.0	5.6	117.10	-162.8	234.8	274.5	263.8	10.74	25.567			
1,700.0	1,662.9	1,669.1	1,636.8	6.5	6.1	117.22	-173.7	254.8	295.1	283.6	11.57	25.509			
1,800.0	1,759.7	1,767.0	1,732.0	7.0	6.5	117.32	-184.7	274.8	315.8	303.4	12.40	25.458			
1,900.0	1,856.6	1,864.8	1,827.1	7.5	7.0	117.41	-195.7	294.8	336.4	323.1	13.24	25.412			
2,000.0	1,953.5	1,962.7	1,922.3	7.9	7.4	117.48	-206.6	314.8	357.0	342.9	14.07	25.371			
2,100.0	2,050.3	2,060.5	2,017.4	8.4	7.8	117.55	-217.6	334.9	377.6	362.7	14.90	25.334			
2,200.0	2,147.2	2,158.4	2,112.6	8.9	8.3	117.62	-228.5	354.9	398.2	382.5	15.74	25.301			
2,300.0	2,244.0	2,256.2	2,207.8	9.4	8.7	117.67	-239.5	374.9	418.8	402.2	16.57	25.271			
2,400.0	2,340.9	2,354.1	2,302.9	9.9	9.2	117.72	-250.5	394.9	439.4	422.0	17.41	25.243			
2,500.0	2,437.7	2,451.9	2,398.1	10.3	9.6	117.77	-261.4	414.9	460.0	441.8	18.24	25.218			
2,600.0	2,534.6	2,549.8	2,493.2	10.8	10.0	117.81	-272.4	434.9	480.7	461.6	19.08	25.195			
2,700.0	2,631.4	2,647.6	2,588.4	11.3	10.5	117.85	-283.4	455.0	501.3	481.4	19.91	25.173			
2,800.0	2,728.3	2,745.5	2,683.5	11.8	10.9	117.88	-294.3	475.0	521.9	501.1	20.75	25.154			
2,900.0	2,825.2	2,843.3	2,778.7	12.2	11.4	117.92	-305.3	495.0	542.5	520.9	21.58	25.135			
3,000.0	2,922.0	2,941.2	2,873.8	12.7	11.8	117.95	-316.2	515.0	563.1	540.7	22.42	25.118			
3,100.0	3,018.9	3,039.0	2,969.0	13.2	12.2	117.98	-327.2	535.0	583.7	560.5	23.25	25.102			
3,200.0	3,115.7	3,136.9	3,064.1	13.7	12.7	118.00	-338.2	555.1	604.3	580.3	24.09	25.087			
3,300.0	3,212.6	3,234.7	3,159.3	14.2	13.1	118.03	-349.1	575.1	625.0	600.0	24.93	25.073			
3,400.0	3,309.4	3,332.6	3,254.4	14.6	13.6	118.05	-360.1	595.1	645.6	619.8	25.76	25.060			
3,500.0	3,406.3	3,430.4	3,349.6	15.1	14.0	118.07	-371.0	615.1	666.2	639.6	26.60	25.048			
3,600.0	3,503.1	3,528.3	3,444.7	15.6	14.4	118.09	-382.0	635.1	686.8	659.4	27.43	25.036			
3,700.0	3,600.0	3,626.1	3,539.9	16.1	14.9	118.11	-393.0	655.2	707.4	679.2	28.27	25.025			
3,800.0	3,696.9	3,724.0	3,635.0	16.5	15.3	118.13	-403.9	675.2	728.0	698.9	29.10	25.015			
3,900.0	3,793.7	3,821.8	3,730.2	17.0	15.8	118.15	-414.9	695.2	748.7	718.7	29.94	25.005			
4,000.0	3,890.6	3,919.7	3,825.4	17.5	16.2	118.16	-425.8	715.2	769.3	738.5	30.78	24.996			
4,100.0	3,987.4	4,017.5	3,920.5	18.0	16.6	118.18	-436.8	735.2	789.9	758.3	31.61	24.987			
4,200.0	4,084.3	4,115.4	4,015.7	18.5	17.1	118.19	-447.8	755.3	810.5	778.1	32.45	24.978 SF			

CC - Min centre to center distance or convergent point, SF - min separation factor, ES - min ellipse separation

Cathedral Energy Services

Anticollision Report

Company:	EnCana Oil & Gas (USA) Inc	Local Co-ordinate Reference:	Well Benjamin Fee 28-9B
Project:	Mamm Creek	TVD Reference:	WELL @ 5965.0ft (Original Well Elev)
Reference Site:	K28NW Pad	MD Reference:	WELL @ 5965.0ft (Original Well Elev)
Site Error:	0.0ft	North Reference:	True
Reference Well:	Benjamin Fee 28-9B	Survey Calculation Method:	Minimum Curvature
Well Error:	0.0ft	Output errors are at	2.00 sigma
Reference Wellbore	DD	Database:	EDM 5000.1 US Multi Users DB
Reference Design:	Plan #2	Offset TVD Reference:	Offset Datum

Offset Design													Offset Site Error:	0.0 ft	
Survey Program: 0-MWD													Offset Well Error:		0.0 ft
Reference				Offset		Semi Major Axis			Distance				Total Uncertainty Axis	Separation Factor	Warning
Measured Depth (ft)	Vertical Depth (ft)	Measured Depth (ft)	Vertical Depth (ft)	Reference (ft)	Offset (ft)	Highside Toolface (°)	Offset Wellbore Centre +N/-S (ft)	+E/-W (ft)	Between Centres (ft)	Between Ellipses (ft)					
0.0	0.0	0.0	0.0	0.0	0.0	0.00	16.8	0.0	16.8						
100.0	100.0	100.0	100.0	0.1	0.1	0.00	16.8	0.0	16.8	16.5	0.27	61.538			
200.0	200.0	200.0	200.0	0.3	0.3	0.00	16.8	0.0	16.8	16.1	0.62	26.966 CC, ES			
300.0	300.0	299.1	299.1	0.5	0.5	-79.68	18.9	-1.4	18.4	17.4	0.98	18.779 SF			
400.0	399.6	397.3	396.9	0.7	0.7	-102.33	25.4	-5.4	26.4	25.0	1.37	19.285			
500.0	498.8	493.6	492.5	1.0	1.0	-117.72	35.9	-11.9	43.7	41.9	1.80	24.234			
600.0	597.1	587.7	585.0	1.4	1.3	-125.57	50.0	-20.7	69.6	67.3	2.30	30.343			
680.2	675.2	663.6	659.5	1.7	1.6	-129.71	62.6	-28.6	94.6	91.8	2.73	34.617			
700.0	694.3	682.2	677.8	1.8	1.6	-130.71	65.7	-30.5	101.0	98.2	2.84	35.565			
800.0	791.2	776.4	770.1	2.3	2.0	-134.29	81.3	-40.3	134.0	130.6	3.40	39.422			
900.0	888.0	870.5	862.4	2.7	2.3	-136.45	97.0	-50.0	167.3	163.3	3.97	42.190			
1,000.0	984.9	964.7	954.7	3.2	2.7	-137.90	112.6	-59.8	200.7	196.2	4.54	44.258			
1,100.0	1,081.8	1,058.8	1,047.1	3.7	3.1	-138.93	128.2	-69.5	234.2	229.1	5.11	45.855			
1,200.0	1,178.6	1,153.0	1,139.4	4.1	3.4	-139.70	143.9	-79.3	267.8	262.1	5.68	47.124			
1,300.0	1,275.5	1,247.1	1,231.7	4.6	3.8	-140.31	159.5	-89.0	301.4	295.1	6.26	48.155			
1,400.0	1,372.3	1,341.3	1,324.1	5.1	4.1	-140.79	175.1	-98.8	335.0	328.1	6.84	49.009			
1,500.0	1,469.2	1,435.4	1,416.4	5.6	4.5	-141.18	190.8	-108.5	368.6	361.2	7.41	49.727			
1,600.0	1,566.0	1,529.6	1,508.7	6.0	4.9	-141.51	206.4	-118.3	402.2	394.3	7.99	50.339			
1,700.0	1,662.9	1,623.7	1,601.0	6.5	5.2	-141.79	222.0	-128.0	435.9	427.3	8.57	50.866			
1,800.0	1,759.7	1,717.9	1,693.4	7.0	5.6	-142.03	237.7	-137.8	469.6	460.4	9.15	51.326			
1,900.0	1,856.6	1,812.0	1,785.7	7.5	5.9	-142.23	253.3	-147.5	503.2	493.5	9.73	51.730			
2,000.0	1,953.5	1,906.2	1,878.0	7.9	6.3	-142.41	269.0	-157.3	536.9	526.6	10.31	52.087			
2,100.0	2,050.3	2,000.3	1,970.4	8.4	6.7	-142.57	284.6	-167.0	570.6	559.7	10.89	52.406			
2,200.0	2,147.2	2,094.5	2,062.7	8.9	7.0	-142.71	300.2	-176.8	604.2	592.8	11.47	52.692			
2,300.0	2,244.0	2,188.6	2,155.0	9.4	7.4	-142.84	315.9	-186.5	637.9	625.9	12.05	52.950			
2,400.0	2,340.9	2,282.8	2,247.3	9.9	7.7	-142.95	331.5	-196.3	671.6	659.0	12.63	53.184			
2,500.0	2,437.7	2,376.9	2,339.7	10.3	8.1	-143.05	347.1	-206.1	705.3	692.1	13.21	53.397			
2,600.0	2,534.6	2,471.1	2,432.0	10.8	8.5	-143.15	362.8	-215.8	739.0	725.2	13.79	53.592			
2,700.0	2,631.4	2,565.2	2,524.3	11.3	8.8	-143.23	378.4	-225.6	772.7	758.3	14.37	53.771			
2,800.0	2,728.3	2,659.4	2,616.7	11.8	9.2	-143.31	394.0	-235.3	806.3	791.4	14.95	53.936			

CC - Min centre to center distance or covergent point, SF - min separation factor, ES - min ellipse separation

Cathedral Energy Services

Anticollision Report

Company:	EnCana Oil & Gas (USA) Inc	Local Co-ordinate Reference:	Well Benjamin Fee 28-9B
Project:	Mamm Creek	TVD Reference:	WELL @ 5965.0ft (Original Well Elev)
Reference Site:	K28NW Pad	MD Reference:	WELL @ 5965.0ft (Original Well Elev)
Site Error:	0.0ft	North Reference:	True
Reference Well:	Benjamin Fee 28-9B	Survey Calculation Method:	Minimum Curvature
Well Error:	0.0ft	Output errors are at	2.00 sigma
Reference Wellbore	DD	Database:	EDM 5000.1 US Multi Users DB
Reference Design:	Plan #2	Offset TVD Reference:	Offset Datum

Offset Design													Offset Site Error:	0.0 ft	
Survey Program: 0-MWD													Offset Well Error:		0.0 ft
Reference				Offset		Semi Major Axis			Distance				Separation Factor	Warning	
Measured Depth (ft)	Vertical Depth (ft)	Measured Depth (ft)	Vertical Depth (ft)	Reference (ft)	Offset (ft)	Highside Toolface (°)	Offset Wellbore Centre +N/-S (ft)	+E/-W (ft)	Between Centres (ft)	Between Ellipses (ft)	Total Uncertainty Axis				
0.0	0.0	0.0	0.0	0.0	0.0	-103.28	-25.5	-108.0	111.0						
100.0	100.0	100.0	100.0	0.1	0.1	-103.28	-25.5	-108.0	111.0	110.7	0.27	407.532			
200.0	200.0	200.0	200.0	0.3	0.3	-103.28	-25.5	-108.0	111.0	110.3	0.62	178.582 CC, ES			
300.0	300.0	300.0	300.0	0.5	0.5	-171.37	-25.5	-108.0	113.5	112.6	0.97	117.088			
400.0	399.6	399.6	399.6	0.7	0.7	-171.90	-25.5	-108.0	121.3	120.0	1.32	92.163			
500.0	498.8	505.9	505.8	1.0	0.9	-173.02	-25.5	-105.1	131.6	129.9	1.67	78.702			
600.0	597.1	610.2	609.8	1.4	1.1	-174.98	-25.9	-96.7	142.2	140.1	2.02	70.220			
680.2	675.2	690.8	689.9	1.7	1.3	-177.64	-28.9	-87.8	153.1	150.8	2.31	66.184			
700.0	694.3	710.6	709.4	1.8	1.3	-178.43	-30.1	-85.3	156.2	153.8	2.39	65.275			
800.0	791.2	809.9	807.4	2.3	1.6	176.99	-38.6	-71.4	171.6	168.7	2.84	60.507			
900.0	888.0	907.9	903.2	2.7	2.0	171.67	-51.3	-55.1	187.6	184.2	3.40	55.249			
1,000.0	984.9	1,004.1	996.2	3.2	2.4	165.92	-67.8	-36.6	205.3	201.2	4.11	49.941			
1,100.0	1,081.8	1,098.1	1,085.7	3.7	2.9	160.01	-87.8	-16.2	225.5	220.5	4.99	45.229			
1,200.0	1,178.6	1,189.5	1,171.3	4.1	3.5	154.19	-110.9	5.7	249.1	243.1	6.00	41.523			
1,300.0	1,275.5	1,278.0	1,252.7	4.6	4.1	148.66	-136.6	28.9	276.5	269.4	7.10	38.932			
1,400.0	1,372.3	1,367.5	1,333.8	5.1	4.8	143.46	-165.1	53.9	307.6	299.4	8.23	37.371			
1,500.0	1,469.2	1,458.6	1,416.2	5.6	5.5	139.06	-194.3	79.5	341.0	331.7	9.35	36.486			
1,600.0	1,566.0	1,549.6	1,498.6	6.0	6.2	135.42	-223.5	105.0	376.0	365.6	10.43	36.063			
1,700.0	1,662.9	1,640.7	1,581.0	6.5	6.9	132.38	-252.8	130.5	412.2	400.7	11.47	35.923 SF			
1,800.0	1,759.7	1,731.8	1,663.4	7.0	7.6	129.82	-282.0	156.0	449.2	436.7	12.49	35.958			
1,900.0	1,856.6	1,822.9	1,745.8	7.5	8.3	127.63	-311.2	181.6	486.9	473.4	13.49	36.100			
2,000.0	1,953.5	1,914.0	1,828.2	7.9	9.0	125.76	-340.4	207.1	525.1	510.7	14.46	36.308			
2,100.0	2,050.3	2,005.1	1,910.6	8.4	9.7	124.13	-369.7	232.6	563.8	548.4	15.42	36.554			
2,200.0	2,147.2	2,096.1	1,993.0	8.9	10.4	122.71	-398.9	258.2	602.8	586.5	16.37	36.821			
2,300.0	2,244.0	2,187.2	2,075.4	9.4	11.2	121.46	-428.1	283.7	642.1	624.8	17.31	37.099			
2,400.0	2,340.9	2,278.3	2,157.8	9.9	11.9	120.35	-457.3	309.2	681.7	663.4	18.24	37.379			
2,500.0	2,437.7	2,369.4	2,240.2	10.3	12.6	119.36	-486.6	334.8	721.4	702.2	19.16	37.657			
2,600.0	2,534.6	2,460.5	2,322.6	10.8	13.3	118.47	-515.8	360.3	761.3	741.2	20.07	37.929			
2,700.0	2,631.4	2,551.6	2,405.1	11.3	14.0	117.67	-545.0	385.8	801.3	780.3	20.98	38.195			

CC - Min centre to center distance or convergent point, SF - min separation factor, ES - min ellipse separation

Cathedral Energy Services

Anticollision Report

Company:	EnCana Oil & Gas (USA) Inc	Local Co-ordinate Reference:	Well Benjamin Fee 28-9B
Project:	Mamm Creek	TVD Reference:	WELL @ 5965.0ft (Original Well Elev)
Reference Site:	K28NW Pad	MD Reference:	WELL @ 5965.0ft (Original Well Elev)
Site Error:	0.0ft	North Reference:	True
Reference Well:	Benjamin Fee 28-9B	Survey Calculation Method:	Minimum Curvature
Well Error:	0.0ft	Output errors are at	2.00 sigma
Reference Wellbore	DD	Database:	EDM 5000.1 US Multi Users DB
Reference Design:	Plan #2	Offset TVD Reference:	Offset Datum

Offset Design													Offset Site Error:	0.0 ft		
Survey Program: 140-MWD													Offset Well Error:		0.0 ft	
Reference													Distance		Warning	
Measured Depth (ft)	Vertical Depth (ft)	Measured Depth (ft)	Vertical Depth (ft)	Reference (ft)	Offset (ft)	Highside Toolface (°)	Offset Wellbore Centre +N/-S (ft)	+E/-W (ft)	Between Centres (ft)	Between Ellipses (ft)	Total Uncertainty Axis	Separation Factor				
0.0	0.0	0.0	0.0	0.0	0.0	-126.23	-79.1	-108.0	133.9							
100.0	100.0	102.5	102.5	0.1	0.2	-126.02	-78.2	-107.5	132.9	132.6	0.29	458.841				
200.0	200.0	205.1	205.0	0.3	0.3	-125.53	-75.5	-105.8	130.1	129.4	0.64	202.975				
300.0	300.0	310.4	310.2	0.5	0.6	167.18	-71.5	-101.3	127.0	126.0	0.99	128.093				
400.0	399.6	413.7	413.0	0.7	0.8	168.15	-65.7	-93.4	125.1	123.8	1.35	92.958				
413.7	413.3	427.8	427.0	0.8	0.8	168.31	-64.8	-92.2	125.1	123.7	1.40	89.604	CC, ES			
500.0	498.8	515.9	514.5	1.0	1.1	170.10	-57.7	-84.5	126.4	124.7	1.71	74.115				
600.0	597.1	620.2	617.7	1.4	1.4	172.98	-47.0	-73.6	130.2	128.2	2.07	62.866				
680.2	675.2	702.6	698.8	1.7	1.7	175.50	-37.1	-63.3	135.2	132.8	2.37	57.028				
700.0	694.3	723.1	718.9	1.8	1.8	176.18	-34.4	-60.6	136.6	134.2	2.45	55.721				
800.0	791.2	826.4	820.0	2.3	2.2	-179.90	-18.5	-46.2	142.5	139.6	2.89	49.339				
900.0	888.0	929.2	919.8	2.7	2.7	-175.52	0.2	-30.0	146.4	143.0	3.41	42.978				
1,000.0	984.9	1,032.7	1,019.4	3.2	3.2	-170.45	21.7	-12.2	148.9	144.9	4.06	36.707				
1,100.0	1,081.8	1,135.7	1,117.5	3.7	3.8	-164.88	45.4	8.2	149.5	144.6	4.89	30.589				
1,200.0	1,178.6	1,237.7	1,213.8	4.1	4.5	-158.76	70.7	30.4	149.3	143.4	5.93	25.185				
1,300.0	1,275.5	1,339.4	1,309.2	4.6	5.1	-152.30	98.8	54.6	148.7	141.6	7.17	20.758				
1,324.0	1,298.7	1,362.8	1,331.0	4.7	5.3	-150.77	102.8	60.3	148.6	141.2	7.48	19.882				
1,400.0	1,372.3	1,435.4	1,399.0	5.1	5.7	-146.14	121.5	77.6	149.8	141.3	8.47	17.678				
1,500.0	1,469.2	1,534.5	1,492.1	5.6	6.3	-140.23	146.8	100.1	153.8	144.0	9.87	15.584				
1,600.0	1,566.0	1,635.3	1,586.5	6.0	7.0	-134.34	172.5	124.4	158.2	146.8	11.34	13.943				
1,700.0	1,662.9	1,732.3	1,677.3	6.5	7.6	-129.07	197.1	147.7	164.0	151.3	12.75	12.863				
1,800.0	1,759.7	1,829.8	1,769.0	7.0	8.2	-124.42	221.7	170.1	172.0	157.9	14.10	12.198				
1,900.0	1,856.6	1,929.5	1,862.8	7.5	8.9	-120.12	246.9	192.8	181.4	166.0	15.45	11.741				
2,000.0	1,953.5	2,029.7	1,956.3	7.9	9.5	-115.70	272.9	217.5	190.7	173.9	16.80	11.349				
2,100.0	2,050.3	2,127.7	2,047.9	8.4	10.2	-111.78	298.3	241.7	200.8	182.8	18.06	11.122				
2,200.0	2,147.2	2,226.3	2,140.0	8.9	10.8	-108.27	323.7	265.9	211.9	192.7	19.26	11.002				
2,300.0	2,244.0	2,323.8	2,231.2	9.4	11.4	-105.24	348.9	289.5	224.0	203.6	20.37	10.996				
2,400.0	2,340.9	2,421.2	2,322.9	9.9	12.0	-102.95	373.5	311.4	237.1	215.6	21.41	11.071				
2,500.0	2,437.7	2,520.2	2,416.5	10.3	12.6	-101.18	397.9	332.4	250.7	228.3	22.43	11.178				
2,600.0	2,534.6	2,619.7	2,510.8	10.8	13.2	-99.75	421.9	353.0	264.4	241.0	23.43	11.284				
2,700.0	2,631.4	2,719.8	2,605.8	11.3	13.8	-98.52	445.6	373.7	277.8	253.4	24.42	11.375				
2,800.0	2,728.3	2,818.2	2,699.2	11.8	14.4	-97.36	468.9	394.4	291.2	265.7	25.43	11.449				
2,900.0	2,825.2	2,915.7	2,791.1	12.2	15.0	-96.01	493.1	416.0	305.1	278.7	26.42	11.546				
3,000.0	2,922.0	3,015.4	2,885.0	12.7	15.6	-94.70	517.9	438.3	319.2	291.8	27.39	11.655				
3,100.0	3,018.9	3,115.5	2,979.7	13.2	16.2	-93.66	542.2	460.1	333.1	304.8	28.35	11.751				
3,200.0	3,115.7	3,220.6	3,079.2	13.7	16.9	-92.71	566.8	483.1	346.3	317.0	29.35	11.798				
3,300.0	3,212.6	3,325.7	3,178.6	14.2	17.5	-91.59	589.8	508.4	357.3	327.0	30.34	11.776				
3,400.0	3,309.4	3,426.0	3,273.4	14.6	18.1	-90.57	611.2	533.0	367.8	336.5	31.30	11.752				
3,500.0	3,406.3	3,526.0	3,368.2	15.1	18.7	-89.65	632.2	557.3	378.1	345.8	32.23	11.729				
3,600.0	3,503.1	3,625.2	3,462.2	15.6	19.3	-88.85	652.7	581.1	388.2	355.1	33.17	11.705				
3,700.0	3,600.0	3,723.6	3,555.6	16.1	19.9	-88.09	673.1	604.8	398.6	364.5	34.11	11.687				
3,800.0	3,696.9	3,821.5	3,648.2	16.5	20.5	-87.31	694.0	628.6	409.5	374.5	35.03	11.690				
3,900.0	3,793.7	3,925.4	3,746.3	17.0	21.1	-86.41	716.1	654.7	420.1	384.1	36.00	11.670				
4,000.0	3,890.6	4,028.8	3,843.7	17.5	21.7	-85.42	737.2	682.0	429.7	392.7	36.92	11.637				
4,100.0	3,987.4	4,130.6	3,939.8	18.0	22.4	-84.48	757.4	709.2	438.7	400.8	37.83	11.596				
4,200.0	4,084.3	4,231.7	4,035.3	18.5	23.0	-83.63	776.8	736.1	447.2	408.5	38.72	11.549				
4,300.0	4,181.1	4,331.8	4,130.0	18.9	23.6	-82.87	795.8	762.3	455.6	416.0	39.61	11.504				
4,400.0	4,278.0	4,434.5	4,227.4	19.4	24.2	-82.20	814.8	788.8	463.9	423.4	40.50	11.455				
4,500.0	4,374.8	4,539.6	4,327.5	19.9	24.7	-81.66	832.9	815.2	471.1	429.7	41.41	11.377				
4,600.0	4,471.7	4,640.7	4,424.1	20.4	25.3	-81.23	849.5	840.2	477.5	435.2	42.32	11.283				
4,700.0	4,568.6	4,740.8	4,519.6	20.9	25.9	-80.77	865.8	865.4	483.9	440.7	43.22	11.195				
4,800.0	4,665.4	4,847.6	4,621.4	21.3	26.4	-80.24	882.6	892.9	489.6	445.4	44.16	11.087				

CC - Min centre to center distance or convergent point, SF - min separation factor, ES - min ellipse separation

Cathedral Energy Services

Anticollision Report

Company:	EnCana Oil & Gas (USA) Inc	Local Co-ordinate Reference:	Well Benjamin Fee 28-9B
Project:	Mamm Creek	TVD Reference:	WELL @ 5965.0ft (Original Well Elev)
Reference Site:	K28NW Pad	MD Reference:	WELL @ 5965.0ft (Original Well Elev)
Site Error:	0.0ft	North Reference:	True
Reference Well:	Benjamin Fee 28-9B	Survey Calculation Method:	Minimum Curvature
Well Error:	0.0ft	Output errors are at	2.00 sigma
Reference Wellbore	DD	Database:	EDM 5000.1 US Multi Users DB
Reference Design:	Plan #2	Offset TVD Reference:	Offset Datum

Offset Design													Offset Site Error:	0.0 ft	
Survey Program: 140-MWD													Offset Well Error:		0.0 ft
Reference		Offset		Semi Major Axis			Distance				Total Uncertainty Axis	Separation Factor	Warning		
Measured Depth (ft)	Vertical Depth (ft)	Measured Depth (ft)	Vertical Depth (ft)	Reference (ft)	Offset (ft)	Highside Toolface (°)	Offset Wellbore Centre +N/-S (ft)	+E/-W (ft)	Between Centres (ft)	Between Ellipses (ft)					
4,900.0	4,762.3	4,954.1	4,722.8	21.8	27.0	-79.62	898.0	921.4	493.8	448.7	45.06	10.959			
5,000.0	4,859.1	5,057.1	4,821.2	22.3	27.6	-79.10	911.8	948.7	497.1	451.2	45.92	10.825			
5,100.0	4,956.0	5,160.1	4,919.9	22.8	28.1	-78.73	924.8	975.0	499.8	453.0	46.82	10.676			
5,200.0	5,052.8	5,263.0	5,018.7	23.2	28.6	-78.41	937.1	1,001.0	502.0	454.3	47.72	10.519			
5,300.0	5,149.7	5,366.8	5,118.6	23.7	29.1	-78.14	948.7	1,026.8	503.5	454.9	48.62	10.357			
5,400.0	5,246.5	5,471.6	5,219.9	24.2	29.6	-78.07	959.3	1,051.4	504.1	454.6	49.54	10.176			
5,500.0	5,343.4	5,574.5	5,319.8	24.7	30.0	-78.18	968.5	1,074.2	503.9	453.4	50.49	9.981			
5,600.0	5,440.3	5,676.7	5,419.3	25.2	30.4	-78.42	977.1	1,095.9	503.3	451.8	51.47	9.779			
5,700.0	5,537.1	5,787.3	5,527.5	25.6	30.8	-78.95	984.7	1,117.3	501.5	449.0	52.50	9.552			
5,800.0	5,634.0	5,891.6	5,630.2	26.1	31.1	-79.80	989.5	1,135.0	498.0	444.4	53.58	9.295			
5,900.0	5,730.8	5,995.4	5,732.6	26.6	31.4	-80.84	993.2	1,151.3	493.9	439.2	54.66	9.036			
6,000.0	5,827.7	6,099.1	5,835.4	27.1	31.6	-82.15	995.5	1,165.6	489.1	433.3	55.79	8.767			
6,020.2	5,847.2	6,120.0	5,856.0	27.2	31.7	-82.43	995.9	1,168.4	488.0	432.0	56.01	8.713			
6,100.0	5,924.8	6,200.1	5,935.5	27.5	31.9	-83.33	996.9	1,178.9	484.0	427.2	56.78	8.523			
6,200.0	6,022.7	6,300.2	6,034.8	27.9	32.1	-84.31	997.7	1,190.7	479.3	421.7	57.62	8.319			
6,300.0	6,121.2	6,400.3	6,134.4	28.2	32.3	-85.07	998.0	1,201.0	475.0	416.7	58.32	8.145			
6,400.0	6,220.3	6,500.3	6,234.0	28.5	32.4	-85.57	997.9	1,210.3	471.0	412.1	58.87	8.001			
6,500.0	6,319.8	6,602.1	6,335.5	28.7	32.5	-85.81	997.0	1,218.6	466.9	407.7	59.27	7.878			
6,600.0	6,419.5	6,701.9	6,435.0	28.8	32.6	-85.72	995.9	1,226.0	463.1	403.6	59.52	7.781			
6,700.0	6,519.5	6,801.7	6,534.5	28.9	32.7	-85.31	994.5	1,232.6	459.5	399.9	59.65	7.704			
6,740.5	6,560.0	6,842.1	6,574.9	28.9	32.8	-17.15	993.9	1,235.1	458.2	398.5	59.67	7.679			
6,800.0	6,619.5	6,901.5	6,634.1	29.0	32.8	-16.79	992.9	1,238.4	456.3	396.5	59.71	7.642			
6,900.0	6,719.5	7,001.3	6,733.8	29.0	32.9	-16.26	991.1	1,243.3	453.1	393.3	59.79	7.578			
7,000.0	6,819.5	7,101.0	6,833.4	29.1	33.0	-15.78	989.1	1,247.8	449.9	390.1	59.88	7.514			
7,100.0	6,919.5	7,200.7	6,933.0	29.2	33.2	-15.30	987.2	1,252.3	446.9	386.9	59.97	7.452			
7,200.0	7,019.5	7,300.4	7,032.5	29.3	33.3	-14.80	985.3	1,256.8	443.9	383.9	60.06	7.391			
7,300.0	7,119.5	7,400.1	7,132.1	29.3	33.4	-14.29	983.5	1,261.3	441.0	380.9	60.14	7.333			
7,400.0	7,219.5	7,499.8	7,231.7	29.4	33.5	-13.77	981.7	1,265.8	438.2	378.0	60.22	7.272			
7,500.0	7,319.5	7,600.1	7,331.9	29.5	33.6	-13.26	979.9	1,270.3	435.4	375.1	60.27	7.223			
7,600.0	7,419.5	7,700.4	7,432.1	29.6	33.6	-12.79	977.9	1,274.4	432.5	372.1	60.33	7.168			
7,700.0	7,519.5	7,800.8	7,532.4	29.6	33.7	-12.35	975.7	1,278.2	429.5	369.1	60.40	7.111			
7,800.0	7,619.5	7,901.2	7,632.7	29.7	33.8	-11.96	973.3	1,281.8	426.5	366.0	60.48	7.051			
7,900.0	7,719.5	8,001.6	7,733.0	29.8	33.9	-11.61	970.8	1,285.0	423.3	362.7	60.57	6.988			
8,000.0	7,819.5	8,102.0	7,833.3	29.9	33.9	-11.29	968.0	1,287.9	420.1	359.4	60.68	6.923			
8,100.0	7,919.5	8,203.9	7,935.1	30.0	33.9	-11.04	964.9	1,290.4	416.5	355.8	60.73	6.859			
8,200.0	8,019.5	8,305.7	8,036.9	30.1	33.9	-10.89	961.1	1,292.2	412.6	351.7	60.82	6.784			
8,300.0	8,119.5	8,407.6	8,138.7	30.1	33.9	-10.83	956.7	1,293.5	408.1	347.2	60.93	6.698			
8,400.0	8,219.5	8,509.4	8,240.4	30.2	33.9	-10.88	951.7	1,294.1	403.1	342.1	61.07	6.601			
8,500.0	8,319.5	8,611.2	8,342.0	30.3	33.9	-11.03	946.1	1,294.1	397.7	336.5	61.24	6.494			
8,600.0	8,419.5	8,712.9	8,443.5	30.4	33.9	-11.29	939.8	1,293.5	391.8	330.4	61.44	6.377			
8,700.0	8,519.5	8,813.9	8,544.3	30.5	33.9	-11.66	933.1	1,292.3	385.5	323.8	61.67	6.251			
8,761.2	8,580.7	8,850.4	8,580.7	30.5	33.9	-11.81	930.6	1,291.8	382.4	320.6	61.78	6.189 SF			
8,800.0	8,619.5	8,850.4	8,580.7	30.6	33.9	-11.81	930.6	1,291.8	384.3	322.5	61.81	6.217			
8,900.0	8,719.5	8,850.4	8,580.7	30.7	33.9	-11.81	930.6	1,291.8	406.8	344.9	61.90	6.571			
9,000.0	8,819.5	8,850.4	8,580.7	30.7	33.9	-11.81	930.6	1,291.8	450.8	388.8	61.99	7.271			
9,100.0	8,919.5	8,850.4	8,580.7	30.8	33.9	-11.81	930.6	1,291.8	510.8	448.8	62.08	8.228			
9,200.0	9,019.5	8,850.4	8,580.7	30.9	33.9	-11.81	930.6	1,291.8	582.0	519.8	62.18	9.361			
9,300.0	9,119.5	8,850.4	8,580.7	31.0	33.9	-11.81	930.6	1,291.8	660.7	598.4	62.27	10.610			
9,400.0	9,219.5	8,850.4	8,580.7	31.1	33.9	-11.81	930.6	1,291.8	744.5	682.1	62.36	11.938			

CC - Min centre to center distance or convergent point, SF - min separation factor, ES - min ellipse separation

Cathedral Energy Services

Anticollision Report

Company:	EnCana Oil & Gas (USA) Inc	Local Co-ordinate Reference:	Well Benjamin Fee 28-9B
Project:	Mamm Creek	TVD Reference:	WELL @ 5965.0ft (Original Well Elev)
Reference Site:	K28NW Pad	MD Reference:	WELL @ 5965.0ft (Original Well Elev)
Site Error:	0.0ft	North Reference:	True
Reference Well:	Benjamin Fee 28-9B	Survey Calculation Method:	Minimum Curvature
Well Error:	0.0ft	Output errors are at	2.00 sigma
Reference Wellbore	DD	Database:	EDM 5000.1 US Multi Users DB
Reference Design:	Plan #2	Offset TVD Reference:	Offset Datum

Offset Design													Offset Site Error:	0.0 ft		
Survey Program: 270-MWD													K28NW Pad - GMU 28-14D Existing - Schlumberger Surveys - Schlumberger Surveys		Offset Well Error:	0.0 ft
Reference		Offset		Semi Major Axis			Distance				Total Uncertainty Axis	Separation Factor	Warning			
Measured Depth (ft)	Vertical Depth (ft)	Measured Depth (ft)	Vertical Depth (ft)	Reference (ft)	Offset (ft)	Highside Toolface (°)	Offset Wellbore Centre +N/-S (ft)	+E/-W (ft)	Between Centres (ft)	Between Ellipses (ft)						
0.0	0.0	0.0	0.0	0.0	0.0	-132.95	-116.6	-125.2	171.1							
100.0	100.0	100.1	100.1	0.1	0.2	-132.93	-116.5	-125.2	171.0	170.8	0.30	576.494				
200.0	200.0	200.3	200.3	0.3	0.3	-132.89	-116.3	-125.2	170.9	170.3	0.63	270.521				
203.6	203.6	203.9	203.9	0.3	0.3	159.21	-116.3	-125.2	170.9	170.3	0.64	265.313	CC, ES			
300.0	300.0	300.1	300.1	0.5	0.5	159.55	-116.1	-125.2	173.2	172.2	0.97	178.347				
400.0	399.6	398.0	397.9	0.7	0.7	160.25	-116.4	-125.2	180.8	179.5	1.32	137.075				
500.0	498.8	494.2	494.2	1.0	0.8	161.39	-117.5	-126.5	194.9	193.2	1.67	116.882				
600.0	597.1	590.1	590.0	1.4	1.0	162.59	-119.6	-128.2	215.0	213.0	2.02	106.522				
680.2	675.2	664.4	664.2	1.7	1.1	163.31	-122.6	-129.5	235.5	233.2	2.30	102.534				
700.0	694.3	682.1	681.9	1.8	1.2	163.51	-123.5	-129.9	241.2	238.8	2.37	101.884				
800.0	791.2	772.3	771.9	2.3	1.3	164.31	-129.2	-132.7	271.2	268.5	2.72	99.582				
900.0	888.0	863.8	863.1	2.7	1.5	164.93	-135.9	-136.5	302.7	299.6	3.08	98.229				
1,000.0	984.9	950.9	949.8	3.2	1.7	165.53	-142.4	-141.4	335.5	332.1	3.43	97.835	SF			
1,100.0	1,081.8	1,032.4	1,030.6	3.7	1.9	165.96	-150.3	-148.0	371.3	367.5	3.77	98.541				
1,200.0	1,178.6	1,106.0	1,103.3	4.1	2.2	166.25	-158.9	-155.7	410.2	406.1	4.09	100.230				
1,300.0	1,275.5	1,188.3	1,184.1	4.6	2.4	166.46	-170.4	-166.2	452.1	447.7	4.44	101.926				
1,400.0	1,372.3	1,269.1	1,263.0	5.1	2.8	166.55	-183.5	-178.0	496.4	491.6	4.78	103.806				
1,500.0	1,469.2	1,347.6	1,339.2	5.6	3.1	166.47	-198.1	-189.8	542.3	537.2	5.13	105.609				
1,600.0	1,566.0	1,424.4	1,413.3	6.0	3.4	166.26	-214.2	-201.9	590.0	584.5	5.49	107.451				
1,700.0	1,662.9	1,500.2	1,486.1	6.5	3.8	166.11	-230.7	-215.1	639.3	633.5	5.84	109.473				
1,800.0	1,759.7	1,581.4	1,563.8	7.0	4.2	166.03	-248.5	-230.7	690.0	683.8	6.19	111.408				
1,900.0	1,856.6	1,671.0	1,649.6	7.5	4.7	166.03	-267.5	-248.2	740.6	734.1	6.56	112.942				
2,000.0	1,953.5	1,757.2	1,732.2	7.9	5.1	166.08	-285.0	-265.2	790.9	784.0	6.91	114.397				

CC - Min centre to center distance or convergent point, SF - min separation factor, ES - min ellipse separation

Cathedral Energy Services

Anticollision Report

Company:	EnCana Oil & Gas (USA) Inc	Local Co-ordinate Reference:	Well Benjamin Fee 28-9B
Project:	Mamm Creek	TVD Reference:	WELL @ 5965.0ft (Original Well Elev)
Reference Site:	K28NW Pad	MD Reference:	WELL @ 5965.0ft (Original Well Elev)
Site Error:	0.0ft	North Reference:	True
Reference Well:	Benjamin Fee 28-9B	Survey Calculation Method:	Minimum Curvature
Well Error:	0.0ft	Output errors are at	2.00 sigma
Reference Wellbore	DD	Database:	EDM 5000.1 US Multi Users DB
Reference Design:	Plan #2	Offset TVD Reference:	Offset Datum

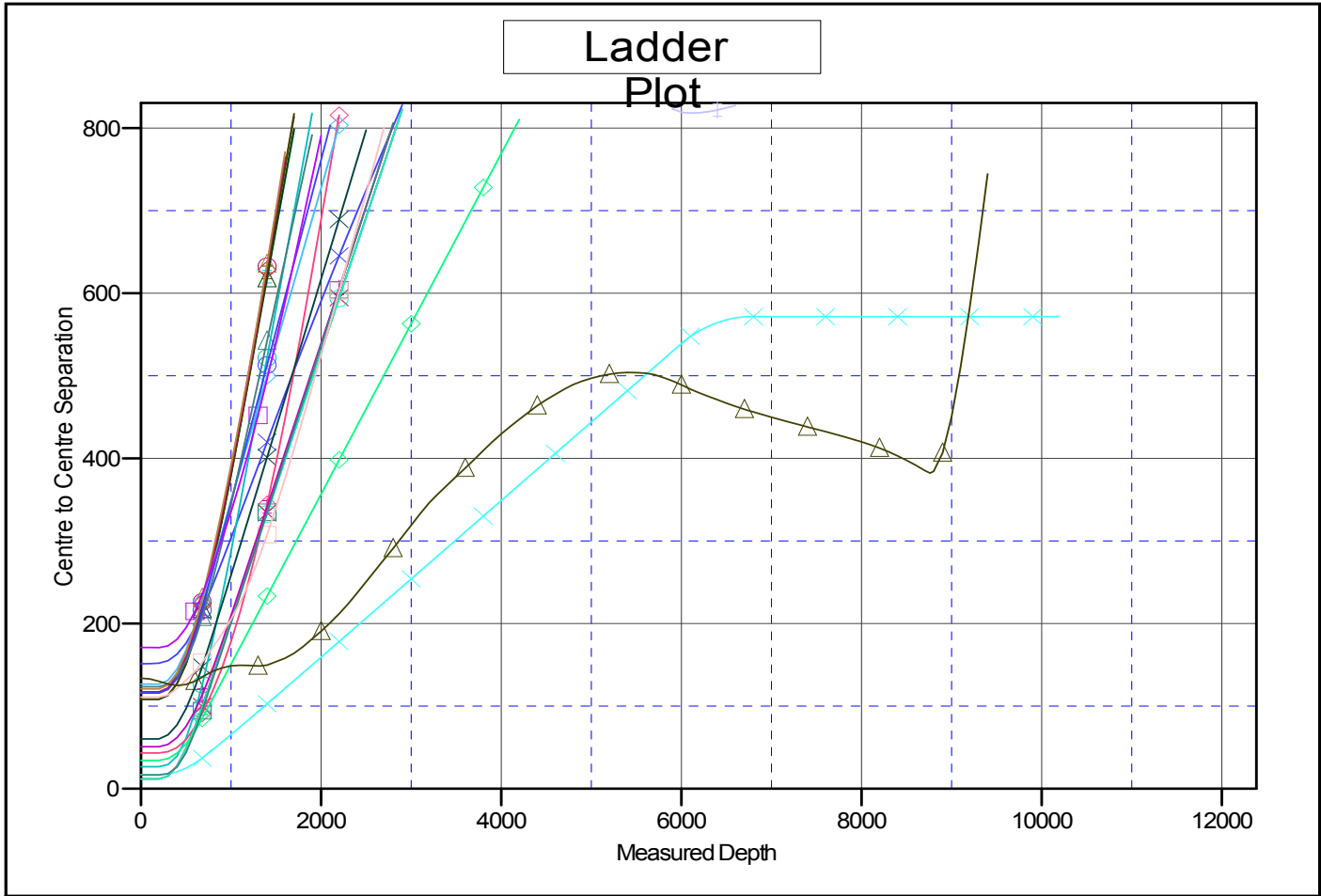
Offset Design													Offset Site Error:	0.0 ft		
Survey Program: 348-MWD													SWSW S27-T6S-R93W (M27NW Pad) - GMR 28-10D (M27NW) Existing - DD - DD		Offset Well Error:	0.0 ft
Reference		Offset		Semi Major Axis			Distance						Warning			
Measured Depth (ft)	Vertical Depth (ft)	Measured Depth (ft)	Vertical Depth (ft)	Reference (ft)	Offset (ft)	Highside Toolface (°)	Offset Wellbore Centre +N/-S (ft)	+E/-W (ft)	Between Centres (ft)	Between Ellipses (ft)	Total Uncertainty Axis	Separation Factor				
5,900.0	5,730.8	6,724.1	6,331.3	26.6	40.5	98.53	-282.7	1,465.1	823.4	759.0	64.35	12.794				
6,000.0	5,827.7	6,809.4	6,415.2	27.1	40.8	100.90	-279.2	1,450.4	819.4	753.9	65.43	12.523				
6,020.2	5,847.2	6,824.5	6,430.1	27.2	40.9	101.31	-278.7	1,447.8	818.9	753.3	65.62	12.480				
6,100.0	5,924.8	6,891.5	6,496.1	27.5	41.1	103.08	-276.8	1,436.8	818.2	751.9	66.37	12.329				
6,109.7	5,934.3	6,899.9	6,504.4	27.5	41.1	103.30	-276.6	1,435.4	818.2	751.8	66.45	12.314 CC				
6,200.0	6,022.7	6,982.7	6,586.1	27.9	41.4	105.33	-274.7	1,421.9	818.6	751.4	67.20	12.183 ES				
6,300.0	6,121.2	7,070.9	6,673.2	28.2	41.6	107.28	-273.1	1,408.2	820.0	752.1	67.85	12.085				
6,400.0	6,220.3	7,162.3	6,763.8	28.5	41.9	109.00	-271.9	1,395.7	821.9	753.5	68.37	12.022				
6,500.0	6,319.8	7,246.3	6,847.1	28.7	42.1	110.31	-271.8	1,385.4	824.7	756.0	68.75	11.996				
6,600.0	6,419.5	7,343.9	6,944.1	28.8	42.3	111.54	-272.3	1,374.5	827.3	758.3	69.07	11.979 SF				

Cathedral Energy Services

Anticollision Report

Company: EnCana Oil & Gas (USA) Inc	Local Co-ordinate Reference: Well Benjamin Fee 28-9B	
Project: Mamm Creek	TVD Reference: WELL @ 5965.0ft (Original Well Elev)	
Reference Site: K28NW Pad	MD Reference: WELL @ 5965.0ft (Original Well Elev)	
Site Error: 0.0ft	North Reference: True	
Reference Well: Benjamin Fee 28-9B	Survey Calculation Method: Minimum Curvature	
Well Error: 0.0ft	Output errors are at 2.00 sigma	
Reference Wellbore DD	Database: EDM 5000.1 US Multi Users DB	
Reference Design: Plan #2	Offset TVD Reference: Offset Datum	

Reference Depths are relative to WELL @ 5965.0ft (Original Well Elev) Coordinates are relative to: Benjamin Fee 28-9B
 Offset Depths are relative to Offset Datum Coordinate System is US State Plane 1983, Colorado Central Zone
 Central Meridian is -105.500000 ° Grid Convergence at Surface is: -1.44°



LEGEND

Existing, Existing V0	✱ Benjamin Federal 28-14B1, DD, Plan #2 V0	⊕ Benjamin Fee 28-11B, DD, Plan #2 V0
2, DD, Plan #2 V0	⊕ Benjamin Federal 28-14B2, DD, Plan #2 V0	⊕ Benjamin Fee 28-15A, DD, Plan #2 V0
1, DD, Plan #2 V0	⊕ Benjamin Federal 28-14C, DD, Plan #2 V0	⊕ Benjamin Fee 28-6C, DD, Plan #2 V0
2, DD, Plan #2 V0	✱ Benjamin Federal 28-16C, DD, Plan #2 V0	⊕ Benjamin Fee 33-1B, DD, Plan #2 V0
1, DD, Plan #2 V0	⊕ Benjamin Federal 33-3B, DD, Plan #2 V0	⊕ GMR 28-7D Existing, DD, Schlumberger
2, DD, Plan #2 V0	⊕ Benjamin Federal 33-4B, DD, Plan #2 V0	⊕ GMU 28-14D Existing, Schlumberger St
1, DD, Plan #2 V0	✱ Benjamin Fee 28-10D2, DD, Plan #2 V0	⊕ GMR 28-10D (M27NW) Existing, DD, DC
2, DD, Plan #2 V0	✱ Benjamin Fee 28-11A, DD, Plan #2 V0	

CC - Min centre to center distance or convergent point, SF - min separation factor, ES - min ellipse separation