

T5S, R95W, 6th P.M.

Encana OIL & GAS (USA) INC.

Well location, N. PARACHUTE EF14E-27 P27 595
595, located as shown in the SE 1/4 SE 1/4
of Section 27, T5S, R95W, 6th P.M., Garfield
County, Colorado.

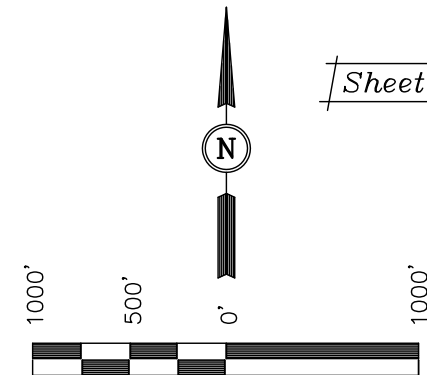
BASIS OF ELEVATION

SPOT ELEVATION AT THE NORTHWEST CORNER OF SECTION
30, T5S, R95W, 6th P.M. TAKEN FROM THE FORKED GULCH
QUADRANGLE, COLORADO, GARFIELD COUNTY, 7.5 MINUTE
SERIES (TOPOGRAPHICAL MAP) PUBLISHED BY THE UNITED
STATES DEPARTMENT OF THE INTERIOR, GEOLOGICAL SURVEY.
SAID ELEVATION IS MARKED AS BEING 5966 FEET.

BASIS OF BEARINGS

BASIS OF BEARINGS IS A G.P.S. OBSERVATION.

Sheet 1qq of 10



SCALE
CERTIFICATE

THIS IS TO CERTIFY THAT THE ABOVE PLAT WAS PREPARED AND
LOCATION AS SHOWN WAS STAKED ON THE GROUND FROM FIELD
NOTES OF ACTUAL SURVEYS MADE BY ME OR UNDER MY
SUPERVISION AND THAT THE SAME ARE TRUE AND CORRECT TO
THE BEST OF MY KNOWLEDGE AND BELIEF.

REGISTERED LAND SURVEYOR
REGISTRATION NO. 17492
STATE OF COLORADO

Revised: 11-05-10 D.R.B.
Revised: 09-15-10 D.R.B.

UINTAH ENGINEERING & LAND SURVEYING
85 SOUTH 200 EAST - VERNAL, UTAH 84078
(435) 789-1017

1" = 1000'

DATE SURVEYED:
11-01-08

DATE DRAWN:
12-03-08

B.H. S.K. D.R.B.

REFERENCES
G.L.O. PLAT

WEATHER
COOL

FILE
Encana OIL & GAS (USA) INC.

S89°36'45"W - 5269.81' (Meas.)

1916 Brass Cap
1.2' High
Lat: 39.592106°
Long: 108.031260°

N00°01'07"W - 2647.81' (Meas.)

1916 Brass Cap
1.2' High
Lat: 39.584839°
Long: 108.031265°

N00°22'55"W - 2645.47' (Meas.)

1916 Brass Cap
1.0' High, N-S
Fenceline
Lat: 39.39.577578°
Long: 108.031210°

NOTE:
SEE ADDENDUM FOR EXISTING
IMPROVEMENT WITHIN 400' OF THE
PROPOSED WELL DISTURBANCE.

N. PARACHUTE
EF14E-27 P27 595

Elev. Graded Ground = 6650'

S84°26'11"W
2708.20'

1916 Brass Cap
1.2' High
Lat: 39.577570°
Long: 108.040550°

S89°54'43"W - 2639.14' (Meas.)

1916 Brass Cap
1.5' High
Lat: 39.576667°
Long: 108.049907°

True
Position

TARGET
BOTTOM
HOLE

508'

569'

656'

LEGEND:

└─┘ = 90° SYMBOL

● = PROPOSED WELL HEAD.

▲ = SECTION CORNERS LOCATED.

PDOP = 2.7

NAD 83 (TARGET BOTTOM HOLE)	NAD 83 (SURFACE LOCATION)
LATITUDE = 39°34'43.18" (39.578661)	LATITUDE = 39°34'45.75" (39.579375)
LONGITUDE = 108°02'34.09" (108.042803)	LONGITUDE = 108°01'59.68" (108.033244)
NAD 27 (TARGET BOTTOM HOLE)	NAD 27 (SURFACE LOCATION)
LATITUDE = 39°34'43.26" (39.578683)	LATITUDE = 39°34'45.84" (39.579400)
LONGITUDE = 108°02'31.82" (108.042172)	LONGITUDE = 108°01'57.41" (108.032614)