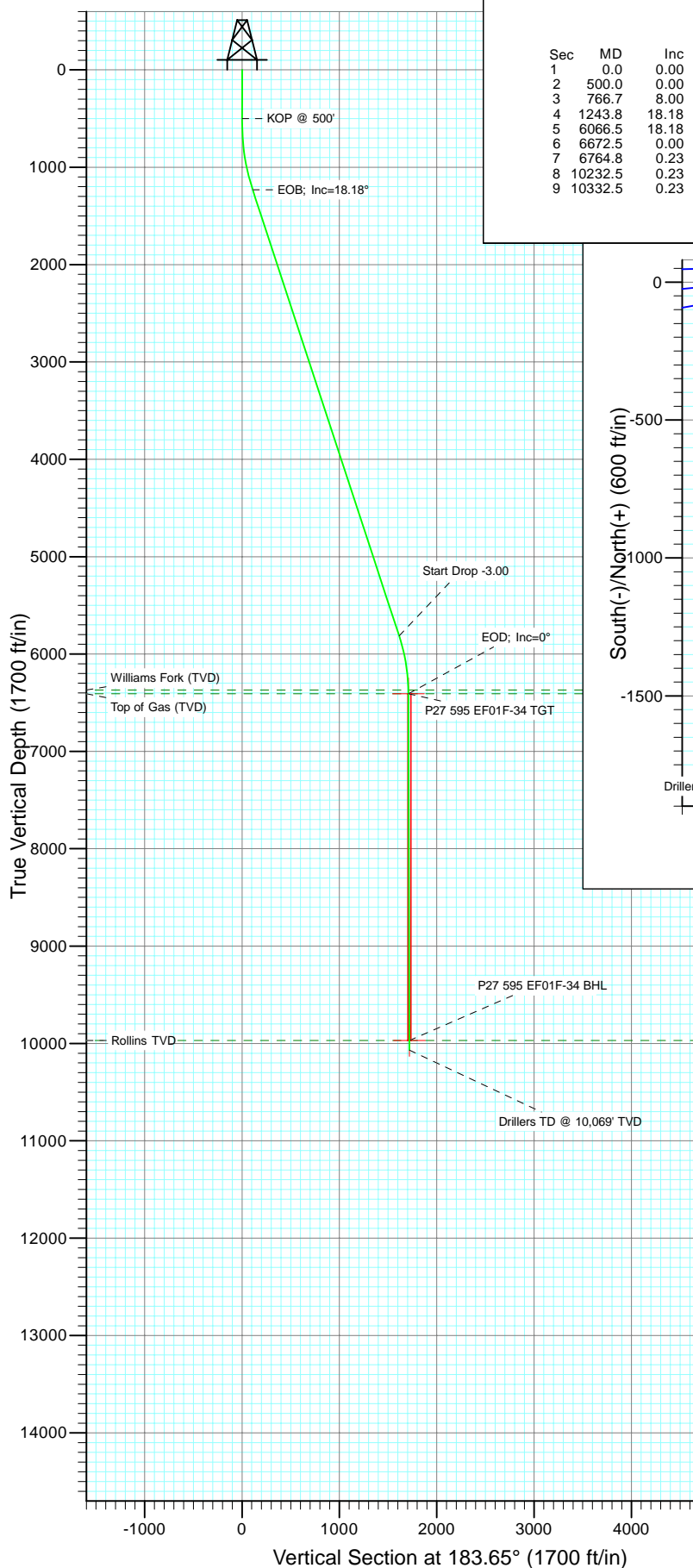


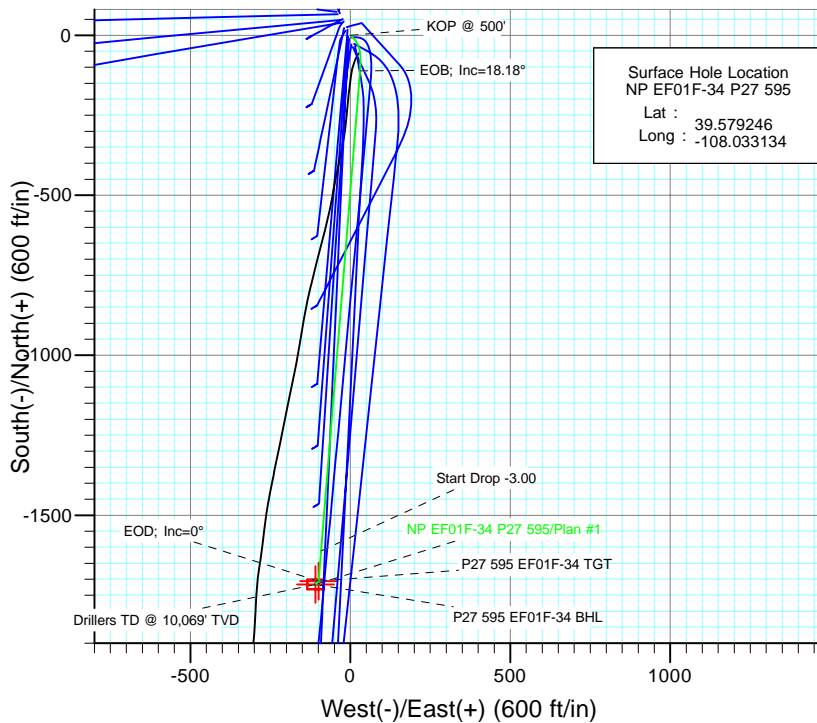


Project: North Piceance  
 Site: P27 595 (S27-T5S-R95W)  
 Well: NP EF01F-34 P27 595  
 Wellbore: DD  
 Design: Plan #1

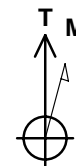


#### SECTION DETAILS

Sec	MD	Inc	Azi	TVD	+N/-S	+E/-W	Dleg	TFace	VSect	Target
1	0.0	0.00	0.00	0.0	0.0	0.0	0.00	0.00	0.0	
2	500.0	0.00	0.00	500.0	0.0	0.0	0.00	0.00	0.0	
3	766.7	8.00	135.00	765.8	-13.1	13.1	3.00	135.00	12.3	
4	1243.8	18.18	184.65	1231.1	-111.3	30.7	3.00	74.09	109.1	
5	6066.5	18.18	184.65	5813.2	-1610.9	-91.4	0.00	0.00	1613.4	
6	6672.5	0.00	0.00	6409.0	-1705.9	-99.1	3.00	180.00	1708.7	P27 595 EF01F-34 TGT
7	6764.8	0.23	224.89	6501.3	-1706.0	-99.2	0.25	224.89	1708.9	
8	10232.5	0.23	224.89	9969.0	-1715.9	-109.1	0.00	0.00	1719.4	P27 595 EF01F-34 BHL
9	10332.5	0.23	224.89	10069.0	-1716.2	-109.4	0.00	0.00	1719.7	



Surface Hole Location  
 NP EF01F-34 P27 595  
 Lat : 39.579246  
 Long : -108.033134



Azimuths to True North  
 Magnetic North: 10.46°

Magnetic Field  
 Strength: 52346.6nT  
 Dip Angle: 65.82°  
 Date: 11/5/2010  
 Model: IGRF2010

#### FORMATION TOP DETAILS

TVDPath	MDPath	Formation
6369.0	6632.5	Williams Fork (TVD)
6409.0	6672.5	Top of Gas (TVD)
9969.0	10232.5	Rollins TVD

Plan #1  
 NP EF01F-34 P27 595  
 WELL @ 6671.0ft (Original Well Elev)  
 North American Datum 1983  
 Well NP EF01F-34 P27 595, True North

Type TD	Target No Target (Freehand)	Azimuth 183.65	Origin Type Slot	N/S 0.0	E/W 0.0	From TVD 0.0
Name	TVD	+N/-S	+E/-W	Latitude	Longitude	
P27 595 EF01F-34 TGT	6409.0	-1705.9	-99.1	39.574563	-108.033485	
P27 595 EF01F-34 BHL	9969.0	-1715.9	-109.1	39.574535	-108.033521	

# Cathedral Energy Services

## Planning Report

<b>Database:</b>	EDM 5000.1 US Multi Users DB	<b>Local Co-ordinate Reference:</b>	Well NP EF01F-34 P27 595
<b>Company:</b>	EnCana Oil & Gas (USA) Inc	<b>TVD Reference:</b>	WELL @ 6671.0ft (Original Well Elev)
<b>Project:</b>	North Piceance	<b>MD Reference:</b>	WELL @ 6671.0ft (Original Well Elev)
<b>Site:</b>	P27 595 (S27-T5S-R95W)	<b>North Reference:</b>	True
<b>Well:</b>	NP EF01F-34 P27 595	<b>Survey Calculation Method:</b>	Minimum Curvature
<b>Wellbore:</b>	DD		
<b>Design:</b>	Plan #1		

<b>Project</b>	North Piceance		
<b>Map System:</b>	US State Plane 1983	<b>System Datum:</b>	Mean Sea Level
<b>Geo Datum:</b>	North American Datum 1983		
<b>Map Zone:</b>	Colorado Central Zone		

Site		P27 595 (S27-T5S-R95W)			
Site Position:		Northing:	1,645,842.89 ft	Latitude:	39.579292
From:	Lat/Long	Easting:	2,286,079.88 ft	Longitude:	-108.033175
Position Uncertainty:	0.0 ft	Slot Radius:	0.000 in	Grid Convergence:	-1.60 °

Well	NP EF01F-34 P27 595					
Well Position	+N/-S	0.0 ft	Northing:	1,645,825.97 ft	Latitude:	39.579246
	+E/-W	0.0 ft	Easting:	2,286,091.06 ft	Longitude:	-108.033134
Position Uncertainty		0.0 ft	Wellhead Elevation:	ft	Ground Level:	6,649.0 ft

<b>Wellbore</b>	DD				
<b>Magnetics</b>	<b>Model Name</b>	<b>Sample Date</b>	<b>Declination</b>	<b>Dip Angle</b>	<b>Field Strength</b>
			(°)	(°)	(nT)
	IGRF2010	11/5/2010	10.46	65.82	52,347

<b>Design</b>	Plan #1				
<b>Audit Notes:</b>					
<b>Version:</b>	<b>Phase:</b>	PLAN		<b>Tie On Depth:</b>	0.0
<b>Vertical Section:</b>	<b>Depth From (TVD)</b>	<b>+N/-S</b>	<b>+E/-W</b>	<b>Direction</b>	
	(ft)	(ft)	(ft)	(°)	
	0.0	0.0	0.0	183.65	

<b>Plan Sections</b>										
Measured Depth (ft)	Inclination (°)	Azimuth (°)	Vertical Depth (ft)	+N/-S (ft)	+E/-W (ft)	Dogleg Rate (°/100ft)	Build Rate (°/100ft)	Turn Rate (°/100ft)	TFO (°)	Target
0.0	0.00	0.00	0.0	0.0	0.0	0.00	0.00	0.00	0.00	
500.0	0.00	0.00	500.0	0.0	0.0	0.00	0.00	0.00	0.00	
766.7	8.00	135.00	765.8	-13.1	13.1	3.00	3.00	0.00	135.00	
1,243.8	18.18	184.65	1,231.1	-111.3	30.7	3.00	2.13	10.41	74.09	
6,066.5	18.18	184.65	5,813.2	-1,610.9	-91.4	0.00	0.00	0.00	0.00	
6,672.5	0.00	0.00	6,409.0	-1,705.9	-99.1	3.00	-3.00	0.00	180.00	P27 595 EF01F-34 Tc
6,764.8	0.23	224.89	6,501.3	-1,706.0	-99.2	0.25	0.25	-146.34	224.89	
10,232.5	0.23	224.89	9,969.0	-1,715.9	-109.1	0.00	0.00	0.00	0.00	P27 595 EF01F-34 BI
10,332.5	0.23	224.89	10,069.0	-1,716.2	-109.4	0.00	0.00	0.00	0.00	

# Cathedral Energy Services

## Planning Report

<b>Database:</b>	EDM 5000.1 US Multi Users DB	<b>Local Co-ordinate Reference:</b>	Well NP EF01F-34 P27 595
<b>Company:</b>	EnCana Oil & Gas (USA) Inc	<b>TVD Reference:</b>	WELL @ 6671.0ft (Original Well Elev)
<b>Project:</b>	North Piceance	<b>MD Reference:</b>	WELL @ 6671.0ft (Original Well Elev)
<b>Site:</b>	P27 595 (S27-T5S-R95W)	<b>North Reference:</b>	True
<b>Well:</b>	NP EF01F-34 P27 595	<b>Survey Calculation Method:</b>	Minimum Curvature
<b>Wellbore:</b>	DD		
<b>Design:</b>	Plan #1		

### Planned Survey

Measured Depth (ft)	Inclination (°)	Azimuth (°)	Vertical Depth (ft)	+N/-S (ft)	+E/-W (ft)	Vertical Section (ft)	Dogleg Rate (°/100ft)	Build Rate (°/100ft)	Comments / Formations
0.0	0.00	0.00	0.0	0.0	0.0	0.0	0.00	0.00	
100.0	0.00	0.00	100.0	0.0	0.0	0.0	0.00	0.00	
200.0	0.00	0.00	200.0	0.0	0.0	0.0	0.00	0.00	
300.0	0.00	0.00	300.0	0.0	0.0	0.0	0.00	0.00	
400.0	0.00	0.00	400.0	0.0	0.0	0.0	0.00	0.00	
500.0	0.00	0.00	500.0	0.0	0.0	0.0	0.00	0.00	KOP @ 500'
600.0	3.00	135.00	600.0	-1.9	1.9	1.7	3.00	3.00	
700.0	6.00	135.00	699.6	-7.4	7.4	6.9	3.00	3.00	
766.7	8.00	135.00	765.8	-13.1	13.1	12.3	3.00	3.00	
800.0	8.33	141.65	798.8	-16.7	16.3	15.6	3.00	0.99	
900.0	9.87	158.03	897.6	-30.3	24.0	28.7	3.00	1.54	
1,000.0	11.98	169.39	995.7	-48.5	29.1	46.5	3.00	2.10	
1,100.0	14.40	177.19	1,093.1	-71.1	31.6	68.9	3.00	2.42	
1,200.0	17.00	182.72	1,189.4	-98.1	31.5	95.9	3.00	2.60	
1,243.8	18.18	184.65	1,231.1	-111.3	30.7	109.1	3.00	2.69	EOB; Inc=18.18°
1,300.0	18.18	184.65	1,284.5	-128.8	29.3	126.7	0.00	0.00	
1,400.0	18.18	184.65	1,379.5	-159.9	26.7	157.9	0.00	0.00	
1,500.0	18.18	184.65	1,474.5	-191.0	24.2	189.0	0.00	0.00	
1,600.0	18.18	184.65	1,569.6	-222.1	21.7	220.2	0.00	0.00	
1,700.0	18.18	184.65	1,664.6	-253.2	19.1	251.4	0.00	0.00	
1,800.0	18.18	184.65	1,759.6	-284.3	16.6	282.6	0.00	0.00	
1,900.0	18.18	184.65	1,854.6	-315.4	14.1	313.8	0.00	0.00	
2,000.0	18.18	184.65	1,949.6	-346.4	11.5	345.0	0.00	0.00	
2,100.0	18.18	184.65	2,044.6	-377.5	9.0	376.2	0.00	0.00	
2,200.0	18.18	184.65	2,139.6	-408.6	6.5	407.4	0.00	0.00	
2,300.0	18.18	184.65	2,234.6	-439.7	3.9	438.6	0.00	0.00	
2,400.0	18.18	184.65	2,329.6	-470.8	1.4	469.8	0.00	0.00	
2,500.0	18.18	184.65	2,424.6	-501.9	-1.1	501.0	0.00	0.00	
2,600.0	18.18	184.65	2,519.6	-533.0	-3.6	532.2	0.00	0.00	
2,700.0	18.18	184.65	2,614.7	-564.1	-6.2	563.4	0.00	0.00	
2,800.0	18.18	184.65	2,709.7	-595.2	-8.7	594.5	0.00	0.00	
2,900.0	18.18	184.65	2,804.7	-626.3	-11.2	625.7	0.00	0.00	
3,000.0	18.18	184.65	2,899.7	-657.4	-13.8	656.9	0.00	0.00	
3,100.0	18.18	184.65	2,994.7	-688.5	-16.3	688.1	0.00	0.00	
3,200.0	18.18	184.65	3,089.7	-719.6	-18.8	719.3	0.00	0.00	
3,300.0	18.18	184.65	3,184.7	-750.7	-21.4	750.5	0.00	0.00	
3,400.0	18.18	184.65	3,279.7	-781.8	-23.9	781.7	0.00	0.00	
3,500.0	18.18	184.65	3,374.7	-812.9	-26.4	812.9	0.00	0.00	
3,600.0	18.18	184.65	3,469.7	-843.9	-29.0	844.1	0.00	0.00	
3,700.0	18.18	184.65	3,564.7	-875.0	-31.5	875.3	0.00	0.00	
3,800.0	18.18	184.65	3,659.8	-906.1	-34.0	906.5	0.00	0.00	
3,900.0	18.18	184.65	3,754.8	-937.2	-36.5	937.7	0.00	0.00	
4,000.0	18.18	184.65	3,849.8	-968.3	-39.1	968.8	0.00	0.00	
4,100.0	18.18	184.65	3,944.8	-999.4	-41.6	1,000.0	0.00	0.00	
4,200.0	18.18	184.65	4,039.8	-1,030.5	-44.1	1,031.2	0.00	0.00	
4,300.0	18.18	184.65	4,134.8	-1,061.6	-46.7	1,062.4	0.00	0.00	
4,400.0	18.18	184.65	4,229.8	-1,092.7	-49.2	1,093.6	0.00	0.00	
4,500.0	18.18	184.65	4,324.8	-1,123.8	-51.7	1,124.8	0.00	0.00	
4,600.0	18.18	184.65	4,419.8	-1,154.9	-54.3	1,156.0	0.00	0.00	
4,700.0	18.18	184.65	4,514.8	-1,186.0	-56.8	1,187.2	0.00	0.00	
4,800.0	18.18	184.65	4,609.8	-1,217.1	-59.3	1,218.4	0.00	0.00	
4,900.0	18.18	184.65	4,704.9	-1,248.2	-61.8	1,249.6	0.00	0.00	

# Cathedral Energy Services

## Planning Report

<b>Database:</b>	EDM 5000.1 US Multi Users DB	<b>Local Co-ordinate Reference:</b>	Well NP EF01F-34 P27 595
<b>Company:</b>	EnCana Oil & Gas (USA) Inc	<b>TVD Reference:</b>	WELL @ 6671.0ft (Original Well Elev)
<b>Project:</b>	North Piceance	<b>MD Reference:</b>	WELL @ 6671.0ft (Original Well Elev)
<b>Site:</b>	P27 595 (S27-T5S-R95W)	<b>North Reference:</b>	True
<b>Well:</b>	NP EF01F-34 P27 595	<b>Survey Calculation Method:</b>	Minimum Curvature
<b>Wellbore:</b>	DD		
<b>Design:</b>	Plan #1		

Planned Survey									
Measured Depth (ft)	Inclination (°)	Azimuth (°)	Vertical Depth (ft)	+N/-S (ft)	+E/-W (ft)	Vertical Section (ft)	Dogleg Rate (°/100ft)	Build Rate (°/100ft)	Comments / Formations
5,000.0	18.18	184.65	4,799.9	-1,279.3	-64.4	1,280.8	0.00	0.00	
5,100.0	18.18	184.65	4,894.9	-1,310.4	-66.9	1,312.0	0.00	0.00	
5,200.0	18.18	184.65	4,989.9	-1,341.5	-69.4	1,343.2	0.00	0.00	
5,300.0	18.18	184.65	5,084.9	-1,372.5	-72.0	1,374.3	0.00	0.00	
5,400.0	18.18	184.65	5,179.9	-1,403.6	-74.5	1,405.5	0.00	0.00	
5,500.0	18.18	184.65	5,274.9	-1,434.7	-77.0	1,436.7	0.00	0.00	
5,600.0	18.18	184.65	5,369.9	-1,465.8	-79.6	1,467.9	0.00	0.00	
5,700.0	18.18	184.65	5,464.9	-1,496.9	-82.1	1,499.1	0.00	0.00	
5,800.0	18.18	184.65	5,559.9	-1,528.0	-84.6	1,530.3	0.00	0.00	
5,900.0	18.18	184.65	5,654.9	-1,559.1	-87.2	1,561.5	0.00	0.00	
6,000.0	18.18	184.65	5,750.0	-1,590.2	-89.7	1,592.7	0.00	0.00	
6,066.5	18.18	184.65	5,813.1	-1,610.9	-91.4	1,613.4	0.00	0.00	Start Drop -3.00
6,100.0	17.17	184.65	5,845.1	-1,621.0	-92.2	1,623.6	3.00	-3.00	
6,200.0	14.17	184.65	5,941.3	-1,647.9	-94.4	1,650.6	3.00	-3.00	
6,300.0	11.17	184.65	6,038.9	-1,669.8	-96.2	1,672.5	3.00	-3.00	
6,400.0	8.17	184.65	6,137.4	-1,686.6	-97.5	1,689.3	3.00	-3.00	
6,500.0	5.17	184.65	6,236.8	-1,698.1	-98.5	1,701.0	3.00	-3.00	
6,600.0	2.17	184.65	6,336.5	-1,704.5	-99.0	1,707.4	3.00	-3.00	
6,632.5	1.20	184.65	6,369.0	-1,705.5	-99.1	1,708.3	3.00	-3.00	Williams Fork (TVD)
6,672.5	0.00	0.00	6,409.0	-1,705.9	-99.1	1,708.7	3.00	-3.00	EOD; Inc=0° - Top of Gas (TVD) - P27 595 EF0
6,700.0	0.07	224.89	6,436.5	-1,705.9	-99.1	1,708.8	0.25	0.25	
6,764.8	0.23	224.89	6,501.3	-1,706.0	-99.2	1,708.9	0.25	0.25	
6,800.0	0.23	224.89	6,536.5	-1,706.1	-99.3	1,709.0	0.00	0.00	
6,900.0	0.23	224.89	6,636.5	-1,706.4	-99.6	1,709.3	0.00	0.00	
7,000.0	0.23	224.89	6,736.5	-1,706.7	-99.9	1,709.6	0.00	0.00	
7,100.0	0.23	224.89	6,836.5	-1,707.0	-100.2	1,709.9	0.00	0.00	
7,200.0	0.23	224.89	6,936.5	-1,707.3	-100.5	1,710.2	0.00	0.00	
7,300.0	0.23	224.89	7,036.5	-1,707.6	-100.8	1,710.5	0.00	0.00	
7,400.0	0.23	224.89	7,136.5	-1,707.8	-101.0	1,710.8	0.00	0.00	
7,500.0	0.23	224.89	7,236.5	-1,708.1	-101.3	1,711.1	0.00	0.00	
7,600.0	0.23	224.89	7,336.5	-1,708.4	-101.6	1,711.4	0.00	0.00	
7,700.0	0.23	224.89	7,436.5	-1,708.7	-101.9	1,711.7	0.00	0.00	
7,800.0	0.23	224.89	7,536.5	-1,709.0	-102.2	1,712.0	0.00	0.00	
7,900.0	0.23	224.89	7,636.5	-1,709.3	-102.5	1,712.3	0.00	0.00	
8,000.0	0.23	224.89	7,736.5	-1,709.6	-102.7	1,712.6	0.00	0.00	
8,100.0	0.23	224.89	7,836.5	-1,709.8	-103.0	1,712.9	0.00	0.00	
8,200.0	0.23	224.89	7,936.5	-1,710.1	-103.3	1,713.2	0.00	0.00	
8,300.0	0.23	224.89	8,036.5	-1,710.4	-103.6	1,713.5	0.00	0.00	
8,400.0	0.23	224.89	8,136.5	-1,710.7	-103.9	1,713.8	0.00	0.00	
8,500.0	0.23	224.89	8,236.5	-1,711.0	-104.2	1,714.1	0.00	0.00	
8,600.0	0.23	224.89	8,336.5	-1,711.3	-104.4	1,714.4	0.00	0.00	
8,700.0	0.23	224.89	8,436.5	-1,711.6	-104.7	1,714.8	0.00	0.00	
8,800.0	0.23	224.89	8,536.5	-1,711.8	-105.0	1,715.1	0.00	0.00	
8,900.0	0.23	224.89	8,636.5	-1,712.1	-105.3	1,715.4	0.00	0.00	
9,000.0	0.23	224.89	8,736.5	-1,712.4	-105.6	1,715.7	0.00	0.00	
9,100.0	0.23	224.89	8,836.5	-1,712.7	-105.9	1,716.0	0.00	0.00	
9,200.0	0.23	224.89	8,936.5	-1,713.0	-106.2	1,716.3	0.00	0.00	
9,300.0	0.23	224.89	9,036.5	-1,713.3	-106.4	1,716.6	0.00	0.00	
9,400.0	0.23	224.89	9,136.5	-1,713.6	-106.7	1,716.9	0.00	0.00	
9,500.0	0.23	224.89	9,236.5	-1,713.8	-107.0	1,717.2	0.00	0.00	
9,600.0	0.23	224.89	9,336.5	-1,714.1	-107.3	1,717.5	0.00	0.00	
9,700.0	0.23	224.89	9,436.5	-1,714.4	-107.6	1,717.8	0.00	0.00	

# Cathedral Energy Services

## Planning Report

<b>Database:</b>	EDM 5000.1 US Multi Users DB	<b>Local Co-ordinate Reference:</b>	Well NP EF01F-34 P27 595
<b>Company:</b>	EnCana Oil & Gas (USA) Inc	<b>TVD Reference:</b>	WELL @ 6671.0ft (Original Well Elev)
<b>Project:</b>	North Piceance	<b>MD Reference:</b>	WELL @ 6671.0ft (Original Well Elev)
<b>Site:</b>	P27 595 (S27-T5S-R95W)	<b>North Reference:</b>	True
<b>Well:</b>	NP EF01F-34 P27 595	<b>Survey Calculation Method:</b>	Minimum Curvature
<b>Wellbore:</b>	DD		
<b>Design:</b>	Plan #1		

### Planned Survey

Measured Depth (ft)	Inclination (°)	Azimuth (°)	Vertical Depth (ft)	+N/-S (ft)	+E/-W (ft)	Vertical Section (ft)	Dogleg Rate (°/100ft)	Build Rate (°/100ft)	Comments / Formations
9,800.0	0.23	224.89	9,536.5	-1,714.7	-107.9	1,718.1	0.00	0.00	
9,900.0	0.23	224.89	9,636.5	-1,715.0	-108.1	1,718.4	0.00	0.00	
10,000.0	0.23	224.89	9,736.5	-1,715.3	-108.4	1,718.7	0.00	0.00	
10,100.0	0.23	224.89	9,836.5	-1,715.6	-108.7	1,719.0	0.00	0.00	
10,200.0	0.23	224.89	9,936.5	-1,715.8	-109.0	1,719.3	0.00	0.00	
10,232.5	0.23	224.89	9,969.0	-1,715.9	-109.1	1,719.4	0.00	0.00	Rollins TVD - P27 595 EF01F-34 BHL
10,300.0	0.23	224.89	10,036.5	-1,716.1	-109.3	1,719.6	0.00	0.00	
10,332.5	0.23	224.89	10,069.0	-1,716.2	-109.4	1,719.7	0.00	0.00	Drillers TD @ 10,069' TVD

### Targets

Target Name	Dip Angle (°)	Dip Dir. (°)	TVD (ft)	+N/-S (ft)	+E/-W (ft)	Northing (ft)	Easting (ft)	Latitude	Longitude
- hit/miss target									
- Shape									
P27 595 EF01F-34 BHL	0.00	0.00	9,969.0	-1,715.9	-109.1	1,644,113.75	2,285,934.17	39.574535	-108.033521
- plan hits target center									
- Rectangle (sides W30.0 H50.0 D0.0)									
P27 595 EF01F-34 TGT	0.00	0.00	6,409.0	-1,705.9	-99.1	1,644,123.49	2,285,944.44	39.574563	-108.033485
- plan hits target center									
- Point									

### Formations

Measured Depth (ft)	Vertical Depth (ft)	Name	Lithology	Dip (°)	Dip Direction (°)
6,632.5	6,369.0	Williams Fork (TVD)			
6,672.5	6,409.0	Top of Gas (TVD)			
10,232.5	9,969.0	Rollins TVD			

### Plan Annotations

Measured Depth (ft)	Vertical Depth (ft)	+N/-S (ft)	+E/-W (ft)	Comment
500.0	500.0	0.0	0.0	KOP @ 500'
1,243.8	1,231.1	-13.1	13.1	EOB; Inc=18.18°
6,066.5	5,813.2	-111.3	30.7	Start Drop -3.00
6,672.5	6,409.0	-1,610.9	-91.4	EOD; Inc=0°
10,332.5	10,069.0	-1,705.9	-99.1	Drillers TD @ 10,069' TVD