

T5S, R95W, 6th P.M.

589°36'45"W - 5269.81' (Meas.)

1916 Brass Cap  
1.0' High  
Lat: 39.592019°  
Long: 108.049953°

1916 Brass Cap  
1.2' High  
Lat: 39.592106°  
Long: 108.031260°

LINE TABLE		
LINE	BEARING	LENGTH
L1	N00°10'14"W	326.70'

N00°10'14"W - 5266.93' (Meas.)

NOTE:  
THE PROPOSED BOTTOM HOLE FOR THIS WELL IS  
LOCATED IN THE NE 1/4 NE 1/4 OF SECTION  
34 T5S, R95W, 6th P.M. AT A DISTANCE OF  
264' FNL 66.3' FEL. IT BEARS S07°01'49"W  
886.86' FROM THE PROPOSED WELL HEAD.

NOTE:  
SEE ADDENDUM FOR EXISTING  
IMPROVEMENT WITHIN 400' OF THE  
PROPOSED WELL DISTURBANCE.

1916 Brass Cap  
1.2' High  
Lat: 39.584839°  
Long: 108.031265°

N00°01'07"W - 2647.81' (Meas.)

N00°22'55"W - 2645.47' (Meas.)

N. PARACHUTE  
EF01B-34 P27 595  
Elev. Graded Ground = 6650'

True Position

S89°54'43"W - 2639.14' (Meas.)

S89°53'06"W - 2633.38' (Meas.)

1916 Brass Cap  
1.5' High  
Lat: 39.576667°  
Long: 108.049907°

1916 Brass Cap  
1.2' High  
Lat: 39.577570°  
Long: 108.040550°

1916 Brass Cap  
1.0' High, N-S  
Fence Line  
Lat: 39.577578°  
Long: 108.031210°

LEGEND:

- 90° SYMBOL
- PROPOSED WELL HEAD.
- SECTION CORNERS LOCATED.

NAD 83 (SURFACE LOCATION)	
LATITUDE =	39°34'45.54" (39.579317)
LONGITUDE =	108°01'59.43" (108.033175)
NAD 27 (SURFACE LOCATION)	
LATITUDE =	39°34'45.62" (39.579339)
LONGITUDE =	108°01'57.16" (108.032544)

PDOP = 2.7

**Encana Oil & Gas (USA) INC.**  
Well location, N. PARACHUTE EF01B-34 P27 595 (SURFACE LOCATION), located as shown in the SE 1/4 SE 1/4 of Section 27, T5S, R95W, 6th P.M., Garfield County, Colorado.

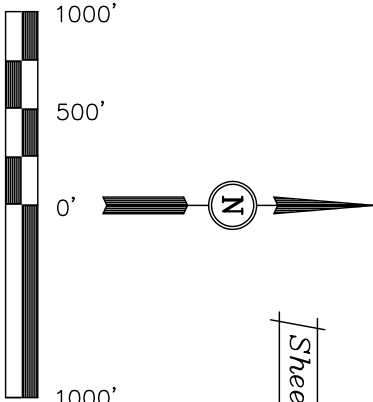
BASIS OF ELEVATION

SPOT ELEVATION AT THE NORTHWEST CORNER OF SECTION 30, T5S, R95W, 6th P.M. TAKEN FROM THE FORKED GULCH QUADRANGLE, COLORADO, GARFIELD COUNTY, 7.5 MINUTE SERIES (TOPOGRAPHICAL MAP) PUBLISHED BY THE UNITED STATES DEPARTMENT OF THE INTERIOR, GEOLOGICAL SURVEY. SAID ELEVATION IS MARKED AS BEING 5966 FEET.

BASIS OF BEARINGS

BASIS OF BEARINGS IS A G.P.S. OBSERVATION.

Sheet 111 of 101



CERTIFICATE

THIS IS TO CERTIFY THAT THE ABOVE PLAT WAS PREPARED AND LOCATION AS SHOWN WAS STAKED ON THE GROUND FROM FIELD NOTES OF ACTUAL SURVEYS MADE BY ME OR UNDER MY CLOSE SUPERVISION AND THAT THE SAME ARE TRUE AND CORRECT TO THE BEST OF MY KNOWLEDGE AND BELIEF.

Revised: 11-05-10 D.R.B.  
Revised: 09-15-10 D.R.B.

REGISTERED LAND SURVEYOR  
REGISTRATION NO. 7492  
STATE OF COLORADO

**UINTAH ENGINEERING & LAND SURVEYING**  
85 SOUTH 200 EAST - VERNAL, UTAH 84078  
(435) 789-1017

1" = 1000'	DATE SURVEYED: 11-01-08	DATE DRAWN: 12-03-08
B.H. S.K. D.R.B.	REFERENCES	G.L.O. PLAT
WEATHER COOL	FILE	Encana Oil & Gas (USA) INC.

T5S, R95W, 6th P.M.

**Encana Oil & Gas (USA) INC.**  
Well location, N. PARACHUTE EF01B-34 P27 595 (TARGET BOTTOM HOLE), located as shown in the NE 1/4 NE 1/4 of Section 34, T5S, R95W, 6th P.M., Garfield County, Colorado.

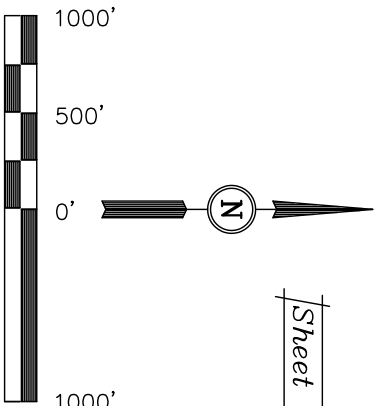
BASIS OF ELEVATION

SPOT ELEVATION AT THE NORTHWEST CORNER OF SECTION 30, T5S, R95W, 6th P.M. TAKEN FROM THE FORKED GULCH QUADRANGLE, COLORADO, GARFIELD COUNTY, 7.5 MINUTE SERIES (TOPOGRAPHICAL MAP) PUBLISHED BY THE UNITED STATES DEPARTMENT OF THE INTERIOR, GEOLOGICAL SURVEY. SAID ELEVATION IS MARKED AS BEING 5966 FEET.

BASIS OF BEARINGS

BASIS OF BEARINGS IS A G.P.S. OBSERVATION.

Sheet 1mm of 10



CERTIFICATE

THIS IS TO CERTIFY THAT THE ABOVE PLAT WAS PREPARED AND LOCATION AS SHOWN WAS STAKED ON THE GROUND FROM FIELD NOTES OF ACTUAL SURVEYS MADE BY ME OR UNDER MY CLOSE SUPERVISION AND THAT THE SAME ARE TRUE AND CORRECT TO THE BEST OF MY KNOWLEDGE AND BELIEF.

REGISTERED LAND SURVEYOR  
REGISTRATION NO. 7492  
STATE OF COLORADO

**UINTAH ENGINEERING & LAND SURVEYING**  
**85 SOUTH 200 EAST - VERNAL, UTAH 84078**  
(435) 789-1017

1" = 1000'	DATE SURVEYED:	DATE DRAWN:
B.H.	S.K.	D.R.B.
WEATHER	COOL	FILE
	Encana Oil & Gas (USA) INC.	

LEGEND:

- = 90° SYMBOL
- = PROPOSED WELL HEAD.
- = SECTION CORNERS LOCATED.

