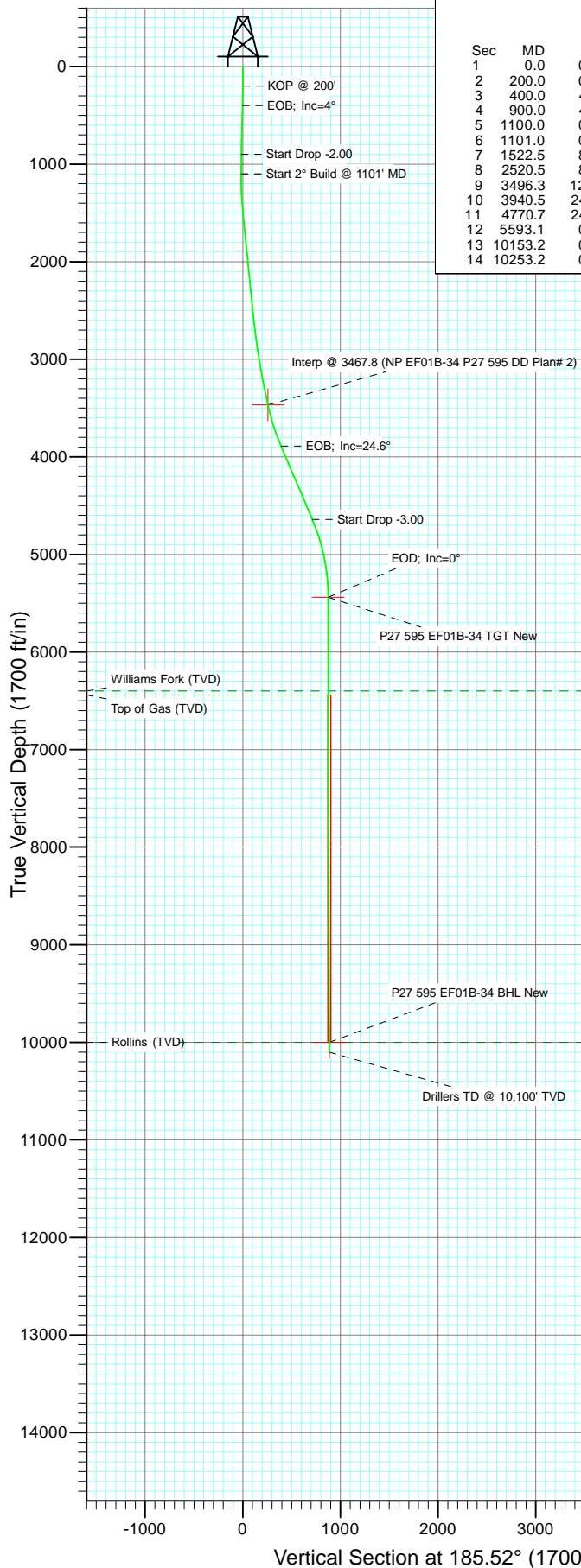
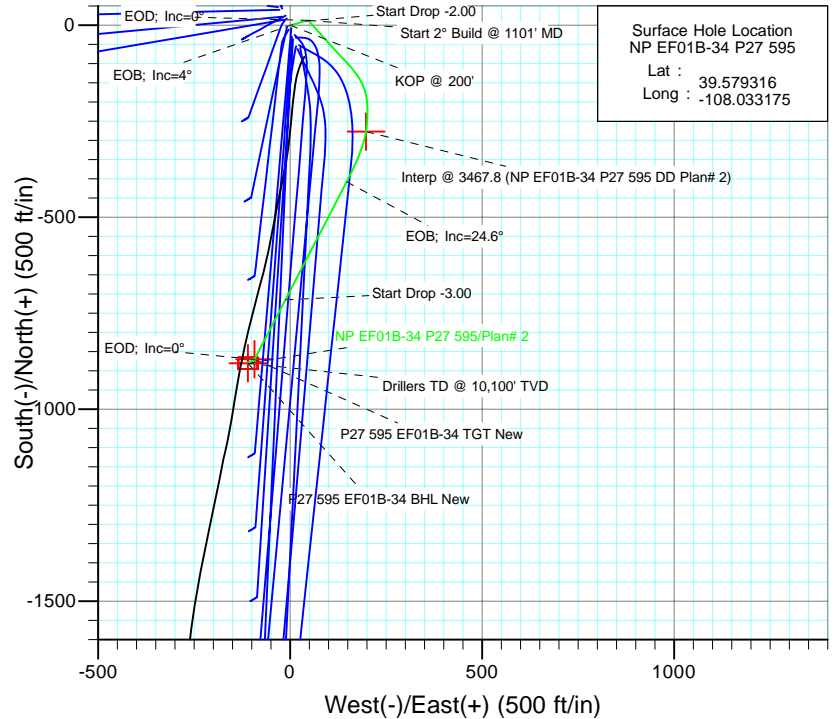




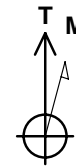
Project: North Piceance
Site: P27 595 (S27-T5S-R95W)
Well: NP EF01B-34 P27 595
Wellbore: DD
Design: Plan# 2



SECTION DETAILS										
Sec	MD	Inc	Azi	TVD	+N/-S	+E/-W	Dleg	TFace	VSec	Target
1	0.0	0.00	0.00	0.0	0.0	0.0	0.00	0.00	0.0	
2	200.0	0.00	0.00	200.0	0.0	0.0	0.00	0.00	0.0	
3	400.0	4.00	75.00	399.8	1.8	6.7	2.00	75.00	-2.4	
4	900.0	4.00	75.00	898.6	10.8	40.4	0.00	0.00	-14.7	
5	1100.0	0.00	0.00	1098.5	12.6	47.2	2.00	180.00	-17.1	
6	1101.0	0.00	0.00	1099.5	12.6	47.2	0.00	0.00	-17.1	
7	1522.5	8.43	137.85	1519.5	-10.3	67.9	2.00	137.85	3.7	
8	2520.5	8.43	137.85	2506.7	-118.8	166.1	0.00	0.00	102.3	
9	3496.3	12.56	188.97	3467.8	-277.0	197.7	1.00	92.73	256.7	Interp @ 3467.8 (NP EF01B-34 P27 595 DD Plan# 2)
10	3940.5	24.67	207.42	3888.4	-407.6	147.2	3.00	34.97	391.6	
11	4770.7	24.67	207.42	4642.7	-715.2	-12.4	0.00	0.00	713.1	
12	5593.1	0.00	0.00	5440.0	-870.0	-92.7	3.00	180.00	874.9	P27 595 EF01B-34 TGT New
13	10153.2	0.49	239.43	10000.0	-880.0	-109.7	0.01	239.43	886.5	P27 595 EF01B-34 BHL New
14	10253.2	0.49	239.43	10100.0	-880.5	-110.4	0.00	0.00	887.0	



Surface Hole Location
NP EF01B-34 P27 595
Lat : 39.579316
Long : -108.033175



Azimuths to True North
Magnetic North: 10.65°

Magnetic Field
Strength: 52539.4nT
Dip Angle: 65.87°
Date: 3/9/2009
Model: IGRF200510

FORMATION TOP DETAILS

TVDPath	MDPath	Formation
6400.0	6553.1	Williams Fork (TVD)
6440.0	6593.1	Top of Gas (TVD)
10000.0	10153.2	Rollins (TVD)

Plan# 2 NP EF01B-34 P27 595 95xxx; LR EF01B-34 P27 @ 6671.0ft (Original Well Elev) North American Datum 1983 Well NP EF01B-34 P27 595, True North						
Type Target	Target P27 595 EF01B-34 BHL	Azimuth 185.52	Origin Type Slot	N/S 0.0	E/W 0.0	From TVD 0.0
Name	TVD	+N/-S	+E/-W	Latitude	Longitude	
P27 595 EF01B-34 TGT New	3467.8	-277.0	197.7	39.578556	-108.032473	
P27 595 EF01B-34 TGT New	5440.0	-870.0	-92.7	39.576928	-108.033504	
P27 595 EF01B-34 BHL New	10000.0	-880.0	-109.7	39.576900	-108.033564	

Cathedral Energy Services

Planning Report

Database:	EDM 5000.1 US Multi Users DB	Local Co-ordinate Reference:	Well NP EF01B-34 P27 595
Company:	EnCana Oil & Gas (USA) Inc	TVD Reference:	EF01B-34 P27 @ 6671.0ft (Original Well Elev)
Project:	North Piceance	MD Reference:	EF01B-34 P27 @ 6671.0ft (Original Well Elev)
Site:	P27 595 (S27-T5S-R95W)	North Reference:	True
Well:	NP EF01B-34 P27 595	Survey Calculation Method:	Minimum Curvature
Wellbore:	DD		
Design:	Plan# 2		

Project	North Piceance		
Map System:	US State Plane 1983	System Datum:	Mean Sea Level
Geo Datum:	North American Datum 1983		
Map Zone:	Colorado Central Zone		

Site		P27 595 (S27-T5S-R95W)			
Site Position:		Northing:	1,645,842.89 ft	Latitude:	39.579292
From:	Lat/Long	Easting:	2,286,079.88 ft	Longitude:	-108.033175
Position Uncertainty:	0.0 ft	Slot Radius:	0.000 in	Grid Convergence:	-1.60 °

Well	NP EF01B-34 P27 595					
Well Position	+N/-S	0.0 ft	Northing:	1,645,851.78 ft	Latitude:	39.579316
	+E/-W	0.0 ft	Easting:	2,286,080.22 ft	Longitude:	-108.033175
Position Uncertainty		0.0 ft	Wellhead Elevation:	ft	Ground Level:	6,649.0 ft

Wellbore	DD				
Magnetics	Model Name	Sample Date	Declination (°)	Dip Angle (°)	Field Strength (nT)
	IGRF200510	3/9/2009	10.65	65.87	52,539

Design	Plan# 2			
Audit Notes:				
Version:	Phase:	PLAN	Tie On Depth:	0.0
Vertical Section:	Depth From (TVD) (ft)	+N/-S (ft)	+E/-W (ft)	Direction (°)
	0.0	0.0	0.0	185.52

Plan Sections										
Measured Depth (ft)	Inclination (°)	Azimuth (°)	Vertical Depth (ft)	+N/-S (ft)	+E/-W (ft)	Dogleg Rate (°/100ft)	Build Rate (°/100ft)	Turn Rate (°/100ft)	TFO (°)	Target
0.0	0.00	0.00	0.0	0.0	0.0	0.00	0.00	0.00	0.00	
200.0	0.00	0.00	200.0	0.0	0.0	0.00	0.00	0.00	0.00	
400.0	4.00	75.00	399.8	1.8	6.7	2.00	2.00	0.00	75.00	
900.0	4.00	75.00	898.6	10.8	40.4	0.00	0.00	0.00	0.00	
1,100.0	0.00	0.00	1,098.5	12.6	47.2	2.00	-2.00	0.00	180.00	
1,101.0	0.00	0.00	1,099.5	12.6	47.2	0.00	0.00	0.00	0.00	
1,522.5	8.43	137.85	1,519.5	-10.3	67.9	2.00	2.00	0.00	137.85	
2,520.5	8.43	137.85	2,506.7	-118.8	166.1	0.00	0.00	0.00	0.00	
3,496.3	12.56	188.97	3,467.8	-277.0	197.7	1.00	0.42	5.24	92.73	Interp @ 3467.8 (NP I
3,940.5	24.67	207.42	3,888.4	-407.6	147.2	3.00	2.73	4.15	34.97	
4,770.7	24.67	207.42	4,642.7	-715.2	-12.4	0.00	0.00	0.00	0.00	
5,593.1	0.00	0.00	5,440.0	-870.0	-92.7	3.00	-3.00	0.00	180.00	P27 595 EF01B-34 T
10,153.2	0.49	239.43	10,000.0	-880.0	-109.7	0.01	0.01	-2.64	239.43	P27 595 EF01B-34 BI
10,253.2	0.49	239.43	10,100.0	-880.5	-110.4	0.00	0.00	0.00	0.00	

Cathedral Energy Services

Planning Report

Database:	EDM 5000.1 US Multi Users DB	Local Co-ordinate Reference:	Well NP EF01B-34 P27 595
Company:	EnCana Oil & Gas (USA) Inc	TVD Reference:	EF01B-34 P27 @ 6671.0ft (Original Well Elev)
Project:	North Piceance	MD Reference:	EF01B-34 P27 @ 6671.0ft (Original Well Elev)
Site:	P27 595 (S27-T5S-R95W)	North Reference:	True
Well:	NP EF01B-34 P27 595	Survey Calculation Method:	Minimum Curvature
Wellbore:	DD		
Design:	Plan# 2		

Planned Survey

Measured Depth (ft)	Inclination (°)	Azimuth (°)	Vertical Depth (ft)	+N/-S (ft)	+E/-W (ft)	Vertical Section (ft)	Dogleg Rate (°/100ft)	Build Rate (°/100ft)	Comments / Formations
0.0	0.00	0.00	0.0	0.0	0.0	0.0	0.00	0.00	
100.0	0.00	0.00	100.0	0.0	0.0	0.0	0.00	0.00	
200.0	0.00	0.00	200.0	0.0	0.0	0.0	0.00	0.00	KOP @ 200'
300.0	2.00	75.00	300.0	0.5	1.7	-0.6	2.00	2.00	
400.0	4.00	75.00	399.8	1.8	6.7	-2.4	2.00	2.00	EOB; Inc=4°
500.0	4.00	75.00	499.6	3.6	13.5	-4.9	0.00	0.00	
600.0	4.00	75.00	599.4	5.4	20.2	-7.3	0.00	0.00	
700.0	4.00	75.00	699.1	7.2	27.0	-9.8	0.00	0.00	
800.0	4.00	75.00	798.9	9.0	33.7	-12.2	0.00	0.00	
900.0	4.00	75.00	898.6	10.8	40.4	-14.7	0.00	0.00	Start Drop -2.00
1,000.0	2.00	75.00	998.5	12.2	45.5	-16.5	2.00	-2.00	
1,100.0	0.00	0.00	1,098.5	12.6	47.2	-17.1	2.00	-2.00	EOD; Inc=0°
1,101.0	0.00	0.00	1,099.5	12.6	47.2	-17.1	0.00	0.00	Start 2° Build @ 1101' MD
1,200.0	1.98	137.85	1,198.4	11.4	48.3	-16.0	2.00	2.00	
1,300.0	3.98	137.85	1,298.3	7.5	51.8	-12.5	2.00	2.00	
1,400.0	5.98	137.85	1,397.9	1.1	57.6	-6.6	2.00	2.00	
1,500.0	7.98	137.85	1,497.2	-7.9	65.8	1.6	2.00	2.00	
1,522.5	8.43	137.85	1,519.5	-10.3	67.9	3.7	2.00	2.00	
1,600.0	8.43	137.85	1,596.1	-18.7	75.6	11.4	0.00	0.00	
1,700.0	8.43	137.85	1,695.0	-29.6	85.4	21.2	0.00	0.00	
1,800.0	8.43	137.85	1,793.9	-40.5	95.2	31.1	0.00	0.00	
1,900.0	8.43	137.85	1,892.9	-51.3	105.1	41.0	0.00	0.00	
2,000.0	8.43	137.85	1,991.8	-62.2	114.9	50.9	0.00	0.00	
2,100.0	8.43	137.85	2,090.7	-73.1	124.8	60.7	0.00	0.00	
2,200.0	8.43	137.85	2,189.6	-83.9	134.6	70.6	0.00	0.00	
2,300.0	8.43	137.85	2,288.5	-94.8	144.4	80.5	0.00	0.00	
2,400.0	8.43	137.85	2,387.5	-105.7	154.3	90.4	0.00	0.00	
2,500.0	8.43	137.85	2,486.4	-116.6	164.1	100.2	0.00	0.00	
2,520.5	8.43	137.85	2,506.7	-118.8	166.1	102.3	0.00	0.00	
2,600.0	8.43	143.27	2,585.3	-127.8	173.5	110.5	1.00	0.00	
2,700.0	8.53	150.02	2,684.2	-140.1	181.6	122.0	1.00	0.10	
2,800.0	8.75	156.52	2,783.1	-153.5	188.4	134.7	1.00	0.22	
2,900.0	9.07	162.64	2,881.9	-168.0	193.7	148.6	1.00	0.32	
3,000.0	9.49	168.28	2,980.6	-183.6	197.8	163.7	1.00	0.42	
3,100.0	9.99	173.41	3,079.1	-200.3	200.4	180.1	1.00	0.50	
3,200.0	10.56	178.02	3,177.5	-218.0	201.7	197.6	1.00	0.57	
3,300.0	11.19	182.14	3,275.7	-236.9	201.7	216.4	1.00	0.63	
3,400.0	11.87	185.82	3,373.7	-256.8	200.3	236.4	1.00	0.68	
3,496.3	12.56	188.97	3,467.8	-277.0	197.7	256.7	1.00	0.72	Interp @ 3467.8 (NP EF01B-34 P27 595 DD Pl)
3,500.0	12.65	189.26	3,471.4	-277.8	197.5	257.5	3.00	2.46	
3,600.0	15.21	195.78	3,568.5	-301.2	192.2	281.4	3.00	2.56	
3,700.0	17.91	200.42	3,664.3	-328.3	183.3	309.1	3.00	2.70	
3,800.0	20.69	203.86	3,758.7	-358.9	170.8	340.8	3.00	2.78	
3,900.0	23.52	206.51	3,851.4	-392.9	154.7	376.2	3.00	2.83	
3,940.5	24.67	207.42	3,888.3	-407.6	147.2	391.5	3.00	2.86	EOB; Inc=24.6°
4,000.0	24.67	207.42	3,942.4	-429.6	135.8	414.6	0.00	0.00	
4,100.0	24.67	207.42	4,033.3	-466.7	116.5	453.3	0.00	0.00	
4,200.0	24.67	207.42	4,124.1	-503.8	97.3	492.1	0.00	0.00	
4,300.0	24.67	207.42	4,215.0	-540.8	78.1	530.8	0.00	0.00	
4,400.0	24.67	207.42	4,305.9	-577.9	58.9	569.5	0.00	0.00	
4,500.0	24.67	207.42	4,396.8	-614.9	39.6	608.3	0.00	0.00	
4,600.0	24.67	207.42	4,487.6	-652.0	20.4	647.0	0.00	0.00	

Cathedral Energy Services

Planning Report

Database:	EDM 5000.1 US Multi Users DB	Local Co-ordinate Reference:	Well NP EF01B-34 P27 595
Company:	EnCana Oil & Gas (USA) Inc	TVD Reference:	EF01B-34 P27 @ 6671.0ft (Original Well Elev)
Project:	North Piceance	MD Reference:	EF01B-34 P27 @ 6671.0ft (Original Well Elev)
Site:	P27 595 (S27-T5S-R95W)	North Reference:	True
Well:	NP EF01B-34 P27 595	Survey Calculation Method:	Minimum Curvature
Wellbore:	DD		
Design:	Plan# 2		

Planned Survey

Measured Depth (ft)	Inclination (°)	Azimuth (°)	Vertical Depth (ft)	+N/-S (ft)	+E/-W (ft)	Vertical Section (ft)	Dogleg Rate (°/100ft)	Build Rate (°/100ft)	Comments / Formations
4,700.0	24.67	207.42	4,578.5	-689.0	1.2	685.7	0.00	0.00	
4,770.7	24.67	207.42	4,642.7	-715.2	-12.4	713.1	0.00	0.00	Start Drop -3.00
4,800.0	23.79	207.42	4,669.5	-725.9	-17.9	724.3	3.00	-3.00	
4,900.0	20.79	207.42	4,762.0	-759.6	-35.4	759.5	3.00	-3.00	
5,000.0	17.79	207.42	4,856.3	-788.9	-50.6	790.1	3.00	-3.00	
5,100.0	14.79	207.42	4,952.3	-813.8	-63.5	816.1	3.00	-3.00	
5,200.0	11.79	207.42	5,049.6	-834.2	-74.1	837.5	3.00	-3.00	
5,300.0	8.79	207.42	5,148.0	-850.1	-82.4	854.0	3.00	-3.00	
5,400.0	5.79	207.42	5,247.2	-861.3	-88.2	865.8	3.00	-3.00	
5,500.0	2.79	207.42	5,346.9	-868.0	-91.7	872.8	3.00	-3.00	
5,593.1	0.00	207.42	5,440.0	-870.0	-92.7	874.9	3.00	-3.00	EOD; Inc=0° - P27 595 EF01B-34 TGT New
5,600.0	0.00	239.43	5,446.9	-870.0	-92.7	874.9	0.01	-0.01	
5,700.0	0.01	239.43	5,546.9	-870.0	-92.7	874.9	0.01	0.01	
5,800.0	0.02	239.43	5,646.9	-870.0	-92.7	874.9	0.01	0.01	
5,900.0	0.03	239.43	5,746.9	-870.0	-92.8	874.9	0.01	0.01	
6,000.0	0.04	239.43	5,846.9	-870.1	-92.8	875.0	0.01	0.01	
6,100.0	0.05	239.43	5,946.9	-870.1	-92.9	875.0	0.01	0.01	
6,200.0	0.07	239.43	6,046.9	-870.2	-93.0	875.1	0.01	0.01	
6,300.0	0.08	239.43	6,146.9	-870.2	-93.1	875.2	0.01	0.01	
6,400.0	0.09	239.43	6,246.9	-870.3	-93.2	875.2	0.01	0.01	
6,500.0	0.10	239.43	6,346.9	-870.4	-93.4	875.3	0.01	0.01	
6,553.1	0.10	239.43	6,400.0	-870.4	-93.5	875.4	0.01	0.01	Williams Fork (TVD)
6,593.1	0.11	239.43	6,440.0	-870.5	-93.5	875.4	0.01	0.01	Top of Gas (TVD)
6,600.0	0.11	239.43	6,446.9	-870.5	-93.5	875.4	0.02	0.02	
6,604.3	0.11	239.43	6,451.1	-870.5	-93.5	875.5	0.00	0.00	P27 595 EF01B-34 TGT
6,700.0	0.12	239.43	6,546.9	-870.6	-93.7	875.6	0.01	0.01	
6,800.0	0.13	239.43	6,646.9	-870.7	-93.9	875.7	0.01	0.01	
6,900.0	0.14	239.43	6,746.9	-870.8	-94.1	875.8	0.01	0.01	
7,000.0	0.15	239.43	6,846.9	-871.0	-94.3	876.0	0.01	0.01	
7,100.0	0.16	239.43	6,946.9	-871.1	-94.6	876.1	0.01	0.01	
7,200.0	0.17	239.43	7,046.9	-871.2	-94.8	876.3	0.01	0.01	
7,300.0	0.19	239.43	7,146.9	-871.4	-95.1	876.5	0.01	0.01	
7,400.0	0.20	239.43	7,246.9	-871.6	-95.4	876.7	0.01	0.01	
7,500.0	0.21	239.43	7,346.9	-871.8	-95.7	876.9	0.01	0.01	
7,600.0	0.22	239.43	7,446.8	-871.9	-96.0	877.1	0.01	0.01	
7,700.0	0.23	239.43	7,546.8	-872.1	-96.3	877.4	0.01	0.01	
7,800.0	0.24	239.43	7,646.8	-872.3	-96.7	877.6	0.01	0.01	
7,900.0	0.25	239.43	7,746.8	-872.6	-97.0	877.9	0.01	0.01	
8,000.0	0.26	239.43	7,846.8	-872.8	-97.4	878.1	0.01	0.01	
8,100.0	0.27	239.43	7,946.8	-873.0	-97.8	878.4	0.01	0.01	
8,200.0	0.28	239.43	8,046.8	-873.3	-98.2	878.7	0.01	0.01	
8,300.0	0.29	239.43	8,146.8	-873.5	-98.7	879.0	0.01	0.01	
8,400.0	0.30	239.43	8,246.8	-873.8	-99.1	879.3	0.01	0.01	
8,500.0	0.32	239.43	8,346.8	-874.1	-99.6	879.6	0.01	0.01	
8,600.0	0.33	239.43	8,446.8	-874.4	-100.1	879.9	0.01	0.01	
8,700.0	0.34	239.43	8,546.8	-874.6	-100.6	880.3	0.01	0.01	
8,800.0	0.35	239.43	8,646.8	-875.0	-101.1	880.6	0.01	0.01	
8,900.0	0.36	239.43	8,746.8	-875.3	-101.6	881.0	0.01	0.01	
9,000.0	0.37	239.43	8,846.8	-875.6	-102.2	881.4	0.01	0.01	
9,100.0	0.38	239.43	8,946.8	-875.9	-102.7	881.7	0.01	0.01	
9,200.0	0.39	239.43	9,046.8	-876.3	-103.3	882.1	0.01	0.01	
9,300.0	0.40	239.43	9,146.8	-876.6	-103.9	882.5	0.01	0.01	

Cathedral Energy Services

Planning Report

Database:	EDM 5000.1 US Multi Users DB	Local Co-ordinate Reference:	Well NP EF01B-34 P27 595
Company:	EnCana Oil & Gas (USA) Inc	TVD Reference:	EF01B-34 P27 @ 6671.0ft (Original Well Elev)
Project:	North Piceance	MD Reference:	EF01B-34 P27 @ 6671.0ft (Original Well Elev)
Site:	P27 595 (S27-T5S-R95W)	North Reference:	True
Well:	NP EF01B-34 P27 595	Survey Calculation Method:	Minimum Curvature
Wellbore:	DD		
Design:	Plan# 2		

Planned Survey

Measured Depth (ft)	Inclination (°)	Azimuth (°)	Vertical Depth (ft)	+N/-S (ft)	+E/-W (ft)	Vertical Section (ft)	Dogleg Rate (°/100ft)	Build Rate (°/100ft)	Comments / Formations
9,400.0	0.41	239.43	9,246.8	-877.0	-104.5	883.0	0.01	0.01	
9,500.0	0.42	239.43	9,346.8	-877.4	-105.1	883.4	0.01	0.01	
9,600.0	0.43	239.43	9,446.8	-877.7	-105.8	883.8	0.01	0.01	
9,700.0	0.45	239.43	9,546.8	-878.1	-106.4	884.3	0.01	0.01	
9,800.0	0.46	239.43	9,646.8	-878.5	-107.1	884.8	0.01	0.01	
9,900.0	0.47	239.43	9,746.8	-878.9	-107.8	885.2	0.01	0.01	
10,000.0	0.48	239.43	9,846.8	-879.4	-108.5	885.7	0.01	0.01	
10,100.0	0.49	239.43	9,946.8	-879.8	-109.3	886.2	0.01	0.01	
10,153.2	0.49	239.43	10,000.0	-880.0	-109.7	886.5	0.01	0.01	Rollins (TVD) - P27 595 EF01B-34 BHL New
10,164.9	0.49	239.43	10,011.7	-880.1	-109.7	886.5	0.00	0.00	P27 595 EF01B-34 BHL
10,200.0	0.49	239.43	10,046.8	-880.2	-110.0	886.7	0.00	0.00	
10,253.2	0.49	239.43	10,100.0	-880.5	-110.4	887.0	0.00	0.00	Drillers TD @ 10,100' TVD

Targets

Target Name - hit/miss target - Shape	Dip Angle (°)	Dip Dir. (°)	TVD (ft)	+N/-S (ft)	+E/-W (ft)	Northing (ft)	Easting (ft)	Latitude	Longitude
P27 595 EF01B-34 TGT - plan hits target center - Point	0.00	0.00	5,440.0	-870.0	-92.7	1,644,984.70	2,285,963.30	39.576928	-108.033504
P27 595 EF01B-34 TGT - plan misses target center by 166.3ft at 6604.3ft MD (6451.1 TVD, -870.5 N, -93.5 E) - Point	0.00	0.00	6,451.0	-1,036.0	-77.1	1,644,818.33	2,285,974.27	39.576472	-108.033448
P27 595 EF01B-34 BHL - plan misses target center by 166.1ft at 10164.9ft MD (10011.7 TVD, -880.1 N, -109.7 E) - Rectangle (sides W30.0 H50.0 D0.0)	0.00	0.00	10,011.0	-1,046.0	-101.1	1,644,809.01	2,285,950.00	39.576444	-108.033533
P27 595 EF01B-34 BHL - plan hits target center - Rectangle (sides W30.0 H50.0 D0.0)	0.00	0.00	10,000.0	-880.0	-109.7	1,644,975.16	2,285,946.07	39.576900	-108.033564
Interp @ 3467.8 (NP EF - plan hits target center - Point	0.00	0.00	3,467.8	-277.0	197.7	1,645,569.38	2,286,270.08	39.578556	-108.032473

Formations

Measured Depth (ft)	Vertical Depth (ft)	Name	Lithology	Dip (°)	Dip Direction (°)
6,553.1	6,400.0	Williams Fork (TVD)			
6,593.1	6,440.0	Top of Gas (TVD)			
10,153.2	10,000.0	Rollins (TVD)			

Cathedral Energy Services

Planning Report

Database:	EDM 5000.1 US Multi Users DB	Local Co-ordinate Reference:	Well NP EF01B-34 P27 595
Company:	EnCana Oil & Gas (USA) Inc	TVD Reference:	EF01B-34 P27 @ 6671.0ft (Original Well Elev)
Project:	North Piceance	MD Reference:	EF01B-34 P27 @ 6671.0ft (Original Well Elev)
Site:	P27 595 (S27-T5S-R95W)	North Reference:	True
Well:	NP EF01B-34 P27 595	Survey Calculation Method:	Minimum Curvature
Wellbore:	DD		
Design:	Plan# 2		

Plan Annotations				
Measured Depth (ft)	Vertical Depth (ft)	Local Coordinates		Comment
		+N/-S (ft)	+E/-W (ft)	
200.0	200.0	0.0	0.0	KOP @ 200'
400.0	399.8	1.8	6.7	EOB; Inc=4°
900.0	898.6	10.8	40.4	Start Drop -2.00
1,100.0	1,098.5	12.6	47.2	EOD; Inc=0°
1,101.0	1,099.5	12.6	47.2	Start 2° Build @ 1101' MD
3,940.5	3,888.4	-10.3	67.9	EOB; Inc=24.6°
4,770.7	4,642.7	-118.8	166.1	Start Drop -3.00
5,593.1	5,440.0	-277.0	197.7	EOD; Inc=0°
10,253.2	10,100.0	-407.6	147.2	Drillers TD @ 10,100' TVD