

EXXONMOBIL CORPORATION

HOUSTON, Texas

PCU 296-5A4

H&P 321

## **Post Job Summary**

### **Cement Intermediate Casing**

Prepared for: George McNary  
Date Prepared: November 11, 2010  
Version: 1

Service Supervisor: DEARING, KEN

Submitted by: Joshua Anglin

**HALLIBURTON**

# HALLIBURTON

## Wellbore Geometry

Job Tubulars					MD		TVD		Excess	Shoe Joint Length ft
Type	Description	Size in	ID in	Wt lbm/ft	Top ft	Bottom ft	Top ft	Bottom ft	%	
Casing	Surface Casing	10.75	9.950	45.50	0.00	4,672.00	0.00	4,584.00		80.00
Open Hole Section	Intermediate Open Hole		9.875		4,672.00	10,004.00	4,584.00	9,965.00	100.00	
Casing	Intermediate Casing	7.00	6.276	26.00	0.00	9,992.00	0.00	9,886.00		98.99

## Pumping Schedule

Stage /Plug #	Fluid #	Fluid Type	Fluid Name	Surface Density lbm/gal	Avg Rate bbl/min	Surface Volume	Downhole Volume
1	1	Spacer	TUNED SPACER III	10.00	6.00	80.0 bbl	80.0 bbl
1	2	Cement Slurry	New Vernal Tuned Light	11.00	6.00	1335.0 sacks	1335.0 sacks
1	3	Spacer	Drilling Mud	0.00	0.00	374.0 bbl	374.0 bbl

# HALLIBURTON

## Fluids Pumped

---

**Stage/Plug # 1      Fluid 1:**      TUNED SPACER III  
TUNED SPACER III - SBM (483826)  
59.8 lbm/bbl      Barite

Fluid Density:      10.00 lbm/gal  
Fluid Volume:      80.00 bbl  
Pump Rate:      6.00 bbl/min

**Stage/Plug # 1      Fluid 2:**      New Vernal Tuned  
Light  
TUNED LIGHT (TM) SYSTEM  
0.7 lbm      HR-601

Fluid Weight:      11.00 lbm/gal  
Slurry Yield:      2.25 ft<sup>3</sup>/sack  
Total Mixing Fluid:      10.02 Gal  
Surface Volume:      1335.0 sacks  
Sacks:      1335.0 sacks  
Calculated Fill:      5,788.00 ft  
Calculated Top of Fluid:      4,177.00 ft  
Estimated Top of Fluid:  
Pump Rate:      6.00 bbl/min

**Stage/Plug # 1      Fluid 3:**      Drilling Mud  
DUMMY MUD / FLUSH / SPACER SBC MATERIAL

Fluid Density:      9.3 lbm/gal  
Fluid Volume:      374.00 bbl  
Pump Rate:      5.00 bbl/min

## Job Summary

---

### Job Information

Job Start Date	11/9/2010 2:00:00 AM
Job MD	9,992.0 ft
Job TVD	9,886.0 ft
Height of Plug Container/Swage Above Rig Floor	4.6 ft
Surface Temperature at Time of Job	32 degF
Mud Type	Water Based Mud
Name of Mud Company	BAROID
Actual Mud Density	9.3 lbm/gal
Time Circulated before job	4.00 hour(s)
Mud Volume Circulated	1,560.00 bbl
Rate at Which Well was Circulated	6.500 bbl/min
Pipe Movement During Hole Circulation	Reciprocated
Time From End Mud Circ. to Job Start	10.00 minute
Pipe Movement During Cementing	Reciprocated
Calculated Displacement	378.23 bbl
Job Displaced by (rig/halco)	Cement Unit HP Pumps
Annular flow Before Job? (Water/Gas)	No
Annular flow After Job? (Water/Gas)	No
Length of Rat Hole	12.00 ft

### Cementing Equipment

Number of Centralizers Used	52
Pipe Centralization	Through Entire Cement Column
Brand of Float Equipment Used	Weatherford GEMOCO
Did Float Equipment Hold?	Yes
Plug set used?	Yes
Brand of Plug set used?	Weatherford GEMOCO
Did Plugs Bump?	Yes
Calculated Pressure to Bump Plugs	1,055.0 psig
Did Stage Cementing Tool Open Properly?	Unknown

## Service Supervisor Reports

### Job Log

Date/Time	Chart #	Activity Code	Pump Rate	Cum Vol	Pump		Pressure (psig)		Comments
11/08/2010 13:00		Call Out							
11/08/2010 14:00		Pre-Convoy Safety Meeting							DISCUSS SAFETY AND HAZARDS OF TRAVEL.
11/08/2010 14:15		Other							LOAD EQUIPMENT FOR JOB AND CHECK OUT BULK TRUCK LOADS, WAIT FOR BULK TRUCKS TO BE LOADED.
11/08/2010 15:50		Depart Yard Safety Meeting							DISCUSS SAFETY AND HAZARDS OF TRAVEL.
11/08/2010 16:00		Crew Leave Yard							
11/08/2010 19:30		Arrive At Loc							
11/08/2010 19:35		Assessment Of Location Safety Meeting							SIGN IN AT SAFETY SHACK, GET WORK PERMIT SIGNED, WALK LOCATION, DISCUSS SPOTTING OF EQUIPMENT AND RIGGING UP, DISCUSS SAFETY AND HAZARDS.
11/08/2010 19:45		Safety Meeting							MEET WITH CO.MAN, GET WELL INFORMATION, DISCUSS WELL CONDITIONS, DISCUSS VPRESSURE TEST AND MAX PRESSURE, DISCUSS SAFETY AND HAZARDS, CASING AT 8492'.
11/08/2010 19:50		Safety Huddle							DISCUSS SAFETY VAND HAZARDS.
11/08/2010 19:55		Other							SPOT EQUIPMENT.
11/08/2010 20:10		Safety Meeting - Pre Rig-Up							DISCUSS SAFETY VAND HAZARDS.
11/08/2010 20:15		Rig-Up Equipment							RIG UP IRON AND SUCTION HOSE, TEST H2O.
11/08/2010 22:00		Prime Pumps							GET ALL EQUIPMENT READY FOR JOB.
11/08/2010 22:20		Pressure Test							PRE-JOB PRESSURE TEST.
11/08/2010 22:30		Casing on Bottom							

# HALLIBURTON

Date/Time	Chart #	Activity Code	Pump Rate	Cum Vol	Pump		Pressure (psig)	Comments
11/08/2010 22:30		Circulate Well						RIG STARTS TO CIRCULATE WELL.
11/08/2010 22:35		Safety Meeting						MEET WITH CO.MAN, GO OVER CALCULATIONS, DISCUSS JOB PROCEDURE, DISCUSS CONTINGENCIES, DISCUSS SAFETY AND HAZARDS.
11/08/2010 22:55		Safety Meeting - Pre Rig-Up						DISCUSS SAFETY AND HAZARDS.
11/08/2010 23:00		Rig-Up Equipment						RIG UP TO RIG FLOOR AND RIG UP THE REST OF THE IRON IRON.
11/08/2010 23:45		Other						LOAD PLUG INTO CEMENT HEAD WITH CO.MAN.
11/09/2010 00:30		Other						RIG SHUTS DOWN, START RIGGING DOWN CRT AND RIGGING UP BALES AND ELEVATORS.
11/09/2010 00:45		Safety Meeting - Pre Rig-Up						DISCUSS SAFETY AND HAZARDS.
11/09/2010 00:50		Rig-Up Equipment						RIG UP CEMENT HEAD TO CASING.
11/09/2010 00:55		Circulate Well						RIG CIRCULATE THROUGH HES CEMENT HEAD.
11/09/2010 01:05		Safety Meeting - Pre Job						SAFETY MEETING WITH RIG CREW AND CO.MAN, DISCUSS JOB PROCEDURES, DISCUSS SAFETY AND HAZARDS.
11/09/2010 01:30		Safety Meeting - Pre Rig-Up						DISCUSS SAFETY AND HAZARDS.
11/09/2010 01:35		Rig-Up Equipment						RIG UP IRON ON RIG FLOOR.
11/09/2010 01:50		Safety Meeting - Pre Rig-Up						DISCUSS SAFETY AND HAZARDS.
11/09/2010 01:55		Rig-Up Equipment						RIG SHUTS DOWN, RIG UP IRON TO CEMENT HEAD.
11/09/2010 01:55		Other						RECHECK EQUIPMENT.
11/09/2010 02:11		Pump Water	4	10			400.0	PUMP 1 BBL OF WATER TO FILL LINES AND ESTABLISH CIRCULATION.
11/09/2010 02:15		Pressure Test					350.0	START LOW PRESSURE TEST AT 406 PSI AND END AT 375 PSI. LOST 31 PSI IN 3 MINUTES

# HALLIBURTON

Date/Time	Chart #	Activity Code	Pump Rate	Cum Vol	Pump		Pressure (psig)	Comments
11/09/2010 02:19		Pressure Test					5200.0	START HIGH PRESSURE TEST AT 5221 PSI AND END AT 5129 PSI, LOST, 92 PSI IN 3 MINUTES
11/09/2010 02:27		Pump Spacer	2	80			110.0	START PUMPING 10.0# TUNED SPACER.
11/09/2010 02:30		Other	3				290.0	WELL CIRCULATING, INCREASE AS PER CO.MAN.
11/09/2010 02:31		Other	5				500.0	INCREASE RATE AS PER CO.MAN.
11/09/2010 02:45		Slow Rate	1				140.0	SLOW RATE TO DROP PLUG.
11/09/2010 02:47		Drop Plug	1				140.0	DROP BOTTOM PLUG ON THE FLY AS PER CO.MAN, START MIXING CEMENT.
11/09/2010 02:47		Pump Cement	2	525.5			215.0	START PUMPING 11.0# TUNED LIGHT CEMENT, 525.5bbls, 1335sks, 2.21cf/ft, 9.67gal/sk, INCREASE RATE.
11/09/2010 02:48		Other	5				700.0	INCREASE RATE AS PER CO.MAN.
11/09/2010 03:25		Other	6				650.0	INCREASE RATE, AS PER CO.MAN..
11/09/2010 03:56		Slow Rate	5				520.0	RETURNS TO PIT SLOWS, SLOW RATE AS PER CO.MAN.
11/09/2010 03:58		Slow Rate	3				300.0	RETURNS TO PIT SLOWS, SLOW RATE AS PER CO.MAN.
11/09/2010 04:02		Other	5				470.0	RETURNS INCREASE, INCREASE RATE AS PER CO.MAN.
11/09/2010 04:33		Slow Rate	2				210.0	SLOW RATE TO DROP PLUG
11/09/2010 04:35		Drop Top Plug	2				200.0	DROP TOP PLUG ON THE FLY AS PER CO.MAN.
11/09/2010 04:36		Pump Displacement - Start	2				200.0	START H2O DISPLACEMENT, WASHING ON TOP OF PLUG AS PER CO.MAN.
11/09/2010 04:37		Other	6				300.0	INCREASE RATE, AS PER CO.MAN..
11/09/2010 05:24		Slow Rate	4				1035.0	SLOW RATE AS PER CO.MAN.
11/09/2010 05:38		Other	6				1480.0	INCREASE RATE, AS PER CO.MAN..
11/09/2010 05:42		Slow Rate	2				1110.0	SLOW RATE AS PER CO.MAN.
11/09/2010 05:46		Bump Plug	2				1110.0	BUMP PLUG AT 1110psi.

# HALLIBURTON

Date/Time	Chart #	Activity Code	Pump Rate	Cum Vol	Pump		Pressure (psig)	Comments
11/09/2010 05:46		Shutdown					2000.0	PRESSURE 890psi OVER TO 2000psi AS PER CO.MAN-SHUT DOWN, RECORDED 361 BBL OF 9.3 PPG, PV:19, YP:11, 8/19/21. DESIGN VOLUME WAS 365.6 BBL.
11/09/2010 05:49		Check Floats						CHECK FLOATS-FLOATS HOLD, 3bbls BACK.
11/09/2010 05:55		Post-Job Safety Meeting (Pre Rig-Down)						DISCUSS JOB, DISCUSS BBP AND HOC OBSERVATIONS, DISCUSS SAFETY AND HAZARDS.
11/09/2010 06:10		Rig-Down Equipment						RIG IRON OFF OF RIG FLOOR.
11/09/2010 06:15		Safety Huddle						DISCUSS SAFETY AND HAZARDS.
11/09/2010 06:20		Other						WASH UP RCM TO PIT AND BLOW SILOS OFF ONTO BULK TRUCK.
11/09/2010 07:10		Safety Meeting - Pre Rig-Down						DISCUSS SAFETY AND HAZARDS.
11/09/2010 07:15		Rig-Down Equipment						RIG DOWN AND RACK UP IRON AND SUCTION HOSE.
11/09/2010 11:15		Pre-Convoy Safety Meeting						DISCUSS SAFETY AND HAZARDS OF TRAVEL.
11/09/2010 11:30		Crew Leave Location						
11/09/2010 11:30		Other						THANK YOU-KEN, KYLE, AND CREW.



## The Road to Excellence Starts with Safety

<b>Sold To #:</b> 331699		<b>Ship To #:</b> 2751710		<b>Quote #:</b>		<b>Sales Order #:</b> 7750694	
<b>Customer:</b> EXXONMOBIL CORPORATION				<b>Customer Rep:</b> CURTIS, CANDACE			
<b>Well Name:</b> PCU			<b>Well #:</b> 296-5A4			<b>API/UWI #:</b> 05103112450000	
<b>Field:</b>		<b>City (SAP):</b> MEEKER		<b>County/Parish:</b> Rio Blanco		<b>State:</b> Colorado	
<b>Legal Description:</b> Section 5 Township 2S Range 96W							
<b>Contractor:</b> H&P			<b>Rig/Platform Name/Num:</b> 321				
<b>Job Purpose:</b> Cement Intermediate Casing							
<b>Well Type:</b> Development Well			<b>Job Type:</b> Cement Intermediate Casing				
<b>Sales Person:</b> TURNER, JAMIE			<b>Srvc Supervisor:</b> DEARING, KEN			<b>MBU ID Emp #:</b> 239372	

### Job Personnel

HES Emp Name	Exp Hrs	Emp #	HES Emp Name	Exp Hrs	Emp #	HES Emp Name	Exp Hrs	Emp #
DEAN, MARK Christophe	16.0	454214	DEARING, KEN A	16.0	239372	DUBE, MTHOKOZISI	6.0	476241
ESTEP, KENNETH	8.5	121420	JENSEN, RICKY D	16.0	482815	KING, KYLE Endres	6.0	465538
WALSH, JAMES Ronald	16.0	457722	WEYERMAN, JEREMY Todd	16.0	477287			

### Equipment

HES Unit #	Distance-1 way	HES Unit #	Distance-1 way	HES Unit #	Distance-1 way	HES Unit #	Distance-1 way
111263211	140 Mile	10897817	140 Mile	10872435	140 mile	10948686	140 Mile
10638378	140 Mile	11061775	140 Mile	11410662	140 Mile	10982756	140 Mile
10991613	140 Mile	10572545	140 Mile				

### Job Hours

Date	On Location Hours	Operating Hours	Date	On Location Hours	Operating Hours	Date	On Location Hours	Operating Hours
11-08-2010	4.5	0	11-09-2010	11.5	4			

**TOTAL** Total is the sum of each column separately

### Job

Formation Name	Top	Bottom	Called Out	Date	Time	Time Zone
Formation Depth (MD)			On Location	08 - Nov - 2010	13:00	CST
Form Type		BHST	On Location	08 - Nov - 2010	19:30	CST
Job depth MD	9965. ft	Job Depth TVD	Job Started	09 - Nov - 2010	02:00	CST
Water Depth		Wk Ht Above Floor	Job Completed	09 - Nov - 2010	06:00	CST
Perforation Depth (MD)	From	To	Departed Loc	09 - Nov - 2010	11:30	CST

### Well Data

Description	New / Used	Max pressure psig	Size in	ID in	Weight lbm/ft	Thread	Grade	Top MD ft	Bottom MD ft	Top TVD ft	Bottom TVD ft
Intermediate Open Hole				9.875				4672.	10004.	4584.	9965.
Intermediate Casing	New		7.	6.276	26.	HYDRIL - SERIES 500 TYPE 513	P-110	.	9992.	.	9886.
Surface Casing	Unknown		10.75	9.95	45.5	BTC	J-55	.	4672.	.	4584.

### Tools and Accessories

Type	Size	Qty	Make	Depth	Type	Size	Qty	Make	Depth	Type	Size	Qty	Make
EZ Case bit	8.5	1		9988.5	Packer					Top Plug	7	1	Weather
Float Collar	7	1	Weath	9986.7	Bridge Plug					Bottom Plug	7	1	Weather
Float Collar	7	1	Weath	9893.0	Retainer					SSR plug set			
Insert Float										Plug Container	7	1	HES

Stage Tool										Centralizers	7	52	Weather
<b>Miscellaneous Materials</b>													
Gelling Agt		Conc		Surfactant		Conc		Acid Type		Qty		Conc	%
Treatment Fld		Conc		Inhibitor		Conc		Sand Type		Size		Qty	

Fluid Data									
Stage/Plug #: 1									
Fluid #	Stage Type	Fluid Name	Qty	Qty uom	Mixing Density lbm/gal	Yield ft3/sk	Mix Fluid Gal/sk	Rate bbl/min	Total Mix Fluid Gal/sk
1	TUNED SPACER III	TUNED SPACER III - SBM (483826)	80.00	bbl	10.	.0	.0	5.0	
	38.32 gal/bbl	FRESH WATER							
	59.8 lbm/bbl	BARITE, 100 LB SK (100003680)							
2	New Vernal Tuned Light	TUNED LIGHT (TM) SYSTEM (452984)	1335.0	sacks	11.	2.25	10.02	5.0	10.02
	0.7 lbm	HR-601, 50 LB BAG (101328348)							
	10.02 Gal	FRESH WATER							
3	Fresh Water		374.00	bbl	8.4	.0	.0	5.0	
Calculated Values		Pressures		Volumes					
Displacement	378.1	Shut In: Instant	2000	Lost Returns		Cement Slurry	525.5	Pad	
Top Of Cement	4240	5 Min	2065	Cement Returns	0	Actual Displacement	374	Treatment	
Frac Gradient		15 Min		Spacers	0	Load and Breakdown		Total Job	
Rates									
Circulating	5	Mixing	5	Displacement	5	Avg. Job	5		
Cement Left In Pipe	Amount	98.99 ft	Reason	Shoe Joint					
Frac Ring # 1 @	ID	Frac ring # 2 @	ID	Frac Ring # 3 @	ID	Frac Ring # 4 @	ID		
The Information Stated Herein Is Correct				Customer Representative Signature					

# HALLIBURTON

## Lab Data

# HALLIBURTON

## Cementing Rockies, Vernal

## LAB RESULTS - Primary

### Job Information

Request/Slurry	108235/2	Rig Name	H&P 321	Date	November 11, 2010
Submitted By	Isaac Whorl	Job Type	Intermediate Casing	Bulk Plant	Vernal
Customer	ExxonMobil	Location	Rio Blanco	Well	PCU 296-5A4

### Well Information

Casing/Liner Size	7"	Depth MD	9965 ft	BHST	210 F
Hole Size	9 7/8"	Depth TVD	9965 ft	BHCT	154 F

### Cement Information - Primary Design

Conc	UOM	Cement/Additive	Sample Type	Sample Date	Lot No.	Cement Properties		
		Tuned Light				Slurry Density	11.00	PPG
100.00	% BWOC	Cement Blend	Bulk	Nov 04, 2010		Slurry Yield	2.21	FT3
36.88	%	> Boral Craig Pozmix	Bulk	Nov 04, 2010		Water Requirement	9.67	GPS
11	%	> HGS 6000 dry blended	Bulk	Nov 04, 2010				
53.19	%	> Holcim Type V	Bulk	Nov 04, 2010				
13	%	> Silicalite - Compacted	Bulk	Nov 04, 2010				
0.70	lb/sk	HR-601	Bulk	Nov 04, 2010	22HR07X06	Water Source	Fresh Water	
0.50	lb/sk	D-Air 3000	Bulk	Nov 04, 2010	S3GW	Water Chloride	N/A	ppm
0.20	lb/sk	FWCA	Bulk	Nov 04, 2010	29191239A			
80.73	L/100kg	Fresh Water	Lab	Aug 27, 2010	C			
					37340			

### Operation Test Results Request ID 108235/2

#### Thickening Time, Request Test ID:1130018, Historical Data

Temp (°F)	Pressure (psi)	Reached in (min)	Start BC	30 Bc (hh:mm)	50 Bc (hh:mm)	70 Bc (hh:mm)	100 Bc (hh:mm)
154	5,468	60	7	04:31	04:49	05:14	06:52

### Operation Test Results Request ID 108235/1

#### UCA Comp. Strength, Request Test ID:1123345, Historical Data

End Temp (°F)	Pressure (psi)	50 psi (hh:mm)	500 psi (hh:mm)	8 hr CS (psi)	12 hr CS (psi)	16 hr CS (psi)	24 hr CS (psi)	48 hr CS (psi)	End CS (psi)	End Time (hrs)
191	3,000	05:45	07:42	641	1,332	1,396	1,437	1,458	1,475	72

#### Free Water, Request Test ID:1123347, Historical Data

Test Temp (°F)	% FW 45 Inc
154	0
No free water and no settling.	

#### API Rheology, Request Test ID:1123346, Historical Data

Temp (°F)	600	300	200	100	60	30	6	3	Cond Time (min)	PV/YP
80	216	128	96	62	49	41	34	26	0	99.3 / 31.2

## API Fluid Loss, Request Test ID:1123348, Historical Data

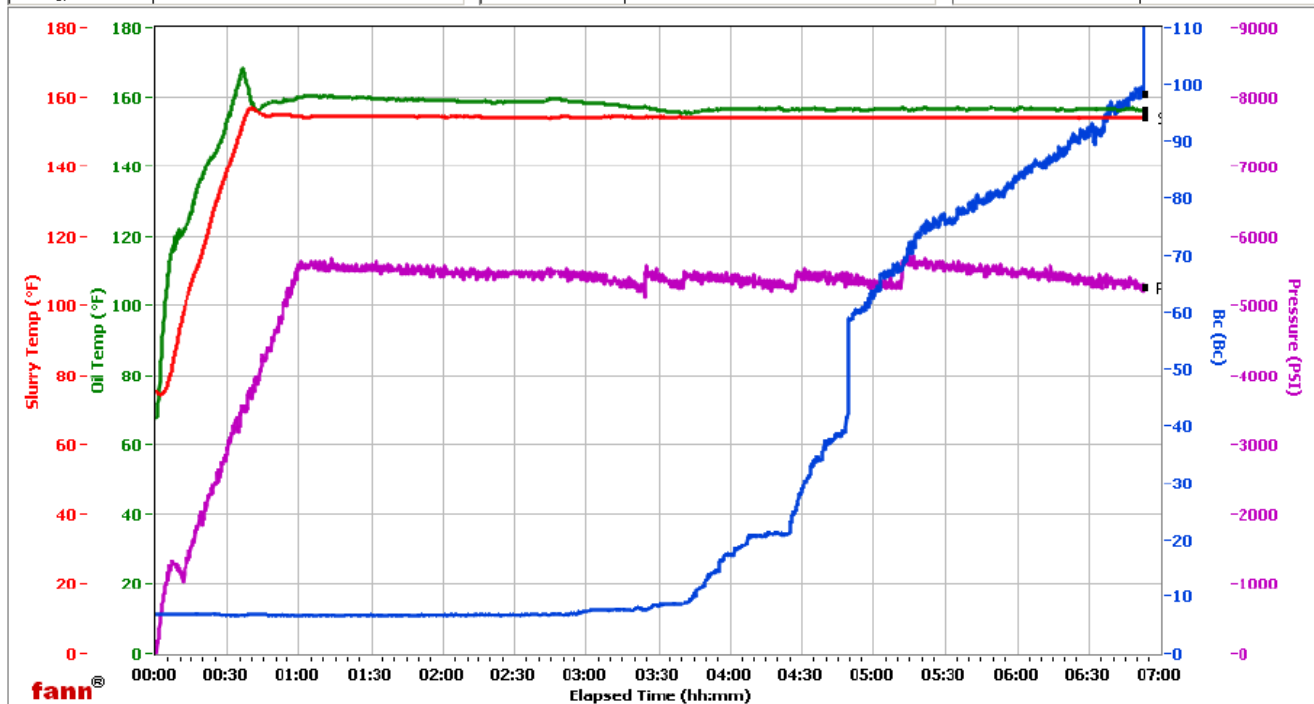
Test Temp (°F)	Test Pressure (psi)	Test Time (min)	Meas. Vol (< 30 min, cc)	Extr. ISO FL (cc/30 min)	Conditioning time (min)
154	1,000	7	44	182	30

### Vernal

Fields	Values
Project Name	ExxonMobil 108235-2
Test ID	108235-2
Request ID	HPHT#2
Tested by	BSH
Customer	ExxonMobil
Well No	PCU 296-5A4
Rig	H&P 321
Casing/Liner Size	7

Fields	Values
Job Type	Intermediate Primary
Cement Type	VTL
Cement Weight	Light Weight
Test Date	11/04/10
Test Time	03:10 PM
Temp. Units	degF
Pressure Units	PSI

Events	Results
30.00 Bc	04h:31m
50.00 Bc	04h:49m
60.00 Bc	04h:52m
70.00 Bc	05h:14m
100.00 Bc	06h:52m
200.00 Bc	NaN
03h:00m	7.39
06h:00m	83.63



Data File O:\HPHT Data Files\Vernal Consistometer #2\ExxonMobil 108235-2.tdms

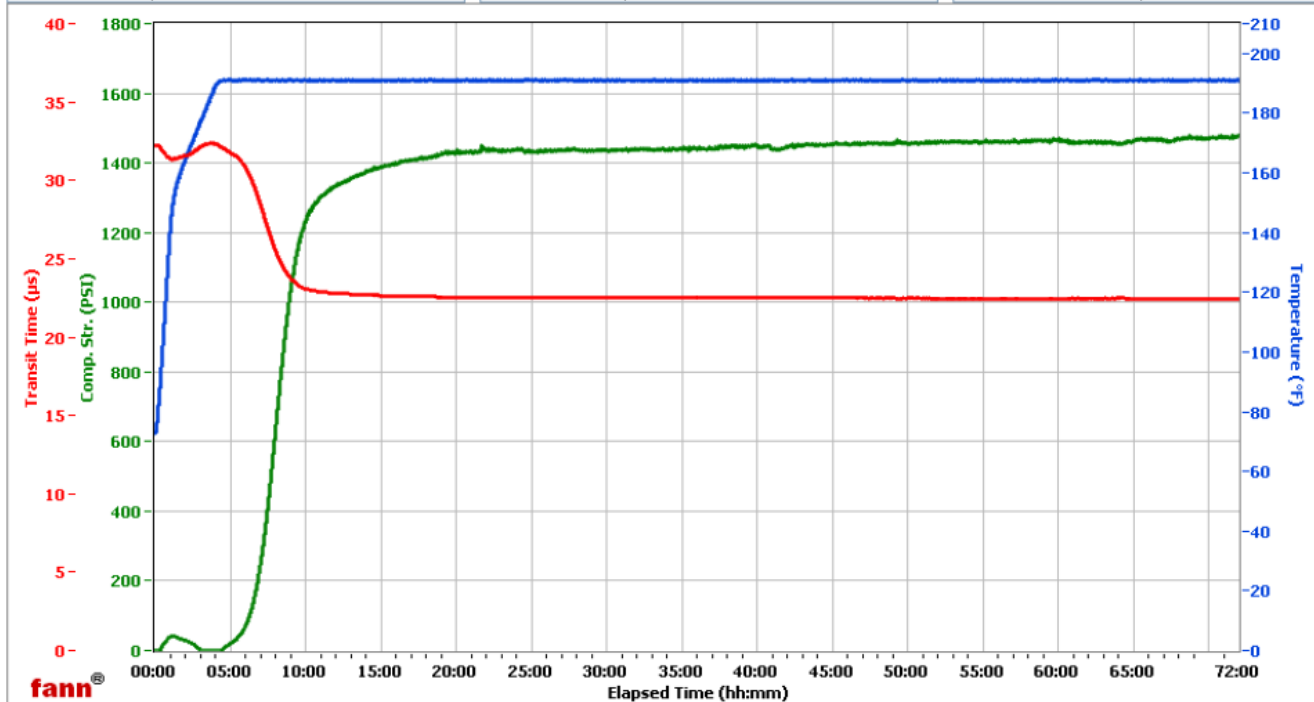
Comments VTL, 0.7#HR-601, 11.0 density, 2.21 yield

## Vernal

Fields	Values
Project Name	ExxonMobil 108235-1
Test ID	108235-1
Request ID	UCA 4
Tested by	vmc
Customer	ExxonMobil
Well No	PCU 296-5A4
Rig	H&P 321
Casing/Liner Size	7

Fields	Values
Job Type	Intermediate Primary
Cement Type	Tuned Light
Cement Weight	Light Weight
Test Date	11/3/2010
Test Time	7:55 PM
Temp. Units	degF
Pressure Units	PSI

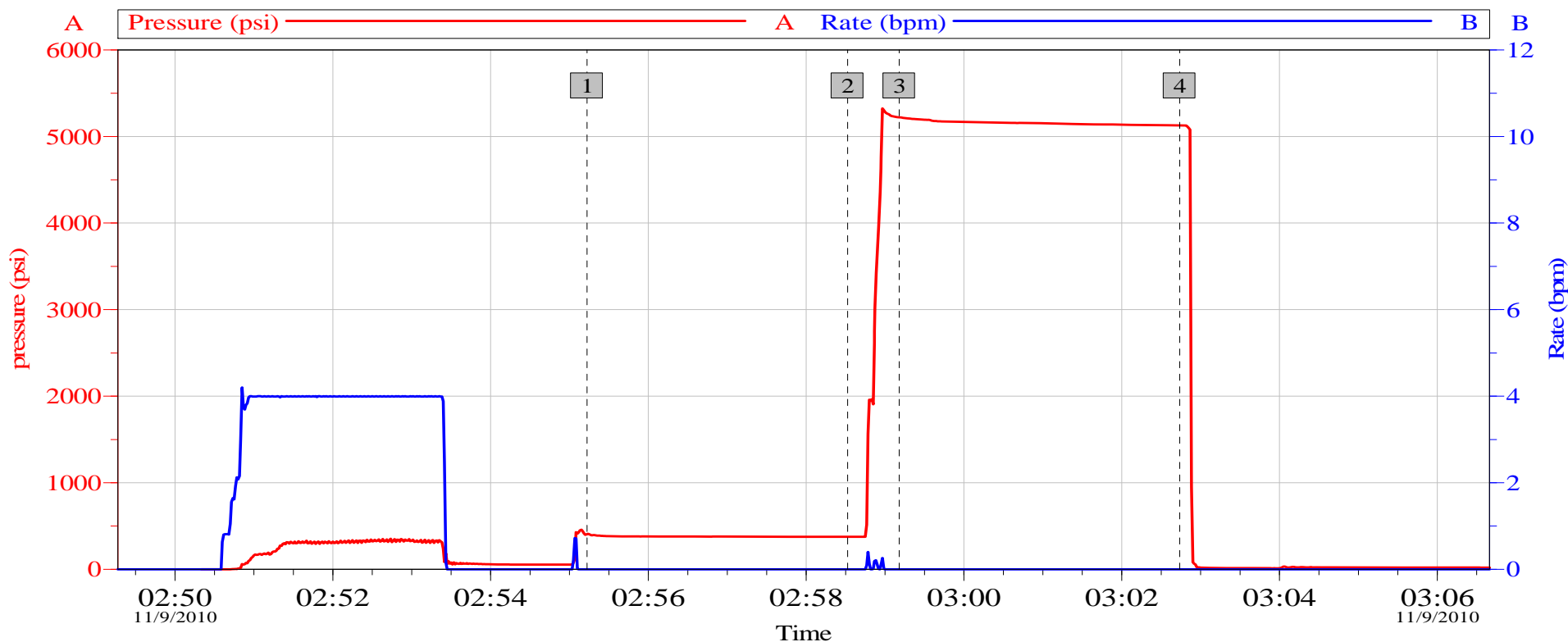
Events	Results
50.00 PSI	05h:45m
100.00 PSI	06h:17m
500.00 PSI	07h:42m
1000.00 PSI	08h:54m
12h:00m	1332.14
24h:00m	1437.16
48h:00m	1457.70
72h:00m	1474.88



Data File C:\Data Files\108235-1.tdms

Comments Tuned Light, 0.7# HR-601, 11 Den, 2.21 Yd

### XOM PCU 296-5A4 Intermediate Pressure Test

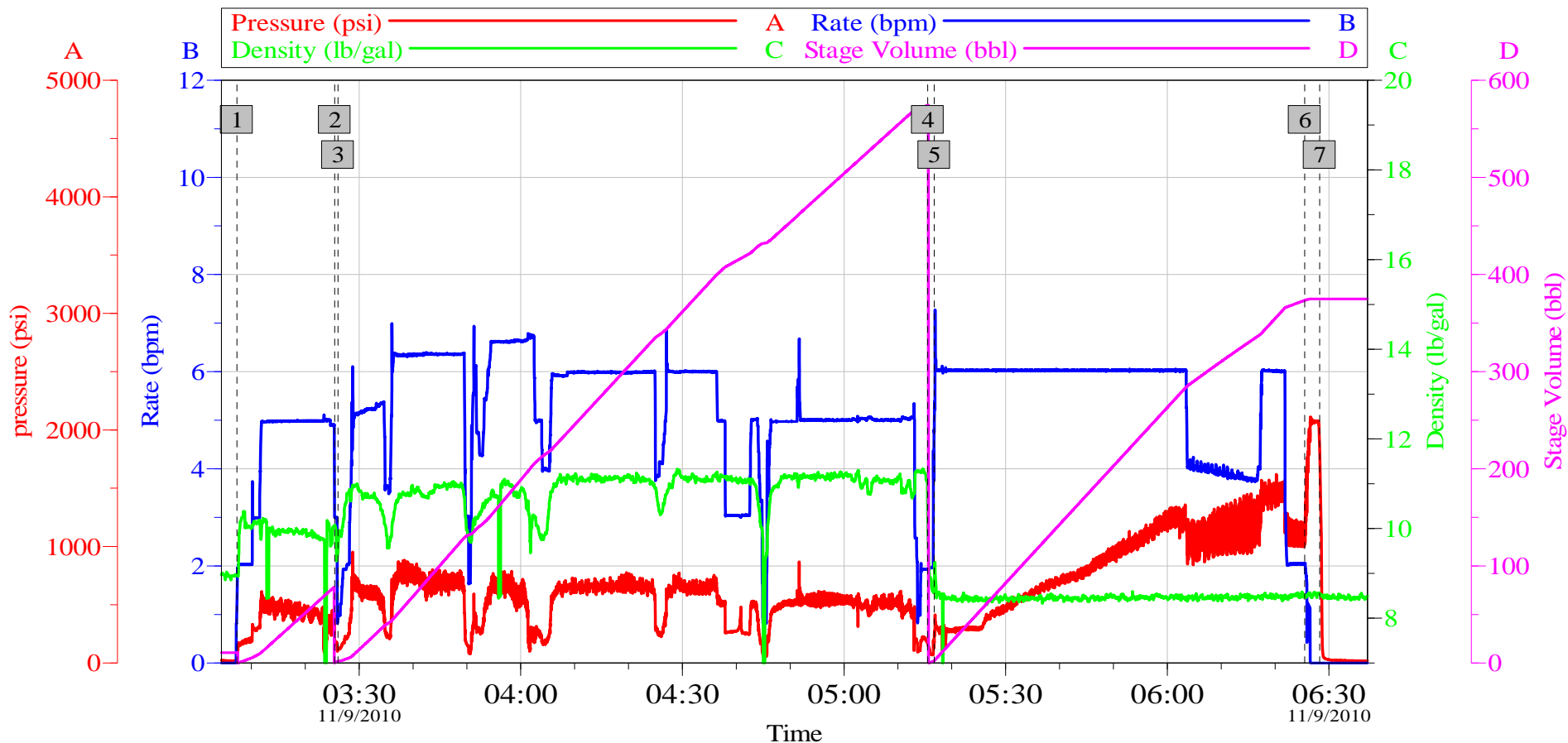


Job Log			
Intersection		PSI	Intersection
1	Start Low Pressure Test	02:55:13 406.6	2
			End Low Pressure Test
3	Start High Pressure Test	02:59:11 5221	4
			End High Pressure Test
			03:02:44 5129

Customer:	ExxonMobile	Job Date:	08-Nov-2010	Sales Order #:	22:37:00
Well Description:	PCU 296-5A4	UWI:	05-103-11245	Rig:	H&P 321

OptiCem v6.4.9  
09-Nov-10 08:58

## XOM PCU 296-5A4 Intermediate



### Job Log

1 TS III 10.0#	03:07:19	2 Drop Bottom Plug	03:25:29	3 Primary Cement 11.0#	03:26:05
4 Water Displacement	05:15:33	5 Drop Top Plug	05:16:44	6 Bump Plug	06:25:31
7 Check Floats	06:28:17				

Customer: ExxonMobile  
 Well Description: PCU 296-5A4

Job Date: 08-Nov-2010  
 UWI: 05-103-11245

Sales Order #: 22:37:00  
 Rig: H&P 321

OptiCem v6.4.9  
 09-Nov-10 08:52