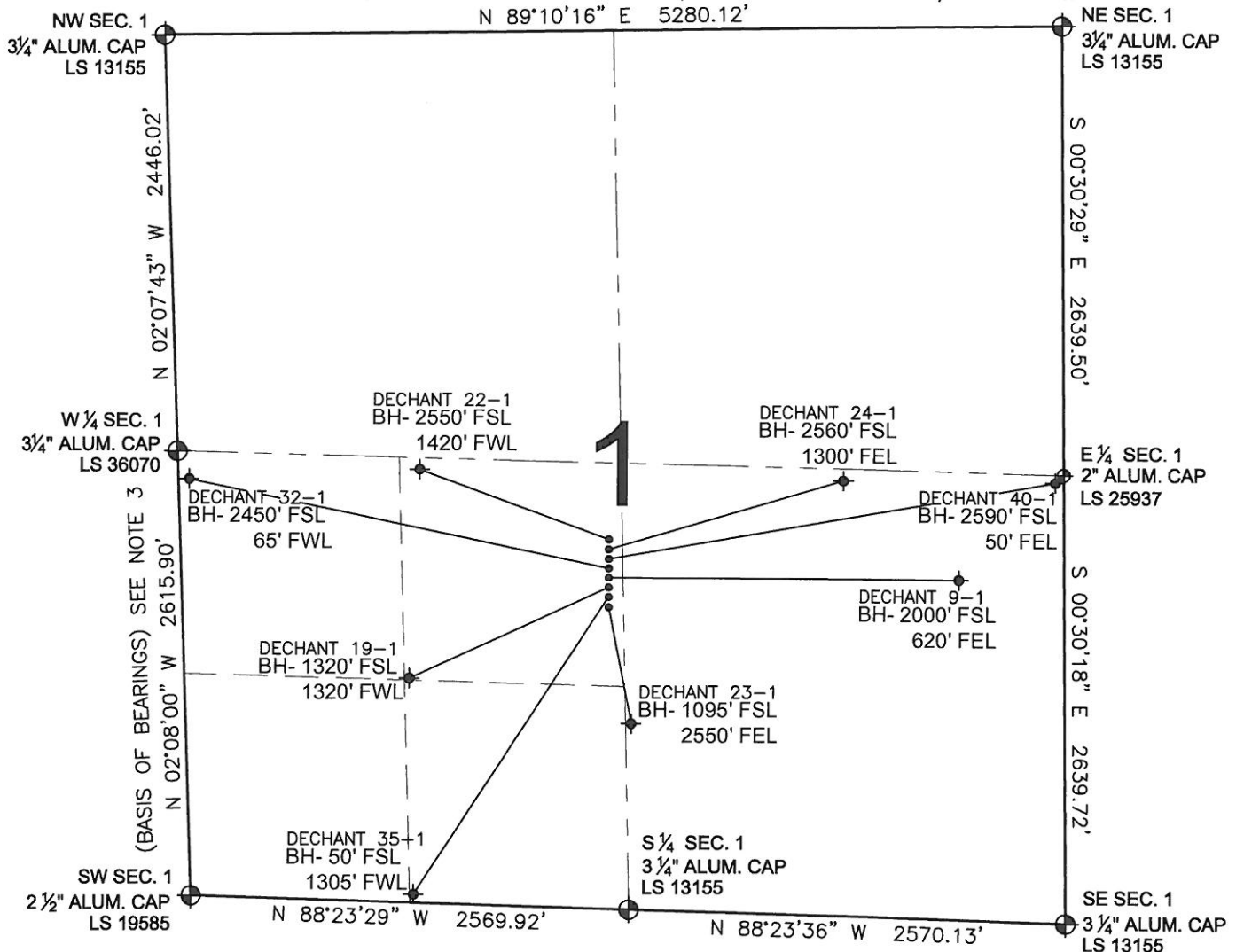


PAD DRAWING - DECHANT 8 PAD

SECTION 1, TOWNSHIP 2 NORTH, RANGE 65 WEST, 6TH P.M.



LEGEND

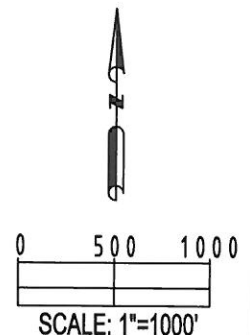
- = EXISTING MONUMENT
 = BOTTOM HOLE
 BH= BOTTOM HOLE
 = PROPOSED WELL
 = EXISTING WELL

NOTES:

- THIS SURVEY WAS DONE BY GPS METHODS AND CONFORMS TO THE MINIMUM STANDARDS SET BY THE C.O.G.C.C., RULE NO. 215
- ELEVATIONS SHOWN AT THE WELL HEAD, AS WELL AS HORIZONTAL CONTROL, ARE BASED ON GPS-RTK VALUES DERIVED FROM DOING 2-HOUR STATIC GPS SESSIONS AND REDUCTIONS USING O.P.U.S. SOLUTIONS.
VERTICAL = NAVD88; HORIZONTAL = NAD83/92
- THE BEARINGS SHOWN HEREON ARE BASED ON GPS OBSERVATIONS BETWEEN THE MONUMENTS SHOWN HEREON AS FOUND ON THE FIELD DATE BELOW.
- DISTANCES SHOWN ARE AT GROUND LEVEL, AS MEASURED IN THE FIELD, WITH TIES TO WELLS MEASURED AT A PERPENDICULAR TO SECTION LINES.

NOTES:

- DECHANT 22-1 TO BE AT 2174' FSL, 2518' FWL.
 BOTTOM HOLE AT 2550' FSL & 1420' FWL.
 DECHANT 24-1 TO BE AT 2164' FSL, 2517' FWL.
 BOTTOM HOLE AT 2560' FSL & 1300' FEL.
 DECHANT 40-1 TO BE AT 2154' FSL, 2517' FWL.
 BOTTOM HOLE AT 2590' FSL & 50' FEL.
 DECHANT 32-1 TO BE AT 2144' FSL, 2517' FWL.
 BOTTOM HOLE AT 2450' FSL & 65' FWL.
 DECHANT 9-1 TO BE AT 2134' FSL, 2517' FWL.
 BOTTOM HOLE AT 2000' FSL & 620' FEL.
 DECHANT 19-1 TO BE AT 2124' FSL, 2516' FWL.
 BOTTOM HOLE AT 1320' FSL & 1320' FWL.
 DECHANT 35-1 TO BE AT 2114' FSL, 2516' FWL.
 BOTTOM HOLE AT 50' FSL & 1305' FWL.
 DECHANT 23-1 TO BE AT 2104' FSL, 2516' FWL.
 BOTTOM HOLE AT 1095' FSL & 2550' FEL.



REVISIONS

INITIAL	DATE

PREPARED BY:

PFS

Petroleum Field Services, LLC
1801 W. 13th Ave.
Denver, CO 80204



KERR-MCGEE OIL & GAS ONSHORE LP

FIELD DATE:

08-26-10

PAD NAME:

DECHANT 8 PAD

DRAWING DATE:

09-02-10

SURFACE LOCATION:

BY:

SMF

WELD COUNTY, COLORADO

NE 1/4 SW 1/4, SEC. 1, T2N, R65W