



ANADARKO PETROLEUM CORP.

ANADARKO COLORADO NORTHERN ZONE NAD 83

REI 17-17

REI 24-17

24-17

Plan: REI 24-17 (wp01)

Standard Planning Report

25 October, 2010





Project: ANADARKO COLORADO NORTHERN ZONE NAD 83
 Site: REI 17-17
 Well: REI 24-17
 Wellbore: 24-17
 Section:
 SHL:
 Design: REI 24-17 (wp01)
 Latitude: 40° 13' 46.293 N
 Longitude: 104° 41' 1.032 W
 GL: 4898.0
 KB: WELL @ 4898.0ft (Original Well Elev)



Weatherford



Azimuths to True North
 Magnetic North: 8.85°

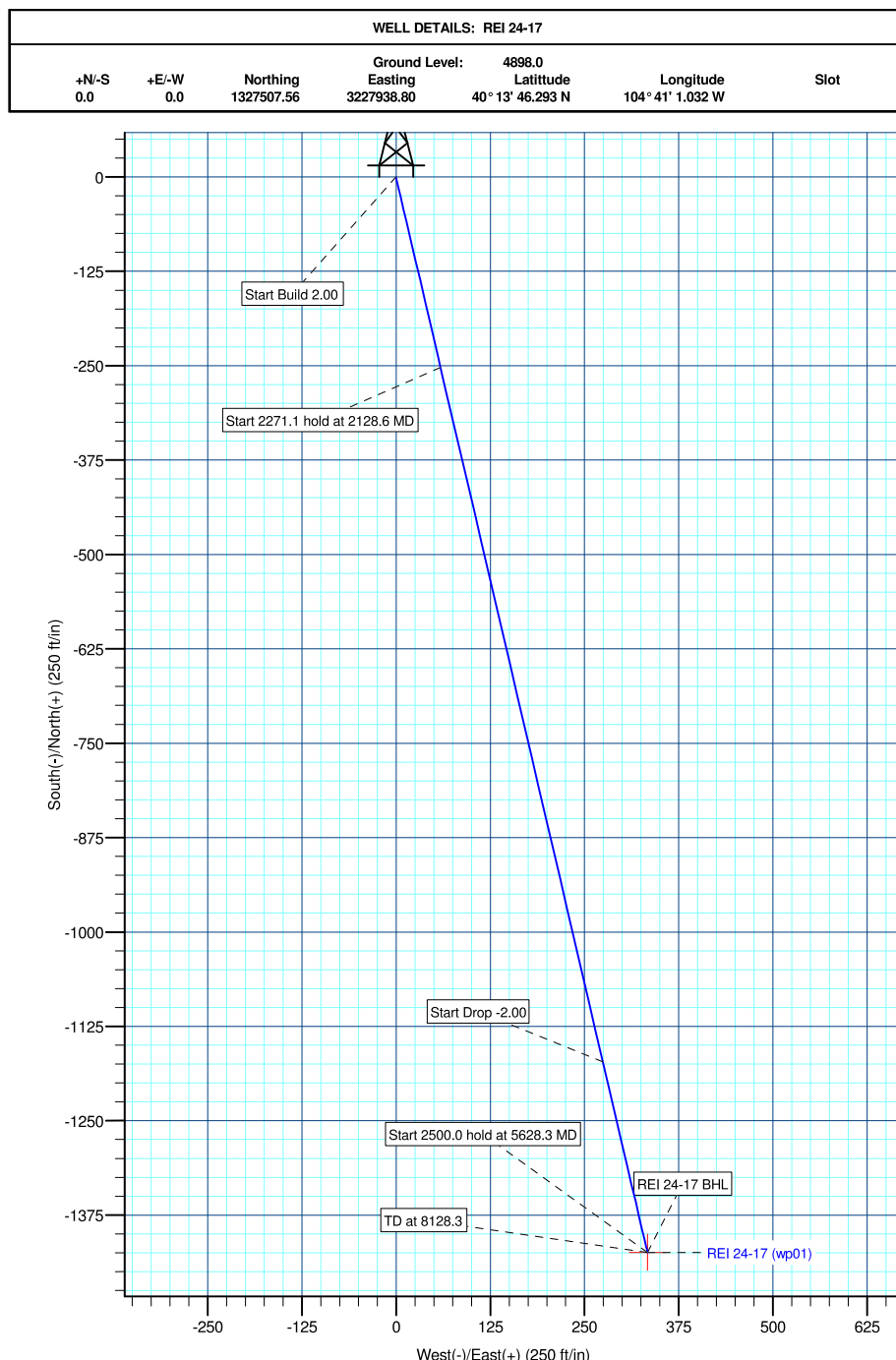
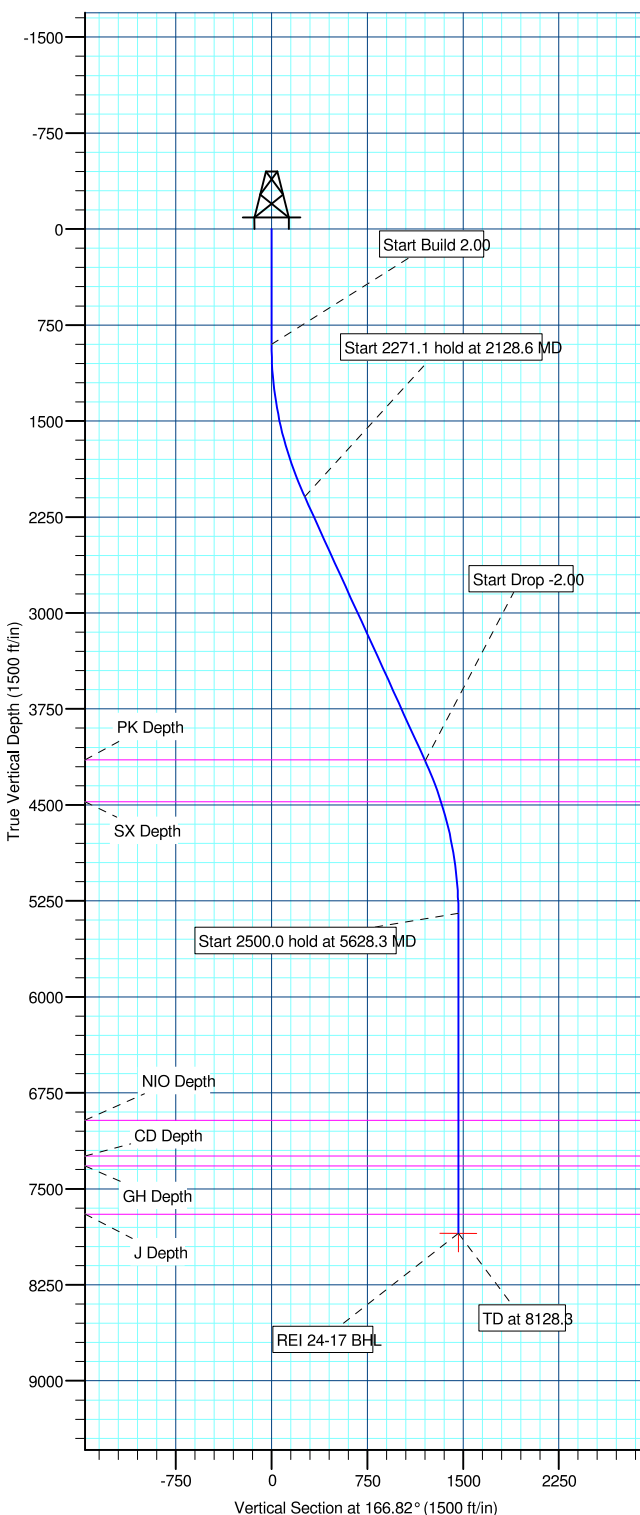
Magnetic Field
 Strength: 53099.1snT
 Dip Angle: 66.96°
 Date: 10/25/2010
 Model: BGGM2010

FORMATION TOP DETAILS

TVDPath	MDPath	Formation
4148.0	4390.1	PK Depth
4475.0	4741.2	SX Depth
6965.0	7245.3	NIO Depth
7244.0	7524.3	CD Depth
7322.0	7602.3	GH Depth
7698.0	7978.3	J Depth

SECTION DETAILS

MD	Inc	Azi	TVD	+N/-S	+E/-W	DLeg	TFace	VSec	Annotation
0.0	0.00	0.00	0.0	0.0	0.0	0.00	0.00	0.0	
900.0	0.00	0.00	900.0	0.0	0.0	0.00	0.00	0.0	Start Build 2.00
2128.6	24.57	166.82	2091.3	-252.6	59.2	2.00	166.82	259.4	Start 2271.1 hold at 2128.6 MD
4399.7	24.57	166.82	4156.7	-1172.1	274.5	0.00	0.00	1203.8	Start Drop -2.00
5628.3	0.00	0.00	5348.0	-1424.7	333.7	2.00	180.00	1463.3	Start 2500.0 hold at 5628.3 MD
8128.3	0.00	0.00	7848.0	-1424.7	333.7	0.00	0.00	1463.3	TD at 8128.3



Plan: REI 24-17 (wp01) (REI 24-17/24-17)

Created By: Jason Daguitera Date: 10:32, October 25 2010

Database:	EDM 2003.21 Single User Db	Local Co-ordinate Reference:	Well REI 24-17
Company:	ANADARKO PETROLEUM CORP.	TVD Reference:	WELL @ 4898.0ft (Original Well Elev)
Project:	ANADARKO COLORADO NORTHERN ZONE NAD 83	MD Reference:	WELL @ 4898.0ft (Original Well Elev)
Site:	REI 17-17	North Reference:	True
Well:	REI 24-17	Survey Calculation Method:	Minimum Curvature
Wellbore:	24-17		
Design:	REI 24-17 (wp01)		

Project	ANADARKO COLORADO NORTHERN ZONE NAD 83, ROCKIES, ROCKIES		
Map System:	US State Plane 1983	System Datum:	Mean Sea Level
Geo Datum:	North American Datum 1983		
Map Zone:	Colorado Northern Zone		

Site		REI 17-17			
Site Position:		Northing:	1,327,522.82ft	Latitude:	40° 13' 46.445 N
From:	Lat/Long	Easting:	3,227,933.36ft	Longitude:	104° 41' 1.100 W
Position Uncertainty:	0.0 ft	Slot Radius:	"	Grid Convergence:	0.53 °

Well	REI 24-17					
Well Position	+N/-S	-15.3 ft	Northing:	1,327,507.56 ft	Latitude:	40° 13' 46.293 N
	+E/-W	5.3 ft	Easting:	3,227,938.80 ft	Longitude:	104° 41' 1.032 W
Position Uncertainty		0.0 ft	Wellhead Elevation:	ft	Ground Level:	4,898.0ft

Wellbore	24-17				
Magnetics	Model Name	Sample Date	Declination (°)	Dip Angle (°)	Field Strength (nT)
	BGGM2010	10/25/2010	8.85	66.96	53,099

Design	REI 24-17 (wp01)			
Audit Notes:				
Version:	Phase:	PLAN	Tie On Depth:	0.0
Vertical Section:	Depth From (TVD) (ft)	+N/-S (ft)	+E/-W (ft)	Direction (°)
	0.0	0.0	0.0	166.82

Plan Sections										
Measured Depth (ft)	Inclination (°)	Azimuth (°)	Vertical Depth (ft)	+N/-S (ft)	+E/-W (ft)	Dogleg Rate (°/100ft)	Build Rate (°/100ft)	Turn Rate (°/100ft)	TFO (°)	Target
0.0	0.00	0.00	0.0	0.0	0.0	0.00	0.00	0.00	0.00	
900.0	0.00	0.00	900.0	0.0	0.0	0.00	0.00	0.00	0.00	
2,128.6	24.57	166.82	2,091.3	-252.6	59.2	2.00	2.00	0.00	166.82	
4,399.7	24.57	166.82	4,156.7	-1,172.1	274.5	0.00	0.00	0.00	0.00	
5,628.3	0.00	0.00	5,348.0	-1,424.7	333.7	2.00	-2.00	0.00	180.00	
8,128.3	0.00	0.00	7,848.0	-1,424.7	333.7	0.00	0.00	0.00	0.00	REI 24-17 BHL

Database:	EDM 2003.21 Single User Db	Local Co-ordinate Reference:	Well REI 24-17
Company:	ANADARKO PETROLEUM CORP.	TVD Reference:	WELL @ 4898.0ft (Original Well Elev)
Project:	ANADARKO COLORADO NORTHERN ZONE	MD Reference:	WELL @ 4898.0ft (Original Well Elev)
	NAD 83		
Site:	REI 17-17	North Reference:	True
Well:	REI 24-17	Survey Calculation Method:	Minimum Curvature
Wellbore:	24-17		
Design:	REI 24-17 (wp01)		

Planned Survey

Measured Depth (ft)	Inclination (°)	Azimuth (°)	Vertical Depth (ft)	+N/-S (ft)	+E/-W (ft)	Vertical Section (ft)	Dogleg Rate (°/100ft)	Build Rate (°/100ft)	Turn Rate (°/100ft)
0.0	0.00	0.00	0.0	0.0	0.0	0.0	0.00	0.00	0.00
100.0	0.00	0.00	100.0	0.0	0.0	0.0	0.00	0.00	0.00
200.0	0.00	0.00	200.0	0.0	0.0	0.0	0.00	0.00	0.00
300.0	0.00	0.00	300.0	0.0	0.0	0.0	0.00	0.00	0.00
400.0	0.00	0.00	400.0	0.0	0.0	0.0	0.00	0.00	0.00
500.0	0.00	0.00	500.0	0.0	0.0	0.0	0.00	0.00	0.00
600.0	0.00	0.00	600.0	0.0	0.0	0.0	0.00	0.00	0.00
700.0	0.00	0.00	700.0	0.0	0.0	0.0	0.00	0.00	0.00
750.0	0.00	0.00	750.0	0.0	0.0	0.0	0.00	0.00	0.00
9 5/8"									
800.0	0.00	0.00	800.0	0.0	0.0	0.0	0.00	0.00	0.00
900.0	0.00	0.00	900.0	0.0	0.0	0.0	0.00	0.00	0.00
Start Build 2.00									
1,000.0	2.00	166.82	1,000.0	-1.7	0.4	1.7	2.00	2.00	0.00
1,100.0	4.00	166.82	1,099.8	-6.8	1.6	7.0	2.00	2.00	0.00
1,200.0	6.00	166.82	1,199.5	-15.3	3.6	15.7	2.00	2.00	0.00
1,300.0	8.00	166.82	1,298.7	-27.1	6.4	27.9	2.00	2.00	0.00
1,400.0	10.00	166.82	1,397.5	-42.4	9.9	43.5	2.00	2.00	0.00
1,500.0	12.00	166.82	1,495.6	-61.0	14.3	62.6	2.00	2.00	0.00
1,600.0	14.00	166.82	1,593.1	-82.9	19.4	85.1	2.00	2.00	0.00
1,700.0	16.00	166.82	1,689.6	-108.1	25.3	111.0	2.00	2.00	0.00
1,800.0	18.00	166.82	1,785.3	-136.5	32.0	140.2	2.00	2.00	0.00
1,900.0	20.00	166.82	1,879.8	-168.2	39.4	172.8	2.00	2.00	0.00
2,000.0	22.00	166.82	1,973.2	-203.1	47.6	208.6	2.00	2.00	0.00
2,100.0	24.00	166.82	2,065.2	-241.1	56.5	247.7	2.00	2.00	0.00
2,128.6	24.57	166.82	2,091.3	-252.6	59.2	259.4	2.00	2.00	0.00
Start 2271.1 hold at 2128.6 MD									
2,200.0	24.57	166.82	2,156.2	-281.5	65.9	289.1	0.00	0.00	0.00
2,300.0	24.57	166.82	2,247.2	-322.0	75.4	330.7	0.00	0.00	0.00
2,400.0	24.57	166.82	2,338.1	-362.5	84.9	372.3	0.00	0.00	0.00
2,500.0	24.57	166.82	2,429.1	-403.0	94.4	413.9	0.00	0.00	0.00
2,600.0	24.57	166.82	2,520.0	-443.5	103.9	455.5	0.00	0.00	0.00
2,700.0	24.57	166.82	2,610.9	-483.9	113.3	497.0	0.00	0.00	0.00
2,800.0	24.57	166.82	2,701.9	-524.4	122.8	538.6	0.00	0.00	0.00
2,900.0	24.57	166.82	2,792.8	-564.9	132.3	580.2	0.00	0.00	0.00
3,000.0	24.57	166.82	2,883.8	-605.4	141.8	621.8	0.00	0.00	0.00
3,100.0	24.57	166.82	2,974.7	-645.9	151.3	663.4	0.00	0.00	0.00
3,200.0	24.57	166.82	3,065.7	-686.4	160.8	705.0	0.00	0.00	0.00
3,300.0	24.57	166.82	3,156.6	-726.9	170.2	746.5	0.00	0.00	0.00
3,400.0	24.57	166.82	3,247.5	-767.4	179.7	788.1	0.00	0.00	0.00
3,500.0	24.57	166.82	3,338.5	-807.8	189.2	829.7	0.00	0.00	0.00
3,600.0	24.57	166.82	3,429.4	-848.3	198.7	871.3	0.00	0.00	0.00
3,700.0	24.57	166.82	3,520.4	-888.8	208.2	912.9	0.00	0.00	0.00
3,800.0	24.57	166.82	3,611.3	-929.3	217.6	954.5	0.00	0.00	0.00
3,900.0	24.57	166.82	3,702.3	-969.8	227.1	996.0	0.00	0.00	0.00
4,000.0	24.57	166.82	3,793.2	-1,010.3	236.6	1,037.6	0.00	0.00	0.00
4,100.0	24.57	166.82	3,884.2	-1,050.8	246.1	1,079.2	0.00	0.00	0.00
4,200.0	24.57	166.82	3,975.1	-1,091.3	255.6	1,120.8	0.00	0.00	0.00
4,300.0	24.57	166.82	4,066.0	-1,131.7	265.1	1,162.4	0.00	0.00	0.00
4,390.1	24.57	166.82	4,148.0	-1,168.2	273.6	1,199.8	0.00	0.00	0.00
PK Depth									
4,399.7	24.57	166.82	4,156.7	-1,172.1	274.5	1,203.8	0.00	0.00	0.00
Start Drop -2.00									

Database:	EDM 2003.21 Single User Db	Local Co-ordinate Reference:	Well REI 24-17
Company:	ANADARKO PETROLEUM CORP.	TVD Reference:	WELL @ 4898.0ft (Original Well Elev)
Project:	ANADARKO COLORADO NORTHERN ZONE NAD 83	MD Reference:	WELL @ 4898.0ft (Original Well Elev)
Site:	REI 17-17	North Reference:	True
Well:	REI 24-17	Survey Calculation Method:	Minimum Curvature
Wellbore:	24-17		
Design:	REI 24-17 (wp01)		

Casing Points

Measured Depth (ft)	Vertical Depth (ft)	Name	Casing Diameter (")	Hole Diameter (")
750.0	750.0	9 5/8"	9-5/8	12-1/4

Formations

Measured Depth (ft)	Vertical Depth (ft)	Name	Lithology	Dip (°)	Dip Direction (°)
7,245.3	6,965.0	NIO Depth			
4,390.1	4,148.0	PK Depth			
7,524.3	7,244.0	CD Depth			
4,741.2	4,475.0	SX Depth			
7,602.3	7,322.0	GH Depth			
7,978.3	7,698.0	J Depth			

Plan Annotations

Measured Depth (ft)	Vertical Depth (ft)	Local Coordinates		Comment
		+N/-S (ft)	+E/-W (ft)	
900.0	900.0	0.0	0.0	Start Build 2.00
2,128.6	2,091.3	-252.6	59.2	Start 2271.1 hold at 2128.6 MD
4,399.7	4,156.7	-1,172.1	274.5	Start Drop -2.00
5,628.3	5,348.0	-1,424.7	333.7	Start 2500.0 hold at 5628.3 MD
8,128.3	7,848.0	-1,424.7	333.7	TD at 8128.3



ANADARKO PETROLEUM CORP.

ANADARKO COLORADO NORTHERN ZONE NAD 83

REI 17-17

REI 24-17

24-17

REI 24-17 (wp01)

Anticollision Summary Report

25 October, 2010

