

WILLIAMS PRODUCTION RMT COMPANY

Well location, BOSELY SG 413-35, located as shown in the NW 1/4 SW 1/4 of Section 35, T7S, R96W, 6th P.M., Garfield County, Colorado.

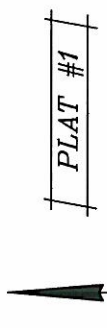
BASIS OF ELEVATION

SPOT ELEVATION AT THE NORTHWEST CORNER OF SECTION 30, T5S, R95W, 6th P.M. TAKEN FROM THE FORKED GULCH QUADRANGLE, COLORADO, GARFIELD COUNTY, 7.5 MINUTE SERIES (TOPOGRAPHICAL MAP) PUBLISHED BY THE UNITED STATES DEPARTMENT OF THE INTERIOR, GEOLOGICAL SURVEY. SAID ELEVATION IS MARKED AS BEING 5966 FEET.

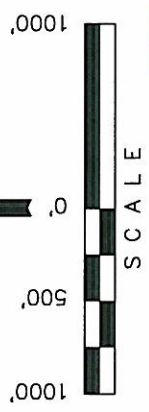
BASIS OF BEARINGS

BASIS OF BEARINGS IS A G.P.S. OBSERVATION.

NOTE:  
SEE CURRENT FOOTAGE PLAT #6 FOR  
EXISTING IMPROVEMENT WITHIN 400' OF  
THE PROPOSED WELL DISTURBANCE.



PLAT #1



CERTIFICATE

THIS IS TO CERTIFY THAT THE ABOVE PLAT WAS PREPARED FROM FIELD NOTES OF ACTUAL SURVEYS MADE BY ME OR UNDER MY SUPERVISION AND THAT THE SAME ARE TRUE AND CORRECT TO THE BEST OF MY KNOWLEDGE AND BELIEF.

REGISTERED LAND SURVEYOR  
REGISTRATION NO. 17492  
STATE OF COLORADO

UNTAH ENGINEERING & LAND SURVEYING

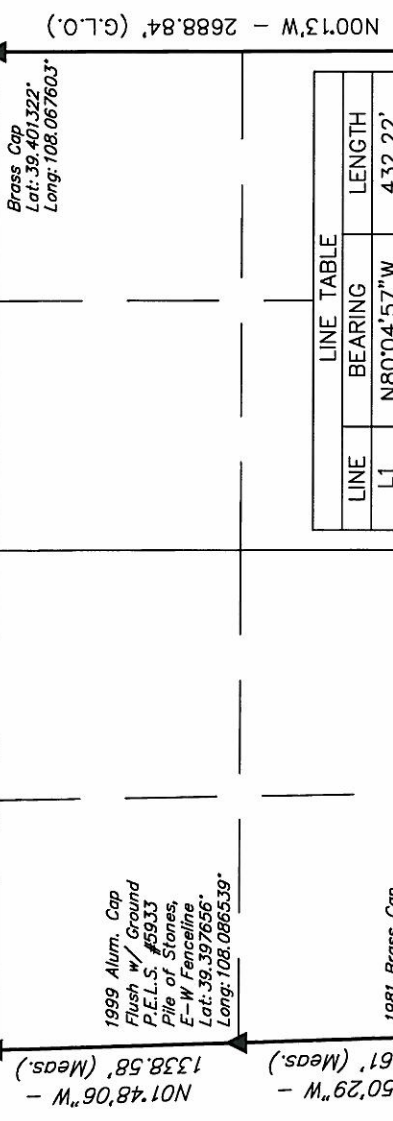
85 SOUTH 200 EAST - VERNAL, UTAH 84078

(435) 789-1017

SCALE 1" = 1000'	DATE SURVEYED: 03-10-10	DATE DRAWN: 07-18-10
PARTY B.H. C.K.	REFERENCES G.L.O. PLAT	
WEATHER WARM	FILE	
WILLIAMS PRODUCTION RMT COMPANY		

T7S, R96W, 6th P.M.

S89°59'43"E - 5394.65' (Meas.)



LINE TABLE		
LINE	BEARING	LENGTH
L1	N80°04'57"W	432.22'

35

BOSELY SG 413-35  
Elev. Ungraded Ground = 5377.8'

T7S

T8S

EAST - 2640.00' (G.L.O.)

S89°30'42"W - 1302.21' (Meas.)

S89°30'41"W - 1301.57' (Meas.)

2007 Alum. Cap (0.8' High, Pile of Stones, E-W) at Lat: 39.386383, Long: 108.086300

PDOP = 2.2

NAD 83 (TARGET BOTTOM HOLE)		NAD 83 (SURFACE LOCATION)	
LATITUDE = 39°23'27.89" (39.391081)	LATITUDE = 39°23'27.15" (39.390875)	LATITUDE = 39°23'27.15" (39.390875)	LATITUDE = 39°23'27.15" (39.390875)
LONGITUDE = 108°05'05.26" (108.084794)	LONGITUDE = 108°04'59.84" (108.083289)	LONGITUDE = 108°04'59.84" (108.083289)	LONGITUDE = 108°04'59.84" (108.083289)
STATE PLANE - COLO. CENTRAL - NAD 83	STATE PLANE - COLO. CENTRAL - NAD 83	STATE PLANE - COLO. CENTRAL - NAD 83	STATE PLANE - COLO. CENTRAL - NAD 83
N = 1577723.200	N = 1577636.592	N = 1577636.592	N = 1577636.592
E = 2269561.100	E = 2270004.412	E = 2270004.412	E = 2270004.412

- LEGEND:
- 90° SYMBOL
  - PROPOSED WELL HEAD.
  - SECTION CORNERS LOCATED.