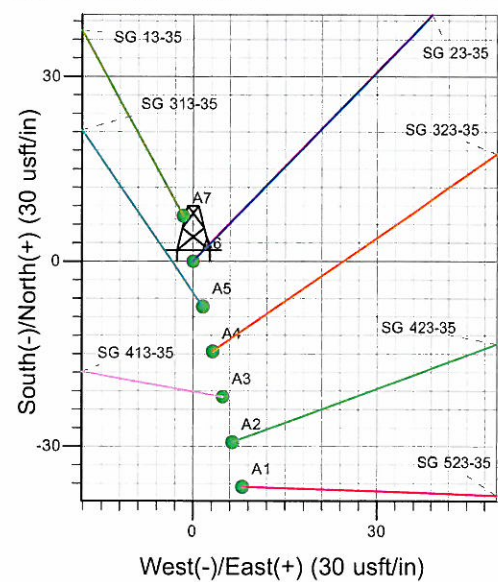
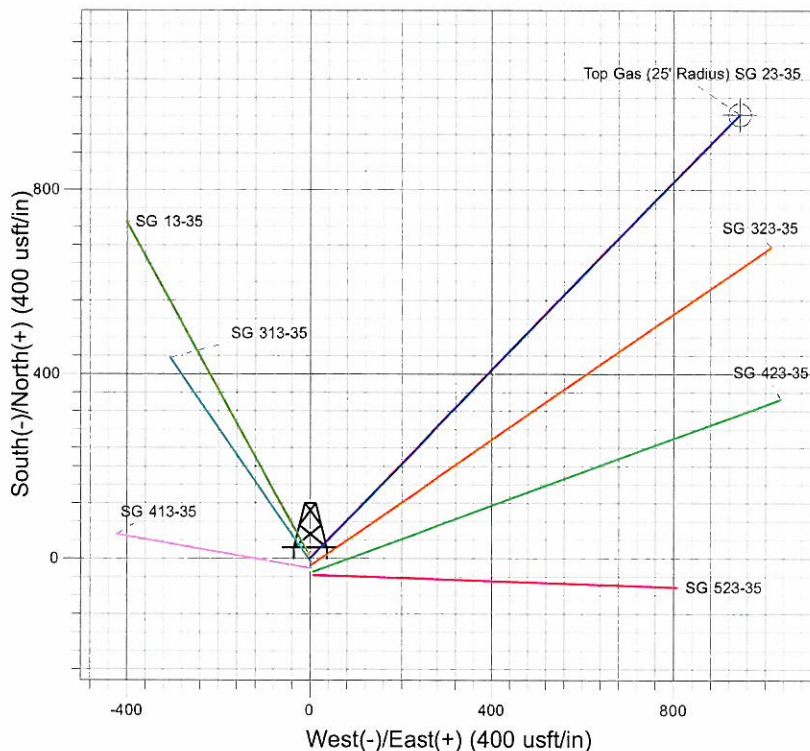
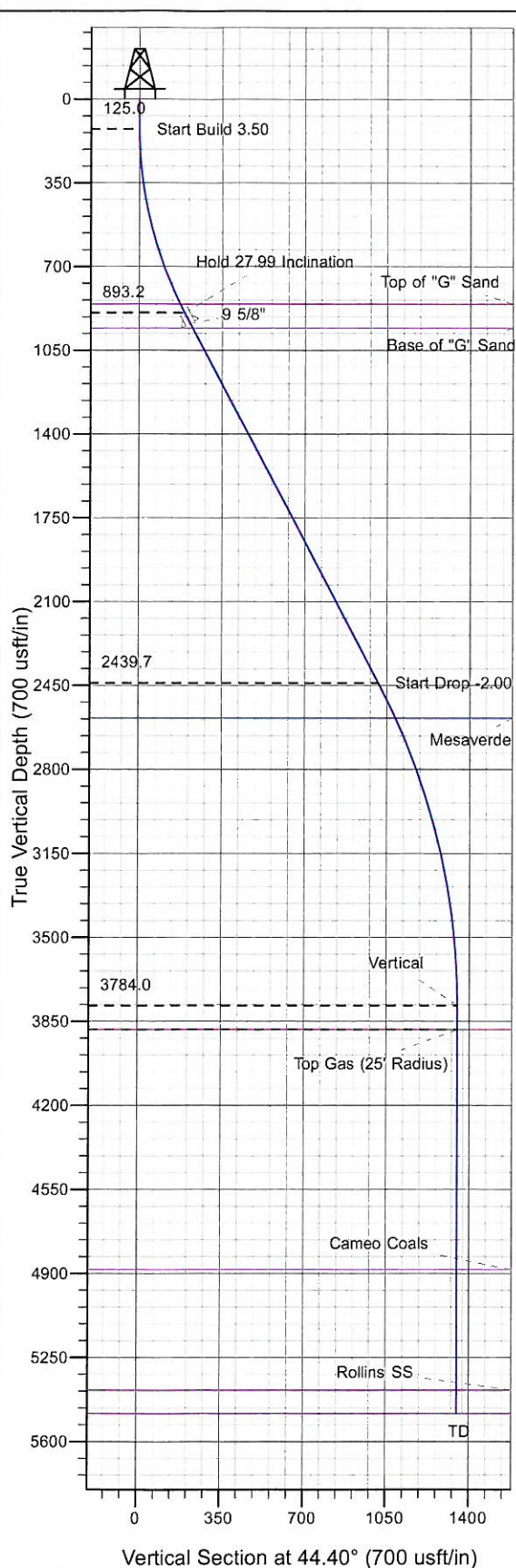
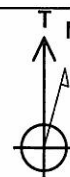




Well Name: SG 23-35
 Surface Location: SG 13-35 Pad
 North American Datum 1983 , US State Plane 1983 , Colorado Central Zone
 Ground Elevation: 5379.0
 +N/-S +E/-W Northing Easting Latitude Longitude Slot
 0.0 0.0 1577658.70 2270000.20 39° 23' 27.369 N 108° 4' 59.899 W A6
 KELLY BUSHING @ 5403.0usft (H&P (24' RKB) kjs)



Project: SG 35-07S-096W
 Site: SG 13-35 Pad
 Well: SG 23-35
 Design #1 16Jun10 kjs



Azimuths to True North
 Magnetic North: 10.51°
 Magnetic Field
 Strength: 52286.5snT
 Dip Angle: 65.66°
 Date: 6/16/2010
 Model: IGRF2010

ANNOTATIONS

TVD	MD	Inc	Azi	+N/-S	+E/-W	VSec	Departure	Annotation
125.0	125.0	0.00	0.00	0.0	0.0	0.0	0.0	Start Build 3.50
893.2	924.6	27.99	44.40	136.8	133.9	191.4	191.4	Hold 27.99 Inclination
2439.7	2675.9	27.99	44.40	724.0	708.9	1013.2	1013.2	Start Drop -2.00
3784.0	4075.2	0.00	0.00	963.4	943.2	1348.2	1348.2	Vertical
3884.0	4175.2	0.00	0.00	963.4	943.2	1348.2	1348.2	Top Gas
5484.0	5775.2	0.00	0.00	963.4	943.2	1348.2	1348.2	TD at 5775.2

PICEANCE VLY NAD 83

SG 35-07S-096W

SG 13-35 Pad

SG 23-35 - Slot A6

Wellbore #1

Plan: Design #1 16Jun10 kjs

Standard Planning Report - Geographic

05 August, 2010

Williams
Planning Report - Geographic

Database:	Compass R5000 WIN AUTH	Local Co-ordinate Reference:	Well SG 23-35 - Slot A6
Company:	PICEANCE VLY NAD 83	TVD Reference:	KELLY BUSHING @ 5403.0usft (H&P (24' RKB) kjs)
Project:	SG 35-07S-096W	MD Reference:	KELLY BUSHING @ 5403.0usft (H&P (24' RKB) kjs)
Site:	SG 13-35 Pad	North Reference:	True
Well:	SG 23-35	Survey Calculation Method:	Minimum Curvature
Wellbore:	Wellbore #1		
Design:	Design #1 16Jun10 kjs		

Project	SG 35-07S-096W, Garfield County, CO, 35-07S-096W		
Map System:	US State Plane 1983	System Datum:	Mean Sea Level
Geo Datum:	North American Datum 1983		
Map Zone:	Colorado Central Zone		Using geodetic scale factor

Site	SG 13-35 Pad			
Site Position:		Northing:	1,577,604.70 usft	Latitude: 39° 23' 26.838 N
From: Map		Easting:	2,270,010.50 usft	Longitude: 108° 4' 59.749 W
Position Uncertainty:	0.0 usft	Slot Radius:	13.200 in	Grid Convergence: -1.629 °

Well	SG 23-35 - Slot A6			
Well Position	+N/-S	0.0 usft	Northing:	1,577,658.70 usft
	+E/-W	0.0 usft	Easting:	2,270,000.20 usft
Position Uncertainty	0.0 usft		Wellhead Elevation:	Ground Level: 5,379.0 usft

Wellbore	Wellbore #1				
Magnetics	Model Name	Sample Date	Declination (°)	Dip Angle (°)	Field Strength (nT)
	IGRF2010	6/16/2010	10.506	65.663	52,287

Design	Design #1 16Jun10 kjs			
Audit Notes:				
Version:	Phase:	PLAN	Tie On Depth:	0.0
Vertical Section:	Depth From (TVD) (usft)	+N/-S (usft)	+E/-W (usft)	Direction (°)
	0.0	0.0	0.0	44.40

Plan Sections										
Measured Depth (usft)	Inclination (°)	Azimuth (°)	Vertical Depth (usft)	+N/-S (usft)	+E/-W (usft)	Dogleg Rate (°/100usft)	Build Rate (°/100usft)	Turn Rate (°/100usft)	TFO (°)	Target
0.0	0.00	0.00	0.0	0.0	0.0	0.00	0.00	0.00	0.000	
125.0	0.00	0.00	125.0	0.0	0.0	0.00	0.00	0.00	0.000	
924.6	27.99	44.40	893.2	136.8	133.9	3.50	3.50	0.00	44.396	
2,675.9	27.99	44.40	2,439.7	724.0	708.9	0.00	0.00	0.00	0.000	
4,075.2	0.00	0.00	3,784.0	963.4	943.2	2.00	-2.00	0.00	180.000	
4,175.2	0.00	0.00	3,884.0	963.4	943.2	0.00	0.00	0.00	0.000	Top Gas (25' Radius)
5,775.2	0.00	0.00	5,484.0	963.4	943.2	0.00	0.00	0.00	0.000	

Williams
Planning Report - Geographic

Database:	Compass R5000 WIN AUTH	Local Co-ordinate Reference:	Well SG 23-35 - Slot A6
Company:	PICEANCE VLY NAD 83	TVD Reference:	KELLY BUSHING @ 5403.0usft (H&P (24' RKB) kjs)
Project:	SG 35-07S-096W	MD Reference:	KELLY BUSHING @ 5403.0usft (H&P (24' RKB) kjs)
Site:	SG 13-35 Pad	North Reference:	True
Well:	SG 23-35	Survey Calculation Method:	Minimum Curvature
Wellbore:	Wellbore #1		
Design:	Design #1 16Jun10 kjs		

Planned Survey									
Measured Depth (usft)	Inclination (°)	Azimuth (°)	Vertical Depth (usft)	+N/-S (usft)	+E/-W (usft)	Map Northing (usft)	Map Easting (usft)	Latitude	Longitude
0.0	0.00	0.00	0.0	0.0	0.0	1,577,658.70	2,270,000.20	39° 23' 27.369 N	108° 4' 59.899 W
125.0	0.00	0.00	125.0	0.0	0.0	1,577,658.70	2,270,000.20	39° 23' 27.369 N	108° 4' 59.899 W
Start Build 3.50									
883.9	26.56	44.40	857.0	123.5	120.9	1,577,778.66	2,270,124.53	39° 23' 28.589 N	108° 4' 58.360 W
Top of "G" Sand									
924.6	27.99	44.40	893.2	136.8	133.9	1,577,791.61	2,270,137.96	39° 23' 28.721 N	108° 4' 58.194 W
Hold 27.99 Inclination									
975.0	27.99	44.40	937.7	153.7	150.5	1,577,808.03	2,270,154.97	39° 23' 28.888 N	108° 4' 57.983 W
9 5/8"									
996.9	27.99	44.40	957.0	161.0	157.7	1,577,815.15	2,270,162.36	39° 23' 28.960 N	108° 4' 57.891 W
Base of "G" Sand									
2,675.9	27.99	44.40	2,439.7	724.0	708.9	1,578,362.20	2,270,729.33	39° 23' 34.524 N	108° 4' 50.870 W
Start Drop -2.00									
2,837.0	24.76	44.40	2,584.0	775.1	758.9	1,578,411.89	2,270,780.83	39° 23' 35.030 N	108° 4' 50.232 W
Mesaverde									
4,075.2	0.00	0.00	3,784.0	963.4	943.2	1,578,594.80	2,270,970.40	39° 23' 36.890 N	108° 4' 47.885 W
Vertical									
4,175.2	0.00	0.00	3,884.0	963.4	943.2	1,578,594.80	2,270,970.40	39° 23' 36.890 N	108° 4' 47.885 W
Top Gas - Approx. Top Gas									
5,175.2	0.00	0.00	4,884.0	963.4	943.2	1,578,594.80	2,270,970.40	39° 23' 36.890 N	108° 4' 47.885 W
Cameo Coals									
5,675.2	0.00	0.00	5,384.0	963.4	943.2	1,578,594.80	2,270,970.40	39° 23' 36.890 N	108° 4' 47.885 W
Rollins SS									
5,775.2	0.00	0.00	5,484.0	963.4	943.2	1,578,594.80	2,270,970.40	39° 23' 36.890 N	108° 4' 47.885 W
TD at 5775.2 - TD									

Design Targets									
Target Name	Dip Angle (°)	Dip Dir. (°)	TVD (usft)	+N/-S (usft)	+E/-W (usft)	Northing (usft)	Easting (usft)	Latitude	Longitude
- hit/miss target									
- Shape									
Top Gas (25' Radius) SC	0.00	0.00	3,884.0	963.4	943.2	1,578,594.80	2,270,970.40	39° 23' 36.890 N	108° 4' 47.885 W
- plan hits target center									
- Circle (radius 25.0)									

Casing Points					
Measured Depth (usft)	Vertical Depth (usft)	Name	Casing Diameter (in)	Hole Diameter (in)	
975.0	937.7	9 5/8"	9.625	12.250	

Williams
Planning Report - Geographic

Database:	Compass R5000 WIN AUTH	Local Co-ordinate Reference:	Well SG 23-35 - Slot A6
Company:	PICEANCE VLY NAD 83	TVD Reference:	KELLY BUSHING @ 5403.0usft (H&P (24' RKB) kjs)
Project:	SG 35-07S-096W	MD Reference:	KELLY BUSHING @ 5403.0usft (H&P (24' RKB) kjs)
Site:	SG 13-35 Pad	North Reference:	True
Well:	SG 23-35	Survey Calculation Method:	Minimum Curvature
Wellbore:	Wellbore #1		
Design:	Design #1 16Jun10 kjs		

Formations						
Measured Depth (usft)	Vertical Depth (usft)	Name	Lithology	Dip (°)	Dip Direction (°)	
883.9	857.0	Top of "G" Sand				
996.9	957.0	Base of "G" Sand				
2,837.0	2,584.0	Mesaverde				
4,175.2	3,884.0	Approx. Top Gas				
5,175.2	4,884.0	Cameo Coals				
5,675.2	5,384.0	Rollins SS				
5,775.2	5,484.0	TD				

Plan Annotations					
Measured Depth (usft)	Vertical Depth (usft)	Local Coordinates			
		+N/-S (usft)	+E/-W (usft)	Comment	
125.0	125.0	0.0	0.0	Start Build 3.50	
924.6	893.2	136.8	133.9	Hold 27.99 Inclination	
2,675.9	2,439.7	724.0	708.9	Start Drop -2.00	
4,075.2	3,784.0	963.4	943.2	Vertical	
4,175.2	3,884.0	963.4	943.2	Top Gas	
5,775.2	5,484.0	963.4	943.2	TD at 5775.2	