

# **US ROCKIES REGION PLANNING**

**COLORADO NORTHERN ZONE - 83**

**SEKICH 23-17**

**SEKICH 36-17**

**SEKICH 36-17**

**Plan: SEKICH 36-17 (wp01)**

## **Standard Planning Report**

**19 November, 2010**





# Weatherford®

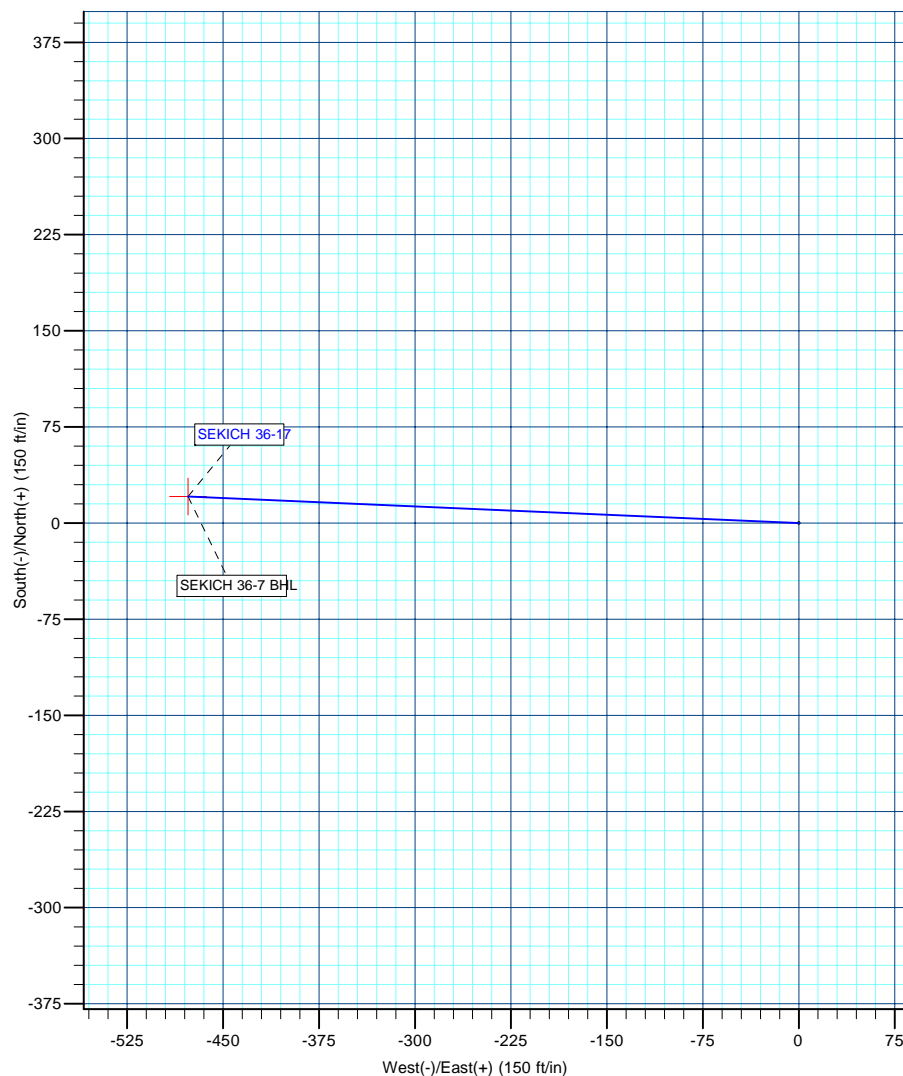
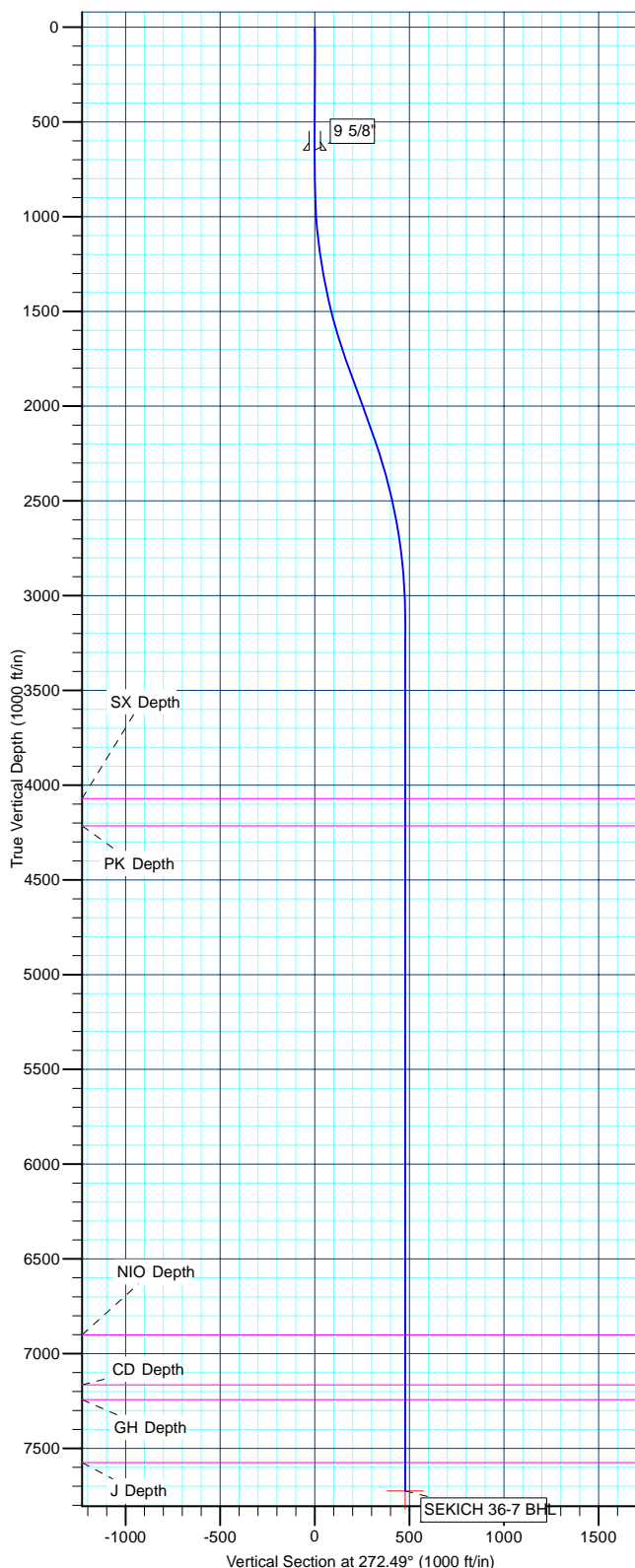
FORMATION TOP DETAILS		
TVDPath	MDPath	Formation
4071.00	4134.63	SX Depth
4215.00	4278.63	PK Depth
6901.00	6964.63	NIO Depth
7165.00	7228.63	CD Depth
7243.00	7306.63	GH Depth
7575.00	7638.63	J Depth

WELL DETAILS: SEKICH 36-17						
+N/-S	+E/-W	Northing	Easting	Ground Level: 4865.00 Latitude	Longitude	Slot
0.00	0.00	1323273.87	3163976.84	40.219294	-104.912797	

WELLBORE TARGET DETAILS (MAP CO-ORDINATES AND LAT/LONG)						
Name	TVD	+N/-S	+E/-W	Latitude	Longitude	Shape Point
SEKICH 36-7 BHL	7725.00	20.78	-477.52	40.219351	-104.914507	

SECTION DETAILS										
Sec	MD	Inc	Azi	TVD	+N/-S	+E/-W	Dleg	TFace	VSect	Target
1	0.00	0.00	0.00	0.00	0.00	0.00	0.00	0.00	0.00	
2	800.00	0.00	0.00	800.00	0.00	0.00	0.00	0.00	0.00	
3	1796.26	19.93	272.49	1776.30	7.45	-171.33	2.00	272.49	171.49	
4	2192.38	19.93	272.49	2148.70	13.32	-306.19	0.00	0.00	306.48	
5	3188.63	0.00	0.00	3125.00	20.78	-477.52	2.00	180.00	477.97	
6	7788.63	0.00	0.00	7725.00	20.78	-477.52	0.00	0.00	477.97	SEKICH 36-7 BHL

CASING DETAILS			
TVD	MD	Name	Size
650.00	650.00	9 5/8"	9-5/8



<b>Database:</b>	edm5000p	<b>Local Co-ordinate Reference:</b>	Well SEKICH 36-17
<b>Company:</b>	US ROCKIES REGION PLANNING	<b>TVD Reference:</b>	WELL @ 4865.00ft (Original Well Elev)
<b>Project:</b>	COLORADO NORTHERN ZONE - 83	<b>MD Reference:</b>	WELL @ 4865.00ft (Original Well Elev)
<b>Site:</b>	SEKICH 23-17	<b>North Reference:</b>	True
<b>Well:</b>	SEKICH 36-17	<b>Survey Calculation Method:</b>	Minimum Curvature
<b>Wellbore:</b>	SEKICH 36-17		
<b>Design:</b>	SEKICH 36-17 (wp01)		

<b>Project</b>	COLORADO NORTHERN ZONE - 83		
<b>Map System:</b>	US State Plane 1983	<b>System Datum:</b>	Mean Sea Level
<b>Geo Datum:</b>	North American Datum 1983		
<b>Map Zone:</b>	Colorado Northern Zone		

Site		SEKICH 23-17				
Site Position:		Northing:	1,323,280.39 ft	Latitude:	40.219312	
From:	Lat/Long	Easting:	3,163,969.26 ft	Longitude:	-104.912824	
Position Uncertainty:		0.00 ft	Slot Radius:	0 "	Grid Convergence:	0.38 °

Well	SEKICH 36-17					
Well Position	+N/-S	-6.57 ft	Northing:	1,323,273.87 ft	Latitude:	40.219294
	+E/-W	7.54 ft	Easting:	3,163,976.84 ft	Longitude:	-104.912797
Position Uncertainty		0.00 ft	Wellhead Elevation:		Ground Level:	4,865.00 ft

<b>Wellbore</b>	SEKICH 36-17				
<b>Magnetics</b>	<b>Model Name</b>	<b>Sample Date</b>	<b>Declination (°)</b>	<b>Dip Angle (°)</b>	<b>Field Strength (nT)</b>
	IGRF2010	11/18/2010	9.00	66.90	53,080

<b>Design</b>	SEKICH 36-17 (wp01)			
<b>Audit Notes:</b>				
<b>Version:</b>	<b>Phase:</b>	PLAN	<b>Tie On Depth:</b>	0.00
<b>Vertical Section:</b>	<b>Depth From (TVD) (ft)</b>	<b>+N/-S (ft)</b>	<b>+E/-W (ft)</b>	<b>Direction (°)</b>
	0.00	0.00	0.00	272.49

<b>Plan Sections</b>										
Measured Depth (ft)	Inclination (°)	Azimuth (°)	Vertical Depth (ft)	+N/-S (ft)	+E/-W (ft)	Dogleg Rate (°/100ft)	Build Rate (°/100ft)	Turn Rate (°/100ft)	TFO (°)	Target
0.00	0.00	0.00	0.00	0.00	0.00	0.00	0.00	0.00	0.00	
800.00	0.00	0.00	800.00	0.00	0.00	0.00	0.00	0.00	0.00	
1,796.26	19.93	272.49	1,776.30	7.45	-171.33	2.00	2.00	0.00	272.49	
2,192.38	19.93	272.49	2,148.70	13.32	-306.19	0.00	0.00	0.00	0.00	
3,188.63	0.00	0.00	3,125.00	20.78	-477.52	2.00	-2.00	0.00	180.00	
7,788.63	0.00	0.00	7,725.00	20.78	-477.52	0.00	0.00	0.00	0.00	SEKICH 36-7 BHL

<b>Database:</b>	edm5000p	<b>Local Co-ordinate Reference:</b>	Well SEKICH 36-17
<b>Company:</b>	US ROCKIES REGION PLANNING	<b>TVD Reference:</b>	WELL @ 4865.00ft (Original Well Elev)
<b>Project:</b>	COLORADO NORTHERN ZONE - 83	<b>MD Reference:</b>	WELL @ 4865.00ft (Original Well Elev)
<b>Site:</b>	SEKICH 23-17	<b>North Reference:</b>	True
<b>Well:</b>	SEKICH 36-17	<b>Survey Calculation Method:</b>	Minimum Curvature
<b>Wellbore:</b>	SEKICH 36-17		
<b>Design:</b>	SEKICH 36-17 (wp01)		

Planned Survey									
Measured Depth (ft)	Inclination (°)	Azimuth (°)	Vertical Depth (ft)	+N/-S (ft)	+E/-W (ft)	Vertical Section (ft)	Dogleg Rate (°/100ft)	Build Rate (°/100ft)	Turn Rate (°/100ft)
0.00	0.00	0.00	0.00	0.00	0.00	0.00	0.00	0.00	0.00
100.00	0.00	0.00	100.00	0.00	0.00	0.00	0.00	0.00	0.00
200.00	0.00	0.00	200.00	0.00	0.00	0.00	0.00	0.00	0.00
300.00	0.00	0.00	300.00	0.00	0.00	0.00	0.00	0.00	0.00
400.00	0.00	0.00	400.00	0.00	0.00	0.00	0.00	0.00	0.00
500.00	0.00	0.00	500.00	0.00	0.00	0.00	0.00	0.00	0.00
600.00	0.00	0.00	600.00	0.00	0.00	0.00	0.00	0.00	0.00
650.00	0.00	0.00	650.00	0.00	0.00	0.00	0.00	0.00	0.00
9 5/8"									
700.00	0.00	0.00	700.00	0.00	0.00	0.00	0.00	0.00	0.00
800.00	0.00	0.00	800.00	0.00	0.00	0.00	0.00	0.00	0.00
900.00	2.00	272.49	899.98	0.08	-1.74	1.75	2.00	2.00	0.00
1,000.00	4.00	272.49	999.84	0.30	-6.97	6.98	2.00	2.00	0.00
1,100.00	6.00	272.49	1,099.45	0.68	-15.68	15.69	2.00	2.00	0.00
1,200.00	8.00	272.49	1,198.70	1.21	-27.85	27.88	2.00	2.00	0.00
1,300.00	10.00	272.49	1,297.47	1.89	-43.48	43.52	2.00	2.00	0.00
1,400.00	12.00	272.49	1,395.62	2.72	-62.54	62.60	2.00	2.00	0.00
1,500.00	14.00	272.49	1,493.06	3.70	-85.02	85.10	2.00	2.00	0.00
1,600.00	16.00	272.49	1,589.64	4.82	-110.87	110.98	2.00	2.00	0.00
1,700.00	18.00	272.49	1,685.27	6.09	-140.08	140.21	2.00	2.00	0.00
1,796.26	19.93	272.49	1,776.30	7.45	-171.33	171.49	2.00	2.00	0.00
1,800.00	19.93	272.49	1,779.82	7.51	-172.60	172.77	0.00	0.00	0.00
1,900.00	19.93	272.49	1,873.83	8.99	-206.65	206.84	0.00	0.00	0.00
2,000.00	19.93	272.49	1,967.84	10.47	-240.70	240.92	0.00	0.00	0.00
2,100.00	19.93	272.49	2,061.86	11.95	-274.74	275.00	0.00	0.00	0.00
2,192.38	19.93	272.49	2,148.70	13.32	-306.19	306.48	0.00	0.00	0.00
2,200.00	19.77	272.49	2,155.88	13.44	-308.78	309.07	2.00	-2.00	0.00
2,300.00	17.77	272.49	2,250.55	14.83	-340.93	341.25	2.00	-2.00	0.00
2,400.00	15.77	272.49	2,346.29	16.09	-369.76	370.11	2.00	-2.00	0.00
2,500.00	13.77	272.49	2,442.98	17.20	-395.23	395.61	2.00	-2.00	0.00
2,600.00	11.77	272.49	2,540.50	18.16	-417.32	417.71	2.00	-2.00	0.00
2,700.00	9.77	272.49	2,638.73	18.97	-435.99	436.40	2.00	-2.00	0.00
2,800.00	7.77	272.49	2,737.56	19.63	-451.23	451.65	2.00	-2.00	0.00
2,900.00	5.77	272.49	2,836.86	20.15	-463.01	463.45	2.00	-2.00	0.00
3,000.00	3.77	272.49	2,936.51	20.51	-471.32	471.77	2.00	-2.00	0.00
3,100.00	1.77	272.49	3,036.38	20.72	-476.15	476.60	2.00	-2.00	0.00
3,188.63	0.00	0.00	3,125.00	20.78	-477.52	477.97	2.00	-2.00	0.00
3,200.00	0.00	0.00	3,136.37	20.78	-477.52	477.97	0.00	0.00	0.00
3,300.00	0.00	0.00	3,236.37	20.78	-477.52	477.97	0.00	0.00	0.00
3,400.00	0.00	0.00	3,336.37	20.78	-477.52	477.97	0.00	0.00	0.00
3,500.00	0.00	0.00	3,436.37	20.78	-477.52	477.97	0.00	0.00	0.00
3,600.00	0.00	0.00	3,536.37	20.78	-477.52	477.97	0.00	0.00	0.00
3,700.00	0.00	0.00	3,636.37	20.78	-477.52	477.97	0.00	0.00	0.00
3,800.00	0.00	0.00	3,736.37	20.78	-477.52	477.97	0.00	0.00	0.00
3,900.00	0.00	0.00	3,836.37	20.78	-477.52	477.97	0.00	0.00	0.00
4,000.00	0.00	0.00	3,936.37	20.78	-477.52	477.97	0.00	0.00	0.00
4,100.00	0.00	0.00	4,036.37	20.78	-477.52	477.97	0.00	0.00	0.00
4,134.63	0.00	0.00	4,071.00	20.78	-477.52	477.97	0.00	0.00	0.00
SX Depth									
4,200.00	0.00	0.00	4,136.37	20.78	-477.52	477.97	0.00	0.00	0.00
4,278.63	0.00	0.00	4,215.00	20.78	-477.52	477.97	0.00	0.00	0.00
PK Depth									
4,300.00	0.00	0.00	4,236.37	20.78	-477.52	477.97	0.00	0.00	0.00

<b>Database:</b>	edm5000p	<b>Local Co-ordinate Reference:</b>	Well SEKICH 36-17
<b>Company:</b>	US ROCKIES REGION PLANNING	<b>TVD Reference:</b>	WELL @ 4865.00ft (Original Well Elev)
<b>Project:</b>	COLORADO NORTHERN ZONE - 83	<b>MD Reference:</b>	WELL @ 4865.00ft (Original Well Elev)
<b>Site:</b>	SEKICH 23-17	<b>North Reference:</b>	True
<b>Well:</b>	SEKICH 36-17	<b>Survey Calculation Method:</b>	Minimum Curvature
<b>Wellbore:</b>	SEKICH 36-17		
<b>Design:</b>	SEKICH 36-17 (wp01)		

Planned Survey									
Measured Depth (ft)	Inclination (°)	Azimuth (°)	Vertical Depth (ft)	+N/-S (ft)	+E/-W (ft)	Vertical Section (ft)	Dogleg Rate (°/100ft)	Build Rate (°/100ft)	Turn Rate (°/100ft)
4,400.00	0.00	0.00	4,336.37	20.78	-477.52	477.97	0.00	0.00	0.00
4,500.00	0.00	0.00	4,436.37	20.78	-477.52	477.97	0.00	0.00	0.00
4,600.00	0.00	0.00	4,536.37	20.78	-477.52	477.97	0.00	0.00	0.00
4,700.00	0.00	0.00	4,636.37	20.78	-477.52	477.97	0.00	0.00	0.00
4,800.00	0.00	0.00	4,736.37	20.78	-477.52	477.97	0.00	0.00	0.00
4,900.00	0.00	0.00	4,836.37	20.78	-477.52	477.97	0.00	0.00	0.00
5,000.00	0.00	0.00	4,936.37	20.78	-477.52	477.97	0.00	0.00	0.00
5,100.00	0.00	0.00	5,036.37	20.78	-477.52	477.97	0.00	0.00	0.00
5,200.00	0.00	0.00	5,136.37	20.78	-477.52	477.97	0.00	0.00	0.00
5,300.00	0.00	0.00	5,236.37	20.78	-477.52	477.97	0.00	0.00	0.00
5,400.00	0.00	0.00	5,336.37	20.78	-477.52	477.97	0.00	0.00	0.00
5,500.00	0.00	0.00	5,436.37	20.78	-477.52	477.97	0.00	0.00	0.00
5,600.00	0.00	0.00	5,536.37	20.78	-477.52	477.97	0.00	0.00	0.00
5,700.00	0.00	0.00	5,636.37	20.78	-477.52	477.97	0.00	0.00	0.00
5,800.00	0.00	0.00	5,736.37	20.78	-477.52	477.97	0.00	0.00	0.00
5,900.00	0.00	0.00	5,836.37	20.78	-477.52	477.97	0.00	0.00	0.00
6,000.00	0.00	0.00	5,936.37	20.78	-477.52	477.97	0.00	0.00	0.00
6,100.00	0.00	0.00	6,036.37	20.78	-477.52	477.97	0.00	0.00	0.00
6,200.00	0.00	0.00	6,136.37	20.78	-477.52	477.97	0.00	0.00	0.00
6,300.00	0.00	0.00	6,236.37	20.78	-477.52	477.97	0.00	0.00	0.00
6,400.00	0.00	0.00	6,336.37	20.78	-477.52	477.97	0.00	0.00	0.00
6,500.00	0.00	0.00	6,436.37	20.78	-477.52	477.97	0.00	0.00	0.00
6,600.00	0.00	0.00	6,536.37	20.78	-477.52	477.97	0.00	0.00	0.00
6,700.00	0.00	0.00	6,636.37	20.78	-477.52	477.97	0.00	0.00	0.00
6,800.00	0.00	0.00	6,736.37	20.78	-477.52	477.97	0.00	0.00	0.00
6,900.00	0.00	0.00	6,836.37	20.78	-477.52	477.97	0.00	0.00	0.00
6,964.63	0.00	0.00	6,901.00	20.78	-477.52	477.97	0.00	0.00	0.00
<b>NIO Depth</b>									
7,000.00	0.00	0.00	6,936.37	20.78	-477.52	477.97	0.00	0.00	0.00
7,100.00	0.00	0.00	7,036.37	20.78	-477.52	477.97	0.00	0.00	0.00
7,200.00	0.00	0.00	7,136.37	20.78	-477.52	477.97	0.00	0.00	0.00
7,228.63	0.00	0.00	7,165.00	20.78	-477.52	477.97	0.00	0.00	0.00
<b>CD Depth</b>									
7,300.00	0.00	0.00	7,236.37	20.78	-477.52	477.97	0.00	0.00	0.00
7,306.63	0.00	0.00	7,243.00	20.78	-477.52	477.97	0.00	0.00	0.00
<b>GH Depth</b>									
7,400.00	0.00	0.00	7,336.37	20.78	-477.52	477.97	0.00	0.00	0.00
7,500.00	0.00	0.00	7,436.37	20.78	-477.52	477.97	0.00	0.00	0.00
7,600.00	0.00	0.00	7,536.37	20.78	-477.52	477.97	0.00	0.00	0.00
7,638.63	0.00	0.00	7,575.00	20.78	-477.52	477.97	0.00	0.00	0.00
<b>J Depth</b>									
7,700.00	0.00	0.00	7,636.37	20.78	-477.52	477.97	0.00	0.00	0.00
7,788.63	0.00	0.00	7,725.00	20.78	-477.52	477.97	0.00	0.00	0.00
<b>SEKICH 36-7 BHL</b>									

<b>Database:</b>	edm5000p	<b>Local Co-ordinate Reference:</b>	Well SEKICH 36-17
<b>Company:</b>	US ROCKIES REGION PLANNING	<b>TVD Reference:</b>	WELL @ 4865.00ft (Original Well Elev)
<b>Project:</b>	COLORADO NORTHERN ZONE - 83	<b>MD Reference:</b>	WELL @ 4865.00ft (Original Well Elev)
<b>Site:</b>	SEKICH 23-17	<b>North Reference:</b>	True
<b>Well:</b>	SEKICH 36-17	<b>Survey Calculation Method:</b>	Minimum Curvature
<b>Wellbore:</b>	SEKICH 36-17		
<b>Design:</b>	SEKICH 36-17 (wp01)		

#### Design Targets

##### Target Name

- hit/miss target	Dip Angle (°)	Dip Dir. (°)	TVD (ft)	+N/-S (ft)	+E/-W (ft)	Northing (ft)	Easting (ft)	Latitude	Longitude
- Shape									
SEKICH 36-7 BHL	0.00	0.00	7,725.00	20.78	-477.52	1,323,291.48	3,163,499.19	40.219351	-104.914507
- plan hits target center									
- Point									

#### Casing Points

Measured Depth (ft)	Vertical Depth (ft)	Name	Casing Diameter (")	Hole Diameter (")
650.00	650.00	9 5/8"	9-5/8	12-1/4

#### Formations

Measured Depth (ft)	Vertical Depth (ft)	Name	Lithology	Dip (°)	Dip Direction (°)
4,134.63	4,071.00	SX Depth			
4,278.63	4,215.00	PK Depth			
6,964.63	6,901.00	NIO Depth			
7,228.63	7,165.00	CD Depth			
7,306.63	7,243.00	GH Depth			
7,638.63	7,575.00	J Depth			

# **US ROCKIES REGION PLANNING**

**COLORADO NORTHERN ZONE - 83**

**SEKICH 23-17**

**SEKICH 36-17**

**SEKICH 36-17**

**SEKICH 36-17 (wp01)**

## **Anticollision Summary Report**

**22 November, 2010**



**Weatherford®**

# APC

## Anticollision Summary Report



<b>Company:</b>	US ROCKIES REGION PLANNING	<b>Local Co-ordinate Reference:</b>	Well SEKICH 36-17
<b>Project:</b>	COLORADO NORTHERN ZONE - 83	<b>TVD Reference:</b>	WELL @ 4865.00ft (Original Well Elev)
<b>Reference Site:</b>	SEKICH 23-17	<b>MD Reference:</b>	WELL @ 4865.00ft (Original Well Elev)
<b>Site Error:</b>	0.00 ft	<b>North Reference:</b>	True
<b>Reference Well:</b>	SEKICH 36-17	<b>Survey Calculation Method:</b>	Minimum Curvature
<b>Well Error:</b>	0.00 ft	<b>Output errors are at</b>	2.00 sigma
<b>Reference Wellbore</b>	SEKICH 36-17	<b>Database:</b>	edm5000p
<b>Reference Design:</b>	SEKICH 36-17 (wp01)	<b>Offset TVD Reference:</b>	Offset Datum

<b>Reference</b>	SEKICH 36-17 (wp01)		
<b>Filter type:</b>	NO GLOBAL FILTER: Using user defined selection & filtering criteria		
<b>Interpolation Method:</b>	MD + Stations Interval 100.00ft	<b>Error Model:</b>	ISCWSA
<b>Depth Range:</b>	Unlimited	<b>Scan Method:</b>	Closest Approach 3D
<b>Results Limited by:</b>	Maximum center-center distance of 1,000.00 ft	<b>Error Surface:</b>	Elliptical Conic
<b>Warning Levels Evaluated at:</b>	2.00 Sigma		

<b>Survey Tool Program</b>	<b>Date</b> 11/19/2010				
<b>From (ft)</b>	<b>To (ft)</b>	<b>Survey (Wellbore)</b>	<b>Tool Name</b>	<b>Description</b>	
0.00	7,788.63	SEKICH 36-17 (wp01) (SEKICH 36-17)	MWD	MWD - Standard	

<b>Summary</b>						
Site Name	Reference Measured Depth (ft)	Offset Measured Depth (ft)	Distance Between Centres (ft)	Distance Between Ellipses (ft)	Separation Factor	Warning
Offset Well - Wellbore - Design						
SEKICH 23-17						
HSR SEKICH #15-17 - HSR SEKICH #15-17 - HSR SEK	0.00	0.00	539.02			
HSR SEKICH #15-17 - HSR SEKICH #15-17 - HSR SEK	2,900.00	2,829.28	995.83	981.11	67.668	SF
HSR-SEKICH #14-17 - HSR-SEKICH #14-17 - HSR-SEK	3,089.98	3,004.07	960.28	-9.01	0.991	Level 1, CC
HSR-SEKICH #14-17 - HSR-SEKICH #14-17 - HSR-SEK	4,600.00	4,513.15	997.58	-1,180.64	0.458	Level 1, ES, SF
SEKICH 19-17 - SEKICH 19-17 - SEKICH 19-17 (wp02)	800.00	800.00	19.98	16.61	5.927	CC
SEKICH 19-17 - SEKICH 19-17 - SEKICH 19-17 (wp02)	900.00	899.30	20.36	16.56	5.359	ES
SEKICH 19-17 - SEKICH 19-17 - SEKICH 19-17 (wp02)	1,000.00	998.55	21.72	17.50	5.150	SF
SEKICH 20-17 - SEKICH 20-17 - SEKICH 20-17 (wp01)	800.00	800.00	20.18	16.81	5.985	CC, ES
SEKICH 20-17 - SEKICH 20-17 - SEKICH 20-17 (wp01)	900.00	899.71	22.19	18.39	5.840	SF
SEKICH 23-17 - SEKICH 23-17 - SEKICH 23-17 (wp02)	800.00	800.00	9.99	6.62	2.964	CC
SEKICH 23-17 - SEKICH 23-17 - SEKICH 23-17 (wp02)	900.00	899.68	10.22	6.41	2.685	ES, SF
SEKICH 35-17 - SEKICH 35-17 - SEKICH 35-17 (wp01)	800.00	800.00	9.97	6.60	2.958	CC
SEKICH 35-17 - SEKICH 35-17 - SEKICH 35-17 (wp01)	900.00	900.25	10.14	6.35	2.674	ES
SEKICH 35-17 - SEKICH 35-17 - SEKICH 35-17 (wp01)	1,100.00	1,100.73	11.59	6.97	2.506	SF
SEKICH 37-17 - SEKICH 37-17 - SEKICH 37-17 (wp01)	800.00	800.00	29.93	26.56	8.879	CC, ES
SEKICH 37-17 - SEKICH 37-17 - SEKICH 37-17 (wp01)	900.00	898.99	32.88	29.09	8.678	SF
SEKICH FARMS II UNIT #1 - SEKICH FARMS II UNIT #						Out of range



<b>Company:</b>	US ROCKIES REGION PLANNING	<b>Local Co-ordinate Reference:</b>	Well SEKICH 36-17
<b>Project:</b>	COLORADO NORTHERN ZONE - 83	<b>TVD Reference:</b>	WELL @ 4865.00ft (Original Well Elev)
<b>Reference Site:</b>	SEKICH 23-17	<b>MD Reference:</b>	WELL @ 4865.00ft (Original Well Elev)
<b>Site Error:</b>	0.00 ft	<b>North Reference:</b>	True
<b>Reference Well:</b>	SEKICH 36-17	<b>Survey Calculation Method:</b>	Minimum Curvature
<b>Well Error:</b>	0.00 ft	<b>Output errors are at</b>	2.00 sigma
<b>Reference Wellbore</b>	SEKICH 36-17	<b>Database:</b>	edm5000p
<b>Reference Design:</b>	SEKICH 36-17 (wp01)	<b>Offset TVD Reference:</b>	Offset Datum

Reference Depths are relative to WELL @ 4865.00ft (Original Well Elev) Coordinates are relative to: SEKICH 36-17  
Offset Depths are relative to Offset Datum  
Coordinate System is US State Plane 1983, Colorado Northern Zone  
Central Meridian is -105.500000  
Grid Convergence at Surface is: 0.38°



<b>Company:</b>	US ROCKIES REGION PLANNING	<b>Local Co-ordinate Reference:</b>	Well SEKICH 36-17
<b>Project:</b>	COLORADO NORTHERN ZONE - 83	<b>TVD Reference:</b>	WELL @ 4865.00ft (Original Well Elev)
<b>Reference Site:</b>	SEKICH 23-17	<b>MD Reference:</b>	WELL @ 4865.00ft (Original Well Elev)
<b>Site Error:</b>	0.00 ft	<b>North Reference:</b>	True
<b>Reference Well:</b>	SEKICH 36-17	<b>Survey Calculation Method:</b>	Minimum Curvature
<b>Well Error:</b>	0.00 ft	<b>Output errors are at</b>	2.00 sigma
<b>Reference Wellbore</b>	SEKICH 36-17	<b>Database:</b>	edm5000p
<b>Reference Design:</b>	SEKICH 36-17 (wp01)	<b>Offset TVD Reference:</b>	Offset Datum

Reference Depths are relative to WELL @ 4865.00ft (Original Well Elev) Coordinates are relative to: SEKICH 36-17  
Offset Depths are relative to Offset Datum Coordinate System is US State Plane 1983, Colorado Northern Zone  
Central Meridian is -105.500000 Grid Convergence at Surface is: 0.38°

