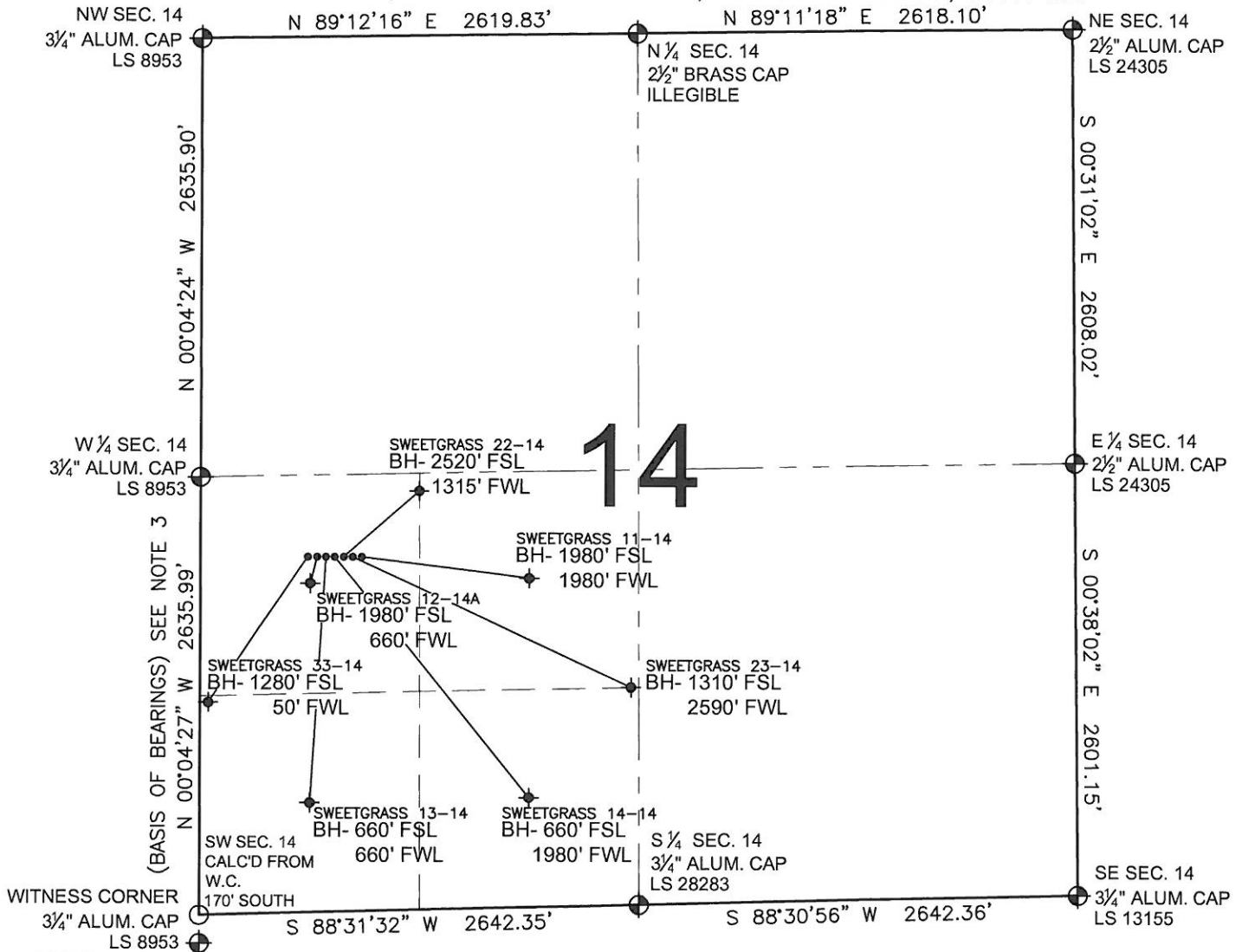


PAD DRAWING - SWEETGRASS 7 PAD

SECTION 14, TOWNSHIP 1 NORTH, RANGE 68 WEST, 6TH P.M.



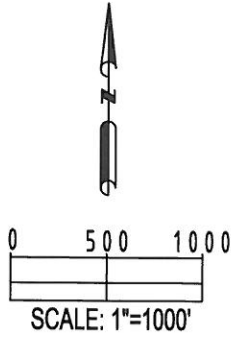
14

LEGEND

- ⊕ = EXISTING MONUMENT
- ⬤ = PROPOSED WELL
- ◆ = BOTTOM HOLE
- ◆ = EXISTING WELL
- BH= BOTTOM HOLE

- NOTES:**
- THIS SURVEY WAS DONE BY GPS METHODS AND CONFORMS TO THE MINIMUM STANDARDS SET BY THE C.O.G.C.C., RULE NO. 215
 - ELEVATIONS SHOWN AT THE WELL HEAD, AS WELL AS HORIZONTAL CONTROL, ARE BASED ON GPS-RTK VALUES DERIVED FROM DOING 2-HOUR STATIC GPS SESSIONS AND REDUCTIONS USING O.P.U.S. SOLUTIONS.
 VERTICAL = NAVD88; HORIZONTAL = NAD83/92
 - THE BEARINGS SHOWN HEREON ARE BASED ON GPS OBSERVATIONS BETWEEN THE MONUMENTS SHOWN HEREON AS FOUND ON THE FIELD DATE BELOW.
 - DISTANCES SHOWN ARE AT GROUND LEVEL, AS MEASURED IN THE FIELD, WITH TIES TO WELLS MEASURED AT A PERPENDICULAR TO SECTION LINES.

- NOTES:**
- SWEETGRASS 33-14 TO BE AT 2139' FSL, 700' FWL. BOTTOM HOLE AT 1280' FSL & 50' FWL.
 - SWEETGRASS 12-14A TO BE AT 2139' FSL, 710' FWL. BOTTOM HOLE AT 1980' FSL & 660' FWL.
 - SWEETGRASS 13-14 TO BE AT 2139' FSL, 720' FWL. BOTTOM HOLE AT 660' FSL & 660' FWL.
 - SWEETGRASS 14-14 TO BE AT 2139' FSL, 730' FWL. BOTTOM HOLE AT 660' FSL & 1980' FWL.
 - SWEETGRASS 22-14 TO BE AT 2138' FSL, 740' FWL. BOTTOM HOLE AT 2520' FSL & 1315' FWL.
 - SWEETGRASS 23-14 TO BE AT 2138' FSL, 750' FWL. BOTTOM HOLE AT 1310' FSL & 2590' FWL.
 - SWEETGRASS 11-14 TO BE AT 2138' FSL, 760' FWL. BOTTOM HOLE AT 1980' FSL & 1980' FWL.



REVISIONS	
INITIAL	DATE
SMF	09-30-10

PREPARED BY:

PFS
 Petroleum Field Services, LLC.
 1801 W. 13th Ave.
 Denver, CO 80204

KERR-MCGEE OIL & GAS ONSHORE LP	
FIELD DATE: 08-10-10	PAD NAME: SWEETGRASS 7 PAD
DRAWING DATE: 08-11-10	SURFACE LOCATION: WELD COUNTY, COLORADO NW 1/4 SW 1/4, SEC. 14, T1N, R68W
BY: SMF	