



Bill Barrett Corporation

Bill Barrett Corp.

Garfield County, Colorado

MDP 3 Pad

GGU Barge Federal 32A-32-691

Wellbore #1

Survey: Surveys

Standard Survey Report

15 October, 2010

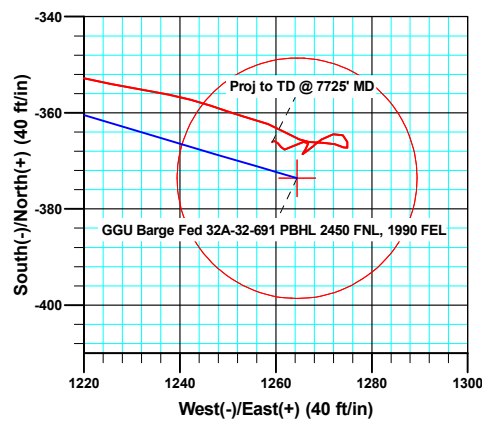
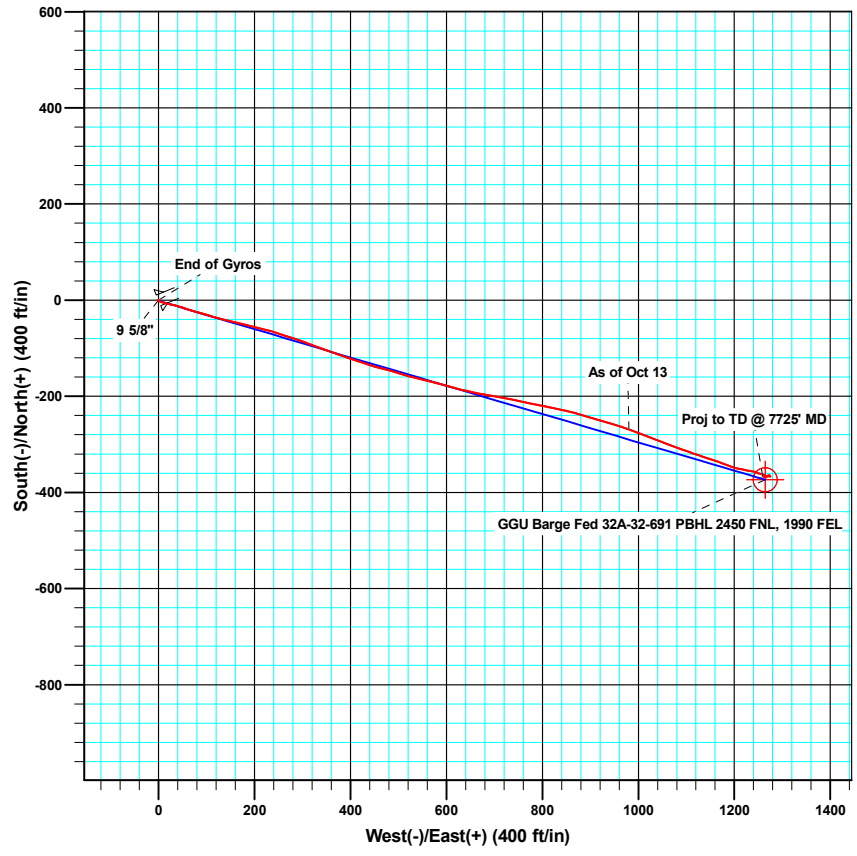
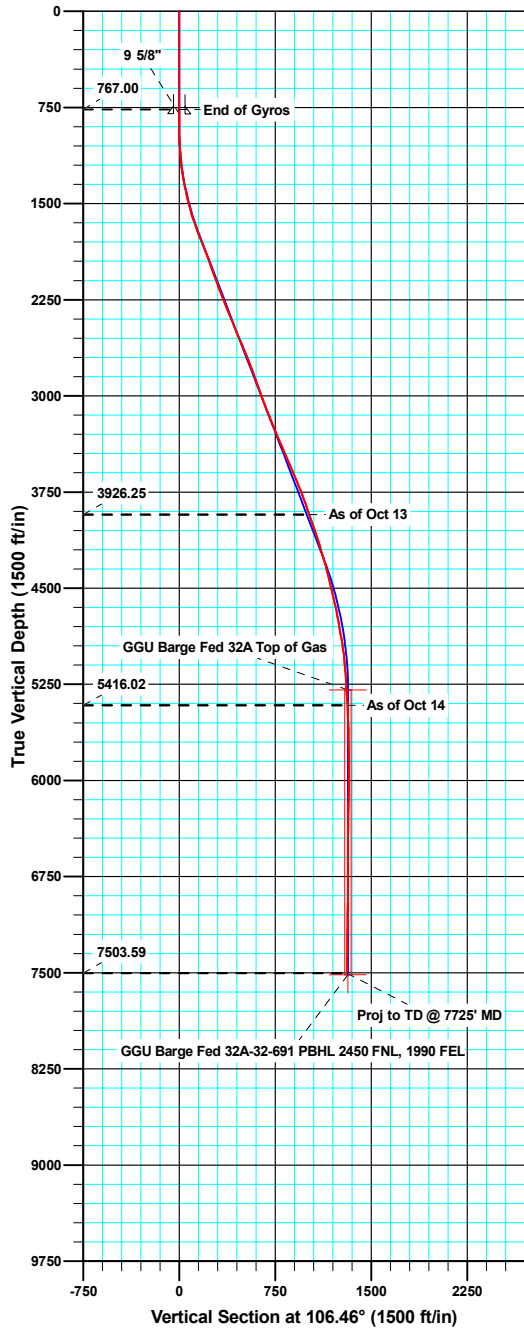




WELL DETAILS: GGU Barge Federal 32A-32-691

Ground Level: 6372.00

North American Datum 1983 , US State Plane 1983 , Colorado Central Zone
 +N/-S +E/-W Northing Easting Latitude Longitude
 0.00 0.00 1608604.24 2413059.61 39° 29' 9.41 N 107° 34' 47.12 W



Azimuths to True North
 Magnetic North: 10.24°

 Magnetic Field
 Strength: 52406.4snT
 Dip Angle: 65.84°
 Date: 08/26/2010
 Model: IGRF200510

ANNOTATIONS

TVD	MD	Inc	Azi	+N/-S	+E/-W	V Sect	Departure	Annotation
3926.25	4111.00	19.30	110.80	-268.83	980.17	1016.17	1018.79	As of Oct 13
5416.02	5637.00	2.90	121.70	-364.52	1262.91	1314.44	1317.82	As of Oct 14
7503.59	7725.00	0.40	228.30	-366.13	1259.22	1311.36	1356.58	Proj to TD @ 7725' MD



Company:	Bill Barrett Corp.	Local Co-ordinate Reference:	Well GGU Barge Federal 32A-32-691
Project:	Garfield County, Colorado	TVD Reference:	KB @ 6394.00ft
Site:	MDP 3 Pad	MD Reference:	KB @ 6394.00ft
Well:	GGU Barge Federal 32A-32-691	North Reference:	True
Wellbore:	Wellbore #1	Survey Calculation Method:	Minimum Curvature
Design:	Wellbore #1	Database:	Compass VM

Project	Garfield County, Colorado		
Map System:	US State Plane 1983	System Datum:	Mean Sea Level
Geo Datum:	North American Datum 1983		
Map Zone:	Colorado Central Zone		

Site	MDP 3 Pad				
Site Position:		Northing:	1,608,618.77 usft	Latitude:	39° 29' 9.55 N
From:	Lat/Long	Easting:	2,413,031.56 usft	Longitude:	107° 34' 47.48 W
Position Uncertainty:	0.00 ft	Slot Radius:	1.10 ft	Grid Convergence:	-1.31 °

Well	GGU Barge Federal 32A-32-691					
Well Position	+N/-S	0.00 ft	Northing:	1,608,604.24 usft	Latitude:	39° 29' 9.41 N
	+E/-W	0.00 ft	Easting:	2,413,059.62 usft	Longitude:	107° 34' 47.12 W
Position Uncertainty		0.00 ft	Wellhead Elevation:	ft	Ground Level:	6,372.00 ft

Wellbore	Wellbore #1				
Magnetics	Model Name	Sample Date	Declination (°)	Dip Angle (°)	Field Strength (nT)
	IGRF200510	08/26/10	10.24	65.84	52,406

Design	Wellbore #1				
Audit Notes:					
Version:	1.0	Phase:	ACTUAL	Tie On Depth:	0.00
Vertical Section:	Depth From (TVD) (ft)	+N/-S (ft)	+E/-W (ft)	Direction (°)	
	0.00	0.00	0.00	106.46	

Survey Program	Date	10/15/10			
From (ft)	To (ft)	Survey (Wellbore)	Tool Name	Description	
50.00	767.00	Gyro Surveys (Wellbore #1)	MWD	MWD - Standard	
882.00	7,725.00	Surveys (Wellbore #1)	MWD	MWD - Standard	

Survey										
Measured Depth (ft)	Inclination (°)	Azimuth (°)	Vertical Depth (ft)	+N/-S (ft)	+E/-W (ft)	Vertical Section (ft)	Dogleg Rate (°/100ft)	Build Rate (°/100ft)	Turn Rate (°/100ft)	
767.00	0.28	258.23	767.00	-0.30	0.37	0.44	0.00	0.00	0.00	
800.00	0.28	248.35	800.00	-0.35	0.21	0.30	0.15	-0.01	-29.94	
9 5/8"										
882.00	0.30	224.90	882.00	-0.57	-0.12	0.05	0.15	0.03	-28.60	
974.00	1.60	125.00	973.98	-1.48	0.76	1.15	1.82	1.41	-108.59	
1,066.00	3.40	112.20	1,065.89	-3.25	4.34	5.08	2.04	1.96	-13.91	
1,158.00	5.50	106.40	1,157.61	-5.52	11.10	12.21	2.33	2.28	-6.30	
1,250.00	7.90	102.00	1,248.98	-8.08	21.51	22.92	2.67	2.61	-4.78	
1,346.00	10.80	103.40	1,343.69	-11.54	36.72	38.48	3.03	3.02	1.46	
1,441.00	12.90	109.70	1,436.67	-17.18	55.36	57.96	2.59	2.21	6.63	

Company:	Bill Barrett Corp.	Local Co-ordinate Reference:	Well GGU Barge Federal 32A-32-691
Project:	Garfield County, Colorado	TVD Reference:	KB @ 6394.00ft
Site:	MDP 3 Pad	MD Reference:	KB @ 6394.00ft
Well:	GGU Barge Federal 32A-32-691	North Reference:	True
Wellbore:	Wellbore #1	Survey Calculation Method:	Minimum Curvature
Design:	Wellbore #1	Database:	Compass VM

Survey										
Measured Depth (ft)	Inclination (°)	Azimuth (°)	Vertical Depth (ft)	+N/-S (ft)	+E/-W (ft)	Vertical Section (ft)	Dogleg Rate (°/100ft)	Build Rate (°/100ft)	Turn Rate (°/100ft)	
1,537.00	15.20	106.00	1,529.79	-24.26	77.55	81.25	2.57	2.40	-3.85	
1,632.00	18.10	106.00	1,620.80	-31.76	103.72	108.46	3.05	3.05	0.00	
1,728.00	20.30	104.00	1,711.45	-39.90	134.21	140.02	2.39	2.29	-2.08	
1,823.00	22.50	103.30	1,799.90	-48.07	167.90	174.64	2.33	2.32	-0.74	
1,918.00	21.40	103.50	1,888.01	-56.30	202.44	210.10	1.16	-1.16	0.21	
2,014.00	20.00	106.20	1,977.81	-64.97	235.24	244.01	1.76	-1.46	2.81	
2,109.00	19.30	107.60	2,067.28	-74.25	265.80	275.95	0.89	-0.74	1.47	
2,204.00	21.10	109.80	2,156.43	-84.79	296.86	308.72	2.06	1.89	2.32	
2,299.00	21.20	110.30	2,245.03	-96.54	329.06	342.93	0.22	0.11	0.53	
2,395.00	22.10	110.30	2,334.26	-108.83	362.28	378.27	0.94	0.94	0.00	
2,490.00	22.40	107.90	2,422.19	-120.59	396.26	414.19	1.01	0.32	-2.53	
2,585.00	22.90	108.10	2,509.86	-131.90	431.06	450.76	0.53	0.53	0.21	
2,680.00	23.10	104.60	2,597.31	-142.34	466.66	487.87	1.45	0.21	-3.68	
2,776.00	22.40	107.10	2,685.85	-152.46	502.37	524.98	1.24	-0.73	2.60	
2,871.00	21.10	104.10	2,774.08	-161.95	536.26	560.17	1.80	-1.37	-3.16	
2,967.00	20.00	103.90	2,863.97	-170.11	568.95	593.84	1.15	-1.15	-0.21	
3,062.00	19.20	104.80	2,953.47	-178.00	599.83	625.68	0.90	-0.84	0.95	
3,157.00	20.40	104.90	3,042.85	-186.25	630.93	657.85	1.26	1.26	0.11	
3,253.00	21.40	99.50	3,132.54	-193.44	664.38	691.96	2.26	1.04	-5.63	
3,348.00	22.20	101.00	3,220.75	-199.73	699.09	727.03	1.03	0.84	1.58	
3,444.00	23.00	101.50	3,309.38	-206.93	735.27	763.77	0.86	0.83	0.52	
3,539.00	24.00	101.10	3,396.50	-214.35	772.42	801.50	1.07	1.05	-0.42	
3,634.00	23.30	101.50	3,483.52	-221.81	809.79	839.45	0.76	-0.74	0.42	
3,730.00	24.00	102.90	3,571.45	-229.96	847.43	877.85	0.93	0.73	1.46	
3,825.00	23.10	106.50	3,658.55	-239.56	884.13	915.78	1.79	-0.95	3.79	
3,920.00	21.30	106.30	3,746.50	-249.70	918.56	951.67	1.90	-1.89	-0.21	
4,016.00	19.20	106.00	3,836.56	-258.95	950.48	984.89	2.19	-2.19	-0.31	
4,111.00	19.30	110.80	3,926.25	-268.83	980.17	1,016.17	1.67	0.11	5.05	
4,206.00	19.20	111.40	4,015.94	-280.10	1,009.39	1,047.39	0.23	-0.11	0.63	
4,302.00	18.30	110.60	4,106.85	-291.16	1,038.20	1,078.15	0.97	-0.94	-0.83	
4,397.00	16.10	110.70	4,197.59	-301.07	1,064.48	1,106.16	2.32	-2.32	0.11	
4,492.00	16.60	108.50	4,288.75	-310.03	1,089.67	1,132.86	0.84	0.53	-2.32	
4,588.00	14.60	110.30	4,381.21	-318.58	1,114.03	1,158.64	2.14	-2.08	1.88	
4,683.00	13.50	107.70	4,473.37	-326.11	1,135.82	1,181.68	1.33	-1.16	-2.74	
4,778.00	13.30	108.50	4,565.78	-332.95	1,156.75	1,203.68	0.29	-0.21	0.84	
4,874.00	12.10	111.40	4,659.43	-340.12	1,176.59	1,224.74	1.42	-1.25	3.02	
4,969.00	9.70	108.40	4,752.71	-346.28	1,193.46	1,242.66	2.60	-2.53	-3.16	
5,065.00	10.70	102.20	4,847.20	-350.72	1,209.84	1,259.64	1.55	1.04	-6.46	
5,160.00	8.90	100.90	4,940.81	-353.97	1,225.68	1,275.75	1.91	-1.89	-1.37	
5,255.00	5.80	100.40	5,035.02	-356.23	1,237.62	1,287.84	3.26	-3.26	-0.53	
5,351.00	5.20	109.30	5,130.58	-358.54	1,246.50	1,297.01	1.08	-0.63	9.27	
5,446.00	3.30	105.80	5,225.31	-360.71	1,253.19	1,304.04	2.02	-2.00	-3.68	
5,541.00	3.20	109.60	5,320.16	-362.34	1,258.32	1,309.42	0.25	-0.11	4.00	

Company:	Bill Barrett Corp.	Local Co-ordinate Reference:	Well GGU Barge Federal 32A-32-691
Project:	Garfield County, Colorado	TVD Reference:	KB @ 6394.00ft
Site:	MDP 3 Pad	MD Reference:	KB @ 6394.00ft
Well:	GGU Barge Federal 32A-32-691	North Reference:	True
Wellbore:	Wellbore #1	Survey Calculation Method:	Minimum Curvature
Design:	Wellbore #1	Database:	Compass VM

Survey										
Measured Depth (ft)	Inclination (°)	Azimuth (°)	Vertical Depth (ft)	+N/-S (ft)	+E/-W (ft)	Vertical Section (ft)	Dogleg Rate (°/100ft)	Build Rate (°/100ft)	Turn Rate (°/100ft)	
5,637.00	2.90	121.70	5,416.02	-364.52	1,262.91	1,314.44	0.74	-0.31	12.60	
5,732.00	2.40	98.60	5,510.92	-366.08	1,266.92	1,318.73	1.23	-0.53	-24.32	
5,827.00	1.40	83.90	5,605.87	-366.25	1,270.04	1,321.77	1.16	-1.05	-15.47	
5,923.00	1.40	108.40	5,701.84	-366.50	1,272.32	1,324.03	0.62	0.00	25.52	
6,018.00	0.90	115.60	5,796.82	-367.19	1,274.10	1,325.92	0.55	-0.53	7.58	
6,114.00	0.40	28.50	5,892.82	-367.22	1,274.94	1,326.74	1.01	-0.52	-90.73	
6,209.00	1.10	349.00	5,987.81	-366.03	1,274.92	1,326.39	0.87	0.74	-41.58	
6,305.00	1.10	301.60	6,083.79	-364.64	1,273.96	1,325.07	0.92	0.00	-49.38	
6,400.00	1.50	255.70	6,178.77	-364.47	1,271.98	1,323.12	1.14	0.42	-48.32	
6,495.00	1.70	238.30	6,273.74	-365.52	1,269.58	1,321.11	0.55	0.21	-18.32	
6,591.00	0.30	211.50	6,369.72	-366.48	1,268.23	1,320.10	1.50	-1.46	-27.92	
6,686.00	0.40	231.00	6,464.72	-366.90	1,267.84	1,319.85	0.16	0.11	20.53	
6,781.00	1.70	232.90	6,559.70	-367.96	1,266.46	1,318.82	1.37	1.37	2.00	
6,877.00	0.40	45.30	6,655.69	-368.59	1,265.57	1,318.14	2.18	-1.35	179.58	
6,972.00	1.10	26.00	6,750.68	-367.53	1,266.20	1,318.45	0.77	0.74	-20.32	
7,068.00	0.50	24.60	6,846.67	-366.32	1,266.78	1,318.66	0.63	-0.63	-1.46	
7,163.00	1.40	266.30	6,941.66	-366.02	1,265.79	1,317.63	1.78	0.95	-124.53	
7,258.00	1.80	233.80	7,036.62	-366.98	1,263.43	1,315.64	1.03	0.42	-34.21	
7,353.00	0.50	296.80	7,131.61	-367.67	1,261.86	1,314.32	1.72	-1.37	66.32	
7,449.00	0.60	314.90	7,227.60	-367.13	1,261.13	1,313.47	0.21	0.10	18.85	
7,544.00	0.70	320.50	7,322.60	-366.33	1,260.41	1,312.55	0.12	0.11	5.89	
7,640.00	0.40	277.20	7,418.59	-365.84	1,259.70	1,311.73	0.51	-0.31	-45.10	
7,678.00	0.40	228.30	7,456.59	-365.91	1,259.47	1,311.53	0.87	0.00	-128.68	
7,725.00	0.40	228.30	7,503.59	-366.13	1,259.22	1,311.36	0.00	0.00	0.00	

Casing Points					
Measured Depth (ft)	Vertical Depth (ft)	Name	Casing Diameter (ft)	Hole Diameter (ft)	
800.00	800.00	9 5/8"	0.80	1.02	

Survey Annotations					
Measured Depth (ft)	Vertical Depth (ft)	Local Coordinates		Comment	
		+N/-S (ft)	+E/-W (ft)		
4,111.00	3,926.25	-268.83	980.17	As of Oct 13	
5,637.00	5,416.02	-364.52	1,262.91	As of Oct 14	
7,725.00	7,503.59	-366.13	1,259.22	Proj to TD @ 7725' MD	

Checked By: _____ Approved By: _____ Date: _____