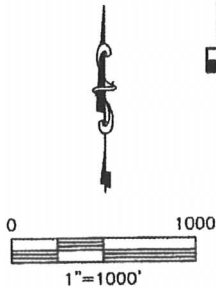
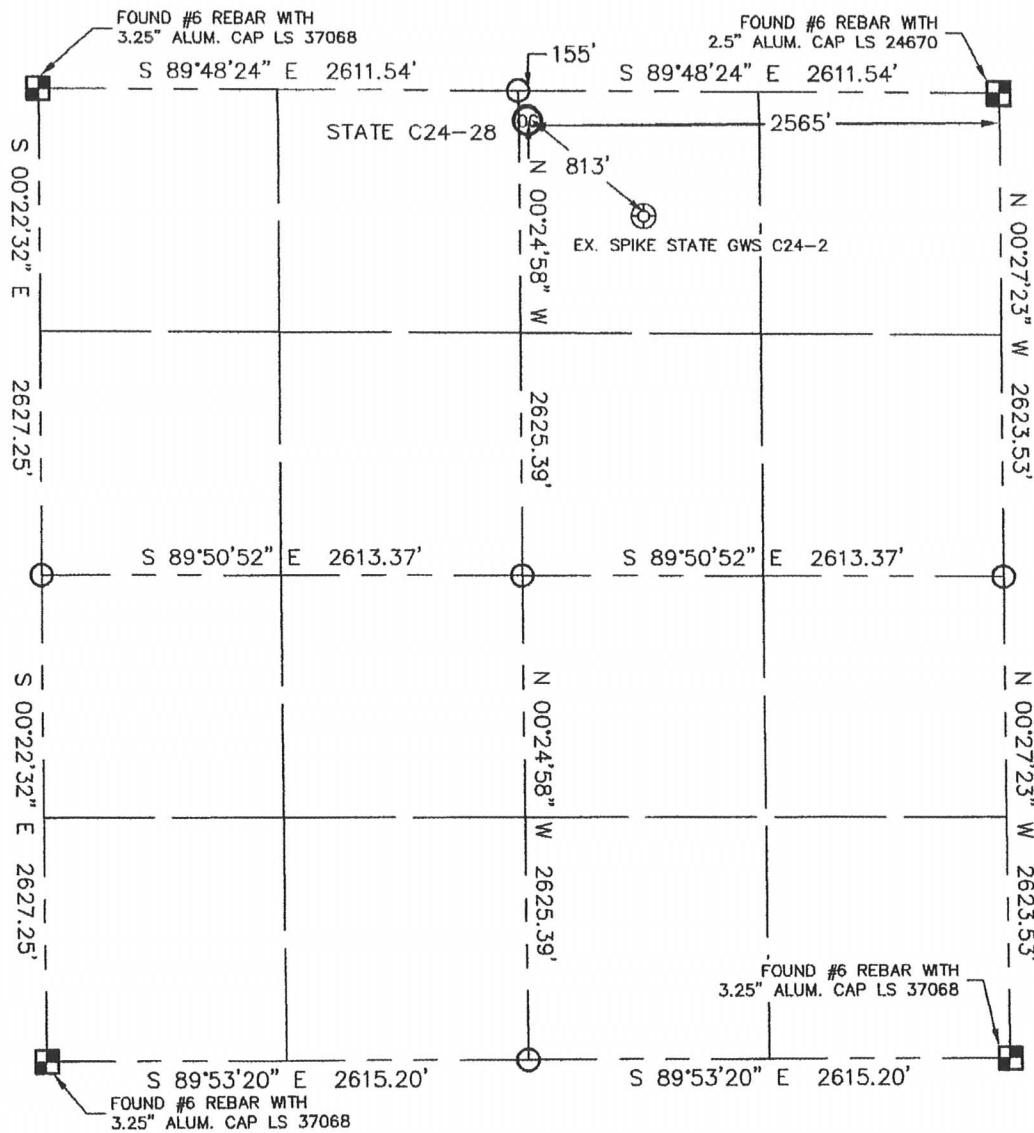


# WELL LOCATION CERTIFICATE

THIS MAP DOES NOT REPRESENT A BOUNDARY SURVEY

SECTION: 24  
TOWNSHIP: 4N  
RANGE: 64W



In accordance with a request from MATT CAMPBELL with Noble Energy Inc. Lat40°, LLC has determined the surface location of the STATE C24-28 to be 155' from the NORTH line and 2565' from the EAST line as measured at right angles from the section line of Section 24, Township 4 North, Range 64 West of the Sixth Principal Meridian, County of Weld, State of Colorado.

I hereby state that this Well Location Certificate was prepared by me, or under my direct supervision, that the fieldwork was completed on 9/8/10, for and on behalf of Noble Energy Inc. That this is not a Land Survey Plat or an Improvement Survey Plat, and that it is not to be relied upon for establishment of fence, building, or other future improvement lines.

**NOTE:**

- 1) Bearings shown are Grid Bearings of the Colorado State Plane Coordinate System, North Zone, North American Datum 1983/2007. The lineal dimensions as contained herein are based upon the "U.S. Survey Foot."
- 2) Ground elevations are based on an observed GPS elevation (NAVD 1988 DATUM).
- 3) NEAREST EXISTING WELL: SPIKE STATE GWS C24-2 813'
- 4) IMPROVEMENTS: See LOCATION DRAWING for all visible improvements within 400' of disturbed area.
- 5) SURFACE USE: RANGELAND
- 6) INSTRUMENT OPERATOR: KYLE RUTZ

SURFACE LOCATION  
LATITUDE: 40.30459°N  
LONGITUDE: 104.49888°W  
PDOP: 1.6  
ELEV: 4658  
1/4, 1/4: NW1/4NE1/4  
NEAREST PROPERTY LINE: 155' NORTH



**NOTE**

According to Colorado law, you must commence any legal action based upon any defect in this W.L.C. within three years after you discover such defect. In no event, may any action based upon any defect in this survey be commenced more than ten years after the date of the certificate shown hereon. (13-80-105 C.R.S.)

## LEGEND

- = ALIQUOT MONUMENT AS DESCRIBED
- = CALCULATED POSITION

Brian T. Brinkman—On behalf of Lat40°, LLC  
Colorado Licensed Professional  
Land Surveyor No. 38175

PROJECT#: 2010058

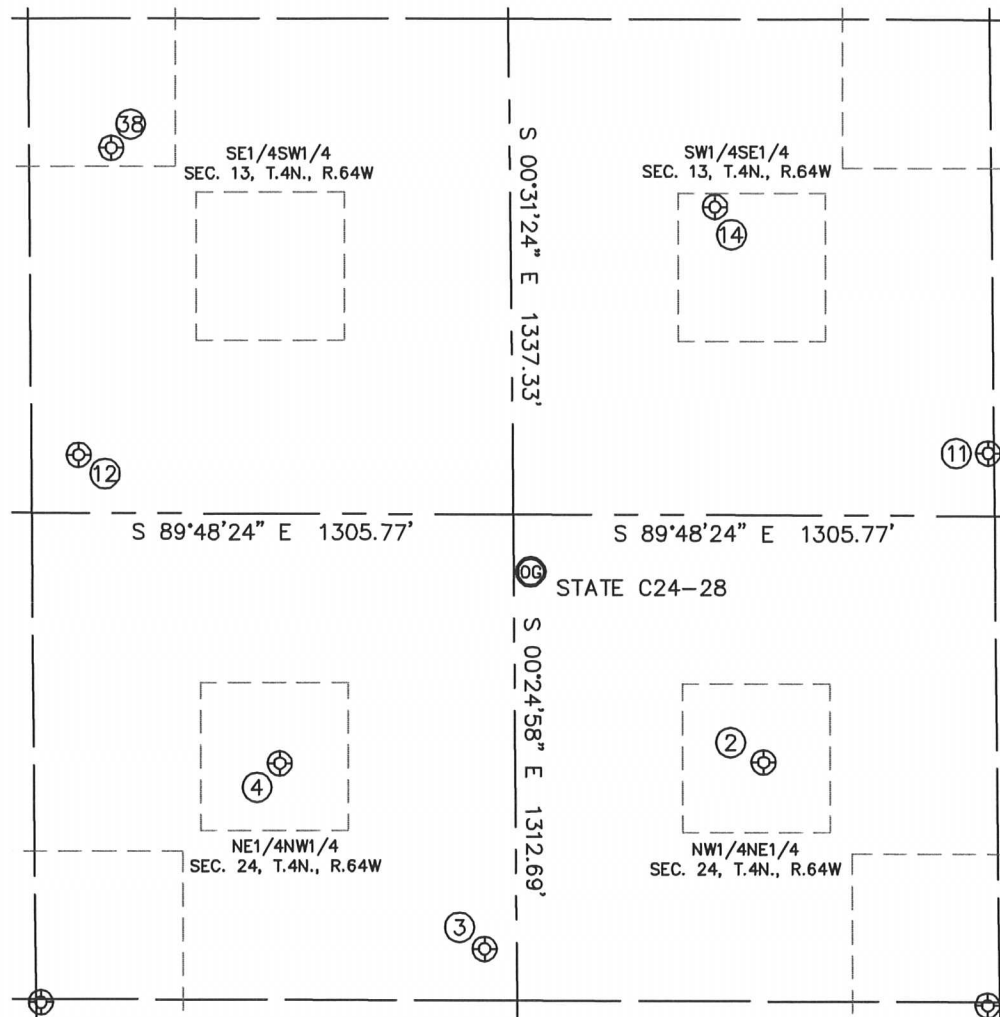
Lat40°, LLC

1635 Foxtrail Drive, Suite 325

Loveland, CO 80538

**SITE SKETCH**

STATE C24-28

SECTION: 24  
TOWNSHIP: 4N  
RANGE: 64W

②	③	④	⑪	⑫	⑭	③⑧
SPIKE STATE GWS C24-2	ELISE STATE C24-18	SPIKE STATE GWS C24-3	SATER C24-27	SATER C24-29	UPV 13-1514	UPV 13-1414
NW1/4NE1/4	NE1/4NW1/4	NE1/4NW1/4	SW1/4SE1/4	SE1/4SW1/4	SW1/4SE1/4	SE1/4SW1/4
667' FNL	1174' FNL	675' FNL	170' FSL	156' FSL	832' FSL	985' FSL
1940' FEL	2504' FWL	1975' FWL	1321' FEL	1433' FWL	2056' FEL	1528' FWL
LAT-40.30316°N	LAT-40.30180°N	LAT-40.30319°N	LAT-40.30543°N	LAT-40.30549°N	LAT-40.30728°N	LAT-40.30776°N
LONG-104.49664°W	LONG-104.49937°W	LONG-104.50134°W	LONG-104.49442°W	LONG-104.50326°W	LONG-104.49705°W	LONG-104.50291°W
PDOP: 1.5	PDOP: 1.5	PDOP: 1.3	PDOP: 1.3	PDOP: 1.4	PDOP: 1.2	PDOP: 2.4
ELEV: 4687	ELEV: 4677	ELEV: 4660	ELEV: 4663	ELEV: 4679	ELEV: 4664	ELEV: 4661

