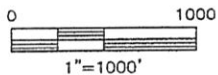
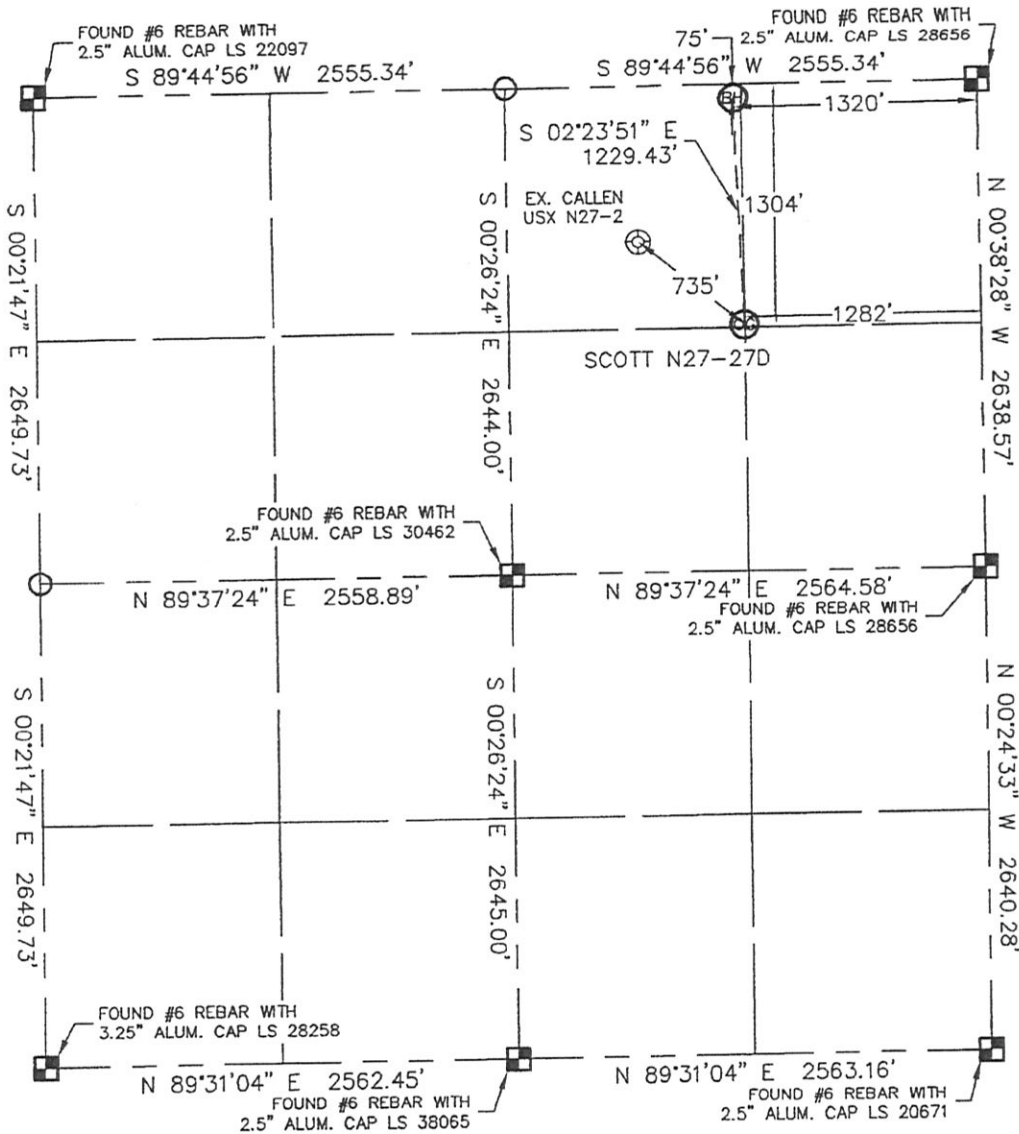


# WELL LOCATION CERTIFICATE

THIS MAP DOES NOT REPRESENT A BOUNDARY SURVEY

SECTION: 27  
TOWNSHIP: 5N  
RANGE: 67W



In accordance with a request from BEAU FRITZ with Noble Energy Inc. Lat40°, LLC has determined the surface location of the SCOTT N27-27D to be 1304' from the NORTH line and 1282' from the EAST line and the bottom hole to be 75' from the NORTH line and 1320' from the EAST line as measured at right angles from the section line of Section 27, Township 5 North, Range 67 West of the Sixth Principal Meridian, County of Weld, State of Colorado.

I hereby state that this Well Location Certificate was prepared by me, or under my direct supervision, that the fieldwork was completed on 8/27/10, for and on behalf of Noble Energy Inc. That this is not a Land Survey Plat or an Improvement Survey Plat, and that it is not to be relied upon for establishment of fence, building, or other future improvement lines.

## NOTE:

- 1) Bearings shown are Grid Bearings of the Colorado State Plane Coordinate System, North Zone, North American Datum 1983/2007. The lineal dimensions as contained herein are based upon the "U.S. Survey Foot."
- 2) Ground elevations are based on an observed GPS elevation (NAVD 1988 DATUM).
- 3) NEAREST EXISTING WELL: CALLEN USX N27-2 735'
- 4) IMPROVEMENTS: See LOCATION DRAWING for all visible improvements within 400' of disturbed area.
- 5) SURFACE USE: CROP, DRYLAND
- 6) INSTRUMENT OPERATOR: BRIAN BRINKMAN

## NOTE

According to Colorado law, you must commence any legal action based upon any defect in this W.L.C. within three years after you discover such defect. In no event, may any action based upon any defect in this survey be commenced more than ten years after the date of the certificate shown hereon. (13-80-105 C.R.S.)

## LEGEND

- = ALIQUOT MONUMENT AS DESCRIBED
- = CALCULATED POSITION

SURFACE LOCATION  
LATITUDE: 40.37435°N  
LONGITUDE: 104.87440°W  
PDOP: 1.9  
ELEV: 4964  
1/4, 1/4: NW1/4NE1/4  
NEAREST PROPERTY LINE: 413' W

BOTTOM HOLE  
LATITUDE: 40.37772°N  
LONGITUDE: 104.87456°W



Brian T. Brinkman—On the staff of Lat40°, LLC  
Colorado Licensed Professional Land Surveyor No. 38175  
PROJECT#: 2010059

Lat40°, LLC

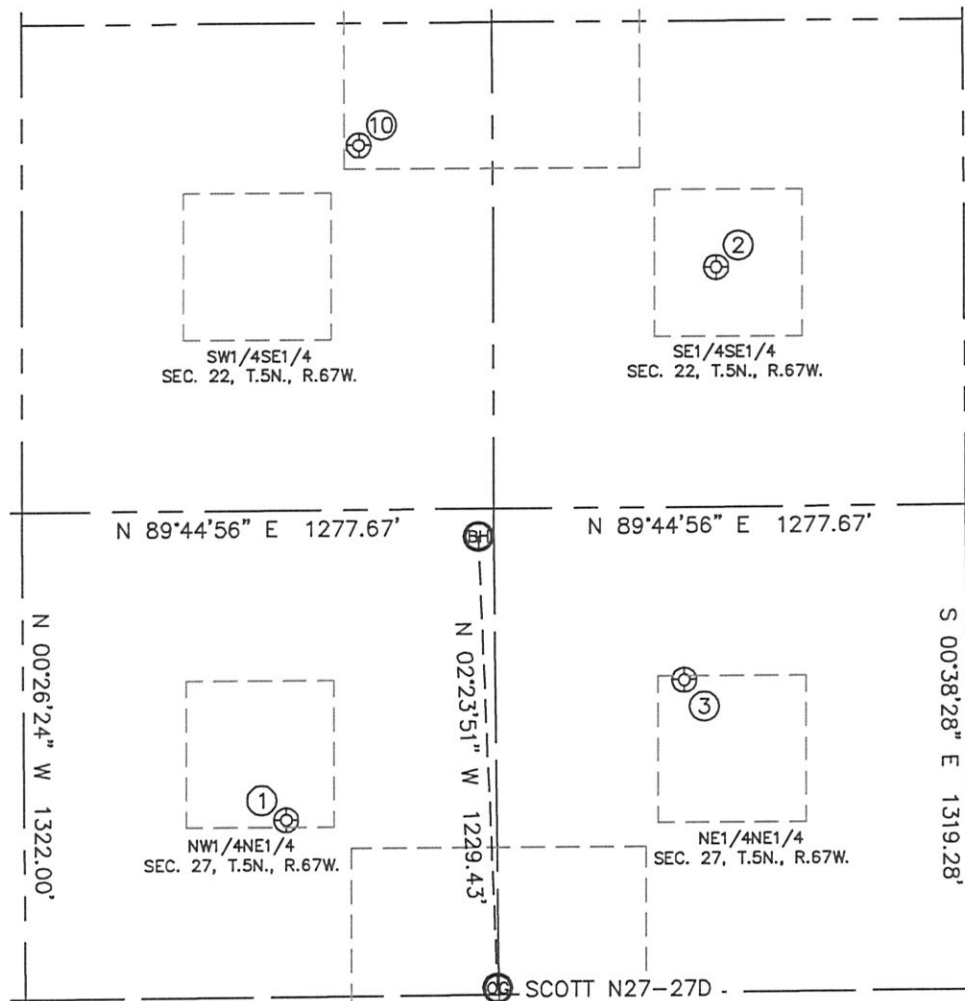
1635 Foxtrail Drive, Suite 325

Loveland, CO 80538

# SITE SKETCH

SCOTT N27-27D

SECTION: 27  
TOWNSHIP: 5N  
RANGE: 67W



①

CALLEN USX N27-2  
NW1/4NE1/4  
841' FNL  
1850' FEL  
LAT-40.37562N  
LONG-104.87645W  
PDOP: 1.6  
ELEV: 4949

②

HANKINS 22-44  
SE1/4SE1/4  
650' FSL  
670' FEL  
LAT-40.37971N  
LONG-104.87223W  
PDOP: 1.5  
ELEV: 5031

③

SCOTT N27-1  
NE1/4NE1/4  
470' FNL  
766' FEL  
LAT-40.37663N  
LONG-104.87256W  
PDOP: 1.5  
ELEV: 5005

⑩

HANKINS #2  
SW1/4SE1/4  
990' FSL  
1636' FEL  
LAT-40.38065N  
LONG-104.87569W  
PDOP: 2.4  
ELEV: 5016

