



Field Receipt: 1001728767

## CEMENT POST JOB REPORT

**Kerr-McGee**  
**Brown 3-2 – Sidetrack Plug**  
**Wattenberg Field**  
**Weld County**  
**Colorado**  
API # 05-123-31679-0000  
Treatment Date 12/5/10



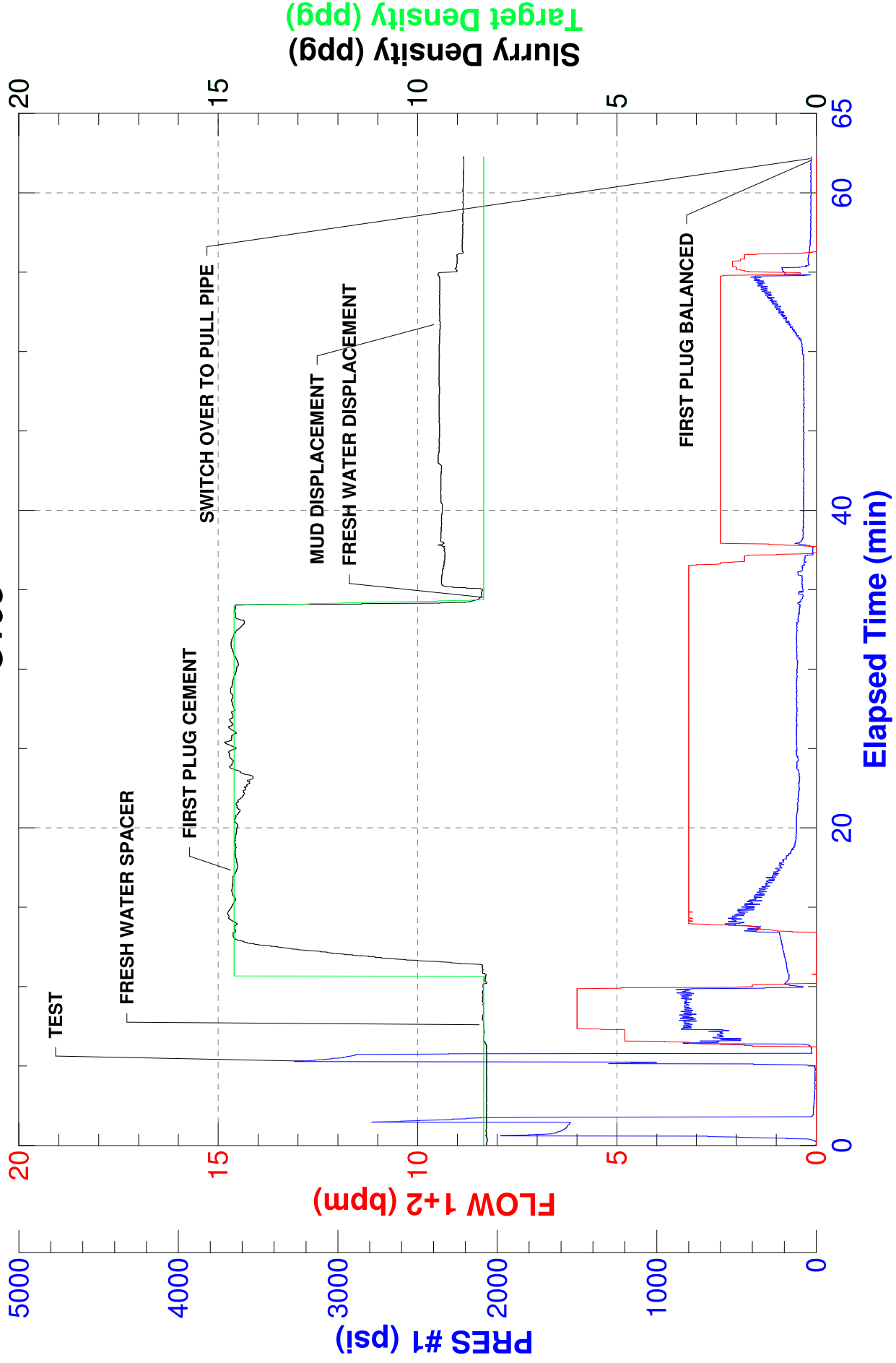
# CEMENT JOB REPORT



<b>CUSTOMER</b> Kerr-McGee Corporation (Offsh			<b>DATE</b> 05-DEC-10		<b>F.R. #</b> 1001728767		<b>SERV. SUPV.</b> BARLEN M JOYNER					
<b>LEASE &amp; WELL NAME</b> BROWN #3-2 - API 05123316790000			<b>LOCATION</b> 2-1N-66W				<b>COUNTY-PARISH-BLOCK</b> Weld Colorado					
<b>DISTRICT</b> Brighton			<b>DRILLING CONTRACTOR RIG #</b> Xtreme 11				<b>TYPE OF JOB</b> Plug Back					
<b>SIZE &amp; TYPE OF PLUGS</b>			<b>LIST-CSG-HARDWARE</b>			<b>PHYSICAL SLURRY PROPERTIES</b>						
						<b>SACKS OF CEMENT</b>	<b>SLURRY WGT PPG</b>	<b>SLURRY YLD FT<sup>3</sup></b>	<b>WATER GPS</b>	<b>PUMP TIME HR:MIN</b>	<b>Bbl SLURRY</b>	<b>Bbl MIX WATER</b>
<b>MATERIALS FURNISHED BY BJ</b>												
Fresh Water						0	8.34	0	0	00:00	20	
50:50 Poz:G + Adds						300	14.6	1.38	5.90	02:30	73.7	42.12
Fresh Water						0	8.34	0	0	00:00	4	
Drilling Mud						0	9.3	0	0	00:00	71	
Fresh Water						0	8.34	0	0	00:00	20	
Class "G" + Adds						460	17	0.99	3.76	00:00	81.1	41.10
Fresh Water						0	8.34	0	0	00:00	4	
Drilling Mud						0	9.3	0	0	00:00	40	
<b>Available Mix Water</b> 900 <b>Bbl.</b> <b>Available Displ. Fluid</b> 700 <b>Bbl.</b>						<b>TOTAL</b>			313.8			83.22
<b>HOLE</b>			<b>TBG-CSG-D.P.</b>					<b>COLLAR DEPTHS</b>				
<b>SIZE</b>	<b>% EXCESS</b>	<b>DEPTH</b>	<b>SIZE</b>	<b>WGT.</b>	<b>TYPE</b>	<b>DEPTH</b>	<b>GRADE</b>	<b>SHOE</b>	<b>FLOAT</b>	<b>STAGE</b>		
8.75	0	8325	4	14	DP	8250					0	
<b>LAST CASING</b>			<b>PKR-CMT RET-BR PL-LINER</b>			<b>PERF. DEPTH</b>		<b>TOP CONN</b>		<b>WELL FLUID</b>		
<b>SIZE</b>	<b>WGT</b>	<b>TYPE</b>	<b>DEPTH</b>	<b>BRAND &amp; TYPE</b>		<b>DEPTH</b>	<b>TOP</b>	<b>BTM</b>	<b>SIZE</b>	<b>THREAD</b>	<b>TYPE</b>	<b>WGT.</b>
8.625	36	CSG	1128	NO LINER		0	0	0	4	8RD	WATER BASED MU	9.3
<b>DISPL. VOLUME</b>		<b>DISPL. FLUID</b>		<b>CAL. PSI</b>	<b>CAL. MAX PSI</b>	<b>OP. MAX</b>	<b>MAX TBG PSI</b>		<b>MAX CSG PSI</b>		<b>MIX WATER</b>	
<b>VOLUME</b>	<b>UOM</b>	<b>TYPE</b>	<b>WGT.</b>	<b>BUMP PLUG</b>	<b>TO REV.</b>	<b>SQ. PSI</b>	<b>RATED</b>	<b>Operator</b>	<b>RATED</b>	<b>Operator</b>		
115.5	BBLS	Drilling Mud	9.3	0	0	0	0	0	6352	2000	RIG TANK	
		Drilling Mud	9.3									
<b>EXPLANATION: TROUBLE SETTING TOOL, RUNNING CSG, ETC. PRIOR TO CEMENTING: NONE</b>												
<b>PRESSURE/RATE DETAIL</b>							<b>EXPLANATION</b>					
<b>TIME HR:MIN.</b>	<b>PRESSURE - PSI</b>		<b>RATE BPM</b>	<b>Bbl. FLUID PUMPED</b>	<b>FLUID TYPE</b>	<b>SAFETY MEETING: BJ CREW</b> <input checked="" type="checkbox"/> <b>CO. REP.</b> <input checked="" type="checkbox"/>						
	<b>PIPE</b>	<b>ANNULUS</b>				<b>TEST LINES</b> 0 PSI						
						<b>CIRCULATING WELL - RIG</b> <input checked="" type="checkbox"/> <b>BJ</b> <input type="checkbox"/>						
01:04	0	0	0	0	N/A	PRE-RIG UP SAFETY MEETING						
01:56	0	0	0	0	N/A	SAFETY MEETING						
02:52	3200	0	0	0	WATER	PRESSURE TEST						
02:59	800	0	6	20	WATER	FRESH WATER SPACER						
03:03	125	0	3.2	69	CMT	BATCH UP, WEIGH AND PUMP 300 SX OF POZ G + 0.3% CD-32 + 0.4% FL-52 + 0.1% SMS + 20 % SILICA FLOUR @ 14.6 PPG						
03:26	85	0	3.2	4	WATER	FRESH WATER DISPLACEMENT SPACER						
03:27	77	0	2.4	71	MUD	MUD DISPLACEMENT						
03:47	0	0	0	0	N/A	FIRST PLUG BALANCED AND SWITCH OVER TO PULL DRILL PIPE						
06:59	391	0	4.8	20	WATER	FRESH WATER SPACER						
07:04	294	0	4.8	79	CMT	BATCH UP, WEIGH AND PUMP 460 SX OF CLASS G + 0.75% CD-32 @ 17.00 PPG						
07:24	280	0	4.8	4	WATER	FRESH WATER DISPLACEMENT SPACER						
07:25	112	0	2.4	40	MUD	MUD DISPLACEMENT						
07:36	0	0	0	0	N/A	SECOND PLUG BALANCED AND JOB DONE						
07:37	0	0	0	0	N/A	PRE-RIG DOWN MEETING						
<b>BUMPED PLUG</b>	<b>PSI TO BUMP PLUG</b>	<b>TEST FLOAT EQUIP.</b>	<b>BBL.CMT RETURNS/ REVERSED</b>	<b>TOTAL BBL. PUMPED</b>	<b>PSI LEFT ON CSG</b>	<b>SPOT TOP OUT CEMENT</b>	<b>SERVICE SUPERVISOR SIGNATURE:</b>					
Y <input checked="" type="checkbox"/> N	0	Y <input checked="" type="checkbox"/> N	0	307	0	Y <input checked="" type="checkbox"/> N						



## C103





## C103

