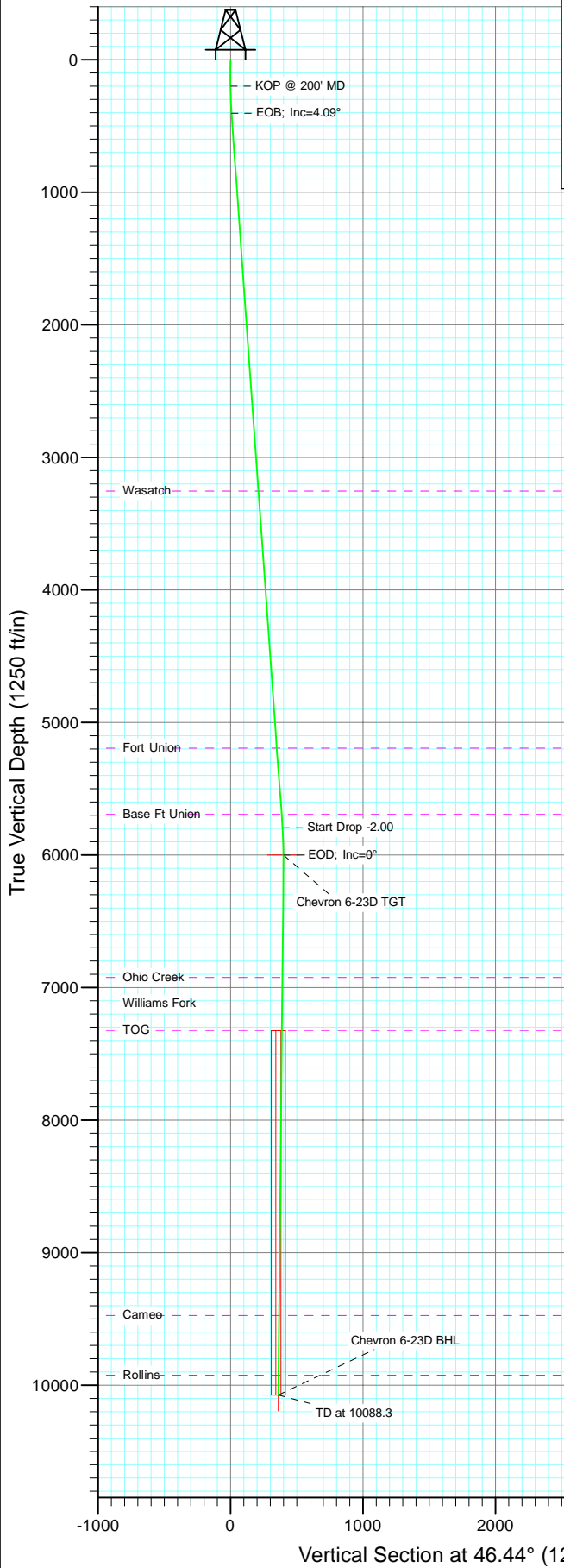
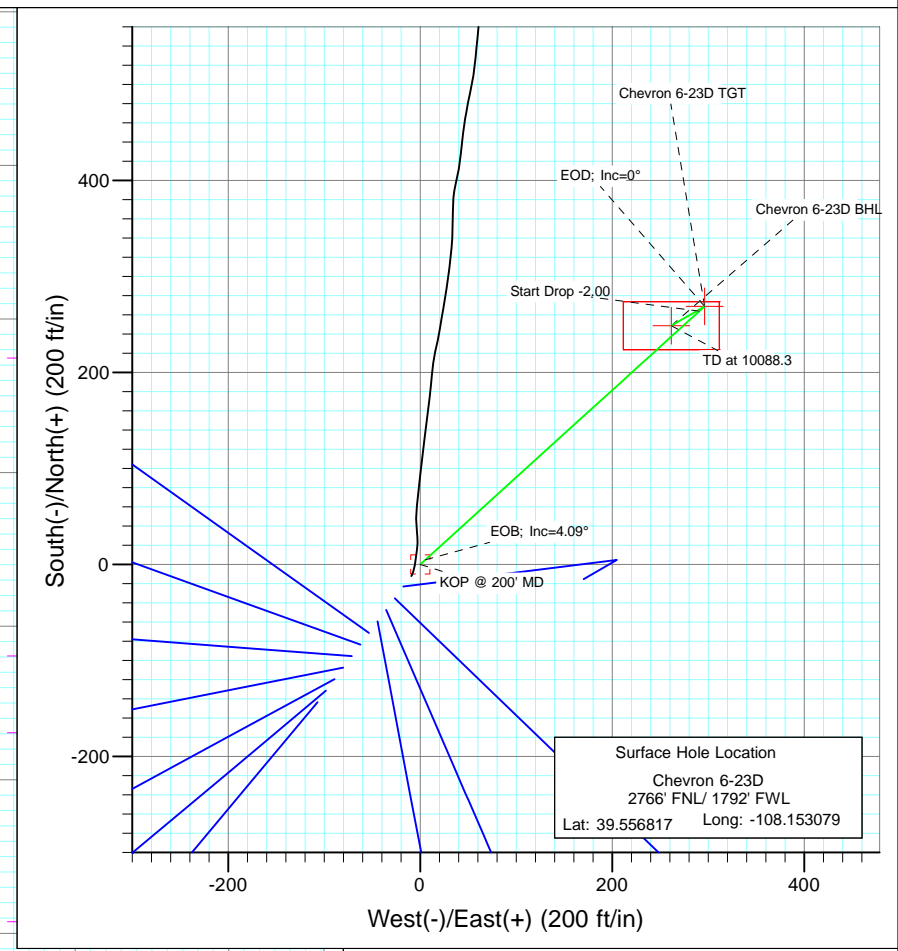




Project: Garfield County
 Site: Sec 6 T6S R96W (F06 696)
 Well: Chevron 6-23D
 Wellbore: DD
 Design: Plan #2



SECTION DETAILS										
Sec	MD	Inc	Azi	TVD	+N/-S	+E/-W	Dleg	TFace	VFace	Target
1	0.0	0.00	0.00	0.0	0.0	0.0	0.00	0.00	0.0	
2	200.0	0.00	0.00	200.0	0.0	0.0	0.00	0.00	0.0	
3	404.5	4.09	47.78	404.3	4.9	5.4	2.00	47.78	7.3	
4	5809.6	4.09	47.78	5795.7	263.9	290.8	0.00	0.00	392.6	
5	6014.1	0.00	0.00	6000.0	268.8	296.2	2.00	180.00	399.9	Chevron 6-23D TGT
6	6245.5	0.58	239.96	6231.4	268.2	295.2	0.25	239.96	398.8	
7	10088.3	0.58	239.96	10074.0	248.8	261.7	0.00	0.00	361.1	Chevron 6-23D BHL



Bottom Hole Location
 Chevron 6-23D
 2525' FNL/ 2053' FWL
 Lat : 39.557500
 Long. : -108.152151

FORMATION TOP DETAILS

TVDPath	MDPath	Formation
3254.0	3261.4	Wasatch
5194.0	5206.4	Fort Union
5694.0	5707.7	Base Ft Union
6924.0	6938.1	Ohio Creek
7124.0	7138.2	Williams Fork
7324.0	7338.2	TOG
9474.0	9488.3	Cameo
9924.0	9938.3	Rollins

DESIGN DETAILS: Plan #2

95XXX; BH
 KBE @ 8244.0ft (Original Well Elev)

Target	Azimuth	Origin	N/S	E/W	From TVD
Chevron 6-23D BHL	46.44	Slot	0.0	0.0	0.0

Cathedral Energy Services

Planning Report

Database:	EDM 5000.1 US Multi Users DB	Local Co-ordinate Reference:	Well Chevron 6-23D
Company:	Berry Petroleum Company (NAD 83)	TVD Reference:	KBE @ 8244.0ft (Original Well Elev)
Project:	Garfield County	MD Reference:	KBE @ 8244.0ft (Original Well Elev)
Site:	Sec 6 T6S R96W (F06 696)	North Reference:	True
Well:	Chevron 6-23D	Survey Calculation Method:	Minimum Curvature
Wellbore:	DD		
Design:	Plan #2		

Project	Garfield County		
Map System:	US State Plane 1983	System Datum:	Mean Sea Level
Geo Datum:	North American Datum 1983		
Map Zone:	Colorado Central Zone		

Site		Sec 6 T6S R96W (F06 696)			
Site Position:		Northing:	1,638,592.01 ft	Latitude:	39.556729
From:	Lat/Long	Easting:	2,252,075.57 ft	Longitude:	-108.153012
Position Uncertainty:	0.0 ft	Slot Radius:	13.200 in	Grid Convergence:	-1.67 °

Well	Chevron 6-23D					
Well Position	+N/-S	0.0 ft	Northing:	1,638,624.59 ft	Latitude:	39.556817
	+E/-W	0.0 ft	Easting:	2,252,057.62 ft	Longitude:	-108.153079
Position Uncertainty		0.0 ft	Wellhead Elevation:	ft	Ground Level:	8,222.0 ft

Wellbore	DD				
Magnetics	Model Name	Sample Date	Declination (°)	Dip Angle (°)	Field Strength (nT)
	IGRF200510	12/2/2009	10.60	65.81	52,427

Design	Plan #2			
Audit Notes:				
Version:	Phase:	PLAN	Tie On Depth:	0.0
Vertical Section:	Depth From (TVD) (ft)	+N/-S (ft)	+E/-W (ft)	Direction (°)
	0.0	0.0	0.0	46.44

Plan Sections										
Measured Depth (ft)	Inclination (°)	Azimuth (°)	Vertical Depth (ft)	+N/-S (ft)	+E/-W (ft)	Dogleg Rate (°/100ft)	Build Rate (°/100ft)	Turn Rate (°/100ft)	TFO (°)	Target
0.0	0.00	0.00	0.0	0.0	0.0	0.00	0.00	0.00	0.00	
200.0	0.00	0.00	200.0	0.0	0.0	0.00	0.00	0.00	0.00	
404.5	4.09	47.78	404.3	4.9	5.4	2.00	2.00	0.00	47.78	
5,809.6	4.09	47.78	5,795.7	263.9	290.8	0.00	0.00	0.00	0.00	
6,014.1	0.00	0.00	6,000.0	268.8	296.2	2.00	-2.00	0.00	180.00	Chevron 6-23D TGT
6,245.5	0.58	239.96	6,231.4	268.2	295.2	0.25	0.25	-51.88	239.96	
10,088.3	0.58	239.96	10,074.0	248.8	261.7	0.00	0.00	0.00	0.00	Chevron 6-23D BHL

Cathedral Energy Services

Planning Report

Database:	EDM 5000.1 US Multi Users DB	Local Co-ordinate Reference:	Well Chevron 6-23D
Company:	Berry Petroleum Company (NAD 83)	TVD Reference:	KBE @ 8244.0ft (Original Well Elev)
Project:	Garfield County	MD Reference:	KBE @ 8244.0ft (Original Well Elev)
Site:	Sec 6 T6S R96W (F06 696)	North Reference:	True
Well:	Chevron 6-23D	Survey Calculation Method:	Minimum Curvature
Wellbore:	DD		
Design:	Plan #2		

Planned Survey

Measured Depth (ft)	Inclination (°)	Azimuth (°)	Vertical Depth (ft)	+N/-S (ft)	+E/-W (ft)	Vertical Section (ft)	Dogleg Rate (°/100ft)	Build Rate (°/100ft)	Comments / Formations
0.0	0.00	0.00	0.0	0.0	0.0	0.0	0.00	0.00	
30.0	0.00	0.00	30.0	0.0	0.0	0.0	0.00	0.00	
60.0	0.00	0.00	60.0	0.0	0.0	0.0	0.00	0.00	
90.0	0.00	0.00	90.0	0.0	0.0	0.0	0.00	0.00	
120.0	0.00	0.00	120.0	0.0	0.0	0.0	0.00	0.00	
150.0	0.00	0.00	150.0	0.0	0.0	0.0	0.00	0.00	
180.0	0.00	0.00	180.0	0.0	0.0	0.0	0.00	0.00	
200.0	0.00	0.00	200.0	0.0	0.0	0.0	0.00	0.00	KOP @ 200' MD
210.0	0.20	47.78	210.0	0.0	0.0	0.0	2.00	2.00	
240.0	0.80	47.78	240.0	0.2	0.2	0.3	2.00	2.00	
270.0	1.40	47.78	270.0	0.6	0.6	0.9	2.00	2.00	
300.0	2.00	47.78	300.0	1.2	1.3	1.7	2.00	2.00	
330.0	2.60	47.78	330.0	2.0	2.2	2.9	2.00	2.00	
360.0	3.20	47.78	359.9	3.0	3.3	4.5	2.00	2.00	
390.0	3.80	47.78	389.9	4.2	4.7	6.3	2.00	2.00	
404.5	4.09	47.78	404.3	4.9	5.4	7.3	2.00	2.00	EOB; Inc=4.09°
420.0	4.09	47.78	419.8	5.6	6.2	8.4	0.00	0.00	
450.0	4.09	47.78	449.7	7.1	7.8	10.5	0.00	0.00	
480.0	4.09	47.78	479.6	8.5	9.4	12.7	0.00	0.00	
510.0	4.09	47.78	509.6	10.0	11.0	14.8	0.00	0.00	
540.0	4.09	47.78	539.5	11.4	12.6	17.0	0.00	0.00	
570.0	4.09	47.78	569.4	12.8	14.1	19.1	0.00	0.00	
600.0	4.09	47.78	599.3	14.3	15.7	21.2	0.00	0.00	
630.0	4.09	47.78	629.3	15.7	17.3	23.4	0.00	0.00	
660.0	4.09	47.78	659.2	17.1	18.9	25.5	0.00	0.00	
690.0	4.09	47.78	689.1	18.6	20.5	27.6	0.00	0.00	
720.0	4.09	47.78	719.0	20.0	22.1	29.8	0.00	0.00	
750.0	4.09	47.78	748.9	21.5	23.6	31.9	0.00	0.00	
780.0	4.09	47.78	778.9	22.9	25.2	34.1	0.00	0.00	
810.0	4.09	47.78	808.8	24.3	26.8	36.2	0.00	0.00	
840.0	4.09	47.78	838.7	25.8	28.4	38.3	0.00	0.00	
870.0	4.09	47.78	868.6	27.2	30.0	40.5	0.00	0.00	
900.0	4.09	47.78	898.6	28.6	31.6	42.6	0.00	0.00	
930.0	4.09	47.78	928.5	30.1	33.2	44.8	0.00	0.00	
960.0	4.09	47.78	958.4	31.5	34.7	46.9	0.00	0.00	
990.0	4.09	47.78	988.3	33.0	36.3	49.0	0.00	0.00	
1,020.0	4.09	47.78	1,018.3	34.4	37.9	51.2	0.00	0.00	
1,050.0	4.09	47.78	1,048.2	35.8	39.5	53.3	0.00	0.00	
1,080.0	4.09	47.78	1,078.1	37.3	41.1	55.5	0.00	0.00	
1,110.0	4.09	47.78	1,108.0	38.7	42.7	57.6	0.00	0.00	
1,140.0	4.09	47.78	1,138.0	40.1	44.2	59.7	0.00	0.00	
1,170.0	4.09	47.78	1,167.9	41.6	45.8	61.9	0.00	0.00	
1,200.0	4.09	47.78	1,197.8	43.0	47.4	64.0	0.00	0.00	
1,230.0	4.09	47.78	1,227.7	44.5	49.0	66.1	0.00	0.00	
1,260.0	4.09	47.78	1,257.6	45.9	50.6	68.3	0.00	0.00	
1,290.0	4.09	47.78	1,287.6	47.3	52.2	70.4	0.00	0.00	
1,320.0	4.09	47.78	1,317.5	48.8	53.8	72.6	0.00	0.00	
1,350.0	4.09	47.78	1,347.4	50.2	55.3	74.7	0.00	0.00	
1,380.0	4.09	47.78	1,377.3	51.6	56.9	76.8	0.00	0.00	
1,410.0	4.09	47.78	1,407.3	53.1	58.5	79.0	0.00	0.00	
1,440.0	4.09	47.78	1,437.2	54.5	60.1	81.1	0.00	0.00	
1,470.0	4.09	47.78	1,467.1	56.0	61.7	83.3	0.00	0.00	

Cathedral Energy Services

Planning Report

Database:	EDM 5000.1 US Multi Users DB	Local Co-ordinate Reference:	Well Chevron 6-23D
Company:	Berry Petroleum Company (NAD 83)	TVD Reference:	KBE @ 8244.0ft (Original Well Elev)
Project:	Garfield County	MD Reference:	KBE @ 8244.0ft (Original Well Elev)
Site:	Sec 6 T6S R96W (F06 696)	North Reference:	True
Well:	Chevron 6-23D	Survey Calculation Method:	Minimum Curvature
Wellbore:	DD		
Design:	Plan #2		

Planned Survey

Measured Depth (ft)	Inclination (°)	Azimuth (°)	Vertical Depth (ft)	+N/-S (ft)	+E/-W (ft)	Vertical Section (ft)	Dogleg Rate (°/100ft)	Build Rate (°/100ft)	Comments / Formations
1,500.0	4.09	47.78	1,497.0	57.4	63.3	85.4	0.00	0.00	
1,530.0	4.09	47.78	1,527.0	58.8	64.8	87.5	0.00	0.00	
1,560.0	4.09	47.78	1,556.9	60.3	66.4	89.7	0.00	0.00	
1,590.0	4.09	47.78	1,586.8	61.7	68.0	91.8	0.00	0.00	
1,620.0	4.09	47.78	1,616.7	63.1	69.6	93.9	0.00	0.00	
1,650.0	4.09	47.78	1,646.7	64.6	71.2	96.1	0.00	0.00	
1,680.0	4.09	47.78	1,676.6	66.0	72.8	98.2	0.00	0.00	
1,710.0	4.09	47.78	1,706.5	67.5	74.3	100.4	0.00	0.00	
1,740.0	4.09	47.78	1,736.4	68.9	75.9	102.5	0.00	0.00	
1,770.0	4.09	47.78	1,766.4	70.3	77.5	104.6	0.00	0.00	
1,800.0	4.09	47.78	1,796.3	71.8	79.1	106.8	0.00	0.00	
1,830.0	4.09	47.78	1,826.2	73.2	80.7	108.9	0.00	0.00	
1,860.0	4.09	47.78	1,856.1	74.6	82.3	111.1	0.00	0.00	
1,890.0	4.09	47.78	1,886.0	76.1	83.9	113.2	0.00	0.00	
1,920.0	4.09	47.78	1,916.0	77.5	85.4	115.3	0.00	0.00	
1,950.0	4.09	47.78	1,945.9	79.0	87.0	117.5	0.00	0.00	
1,980.0	4.09	47.78	1,975.8	80.4	88.6	119.6	0.00	0.00	
2,010.0	4.09	47.78	2,005.7	81.8	90.2	121.7	0.00	0.00	
2,040.0	4.09	47.78	2,035.7	83.3	91.8	123.9	0.00	0.00	
2,070.0	4.09	47.78	2,065.6	84.7	93.4	126.0	0.00	0.00	
2,100.0	4.09	47.78	2,095.5	86.1	94.9	128.2	0.00	0.00	
2,130.0	4.09	47.78	2,125.4	87.6	96.5	130.3	0.00	0.00	
2,160.0	4.09	47.78	2,155.4	89.0	98.1	132.4	0.00	0.00	
2,190.0	4.09	47.78	2,185.3	90.5	99.7	134.6	0.00	0.00	
2,220.0	4.09	47.78	2,215.2	91.9	101.3	136.7	0.00	0.00	
2,250.0	4.09	47.78	2,245.1	93.3	102.9	138.9	0.00	0.00	
2,280.0	4.09	47.78	2,275.1	94.8	104.4	141.0	0.00	0.00	
2,310.0	4.09	47.78	2,305.0	96.2	106.0	143.1	0.00	0.00	
2,340.0	4.09	47.78	2,334.9	97.6	107.6	145.3	0.00	0.00	
2,370.0	4.09	47.78	2,364.8	99.1	109.2	147.4	0.00	0.00	
2,400.0	4.09	47.78	2,394.7	100.5	110.8	149.6	0.00	0.00	
2,430.0	4.09	47.78	2,424.7	102.0	112.4	151.7	0.00	0.00	
2,460.0	4.09	47.78	2,454.6	103.4	114.0	153.8	0.00	0.00	
2,490.0	4.09	47.78	2,484.5	104.8	115.5	156.0	0.00	0.00	

Targets

Target Name	Dip Angle (°)	Dip Dir. (°)	TVD (ft)	+N/-S (ft)	+E/-W (ft)	Northing (ft)	Easting (ft)	Latitude	Longitude
- hit/miss target									
- Shape									
Chevron 6-23D TGT	0.00	0.00	6,000.0	268.8	296.2	1,638,884.62	2,252,361.59	39.557555	-108.152028
- plan misses target center by 3523.9ft at 2490.0ft MD (2484.5 TVD, 104.8 N, 115.5 E)									
- Point									
Chevron 6-23D BHL	0.00	0.00	10,074.0	248.8	261.7	1,638,865.63	2,252,326.43	39.557500	-108.152151
- plan misses target center by 7592.3ft at 2490.0ft MD (2484.5 TVD, 104.8 N, 115.5 E)									
- Rectangle (sides W50.0 H100.0 D0.0)									

Cathedral Energy Services

Planning Report

Database:	EDM 5000.1 US Multi Users DB	Local Co-ordinate Reference:	Well Chevron 6-23D
Company:	Berry Petroleum Company (NAD 83)	TVD Reference:	KBE @ 8244.0ft (Original Well Elev)
Project:	Garfield County	MD Reference:	KBE @ 8244.0ft (Original Well Elev)
Site:	Sec 6 T6S R96W (F06 696)	North Reference:	True
Well:	Chevron 6-23D	Survey Calculation Method:	Minimum Curvature
Wellbore:	DD		
Design:	Plan #2		

Planned Survey									
Measured Depth (ft)	Inclination (°)	Azimuth (°)	Vertical Depth (ft)	+N/-S (ft)	+E/-W (ft)	Vertical Section (ft)	Dogleg Rate (°/100ft)	Build Rate (°/100ft)	Comments / Formations
2,500.0	4.09	47.78	2,494.5	105.3	116.1	156.7	0.00	0.00	
2,600.0	4.09	47.78	2,594.2	110.1	121.3	163.8	0.00	0.00	
2,700.0	4.09	47.78	2,694.0	114.9	126.6	170.9	0.00	0.00	
2,800.0	4.09	47.78	2,793.7	119.7	131.9	178.1	0.00	0.00	
2,900.0	4.09	47.78	2,893.5	124.5	137.2	185.2	0.00	0.00	
3,000.0	4.09	47.78	2,993.2	129.3	142.5	192.3	0.00	0.00	
3,100.0	4.09	47.78	3,093.0	134.1	147.8	199.5	0.00	0.00	
3,200.0	4.09	47.78	3,192.7	138.9	153.0	206.6	0.00	0.00	
3,261.4	4.09	47.78	3,254.0	141.8	156.3	211.0	0.00	0.00	Wasatch
3,300.0	4.09	47.78	3,292.5	143.6	158.3	213.7	0.00	0.00	
3,400.0	4.09	47.78	3,392.2	148.4	163.6	220.8	0.00	0.00	
3,500.0	4.09	47.78	3,491.9	153.2	168.9	228.0	0.00	0.00	
3,600.0	4.09	47.78	3,591.7	158.0	174.2	235.1	0.00	0.00	
3,700.0	4.09	47.78	3,691.4	162.8	179.4	242.2	0.00	0.00	
3,800.0	4.09	47.78	3,791.2	167.6	184.7	249.4	0.00	0.00	
3,900.0	4.09	47.78	3,890.9	172.4	190.0	256.5	0.00	0.00	
4,000.0	4.09	47.78	3,990.7	177.2	195.3	263.6	0.00	0.00	
4,100.0	4.09	47.78	4,090.4	182.0	200.6	270.7	0.00	0.00	
4,200.0	4.09	47.78	4,190.2	186.8	205.8	277.9	0.00	0.00	
4,300.0	4.09	47.78	4,289.9	191.6	211.1	285.0	0.00	0.00	
4,400.0	4.09	47.78	4,389.7	196.4	216.4	292.1	0.00	0.00	
4,500.0	4.09	47.78	4,489.4	201.1	221.7	299.3	0.00	0.00	
4,600.0	4.09	47.78	4,589.1	205.9	227.0	306.4	0.00	0.00	
4,700.0	4.09	47.78	4,688.9	210.7	232.2	313.5	0.00	0.00	
4,800.0	4.09	47.78	4,788.6	215.5	237.5	320.6	0.00	0.00	
4,900.0	4.09	47.78	4,888.4	220.3	242.8	327.8	0.00	0.00	
5,000.0	4.09	47.78	4,988.1	225.1	248.1	334.9	0.00	0.00	
5,100.0	4.09	47.78	5,087.9	229.9	253.4	342.0	0.00	0.00	
5,200.0	4.09	47.78	5,187.6	234.7	258.7	349.2	0.00	0.00	
5,206.4	4.09	47.78	5,194.0	235.0	259.0	349.6	0.00	0.00	Fort Union
5,300.0	4.09	47.78	5,287.4	239.5	263.9	356.3	0.00	0.00	
5,400.0	4.09	47.78	5,387.1	244.3	269.2	363.4	0.00	0.00	
5,500.0	4.09	47.78	5,486.9	249.1	274.5	370.6	0.00	0.00	
5,600.0	4.09	47.78	5,586.6	253.9	279.8	377.7	0.00	0.00	
5,700.0	4.09	47.78	5,686.3	258.6	285.1	384.8	0.00	0.00	
5,707.7	4.09	47.78	5,694.0	259.0	285.5	385.4	0.00	0.00	Base Ft Union
5,800.0	4.09	47.78	5,786.1	263.4	290.3	391.9	0.00	0.00	
5,809.6	4.09	47.78	5,795.7	263.9	290.8	392.6	0.00	0.00	Start Drop -2.00
5,900.0	2.28	47.78	5,885.9	267.3	294.6	397.6	2.00	-2.00	
6,000.0	0.28	47.78	5,985.9	268.8	296.2	399.9	2.00	-2.00	
6,014.1	0.00	0.00	6,000.0	268.8	296.2	399.9	2.00	-2.00	EOD; Inc=0° - Chevron 6-23D TGT
6,100.0	0.21	239.96	6,085.9	268.7	296.1	399.8	0.25	0.25	
6,200.0	0.46	239.96	6,185.9	268.4	295.6	399.2	0.25	0.25	
6,245.5	0.58	239.96	6,231.4	268.2	295.2	398.8	0.25	0.25	
6,300.0	0.58	239.96	6,285.9	267.9	294.8	398.2	0.00	0.00	
6,400.0	0.58	239.96	6,385.9	267.4	293.9	397.3	0.00	0.00	
6,500.0	0.58	239.96	6,485.9	266.9	293.0	396.3	0.00	0.00	
6,600.0	0.58	239.96	6,585.9	266.4	292.1	395.3	0.00	0.00	
6,700.0	0.58	239.96	6,685.9	265.9	291.3	394.3	0.00	0.00	
6,800.0	0.58	239.96	6,785.9	265.4	290.4	393.3	0.00	0.00	
6,900.0	0.58	239.96	6,885.9	264.9	289.5	392.4	0.00	0.00	
6,938.1	0.58	239.96	6,924.0	264.7	289.2	392.0	0.00	0.00	Ohio Creek

Cathedral Energy Services

Planning Report

Database:	EDM 5000.1 US Multi Users DB	Local Co-ordinate Reference:	Well Chevron 6-23D
Company:	Berry Petroleum Company (NAD 83)	TVD Reference:	KBE @ 8244.0ft (Original Well Elev)
Project:	Garfield County	MD Reference:	KBE @ 8244.0ft (Original Well Elev)
Site:	Sec 6 T6S R96W (F06 696)	North Reference:	True
Well:	Chevron 6-23D	Survey Calculation Method:	Minimum Curvature
Wellbore:	DD		
Design:	Plan #2		

Planned Survey

Measured Depth (ft)	Inclination (°)	Azimuth (°)	Vertical Depth (ft)	+N/-S (ft)	+E/-W (ft)	Vertical Section (ft)	Dogleg Rate (°/100ft)	Build Rate (°/100ft)	Comments / Formations
7,000.0	0.58	239.96	6,985.9	264.4	288.6	391.4	0.00	0.00	
7,100.0	0.58	239.96	7,085.8	263.9	287.8	390.4	0.00	0.00	
7,138.2	0.58	239.96	7,124.0	263.7	287.4	390.0	0.00	0.00	Williams Fork
7,200.0	0.58	239.96	7,185.8	263.4	286.9	389.4	0.00	0.00	
7,300.0	0.58	239.96	7,285.8	262.9	286.0	388.4	0.00	0.00	
7,338.2	0.58	239.96	7,324.0	262.7	285.7	388.1	0.00	0.00	TOG
7,400.0	0.58	239.96	7,385.8	262.4	285.1	387.4	0.00	0.00	
7,500.0	0.58	239.96	7,485.8	261.9	284.3	386.5	0.00	0.00	
7,600.0	0.58	239.96	7,585.8	261.4	283.4	385.5	0.00	0.00	
7,700.0	0.58	239.96	7,685.8	260.9	282.5	384.5	0.00	0.00	
7,800.0	0.58	239.96	7,785.8	260.4	281.7	383.5	0.00	0.00	
7,900.0	0.58	239.96	7,885.8	259.9	280.8	382.5	0.00	0.00	
8,000.0	0.58	239.96	7,985.8	259.4	279.9	381.6	0.00	0.00	
8,100.0	0.58	239.96	8,085.8	258.8	279.0	380.6	0.00	0.00	
8,200.0	0.58	239.96	8,185.8	258.3	278.2	379.6	0.00	0.00	
8,300.0	0.58	239.96	8,285.8	257.8	277.3	378.6	0.00	0.00	
8,400.0	0.58	239.96	8,385.8	257.3	276.4	377.6	0.00	0.00	
8,500.0	0.58	239.96	8,485.8	256.8	275.5	376.6	0.00	0.00	
8,600.0	0.58	239.96	8,585.8	256.3	274.7	375.7	0.00	0.00	
8,700.0	0.58	239.96	8,685.8	255.8	273.8	374.7	0.00	0.00	
8,800.0	0.58	239.96	8,785.8	255.3	272.9	373.7	0.00	0.00	
8,900.0	0.58	239.96	8,885.8	254.8	272.0	372.7	0.00	0.00	
9,000.0	0.58	239.96	8,985.7	254.3	271.2	371.7	0.00	0.00	
9,100.0	0.58	239.96	9,085.7	253.8	270.3	370.8	0.00	0.00	
9,200.0	0.58	239.96	9,185.7	253.3	269.4	369.8	0.00	0.00	
9,300.0	0.58	239.96	9,285.7	252.8	268.5	368.8	0.00	0.00	
9,400.0	0.58	239.96	9,385.7	252.3	267.7	367.8	0.00	0.00	
9,488.3	0.58	239.96	9,474.0	251.8	266.9	366.9	0.00	0.00	Cameo
9,500.0	0.58	239.96	9,485.7	251.8	266.8	366.8	0.00	0.00	
9,600.0	0.58	239.96	9,585.7	251.3	265.9	365.8	0.00	0.00	
9,700.0	0.58	239.96	9,685.7	250.8	265.0	364.9	0.00	0.00	
9,800.0	0.58	239.96	9,785.7	250.3	264.2	363.9	0.00	0.00	
9,900.0	0.58	239.96	9,885.7	249.7	263.3	362.9	0.00	0.00	
9,938.3	0.58	239.96	9,924.0	249.6	263.0	362.5	0.00	0.00	Rollins
10,000.0	0.58	239.96	9,985.7	249.2	262.4	361.9	0.00	0.00	
10,088.3	0.58	239.96	10,074.0	248.8	261.7	361.1	0.00	0.00	TD at 10088.3 - Chevron 6-23D BHL

Targets

Target Name	Dip Angle (°)	Dip Dir. (°)	TVD (ft)	+N/-S (ft)	+E/-W (ft)	Northing (ft)	Easting (ft)	Latitude	Longitude
- hit/miss target									
- Shape									
Chevron 6-23D TGT	0.00	0.00	6,000.0	268.8	296.2	1,638,884.62	2,252,361.59	39.557555	-108.152028
- plan hits target center									
- Point									
Chevron 6-23D BHL	0.00	0.00	10,074.0	248.8	261.7	1,638,865.63	2,252,326.43	39.557500	-108.152151
- plan hits target center									
- Rectangle (sides W50.0 H100.0 D0.0)									

Cathedral Energy Services

Planning Report

Database:	EDM 5000.1 US Multi Users DB	Local Co-ordinate Reference:	Well Chevron 6-23D
Company:	Berry Petroleum Company (NAD 83)	TVD Reference:	KBE @ 8244.0ft (Original Well Elev)
Project:	Garfield County	MD Reference:	KBE @ 8244.0ft (Original Well Elev)
Site:	Sec 6 T6S R96W (F06 696)	North Reference:	True
Well:	Chevron 6-23D	Survey Calculation Method:	Minimum Curvature
Wellbore:	DD		
Design:	Plan #2		

Formations						
Measured Depth (ft)	Vertical Depth (ft)	Name	Lithology	Dip (°)	Dip Direction (°)	
3,261.4	3,254.0	Wasatch		0.00		
5,206.4	5,194.0	Fort Union		0.00		
5,707.7	5,694.0	Base Ft Union		0.00		
6,938.1	6,924.0	Ohio Creek		0.00		
7,138.2	7,124.0	Williams Fork		0.00		
7,338.2	7,324.0	TOG		0.00		
9,488.3	9,474.0	Cameo		0.00		
9,938.3	9,924.0	Rollins		0.00		

Plan Annotations					
Measured Depth (ft)	Vertical Depth (ft)	Local Coordinates			
		+N/-S (ft)	+E/-W (ft)	Comment	
200.0	200.0	0.0	0.0	KOP @ 200' MD	
404.5	404.3	4.9	5.4	EOB; Inc=4.09°	
5,809.6	5,795.7	263.9	290.8	Start Drop -2.00	
6,014.1	6,000.0	268.8	296.2	EOD; Inc=0°	
10,088.3	10,074.0	268.2	295.2	TD at 10088.3	

Berry Petroleum Company (NAD 83)

Garfield County

Sec 6 T6S R96W (F06 696)

Chevron 6-23D

DD

Plan #2

Anticollision Report

17 November, 2010

Cathedral Energy Services

Anticollision Report

Company:	Berry Petroleum Company (NAD 83)	Local Co-ordinate Reference:	Well Chevron 6-23D
Project:	Garfield County	TVD Reference:	KBE @ 8244.0ft (Original Well Elev)
Reference Site:	Sec 6 T6S R96W (F06 696)	MD Reference:	KBE @ 8244.0ft (Original Well Elev)
Site Error:	0.0ft	North Reference:	True
Reference Well:	Chevron 6-23D	Survey Calculation Method:	Minimum Curvature
Well Error:	0.0ft	Output errors are at	2.00 sigma
Reference Wellbore	DD	Database:	EDM 5000.1 US Multi Users DB
Reference Design:	Plan #2	Offset TVD Reference:	Offset Datum

Reference	Plan #2		
Filter type:	NO GLOBAL FILTER: Using user defined selection & filtering criteria		
Interpolation Method:	MD Interval 100.0ft	Error Model:	Systematic Ellipse
Depth Range:	Unlimited	Scan Method:	Closest Approach 3D
Results Limited by:	Maximum center-center distance of 1,221.6ft	Error Surface:	Elliptical Conic
Warning Levels Evaluated at:	2.00 Sigma		

Survey Tool Program		Date	11/17/2010		
From (ft)	To (ft)	Survey (Wellbore)	Tool Name	Description	
0.0	10,088.3	Plan #2 (DD)	MWD	Geolink MWD	

Summary						
Site Name	Reference Measured Depth (ft)	Offset Measured Depth (ft)	Distance Between Centres (ft)	Distance Between Ellipses (ft)	Separation Factor	Warning
Offset Well - Wellbore - Design						
Chevron C06 696 (NWNW S6-T6S-R96W)						
Chevron 6-24D - DD - Plan #1	7,451.1	7,474.1	327.0	299.4	11.846	CC
Chevron 6-24D - DD - Plan #1	10,088.3	10,110.5	334.0	298.1	9.286	ES, SF
Chevron 6-26D - DD - Plan #1	7,483.6	7,404.5	975.7	948.2	35.513	CC
Chevron 6-26D - DD - Plan #1	7,500.0	7,418.6	975.8	948.2	35.450	ES
Chevron 6-26D - DD - Plan #1	10,088.3	10,004.6	988.1	952.0	27.368	SF
Sec 6 T6S R96W (F06 696)						
Chevron 6-19D - DD - Plan #2	200.0	200.0	59.0	58.4	94.997	CC, ES
Chevron 6-19D - DD - Plan #2	10,088.3	10,061.3	921.8	885.5	25.454	SF
Chevron 6-20D - DD - Plan #2	200.0	200.0	44.0	43.4	70.808	CC, ES
Chevron 6-20D - DD - Plan #2	10,088.3	10,055.3	575.7	539.5	15.911	SF
Chevron 6-21D - DD - Plan #2	200.0	200.0	74.1	73.4	119.186	CC, ES
Chevron 6-21D - DD - Plan #2	6,700.0	6,583.7	1,217.8	1,192.8	48.861	SF
Chevron 6-22D - DD - Plan #3	200.0	200.0	28.8	28.2	46.423	CC, ES
Chevron 6-22D - DD - Plan #3	10,055.6	10,051.2	279.6	244.1	7.874	SF
Chevron 6-25D - DD - DD	318.1	318.6	11.3	10.2	10.833	CC, ES
Chevron 6-25D - DD - DD	500.0	500.7	14.3	12.4	7.794	SF
Chevron 6-32D - DD - Plan #2	200.0	200.0	178.9	178.3	287.968	CC, ES
Chevron 6-32D - DD - Plan #2	3,900.0	3,695.1	1,201.3	1,188.2	91.811	SF
Chevron 6-33D - DD - Plan #2	200.0	200.0	164.1	163.4	264.050	CC, ES
Chevron 6-33D - DD - Plan #2	4,400.0	4,219.7	1,206.0	1,191.1	81.084	SF
Chevron 6-34D - DD - Plan #2	200.0	200.0	149.0	148.4	239.861	CC, ES
Chevron 6-34D - DD - Plan #2	1,000.0	964.2	236.1	232.7	70.060	SF
Chevron 6-35D - DD - Plan #2	200.0	200.0	134.0	133.4	215.672	CC, ES
Chevron 6-35D - DD - Plan #2	5,200.0	5,053.0	1,205.7	1,187.3	65.453	SF
Chevron 6-36D - DD - Plan #2	200.0	200.0	119.0	118.4	191.483	CC, ES
Chevron 6-36D - DD - Plan #2	5,600.0	5,467.8	1,202.4	1,181.8	58.282	SF
Chevron 6-37D - DD - Plan #2	200.0	200.0	103.9	103.3	167.294	CC, ES
Chevron 6-37D - DD - Plan #2	1,400.0	1,370.8	273.1	267.7	51.037	SF
Chevron 6-38D - DD - Plan #2	200.0	200.0	89.1	88.5	143.376	CC, ES
Chevron 6-38D - DD - Plan #2	1,200.0	1,181.1	213.0	208.2	44.181	SF
Section 6 T6S R96W						
Chevron 6-26D - DD - Plan #1	6,646.6	6,624.6	672.3	647.2	26.828	CC, ES
Chevron 6-26D - DD - Plan #1	7,500.0	7,424.9	706.3	678.6	25.495	SF

CC - Min centre to center distance or convergent point, SF - min separation factor, ES - min ellipse separation

Cathedral Energy Services

Anticollision Report

Company:	Berry Petroleum Company (NAD 83)	Local Co-ordinate Reference:	Well Chevron 6-23D
Project:	Garfield County	TVD Reference:	KBE @ 8244.0ft (Original Well Elev)
Reference Site:	Sec 6 T6S R96W (F06 696)	MD Reference:	KBE @ 8244.0ft (Original Well Elev)
Site Error:	0.0ft	North Reference:	True
Reference Well:	Chevron 6-23D	Survey Calculation Method:	Minimum Curvature
Well Error:	0.0ft	Output errors are at	2.00 sigma
Reference Wellbore	DD	Database:	EDM 5000.1 US Multi Users DB
Reference Design:	Plan #2	Offset TVD Reference:	Offset Datum

Offset Design												Chevron C06 696 (NWNW S6-T6S-R96W) - Chevron 6-24D - DD - Plan #1		Offset Site Error:		0.0 ft
Survey Program: 0-MWD														Offset Well Error:		0.0 ft
Reference		Offset		Semi Major Axis			Distance									
Measured Depth (ft)	Vertical Depth (ft)	Measured Depth (ft)	Vertical Depth (ft)	Reference (ft)	Offset (ft)	Highside Toolface (°)	Offset Wellbore Centre +N/-S (ft)	+E/-W (ft)	Between Centres (ft)	Between Ellipses (ft)	Total Uncertainty Axis	Separation Factor	Warning			
3,300.0	3,292.5	3,499.8	3,439.9	6.9	12.2	-53.16	1,322.0	63.1	1,207.8	1,195.3	12.53	96.422				
3,400.0	3,392.2	3,596.7	3,534.7	7.1	12.6	-53.35	1,302.4	66.4	1,183.1	1,170.2	12.89	91.752				
3,500.0	3,491.9	3,693.5	3,629.4	7.3	13.0	-53.56	1,282.7	69.7	1,158.4	1,145.2	13.26	87.342				
3,600.0	3,591.7	3,790.3	3,724.2	7.5	13.4	-53.77	1,263.1	73.0	1,133.8	1,120.1	13.63	83.170				
3,700.0	3,691.4	3,887.1	3,818.9	7.7	13.8	-54.00	1,243.5	76.3	1,109.1	1,095.1	14.00	79.217				
3,800.0	3,791.2	3,984.0	3,913.7	7.9	14.1	-54.23	1,223.8	79.6	1,084.5	1,070.1	14.37	75.467				
3,900.0	3,890.9	4,080.8	4,008.4	8.2	14.5	-54.47	1,204.2	82.9	1,059.9	1,045.2	14.74	71.905				
4,000.0	3,990.7	4,177.6	4,103.2	8.4	14.9	-54.73	1,184.6	86.2	1,035.3	1,020.2	15.11	68.516				
4,100.0	4,090.4	4,274.4	4,197.9	8.6	15.3	-55.00	1,164.9	89.5	1,010.7	995.3	15.48	65.287				
4,200.0	4,190.2	4,371.2	4,292.7	8.8	15.7	-55.28	1,145.3	92.8	986.2	970.3	15.85	62.209				
4,300.0	4,289.9	4,468.1	4,387.5	9.0	16.1	-55.58	1,125.7	96.1	961.7	945.4	16.23	59.269				
4,400.0	4,389.7	4,564.9	4,482.2	9.2	16.5	-55.89	1,106.0	99.4	937.2	920.6	16.60	56.460				
4,500.0	4,489.4	4,661.7	4,577.0	9.4	16.8	-56.21	1,086.4	102.8	912.7	895.7	16.97	53.771				
4,600.0	4,589.1	4,758.5	4,671.7	9.7	17.2	-56.56	1,066.8	106.1	888.2	870.9	17.35	51.197				
4,700.0	4,688.9	4,855.4	4,766.5	9.9	17.6	-56.93	1,047.1	109.4	863.8	846.1	17.73	48.728				
4,800.0	4,788.6	4,952.2	4,861.2	10.1	18.0	-57.31	1,027.5	112.7	839.5	821.4	18.11	46.359				
4,900.0	4,888.4	5,049.0	4,956.0	10.3	18.4	-57.72	1,007.9	116.0	815.1	796.6	18.49	44.084				
5,000.0	4,988.1	5,145.8	5,050.7	10.5	18.8	-58.16	988.2	119.3	790.8	772.0	18.88	41.896				
5,100.0	5,087.9	5,242.6	5,145.5	10.7	19.2	-58.62	968.6	122.6	766.6	747.3	19.27	39.791				
5,200.0	5,187.6	5,339.5	5,240.2	10.9	19.6	-59.11	949.0	125.9	742.4	722.7	19.66	37.764				
5,300.0	5,287.4	5,436.3	5,335.0	11.2	19.9	-59.64	929.4	129.2	718.2	698.2	20.06	35.810				
5,400.0	5,387.1	5,533.1	5,429.7	11.4	20.3	-60.20	909.7	132.5	694.2	673.7	20.46	33.926				
5,500.0	5,486.9	5,629.9	5,524.5	11.6	20.7	-60.80	890.1	135.8	670.1	649.3	20.87	32.107				
5,600.0	5,586.6	5,726.8	5,619.3	11.8	21.1	-61.45	870.5	139.1	646.2	624.9	21.29	30.350				
5,700.0	5,686.3	5,823.6	5,714.0	12.0	21.5	-62.14	850.8	142.4	622.3	600.6	21.72	28.651				
5,800.0	5,786.1	5,920.4	5,808.8	12.2	21.9	-62.89	831.2	145.7	598.6	576.4	22.16	27.008				
5,900.0	5,885.9	6,017.5	5,903.8	12.4	22.3	-63.20	811.5	149.0	575.5	553.0	22.56	25.508				
6,000.0	5,985.9	6,115.1	5,999.3	12.6	22.6	-63.21	791.7	152.4	554.1	531.2	22.91	24.187				
6,100.0	6,085.9	6,212.9	6,095.0	12.7	23.0	104.50	771.9	155.7	533.7	510.4	23.24	22.959				
6,200.0	6,185.9	6,310.8	6,190.9	12.8	23.4	104.37	752.0	159.1	513.4	489.8	23.57	21.776				
6,300.0	6,285.9	6,408.8	6,286.7	13.0	23.8	104.25	732.2	162.4	493.1	469.2	23.90	20.630				
6,400.0	6,385.9	6,506.7	6,382.5	13.1	24.2	104.09	712.3	165.7	472.9	448.7	24.24	19.513				
6,500.0	6,485.9	6,604.6	6,478.4	13.3	24.6	103.92	692.5	169.1	452.8	428.2	24.57	18.425				
6,600.0	6,585.9	6,702.6	6,574.2	13.4	25.0	103.74	672.6	172.4	432.6	407.7	24.91	17.363				
6,700.0	6,685.9	6,800.5	6,670.0	13.5	25.4	103.54	652.8	175.8	412.4	387.1	25.26	16.329				
6,800.0	6,785.9	6,897.1	6,764.6	13.7	25.8	103.32	633.2	179.1	392.2	366.6	25.60	15.322				
6,900.0	6,885.9	6,983.9	6,849.8	13.8	26.1	103.13	617.1	181.8	373.9	347.9	25.92	14.423				
7,000.0	6,985.9	7,071.6	6,936.4	14.0	26.3	102.99	603.5	184.1	358.5	332.2	26.24	13.661				
7,100.0	7,085.8	7,160.0	7,024.1	14.1	26.5	102.88	592.5	185.9	346.1	319.5	26.56	13.033				
7,200.0	7,185.8	7,249.1	7,112.8	14.3	26.7	102.84	584.0	187.4	336.8	309.9	26.86	12.537				
7,300.0	7,285.8	7,338.5	7,202.1	14.4	26.9	102.86	578.3	188.3	330.6	303.4	27.17	12.168				
7,400.0	7,385.8	7,428.3	7,291.8	14.5	27.0	102.94	575.3	188.8	327.4	300.0	27.46	11.924				
7,451.1	7,436.9	7,474.1	7,337.6	14.6	27.0	103.01	574.8	188.9	327.0	299.4	27.61	11.846 CC				
7,500.0	7,485.8	7,522.4	7,385.8	14.7	27.0	103.09	574.8	188.9	327.1	299.4	27.75	11.787				
7,600.0	7,585.8	7,622.4	7,485.8	14.8	27.1	103.27	574.8	188.9	327.4	299.3	28.06	11.668				
7,700.0	7,685.8	7,722.3	7,585.8	15.0	27.2	103.44	574.8	188.9	327.6	299.2	28.36	11.551				
7,800.0	7,785.8	7,822.3	7,685.8	15.1	27.3	103.61	574.8	188.9	327.8	299.2	28.67	11.436				
7,900.0	7,885.8	7,922.3	7,785.8	15.3	27.4	103.78	574.8	188.9	328.1	299.1	28.97	11.323				
8,000.0	7,985.8	8,022.3	7,885.8	15.4	27.5	103.95	574.8	188.9	328.3	299.0	29.28	11.212				
8,100.0	8,085.8	8,122.3	7,985.8	15.6	27.6	104.12	574.8	188.9	328.6	299.0	29.59	11.103				
8,200.0	8,185.8	8,222.3	8,085.8	15.7	27.7	104.29	574.8	188.9	328.8	298.9	29.90	10.996				

CC - Min centre to center distance or convergent point, SF - min separation factor, ES - min ellipse separation

Cathedral Energy Services

Anticollision Report

Company:	Berry Petroleum Company (NAD 83)	Local Co-ordinate Reference:	Well Chevron 6-23D
Project:	Garfield County	TVD Reference:	KBE @ 8244.0ft (Original Well Elev)
Reference Site:	Sec 6 T6S R96W (F06 696)	MD Reference:	KBE @ 8244.0ft (Original Well Elev)
Site Error:	0.0ft	North Reference:	True
Reference Well:	Chevron 6-23D	Survey Calculation Method:	Minimum Curvature
Well Error:	0.0ft	Output errors are at	2.00 sigma
Reference Wellbore	DD	Database:	EDM 5000.1 US Multi Users DB
Reference Design:	Plan #2	Offset TVD Reference:	Offset Datum

Offset Design Chevron C06 696 (NWNW S6-T6S-R96W) - Chevron 6-24D - DD - Plan #1													Offset Site Error:	0.0 ft
Survey Program: 0-MWD													Offset Well Error:	0.0 ft
Reference		Offset		Semi Major Axis			Distance				Total		Warning	
Measured Depth (ft)	Vertical Depth (ft)	Measured Depth (ft)	Vertical Depth (ft)	Reference (ft)	Offset (ft)	Highside Toolface (°)	Offset Wellbore Centre +N/-S (ft)	+E/-W (ft)	Between Centres (ft)	Between Ellipses (ft)	Uncertainty Axis	Separation Factor		
8,300.0	8,285.8	8,322.3	8,185.8	15.9	27.7	104.46	574.8	188.9	329.1	298.8	30.22	10.890		
8,400.0	8,385.8	8,422.3	8,285.8	16.0	27.8	104.63	574.8	188.9	329.3	298.8	30.53	10.787		
8,500.0	8,485.8	8,522.3	8,385.8	16.2	27.9	104.80	574.8	188.9	329.6	298.7	30.84	10.685		
8,600.0	8,585.8	8,622.3	8,485.8	16.3	28.0	104.97	574.8	188.9	329.8	298.7	31.16	10.585		
8,700.0	8,685.8	8,722.3	8,585.8	16.5	28.1	105.14	574.8	188.9	330.1	298.6	31.48	10.487		
8,800.0	8,785.8	8,822.3	8,685.8	16.7	28.2	105.31	574.8	188.9	330.3	298.6	31.79	10.390		
8,900.0	8,885.8	8,922.3	8,785.8	16.8	28.3	105.48	574.8	188.9	330.6	298.5	32.11	10.296		
9,000.0	8,985.7	9,022.3	8,885.7	17.0	28.4	105.65	574.8	188.9	330.9	298.5	32.43	10.202		
9,100.0	9,085.7	9,122.3	8,985.7	17.1	28.5	105.82	574.8	188.9	331.2	298.4	32.75	10.111		
9,200.0	9,185.7	9,222.3	9,085.7	17.3	28.6	105.98	574.8	188.9	331.4	298.4	33.07	10.021		
9,300.0	9,285.7	9,322.3	9,185.7	17.4	28.7	106.15	574.8	188.9	331.7	298.3	33.40	9.932		
9,400.0	9,385.7	9,422.3	9,285.7	17.6	28.8	106.32	574.8	188.9	332.0	298.3	33.72	9.846		
9,500.0	9,485.7	9,522.3	9,385.7	17.7	28.9	106.49	574.8	188.9	332.3	298.2	34.05	9.760		
9,600.0	9,585.7	9,622.3	9,485.7	17.9	29.0	106.65	574.8	188.9	332.6	298.2	34.37	9.676		
9,700.0	9,685.7	9,722.2	9,585.7	18.1	29.1	106.82	574.8	188.9	332.9	298.2	34.70	9.594		
9,800.0	9,785.7	9,822.2	9,685.7	18.2	29.2	106.99	574.8	188.9	333.2	298.1	35.02	9.513		
9,900.0	9,885.7	9,922.2	9,785.7	18.4	29.3	107.15	574.8	188.9	333.5	298.1	35.35	9.433		
10,000.0	9,985.7	10,022.2	9,885.7	18.5	29.4	107.32	574.8	188.9	333.8	298.1	35.68	9.355		
10,088.3	10,074.0	10,110.5	9,974.0	18.7	29.5	107.46	574.8	188.9	334.0	298.1	35.97	9.286 ES, SF		

Cathedral Energy Services

Anticollision Report

Company:	Berry Petroleum Company (NAD 83)	Local Co-ordinate Reference:	Well Chevron 6-23D
Project:	Garfield County	TVD Reference:	KBE @ 8244.0ft (Original Well Elev)
Reference Site:	Sec 6 T6S R96W (F06 696)	MD Reference:	KBE @ 8244.0ft (Original Well Elev)
Site Error:	0.0ft	North Reference:	True
Reference Well:	Chevron 6-23D	Survey Calculation Method:	Minimum Curvature
Well Error:	0.0ft	Output errors are at	2.00 sigma
Reference Wellbore	DD	Database:	EDM 5000.1 US Multi Users DB
Reference Design:	Plan #2	Offset TVD Reference:	Offset Datum

Offset Design Chevron C06 696 (NWNW S6-T6S-R96W) - Chevron 6-26D - DD - Plan #1													Offset Site Error:	0.0 ft
Survey Program: O-MWD													Offset Well Error:	0.0 ft
Reference		Offset		Semi Major Axis			Distance						Warning	
Measured Depth (ft)	Vertical Depth (ft)	Measured Depth (ft)	Vertical Depth (ft)	Reference (ft)	Offset (ft)	Highside Toolface (°)	Offset Wellbore Centre +N/-S (ft)	+E/-W (ft)	Between Centres (ft)	Between Ellipses (ft)	Total Uncertainty Axis	Separation Factor		
5,200.0	5,187.6	5,232.9	5,204.8	10.9	13.0	-52.67	1,441.8	164.2	1,217.3	1,197.7	19.67	61.901		
5,300.0	5,287.4	5,331.7	5,303.1	11.2	13.2	-52.80	1,431.8	167.9	1,202.7	1,182.6	20.04	60.001		
5,400.0	5,387.1	5,430.6	5,401.4	11.4	13.5	-52.93	1,421.8	171.6	1,188.0	1,167.6	20.42	58.173		
5,500.0	5,486.9	5,529.5	5,499.7	11.6	13.8	-53.07	1,411.8	175.2	1,173.3	1,152.5	20.80	56.411		
5,600.0	5,586.6	5,628.4	5,598.0	11.8	14.0	-53.21	1,401.8	178.9	1,158.7	1,137.5	21.18	54.713		
5,700.0	5,686.3	5,727.2	5,696.3	12.0	14.3	-53.36	1,391.9	182.6	1,144.0	1,122.5	21.56	53.074		
5,800.0	5,786.1	5,826.1	5,794.6	12.2	14.5	-53.51	1,381.9	186.3	1,129.4	1,107.5	21.93	51.493		
5,900.0	5,885.9	5,925.1	5,893.1	12.4	14.8	-53.40	1,371.9	190.0	1,115.6	1,093.3	22.31	49.999		
6,000.0	5,985.9	6,024.4	5,991.8	12.6	15.0	-53.16	1,361.8	193.7	1,103.9	1,081.2	22.66	48.705		
6,100.0	6,085.9	6,123.9	6,090.6	12.7	15.3	-53.16	1,351.8	197.4	1,093.5	1,070.5	23.00	47.543		
6,200.0	6,185.9	6,223.3	6,199.5	12.8	15.5	-53.16	1,341.8	201.1	1,083.3	1,060.0	23.33	46.431		
6,300.0	6,285.9	6,322.7	6,288.3	13.0	15.8	-53.16	1,331.7	204.8	1,073.4	1,049.7	23.66	45.358		
6,400.0	6,385.9	6,422.2	6,387.2	13.1	16.0	-53.16	1,321.7	208.5	1,063.4	1,039.4	24.00	44.313		
6,500.0	6,485.9	6,521.6	6,486.0	13.3	16.3	-53.16	1,311.6	212.2	1,053.5	1,029.2	24.33	43.296		
6,600.0	6,585.9	6,621.0	6,584.9	13.4	16.6	-53.16	1,301.6	216.0	1,043.6	1,018.9	24.67	42.304		
6,700.0	6,685.9	6,720.5	6,683.7	13.5	16.8	-53.16	1,291.5	219.7	1,033.7	1,008.7	25.01	41.337		
6,800.0	6,785.9	6,819.9	6,782.6	13.7	17.1	-53.16	1,281.5	223.4	1,023.8	998.4	25.34	40.394		
6,900.0	6,885.9	6,919.3	6,881.5	13.8	17.3	-53.16	1,271.5	227.1	1,013.9	988.2	25.69	39.474		
7,000.0	6,985.9	7,018.7	6,980.3	14.0	17.6	-53.16	1,261.4	230.8	1,004.0	978.0	26.03	38.577		
7,100.0	7,085.8	7,109.5	7,070.6	14.1	17.8	-53.16	1,252.2	234.2	994.2	967.9	26.35	37.726		
7,200.0	7,185.8	7,200.0	7,160.6	14.3	18.0	-53.16	1,244.4	237.1	985.9	959.2	26.68	36.957		
7,300.0	7,285.8	7,266.1	7,226.6	14.4	18.1	-53.16	1,240.4	238.5	980.0	953.0	26.95	36.363		
7,400.0	7,385.8	7,341.4	7,301.9	14.5	18.2	-53.16	1,237.6	239.6	976.6	949.4	27.24	35.856		
7,483.6	7,469.4	7,404.5	7,365.0	14.7	18.3	-53.16	1,236.7	239.9	975.7	948.2	27.48	35.513 CC		
7,500.0	7,485.8	7,418.6	7,379.0	14.7	18.3	-53.16	1,236.6	239.9	975.8	948.2	27.52	35.450 ES		
7,600.0	7,585.8	7,516.4	7,476.8	14.8	18.5	-53.16	1,236.6	239.9	976.2	948.4	27.85	35.057		
7,700.0	7,685.8	7,616.4	7,576.8	15.0	18.6	-53.16	1,236.6	239.9	976.7	948.5	28.17	34.667		
7,800.0	7,785.8	7,716.4	7,676.8	15.1	18.7	-53.16	1,236.6	239.9	977.2	948.7	28.50	34.286		
7,900.0	7,885.8	7,816.4	7,776.8	15.3	18.8	-53.16	1,236.6	239.9	977.6	948.8	28.83	33.912		
8,000.0	7,985.8	7,916.4	7,876.8	15.4	19.0	-53.16	1,236.6	239.9	978.1	948.9	29.16	33.547		
8,100.0	8,085.8	8,016.4	7,976.8	15.6	19.1	-53.16	1,236.6	239.9	978.6	949.1	29.48	33.189		
8,200.0	8,185.8	8,116.4	8,076.8	15.7	19.2	-53.16	1,236.6	239.9	979.0	949.2	29.81	32.838		
8,300.0	8,285.8	8,216.4	8,176.8	15.9	19.3	-53.16	1,236.6	239.9	979.5	949.4	30.14	32.495		
8,400.0	8,385.8	8,316.3	8,276.8	16.0	19.5	-53.16	1,236.6	239.9	980.0	949.5	30.47	32.158		
8,500.0	8,485.8	8,416.3	8,376.8	16.2	19.6	-53.16	1,236.6	239.9	980.4	949.6	30.80	31.829		
8,600.0	8,585.8	8,516.3	8,476.8	16.3	19.7	-53.16	1,236.6	239.9	980.9	949.8	31.13	31.506		
8,700.0	8,685.8	8,616.3	8,576.8	16.5	19.9	-53.16	1,236.6	239.9	981.4	949.9	31.47	31.189		
8,800.0	8,785.8	8,716.3	8,676.8	16.7	20.0	-53.16	1,236.6	239.9	981.9	950.1	31.80	30.878		
8,900.0	8,885.8	8,816.3	8,776.8	16.8	20.1	-53.16	1,236.6	239.9	982.3	950.2	32.13	30.574		
9,000.0	8,985.7	8,916.3	8,876.7	17.0	20.3	-53.16	1,236.6	239.9	982.8	950.4	32.46	30.276		
9,100.0	9,085.7	9,016.3	8,976.7	17.1	20.4	-53.16	1,236.6	239.9	983.3	950.5	32.80	29.983		
9,200.0	9,185.7	9,116.3	9,076.7	17.3	20.5	-53.16	1,236.6	239.9	983.8	950.7	33.13	29.696		
9,300.0	9,285.7	9,216.3	9,176.7	17.4	20.7	-53.16	1,236.6	239.9	984.3	950.8	33.46	29.414		
9,400.0	9,385.7	9,316.3	9,276.7	17.6	20.8	-53.16	1,236.6	239.9	984.7	950.9	33.80	29.138		
9,500.0	9,485.7	9,416.3	9,376.7	17.7	20.9	-53.16	1,236.6	239.9	985.2	951.1	34.13	28.866		
9,600.0	9,585.7	9,516.3	9,476.7	17.9	21.1	-53.16	1,236.6	239.9	985.7	951.2	34.46	28.600		
9,700.0	9,685.7	9,616.3	9,576.7	18.1	21.2	-53.16	1,236.6	239.9	986.2	951.4	34.80	28.339		
9,800.0	9,785.7	9,716.3	9,676.7	18.2	21.3	-53.16	1,236.6	239.9	986.7	951.5	35.14	28.082		
9,900.0	9,885.7	9,816.3	9,776.7	18.4	21.5	-53.16	1,236.6	239.9	987.2	951.7	35.47	27.830		
10,000.0	9,985.7	9,916.3	9,876.7	18.5	21.6	-53.16	1,236.6	239.9	987.6	951.8	35.81	27.583		
10,088.3	10,074.0	10,004.6	9,965.0	18.7	21.8	-53.16	1,236.6	239.9	988.1	952.0	36.10	27.368 SF		

CC - Min centre to center distance or convergent point, SF - min separation factor, ES - min ellipse separation

Cathedral Energy Services

Anticollision Report

Company:	Berry Petroleum Company (NAD 83)	Local Co-ordinate Reference:	Well Chevron 6-23D
Project:	Garfield County	TVD Reference:	KBE @ 8244.0ft (Original Well Elev)
Reference Site:	Sec 6 T6S R96W (F06 696)	MD Reference:	KBE @ 8244.0ft (Original Well Elev)
Site Error:	0.0ft	North Reference:	True
Reference Well:	Chevron 6-23D	Survey Calculation Method:	Minimum Curvature
Well Error:	0.0ft	Output errors are at	2.00 sigma
Reference Wellbore	DD	Database:	EDM 5000.1 US Multi Users DB
Reference Design:	Plan #2	Offset TVD Reference:	Offset Datum

Offset Design Sec 6 T6S R96W (F06 696) - Chevron 6-19D - DD - Plan #2													Offset Site Error: 0.0 ft	
Survey Program: 0-MWD													Offset Well Error: 0.0 ft	
Reference		Offset		Semi Major Axis			Distance							Warning
Measured Depth (ft)	Vertical Depth (ft)	Measured Depth (ft)	Vertical Depth (ft)	Reference (ft)	Offset (ft)	Highside Toolface (°)	Offset Wellbore Centre +N/-S (ft)	+E/-W (ft)	Between Centres (ft)	Between Ellipses (ft)	Total Uncertainty Axis	Separation Factor		
0.0	0.0	0.0	0.0	0.0	0.0	-143.34	-47.3	-35.2	59.0					
100.0	100.0	100.0	100.0	0.1	0.1	-143.34	-47.3	-35.2	59.0	58.8	0.27	216.789		
200.0	200.0	200.0	200.0	0.3	0.3	-143.34	-47.3	-35.2	59.0	58.4	0.62	94.997	CC, ES	
300.0	300.0	298.9	298.9	0.5	0.5	167.81	-48.9	-34.6	61.6	60.6	0.97	63.447		
400.0	399.8	397.3	397.2	0.7	0.7	165.06	-53.6	-32.6	69.5	68.1	1.33	52.166		
500.0	499.6	495.4	494.8	0.9	0.9	161.40	-61.2	-29.2	81.2	79.5	1.71	47.579		
600.0	599.3	594.4	593.5	1.1	1.1	158.14	-70.0	-25.5	94.0	91.9	2.09	44.969		
700.0	699.1	693.5	692.1	1.3	1.4	155.66	-78.7	-21.7	106.9	104.4	2.47	43.237		
800.0	798.8	792.6	790.7	1.5	1.6	153.72	-87.4	-17.9	120.0	117.2	2.86	42.017		
900.0	898.6	891.6	889.3	1.7	1.8	152.16	-96.1	-14.2	133.2	130.0	3.24	41.118		
1,000.0	998.3	990.7	987.9	1.9	2.1	150.88	-104.9	-10.4	146.5	142.9	3.62	40.431		
1,100.0	1,098.1	1,089.7	1,086.5	2.2	2.3	149.82	-113.6	-6.6	159.9	155.9	4.01	39.891		
1,200.0	1,197.8	1,188.8	1,185.1	2.4	2.5	148.92	-122.3	-2.9	173.3	168.9	4.39	39.455		
1,300.0	1,297.5	1,287.9	1,283.7	2.6	2.8	148.15	-131.0	0.9	186.7	181.9	4.78	39.098		
1,400.0	1,397.3	1,386.9	1,382.3	2.8	3.0	147.48	-139.7	4.7	200.2	195.0	5.16	38.799		
1,500.0	1,497.0	1,486.0	1,480.9	3.0	3.2	146.90	-148.5	8.4	213.6	208.1	5.54	38.546		
1,600.0	1,596.8	1,585.1	1,579.5	3.2	3.5	146.38	-157.2	12.2	227.2	221.2	5.93	38.329		
1,700.0	1,696.5	1,684.1	1,678.1	3.4	3.7	145.93	-165.9	16.0	240.7	234.4	6.31	38.142		
1,800.0	1,796.3	1,783.2	1,776.7	3.7	4.0	145.52	-174.6	19.7	254.2	247.5	6.69	37.977		
1,900.0	1,896.0	1,882.3	1,875.4	3.9	4.2	145.15	-183.4	23.5	267.8	260.7	7.08	37.833		
2,000.0	1,995.8	1,981.3	1,974.0	4.1	4.4	144.82	-192.1	27.3	281.3	273.8	7.46	37.704		
2,100.0	2,095.5	2,080.4	2,072.6	4.3	4.7	144.52	-200.8	31.0	294.9	287.0	7.84	37.590		
2,200.0	2,195.3	2,179.5	2,171.2	4.5	4.9	144.25	-209.5	34.8	308.4	300.2	8.23	37.487		
2,300.0	2,295.0	2,278.5	2,269.8	4.7	5.2	143.99	-218.2	38.6	322.0	313.4	8.61	37.393		
2,400.0	2,394.7	2,377.6	2,368.4	4.9	5.4	143.76	-227.0	42.3	335.6	326.6	9.00	37.309		
2,500.0	2,494.5	2,476.7	2,467.0	5.2	5.6	143.55	-235.7	46.1	349.2	339.8	9.38	37.232		
2,600.0	2,594.2	2,575.7	2,565.6	5.4	5.9	143.35	-244.4	49.9	362.8	353.0	9.76	37.161		
2,700.0	2,694.0	2,674.8	2,664.2	5.6	6.1	143.17	-253.1	53.6	376.4	366.2	10.15	37.097		
2,800.0	2,793.7	2,773.8	2,762.8	5.8	6.4	143.00	-261.9	57.4	390.0	379.4	10.53	37.037		
2,900.0	2,893.5	2,872.9	2,861.4	6.0	6.6	142.84	-270.6	61.2	403.6	392.7	10.91	36.982		
3,000.0	2,993.2	2,972.0	2,960.0	6.2	6.8	142.69	-279.3	64.9	417.2	405.9	11.30	36.930		
3,100.0	3,093.0	3,071.0	3,058.6	6.4	7.1	142.56	-288.0	68.7	430.8	419.1	11.68	36.883		
3,200.0	3,192.7	3,170.1	3,157.3	6.7	7.3	142.43	-296.7	72.5	444.4	432.3	12.06	36.838		
3,300.0	3,292.5	3,269.2	3,255.9	6.9	7.6	142.30	-305.5	76.3	458.0	445.6	12.45	36.797		
3,400.0	3,392.2	3,368.2	3,354.5	7.1	7.8	142.19	-314.2	80.0	471.6	458.8	12.83	36.758		
3,500.0	3,491.9	3,467.3	3,453.1	7.3	8.0	142.08	-322.9	83.8	485.2	472.0	13.21	36.722		
3,600.0	3,591.7	3,566.4	3,551.7	7.5	8.3	141.98	-331.6	87.6	498.9	485.3	13.60	36.687		
3,700.0	3,691.4	3,665.4	3,650.3	7.7	8.5	141.88	-340.4	91.3	512.5	498.5	13.98	36.655		
3,800.0	3,791.2	3,764.5	3,748.9	7.9	8.7	141.79	-349.1	95.1	526.1	511.7	14.36	36.625		
3,900.0	3,890.9	3,863.6	3,847.5	8.2	9.0	141.70	-357.8	98.9	539.7	525.0	14.75	36.596		
4,000.0	3,990.7	3,962.6	3,946.1	8.4	9.2	141.61	-366.5	102.6	553.3	538.2	15.13	36.569		
4,100.0	4,090.4	4,061.7	4,044.7	8.6	9.5	141.53	-375.2	106.4	567.0	551.5	15.52	36.543		
4,200.0	4,190.2	4,160.7	4,143.3	8.8	9.7	141.46	-384.0	110.2	580.6	564.7	15.90	36.518		
4,300.0	4,289.9	4,259.8	4,241.9	9.0	9.9	141.39	-392.7	113.9	594.2	577.9	16.28	36.495		
4,400.0	4,389.7	4,358.9	4,340.6	9.2	10.2	141.32	-401.4	117.7	607.9	591.2	16.67	36.473		
4,500.0	4,489.4	4,457.9	4,439.2	9.4	10.4	141.25	-410.1	121.5	621.5	604.4	17.05	36.452		
4,600.0	4,589.1	4,557.0	4,537.8	9.7	10.7	141.19	-418.9	125.2	635.1	617.7	17.43	36.432		
4,700.0	4,688.9	4,656.1	4,636.4	9.9	10.9	141.13	-427.6	129.0	648.7	630.9	17.82	36.412		
4,800.0	4,788.6	4,755.1	4,735.0	10.1	11.1	141.07	-436.3	132.8	662.4	644.2	18.20	36.394		
4,900.0	4,888.4	4,854.2	4,833.6	10.3	11.4	141.01	-445.0	136.5	676.0	657.4	18.58	36.377		
5,000.0	4,988.1	4,953.3	4,932.2	10.5	11.6	140.96	-453.7	140.3	689.6	670.7	18.97	36.360		
5,100.0	5,087.9	5,052.3	5,030.8	10.7	11.9	140.91	-462.5	144.1	703.3	683.9	19.35	36.344		

CC - Min centre to center distance or convergent point, SF - min separation factor, ES - min ellipse separation

Cathedral Energy Services

Anticollision Report

Company:	Berry Petroleum Company (NAD 83)	Local Co-ordinate Reference:	Well Chevron 6-23D
Project:	Garfield County	TVD Reference:	KBE @ 8244.0ft (Original Well Elev)
Reference Site:	Sec 6 T6S R96W (F06 696)	MD Reference:	KBE @ 8244.0ft (Original Well Elev)
Site Error:	0.0ft	North Reference:	True
Reference Well:	Chevron 6-23D	Survey Calculation Method:	Minimum Curvature
Well Error:	0.0ft	Output errors are at	2.00 sigma
Reference Wellbore	DD	Database:	EDM 5000.1 US Multi Users DB
Reference Design:	Plan #2	Offset TVD Reference:	Offset Datum

Offset Design													Offset Site Error: 0.0 ft	
Survey Program: 0-MWD													Offset Well Error: 0.0 ft	
Reference		Offset		Semi Major Axis			Distance						Warning	
Measured Depth (ft)	Vertical Depth (ft)	Measured Depth (ft)	Vertical Depth (ft)	Reference (ft)	Offset (ft)	Highside Toolface (°)	Offset Wellbore Centre +N/-S (ft)	+E/-W (ft)	Between Centres (ft)	Between Ellipses (ft)	Total Uncertainty Axis	Separation Factor		
5,200.0	5,187.6	5,151.4	5,129.4	10.9	12.1	140.86	-471.2	147.8	716.9	697.2	19.73	36.328		
5,300.0	5,287.4	5,250.5	5,228.0	11.2	12.3	140.81	-479.9	151.6	730.5	710.4	20.12	36.313		
5,400.0	5,387.1	5,349.5	5,326.6	11.4	12.6	140.77	-488.6	155.4	744.2	723.7	20.50	36.299		
5,500.0	5,486.9	5,448.6	5,425.2	11.6	12.8	140.72	-497.4	159.1	757.8	736.9	20.88	36.285		
5,600.0	5,586.6	5,547.7	5,523.8	11.8	13.1	140.68	-506.1	162.9	771.4	750.2	21.27	36.272		
5,700.0	5,686.3	5,646.7	5,622.5	12.0	13.3	140.64	-514.8	166.7	785.1	763.4	21.65	36.259		
5,800.0	5,786.1	5,745.8	5,721.1	12.2	13.5	140.60	-523.5	170.4	798.7	776.7	22.03	36.247		
5,900.0	5,885.9	5,845.0	5,819.8	12.4	13.8	140.64	-532.3	174.2	811.2	788.8	22.43	36.169		
6,000.0	5,985.9	5,944.4	5,918.8	12.6	14.0	140.51	-541.0	178.0	821.1	798.3	22.79	36.022		
6,100.0	6,085.9	6,044.0	6,017.9	12.7	14.3	-51.99	-549.8	181.8	829.2	806.1	23.14	35.834		
6,200.0	6,185.9	6,143.5	6,116.9	12.8	14.5	-52.35	-558.5	185.6	837.1	813.6	23.48	35.648		
6,300.0	6,285.9	6,243.0	6,216.0	13.0	14.7	-52.73	-567.3	189.4	844.8	820.9	23.82	35.463		
6,400.0	6,385.9	6,342.6	6,315.1	13.1	15.0	-53.11	-576.1	193.1	852.4	828.3	24.16	35.284		
6,500.0	6,485.9	6,442.1	6,414.2	13.3	15.2	-53.48	-584.8	196.9	860.2	835.7	24.50	35.113		
6,600.0	6,585.9	6,541.7	6,513.3	13.4	15.5	-53.85	-593.6	200.7	867.9	843.1	24.83	34.948		
6,700.0	6,685.9	6,641.2	6,612.4	13.5	15.7	-54.21	-602.4	204.5	875.7	850.5	25.17	34.790		
6,800.0	6,785.9	6,740.8	6,711.5	13.7	15.9	-54.57	-611.1	208.3	883.5	858.0	25.51	34.637		
6,900.0	6,885.9	6,840.3	6,810.6	13.8	16.2	-54.92	-619.9	212.1	891.4	865.5	25.84	34.491		
7,000.0	6,985.9	6,939.9	6,909.6	14.0	16.4	-55.26	-628.7	215.9	899.3	873.1	26.18	34.349		
7,100.0	7,085.8	7,041.2	7,010.5	14.1	16.7	-55.60	-637.6	219.7	907.2	880.7	26.52	34.210		
7,200.0	7,185.8	7,180.1	7,149.1	14.3	16.9	-55.96	-646.4	223.5	912.8	885.9	26.91	33.921		
7,300.0	7,285.8	7,316.8	7,285.7	14.4	17.1	-56.11	-649.1	224.7	914.1	886.8	27.29	33.502		
7,400.0	7,385.8	7,414.6	7,383.5	14.5	17.3	-56.15	-649.3	224.5	913.7	886.1	27.60	33.106		
7,500.0	7,485.8	7,512.4	7,481.3	14.7	17.4	-56.17	-649.6	223.9	913.5	885.6	27.91	32.728		
7,530.3	7,516.2	7,542.1	7,511.0	14.7	17.4	-56.17	-649.7	223.7	913.5	885.5	28.01	32.617		
7,600.0	7,585.8	7,610.3	7,579.2	14.8	17.5	-56.16	-650.1	223.0	913.5	885.3	28.22	32.368		
7,700.0	7,685.8	7,709.0	7,677.9	15.0	17.6	-56.14	-650.9	221.7	913.8	885.3	28.54	32.021		
7,800.0	7,785.8	7,809.0	7,777.9	15.1	17.8	-56.11	-651.6	220.4	914.1	885.2	28.85	31.680		
7,900.0	7,885.8	7,909.0	7,877.9	15.3	17.9	-56.08	-652.4	219.0	914.4	885.2	29.17	31.346		
8,000.0	7,985.8	8,009.0	7,977.9	15.4	18.1	-56.05	-653.2	217.7	914.7	885.2	29.49	31.018		
8,100.0	8,085.8	8,109.0	8,077.9	15.6	18.2	-56.02	-654.0	216.3	915.0	885.2	29.81	30.696		
8,200.0	8,185.8	8,209.0	8,177.9	15.7	18.3	-56.00	-654.7	215.0	915.3	885.2	30.13	30.381		
8,300.0	8,285.8	8,309.0	8,277.8	15.9	18.5	-55.97	-655.5	213.6	915.6	885.2	30.45	30.071		
8,400.0	8,385.8	8,409.0	8,377.8	16.0	18.6	-55.94	-656.3	212.3	915.9	885.1	30.77	29.767		
8,500.0	8,485.8	8,509.0	8,477.8	16.2	18.7	-55.91	-657.1	211.0	916.2	885.1	31.09	29.469		
8,600.0	8,585.8	8,609.0	8,577.8	16.3	18.9	-55.88	-657.8	209.6	916.5	885.1	31.41	29.176		
8,700.0	8,685.8	8,709.0	8,677.8	16.5	19.0	-55.85	-658.6	208.3	916.8	885.1	31.74	28.889		
8,800.0	8,785.8	8,809.0	8,777.8	16.7	19.2	-55.83	-659.4	206.9	917.1	885.1	32.06	28.607		
8,900.0	8,885.8	8,909.0	8,877.8	16.8	19.3	-55.80	-660.2	205.6	917.4	885.0	32.38	28.330		
9,000.0	8,985.7	9,009.0	8,977.7	17.0	19.5	-55.77	-660.9	204.2	917.7	885.0	32.71	28.059		
9,100.0	9,085.7	9,109.0	9,077.7	17.1	19.6	-55.74	-661.7	202.9	918.0	885.0	33.03	27.792		
9,200.0	9,185.7	9,209.0	9,177.7	17.3	19.7	-55.71	-662.5	201.5	918.3	885.0	33.36	27.529		
9,300.0	9,285.7	9,309.0	9,277.7	17.4	19.9	-55.69	-663.3	200.2	918.6	885.0	33.68	27.272		
9,400.0	9,385.7	9,409.0	9,377.7	17.6	20.0	-55.66	-664.1	198.8	918.9	884.9	34.01	27.019		
9,500.0	9,485.7	9,509.0	9,477.7	17.7	20.2	-55.63	-664.8	197.5	919.3	884.9	34.34	26.771		
9,600.0	9,585.7	9,609.0	9,577.7	17.9	20.3	-55.60	-665.6	196.1	919.6	884.9	34.67	26.526		
9,700.0	9,685.7	9,709.0	9,677.6	18.1	20.5	-55.57	-666.4	194.8	919.9	884.9	34.99	26.286		
9,800.0	9,785.7	9,809.0	9,777.6	18.2	20.6	-55.54	-667.2	193.4	920.2	884.8	35.32	26.051		
9,900.0	9,885.7	9,909.0	9,877.6	18.4	20.8	-55.52	-667.9	192.1	920.5	884.8	35.65	25.819		
10,000.0	9,985.7	10,009.0	9,977.6	18.5	20.9	-55.49	-668.7	190.7	920.8	884.8	35.98	25.591		
10,088.3	10,074.0	10,061.3	10,030.0	18.7	21.0	-55.47	-669.1	190.0	921.8	885.5	36.21	25.454 SF		

CC - Min centre to center distance or convergent point, SF - min separation factor, ES - min ellipse separation

Cathedral Energy Services

Anticollision Report

Company:	Berry Petroleum Company (NAD 83)	Local Co-ordinate Reference:	Well Chevron 6-23D
Project:	Garfield County	TVD Reference:	KBE @ 8244.0ft (Original Well Elev)
Reference Site:	Sec 6 T6S R96W (F06 696)	MD Reference:	KBE @ 8244.0ft (Original Well Elev)
Site Error:	0.0ft	North Reference:	True
Reference Well:	Chevron 6-23D	Survey Calculation Method:	Minimum Curvature
Well Error:	0.0ft	Output errors are at	2.00 sigma
Reference Wellbore	DD	Database:	EDM 5000.1 US Multi Users DB
Reference Design:	Plan #2	Offset TVD Reference:	Offset Datum

Offset Design													Offset Site Error:	0.0 ft
Survey Program: 0-MWD													Offset Well Error:	0.0 ft
Reference		Offset		Semi Major Axis			Distance					Warning		
Measured Depth (ft)	Vertical Depth (ft)	Measured Depth (ft)	Vertical Depth (ft)	Reference (ft)	Offset (ft)	Highside Toolface (°)	Offset Wellbore Centre +N/-S (ft)	+E/-W (ft)	Between Centres (ft)	Between Ellipses (ft)	Total Uncertainty Axis			
0.0	0.0	0.0	0.0	0.0	0.0	-143.42	-35.3	-26.2	44.0					
100.0	100.0	100.0	100.0	0.1	0.1	-143.42	-35.3	-26.2	44.0	43.7	0.27	161.588		
200.0	200.0	200.0	200.0	0.3	0.3	-143.42	-35.3	-26.2	44.0	43.4	0.62	70.808 CC, ES		
300.0	300.0	300.0	300.0	0.5	0.5	169.22	-35.3	-26.2	45.7	44.7	0.97	47.115		
400.0	399.8	399.8	399.8	0.7	0.7	170.31	-35.3	-26.2	50.9	49.5	1.32	38.576		
500.0	499.6	499.6	499.6	0.9	0.8	171.49	-35.3	-26.2	57.9	56.2	1.67	34.727		
600.0	599.3	599.1	599.1	1.1	1.0	170.91	-36.5	-25.0	65.1	63.1	2.02	32.251		
700.0	699.1	698.5	698.3	1.3	1.2	167.73	-40.1	-21.3	72.7	70.3	2.38	30.536		
800.0	798.8	797.8	797.3	1.5	1.4	163.14	-45.7	-15.5	81.1	78.4	2.76	29.387		
900.0	898.6	897.2	896.3	1.7	1.6	159.20	-51.5	-9.4	90.1	86.9	3.15	28.596		
1,000.0	998.3	996.6	995.4	1.9	1.8	155.99	-57.4	-3.3	99.4	95.8	3.54	28.037		
1,100.0	1,098.1	1,096.0	1,094.5	2.2	2.0	153.33	-63.2	2.7	108.9	105.0	3.94	27.633		
1,200.0	1,197.8	1,195.5	1,193.6	2.4	2.2	151.10	-69.1	8.8	118.6	114.3	4.34	27.338		
1,300.0	1,297.5	1,294.9	1,292.6	2.6	2.5	149.22	-74.9	14.8	128.5	123.8	4.74	27.118		
1,400.0	1,397.3	1,394.3	1,391.7	2.8	2.7	147.60	-80.8	20.9	138.5	133.4	5.14	26.952		
1,500.0	1,497.0	1,493.8	1,490.8	3.0	2.9	146.20	-86.6	27.0	148.6	143.1	5.54	26.826		
1,600.0	1,596.8	1,593.2	1,589.8	3.2	3.1	144.98	-92.4	33.0	158.8	152.9	5.94	26.729		
1,700.0	1,696.5	1,692.6	1,688.9	3.4	3.4	143.91	-98.3	39.1	169.0	162.7	6.34	26.654		
1,800.0	1,796.3	1,792.0	1,788.0	3.7	3.6	142.96	-104.1	45.2	179.3	172.6	6.74	26.596		
1,900.0	1,896.0	1,891.5	1,887.0	3.9	3.8	142.11	-110.0	51.2	189.7	182.5	7.14	26.550		
2,000.0	1,995.8	1,990.9	1,986.1	4.1	4.0	141.35	-115.8	57.3	200.0	192.5	7.54	26.515		
2,100.0	2,095.5	2,090.3	2,085.2	4.3	4.2	140.67	-121.7	63.3	210.5	202.5	7.95	26.487		
2,200.0	2,195.3	2,189.7	2,184.3	4.5	4.5	140.05	-127.5	69.4	220.9	212.5	8.35	26.465		
2,300.0	2,295.0	2,289.2	2,283.3	4.7	4.7	139.48	-133.4	75.5	231.3	222.6	8.75	26.448		
2,400.0	2,394.7	2,388.6	2,382.4	4.9	4.9	138.97	-139.2	81.5	241.8	232.7	9.15	26.435		
2,500.0	2,494.5	2,488.0	2,481.5	5.2	5.2	138.50	-145.0	87.6	252.3	242.8	9.55	26.426		
2,600.0	2,594.2	2,587.5	2,580.5	5.4	5.4	138.06	-150.9	93.7	262.8	252.9	9.95	26.419		
2,700.0	2,694.0	2,686.9	2,679.6	5.6	5.6	137.66	-156.7	99.7	273.3	263.0	10.35	26.414		
2,800.0	2,793.7	2,786.3	2,778.7	5.8	5.8	137.29	-162.6	105.8	283.9	273.1	10.75	26.410		
2,900.0	2,893.5	2,885.7	2,877.7	6.0	6.1	136.94	-168.4	111.8	294.4	283.3	11.15	26.408		
3,000.0	2,993.2	2,985.2	2,976.8	6.2	6.3	136.62	-174.3	117.9	305.0	293.4	11.55	26.407		
3,100.0	3,093.0	3,084.6	3,075.9	6.4	6.5	136.32	-180.1	124.0	315.5	303.6	11.95	26.407		
3,200.0	3,192.7	3,184.0	3,175.0	6.7	6.7	136.04	-185.9	130.0	326.1	313.8	12.35	26.408		
3,300.0	3,292.5	3,283.4	3,274.0	6.9	7.0	135.78	-191.8	136.1	336.7	323.9	12.75	26.409		
3,400.0	3,392.2	3,382.9	3,373.1	7.1	7.2	135.53	-197.6	142.2	347.3	334.1	13.15	26.411		
3,500.0	3,491.9	3,482.3	3,472.2	7.3	7.4	135.30	-203.5	148.2	357.9	344.3	13.55	26.413		
3,600.0	3,591.7	3,581.7	3,571.2	7.5	7.6	135.08	-209.3	154.3	368.5	354.5	13.95	26.416		
3,700.0	3,691.4	3,681.2	3,670.3	7.7	7.9	134.88	-215.2	160.3	379.1	364.7	14.35	26.419		
3,800.0	3,791.2	3,780.6	3,769.4	7.9	8.1	134.68	-221.0	166.4	389.7	374.9	14.75	26.422		
3,900.0	3,890.9	3,880.0	3,868.5	8.2	8.3	134.50	-226.9	172.5	400.3	385.1	15.15	26.425		
4,000.0	3,990.7	3,979.4	3,967.5	8.4	8.5	134.32	-232.7	178.5	410.9	395.3	15.55	26.429		
4,100.0	4,090.4	4,078.9	4,066.6	8.6	8.8	134.16	-238.5	184.6	421.5	405.6	15.95	26.432		
4,200.0	4,190.2	4,178.3	4,165.7	8.8	9.0	134.00	-244.4	190.7	432.1	415.8	16.35	26.436		
4,300.0	4,289.9	4,277.7	4,264.7	9.0	9.2	133.85	-250.2	196.7	442.7	426.0	16.75	26.440		
4,400.0	4,389.7	4,377.1	4,363.8	9.2	9.5	133.70	-256.1	202.8	453.4	436.2	17.15	26.443		
4,500.0	4,489.4	4,476.6	4,462.9	9.4	9.7	133.57	-261.9	208.8	464.0	446.5	17.54	26.447		
4,600.0	4,589.1	4,576.0	4,561.9	9.7	9.9	133.43	-267.8	214.9	474.6	456.7	17.94	26.451		
4,700.0	4,688.9	4,675.4	4,661.0	9.9	10.1	133.31	-273.6	221.0	485.3	466.9	18.34	26.454		
4,800.0	4,788.6	4,774.9	4,760.1	10.1	10.4	133.19	-279.4	227.0	495.9	477.2	18.74	26.458		
4,900.0	4,888.4	4,874.3	4,859.2	10.3	10.6	133.08	-285.3	233.1	506.5	487.4	19.14	26.462		
5,000.0	4,988.1	4,973.7	4,958.2	10.5	10.8	132.97	-291.1	239.2	517.2	497.6	19.54	26.465		
5,100.0	5,087.9	5,073.1	5,057.3	10.7	11.0	132.86	-297.0	245.2	527.8	507.9	19.94	26.469		

CC - Min centre to center distance or convergent point, SF - min separation factor, ES - min ellipse separation

Cathedral Energy Services

Anticollision Report

Company:	Berry Petroleum Company (NAD 83)	Local Co-ordinate Reference:	Well Chevron 6-23D
Project:	Garfield County	TVD Reference:	KBE @ 8244.0ft (Original Well Elev)
Reference Site:	Sec 6 T6S R96W (F06 696)	MD Reference:	KBE @ 8244.0ft (Original Well Elev)
Site Error:	0.0ft	North Reference:	True
Reference Well:	Chevron 6-23D	Survey Calculation Method:	Minimum Curvature
Well Error:	0.0ft	Output errors are at	2.00 sigma
Reference Wellbore	DD	Database:	EDM 5000.1 US Multi Users DB
Reference Design:	Plan #2	Offset TVD Reference:	Offset Datum

Offset Design Sec 6 T6S R96W (F06 696) - Chevron 6-20D - DD - Plan #2														Offset Site Error:	0.0 ft
Survey Program: O-MWD														Offset Well Error:	0.0 ft
Reference		Offset		Semi Major Axis		Distance									
Measured Depth (ft)	Vertical Depth (ft)	Measured Depth (ft)	Vertical Depth (ft)	Reference (ft)	Offset (ft)	Highside Toolface (°)	Offset Wellbore Centre +N/-S (ft)	+E/-W (ft)	Between Centres (ft)	Between Ellipses (ft)	Total Uncertainty Axis	Separation Factor	Warning		
5,200.0	5,187.6	5,187.2	5,171.1	10.9	11.3	132.92	-302.1	250.5	537.1	516.8	20.35	26.398			
5,300.0	5,287.4	5,301.6	5,285.5	11.2	11.4	133.33	-304.1	252.6	543.7	523.0	20.73	26.231			
5,400.0	5,387.1	5,402.2	5,386.0	11.4	11.6	133.89	-304.2	252.5	548.7	527.7	21.08	26.033			
5,500.0	5,486.9	5,500.6	5,484.5	11.6	11.7	134.46	-304.5	252.0	554.0	532.6	21.42	25.863			
5,600.0	5,586.6	5,600.1	5,584.0	11.8	11.9	135.06	-304.9	251.2	559.5	537.8	21.77	25.706			
5,700.0	5,686.3	5,699.8	5,683.7	12.0	12.0	135.64	-305.4	250.5	565.1	543.0	22.11	25.558			
5,800.0	5,786.1	5,799.5	5,783.3	12.2	12.1	136.21	-305.8	249.8	570.7	548.2	22.45	25.417			
5,900.0	5,885.9	5,899.3	5,883.1	12.4	12.3	136.73	-306.2	249.0	575.3	552.5	22.79	25.239			
6,000.0	5,985.9	5,999.2	5,983.0	12.6	12.4	136.98	-306.7	248.3	577.4	554.3	23.11	24.985			
6,100.0	6,085.9	6,099.2	6,083.0	12.7	12.6	-55.13	-307.1	247.5	577.9	554.4	23.42	24.675			
6,200.0	6,185.9	6,199.2	6,183.0	12.8	12.7	-55.11	-307.5	246.8	578.0	554.3	23.72	24.363			
6,300.0	6,285.9	6,299.2	6,283.0	13.0	12.9	-55.12	-307.9	246.0	578.0	553.9	24.03	24.050			
6,400.0	6,385.9	6,399.2	6,383.0	13.1	13.0	-55.13	-308.4	245.3	577.9	553.5	24.34	23.742			
6,500.0	6,485.9	6,499.2	6,483.0	13.3	13.2	-55.14	-308.8	244.5	577.8	553.1	24.65	23.441			
6,600.0	6,585.9	6,599.2	6,583.0	13.4	13.3	-55.15	-309.2	243.8	577.7	552.7	24.96	23.146			
6,700.0	6,685.9	6,699.2	6,683.0	13.5	13.5	-55.17	-309.7	243.0	577.6	552.3	25.27	22.858			
6,800.0	6,785.9	6,799.2	6,783.0	13.7	13.6	-55.18	-310.1	242.3	577.5	552.0	25.58	22.576			
6,900.0	6,885.9	6,899.2	6,883.0	13.8	13.8	-55.19	-310.5	241.5	577.5	551.6	25.90	22.300			
7,000.0	6,985.9	6,999.2	6,983.0	14.0	13.9	-55.20	-311.0	240.8	577.4	551.2	26.21	22.029			
7,100.0	7,085.8	7,099.2	7,083.0	14.1	14.1	-55.21	-311.4	240.0	577.3	550.8	26.52	21.764			
7,200.0	7,185.8	7,199.2	7,183.0	14.3	14.2	-55.23	-311.8	239.3	577.2	550.4	26.84	21.505			
7,300.0	7,285.8	7,299.2	7,283.0	14.4	14.4	-55.24	-312.3	238.5	577.1	550.0	27.16	21.251			
7,400.0	7,385.8	7,399.2	7,383.0	14.5	14.5	-55.25	-312.7	237.8	577.0	549.6	27.47	21.003			
7,500.0	7,485.8	7,499.2	7,483.0	14.7	14.7	-55.26	-313.1	237.1	576.9	549.2	27.79	20.759			
7,600.0	7,585.8	7,599.2	7,583.0	14.8	14.8	-55.27	-313.6	236.3	576.9	548.8	28.11	20.521			
7,700.0	7,685.8	7,699.2	7,683.0	15.0	15.0	-55.28	-314.0	235.6	576.8	548.3	28.43	20.287			
7,800.0	7,785.8	7,799.2	7,783.0	15.1	15.1	-55.30	-314.4	234.8	576.7	547.9	28.75	20.058			
7,900.0	7,885.8	7,899.2	7,883.0	15.3	15.3	-55.31	-314.9	234.1	576.6	547.5	29.07	19.833			
8,000.0	7,985.8	7,999.2	7,983.0	15.4	15.4	-55.32	-315.3	233.3	576.5	547.1	29.39	19.613			
8,100.0	8,085.8	8,099.2	8,083.0	15.6	15.6	-55.33	-315.7	232.6	576.4	546.7	29.72	19.398			
8,200.0	8,185.8	8,199.2	8,183.0	15.7	15.8	-55.34	-316.2	231.8	576.4	546.3	30.04	19.186			
8,300.0	8,285.8	8,299.2	8,283.0	15.9	15.9	-55.36	-316.6	231.1	576.3	545.9	30.36	18.979			
8,400.0	8,385.8	8,399.2	8,383.0	16.0	16.1	-55.37	-317.0	230.3	576.2	545.5	30.69	18.776			
8,500.0	8,485.8	8,499.2	8,483.0	16.2	16.2	-55.38	-317.4	229.6	576.1	545.1	31.01	18.577			
8,600.0	8,585.8	8,599.2	8,582.9	16.3	16.4	-55.39	-317.9	228.8	576.0	544.7	31.34	18.381			
8,700.0	8,685.8	8,699.2	8,682.9	16.5	16.5	-55.40	-318.3	228.1	575.9	544.3	31.66	18.189			
8,800.0	8,785.8	8,799.2	8,782.9	16.7	16.7	-55.42	-318.7	227.3	575.9	543.9	31.99	18.001			
8,900.0	8,885.8	8,899.2	8,882.9	16.8	16.9	-55.43	-319.2	226.6	575.8	543.5	32.32	17.816			
9,000.0	8,985.7	8,999.2	8,982.9	17.0	17.0	-55.44	-319.6	225.8	575.7	543.1	32.64	17.635			
9,100.0	9,085.7	9,099.2	9,082.9	17.1	17.2	-55.45	-320.0	225.1	575.6	542.6	32.97	17.457			
9,200.0	9,185.7	9,199.2	9,182.9	17.3	17.3	-55.46	-320.5	224.4	575.5	542.2	33.30	17.283			
9,300.0	9,285.7	9,299.2	9,282.9	17.4	17.5	-55.48	-320.9	223.6	575.4	541.8	33.63	17.111			
9,400.0	9,385.7	9,399.2	9,382.9	17.6	17.7	-55.49	-321.3	222.9	575.4	541.4	33.96	16.943			
9,500.0	9,485.7	9,499.2	9,482.9	17.7	17.8	-55.50	-321.8	222.1	575.3	541.0	34.29	16.778			
9,600.0	9,585.7	9,599.2	9,582.9	17.9	18.0	-55.51	-322.2	221.4	575.2	540.6	34.62	16.616			
9,700.0	9,685.7	9,699.2	9,682.9	18.1	18.1	-55.52	-322.6	220.6	575.1	540.2	34.95	16.456			
9,800.0	9,785.7	9,799.2	9,782.9	18.2	18.3	-55.54	-323.1	219.9	575.0	539.7	35.28	16.299			
9,900.0	9,885.7	9,899.2	9,882.9	18.4	18.5	-55.55	-323.5	219.1	574.9	539.3	35.61	16.146			
10,000.0	9,985.7	9,999.2	9,982.9	18.5	18.6	-55.56	-323.9	218.4	574.9	538.9	35.94	15.994			
10,048.4	10,034.1	10,047.6	10,031.3	18.6	18.7	-55.57	-324.1	218.0	574.8	538.7	36.10	15.922			
10,088.3	10,074.0	10,055.3	10,039.0	18.7	18.7	-55.57	-324.2	218.0	575.7	539.5	36.18	15.911 SF			

CC - Min centre to center distance or convergent point, SF - min separation factor, ES - min ellipse separation

Cathedral Energy Services

Anticollision Report

Company:	Berry Petroleum Company (NAD 83)	Local Co-ordinate Reference:	Well Chevron 6-23D
Project:	Garfield County	TVD Reference:	KBE @ 8244.0ft (Original Well Elev)
Reference Site:	Sec 6 T6S R96W (F06 696)	MD Reference:	KBE @ 8244.0ft (Original Well Elev)
Site Error:	0.0ft	North Reference:	True
Reference Well:	Chevron 6-23D	Survey Calculation Method:	Minimum Curvature
Well Error:	0.0ft	Output errors are at	2.00 sigma
Reference Wellbore	DD	Database:	EDM 5000.1 US Multi Users DB
Reference Design:	Plan #2	Offset TVD Reference:	Offset Datum

Offset Design Sec 6 T6S R96W (F06 696) - Chevron 6-21D - DD - Plan #2													Offset Site Error:	0.0 ft
Survey Program: 0-MWD													Offset Well Error:	0.0 ft
Reference		Offset		Semi Major Axis			Distance				Total	Separation	Warning	
Measured Depth (ft)	Vertical Depth (ft)	Measured Depth (ft)	Vertical Depth (ft)	Reference (ft)	Offset (ft)	Highside Toolface (°)	Offset Wellbore Centre +N/-S (ft)	+E/-W (ft)	Between Centres (ft)	Between Ellipses (ft)	Uncertainty Axis	Factor		
0.0	0.0	0.0	0.0	0.0	0.0	-143.29	-59.4	-44.3	74.1					
100.0	100.0	100.0	100.0	0.1	0.1	-143.29	-59.4	-44.3	74.1	73.8	0.27	271.989		
200.0	200.0	200.0	200.0	0.3	0.3	-143.29	-59.4	-44.3	74.1	73.4	0.62	119.186 CC, ES		
300.0	300.0	298.2	298.2	0.5	0.5	168.24	-61.0	-44.0	76.9	76.0	0.97	79.393		
400.0	399.8	395.8	395.7	0.7	0.7	166.45	-65.9	-43.0	85.6	84.3	1.32	64.668		
500.0	499.6	492.7	492.2	0.9	0.9	163.98	-74.0	-41.5	98.6	97.0	1.69	58.327		
600.0	599.3	588.6	587.4	1.1	1.1	161.03	-85.2	-39.4	114.4	112.3	2.07	55.233		
700.0	699.1	686.0	683.9	1.3	1.4	158.13	-98.8	-36.8	132.2	129.8	2.46	53.847		
800.0	798.8	784.2	781.0	1.5	1.7	155.88	-112.7	-34.3	150.4	147.5	2.84	52.940		
900.0	898.6	882.4	878.2	1.7	2.0	154.12	-126.5	-31.7	168.7	165.5	3.22	52.322		
1,000.0	998.3	980.6	975.4	1.9	2.3	152.71	-140.3	-29.1	187.2	183.6	3.61	51.885		
1,100.0	1,098.1	1,078.8	1,072.6	2.2	2.6	151.55	-154.1	-26.5	205.8	201.8	3.99	51.565		
1,200.0	1,197.8	1,177.0	1,169.7	2.4	2.9	150.58	-167.9	-23.9	224.4	220.0	4.37	51.324		
1,300.0	1,297.5	1,275.2	1,266.9	2.6	3.2	149.76	-181.7	-21.3	243.1	238.3	4.75	51.138		
1,400.0	1,397.3	1,373.3	1,364.1	2.8	3.5	149.06	-195.5	-18.7	261.8	256.7	5.13	50.992		
1,500.0	1,497.0	1,471.5	1,461.3	3.0	3.8	148.45	-209.3	-16.1	280.5	275.0	5.51	50.876		
1,600.0	1,596.8	1,569.7	1,558.4	3.2	4.1	147.91	-223.1	-13.5	299.3	293.4	5.89	50.781		
1,700.0	1,696.5	1,667.9	1,655.6	3.4	4.4	147.44	-236.9	-10.9	318.1	311.9	6.27	50.703		
1,800.0	1,796.3	1,766.1	1,752.8	3.7	4.7	147.03	-250.7	-8.3	337.0	330.3	6.65	50.638		
1,900.0	1,896.0	1,864.3	1,850.0	3.9	5.0	146.65	-264.5	-5.7	355.8	348.8	7.03	50.583		
2,000.0	1,995.8	1,962.4	1,947.1	4.1	5.3	146.32	-278.3	-3.1	374.6	367.2	7.41	50.537		
2,100.0	2,095.5	2,060.6	2,044.3	4.3	5.5	146.01	-292.2	-0.5	393.5	385.7	7.79	50.497		
2,200.0	2,195.3	2,158.8	2,141.5	4.5	5.8	145.74	-306.0	2.1	412.4	404.2	8.17	50.463		
2,300.0	2,295.0	2,257.0	2,238.7	4.7	6.1	145.49	-319.8	4.7	431.3	422.7	8.55	50.433		
2,400.0	2,394.7	2,355.2	2,335.8	4.9	6.4	145.26	-333.6	7.3	450.1	441.2	8.93	50.407		
2,500.0	2,494.5	2,453.4	2,433.0	5.2	6.7	145.04	-347.4	9.9	469.0	459.7	9.31	50.384		
2,600.0	2,594.2	2,551.6	2,530.2	5.4	7.0	144.85	-361.2	12.5	487.9	478.3	9.69	50.364		
2,700.0	2,694.0	2,649.7	2,627.4	5.6	7.3	144.67	-375.0	15.1	506.8	496.8	10.07	50.345		
2,800.0	2,793.7	2,747.9	2,724.5	5.8	7.6	144.50	-388.8	17.7	525.8	515.3	10.45	50.329		
2,900.0	2,893.5	2,846.1	2,821.7	6.0	7.9	144.34	-402.6	20.2	544.7	533.8	10.83	50.315		
3,000.0	2,993.2	2,944.3	2,918.9	6.2	8.2	144.20	-416.4	22.8	563.6	552.4	11.20	50.302		
3,100.0	3,093.0	3,042.5	3,016.0	6.4	8.5	144.06	-430.2	25.4	582.5	570.9	11.58	50.290		
3,200.0	3,192.7	3,140.7	3,113.2	6.7	8.8	143.93	-444.0	28.0	601.4	589.5	11.96	50.280		
3,300.0	3,292.5	3,238.8	3,210.4	6.9	9.1	143.81	-457.9	30.6	620.4	608.0	12.34	50.270		
3,400.0	3,392.2	3,337.0	3,307.6	7.1	9.4	143.70	-471.7	33.2	639.3	626.6	12.72	50.261		
3,500.0	3,491.9	3,435.2	3,404.7	7.3	9.7	143.59	-485.5	35.8	658.2	645.1	13.10	50.253		
3,600.0	3,591.7	3,533.4	3,501.9	7.5	10.0	143.49	-499.3	38.4	677.1	663.7	13.48	50.246		
3,700.0	3,691.4	3,631.6	3,599.1	7.7	10.3	143.40	-513.1	41.0	696.1	682.2	13.86	50.239		
3,800.0	3,791.2	3,729.8	3,696.3	7.9	10.6	143.31	-526.9	43.6	715.0	700.8	14.23	50.233		
3,900.0	3,890.9	3,828.0	3,793.4	8.2	10.9	143.22	-540.7	46.2	734.0	719.3	14.61	50.227		
4,000.0	3,990.7	3,926.1	3,890.6	8.4	11.2	143.14	-554.5	48.8	752.9	737.9	14.99	50.222		
4,100.0	4,090.4	4,024.3	3,987.8	8.6	11.5	143.06	-568.3	51.4	771.8	756.5	15.37	50.217		
4,200.0	4,190.2	4,122.5	4,085.0	8.8	11.8	142.99	-582.1	54.0	790.8	775.0	15.75	50.212		
4,300.0	4,289.9	4,220.7	4,182.1	9.0	12.1	142.92	-595.9	56.6	809.7	793.6	16.13	50.208		
4,400.0	4,389.7	4,318.9	4,279.3	9.2	12.4	142.85	-609.7	59.2	828.7	812.2	16.51	50.204		
4,500.0	4,489.4	4,417.1	4,376.5	9.4	12.7	142.79	-623.5	61.8	847.6	830.7	16.88	50.200		
4,600.0	4,589.1	4,515.2	4,473.7	9.7	13.0	142.73	-637.4	64.4	866.6	849.3	17.26	50.197		
4,700.0	4,688.9	4,613.4	4,570.8	9.9	13.3	142.67	-651.2	67.0	885.5	867.9	17.64	50.193		
4,800.0	4,788.6	4,711.6	4,668.0	10.1	13.6	142.62	-665.0	69.6	904.5	886.4	18.02	50.190		
4,900.0	4,888.4	4,809.8	4,765.2	10.3	13.9	142.56	-678.8	72.2	923.4	905.0	18.40	50.187		
5,000.0	4,988.1	4,908.0	4,862.4	10.5	14.2	142.51	-692.6	74.7	942.4	923.6	18.78	50.185		
5,100.0	5,087.9	5,006.2	4,959.5	10.7	14.5	142.46	-706.4	77.3	961.3	942.1	19.16	50.182		

CC - Min centre to center distance or convergent point, SF - min separation factor, ES - min ellipse separation

Cathedral Energy Services

Anticollision Report

Company:	Berry Petroleum Company (NAD 83)	Local Co-ordinate Reference:	Well Chevron 6-23D
Project:	Garfield County	TVD Reference:	KBE @ 8244.0ft (Original Well Elev)
Reference Site:	Sec 6 T6S R96W (F06 696)	MD Reference:	KBE @ 8244.0ft (Original Well Elev)
Site Error:	0.0ft	North Reference:	True
Reference Well:	Chevron 6-23D	Survey Calculation Method:	Minimum Curvature
Well Error:	0.0ft	Output errors are at	2.00 sigma
Reference Wellbore	DD	Database:	EDM 5000.1 US Multi Users DB
Reference Design:	Plan #2	Offset TVD Reference:	Offset Datum

Offset Design												Sec 6 T6S R96W (F06 696) - Chevron 6-21D - DD - Plan #2		Offset Site Error:		0.0 ft	
Survey Program:												0-MWD		Offset Well Error:		0.0 ft	
Reference		Offset		Semi Major Axis			Distance							Warning			
Measured Depth (ft)	Vertical Depth (ft)	Measured Depth (ft)	Vertical Depth (ft)	Reference (ft)	Offset (ft)	Highside Toolface (°)	Offset Wellbore Centre +N/-S (ft)	+E/-W (ft)	Between Centres (ft)	Between Ellipses (ft)	Total Uncertainty Axis	Separation Factor					
5,200.0	5,187.6	5,104.4	5,056.7	10.9	14.8	142.41	-720.2	79.9	980.3	960.7	19.53	50.180					
5,300.0	5,287.4	5,202.5	5,153.9	11.2	15.1	142.37	-734.0	82.5	999.2	979.3	19.91	50.177					
5,400.0	5,387.1	5,300.7	5,251.1	11.4	15.4	142.32	-747.8	85.1	1,018.2	997.9	20.29	50.175					
5,500.0	5,486.9	5,398.9	5,348.2	11.6	15.7	142.28	-761.6	87.7	1,037.1	1,016.4	20.67	50.173					
5,600.0	5,586.6	5,497.1	5,445.4	11.8	16.0	142.24	-775.4	90.3	1,056.1	1,035.0	21.05	50.171					
5,700.0	5,686.3	5,595.3	5,542.6	12.0	16.3	142.20	-789.2	92.9	1,075.0	1,053.6	21.43	50.169					
5,800.0	5,786.1	5,693.5	5,639.8	12.2	16.6	142.16	-803.0	95.5	1,094.0	1,072.2	21.81	50.168					
5,900.0	5,885.9	5,791.8	5,737.1	12.4	16.9	142.28	-816.9	98.1	1,111.8	1,089.6	22.21	50.052					
6,000.0	5,985.9	5,890.6	5,834.9	12.6	17.2	142.28	-830.8	100.7	1,127.0	1,104.4	22.59	49.889					
6,100.0	6,085.9	5,989.6	5,932.8	12.7	17.5	-50.11	-844.7	103.3	1,140.3	1,117.4	22.93	49.725					
6,200.0	6,185.9	6,088.6	6,030.8	12.8	17.8	-50.36	-858.6	106.0	1,153.4	1,130.1	23.27	49.569					
6,300.0	6,285.9	6,187.6	6,128.8	13.0	18.1	-50.62	-872.5	108.6	1,166.2	1,142.6	23.60	49.415					
6,400.0	6,385.9	6,286.6	6,226.8	13.1	18.4	-50.90	-886.5	111.2	1,179.1	1,155.1	23.93	49.269					
6,500.0	6,485.9	6,385.6	6,324.8	13.3	18.7	-51.17	-900.4	113.8	1,191.9	1,167.7	24.26	49.128					
6,600.0	6,585.9	6,484.6	6,422.8	13.4	19.0	-51.43	-914.3	116.4	1,204.8	1,180.2	24.59	48.992					
6,700.0	6,685.9	6,583.7	6,520.8	13.5	19.3	-51.69	-928.2	119.0	1,217.8	1,192.8	24.92	48.861 SF					

Cathedral Energy Services

Anticollision Report

Company:	Berry Petroleum Company (NAD 83)	Local Co-ordinate Reference:	Well Chevron 6-23D
Project:	Garfield County	TVD Reference:	KBE @ 8244.0ft (Original Well Elev)
Reference Site:	Sec 6 T6S R96W (F06 696)	MD Reference:	KBE @ 8244.0ft (Original Well Elev)
Site Error:	0.0ft	North Reference:	True
Reference Well:	Chevron 6-23D	Survey Calculation Method:	Minimum Curvature
Well Error:	0.0ft	Output errors are at	2.00 sigma
Reference Wellbore	DD	Database:	EDM 5000.1 US Multi Users DB
Reference Design:	Plan #2	Offset TVD Reference:	Offset Datum

Offset Design Sec 6 T6S R96W (F06 696) - Chevron 6-22D - DD - Plan #3													Offset Site Error:	0.0 ft
Survey Program: 0-MWD													Offset Well Error:	0.0 ft
Reference		Offset		Semi Major Axis			Distance					Total Uncertainty Axis	Separation Factor	Warning
Measured Depth (ft)	Vertical Depth (ft)	Measured Depth (ft)	Vertical Depth (ft)	Reference (ft)	Offset (ft)	Highside Toolface (°)	Offset Wellbore Centre +N/-S (ft)	+E/-W (ft)	Between Centres (ft)	Between Ellipses (ft)				
0.0	0.0	0.0	0.0	0.0	0.0	-142.69	-22.9	-17.5	28.8					
100.0	100.0	100.0	100.0	0.1	0.1	-142.69	-22.9	-17.5	28.8	28.6	0.27	105.939		
200.0	200.0	200.0	200.0	0.3	0.3	-142.69	-22.9	-17.5	28.8	28.2	0.62	46.423 CC, ES		
300.0	300.0	300.0	300.0	0.5	0.5	170.11	-22.9	-17.5	30.6	29.6	0.97	31.502		
400.0	399.8	399.8	399.8	0.7	0.7	171.54	-22.9	-17.5	35.7	34.4	1.32	27.104		
500.0	499.6	499.6	499.6	0.9	0.8	172.94	-22.9	-17.5	42.8	41.1	1.67	25.672		
600.0	599.3	599.3	599.3	1.1	1.0	173.95	-22.9	-17.5	49.9	47.9	2.02	24.746		
700.0	699.1	699.1	699.1	1.3	1.2	174.71	-22.9	-17.5	57.0	54.6	2.36	24.099		
800.0	798.8	798.8	798.8	1.5	1.4	175.29	-22.9	-17.5	64.1	61.4	2.71	23.622		
900.0	898.6	898.6	898.6	1.7	1.5	175.76	-22.9	-17.5	71.2	68.1	3.06	23.255		
1,000.0	998.3	998.3	998.3	1.9	1.7	176.15	-22.9	-17.5	78.3	74.9	3.41	22.965		
1,100.0	1,098.1	1,100.4	1,100.3	2.2	1.9	175.73	-22.7	-15.7	84.1	80.3	3.76	22.344		
1,200.0	1,197.8	1,202.6	1,202.4	2.4	2.1	173.83	-22.1	-10.4	87.2	83.0	4.12	21.146		
1,300.0	1,297.5	1,304.6	1,304.0	2.6	2.3	170.46	-20.9	-1.4	87.7	83.3	4.49	19.531		
1,382.8	1,380.1	1,387.2	1,386.2	2.8	2.4	167.16	-19.9	7.1	87.6	82.8	4.81	18.219		
1,400.0	1,397.3	1,404.4	1,403.3	2.8	2.5	166.47	-19.7	8.8	87.6	82.7	4.87	17.972		
1,500.0	1,497.0	1,504.2	1,502.6	3.0	2.7	162.49	-18.4	19.1	87.9	82.6	5.27	16.671		
1,600.0	1,596.8	1,604.0	1,601.9	3.2	2.9	158.56	-17.1	29.3	88.6	82.9	5.69	15.584		
1,700.0	1,696.5	1,703.9	1,701.1	3.4	3.1	154.70	-15.8	39.6	89.7	83.6	6.11	14.675		
1,800.0	1,796.3	1,803.7	1,800.4	3.7	3.4	150.96	-14.6	49.9	91.2	84.7	6.56	13.916		
1,900.0	1,896.0	1,903.5	1,899.7	3.9	3.6	147.35	-13.3	60.1	93.1	86.1	7.01	13.285		
2,000.0	1,995.8	2,003.3	1,999.0	4.1	3.8	143.90	-12.0	70.4	95.4	87.9	7.47	12.763		
2,100.0	2,095.5	2,103.1	2,098.2	4.3	4.1	140.62	-10.7	80.6	98.0	90.0	7.94	12.332		
2,200.0	2,195.3	2,202.9	2,197.5	4.5	4.3	137.51	-9.4	90.9	100.8	92.4	8.42	11.978		
2,300.0	2,295.0	2,302.7	2,296.8	4.7	4.5	134.59	-8.2	101.2	104.0	95.1	8.90	11.689		
2,400.0	2,394.7	2,402.5	2,396.1	4.9	4.8	131.84	-6.9	111.4	107.4	98.0	9.38	11.456		
2,500.0	2,494.5	2,502.4	2,495.3	5.2	5.0	129.27	-5.6	121.7	111.1	101.2	9.86	11.269		
2,600.0	2,594.2	2,602.2	2,594.6	5.4	5.3	126.87	-4.3	131.9	114.9	104.6	10.34	11.120		
2,700.0	2,694.0	2,702.0	2,693.9	5.6	5.5	124.63	-3.1	142.2	119.0	108.2	10.81	11.003		
2,800.0	2,793.7	2,801.8	2,793.2	5.8	5.8	122.53	-1.8	152.5	123.2	111.9	11.29	10.914		
2,900.0	2,893.5	2,901.6	2,892.4	6.0	6.0	120.58	-0.5	162.7	127.6	115.8	11.76	10.846		
3,000.0	2,993.2	3,001.4	2,991.7	6.2	6.2	118.76	0.8	173.0	132.1	119.8	12.23	10.798		
3,100.0	3,093.0	3,101.2	3,091.0	6.4	6.5	117.06	2.1	183.2	136.7	124.0	12.70	10.765		
3,200.0	3,192.7	3,201.4	3,190.6	6.7	6.7	115.57	3.3	193.3	141.4	128.3	13.16	10.746		
3,300.0	3,292.5	3,302.1	3,291.1	6.9	6.9	115.26	4.2	200.6	145.7	132.1	13.57	10.738		
3,400.0	3,392.2	3,402.8	3,391.7	7.1	7.1	116.31	4.7	204.4	149.4	135.5	13.93	10.724		
3,500.0	3,491.9	3,503.0	3,491.9	7.3	7.2	118.51	4.7	204.9	152.8	138.5	14.26	10.715		
3,600.0	3,591.7	3,602.5	3,591.4	7.5	7.4	120.93	4.5	204.6	156.5	141.9	14.57	10.737		
3,700.0	3,691.4	3,702.2	3,691.1	7.7	7.5	123.32	4.2	204.1	160.5	145.6	14.88	10.787		
3,800.0	3,791.2	3,801.9	3,790.8	7.9	7.7	125.59	3.9	203.5	164.8	149.6	15.18	10.855		
3,900.0	3,890.9	3,901.6	3,890.5	8.2	7.8	127.73	3.6	203.0	169.3	153.8	15.48	10.939		
4,000.0	3,990.7	4,001.3	3,990.2	8.4	8.0	129.77	3.3	202.5	174.0	158.3	15.77	11.035		
4,100.0	4,090.4	4,101.0	4,089.9	8.6	8.1	131.70	3.0	201.9	179.0	162.9	16.06	11.142		
4,200.0	4,190.2	4,200.7	4,189.6	8.8	8.3	133.52	2.7	201.4	184.1	167.8	16.36	11.257		
4,300.0	4,289.9	4,300.4	4,289.3	9.0	8.4	135.23	2.4	200.9	189.4	172.8	16.65	11.379		
4,400.0	4,389.7	4,400.1	4,389.0	9.2	8.6	136.86	2.1	200.4	194.9	178.0	16.94	11.506		
4,500.0	4,489.4	4,499.8	4,488.7	9.4	8.7	138.39	1.8	199.8	200.6	183.3	17.24	11.636		
4,600.0	4,589.1	4,599.5	4,588.4	9.7	8.9	139.84	1.5	199.3	206.3	188.8	17.53	11.769		
4,700.0	4,688.9	4,699.2	4,688.1	9.9	9.0	141.22	1.2	198.8	212.2	194.4	17.83	11.904		
4,800.0	4,788.6	4,798.9	4,787.8	10.1	9.2	142.51	0.9	198.2	218.2	200.1	18.13	12.040		
4,900.0	4,888.4	4,898.6	4,887.5	10.3	9.3	143.74	0.6	197.7	224.3	205.9	18.43	12.176		
5,000.0	4,988.1	4,998.3	4,987.2	10.5	9.5	144.90	0.3	197.2	230.5	211.8	18.73	12.311		

CC - Min centre to center distance or convergent point, SF - min separation factor, ES - min ellipse separation

Cathedral Energy Services

Anticollision Report

Company:	Berry Petroleum Company (NAD 83)	Local Co-ordinate Reference:	Well Chevron 6-23D
Project:	Garfield County	TVD Reference:	KBE @ 8244.0ft (Original Well Elev)
Reference Site:	Sec 6 T6S R96W (F06 696)	MD Reference:	KBE @ 8244.0ft (Original Well Elev)
Site Error:	0.0ft	North Reference:	True
Reference Well:	Chevron 6-23D	Survey Calculation Method:	Minimum Curvature
Well Error:	0.0ft	Output errors are at	2.00 sigma
Reference Wellbore	DD	Database:	EDM 5000.1 US Multi Users DB
Reference Design:	Plan #2	Offset TVD Reference:	Offset Datum

Offset Design													Offset Site Error:	0.0 ft
Survey Program: 0-MWD													Offset Well Error:	0.0 ft
Reference		Offset		Semi Major Axis			Distance				Total Uncertainty Axis	Separation Factor	Warning	
Measured Depth (ft)	Vertical Depth (ft)	Measured Depth (ft)	Vertical Depth (ft)	Reference (ft)	Offset (ft)	Highside Toolface (°)	Offset Wellbore Centre +N/-S (ft)	+E/-W (ft)	Between Centres (ft)	Between Ellipses (ft)				
5,100.0	5,087.9	5,098.0	5,086.9	10.7	9.6	146.00	-0.1	196.7	236.8	217.8	19.03	12.446		
5,200.0	5,187.6	5,197.7	5,186.6	10.9	9.8	147.04	-0.4	196.1	243.2	223.9	19.34	12.580		
5,300.0	5,287.4	5,297.4	5,286.3	11.2	9.9	148.03	-0.7	195.6	249.7	230.0	19.64	12.712		
5,400.0	5,387.1	5,397.1	5,386.0	11.4	10.1	148.97	-1.0	195.1	256.2	236.3	19.95	12.842		
5,500.0	5,486.9	5,496.8	5,485.7	11.6	10.3	149.86	-1.3	194.5	262.8	242.5	20.26	12.971		
5,600.0	5,586.6	5,596.5	5,585.4	11.8	10.4	150.71	-1.6	194.0	269.5	248.9	20.57	13.098		
5,700.0	5,686.3	5,696.2	5,685.1	12.0	10.6	151.52	-1.9	193.5	276.2	255.3	20.89	13.223		
5,800.0	5,786.1	5,795.9	5,784.8	12.2	10.7	152.29	-2.2	192.9	282.9	261.7	21.20	13.345		
5,900.0	5,885.9	5,895.7	5,884.6	12.4	10.9	152.94	-2.5	192.4	288.5	267.0	21.52	13.405		
6,000.0	5,985.9	5,995.7	5,984.5	12.6	11.1	153.23	-2.8	191.9	290.9	269.1	21.83	13.326		
6,100.0	6,085.9	6,095.7	6,084.5	12.7	11.2	-38.88	-3.1	191.4	291.3	269.2	22.16	13.148		
6,200.0	6,185.9	6,195.7	6,184.5	12.8	11.4	-38.88	-3.4	190.8	291.3	268.9	22.49	12.957		
6,300.0	6,285.9	6,295.7	6,284.5	13.0	11.5	-38.92	-3.7	190.3	291.1	268.3	22.82	12.757		
6,400.0	6,385.9	6,395.7	6,384.5	13.1	11.7	-38.97	-4.0	189.8	290.8	267.6	23.15	12.561		
6,500.0	6,485.9	6,495.7	6,484.5	13.3	11.9	-39.02	-4.3	189.2	290.5	267.0	23.48	12.370		
6,600.0	6,585.9	6,595.7	6,584.5	13.4	12.0	-39.07	-4.6	188.7	290.1	266.3	23.81	12.184		
6,700.0	6,685.9	6,695.7	6,684.5	13.5	12.2	-39.12	-5.0	188.2	289.8	265.7	24.15	12.003		
6,800.0	6,785.9	6,795.7	6,784.5	13.7	12.4	-39.17	-5.3	187.6	289.5	265.0	24.48	11.826		
6,900.0	6,885.9	6,895.7	6,884.5	13.8	12.5	-39.22	-5.6	187.1	289.2	264.4	24.82	11.655		
7,000.0	6,985.9	6,995.7	6,984.5	14.0	12.7	-39.27	-5.9	186.6	288.9	263.8	25.15	11.487		
7,100.0	7,085.8	7,095.7	7,084.5	14.1	12.9	-39.32	-6.2	186.0	288.6	263.1	25.49	11.324		
7,200.0	7,185.8	7,195.6	7,184.5	14.3	13.0	-39.37	-6.5	185.5	288.3	262.5	25.82	11.165		
7,300.0	7,285.8	7,295.6	7,284.5	14.4	13.2	-39.42	-6.8	185.0	288.0	261.8	26.16	11.010		
7,400.0	7,385.8	7,395.6	7,384.5	14.5	13.4	-39.47	-7.1	184.5	287.7	261.2	26.49	10.858		
7,500.0	7,485.8	7,495.6	7,484.5	14.7	13.5	-39.52	-7.4	183.9	287.4	260.6	26.83	10.711		
7,600.0	7,585.8	7,595.6	7,584.5	14.8	13.7	-39.57	-7.7	183.4	287.1	259.9	27.17	10.567		
7,700.0	7,685.8	7,695.6	7,684.5	15.0	13.9	-39.62	-8.0	182.9	286.8	259.3	27.51	10.426		
7,800.0	7,785.8	7,795.6	7,784.5	15.1	14.0	-39.67	-8.3	182.3	286.5	258.6	27.84	10.289		
7,900.0	7,885.8	7,895.6	7,884.5	15.3	14.2	-39.72	-8.6	181.8	286.2	258.0	28.18	10.155		
8,000.0	7,985.8	7,995.6	7,984.5	15.4	14.4	-39.77	-8.9	181.3	285.9	257.3	28.52	10.023		
8,100.0	8,085.8	8,095.6	8,084.4	15.6	14.5	-39.82	-9.3	180.7	285.6	256.7	28.86	9.895		
8,200.0	8,185.8	8,195.6	8,184.4	15.7	14.7	-39.87	-9.6	180.2	285.3	256.1	29.20	9.770		
8,300.0	8,285.8	8,295.6	8,284.4	15.9	14.9	-39.92	-9.9	179.7	284.9	255.4	29.53	9.648		
8,400.0	8,385.8	8,395.6	8,384.4	16.0	15.0	-39.97	-10.2	179.1	284.6	254.8	29.87	9.528		
8,500.0	8,485.8	8,495.6	8,484.4	16.2	15.2	-40.03	-10.5	178.6	284.3	254.1	30.21	9.411		
8,600.0	8,585.8	8,595.6	8,584.4	16.3	15.4	-40.08	-10.8	178.1	284.0	253.5	30.55	9.297		
8,700.0	8,685.8	8,695.6	8,684.4	16.5	15.5	-40.13	-11.1	177.5	283.7	252.8	30.89	9.184		
8,800.0	8,785.8	8,795.6	8,784.4	16.7	15.7	-40.18	-11.4	177.0	283.4	252.2	31.23	9.075		
8,900.0	8,885.8	8,895.6	8,884.4	16.8	15.9	-40.23	-11.7	176.5	283.1	251.6	31.57	8.967		
9,000.0	8,985.7	8,995.6	8,984.4	17.0	16.0	-40.28	-12.0	176.0	282.8	250.9	31.91	8.862		
9,100.0	9,085.7	9,095.6	9,084.4	17.1	16.2	-40.34	-12.3	175.4	282.5	250.3	32.25	8.759		
9,200.0	9,185.7	9,195.6	9,184.4	17.3	16.4	-40.39	-12.6	174.9	282.2	249.6	32.59	8.659		
9,300.0	9,285.7	9,295.6	9,284.4	17.4	16.5	-40.44	-12.9	174.4	281.9	249.0	32.94	8.560		
9,400.0	9,385.7	9,395.6	9,384.4	17.6	16.7	-40.49	-13.2	173.8	281.6	248.3	33.28	8.463		
9,500.0	9,485.7	9,495.6	9,484.4	17.7	16.9	-40.54	-13.6	173.3	281.3	247.7	33.62	8.368		
9,600.0	9,585.7	9,595.6	9,584.4	17.9	17.0	-40.60	-13.9	172.8	281.0	247.1	33.96	8.275		
9,700.0	9,685.7	9,695.6	9,684.4	18.1	17.2	-40.65	-14.2	172.2	280.7	246.4	34.30	8.184		
9,800.0	9,785.7	9,795.6	9,784.4	18.2	17.4	-40.70	-14.5	171.7	280.4	245.8	34.64	8.095		
9,900.0	9,885.7	9,895.6	9,884.4	18.4	17.6	-40.76	-14.8	171.2	280.1	245.1	34.98	8.007		
10,000.0	9,985.7	9,995.6	9,984.4	18.5	17.7	-40.81	-15.1	170.6	279.8	244.5	35.33	7.921		
10,055.6	10,041.2	10,051.2	10,040.0	18.6	17.8	-40.84	-15.3	170.4	279.6	244.1	35.52	7.874 SF		
10,088.3	10,074.0	10,060.2	10,049.0	18.7	17.8	-40.84	-15.3	170.3	280.5	245.0	35.59	7.883		

CC - Min centre to center distance or convergent point, SF - min separation factor, ES - min ellipse separation

Cathedral Energy Services

Anticollision Report

Company:	Berry Petroleum Company (NAD 83)	Local Co-ordinate Reference:	Well Chevron 6-23D
Project:	Garfield County	TVD Reference:	KBE @ 8244.0ft (Original Well Elev)
Reference Site:	Sec 6 T6S R96W (F06 696)	MD Reference:	KBE @ 8244.0ft (Original Well Elev)
Site Error:	0.0ft	North Reference:	True
Reference Well:	Chevron 6-23D	Survey Calculation Method:	Minimum Curvature
Well Error:	0.0ft	Output errors are at	2.00 sigma
Reference Wellbore	DD	Database:	EDM 5000.1 US Multi Users DB
Reference Design:	Plan #2	Offset TVD Reference:	Offset Datum

Cathedral Energy Services

Anticollision Report

Company:	Berry Petroleum Company (NAD 83)	Local Co-ordinate Reference:	Well Chevron 6-23D
Project:	Garfield County	TVD Reference:	KBE @ 8244.0ft (Original Well Elev)
Reference Site:	Sec 6 T6S R96W (F06 696)	MD Reference:	KBE @ 8244.0ft (Original Well Elev)
Site Error:	0.0ft	North Reference:	True
Reference Well:	Chevron 6-23D	Survey Calculation Method:	Minimum Curvature
Well Error:	0.0ft	Output errors are at	2.00 sigma
Reference Wellbore	DD	Database:	EDM 5000.1 US Multi Users DB
Reference Design:	Plan #2	Offset TVD Reference:	Offset Datum

Offset Design													Offset Site Error:	0.0 ft
Survey Program: 139-MWD													Offset Well Error:	0.0 ft
Reference		Offset		Semi Major Axis		Distance		Total		Separation		Warning		
Measured Depth (ft)	Vertical Depth (ft)	Measured Depth (ft)	Vertical Depth (ft)	Reference (ft)	Offset (ft)	Highside Toolface (°)	Offset Wellbore Centre +N/-S (ft)	+E/-W (ft)	Between Centres (ft)	Between Ellipses (ft)	Uncertainty Axis	Factor		
0.0	0.0	0.0	0.0	0.0	0.0	-143.12	-12.0	-9.0	15.0					
100.0	100.0	100.1	100.1	0.1	0.1	-142.95	-11.6	-8.8	14.5	14.2	0.28	51.182		
200.0	200.0	200.3	200.3	0.3	0.3	-141.87	-10.1	-8.0	12.9	12.3	0.62	20.642		
300.0	300.0	300.5	300.4	0.5	0.5	178.15	-6.7	-6.8	11.3	10.3	0.98	11.606		
318.1	318.0	318.6	318.5	0.5	0.5	-179.05	-5.8	-6.7	11.3	10.2	1.04	10.833 CC, ES		
400.0	399.8	400.7	400.4	0.7	0.7	-162.02	-0.2	-5.7	11.9	10.5	1.36	8.754		
500.0	499.6	500.7	499.8	0.9	1.0	-135.24	10.1	-3.8	14.3	12.4	1.83	7.794 SF		
600.0	599.3	599.9	598.2	1.1	1.2	-112.97	22.7	-2.7	20.3	18.0	2.31	8.808		
700.0	699.1	698.9	696.2	1.3	1.5	-101.91	36.6	-3.6	30.3	27.6	2.75	11.027		
800.0	798.8	798.7	795.0	1.5	1.8	-95.72	50.9	-4.1	40.9	37.7	3.18	12.846		
900.0	898.6	898.6	893.8	1.7	2.1	-90.61	65.2	-2.8	50.4	46.8	3.61	13.960		
1,000.0	998.3	997.7	991.9	1.9	2.4	-86.98	79.7	-1.5	60.4	56.4	4.03	15.001		
1,100.0	1,098.1	1,096.9	1,089.9	2.2	2.7	-83.62	94.8	0.6	70.7	66.3	4.45	15.906		
1,200.0	1,197.8	1,195.9	1,187.6	2.4	3.1	-80.98	110.8	2.2	82.1	77.3	4.86	16.906		
1,300.0	1,297.5	1,296.1	1,286.6	2.6	3.4	-78.99	126.4	4.3	92.9	87.7	5.27	17.642		
1,400.0	1,397.3	1,396.1	1,385.6	2.8	3.7	-78.06	140.7	5.7	103.1	97.4	5.68	18.140		
1,500.0	1,497.0	1,496.1	1,484.5	3.0	4.0	-77.20	154.7	7.5	112.8	106.7	6.10	18.486		
1,600.0	1,596.8	1,595.6	1,583.0	3.2	4.3	-76.44	168.5	9.4	122.4	115.9	6.52	18.780		
1,700.0	1,696.5	1,695.4	1,681.9	3.4	4.6	-76.09	182.0	10.8	132.0	125.0	6.93	19.030		
1,800.0	1,796.3	1,795.5	1,781.2	3.7	4.9	-75.98	195.0	11.9	141.2	133.8	7.36	19.185		
1,900.0	1,896.0	1,895.8	1,880.6	3.9	5.1	-75.84	207.7	13.4	149.9	142.2	7.78	19.272		
2,000.0	1,995.8	1,996.5	1,980.5	4.1	5.4	-75.57	220.2	15.4	158.2	150.0	8.21	19.273		
2,100.0	2,095.5	2,095.7	2,079.0	4.3	5.7	-75.14	232.5	18.0	166.1	157.5	8.62	19.264		
2,200.0	2,195.3	2,195.7	2,178.1	4.5	6.0	-74.82	244.9	20.5	174.2	165.2	9.04	19.272		
2,300.0	2,295.0	2,295.2	2,276.9	4.7	6.2	-74.69	256.9	22.4	182.3	172.8	9.46	19.270		
2,400.0	2,394.7	2,394.0	2,374.9	4.9	6.5	-74.45	269.3	24.6	190.5	180.6	9.88	19.280		
2,500.0	2,494.5	2,490.5	2,470.5	5.2	6.8	-74.08	282.4	26.8	199.8	189.5	10.29	19.414		
2,600.0	2,594.2	2,587.2	2,566.0	5.4	7.1	-73.62	297.1	28.8	210.6	199.9	10.70	19.677		
2,700.0	2,694.0	2,688.2	2,665.8	5.6	7.5	-73.10	312.8	31.0	221.6	210.5	11.12	19.936		
2,800.0	2,793.7	2,786.7	2,763.1	5.8	7.8	-72.81	327.7	32.7	232.5	220.9	11.52	20.171		
2,900.0	2,893.5	2,884.7	2,860.0	6.0	8.1	-72.68	342.7	33.6	243.9	231.9	11.94	20.429		
3,000.0	2,993.2	2,984.5	2,958.6	6.2	8.4	-72.64	358.1	34.1	255.6	243.2	12.35	20.684		
3,100.0	3,093.0	3,086.1	3,059.1	6.4	8.7	-72.77	372.7	34.2	266.4	253.6	12.78	20.841		
3,200.0	3,192.7	3,184.4	3,156.3	6.7	9.0	-72.65	387.2	35.4	277.2	264.0	13.21	20.985		
3,300.0	3,292.5	3,283.7	3,254.2	6.9	9.4	-72.07	403.3	38.5	288.5	274.9	13.62	21.182		
3,400.0	3,392.2	3,384.7	3,354.0	7.1	9.7	-71.62	418.9	41.5	299.2	285.2	14.02	21.337		
3,500.0	3,491.9	3,481.7	3,449.9	7.3	10.0	-71.52	433.2	42.9	309.9	295.5	14.44	21.467		
3,600.0	3,591.7	3,580.6	3,547.5	7.5	10.3	-71.23	449.3	44.9	321.7	306.9	14.85	21.668		
3,700.0	3,691.4	3,678.0	3,643.6	7.7	10.6	-70.92	464.7	47.2	333.1	317.8	15.26	21.825		
3,800.0	3,791.2	3,770.8	3,734.9	7.9	11.0	-70.40	481.5	50.1	346.1	330.5	15.66	22.104		
3,900.0	3,890.9	3,866.9	3,828.9	8.2	11.4	-69.65	500.7	54.1	360.7	344.6	16.04	22.480		
4,000.0	3,990.7	3,962.8	3,922.8	8.4	11.7	-69.09	519.9	57.1	375.7	359.3	16.43	22.866		
4,100.0	4,090.4	4,063.9	4,021.8	8.6	12.1	-68.70	540.4	59.0	391.4	374.6	16.84	23.250		
4,200.0	4,190.2	4,162.6	4,118.6	8.8	12.5	-68.42	559.3	60.8	406.1	388.9	17.24	23.557		
4,300.0	4,289.9	4,255.4	4,209.6	9.0	12.9	-68.20	577.9	62.0	421.8	404.2	17.64	23.918		
4,400.0	4,389.7	4,358.4	4,310.3	9.2	13.3	-67.92	599.3	63.5	438.3	420.2	18.05	24.284		
4,500.0	4,489.4	4,460.6	4,410.5	9.4	13.7	-67.69	619.1	65.2	453.2	434.7	18.46	24.551		
4,600.0	4,589.1	4,564.7	4,512.8	9.7	14.0	-67.54	638.4	66.7	467.5	448.6	18.88	24.765		
4,700.0	4,688.9	4,666.4	4,613.0	9.9	14.4	-67.43	656.3	68.3	480.8	461.5	19.29	24.924		
4,800.0	4,788.6	4,770.5	4,715.5	10.1	14.7	-67.38	673.7	69.7	493.4	473.7	19.71	25.029		
4,900.0	4,888.4	4,863.6	4,807.4	10.3	15.1	-67.33	689.5	71.0	506.2	486.1	20.12	25.162		
5,000.0	4,988.1	4,969.5	4,911.7	10.5	15.4	-67.27	707.3	72.6	518.8	498.2	20.54	25.256		

CC - Min centre to center distance or convergent point, SF - min separation factor, ES - min ellipse separation

Cathedral Energy Services

Anticollision Report

Company:	Berry Petroleum Company (NAD 83)	Local Co-ordinate Reference:	Well Chevron 6-23D
Project:	Garfield County	TVD Reference:	KBE @ 8244.0ft (Original Well Elev)
Reference Site:	Sec 6 T6S R96W (F06 696)	MD Reference:	KBE @ 8244.0ft (Original Well Elev)
Site Error:	0.0ft	North Reference:	True
Reference Well:	Chevron 6-23D	Survey Calculation Method:	Minimum Curvature
Well Error:	0.0ft	Output errors are at	2.00 sigma
Reference Wellbore	DD	Database:	EDM 5000.1 US Multi Users DB
Reference Design:	Plan #2	Offset TVD Reference:	Offset Datum

Offset Design												Offset Site Error:	0.0 ft
Survey Program: 139-MWD												Offset Well Error:	0.0 ft
Reference		Offset		Semi Major Axis			Distance				Total Uncertainty Axis	Separation Factor	Warning
Measured Depth (ft)	Vertical Depth (ft)	Measured Depth (ft)	Vertical Depth (ft)	Reference (ft)	Offset (ft)	Highside Toolface (°)	Offset Wellbore Centre +N/-S (ft)	+E/-W (ft)	Between Centres (ft)	Between Ellipses (ft)			
5,100.0	5,087.9	5,068.9	5,009.8	10.7	15.7	-67.23	723.2	74.2	530.6	509.6	20.96	25.319	
5,200.0	5,187.6	5,159.9	5,099.5	10.9	16.1	-67.18	738.8	75.5	543.5	522.2	21.35	25.454	
5,300.0	5,287.4	5,264.2	5,202.2	11.2	16.4	-67.12	756.8	77.0	556.6	534.9	21.77	25.564	
5,400.0	5,387.1	5,369.4	5,306.0	11.4	16.8	-67.10	773.7	78.5	568.5	546.3	22.20	25.612	
5,500.0	5,486.9	5,469.5	5,404.9	11.6	17.1	-67.16	789.0	79.3	580.0	557.4	22.62	25.646	
5,600.0	5,586.6	5,565.4	5,499.7	11.8	17.4	-67.26	803.7	79.8	591.5	568.5	23.03	25.685	
5,700.0	5,686.3	5,658.7	5,591.7	12.0	17.7	-67.31	819.0	80.3	604.1	580.6	23.44	25.769	
5,800.0	5,786.1	5,758.4	5,689.9	12.2	18.1	-67.21	836.4	82.1	617.2	593.4	23.86	25.873	
5,900.0	5,885.9	5,867.4	5,797.4	12.4	18.4	-67.19	854.5	84.4	630.0	605.7	24.26	25.972	
6,000.0	5,985.9	5,964.1	5,892.8	12.6	18.7	-67.04	869.3	86.0	643.1	618.5	24.57	26.168	
6,100.0	6,085.9	6,051.1	5,978.7	12.7	19.0	101.25	883.8	87.2	658.4	633.5	24.83	26.515	
6,200.0	6,185.9	6,148.7	6,074.6	12.8	19.4	101.88	901.6	88.8	675.3	650.2	25.08	26.927	
6,300.0	6,285.9	6,251.9	6,176.2	13.0	19.8	102.54	919.4	90.4	691.5	666.2	25.33	27.303	
6,400.0	6,385.9	6,350.5	6,273.4	13.1	20.1	103.14	936.2	91.8	707.6	682.0	25.58	27.668	
6,500.0	6,485.9	6,466.1	6,387.5	13.3	20.5	103.76	954.7	93.2	722.9	697.0	25.84	27.971	
6,600.0	6,585.9	6,582.5	6,502.8	13.4	20.8	104.35	970.3	95.3	735.5	709.4	26.12	28.156	
6,700.0	6,685.9	6,698.6	6,618.2	13.5	21.1	104.84	983.1	97.0	746.1	719.7	26.40	28.260	
6,800.0	6,785.9	6,810.7	6,729.9	13.7	21.3	105.13	992.5	97.4	754.3	727.6	26.69	28.259	
6,900.0	6,885.9	6,923.9	6,842.8	13.8	21.5	105.40	1,000.4	97.7	761.3	734.3	26.99	28.207	
7,000.0	6,985.9	7,046.4	6,965.1	14.0	21.7	105.68	1,006.0	98.9	765.7	738.4	27.30	28.045	
7,100.0	7,085.8	7,148.6	7,067.3	14.1	21.8	105.86	1,008.9	99.8	768.6	741.0	27.59	27.855	
7,200.0	7,185.8	7,249.0	7,167.7	14.3	22.0	106.01	1,011.5	100.1	771.3	743.4	27.88	27.662	
7,300.0	7,285.8	7,352.3	7,271.0	14.4	22.1	106.07	1,013.6	99.4	773.7	745.5	28.18	27.453	
7,400.0	7,385.8	7,459.1	7,377.7	14.5	22.2	106.11	1,015.1	98.5	775.6	747.1	28.49	27.224	
7,500.0	7,485.8	7,564.2	7,482.9	14.7	22.3	106.10	1,015.4	97.3	776.4	747.6	28.80	26.958	
7,600.0	7,585.8	7,666.6	7,585.2	14.8	22.4	106.07	1,015.3	95.8	776.9	747.8	29.11	26.693	
7,700.0	7,685.8	7,770.3	7,688.9	15.0	22.5	106.01	1,014.7	94.1	777.0	747.6	29.42	26.413	
7,800.0	7,785.8	7,870.0	7,788.6	15.1	22.6	105.91	1,013.7	91.9	776.9	747.2	29.73	26.134	
7,900.0	7,885.8	7,973.3	7,891.9	15.3	22.7	105.78	1,012.5	89.3	776.7	746.6	30.05	25.848	
7,954.9	7,940.7	8,024.3	7,942.8	15.4	22.7	105.74	1,012.0	88.5	776.5	746.3	30.22	25.696	
8,000.0	7,985.8	8,065.0	7,983.5	15.4	22.8	105.75	1,011.9	88.2	776.6	746.2	30.35	25.587	
8,100.0	8,085.8	8,166.2	8,084.7	15.6	22.9	105.81	1,012.2	88.0	777.2	746.5	30.66	25.351	
8,200.0	8,185.8	8,272.4	8,190.9	15.7	23.0	105.88	1,011.9	87.9	777.2	746.3	30.98	25.091	
8,300.0	8,285.8	8,374.2	8,292.7	15.9	23.1	105.95	1,011.1	88.2	776.6	745.4	31.29	24.824	
8,345.2	8,331.0	8,414.6	8,333.1	16.0	23.2	105.99	1,010.9	88.3	776.5	745.1	31.42	24.715	
8,400.0	8,385.8	8,464.5	8,383.0	16.0	23.2	106.05	1,011.0	88.6	776.7	745.1	31.58	24.595	
8,500.0	8,485.8	8,570.5	8,489.0	16.2	23.3	106.15	1,011.0	89.0	776.9	745.0	31.89	24.360	
8,600.0	8,585.8	8,673.6	8,592.1	16.3	23.4	106.18	1,010.2	88.6	776.5	744.3	32.21	24.110	
8,700.0	8,685.8	8,775.5	8,694.0	16.5	23.5	106.17	1,009.1	87.6	776.0	743.5	32.52	23.859	
8,800.0	8,785.8	8,887.8	8,806.3	16.7	23.6	106.09	1,006.7	86.0	774.6	741.7	32.86	23.571	
8,900.0	8,885.8	8,978.3	8,896.8	16.8	23.7	106.03	1,003.9	85.0	772.2	739.0	33.16	23.286	
8,936.6	8,922.4	9,006.1	8,924.5	16.9	23.7	106.00	1,003.5	84.4	772.0	738.7	33.26	23.208	
9,000.0	8,985.7	9,064.7	8,983.1	17.0	23.8	105.92	1,003.3	82.7	772.4	738.9	33.46	23.085	
9,100.0	9,085.7	9,158.0	9,076.3	17.1	23.9	105.70	1,002.8	78.9	773.1	739.3	33.77	22.892	
9,200.0	9,185.7	9,258.6	9,176.8	17.3	24.0	105.52	1,003.8	75.0	775.3	741.2	34.10	22.733	
9,300.0	9,285.7	9,373.8	9,292.0	17.4	24.1	105.49	1,003.2	73.7	775.3	740.8	34.45	22.506	
9,400.0	9,385.7	9,471.3	9,389.5	17.6	24.2	105.43	1,002.0	72.1	774.8	740.0	34.76	22.289	
9,440.3	9,426.1	9,509.9	9,428.1	17.6	24.3	105.38	1,001.6	71.2	774.7	739.9	34.89	22.205	
9,500.0	9,485.7	9,568.4	9,486.5	17.7	24.3	105.35	1,001.2	70.3	774.8	739.7	35.08	22.084	
9,600.0	9,585.7	9,671.4	9,589.5	17.9	24.4	105.37	1,000.8	69.6	774.8	739.4	35.40	21.885	
9,700.0	9,685.7	9,780.9	9,699.1	18.1	24.5	105.27	999.1	67.6	774.1	738.3	35.74	21.658	
9,800.0	9,785.7	9,886.6	9,804.7	18.2	24.6	105.10	996.1	65.0	772.2	736.1	36.08	21.406	

CC - Min centre to center distance or convergent point, SF - min separation factor, ES - min ellipse separation

Cathedral Energy Services

Anticollision Report

Company:	Berry Petroleum Company (NAD 83)	Local Co-ordinate Reference:	Well Chevron 6-23D
Project:	Garfield County	TVD Reference:	KBE @ 8244.0ft (Original Well Elev)
Reference Site:	Sec 6 T6S R96W (F06 696)	MD Reference:	KBE @ 8244.0ft (Original Well Elev)
Site Error:	0.0ft	North Reference:	True
Reference Well:	Chevron 6-23D	Survey Calculation Method:	Minimum Curvature
Well Error:	0.0ft	Output errors are at	2.00 sigma
Reference Wellbore	DD	Database:	EDM 5000.1 US Multi Users DB
Reference Design:	Plan #2	Offset TVD Reference:	Offset Datum

Offset Design Sec 6 T6S R96W (F06 696) - Chevron 6-25D - DD - DD													Offset Site Error:	0.0 ft
Survey Program: 139-MWD													Offset Well Error:	0.0 ft
Reference		Offset		Semi Major Axis			Distance						Warning	
Measured Depth (ft)	Vertical Depth (ft)	Measured Depth (ft)	Vertical Depth (ft)	Reference (ft)	Offset (ft)	Highside Toolface (°)	Offset Wellbore Centre +N/-S (ft)	+E/-W (ft)	Between Centres (ft)	Between Ellipses (ft)	Total Uncertainty Axis	Separation Factor		
9,900.0	9,885.7	9,992.3	9,910.2	18.4	24.7	104.90	992.3	62.2	769.7	733.3	36.41	21.139		
10,000.0	9,985.7	10,098.6	10,016.4	18.5	24.8	104.64	987.3	58.8	766.3	729.5	36.75	20.851		
10,088.3	10,074.0	10,188.9	10,106.5	18.7	24.8	104.40	982.6	55.9	762.8	725.8	37.05	20.591		

Cathedral Energy Services

Anticollision Report

Company:	Berry Petroleum Company (NAD 83)	Local Co-ordinate Reference:	Well Chevron 6-23D
Project:	Garfield County	TVD Reference:	KBE @ 8244.0ft (Original Well Elev)
Reference Site:	Sec 6 T6S R96W (F06 696)	MD Reference:	KBE @ 8244.0ft (Original Well Elev)
Site Error:	0.0ft	North Reference:	True
Reference Well:	Chevron 6-23D	Survey Calculation Method:	Minimum Curvature
Well Error:	0.0ft	Output errors are at	2.00 sigma
Reference Wellbore	DD	Database:	EDM 5000.1 US Multi Users DB
Reference Design:	Plan #2	Offset TVD Reference:	Offset Datum

Offset Design													Offset Site Error:	0.0 ft
Survey Program: 0-MWD													Offset Well Error:	0.0 ft
Reference		Offset		Semi Major Axis		Highside Toolface (°)	Distance		Total Uncertainty Axis	Separation Factor	Warning			
Measured Depth (ft)	Vertical Depth (ft)	Measured Depth (ft)	Vertical Depth (ft)	Reference (ft)	Offset (ft)		Offset Wellbore Centre +N/-S (ft)	+E/-W (ft)						
0.0	0.0	0.0	0.0	0.0	0.0	-143.33	-143.5	-106.9	178.9					
100.0	100.0	100.0	100.0	0.1	0.1	-143.33	-143.5	-106.9	178.9	178.7	0.27	657.158		
200.0	200.0	200.0	200.0	0.3	0.3	-143.33	-143.5	-106.9	178.9	178.3	0.62	287.968 CC, ES		
300.0	300.0	294.0	294.0	0.5	0.5	169.01	-144.7	-107.9	182.3	181.3	0.96	189.904		
400.0	399.8	387.4	387.3	0.7	0.7	169.32	-148.2	-110.8	192.3	191.0	1.30	148.280		
500.0	499.6	479.8	479.4	0.9	0.9	169.76	-154.0	-115.6	207.4	205.8	1.63	126.997		
600.0	599.3	571.2	570.2	1.1	1.1	170.17	-161.9	-122.3	225.7	223.7	1.97	114.703		
700.0	699.1	661.4	659.5	1.3	1.4	170.53	-172.0	-130.6	247.1	244.8	2.30	107.454		
800.0	798.8	750.4	747.0	1.5	1.7	170.85	-183.9	-140.7	271.6	268.9	2.63	103.308		
900.0	898.6	837.8	832.6	1.7	2.0	171.12	-197.8	-152.2	299.0	296.0	2.95	101.230		
1,000.0	998.3	929.5	921.8	1.9	2.4	171.37	-214.0	-165.8	328.8	325.5	3.29	100.067		
1,100.0	1,098.1	1,024.9	1,014.6	2.2	2.8	171.58	-231.0	-180.0	358.9	355.3	3.62	99.031		
1,200.0	1,197.8	1,120.3	1,107.3	2.4	3.2	171.76	-248.0	-194.2	389.0	385.0	3.96	98.173		
1,300.0	1,297.5	1,215.6	1,200.1	2.6	3.6	171.92	-265.0	-208.5	419.0	414.7	4.30	97.452		
1,400.0	1,397.3	1,311.0	1,292.8	2.8	4.1	172.05	-282.1	-222.7	449.1	444.5	4.64	96.837		
1,500.0	1,497.0	1,406.4	1,385.6	3.0	4.5	172.17	-299.1	-236.9	479.2	474.2	4.98	96.306		
1,600.0	1,596.8	1,501.7	1,478.3	3.2	4.9	172.27	-316.1	-251.2	509.3	503.9	5.31	95.843		
1,700.0	1,696.5	1,597.1	1,571.0	3.4	5.3	172.36	-333.1	-265.4	539.3	533.7	5.65	95.436		
1,800.0	1,796.3	1,692.5	1,663.8	3.7	5.7	172.44	-350.1	-279.6	569.4	563.4	5.99	95.075		
1,900.0	1,896.0	1,787.8	1,756.5	3.9	6.2	172.52	-367.2	-293.9	599.5	593.2	6.33	94.753		
2,000.0	1,995.8	1,883.2	1,849.3	4.1	6.6	172.58	-384.2	-308.1	629.6	622.9	6.66	94.463		
2,100.0	2,095.5	1,978.6	1,942.0	4.3	7.0	172.64	-401.2	-322.3	659.7	652.7	7.00	94.202		
2,200.0	2,195.3	2,073.9	2,034.8	4.5	7.4	172.70	-418.2	-336.5	689.8	682.4	7.34	93.965		
2,300.0	2,295.0	2,169.3	2,127.5	4.7	7.9	172.75	-435.3	-350.8	719.9	712.2	7.68	93.749		
2,400.0	2,394.7	2,264.6	2,220.3	4.9	8.3	172.80	-452.3	-365.0	749.9	741.9	8.02	93.552		
2,500.0	2,494.5	2,360.0	2,313.0	5.2	8.7	172.84	-469.3	-379.2	780.0	771.7	8.35	93.370		
2,600.0	2,594.2	2,455.4	2,405.8	5.4	9.1	172.88	-486.3	-393.5	810.1	801.4	8.69	93.202		
2,700.0	2,694.0	2,550.7	2,498.5	5.6	9.5	172.92	-503.3	-407.7	840.2	831.2	9.03	93.047		
2,800.0	2,793.7	2,646.1	2,591.3	5.8	10.0	172.95	-520.4	-421.9	870.3	860.9	9.37	92.904		
2,900.0	2,893.5	2,741.5	2,684.0	6.0	10.4	172.98	-537.4	-436.2	900.4	890.7	9.71	92.770		
3,000.0	2,993.2	2,836.8	2,776.8	6.2	10.8	173.01	-554.4	-450.4	930.5	920.4	10.04	92.645		
3,100.0	3,093.0	2,932.2	2,869.5	6.4	11.2	173.04	-571.4	-464.6	960.6	950.2	10.38	92.528		
3,200.0	3,192.7	3,027.6	2,962.3	6.7	11.7	173.07	-588.5	-478.9	990.6	979.9	10.72	92.419		
3,300.0	3,292.5	3,122.9	3,055.0	6.9	12.1	173.09	-605.5	-493.1	1,020.7	1,009.7	11.06	92.316		
3,400.0	3,392.2	3,218.3	3,147.8	7.1	12.5	173.12	-622.5	-507.3	1,050.8	1,039.4	11.39	92.220		
3,500.0	3,491.9	3,313.7	3,240.5	7.3	12.9	173.14	-639.5	-521.6	1,080.9	1,069.2	11.73	92.129		
3,600.0	3,591.7	3,409.0	3,333.3	7.5	13.4	173.16	-656.5	-535.8	1,111.0	1,098.9	12.07	92.043		
3,700.0	3,691.4	3,504.4	3,426.0	7.7	13.8	173.18	-673.6	-550.0	1,141.1	1,128.7	12.41	91.961		
3,800.0	3,791.2	3,599.8	3,518.8	7.9	14.2	173.20	-690.6	-564.3	1,171.2	1,158.4	12.75	91.884		
3,900.0	3,890.9	3,695.1	3,611.5	8.2	14.6	173.22	-707.6	-578.5	1,201.3	1,188.2	13.08	91.811 SF		

Cathedral Energy Services

Anticollision Report

Company:	Berry Petroleum Company (NAD 83)	Local Co-ordinate Reference:	Well Chevron 6-23D
Project:	Garfield County	TVD Reference:	KBE @ 8244.0ft (Original Well Elev)
Reference Site:	Sec 6 T6S R96W (F06 696)	MD Reference:	KBE @ 8244.0ft (Original Well Elev)
Site Error:	0.0ft	North Reference:	True
Reference Well:	Chevron 6-23D	Survey Calculation Method:	Minimum Curvature
Well Error:	0.0ft	Output errors are at	2.00 sigma
Reference Wellbore	DD	Database:	EDM 5000.1 US Multi Users DB
Reference Design:	Plan #2	Offset TVD Reference:	Offset Datum

Offset Design Sec 6 T6S R96W (F06 696) - Chevron 6-33D - DD - Plan #2													Offset Site Error:	0.0 ft
Survey Program: 0-MWD													Offset Well Error:	0.0 ft
Reference		Offset		Semi Major Axis			Distance				Total Uncertainty Axis	Separation Factor	Warning	
Measured Depth (ft)	Vertical Depth (ft)	Measured Depth (ft)	Vertical Depth (ft)	Reference (ft)	Offset (ft)	Highside Toolface (°)	Offset Wellbore Centre +N/-S (ft)	+E/-W (ft)	Between Centres (ft)	Between Ellipses (ft)				
0.0	0.0	0.0	0.0	0.0	0.0	-143.27	-131.5	-98.1	164.1					
100.0	100.0	100.0	100.0	0.1	0.1	-143.27	-131.5	-98.1	164.1	163.8	0.27	602.576		
200.0	200.0	200.0	200.0	0.3	0.3	-143.27	-131.5	-98.1	164.1	163.4	0.62	264.050 CC, ES		
300.0	300.0	300.0	300.0	0.5	0.5	169.06	-131.5	-98.1	165.8	164.8	0.97	170.875		
400.0	399.8	394.3	394.3	0.7	0.7	169.47	-132.5	-99.3	172.5	171.2	1.31	131.791		
500.0	499.6	487.9	487.8	0.9	0.8	170.16	-135.4	-102.8	184.3	182.7	1.65	111.847		
600.0	599.3	580.6	580.2	1.1	1.0	170.95	-140.3	-108.6	199.3	197.3	1.99	100.356		
700.0	699.1	672.4	671.3	1.3	1.3	171.78	-147.0	-116.6	217.5	215.2	2.32	93.629		
800.0	798.8	762.9	760.9	1.5	1.5	172.59	-155.5	-126.7	238.8	236.1	2.66	89.847		
900.0	898.6	852.2	848.7	1.7	1.8	173.36	-165.6	-138.8	263.1	260.1	2.99	88.043		
1,000.0	998.3	946.0	940.7	1.9	2.2	174.11	-177.6	-153.1	289.7	286.4	3.33	87.081		
1,100.0	1,098.1	1,042.3	1,035.0	2.2	2.5	174.75	-190.0	-167.9	316.5	312.9	3.67	86.276		
1,200.0	1,197.8	1,138.6	1,129.4	2.4	2.9	175.30	-202.4	-182.7	343.4	339.3	4.01	85.626		
1,300.0	1,297.5	1,234.9	1,223.7	2.6	3.2	175.76	-214.8	-197.5	370.2	365.9	4.35	85.092		
1,400.0	1,397.3	1,331.1	1,318.0	2.8	3.6	176.16	-227.3	-212.3	397.1	392.4	4.69	84.645		
1,500.0	1,497.0	1,427.4	1,412.3	3.0	4.0	176.51	-239.7	-227.2	424.0	419.0	5.03	84.266		
1,600.0	1,596.8	1,523.7	1,506.7	3.2	4.4	176.82	-252.1	-242.0	450.9	445.5	5.37	83.941		
1,700.0	1,696.5	1,620.0	1,601.0	3.4	4.7	177.09	-264.5	-256.8	477.8	472.1	5.71	83.659		
1,800.0	1,796.3	1,716.3	1,695.3	3.7	5.1	177.34	-276.9	-271.6	504.7	498.7	6.05	83.411		
1,900.0	1,896.0	1,812.6	1,789.6	3.9	5.5	177.56	-289.3	-286.4	531.7	525.3	6.39	83.193		
2,000.0	1,995.8	1,908.9	1,884.0	4.1	5.9	177.75	-301.8	-301.2	558.6	551.9	6.73	82.999		
2,100.0	2,095.5	2,005.1	1,978.3	4.3	6.2	177.93	-314.2	-316.0	585.6	578.5	7.07	82.825		
2,200.0	2,195.3	2,101.4	2,072.6	4.5	6.6	178.10	-326.6	-330.8	612.5	605.1	7.41	82.668		
2,300.0	2,295.0	2,197.7	2,167.0	4.7	7.0	178.25	-339.0	-345.6	639.5	631.7	7.75	82.526		
2,400.0	2,394.7	2,294.0	2,261.3	4.9	7.4	178.39	-351.4	-360.4	666.4	658.3	8.09	82.396		
2,500.0	2,494.5	2,390.3	2,355.6	5.2	7.7	178.51	-363.8	-375.2	693.4	685.0	8.43	82.278		
2,600.0	2,594.2	2,486.6	2,449.9	5.4	8.1	178.63	-376.3	-390.0	720.3	711.6	8.77	82.169		
2,700.0	2,694.0	2,582.9	2,544.3	5.6	8.5	178.74	-388.7	-404.9	747.3	738.2	9.11	82.069		
2,800.0	2,793.7	2,679.1	2,638.6	5.8	8.9	178.84	-401.1	-419.7	774.3	764.8	9.45	81.976		
2,900.0	2,893.5	2,775.4	2,732.9	6.0	9.3	178.94	-413.5	-434.5	801.3	791.5	9.78	81.890		
3,000.0	2,993.2	2,871.7	2,827.2	6.2	9.6	179.03	-425.9	-449.3	828.2	818.1	10.12	81.810		
3,100.0	3,093.0	2,968.0	2,921.6	6.4	10.0	179.11	-438.3	-464.1	855.2	844.7	10.46	81.736		
3,200.0	3,192.7	3,064.3	3,015.9	6.7	10.4	179.19	-450.8	-478.9	882.2	871.4	10.80	81.666		
3,300.0	3,292.5	3,160.6	3,110.2	6.9	10.8	179.26	-463.2	-493.7	909.2	898.0	11.14	81.601		
3,400.0	3,392.2	3,256.9	3,204.5	7.1	11.2	179.33	-475.6	-508.5	936.1	924.7	11.48	81.540		
3,500.0	3,491.9	3,353.1	3,298.9	7.3	11.5	179.40	-488.0	-523.3	963.1	951.3	11.82	81.482		
3,600.0	3,591.7	3,449.4	3,393.2	7.5	11.9	179.46	-500.4	-538.1	990.1	977.9	12.16	81.428		
3,700.0	3,691.4	3,545.7	3,487.5	7.7	12.3	179.52	-512.8	-552.9	1,017.1	1,004.6	12.50	81.377		
3,800.0	3,791.2	3,642.0	3,581.8	7.9	12.7	179.57	-525.3	-567.7	1,044.1	1,031.2	12.84	81.328		
3,900.0	3,890.9	3,738.3	3,676.2	8.2	13.1	179.63	-537.7	-582.6	1,071.1	1,057.9	13.18	81.282		
4,000.0	3,990.7	3,834.6	3,770.5	8.4	13.4	179.68	-550.1	-597.4	1,098.0	1,084.5	13.52	81.239		
4,100.0	4,090.4	3,930.9	3,864.8	8.6	13.8	179.72	-562.5	-612.2	1,125.0	1,111.2	13.86	81.197		
4,200.0	4,190.2	4,027.1	3,959.2	8.8	14.2	179.77	-574.9	-627.0	1,152.0	1,137.8	14.19	81.158		
4,300.0	4,289.9	4,123.4	4,053.5	9.0	14.6	179.81	-587.3	-641.8	1,179.0	1,164.5	14.53	81.120		
4,400.0	4,389.7	4,219.7	4,147.8	9.2	15.0	179.85	-599.8	-656.6	1,206.0	1,191.1	14.87	81.084 SF		

Cathedral Energy Services

Anticollision Report

Company:	Berry Petroleum Company (NAD 83)	Local Co-ordinate Reference:	Well Chevron 6-23D
Project:	Garfield County	TVD Reference:	KBE @ 8244.0ft (Original Well Elev)
Reference Site:	Sec 6 T6S R96W (F06 696)	MD Reference:	KBE @ 8244.0ft (Original Well Elev)
Site Error:	0.0ft	North Reference:	True
Reference Well:	Chevron 6-23D	Survey Calculation Method:	Minimum Curvature
Well Error:	0.0ft	Output errors are at	2.00 sigma
Reference Wellbore	DD	Database:	EDM 5000.1 US Multi Users DB
Reference Design:	Plan #2	Offset TVD Reference:	Offset Datum

Offset Design Sec 6 T6S R96W (F06 696) - Chevron 6-34D - DD - Plan #2													Offset Site Error:	0.0 ft
Survey Program: O-MWD													Offset Well Error:	0.0 ft
Reference		Offset		Semi Major Axis			Distance				Total	Separation	Warning	
Measured Depth (ft)	Vertical Depth (ft)	Measured Depth (ft)	Vertical Depth (ft)	Reference (ft)	Offset (ft)	Highside Toolface (°)	Offset Wellbore Centre +N/-S (ft)	+E/-W (ft)	Between Centres (ft)	Between Ellipses (ft)	Uncertainty Axis	Factor		
0.0	0.0	0.0	0.0	0.0	0.0	-143.28	-119.5	-89.1	149.0					
100.0	100.0	100.0	100.0	0.1	0.1	-143.28	-119.5	-89.1	149.0	148.8	0.27	547.375		
200.0	200.0	200.0	200.0	0.3	0.3	-143.28	-119.5	-89.1	149.0	148.4	0.62	239.861	CC, ES	
300.0	300.0	300.0	300.0	0.5	0.5	169.06	-119.5	-89.1	150.7	149.8	0.97	155.383		
400.0	399.8	399.8	399.8	0.7	0.7	169.40	-119.5	-89.1	155.9	154.6	1.32	118.226		
500.0	499.6	499.6	499.6	0.9	0.8	169.86	-119.5	-89.1	162.9	161.2	1.67	97.674		
600.0	599.3	594.2	594.2	1.1	1.0	170.47	-120.2	-90.5	171.4	169.4	2.01	85.356		
700.0	699.1	688.1	688.0	1.3	1.2	171.40	-122.4	-94.5	183.0	180.6	2.35	77.917		
800.0	798.8	781.2	780.7	1.5	1.4	172.54	-126.0	-101.2	197.6	194.9	2.69	73.495		
900.0	898.6	873.3	872.2	1.7	1.6	173.80	-131.0	-110.5	215.3	212.3	3.03	71.076		
1,000.0	998.3	964.2	962.2	1.9	1.8	175.10	-137.3	-122.1	236.1	232.7	3.37	70.060	SF	
1,100.0	1,098.1	1,054.1	1,050.7	2.2	2.1	176.38	-144.9	-136.1	259.9	256.2	3.71	70.107		
1,200.0	1,197.8	1,150.7	1,145.5	2.4	2.4	177.61	-153.7	-152.3	285.1	281.1	4.06	70.261		
1,300.0	1,297.5	1,247.3	1,240.3	2.6	2.8	178.64	-162.4	-168.5	310.5	306.1	4.41	70.449		
1,400.0	1,397.3	1,343.9	1,335.2	2.8	3.1	179.52	-171.2	-184.6	335.9	331.1	4.76	70.639		
1,500.0	1,497.0	1,440.5	1,430.0	3.0	3.4	-179.73	-180.0	-200.8	361.4	356.3	5.10	70.827		
1,600.0	1,596.8	1,537.1	1,524.8	3.2	3.8	-179.07	-188.8	-217.0	386.9	381.5	5.45	71.008		
1,700.0	1,696.5	1,633.7	1,619.6	3.4	4.2	-178.50	-197.5	-233.2	412.5	406.7	5.79	71.183		
1,800.0	1,796.3	1,730.3	1,714.5	3.7	4.5	-177.99	-206.3	-249.4	438.1	432.0	6.14	71.349		
1,900.0	1,896.0	1,826.9	1,809.3	3.9	4.9	-177.54	-215.1	-265.6	463.7	457.3	6.49	71.506		
2,000.0	1,995.8	1,923.5	1,904.1	4.1	5.2	-177.14	-223.8	-281.8	489.4	482.6	6.83	71.655		
2,100.0	2,095.5	2,020.1	1,998.9	4.3	5.6	-176.78	-232.6	-298.0	515.1	507.9	7.17	71.795		
2,200.0	2,195.3	2,116.7	2,093.8	4.5	5.9	-176.45	-241.4	-314.2	540.8	533.3	7.52	71.927		
2,300.0	2,295.0	2,213.3	2,188.6	4.7	6.3	-176.15	-250.1	-330.4	566.5	558.7	7.86	72.051		
2,400.0	2,394.7	2,309.9	2,283.4	4.9	6.7	-175.88	-258.9	-346.6	592.2	584.0	8.21	72.168		
2,500.0	2,494.5	2,406.5	2,378.2	5.2	7.0	-175.63	-267.7	-362.8	618.0	609.4	8.55	72.278		
2,600.0	2,594.2	2,503.1	2,473.1	5.4	7.4	-175.40	-276.5	-378.9	643.7	634.8	8.89	72.381		
2,700.0	2,694.0	2,599.7	2,567.9	5.6	7.8	-175.19	-285.2	-395.1	669.5	660.3	9.24	72.479		
2,800.0	2,793.7	2,696.3	2,662.7	5.8	8.1	-174.99	-294.0	-411.3	695.3	685.7	9.58	72.572		
2,900.0	2,893.5	2,792.9	2,757.5	6.0	8.5	-174.81	-302.8	-427.5	721.0	711.1	9.92	72.659		
3,000.0	2,993.2	2,889.5	2,852.4	6.2	8.8	-174.64	-311.5	-443.7	746.8	736.6	10.27	72.741		
3,100.0	3,093.0	2,986.1	2,947.2	6.4	9.2	-174.48	-320.3	-459.9	772.6	762.0	10.61	72.819		
3,200.0	3,192.7	3,082.7	3,042.0	6.7	9.6	-174.33	-329.1	-476.1	798.4	787.5	10.95	72.893		
3,300.0	3,292.5	3,179.3	3,136.8	6.9	9.9	-174.19	-337.8	-492.3	824.2	812.9	11.30	72.963		
3,400.0	3,392.2	3,275.9	3,231.7	7.1	10.3	-174.06	-346.6	-508.5	850.0	838.4	11.64	73.030		
3,500.0	3,491.9	3,372.4	3,326.5	7.3	10.7	-173.94	-355.4	-524.7	875.8	863.8	11.98	73.093		
3,600.0	3,591.7	3,469.0	3,421.3	7.5	11.0	-173.82	-364.1	-540.9	901.6	889.3	12.33	73.154		
3,700.0	3,691.4	3,565.6	3,516.1	7.7	11.4	-173.71	-372.9	-557.0	927.4	914.8	12.67	73.211		
3,800.0	3,791.2	3,662.2	3,611.0	7.9	11.8	-173.61	-381.7	-573.2	953.3	940.2	13.01	73.266		
3,900.0	3,890.9	3,758.8	3,705.8	8.2	12.1	-173.51	-390.5	-589.4	979.1	965.7	13.35	73.318		
4,000.0	3,990.7	3,855.4	3,800.6	8.4	12.5	-173.42	-399.2	-605.6	1,004.9	991.2	13.70	73.368		
4,100.0	4,090.4	3,952.0	3,895.4	8.6	12.9	-173.33	-408.0	-621.8	1,030.7	1,016.7	14.04	73.416		
4,200.0	4,190.2	4,048.6	3,990.3	8.8	13.2	-173.24	-416.8	-638.0	1,056.5	1,042.2	14.38	73.462		
4,300.0	4,289.9	4,145.2	4,085.1	9.0	13.6	-173.16	-425.5	-654.2	1,082.4	1,067.6	14.73	73.506		
4,400.0	4,389.7	4,241.8	4,179.9	9.2	14.0	-173.09	-434.3	-670.4	1,108.2	1,093.1	15.07	73.548		
4,500.0	4,489.4	4,338.4	4,274.7	9.4	14.3	-173.01	-443.1	-686.6	1,134.0	1,118.6	15.41	73.588		
4,600.0	4,589.1	4,435.0	4,369.6	9.7	14.7	-172.95	-451.8	-702.8	1,159.9	1,144.1	15.75	73.627		
4,700.0	4,688.9	4,531.6	4,464.4	9.9	15.1	-172.88	-460.6	-719.0	1,185.7	1,169.6	16.10	73.664		
4,800.0	4,788.6	4,628.2	4,559.2	10.1	15.4	-172.82	-469.4	-735.1	1,211.5	1,195.1	16.44	73.699		

CC - Min centre to center distance or convergent point, SF - min separation factor, ES - min ellipse separation

Cathedral Energy Services

Anticollision Report

Company:	Berry Petroleum Company (NAD 83)	Local Co-ordinate Reference:	Well Chevron 6-23D
Project:	Garfield County	TVD Reference:	KBE @ 8244.0ft (Original Well Elev)
Reference Site:	Sec 6 T6S R96W (F06 696)	MD Reference:	KBE @ 8244.0ft (Original Well Elev)
Site Error:	0.0ft	North Reference:	True
Reference Well:	Chevron 6-23D	Survey Calculation Method:	Minimum Curvature
Well Error:	0.0ft	Output errors are at	2.00 sigma
Reference Wellbore	DD	Database:	EDM 5000.1 US Multi Users DB
Reference Design:	Plan #2	Offset TVD Reference:	Offset Datum

Offset Design Sec 6 T6S R96W (F06 696) - Chevron 6-35D - DD - Plan #2													Offset Site Error:	0.0 ft
Survey Program: 0-MWD													Offset Well Error:	0.0 ft
Reference		Offset		Semi Major Axis		Distance		Total		Separation		Warning		
Measured Depth (ft)	Vertical Depth (ft)	Measured Depth (ft)	Vertical Depth (ft)	Reference (ft)	Offset (ft)	Highside Toolface (°)	Offset Wellbore Centre +N/-S (ft)	+E/-W (ft)	Between Centres (ft)	Between Ellipses (ft)	Uncertainty Axis	Factor		
0.0	0.0	0.0	0.0	0.0	0.0	-143.30	-107.4	-80.1	134.0					
100.0	100.0	100.0	100.0	0.1	0.1	-143.30	-107.4	-80.1	134.0	133.7	0.27	492.174		
200.0	200.0	200.0	200.0	0.3	0.3	-143.30	-107.4	-80.1	134.0	133.4	0.62	215.672 CC, ES		
300.0	300.0	300.0	300.0	0.5	0.5	169.05	-107.4	-80.1	135.7	134.7	0.97	139.891		
400.0	399.8	396.3	396.2	0.7	0.7	169.85	-107.8	-81.7	142.1	140.8	1.31	108.207		
500.0	499.6	491.8	491.7	0.9	0.8	171.50	-108.7	-86.4	153.0	151.3	1.66	92.096		
600.0	599.3	586.6	586.1	1.1	1.0	173.59	-110.2	-94.1	166.6	164.5	2.01	82.666		
700.0	699.1	680.3	679.2	1.3	1.3	175.94	-112.3	-104.8	183.0	180.6	2.37	77.054		
800.0	798.8	772.9	770.7	1.5	1.6	178.36	-115.0	-118.3	202.4	199.7	2.74	73.915		
900.0	898.6	869.4	865.9	1.7	1.9	-179.29	-118.1	-134.2	223.8	220.7	3.11	71.983		
1,000.0	998.3	966.7	961.8	1.9	2.2	-177.33	-121.3	-150.3	245.6	242.1	3.48	70.592		
1,100.0	1,098.1	1,064.0	1,057.7	2.2	2.5	-175.69	-124.5	-166.4	267.5	263.7	3.85	69.574		
1,200.0	1,197.8	1,161.3	1,153.6	2.4	2.8	-174.30	-127.6	-182.4	289.7	285.5	4.21	68.812		
1,300.0	1,297.5	1,258.6	1,249.5	2.6	3.1	-173.10	-130.8	-198.5	312.0	307.4	4.57	68.230		
1,400.0	1,397.3	1,355.9	1,345.4	2.8	3.5	-172.07	-134.0	-214.6	334.4	329.4	4.93	67.778		
1,500.0	1,497.0	1,453.2	1,441.3	3.0	3.8	-171.16	-137.2	-230.7	356.8	351.6	5.29	67.420		
1,600.0	1,596.8	1,550.5	1,537.2	3.2	4.1	-170.36	-140.3	-246.7	379.4	373.8	5.65	67.132		
1,700.0	1,696.5	1,647.8	1,633.1	3.4	4.5	-169.65	-143.5	-262.8	402.0	396.0	6.01	66.898		
1,800.0	1,796.3	1,745.1	1,729.0	3.7	4.8	-169.02	-146.7	-278.9	424.7	418.4	6.37	66.706		
1,900.0	1,896.0	1,842.4	1,824.9	3.9	5.1	-168.45	-149.8	-295.0	447.4	440.7	6.72	66.546		
2,000.0	1,995.8	1,939.7	1,920.9	4.1	5.5	-167.94	-153.0	-311.0	470.2	463.1	7.08	66.412		
2,100.0	2,095.5	2,036.9	2,016.8	4.3	5.8	-167.47	-156.2	-327.1	493.0	485.6	7.44	66.298		
2,200.0	2,195.3	2,134.2	2,112.7	4.5	6.1	-167.04	-159.4	-343.2	515.8	508.0	7.79	66.201		
2,300.0	2,295.0	2,231.5	2,208.6	4.7	6.5	-166.65	-162.5	-359.3	538.7	530.5	8.15	66.117		
2,400.0	2,394.7	2,328.8	2,304.5	4.9	6.8	-166.30	-165.7	-375.3	561.6	553.0	8.50	66.045		
2,500.0	2,494.5	2,426.1	2,400.4	5.2	7.1	-165.97	-168.9	-391.4	584.4	575.6	8.86	65.982		
2,600.0	2,594.2	2,523.4	2,496.3	5.4	7.5	-165.66	-172.0	-407.5	607.3	598.1	9.21	65.927		
2,700.0	2,694.0	2,620.7	2,592.2	5.6	7.8	-165.38	-175.2	-423.6	630.3	620.7	9.57	65.878		
2,800.0	2,793.7	2,718.0	2,688.1	5.8	8.1	-165.12	-178.4	-439.6	653.2	643.3	9.92	65.835		
2,900.0	2,893.5	2,815.3	2,784.0	6.0	8.5	-164.87	-181.6	-455.7	676.2	665.9	10.28	65.796		
3,000.0	2,993.2	2,912.6	2,879.9	6.2	8.8	-164.64	-184.7	-471.8	699.1	688.5	10.63	65.762		
3,100.0	3,093.0	3,009.9	2,975.8	6.4	9.1	-164.43	-187.9	-487.9	722.1	711.1	10.99	65.731		
3,200.0	3,192.7	3,107.2	3,071.7	6.7	9.5	-164.23	-191.1	-503.9	745.1	733.7	11.34	65.704		
3,300.0	3,292.5	3,204.5	3,167.6	6.9	9.8	-164.04	-194.2	-520.0	768.0	756.3	11.69	65.679		
3,400.0	3,392.2	3,301.7	3,263.5	7.1	10.1	-163.86	-197.4	-536.1	791.0	779.0	12.05	65.656		
3,500.0	3,491.9	3,399.0	3,359.4	7.3	10.5	-163.69	-200.6	-552.2	814.0	801.6	12.40	65.635		
3,600.0	3,591.7	3,496.3	3,455.3	7.5	10.8	-163.53	-203.8	-568.2	837.0	824.3	12.76	65.617		
3,700.0	3,691.4	3,593.6	3,551.2	7.7	11.1	-163.38	-206.9	-584.3	860.1	846.9	13.11	65.600		
3,800.0	3,791.2	3,690.9	3,647.1	7.9	11.5	-163.24	-210.1	-600.4	883.1	869.6	13.46	65.584		
3,900.0	3,890.9	3,788.2	3,743.0	8.2	11.8	-163.10	-213.3	-616.5	906.1	892.3	13.82	65.569		
4,000.0	3,990.7	3,885.5	3,838.9	8.4	12.1	-162.97	-216.4	-632.5	929.1	914.9	14.17	65.556		
4,100.0	4,090.4	3,982.8	3,934.8	8.6	12.5	-162.85	-219.6	-648.6	952.1	937.6	14.53	65.544		
4,200.0	4,190.2	4,080.1	4,030.7	8.8	12.8	-162.73	-222.8	-664.7	975.2	960.3	14.88	65.532		
4,300.0	4,289.9	4,177.4	4,126.6	9.0	13.2	-162.62	-226.0	-680.8	998.2	983.0	15.24	65.522		
4,400.0	4,389.7	4,274.7	4,222.5	9.2	13.5	-162.52	-229.1	-696.8	1,021.3	1,005.7	15.59	65.512		
4,500.0	4,489.4	4,372.0	4,318.4	9.4	13.8	-162.41	-232.3	-712.9	1,044.3	1,028.4	15.94	65.503		
4,600.0	4,589.1	4,469.2	4,414.3	9.7	14.2	-162.32	-235.5	-729.0	1,067.4	1,051.1	16.30	65.494		
4,700.0	4,688.9	4,566.5	4,510.2	9.9	14.5	-162.22	-238.6	-745.1	1,090.4	1,073.8	16.65	65.486		
4,800.0	4,788.6	4,663.8	4,606.1	10.1	14.8	-162.14	-241.8	-761.1	1,113.5	1,096.5	17.00	65.479		
4,900.0	4,888.4	4,761.1	4,702.0	10.3	15.2	-162.05	-245.0	-777.2	1,136.5	1,119.2	17.36	65.472		
5,000.0	4,988.1	4,858.4	4,797.9	10.5	15.5	-161.97	-248.2	-793.3	1,159.6	1,141.9	17.71	65.465		
5,100.0	5,087.9	4,955.7	4,893.8	10.7	15.8	-161.89	-251.3	-809.4	1,182.6	1,164.6	18.07	65.459		

CC - Min centre to center distance or convergent point, SF - min separation factor, ES - min ellipse separation

Cathedral Energy Services

Anticollision Report

Company:	Berry Petroleum Company (NAD 83)	Local Co-ordinate Reference:	Well Chevron 6-23D
Project:	Garfield County	TVD Reference:	KBE @ 8244.0ft (Original Well Elev)
Reference Site:	Sec 6 T6S R96W (F06 696)	MD Reference:	KBE @ 8244.0ft (Original Well Elev)
Site Error:	0.0ft	North Reference:	True
Reference Well:	Chevron 6-23D	Survey Calculation Method:	Minimum Curvature
Well Error:	0.0ft	Output errors are at	2.00 sigma
Reference Wellbore	DD	Database:	EDM 5000.1 US Multi Users DB
Reference Design:	Plan #2	Offset TVD Reference:	Offset Datum

Offset Design Sec 6 T6S R96W (F06 696) - Chevron 6-35D - DD - Plan #2													Offset Site Error:	0.0 ft
Survey Program: 0-MWD													Offset Well Error:	0.0 ft
Reference		Offset		Semi Major Axis			Distance							
Measured Depth (ft)	Vertical Depth (ft)	Measured Depth (ft)	Vertical Depth (ft)	Reference (ft)	Offset (ft)	Highside Toolface (°)	Offset Wellbore Centre +N/-S (ft)	+E/-W (ft)	Between Centres (ft)	Between Ellipses (ft)	Total Uncertainty Axis	Separation Factor	Warning	
5,200.0	5,187.6	5,053.0	4,989.7	10.9	16.2	-161.81	-254.5	-825.4	1,205.7	1,187.3	18.42	65.453 SF		

Cathedral Energy Services

Anticollision Report

Company:	Berry Petroleum Company (NAD 83)	Local Co-ordinate Reference:	Well Chevron 6-23D
Project:	Garfield County	TVD Reference:	KBE @ 8244.0ft (Original Well Elev)
Reference Site:	Sec 6 T6S R96W (F06 696)	MD Reference:	KBE @ 8244.0ft (Original Well Elev)
Site Error:	0.0ft	North Reference:	True
Reference Well:	Chevron 6-23D	Survey Calculation Method:	Minimum Curvature
Well Error:	0.0ft	Output errors are at	2.00 sigma
Reference Wellbore	DD	Database:	EDM 5000.1 US Multi Users DB
Reference Design:	Plan #2	Offset TVD Reference:	Offset Datum

Offset Design													Offset Site Error:	0.0 ft
Survey Program: 0-MWD													Offset Well Error:	0.0 ft
Reference		Offset		Semi Major Axis		Distance		Total		Separation		Warning		
Measured Depth (ft)	Vertical Depth (ft)	Measured Depth (ft)	Vertical Depth (ft)	Reference (ft)	Offset (ft)	Highside Toolface (°)	Offset Wellbore Centre +N/-S (ft)	+E/-W (ft)	Between Centres (ft)	Between Ellipses (ft)	Uncertainty Axis	Factor		
0.0	0.0	0.0	0.0	0.0	0.0	-143.33	-95.4	-71.1	119.0					
100.0	100.0	100.0	100.0	0.1	0.1	-143.33	-95.4	-71.1	119.0	118.7	0.27	436.973		
200.0	200.0	200.0	200.0	0.3	0.3	-143.33	-95.4	-71.1	119.0	118.4	0.62	191.483 CC, ES		
300.0	300.0	297.7	297.7	0.5	0.5	169.70	-95.3	-72.7	121.6	120.6	0.97	125.526		
400.0	399.8	394.9	394.7	0.7	0.7	171.92	-94.9	-77.7	129.7	128.3	1.33	97.836		
500.0	499.6	491.1	490.6	0.9	0.9	175.02	-94.3	-85.8	141.8	140.1	1.70	83.626		
600.0	599.3	586.4	585.2	1.1	1.1	178.50	-93.5	-97.0	156.6	154.5	2.08	75.243		
700.0	699.1	681.4	679.1	1.3	1.4	-177.88	-92.4	-111.2	174.1	171.6	2.47	70.419		
800.0	798.8	779.1	775.5	1.5	1.7	-174.65	-91.2	-126.8	192.9	190.0	2.87	67.302		
900.0	898.6	876.7	872.0	1.7	2.0	-172.00	-90.0	-142.3	212.2	208.9	3.25	65.190		
1,000.0	998.3	974.4	968.4	1.9	2.4	-169.78	-88.8	-157.9	231.8	228.2	3.64	63.703		
1,100.0	1,098.1	1,072.1	1,064.8	2.2	2.7	-167.92	-87.6	-173.4	251.8	247.8	4.02	62.623		
1,200.0	1,197.8	1,169.8	1,161.3	2.4	3.0	-166.33	-86.4	-189.0	272.0	267.6	4.40	61.818		
1,300.0	1,297.5	1,267.5	1,257.7	2.6	3.3	-164.95	-85.3	-204.5	292.3	287.5	4.78	61.204		
1,400.0	1,397.3	1,365.1	1,354.1	2.8	3.6	-163.76	-84.1	-220.1	312.8	307.7	5.15	60.727		
1,500.0	1,497.0	1,462.8	1,450.6	3.0	3.9	-162.71	-82.9	-235.6	333.4	327.9	5.52	60.349		
1,600.0	1,596.8	1,560.5	1,547.0	3.2	4.3	-161.79	-81.7	-251.2	354.1	348.2	5.90	60.047		
1,700.0	1,696.5	1,658.2	1,643.4	3.4	4.6	-160.96	-80.5	-266.7	374.9	368.6	6.27	59.800		
1,800.0	1,796.3	1,755.9	1,739.8	3.7	4.9	-160.23	-79.3	-282.3	395.7	389.1	6.64	59.598		
1,900.0	1,896.0	1,853.6	1,836.3	3.9	5.2	-159.56	-78.2	-297.8	416.6	409.6	7.01	59.429		
2,000.0	1,995.8	1,951.2	1,932.7	4.1	5.6	-158.96	-77.0	-313.4	437.6	430.2	7.38	59.288		
2,100.0	2,095.5	2,048.9	2,029.1	4.3	5.9	-158.42	-75.8	-328.9	458.6	450.8	7.75	59.168		
2,200.0	2,195.3	2,146.6	2,125.6	4.5	6.2	-157.92	-74.6	-344.5	479.6	471.5	8.12	59.066		
2,300.0	2,295.0	2,244.3	2,222.0	4.7	6.5	-157.47	-73.4	-360.0	500.7	492.2	8.49	58.978		
2,400.0	2,394.7	2,342.0	2,318.4	4.9	6.9	-157.05	-72.2	-375.6	521.8	512.9	8.86	58.902		
2,500.0	2,494.5	2,439.7	2,414.9	5.2	7.2	-156.66	-71.0	-391.1	542.9	533.6	9.23	58.836		
2,600.0	2,594.2	2,537.3	2,511.3	5.4	7.5	-156.30	-69.9	-406.7	564.0	554.4	9.60	58.779		
2,700.0	2,694.0	2,635.0	2,607.7	5.6	7.8	-155.97	-68.7	-422.2	585.2	575.2	9.96	58.728		
2,800.0	2,793.7	2,732.7	2,704.1	5.8	8.1	-155.66	-67.5	-437.8	606.3	596.0	10.33	58.683		
2,900.0	2,893.5	2,830.4	2,800.6	6.0	8.5	-155.37	-66.3	-453.4	627.5	616.8	10.70	58.644		
3,000.0	2,993.2	2,928.1	2,897.0	6.2	8.8	-155.11	-65.1	-468.9	648.7	637.6	11.07	58.608		
3,100.0	3,093.0	3,025.8	2,993.4	6.4	9.1	-154.85	-63.9	-484.5	669.9	658.5	11.44	58.577		
3,200.0	3,192.7	3,123.4	3,089.9	6.7	9.4	-154.62	-62.7	-500.0	691.1	679.3	11.80	58.548		
3,300.0	3,292.5	3,221.1	3,186.3	6.9	9.8	-154.39	-61.6	-515.6	712.4	700.2	12.17	58.523		
3,400.0	3,392.2	3,318.8	3,282.7	7.1	10.1	-154.18	-60.4	-531.1	733.6	721.1	12.54	58.500		
3,500.0	3,491.9	3,416.5	3,379.2	7.3	10.4	-153.99	-59.2	-546.7	754.9	742.0	12.91	58.479		
3,600.0	3,591.7	3,514.2	3,475.6	7.5	10.7	-153.80	-58.0	-562.2	776.1	762.9	13.28	58.460		
3,700.0	3,691.4	3,611.9	3,572.0	7.7	11.1	-153.62	-56.8	-577.8	797.4	783.8	13.64	58.443		
3,800.0	3,791.2	3,709.5	3,668.4	7.9	11.4	-153.46	-55.6	-593.3	818.7	804.7	14.01	58.427		
3,900.0	3,890.9	3,807.2	3,764.9	8.2	11.7	-153.30	-54.5	-608.9	840.0	825.6	14.38	58.413		
4,000.0	3,990.7	3,904.9	3,861.3	8.4	12.0	-153.14	-53.3	-624.4	861.3	846.5	14.75	58.399		
4,100.0	4,090.4	4,002.6	3,957.7	8.6	12.4	-153.00	-52.1	-640.0	882.6	867.4	15.12	58.387		
4,200.0	4,190.2	4,100.3	4,054.2	8.8	12.7	-152.86	-50.9	-655.5	903.9	888.4	15.48	58.376		
4,300.0	4,289.9	4,198.0	4,150.6	9.0	13.0	-152.73	-49.7	-671.1	925.2	909.3	15.85	58.366		
4,400.0	4,389.7	4,295.6	4,247.0	9.2	13.3	-152.61	-48.5	-686.6	946.5	930.3	16.22	58.356		
4,500.0	4,489.4	4,393.3	4,343.4	9.4	13.6	-152.49	-47.3	-702.2	967.8	951.2	16.59	58.347		
4,600.0	4,589.1	4,491.0	4,439.9	9.7	14.0	-152.37	-46.2	-717.7	989.1	972.1	16.95	58.339		
4,700.0	4,688.9	4,588.7	4,536.3	9.9	14.3	-152.26	-45.0	-733.3	1,010.4	993.1	17.32	58.332		
4,800.0	4,788.6	4,686.4	4,632.7	10.1	14.6	-152.16	-43.8	-748.8	1,031.7	1,014.1	17.69	58.325		
4,900.0	4,888.4	4,784.1	4,729.2	10.3	14.9	-152.06	-42.6	-764.4	1,053.1	1,035.0	18.06	58.318		
5,000.0	4,988.1	4,881.7	4,825.6	10.5	15.3	-151.96	-41.4	-780.0	1,074.4	1,056.0	18.43	58.312		
5,100.0	5,087.9	4,979.4	4,922.0	10.7	15.6	-151.87	-40.2	-795.5	1,095.7	1,076.9	18.79	58.306		

CC - Min centre to center distance or convergent point, SF - min separation factor, ES - min ellipse separation

Cathedral Energy Services

Anticollision Report

Company:	Berry Petroleum Company (NAD 83)	Local Co-ordinate Reference:	Well Chevron 6-23D
Project:	Garfield County	TVD Reference:	KBE @ 8244.0ft (Original Well Elev)
Reference Site:	Sec 6 T6S R96W (F06 696)	MD Reference:	KBE @ 8244.0ft (Original Well Elev)
Site Error:	0.0ft	North Reference:	True
Reference Well:	Chevron 6-23D	Survey Calculation Method:	Minimum Curvature
Well Error:	0.0ft	Output errors are at	2.00 sigma
Reference Wellbore	DD	Database:	EDM 5000.1 US Multi Users DB
Reference Design:	Plan #2	Offset TVD Reference:	Offset Datum

Offset Design													Sec 6 T6S R96W (F06 696) - Chevron 6-36D - DD - Plan #2		Offset Site Error:		0.0 ft	
Survey Program:													0-MWD		Offset Well Error:		0.0 ft	
Reference		Offset		Semi Major Axis			Distance							Warning				
Measured Depth	Vertical Depth	Measured Depth	Vertical Depth	Reference	Offset	Highside Toolface	Offset Wellbore Centre		Between Centres	Between Ellipses	Total Uncertainty Axis	Separation Factor						
(ft)	(ft)	(ft)	(ft)	(ft)	(ft)	(°)	+N/-S (ft)	+E/-W (ft)	(ft)	(ft)								
5,200.0	5,187.6	5,077.1	5,018.5	10.9	15.9	-151.78	-39.1	-811.1	1,117.1	1,097.9	19.16	58.301						
5,300.0	5,287.4	5,174.8	5,114.9	11.2	16.2	-151.69	-37.9	-826.6	1,138.4	1,118.9	19.53	58.296						
5,400.0	5,387.1	5,272.5	5,211.3	11.4	16.6	-151.61	-36.7	-842.2	1,159.7	1,139.8	19.90	58.291						
5,500.0	5,486.9	5,370.2	5,307.7	11.6	16.9	-151.53	-35.5	-857.7	1,181.1	1,160.8	20.26	58.287						
5,600.0	5,586.6	5,467.8	5,404.2	11.8	17.2	-151.45	-34.3	-873.3	1,202.4	1,181.8	20.63	58.282 SF						

Cathedral Energy Services

Anticollision Report

Company:	Berry Petroleum Company (NAD 83)	Local Co-ordinate Reference:	Well Chevron 6-23D
Project:	Garfield County	TVD Reference:	KBE @ 8244.0ft (Original Well Elev)
Reference Site:	Sec 6 T6S R96W (F06 696)	MD Reference:	KBE @ 8244.0ft (Original Well Elev)
Site Error:	0.0ft	North Reference:	True
Reference Well:	Chevron 6-23D	Survey Calculation Method:	Minimum Curvature
Well Error:	0.0ft	Output errors are at	2.00 sigma
Reference Wellbore	DD	Database:	EDM 5000.1 US Multi Users DB
Reference Design:	Plan #2	Offset TVD Reference:	Offset Datum

Offset Design Sec 6 T6S R96W (F06 696) - Chevron 6-37D - DD - Plan #2													Offset Site Error: 0.0 ft	
Survey Program: 0-MWD													Offset Well Error: 0.0 ft	
Reference		Offset		Semi Major Axis			Distance							Warning
Measured Depth (ft)	Vertical Depth (ft)	Measured Depth (ft)	Vertical Depth (ft)	Reference (ft)	Offset (ft)	Highside Toolface (°)	Offset Wellbore Centre +N/-S (ft)	+E/-W (ft)	Between Centres (ft)	Between Ellipses (ft)	Total Uncertainty Axis	Separation Factor		
0.0	0.0	0.0	0.0	0.0	0.0	-143.36	-83.4	-62.0	103.9					
100.0	100.0	100.0	100.0	0.1	0.1	-143.36	-83.4	-62.0	103.9	103.7	0.27	381.772		
200.0	200.0	200.0	200.0	0.3	0.3	-143.36	-83.4	-62.0	103.9	103.3	0.62	167.294	CC, ES	
300.0	300.0	300.0	300.0	0.5	0.5	169.03	-83.4	-62.0	105.7	104.7	0.97	108.907		
400.0	399.8	398.6	398.6	0.7	0.7	170.36	-82.8	-63.6	111.3	110.0	1.32	84.419		
500.0	499.6	496.7	496.6	0.9	0.8	173.22	-81.1	-68.4	120.1	118.5	1.68	71.577		
600.0	599.3	594.2	593.6	1.1	1.1	177.01	-78.3	-76.2	130.6	128.5	2.06	63.521		
700.0	699.1	690.7	689.5	1.3	1.3	-178.63	-74.4	-87.1	143.2	140.7	2.46	58.326		
800.0	798.8	786.1	783.8	1.5	1.6	-174.03	-69.5	-100.7	158.3	155.5	2.88	55.047		
900.0	898.6	882.9	879.1	1.7	1.9	-169.57	-63.7	-116.8	175.8	172.5	3.30	53.290		
1,000.0	998.3	980.5	975.1	1.9	2.2	-165.88	-57.8	-133.0	194.3	190.5	3.72	52.225		
1,100.0	1,098.1	1,078.1	1,071.2	2.2	2.6	-162.82	-52.0	-149.3	213.3	209.2	4.13	51.603		
1,200.0	1,197.8	1,175.7	1,167.2	2.4	2.9	-160.27	-46.1	-165.5	232.9	228.4	4.54	51.259		
1,300.0	1,297.5	1,273.2	1,263.2	2.6	3.2	-158.11	-40.3	-181.8	252.8	247.9	4.95	51.092		
1,400.0	1,397.3	1,370.8	1,359.3	2.8	3.6	-156.27	-34.4	-198.1	273.1	267.7	5.35	51.037	SF	
1,500.0	1,497.0	1,468.4	1,455.3	3.0	3.9	-154.69	-28.6	-214.3	293.6	287.8	5.75	51.056		
1,600.0	1,596.8	1,566.0	1,551.3	3.2	4.3	-153.30	-22.7	-230.6	314.2	308.1	6.15	51.121		
1,700.0	1,696.5	1,663.5	1,647.4	3.4	4.6	-152.09	-16.9	-246.8	335.1	328.5	6.54	51.216		
1,800.0	1,796.3	1,761.1	1,743.4	3.7	5.0	-151.03	-11.0	-263.1	356.0	349.1	6.94	51.330		
1,900.0	1,896.0	1,858.7	1,839.4	3.9	5.3	-150.08	-5.2	-279.3	377.1	369.7	7.33	51.455		
2,000.0	1,995.8	1,956.3	1,935.5	4.1	5.7	-149.23	0.7	-295.6	398.2	390.5	7.72	51.585		
2,100.0	2,095.5	2,053.8	2,031.5	4.3	6.0	-148.46	6.5	-311.9	419.4	411.3	8.11	51.718		
2,200.0	2,195.3	2,151.4	2,127.5	4.5	6.4	-147.77	12.4	-328.1	440.7	432.2	8.50	51.850		
2,300.0	2,295.0	2,249.0	2,223.6	4.7	6.7	-147.14	18.2	-344.4	462.1	453.2	8.89	51.980		
2,400.0	2,394.7	2,346.6	2,319.6	4.9	7.1	-146.57	24.1	-360.6	483.4	474.2	9.28	52.108		
2,500.0	2,494.5	2,444.2	2,415.6	5.2	7.4	-146.05	29.9	-376.9	504.9	495.2	9.67	52.232		
2,600.0	2,594.2	2,541.7	2,511.7	5.4	7.7	-145.57	35.8	-393.1	526.3	516.3	10.05	52.352		
2,700.0	2,694.0	2,639.3	2,607.7	5.6	8.1	-145.12	41.6	-409.4	547.8	537.4	10.44	52.468		
2,800.0	2,793.7	2,736.9	2,703.7	5.8	8.4	-144.71	47.5	-425.6	569.4	558.5	10.83	52.579		
2,900.0	2,893.5	2,834.5	2,799.8	6.0	8.8	-144.33	53.3	-441.9	590.9	579.7	11.22	52.687		
3,000.0	2,993.2	2,932.0	2,895.8	6.2	9.1	-143.98	59.2	-458.2	612.5	600.9	11.60	52.790		
3,100.0	3,093.0	3,029.6	2,991.9	6.4	9.5	-143.65	65.0	-474.4	634.1	622.1	11.99	52.889		
3,200.0	3,192.7	3,127.2	3,087.9	6.7	9.8	-143.34	70.9	-490.7	655.7	643.3	12.38	52.984		
3,300.0	3,292.5	3,224.8	3,183.9	6.9	10.2	-143.06	76.7	-506.9	677.4	664.6	12.76	53.075		
3,400.0	3,392.2	3,322.3	3,280.0	7.1	10.5	-142.79	82.6	-523.2	699.0	685.9	13.15	53.163		
3,500.0	3,491.9	3,419.9	3,376.0	7.3	10.9	-142.53	88.4	-539.4	720.7	707.1	13.53	53.247		
3,600.0	3,591.7	3,517.5	3,472.0	7.5	11.2	-142.29	94.3	-555.7	742.3	728.4	13.92	53.328		
3,700.0	3,691.4	3,615.1	3,568.1	7.7	11.6	-142.07	100.1	-572.0	764.0	749.7	14.31	53.405		
3,800.0	3,791.2	3,712.7	3,664.1	7.9	11.9	-141.85	106.0	-588.2	785.7	771.0	14.69	53.480		
3,900.0	3,890.9	3,810.2	3,760.1	8.2	12.3	-141.65	111.8	-604.5	807.4	792.4	15.08	53.552		
4,000.0	3,990.7	3,907.8	3,856.2	8.4	12.6	-141.46	117.7	-620.7	829.2	813.7	15.46	53.620		
4,100.0	4,090.4	4,005.4	3,952.2	8.6	13.0	-141.28	123.5	-637.0	850.9	835.0	15.85	53.687		
4,200.0	4,190.2	4,103.0	4,048.2	8.8	13.3	-141.11	129.4	-653.2	872.6	856.4	16.23	53.751		
4,300.0	4,289.9	4,200.5	4,144.3	9.0	13.7	-140.94	135.3	-669.5	894.4	877.7	16.62	53.812		
4,400.0	4,389.7	4,298.1	4,240.3	9.2	14.0	-140.79	141.1	-685.7	916.1	899.1	17.01	53.871		
4,500.0	4,489.4	4,395.7	4,336.3	9.4	14.4	-140.64	147.0	-702.0	937.9	920.5	17.39	53.928		
4,600.0	4,589.1	4,493.3	4,432.4	9.7	14.7	-140.50	152.8	-718.3	959.6	941.8	17.78	53.983		
4,700.0	4,688.9	4,590.8	4,528.4	9.9	15.1	-140.36	158.7	-734.5	981.4	963.2	18.16	54.036		
4,800.0	4,788.6	4,688.4	4,624.5	10.1	15.4	-140.23	164.5	-750.8	1,003.1	984.6	18.55	54.087		
4,900.0	4,888.4	4,786.0	4,720.5	10.3	15.8	-140.11	170.4	-767.0	1,024.9	1,006.0	18.93	54.137		
5,000.0	4,988.1	4,883.6	4,816.5	10.5	16.1	-139.99	176.2	-783.3	1,046.7	1,027.4	19.32	54.185		
5,100.0	5,087.9	4,981.2	4,912.6	10.7	16.5	-139.87	182.1	-799.5	1,068.5	1,048.8	19.70	54.231		

CC - Min centre to center distance or convergent point, SF - min separation factor, ES - min ellipse separation

Cathedral Energy Services

Anticollision Report

Company:	Berry Petroleum Company (NAD 83)	Local Co-ordinate Reference:	Well Chevron 6-23D
Project:	Garfield County	TVD Reference:	KBE @ 8244.0ft (Original Well Elev)
Reference Site:	Sec 6 T6S R96W (F06 696)	MD Reference:	KBE @ 8244.0ft (Original Well Elev)
Site Error:	0.0ft	North Reference:	True
Reference Well:	Chevron 6-23D	Survey Calculation Method:	Minimum Curvature
Well Error:	0.0ft	Output errors are at	2.00 sigma
Reference Wellbore	DD	Database:	EDM 5000.1 US Multi Users DB
Reference Design:	Plan #2	Offset TVD Reference:	Offset Datum

Offset Design Sec 6 T6S R96W (F06 696) - Chevron 6-37D - DD - Plan #2												Offset Site Error:	0.0 ft
Survey Program: 0-MWD												Offset Well Error:	0.0 ft
Reference		Offset		Semi Major Axis			Distance						Warning
Measured Depth (ft)	Vertical Depth (ft)	Measured Depth (ft)	Vertical Depth (ft)	Reference (ft)	Offset (ft)	Highside Toolface (°)	Offset Wellbore Centre +N/-S (ft)	+E/-W (ft)	Between Centres (ft)	Between Ellipses (ft)	Total Uncertainty Axis	Separation Factor	
5,200.0	5,187.6	5,078.7	5,008.6	10.9	16.8	-139.76	187.9	-815.8	1,090.3	1,070.2	20.09	54.276	
5,300.0	5,287.4	5,176.3	5,104.6	11.2	17.2	-139.66	193.8	-832.1	1,112.1	1,091.6	20.47	54.319	
5,400.0	5,387.1	5,273.9	5,200.7	11.4	17.5	-139.55	199.6	-848.3	1,133.9	1,113.0	20.86	54.361	
5,500.0	5,486.9	5,371.5	5,296.7	11.6	17.9	-139.46	205.5	-864.6	1,155.6	1,134.4	21.24	54.401	
5,600.0	5,586.6	5,469.0	5,392.7	11.8	18.2	-139.36	211.3	-880.8	1,177.4	1,155.8	21.63	54.441	
5,700.0	5,686.3	5,566.6	5,488.8	12.0	18.6	-139.27	217.2	-897.1	1,199.3	1,177.2	22.01	54.479	
5,800.0	5,786.1	5,664.2	5,584.8	12.2	18.9	-139.18	223.0	-913.3	1,221.1	1,198.7	22.40	54.516	

Cathedral Energy Services

Anticollision Report

Company:	Berry Petroleum Company (NAD 83)	Local Co-ordinate Reference:	Well Chevron 6-23D
Project:	Garfield County	TVD Reference:	KBE @ 8244.0ft (Original Well Elev)
Reference Site:	Sec 6 T6S R96W (F06 696)	MD Reference:	KBE @ 8244.0ft (Original Well Elev)
Site Error:	0.0ft	North Reference:	True
Reference Well:	Chevron 6-23D	Survey Calculation Method:	Minimum Curvature
Well Error:	0.0ft	Output errors are at	2.00 sigma
Reference Wellbore	DD	Database:	EDM 5000.1 US Multi Users DB
Reference Design:	Plan #2	Offset TVD Reference:	Offset Datum

Offset Design Sec 6 T6S R96W (F06 696) - Chevron 6-38D - DD - Plan #2													Offset Site Error:	0.0 ft
Survey Program: 0-MWD													Offset Well Error:	0.0 ft
Reference		Offset		Semi Major Axis			Distance					Warning		
Measured Depth (ft)	Vertical Depth (ft)	Measured Depth (ft)	Vertical Depth (ft)	Reference (ft)	Offset (ft)	Highside Toolface (°)	Offset Wellbore Centre +N/-S (ft)	+E/-W (ft)	Between Centres (ft)	Between Ellipses (ft)	Total Uncertainty Axis	Separation Factor		
0.0	0.0	0.0	0.0	0.0	0.0	-143.26	-71.4	-53.3	89.1					
100.0	100.0	100.0	100.0	0.1	0.1	-143.26	-71.4	-53.3	89.1	88.8	0.27	327.190		
200.0	200.0	200.0	200.0	0.3	0.3	-143.26	-71.4	-53.3	89.1	88.5	0.62	143.376 CC, ES		
300.0	300.0	299.9	299.8	0.5	0.5	170.26	-70.4	-54.7	90.9	89.9	0.97	93.313		
400.0	399.8	399.3	399.1	0.7	0.7	173.86	-67.4	-58.9	96.4	95.1	1.34	71.908		
500.0	499.6	498.0	497.4	0.9	0.9	178.94	-62.4	-65.9	104.9	103.2	1.74	60.434		
600.0	599.3	595.9	594.6	1.1	1.2	-175.17	-55.5	-75.5	115.0	112.8	2.16	53.223		
700.0	699.1	692.8	690.3	1.3	1.5	-168.93	-46.9	-87.7	127.5	124.8	2.61	48.761		
800.0	798.8	789.9	785.9	1.5	1.8	-162.88	-36.7	-102.0	142.5	139.4	3.07	46.404		
900.0	898.6	887.7	882.0	1.7	2.1	-157.91	-26.3	-116.6	158.9	155.4	3.52	45.142		
1,000.0	998.3	985.5	978.2	1.9	2.5	-153.88	-15.9	-131.2	176.3	172.3	3.96	44.510		
1,100.0	1,098.1	1,083.3	1,074.3	2.2	2.8	-150.58	-5.5	-145.8	194.4	190.0	4.39	44.239		
1,200.0	1,197.8	1,181.1	1,170.4	2.4	3.2	-147.85	4.8	-160.3	213.0	208.2	4.82	44.181 SF		
1,300.0	1,297.5	1,278.8	1,266.6	2.6	3.5	-145.55	15.2	-174.9	232.0	226.8	5.24	44.248		
1,400.0	1,397.3	1,376.6	1,362.7	2.8	3.9	-143.60	25.6	-189.5	251.3	245.7	5.66	44.388		
1,500.0	1,497.0	1,474.4	1,458.8	3.0	4.3	-141.93	36.0	-204.1	270.9	264.8	6.08	44.570		
1,600.0	1,596.8	1,572.2	1,554.9	3.2	4.6	-140.49	46.4	-218.6	290.6	284.2	6.49	44.775		
1,700.0	1,696.5	1,670.0	1,651.1	3.4	5.0	-139.23	56.7	-233.2	310.6	303.7	6.90	44.990		
1,800.0	1,796.3	1,767.8	1,747.2	3.7	5.3	-138.12	67.1	-247.8	330.6	323.3	7.31	45.207		
1,900.0	1,896.0	1,865.5	1,843.3	3.9	5.7	-137.13	77.5	-262.4	350.7	343.0	7.72	45.421		
2,000.0	1,995.8	1,963.3	1,939.5	4.1	6.0	-136.26	87.9	-277.0	371.0	362.8	8.13	45.631		
2,100.0	2,095.5	2,061.1	2,035.6	4.3	6.4	-135.47	98.2	-291.5	391.3	382.7	8.54	45.833		
2,200.0	2,195.3	2,158.9	2,131.7	4.5	6.7	-134.76	108.6	-306.1	411.6	402.7	8.94	46.028		
2,300.0	2,295.0	2,256.7	2,227.9	4.7	7.1	-134.12	119.0	-320.7	432.1	422.7	9.35	46.214		
2,400.0	2,394.7	2,354.4	2,324.0	4.9	7.5	-133.54	129.4	-335.3	452.5	442.8	9.75	46.392		
2,500.0	2,494.5	2,452.2	2,420.1	5.2	7.8	-133.00	139.8	-349.8	473.0	462.9	10.16	46.562		
2,600.0	2,594.2	2,550.0	2,516.3	5.4	8.2	-132.51	150.1	-364.4	493.6	483.0	10.56	46.723		
2,700.0	2,694.0	2,647.8	2,612.4	5.6	8.5	-132.06	160.5	-379.0	514.2	503.2	10.97	46.877		
2,800.0	2,793.7	2,745.6	2,708.5	5.8	8.9	-131.65	170.9	-393.6	534.8	523.4	11.37	47.024		
2,900.0	2,893.5	2,843.4	2,804.7	6.0	9.3	-131.26	181.3	-408.1	555.4	543.6	11.78	47.163		
3,000.0	2,993.2	2,941.1	2,900.8	6.2	9.6	-130.91	191.6	-422.7	576.1	563.9	12.18	47.295		
3,100.0	3,093.0	3,038.9	2,996.9	6.4	10.0	-130.58	202.0	-437.3	596.7	584.2	12.58	47.422		
3,200.0	3,192.7	3,136.7	3,093.1	6.7	10.3	-130.27	212.4	-451.9	617.4	604.5	12.99	47.542		
3,300.0	3,292.5	3,234.5	3,189.2	6.9	10.7	-129.98	222.8	-466.4	638.2	624.8	13.39	47.657		
3,400.0	3,392.2	3,332.3	3,285.3	7.1	11.0	-129.70	233.2	-481.0	658.9	645.1	13.79	47.766		
3,500.0	3,491.9	3,430.1	3,381.4	7.3	11.4	-129.45	243.5	-495.6	679.6	665.4	14.20	47.871		
3,600.0	3,591.7	3,527.8	3,477.6	7.5	11.8	-129.21	253.9	-510.2	700.4	685.8	14.60	47.971		
3,700.0	3,691.4	3,625.6	3,573.7	7.7	12.1	-128.98	264.3	-524.7	721.1	706.1	15.00	48.066		
3,800.0	3,791.2	3,723.4	3,669.8	7.9	12.5	-128.77	274.7	-539.3	741.9	726.5	15.41	48.158		
3,900.0	3,890.9	3,821.2	3,766.0	8.2	12.8	-128.57	285.1	-553.9	762.7	746.9	15.81	48.245		
4,000.0	3,990.7	3,919.0	3,862.1	8.4	13.2	-128.38	295.4	-568.5	783.5	767.3	16.21	48.329		
4,100.0	4,090.4	4,016.8	3,958.2	8.6	13.6	-128.19	305.8	-583.0	804.3	787.6	16.61	48.410		
4,200.0	4,190.2	4,114.5	4,054.4	8.8	13.9	-128.02	316.2	-597.6	825.1	808.0	17.02	48.487		
4,300.0	4,289.9	4,212.3	4,150.5	9.0	14.3	-127.86	326.6	-612.2	845.9	828.5	17.42	48.561		
4,400.0	4,389.7	4,310.1	4,246.6	9.2	14.6	-127.70	336.9	-626.8	866.7	848.9	17.82	48.633		
4,500.0	4,489.4	4,407.9	4,342.8	9.4	15.0	-127.55	347.3	-641.3	887.5	869.3	18.22	48.701		
4,600.0	4,589.1	4,505.7	4,438.9	9.7	15.3	-127.41	357.7	-655.9	908.3	889.7	18.63	48.767		
4,700.0	4,688.9	4,603.4	4,535.0	9.9	15.7	-127.28	368.1	-670.5	929.2	910.1	19.03	48.831		
4,800.0	4,788.6	4,701.2	4,631.2	10.1	16.1	-127.15	378.5	-685.1	950.0	930.6	19.43	48.892		
4,900.0	4,888.4	4,799.0	4,727.3	10.3	16.4	-127.02	388.8	-699.6	970.9	951.0	19.83	48.951		
5,000.0	4,988.1	4,896.8	4,823.4	10.5	16.8	-126.90	399.2	-714.2	991.7	971.5	20.24	49.008		
5,100.0	5,087.9	4,994.6	4,919.6	10.7	17.1	-126.79	409.6	-728.8	1,012.6	991.9	20.64	49.063		

CC - Min centre to center distance or convergent point, SF - min separation factor, ES - min ellipse separation

Cathedral Energy Services

Anticollision Report

Company:	Berry Petroleum Company (NAD 83)	Local Co-ordinate Reference:	Well Chevron 6-23D
Project:	Garfield County	TVD Reference:	KBE @ 8244.0ft (Original Well Elev)
Reference Site:	Sec 6 T6S R96W (F06 696)	MD Reference:	KBE @ 8244.0ft (Original Well Elev)
Site Error:	0.0ft	North Reference:	True
Reference Well:	Chevron 6-23D	Survey Calculation Method:	Minimum Curvature
Well Error:	0.0ft	Output errors are at	2.00 sigma
Reference Wellbore	DD	Database:	EDM 5000.1 US Multi Users DB
Reference Design:	Plan #2	Offset TVD Reference:	Offset Datum

Offset Design Sec 6 T6S R96W (F06 696) - Chevron 6-38D - DD - Plan #2													Offset Site Error:	0.0 ft
Survey Program: 0-MWD													Offset Well Error:	0.0 ft
Reference		Offset		Semi Major Axis			Distance						Warning	
Measured Depth (ft)	Vertical Depth (ft)	Measured Depth (ft)	Vertical Depth (ft)	Reference (ft)	Offset (ft)	Highside Toolface (°)	Offset Wellbore Centre +N/-S (ft)	+E/-W (ft)	Between Centres (ft)	Between Ellipses (ft)	Total Uncertainty Axis	Separation Factor		
5,200.0	5,187.6	5,092.4	5,015.7	10.9	17.5	-126.68	420.0	-743.4	1,033.4	1,012.4	21.04	49.116		
5,300.0	5,287.4	5,190.1	5,111.8	11.2	17.9	-126.58	430.4	-757.9	1,054.3	1,032.8	21.44	49.167		
5,400.0	5,387.1	5,287.9	5,208.0	11.4	18.2	-126.48	440.7	-772.5	1,075.1	1,053.3	21.84	49.217		
5,500.0	5,486.9	5,385.7	5,304.1	11.6	18.6	-126.38	451.1	-787.1	1,096.0	1,073.7	22.25	49.265		
5,600.0	5,586.6	5,483.5	5,400.2	11.8	18.9	-126.28	461.5	-801.7	1,116.9	1,094.2	22.65	49.311		
5,700.0	5,686.3	5,581.3	5,496.3	12.0	19.3	-126.19	471.9	-816.2	1,137.7	1,114.7	23.05	49.356		
5,800.0	5,786.1	5,679.1	5,592.5	12.2	19.7	-126.11	482.2	-830.8	1,158.6	1,135.2	23.45	49.400		
5,900.0	5,885.9	5,777.0	5,688.7	12.4	20.0	-126.26	492.6	-845.4	1,178.7	1,154.8	23.89	49.327		
6,000.0	5,985.9	5,875.2	5,785.3	12.6	20.4	-126.29	503.1	-860.1	1,196.7	1,172.4	24.29	49.272		
6,100.0	6,085.9	5,973.5	5,881.9	12.7	20.7	41.83	513.5	-874.7	1,213.4	1,188.8	24.62	49.287		

Cathedral Energy Services

Anticollision Report

Company:	Berry Petroleum Company (NAD 83)	Local Co-ordinate Reference:	Well Chevron 6-23D
Project:	Garfield County	TVD Reference:	KBE @ 8244.0ft (Original Well Elev)
Reference Site:	Sec 6 T6S R96W (F06 696)	MD Reference:	KBE @ 8244.0ft (Original Well Elev)
Site Error:	0.0ft	North Reference:	True
Reference Well:	Chevron 6-23D	Survey Calculation Method:	Minimum Curvature
Well Error:	0.0ft	Output errors are at	2.00 sigma
Reference Wellbore	DD	Database:	EDM 5000.1 US Multi Users DB
Reference Design:	Plan #2	Offset TVD Reference:	Offset Datum

Offset Design Section 6 T6S R96W - Chevron 6-26D - DD - Plan #1													Offset Site Error:	0.0 ft
Survey Program: 0-													Offset Well Error:	0.0 ft
Reference		Offset		Semi Major Axis			Distance				Total Uncertainty Axis	Separation Factor	Warning	
Measured Depth (ft)	Vertical Depth (ft)	Measured Depth (ft)	Vertical Depth (ft)	Reference (ft)	Offset (ft)	Highside Toolface (°)	Offset Wellbore Centre +N/-S (ft)	+E/-W (ft)	Between Centres (ft)	Between Ellipses (ft)				
3,700.0	3,691.4	3,848.8	3,797.7	7.7	12.5	-49.82	1,364.3	149.4	1,219.5	1,205.1	14.31	85.212		
3,800.0	3,791.2	3,946.5	3,893.9	7.9	12.8	-49.87	1,347.9	154.2	1,198.0	1,183.3	14.69	81.546		
3,900.0	3,890.9	4,044.1	3,990.1	8.2	13.2	-49.92	1,331.5	159.1	1,176.5	1,161.5	15.07	78.065		
4,000.0	3,990.7	4,141.8	4,086.2	8.4	13.5	-49.97	1,315.1	163.9	1,155.1	1,139.6	15.45	74.757		
4,100.0	4,090.4	4,239.5	4,182.4	8.6	13.8	-50.03	1,298.8	168.7	1,133.6	1,117.8	15.83	71.609		
4,200.0	4,190.2	4,337.1	4,278.5	8.8	14.2	-50.08	1,282.4	173.5	1,112.1	1,095.9	16.21	68.609		
4,300.0	4,289.9	4,434.8	4,374.7	9.0	14.5	-50.14	1,266.0	178.3	1,090.7	1,074.1	16.59	65.748		
4,400.0	4,389.7	4,532.4	4,470.8	9.2	14.9	-50.21	1,249.6	183.1	1,069.2	1,052.3	16.97	63.015		
4,500.0	4,489.4	4,630.1	4,567.0	9.4	15.2	-50.27	1,233.2	187.9	1,047.8	1,030.4	17.35	60.403		
4,600.0	4,589.1	4,727.8	4,663.2	9.7	15.6	-50.34	1,216.8	192.7	1,026.3	1,008.6	17.72	57.903		
4,700.0	4,688.9	4,825.4	4,759.3	9.9	15.9	-50.41	1,200.4	197.5	1,004.8	986.7	18.10	55.509		
4,800.0	4,788.6	4,923.1	4,855.5	10.1	16.3	-50.48	1,184.0	202.3	983.4	964.9	18.48	53.213		
4,900.0	4,888.4	5,020.8	4,951.6	10.3	16.6	-50.55	1,167.6	207.1	961.9	943.1	18.86	51.011		
5,000.0	4,988.1	5,118.4	5,047.8	10.5	16.9	-50.63	1,151.2	211.9	940.5	921.3	19.23	48.896		
5,100.0	5,087.9	5,216.1	5,144.0	10.7	17.3	-50.72	1,134.9	216.7	919.0	899.4	19.61	46.863		
5,200.0	5,187.6	5,313.8	5,240.1	10.9	17.6	-50.80	1,118.5	221.5	897.6	877.6	19.99	44.908		
5,300.0	5,287.4	5,411.4	5,336.3	11.2	18.0	-50.90	1,102.1	226.3	876.2	855.8	20.36	43.026		
5,400.0	5,387.1	5,509.1	5,432.4	11.4	18.3	-50.99	1,085.7	231.1	854.7	834.0	20.74	41.213		
5,500.0	5,486.9	5,606.7	5,528.6	11.6	18.7	-51.09	1,069.3	236.0	833.3	812.2	21.11	39.466		
5,600.0	5,586.6	5,704.4	5,624.7	11.8	19.0	-51.20	1,052.9	240.8	811.8	790.3	21.49	37.780		
5,700.0	5,686.3	5,802.1	5,720.9	12.0	19.3	-51.31	1,036.5	245.6	790.4	768.5	21.86	36.154		
5,800.0	5,786.1	5,899.7	5,817.1	12.2	19.7	-51.43	1,020.1	250.4	769.0	746.7	22.24	34.583		
5,900.0	5,885.9	5,997.6	5,913.4	12.4	20.0	-51.17	1,003.7	255.2	748.4	725.8	22.64	33.051		
6,000.0	5,985.9	6,095.9	6,010.2	12.6	20.4	-50.70	987.2	260.0	730.0	707.0	23.04	31.683		
6,100.0	6,085.9	6,182.8	6,095.8	12.7	20.7	-117.48	973.0	264.2	713.5	690.1	23.38	30.512		
6,200.0	6,185.9	6,262.7	6,174.8	12.8	20.9	-117.77	961.9	267.4	699.7	676.0	23.70	29.520		
6,300.0	6,285.9	6,343.1	6,254.7	13.0	21.1	-118.03	952.9	270.1	688.8	664.8	24.02	28.680		
6,400.0	6,385.9	6,424.0	6,335.3	13.1	21.2	-118.24	946.0	272.1	680.7	656.3	24.33	27.982		
6,500.0	6,485.9	6,500.0	6,411.2	13.3	21.4	-118.40	941.5	273.4	675.3	650.7	24.62	27.430		
6,600.0	6,585.9	6,586.6	6,497.7	13.4	21.5	-118.53	938.7	274.3	672.6	647.7	24.92	26.986		
6,646.6	6,632.4	6,624.6	6,535.7	13.5	21.5	-118.57	938.3	274.4	672.3	647.2	25.06	26.828 CC, ES		
6,700.0	6,685.9	6,672.7	6,583.8	13.5	21.5	-118.60	938.3	274.4	672.6	647.3	25.22	26.665		
6,800.0	6,785.9	6,766.9	6,678.0	13.7	21.6	-118.67	939.0	274.3	673.8	648.3	25.53	26.388		
6,900.0	6,885.9	6,861.1	6,772.2	13.8	21.7	-118.73	940.5	274.1	675.9	650.0	25.85	26.151		
7,000.0	6,985.9	6,955.2	6,866.3	14.0	21.7	-118.78	942.8	273.9	678.8	652.7	26.16	25.952		
7,100.0	7,085.8	7,049.3	6,960.3	14.1	21.8	-118.82	945.9	273.5	682.6	656.1	26.47	25.791		
7,200.0	7,185.8	7,143.3	7,054.3	14.3	21.8	-118.86	949.8	273.1	687.3	660.5	26.78	25.666		
7,300.0	7,285.8	7,237.3	7,148.1	14.4	21.8	-118.90	954.5	272.5	692.8	665.7	27.09	25.576		
7,400.0	7,385.8	7,331.1	7,241.8	14.5	21.8	-118.92	960.0	271.9	699.1	671.7	27.40	25.519		
7,500.0	7,485.8	7,424.9	7,335.3	14.7	21.8	-118.94	966.3	271.1	706.3	678.6	27.71	25.495 SF		
7,600.0	7,585.8	7,518.5	7,428.7	14.8	21.8	-118.95	973.4	270.3	714.4	686.4	28.01	25.502		
7,700.0	7,685.8	7,612.0	7,521.8	15.0	21.8	-118.96	981.2	269.4	723.3	695.0	28.32	25.539		
7,800.0	7,785.8	7,705.3	7,614.7	15.1	21.8	-118.95	989.9	268.4	733.1	704.4	28.63	25.605		
7,900.0	7,885.8	7,804.1	7,713.1	15.3	21.8	-118.95	999.5	267.3	743.3	714.4	28.95	25.679		
8,000.0	7,985.8	7,903.6	7,812.0	15.4	21.7	-118.94	1,009.2	266.2	753.6	724.4	29.27	25.750		
8,100.0	8,085.8	8,003.1	7,911.0	15.6	21.7	-118.94	1,018.9	265.1	763.9	734.3	29.59	25.819		
8,200.0	8,185.8	8,102.5	8,010.0	15.7	21.7	-118.94	1,028.7	263.9	774.2	744.3	29.91	25.886		
8,300.0	8,285.8	8,202.0	8,109.0	15.9	21.7	-118.93	1,038.4	262.8	784.4	754.2	30.23	25.951		
8,400.0	8,385.8	8,301.5	8,208.0	16.0	21.7	-118.93	1,048.1	261.7	794.7	764.2	30.55	26.014		
8,500.0	8,485.8	8,400.9	8,307.0	16.2	21.7	-118.92	1,057.8	260.6	805.0	774.1	30.87	26.075		
8,600.0	8,585.8	8,500.4	8,406.0	16.3	21.7	-118.92	1,067.5	259.5	815.3	784.1	31.19	26.135		
8,700.0	8,685.8	8,599.9	8,505.0	16.5	21.7	-118.91	1,077.2	258.3	825.5	794.0	31.52	26.193		

CC - Min centre to center distance or convergent point, SF - min separation factor, ES - min ellipse separation

Cathedral Energy Services

Anticollision Report

Company:	Berry Petroleum Company (NAD 83)	Local Co-ordinate Reference:	Well Chevron 6-23D
Project:	Garfield County	TVD Reference:	KBE @ 8244.0ft (Original Well Elev)
Reference Site:	Sec 6 T6S R96W (F06 696)	MD Reference:	KBE @ 8244.0ft (Original Well Elev)
Site Error:	0.0ft	North Reference:	True
Reference Well:	Chevron 6-23D	Survey Calculation Method:	Minimum Curvature
Well Error:	0.0ft	Output errors are at	2.00 sigma
Reference Wellbore	DD	Database:	EDM 5000.1 US Multi Users DB
Reference Design:	Plan #2	Offset TVD Reference:	Offset Datum

Offset Design Section 6 T6S R96W - Chevron 6-26D - DD - Plan #1													Offset Site Error:	0.0 ft
Survey Program: 0-													Offset Well Error:	0.0 ft
Reference		Offset		Semi Major Axis			Distance							
Measured Depth (ft)	Vertical Depth (ft)	Measured Depth (ft)	Vertical Depth (ft)	Reference (ft)	Offset (ft)	Highside Toolface (°)	Offset Wellbore Centre +N/-S (ft)	+E/-W (ft)	Between Centres (ft)	Between Ellipses (ft)	Total Uncertainty Axis	Separation Factor	Warning	
8,800.0	8,785.8	8,699.4	8,604.0	16.7	21.7	118.91	1,087.0	257.2	835.8	804.0	31.84	26.249		
8,900.0	8,885.8	8,798.8	8,702.9	16.8	21.7	118.91	1,096.7	256.1	846.1	813.9	32.17	26.303		
9,000.0	8,985.7	8,898.3	8,801.9	17.0	21.7	118.90	1,106.4	255.0	856.4	823.9	32.49	26.356		
9,100.0	9,085.7	8,997.8	8,900.9	17.1	21.7	118.90	1,116.1	253.9	866.6	833.8	32.82	26.408		
9,200.0	9,185.7	9,097.2	8,999.9	17.3	21.7	118.90	1,125.8	252.7	876.9	843.8	33.14	26.458		
9,300.0	9,285.7	9,196.7	9,098.9	17.4	21.7	118.89	1,135.5	251.6	887.2	853.7	33.47	26.507		
9,400.0	9,385.7	9,296.2	9,197.9	17.6	21.7	118.89	1,145.2	250.5	897.4	863.6	33.80	26.554		
9,500.0	9,485.7	9,395.7	9,296.9	17.7	21.8	118.89	1,155.0	249.4	907.7	873.6	34.12	26.601		
9,600.0	9,585.7	9,495.1	9,395.9	17.9	21.8	118.88	1,164.7	248.2	918.0	883.5	34.45	26.646		
9,700.0	9,685.7	9,594.6	9,494.9	18.1	21.8	118.88	1,174.4	247.1	928.3	893.5	34.78	26.689		
9,800.0	9,785.7	9,694.1	9,593.8	18.2	21.8	118.88	1,184.1	246.0	938.5	903.4	35.11	26.732		
9,900.0	9,885.7	9,793.5	9,692.8	18.4	21.9	118.87	1,193.8	244.9	948.8	913.4	35.44	26.774		
10,000.0	9,985.7	9,893.0	9,791.8	18.5	21.9	118.87	1,203.5	243.8	959.1	923.3	35.77	26.814		
10,088.3	10,074.0	9,980.8	9,879.2	18.7	21.9	118.87	1,212.1	242.8	968.2	932.1	36.06	26.849		

Cathedral Energy Services

Anticollision Report

Company:	Berry Petroleum Company (NAD 83)	Local Co-ordinate Reference:	Well Chevron 6-23D
Project:	Garfield County	TVD Reference:	KBE @ 8244.0ft (Original Well Elev)
Reference Site:	Sec 6 T6S R96W (F06 696)	MD Reference:	KBE @ 8244.0ft (Original Well Elev)
Site Error:	0.0ft	North Reference:	True
Reference Well:	Chevron 6-23D	Survey Calculation Method:	Minimum Curvature
Well Error:	0.0ft	Output errors are at	2.00 sigma
Reference Wellbore	DD	Database:	EDM 5000.1 US Multi Users DB
Reference Design:	Plan #2	Offset TVD Reference:	Offset Datum

Reference Depths are relative to KBE @ 8244.0ft (Original Well Elev)
 Offset Depths are relative to Offset Datum
 Central Meridian is -105.500000 °

Coordinates are relative to: Chevron 6-23D
 Coordinate System is US State Plane 1983, Colorado Central Zone
 Grid Convergence at Surface is: -1.67°

