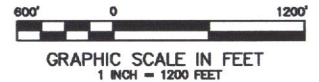
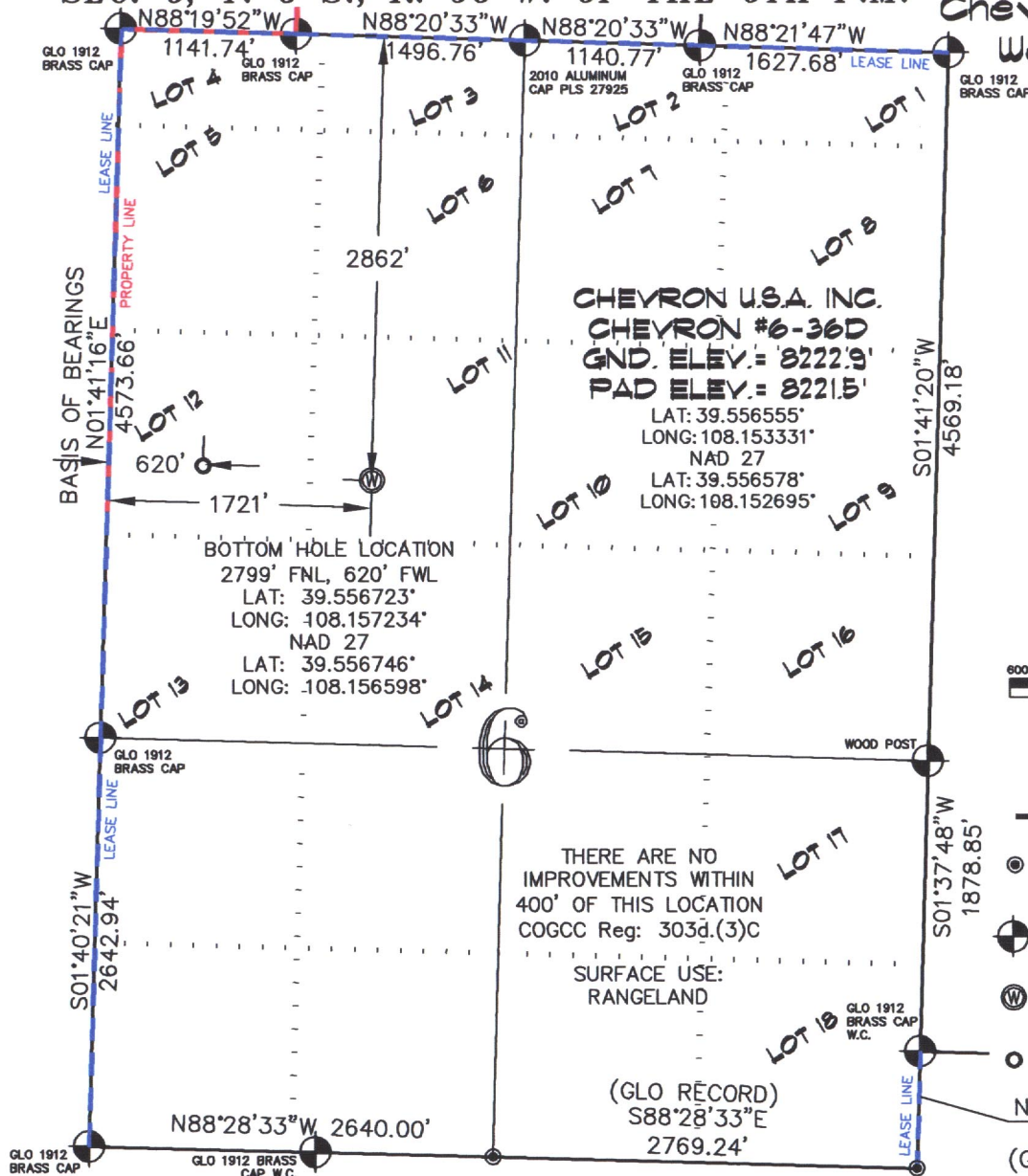


SEC. 6, T. 6 S., R. 96 W. OF THE 6TH P.M.

Chevron F-06-696

Well Location



—LEGEND—

- SECTION CORNER LOCATION BASED ON GLO RECORD INFORMATION
- FIELD SURVEYED SECTION CORNER LOCATIONS
- FIELD SURVEYED WELL LOCATION
- CALCULATED BOTTOM HOLE LOCATION

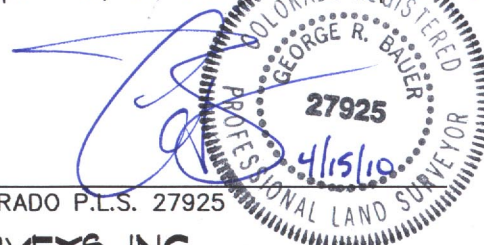
THIS WELL LOCATION PLAT WAS PREPARED FOR BERRY PETROLEUM COMPANY TO LOCATE THE CHEVRON #6-36D WELL, 2862 FEET FROM THE NORTH LINE AND 1721 FEET FROM THE WEST LINE IN LOT 11 OF SECTION 6, T. 6 S., R. 96 W. OF THE 6TH P.M. GARFIELD COUNTY, COLORADO.

REFERENCE NOTES

- 1) T. 6 S., R. 96 W., 6TH P.M. GLO PLAT.
- 2) U.S.G.S. QUAD: CIRCLE DOT GULCH, CO
- 3) ELEVATIONS BASED ON N.A.V.D. 1988
- 4) LATITUDES AND LONGITUDES ARE BASED ON NAD 83, COLORADO CENTRAL ZONE.
- 5) GPS OPERATOR ROBERT WOOD, OBSERVED A PDOP OF 2.4.
- 6) ALL GPS OBSERVATIONS ARE IN COMPLIANCE WITH COGCC RULE NO. 215.
- 7) SURFACE AND BOTTOM HOLE LOCATIONS ARE MEASURED 90° FROM SECTION LINES.

SURVEYOR'S CERTIFICATE

I, George R. Bauer: a Professional Land Surveyor in the State of Colorado do hereby certify that this Survey was made under my direct supervision, and that this Plat represents said Survey.



COLORADO P.L.S. 27925



CONSTRUCTION SURVEYS, INC.
0012 SUNRISE BLYD.
SILT, CO 81652
(970)876-5753

VIEW: 11

SURVEYED: 09/08/06	SCALE: 1" = 1200'
DRAFTED: 04/09/10	DWG: BERRY\CHEV F6-696
CHECKED: 04/14/10	SHEET: 1 of 11