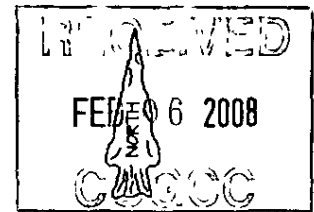


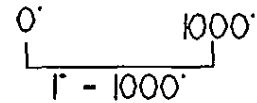


01878828

Well Location Plat



NORTH



• find standard GLO
• /BLM monument

bearings from GPS rotated
minus 159.07°

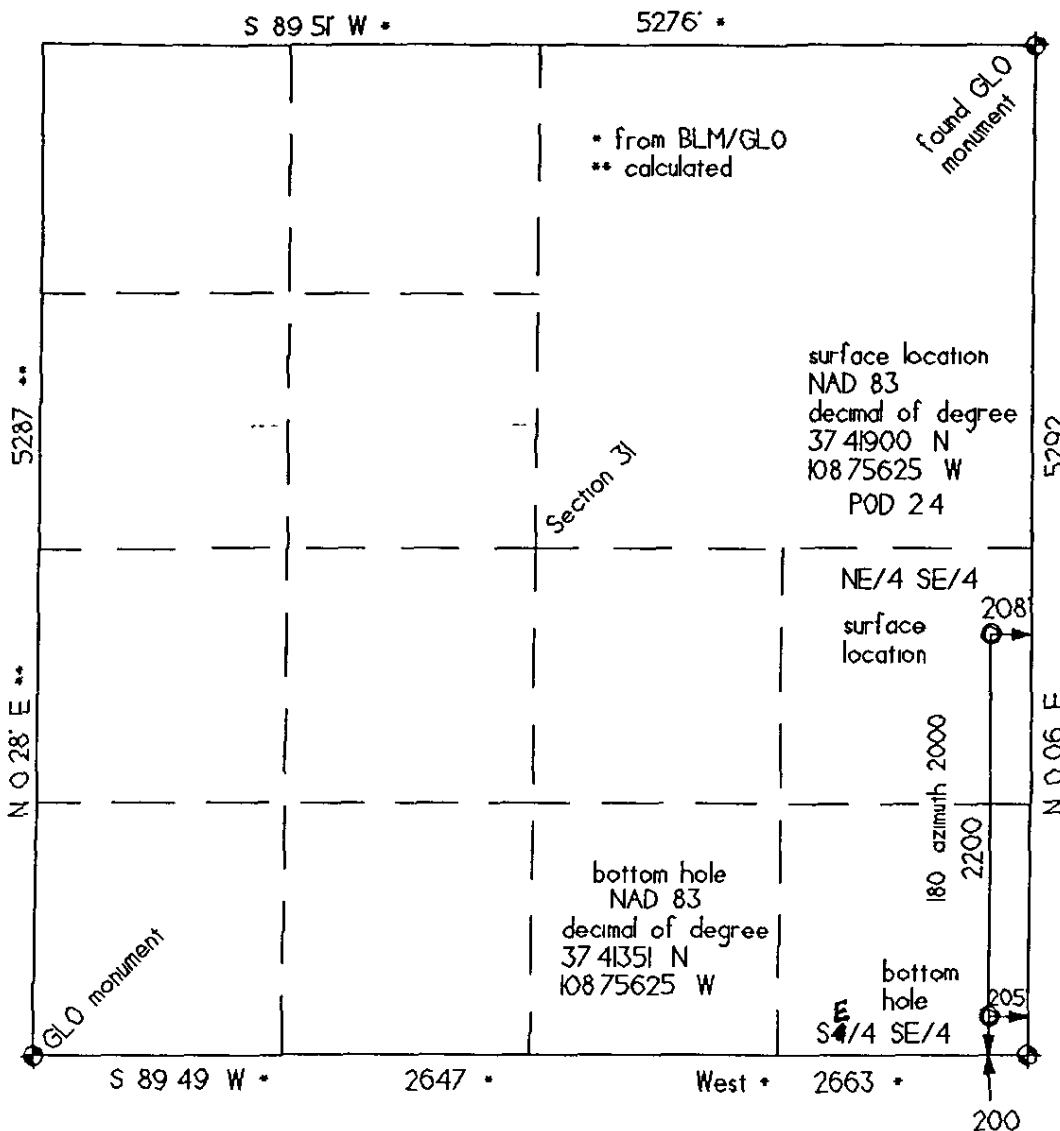
GPS was corrected with
Gila County AZ

There are no improvements
within 400 feet
Land use dryland farming

There is a private road within
200 feet See pit & pad.

Distances/dimensions are
perpendicular to section lines

rebar 2" at cap
LS 19605



KINDER MORGAN CO2 COMPANY, L.P.

Goodman Point - 17 surface location

2200 FSL & 208 FEL

Section 31 T37 N R17 W NMPM

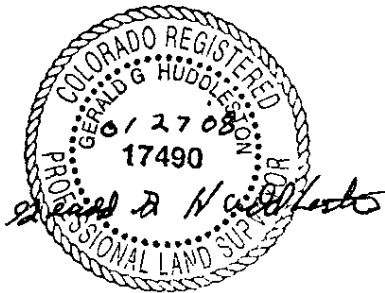
Montezuma County CO

6746 grd el from GPS

200' FSL & 205' FEL bottom hole

Section 31, T37 N, R17 W, NMPM

Montezuma County, CO



Date of survey 01/25/08

Date of plat 01/27/08

The above is true and correct to my knowledge and belief