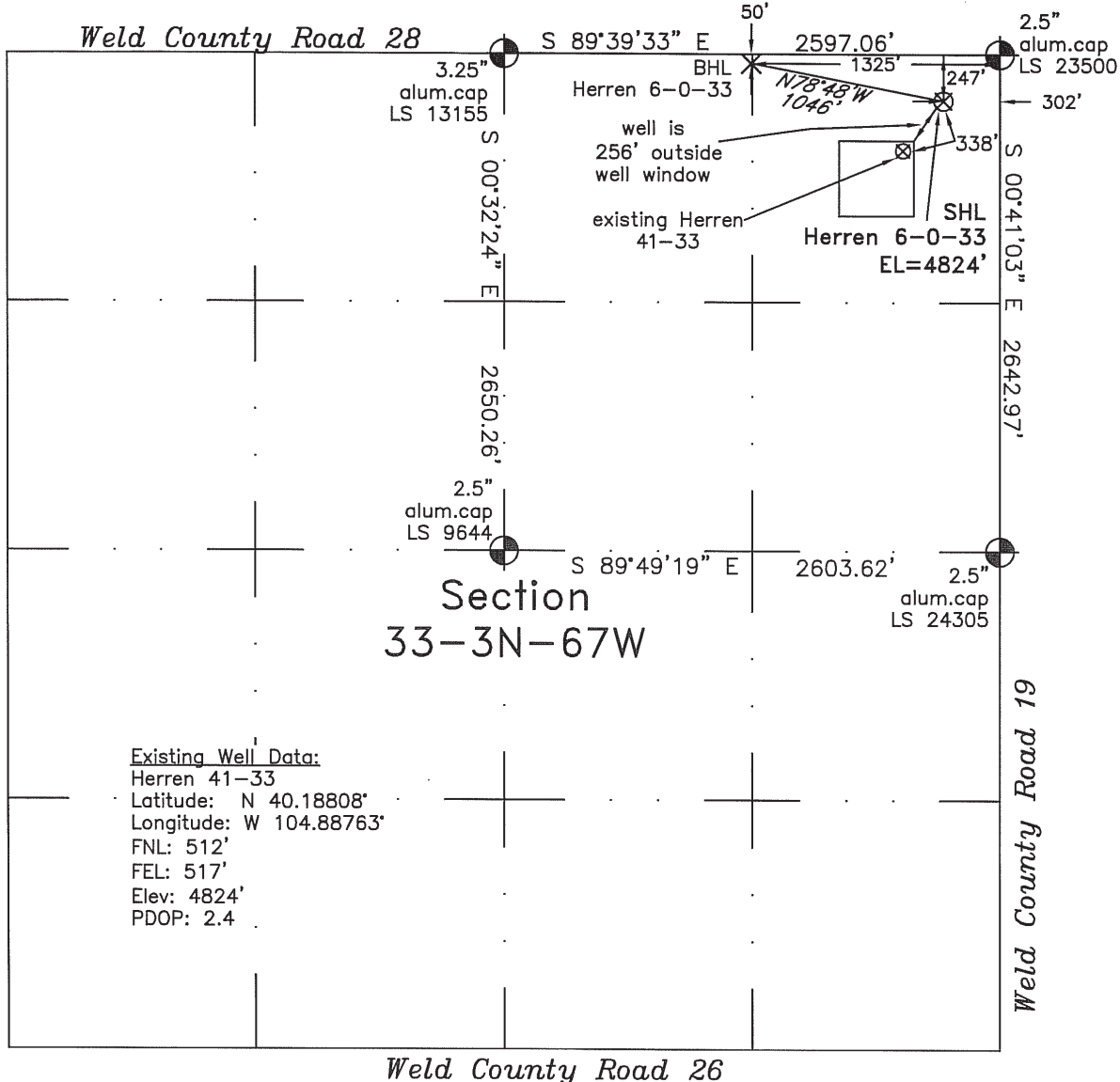


WELL LOCATION CERTIFICATE

THIS MAP DOES NOT REPRESENT A BOUNDARY SURVEY



Existing Well Data:
 Herren 41-33
 Latitude: N 40.18808°
 Longitude: W 104.88763°
 FNL: 512'
 FEL: 517'
 Elev: 4824'
 PDOP: 2.4

Section 33-3N-67W

In accordance with a request from Dan Nelson of EnCana Oil & Gas (USA) Inc., Frederick Land Surveying, Inc. has determined the location of the **Herren 6-0-33** well site to be 247' FNL and 302' FEL, (BHL 50' FNL and 1325' FEL), as measured at ninety (90) degrees from the section lines of Section 33, Township 3 North, Range 67 West of the 6th Principal Meridian, Weld County, Colorado.

Proposed Surface Hole Data:
 Latitude: N 40.18880° BHL(40.18937°)
 Longitude: W 104.88686° BHL(104.89053°)
 Nearest: Building 448' southeast
 Public Road 245' north
 Property Line 247' north

Above Ground Utility 277' north
 Railroad 6200' northwest

PDOP: 2.0

- Notes:
- 1) Bearings and distances based on NAD 83 Colorado North State Plane Coordinates using RTK GPS observations taken 9/3/10 by operator Tom Winans.
 - 2) Conversion factor to ground (1.000271870).
 - 3) Elevations based on NAVD 88 GPS heights and Geoid 2003 corrections.
 - 4) See improvement map for visible improvements within 400 feet of pad site.
 - 5) The location falls on agricultural land.

NOTICE: According to Colorado law you MUST commence any legal action based upon any defect in this W.L.C. within three years after you first discover such defect. In no event may any action based upon any defect in this W.L.C. be commenced more than ten years from this said date of the certification shown hereon.

I hereby certify that this Well Location Certificate was prepared by me or under my direct supervision on 9/17/10 for and on behalf of EnCana Oil & Gas (USA) Inc. that it is a Land Survey plat and that it is not to be relied upon for establishment of fences, buildings, or other future improvement lines.

Alex Ronald Parkins LS#34176
 Job #: 06131.002 9-14-2010