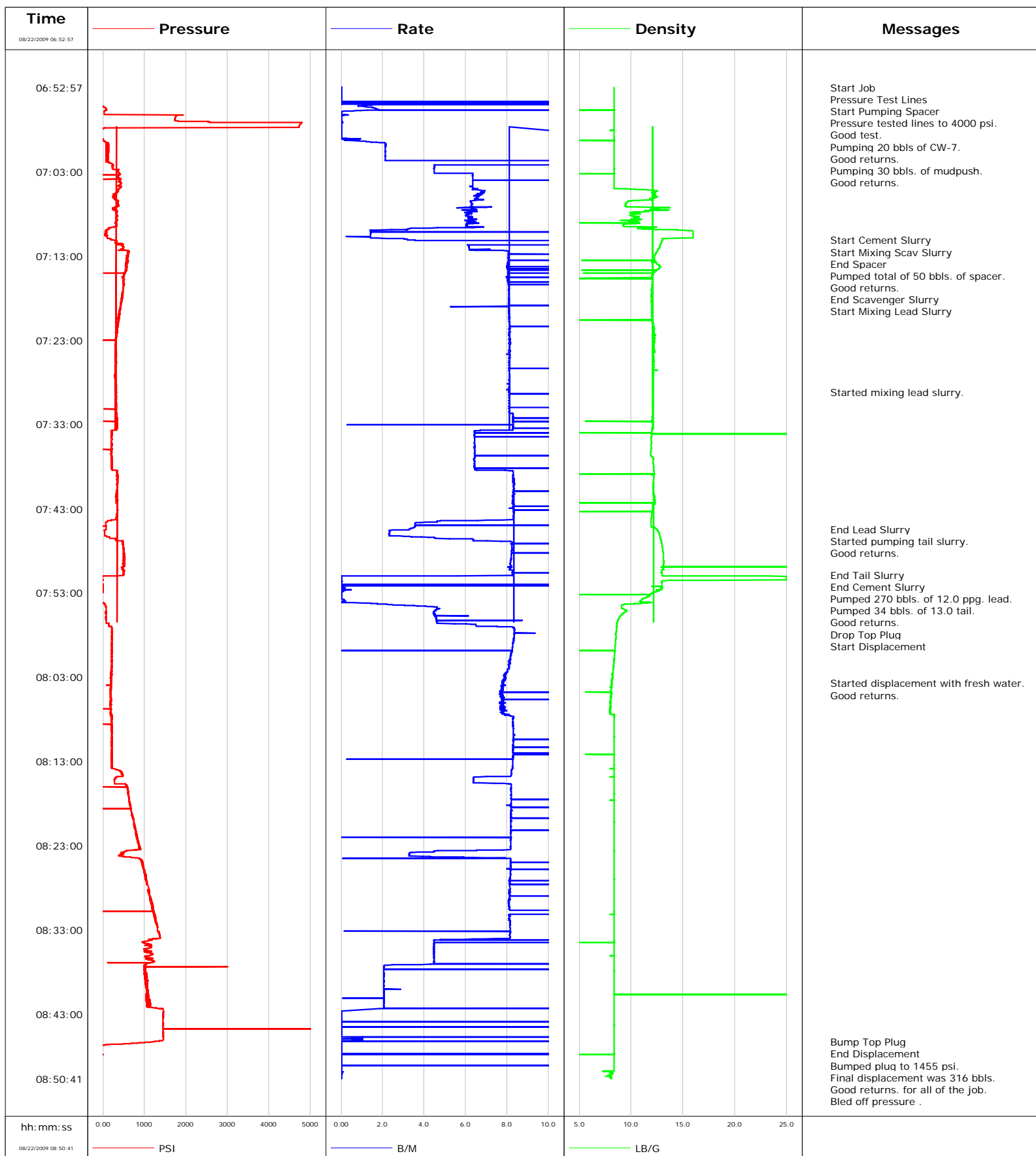


Well
Field
Engineer Jeff Patterson
Country United States

Client
SIR No.
Job Type
Job Date 08-22-2009



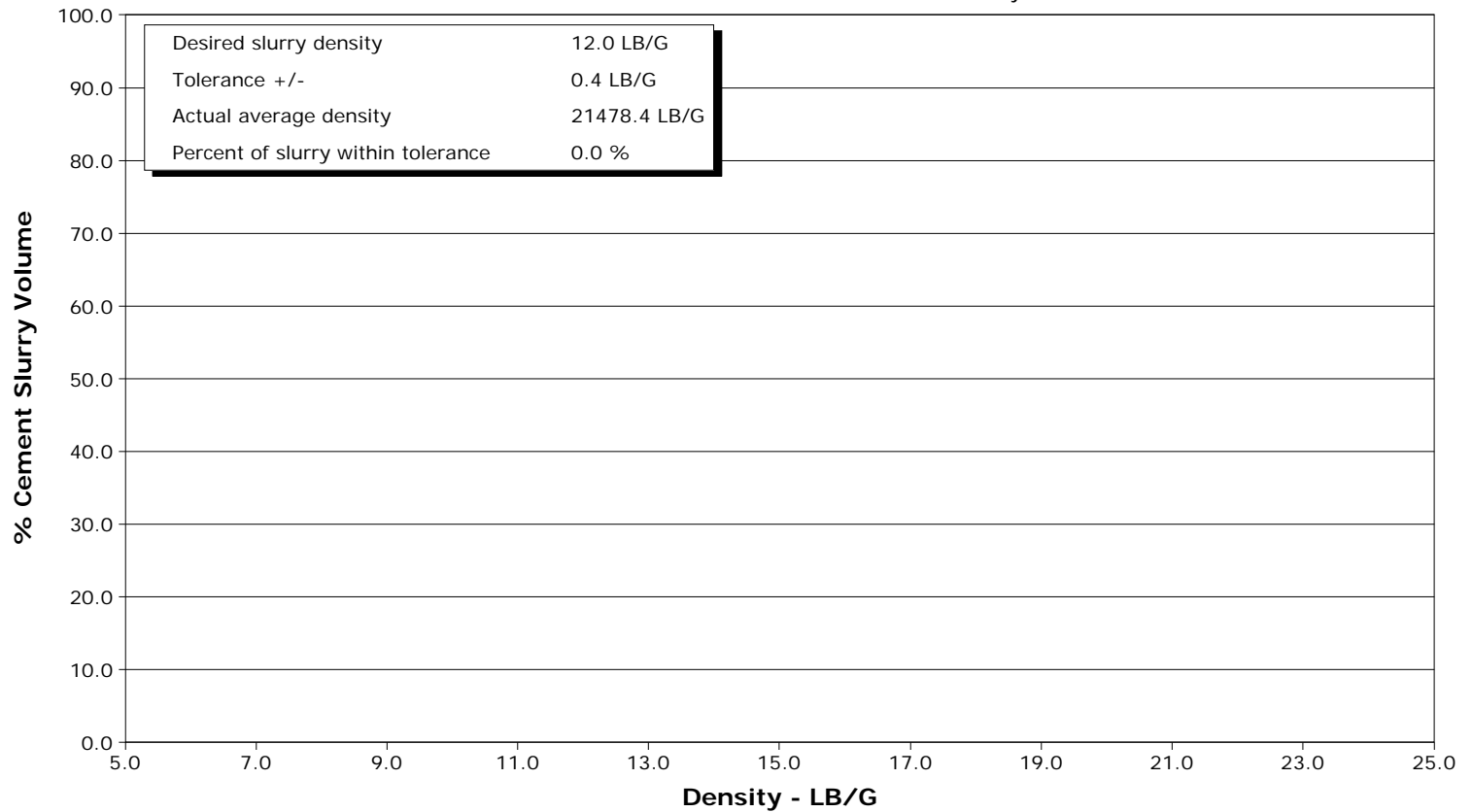


Cementing Qa/Qc Density Report

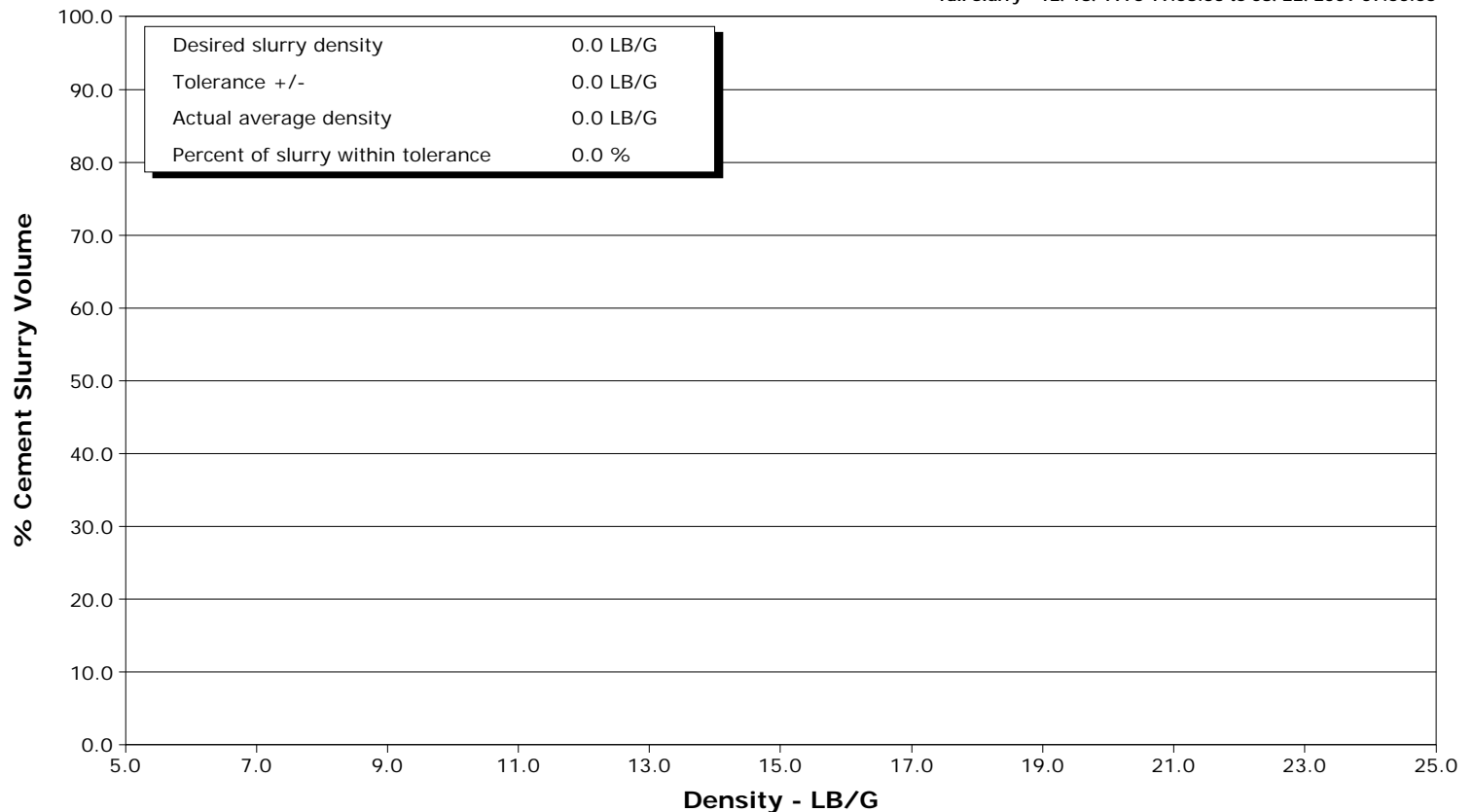
Well
Field
Engineer Jeff Patterson
Country United States

Client
SIR No.
Job Type
Job Date 08-22-2009

Lead Slurry - 08/22/2009 07:12:47 to 08/22/2009 07:45:26



Tail Slurry - 12/18/1973 19:58:33 to 08/22/2009 07:50:53





Cementing Service Report

				Customer EnCana		Job Number B708-00002			
Well EFH32D-10N-C29-595-1			Location (legal) C-29		Schlumberger Location Grand Junction, Colorado.		Job Start Aug/22/2009		
Field N. Parachute		Formation Name/Type		Deviation	Bit Size	Well MD		Well TVD	
County Garfield		State/Province Colorado		BHP	BHST	BHCT	Pore Press. Gradient		
Well Master 0631125225		API/UWI							
Rig Name Patterson 308	Drilled For Gas	Service Via Land	Casing/Liner						
			Depth,	Size,	Weight,	Grade	Thread		
Offshore Zone	Well Class New	Well Type Development							
Drilling Fluid Type		Max. Density	Plastic Viscosity	Tubing/Drill Pipe					
				Depth,	Size,	Weight,	Grade	Thread	
Service Line Cementing	Job Type Cem Interm Casing								
Max. Allowed Tub. Press	Max. Allowed Ann. Press	WH Connection	Perforations/Open Hole						
			Top,	Bottom,		No. of Shots	Total Interval		
							Diameter		
Treat Down		Displacement		Packer Type		Packer Depth			
Tubing Vol.		Casing Vol.		Annular Vol.		Openhole Vol.			
Casing/Tubing Secured <input checked="" type="checkbox"/>	1 Hole Vol. Circulated prior to Cement <input checked="" type="checkbox"/>	Casing Tools						Squeeze Job	
Lift Pressure 3911 psi		Shoe Type Guide	Squeeze Type						
Pipe Rotated <input type="checkbox"/>	Pipe Reciprocated <input type="checkbox"/>	Shoe Depth 6764.0 ft	Tool Type						
No. Centralizers	Top Plugs 1	Bottom Plugs	Stage Tool Type	Tool Depth					
Cement Head Type Single		Stage Tool Depth	Tail Pipe Size						
Job Scheduled For Aug/22/2009	Arrived on Location Aug/22/2009	Leave Location Aug/22/2009	Collar Type Float	Tail Pipe Depth					
			Collar Depth 6720.0 ft	Sqz. Total Vol.					
Date	Time 24-hr clock	Treating Pressure PSI	Flow Rate B/M	Density LB/G	Volume BBL	Message			
01/01/1970	00:00:01					Remark			
12/18/1973	19:58:33					Start Mixing Tail Slurry			
12/14/1977	06:17:06					Remark			
08/22/2009	06:09:11					Started Acquisition			
08/22/2009	06:52:57	-22	0.0	8.37	0.0				
08/22/2009	06:52:58					Start Job			
08/22/2009	06:52:58	-21	0.0	8.37	0.0				
08/22/2009	06:53:02					Pressure Test Lines			
08/22/2009	06:53:02	-21	0.0	8.37	0.0				
08/22/2009	06:53:04					Start Pumping Spacer			
08/22/2009	06:53:04	-21	0.0	8.37	0.0				
08/22/2009	06:53:06					Pressure tested lines to 4000 psi.			
08/22/2009	06:53:06					Good test.			
08/22/2009	06:53:06	-22	0.0	8.37	0.0				
08/22/2009	06:53:07					Pumping 20 bbls of CW-7.			
08/22/2009	06:53:07					Good returns.			
08/22/2009	06:53:07					Pumping 30 bbls. of mudpush.			
08/22/2009	06:53:07					Good returns.			
08/22/2009	06:53:07	-22	0.0	8.37	0.0				
08/22/2009	06:55:01	-18	16.0	8.37	0.7				
08/22/2009	07:00:01	137	2.1	8.37	3.6				

Well EFH32D-10N-C29-595-1			Field N. Parachute		Job Start Aug/22/2009	Customer EnCana	Job Number B708-00002
Date	Time 24-hr clock	Treating Pressure PSI	Flow Rate B/M	Density LB/G	Volume BBL	Message	
08/22/2009	07:10:01	68	1.5	15.82	146.0		
08/22/2009	07:11:05					Start Cement Slurry	
08/22/2009	07:11:05	196	3.2	13.05	0.7		
08/22/2009	07:11:06					Start Mixing Scav Slurry	
08/22/2009	07:11:06	196	3.2	13.05	0.8		
08/22/2009	07:11:08					End Spacer	
08/22/2009	07:11:08	255	3.6	13.03	0.9		
08/22/2009	07:11:13					Pumped total of 50 bbls. of spacer.	
08/22/2009	07:11:13					Good returns.	
08/22/2009	07:11:13	314	261.1	12.97	7.6		
08/22/2009	07:12:47					End Scavenger Slurry	
08/22/2009	07:12:47					Start Mixing Lead Slurry	
08/22/2009	07:12:47	599	11.4	12.34	156.4		
08/22/2009	07:15:01	512	8.0	12.17	175.1		
08/22/2009	07:20:01	392	8.1	12.00	218.3		
08/22/2009	07:25:01	289	8.1	12.13	259.0		
08/22/2009	07:29:09					Started mixing lead slurry.	
08/22/2009	07:29:09	294	8.1	12.08	293.8		
08/22/2009	07:30:01	306	8.1	12.06	302.5		
08/22/2009	07:35:01	209	6.4	11.97	356.0		
08/22/2009	07:40:01	349	8.4	12.13	18250.1		
08/22/2009	07:45:01	72	3.6	11.93	18304.1		
08/22/2009	07:45:26					End Lead Slurry	
08/22/2009	07:45:26	72	3.3	12.42	18305.5		
08/22/2009	07:45:37					Started pumping tail slurry.	
08/22/2009	07:45:37	39	2.3	12.58	18305.9		
08/22/2009	07:45:38					Good returns.	
08/22/2009	07:45:38	39	2.3	12.59	18306.0		
08/22/2009	07:50:01	447	8.2	13.04	18344.3		
08/22/2009	07:50:53					End Tail Slurry	
08/22/2009	07:50:53	496	8.3	12.97	18356.0		
08/22/2009	07:50:54					End Cement Slurry	
08/22/2009	07:50:54	493	8.3	12.97	18356.2		
08/22/2009	07:50:59					Pumped 270 bbls. of 12.0 ppg. lead.	
08/22/2009	07:50:59					Pumped 34 bbls. of 13.0 tail.	
08/22/2009	07:50:59					Good returns.	
08/22/2009	07:50:59	100	0.0	15.65	18356.7		
08/22/2009	07:51:04					Drop Top Plug	
08/22/2009	07:51:04	-13	0.0	25.00	18356.7		
08/22/2009	07:51:07					Start Displacement	
08/22/2009	07:51:07	-13	0.0	25.00	18356.7		
08/22/2009	07:55:01	78	4.6	9.38	13.1		
08/22/2009	08:00:01	213	8.2	8.43	47.5		
08/22/2009	08:03:44					Started displacement with fresh water.	
08/22/2009	08:03:44					Good returns.	
08/22/2009	08:03:44	203	7.8	8.13	76.6		
08/22/2009	08:05:01	170	7.7	8.07	87.1		
08/22/2009	08:10:01	216	8.3	8.37	127.2		
08/22/2009	08:15:01	297	6.4	8.37	175.5		
08/22/2009	08:20:01	742	8.2	8.37	223.2		
08/22/2009	08:25:01	944	235.5	8.37	264.0		
08/22/2009	08:30:01	1188	8.1	8.37	322.0		
08/22/2009	08:35:01	1169	4.5	8.37	8874.6		
08/22/2009	08:40:01	1081	2.1	8.37	8900.4		

Well			Field		Job Start		Customer		Job Number	
EFH32D-10N-C29-595-1			N. Parachute		Aug/22/2009		EnCana		B708-00002	
Date	Time 24-hr clock	Treating Pressure PSI	Flow Rate B/M	Density LB/G	Volume BBL	Message				
08/22/2009	08:46:20					Bump Top Plug				
08/22/2009	08:46:20	1201	0.0	8.37	9262.5					
08/22/2009	08:46:21					End Displacement				
08/22/2009	08:46:21	1140	0.0	8.37	9262.5					
08/22/2009	08:46:23					Bumped plug to 1455 psi.				
08/22/2009	08:46:23					Final displacement was 316 bbls.				
08/22/2009	08:46:23					Good returns. for all of the job.				
08/22/2009	08:46:23					Bled off pressure .				
08/22/2009	08:46:23	1033	0.0	8.37	9262.5					
08/22/2009	08:46:24					Floats held.				
08/22/2009	08:46:24					Got 1.5 bbls. back.				
08/22/2009	08:46:24					No cement to surface.				
08/22/2009	08:46:24	1005	0.0	8.37	9262.5					
08/22/2009	08:46:28					End Job				
08/22/2009	08:46:28	831	0.0	8.37	9262.5					
08/22/2009	08:50:01	-18	0.0	8.28	9279.2					

Post Job Summary

Average Pump Rates, bbl/min					Volume of Fluid Injected, bbl			
Slurry 7.0	N2	Mud	Maximum Rate 8.0	Total Slurry 304.0	Mud	Spacer 50.0	N2	
Treating Pressure Summary, psi					Breakdown Fluid			
Maximum 4000	Final 1455	Average 300	Bump Plug to 1455	Breakdown	Type	Volume	Density	
Avg. N2 Percent	Designed Slurry Volume 304.0 bbl	Displacement 317.0 bbl	Mix Water Temp 70 degF	Cement Circulated to Surface? <input type="checkbox"/>		Volume		
				Washed Thru Perfs <input type="checkbox"/>		To		
Customer or Authorized Representative Curt Childers.			Schlumberger Supervisor Jeff Patterson			Circulation Lost <input type="checkbox"/> Job Completed <input checked="" type="checkbox"/>		
			-			-		