

SLAWSON COMPANIES
1675 BROADWAY STE 1600
DENVER, Colorado

Whipsaw 18-11-66

White Mountain Preset 1

Post Job Summary

Cement Surface Casing

Prepared for:
Date Prepared:
Version: 1

Andy Peterson
11/17/2010

Service Supervisor: Justin Wheeler

Submitted by: Wes Aaron

HALLIBURTON

HALLIBURTON

Service Supervisor Reports

Job Log

Date/Time	Chart #	Activity Code	Pump Rate	Cum Vol	Pump		Pressure (psig)	Comments
11/15/2010 01:00		Arrive At Loc						
11/15/2010 01:30		Safety Meeting - Pre Rig-Up						
11/15/2010 02:58		Test Lines						
11/15/2010 02:58		Pump Spacer	2	50			95.0	Pump Fresh Water
11/15/2010 03:09		Pump Lead Cement	6	155			250.0	Mix and Pump 515 sks HLC Cement @ 13.1 lb/gal
11/15/2010 03:44		Pump Tail Cement	5	47			150.0	Mix and Pump 220 sks Type I,II Cement @ 15.6 lb/gal
11/15/2010 03:55		Drop Top Plug						
11/15/2010 03:57		Pump Displacement - Start	7	0			155.0	
11/15/2010 04:07		Cement Returns to Surface	7	70			375.0	70 bbls Cement to Pit
11/15/2010 04:21		Pump Displacement - End	3	140.3			670.0	Good Returns Throughout Job
11/15/2010 04:21		Bump Plug	3	140.3			1090.0	
11/15/2010 04:23		Shut In Well					675.0	Shut-In Well, No Float in Hole
11/15/2010 05:00		Safety Meeting - Pre Rig-Down						
11/15/2010 05:30		Safety Meeting - Departing Location						
11/15/2010 23:30		Depart from Service Center or Other Site						

The Road to Excellence Starts with Safety

Sold To #: 305440		Ship To #: 2819484		Quote #:		Sales Order #: 7773697	
Customer: SLAWSON COMPANIES				Customer Rep:			
Well Name: Whipsaw			Well #: 18-11-66			API/UWI #:	
Field: WILDCAT		City (SAP): GROVER		County/Parish: Weld		State: Colorado	
Contractor: White Mountain Preset			Rig/Platform Name/Num: White Mountain 1				
Job Purpose: Cement Surface Casing							
Well Type: Development Well			Job Type: Cement Surface Casing				
Sales Person: FLING, MATTHEW			Srvc Supervisor: WHEELER, JUSTIN			MBU ID Emp #: 196470	

Job Personnel

HES Emp Name	Exp Hrs	Emp #	HES Emp Name	Exp Hrs	Emp #	HES Emp Name	Exp Hrs	Emp #
FLYNN, SHAD Michael		476484	SNYDER, JONATHAN Leroy		435616	WHEELER, JUSTIN W		196470
WILEY, JAMES A		440080						

Equipment

HES Unit #	Distance-1 way	HES Unit #	Distance-1 way	HES Unit #	Distance-1 way	HES Unit #	Distance-1 way
10867419C	75 mile	10948694	75 mile	10988836C	75 mile	11526488	75 mile
11527037	75 mile	11542778	75 mile				

Job Hours

Date	On Location Hours	Operating Hours	Date	On Location Hours	Operating Hours	Date	On Location Hours	Operating Hours
TOTAL	Total is the sum of each column separately							

Job

Job Times

Formation Name								
Formation Depth (MD)	Top	Bottom			Called Out	Date	Time	Time Zone
Form Type		BHST			On Location	15 - Nov - 2010	01:00	MST
Job depth MD	1854. ft	Job Depth TVD	1854. ft		Job Started	15 - Nov - 2010	02:57	MST
Water Depth		Wk Ht Above Floor			Job Completed	15 - Nov - 2010	04:25	MST
Perforation Depth (MD)	From	To			Departed Loc	15 - Nov - 2010	05:30	MST

Well Data

Description	New / Used	Max pressure psig	Size in	ID in	Weight lbm/ft	Thread	Grade	Top MD ft	Bottom MD ft	Top TVD ft	Bottom TVD ft
Open Hole				13.5				.	1864.	.	.
Surface Casing	New		9.625	8.921	36.		J-55	.	1854.	.	.

Sales/Rental/3rd Party (HES)

Description	Qty	Qty uom	Depth	Supplier
PLUG,CMTG,TOP,9 5/8,HWE,8.16 MIN/9.06 MA	1	EA		

Tools and Accessories

Type	Size	Qty	Make	Depth	Type	Size	Qty	Make	Depth	Type	Size	Qty	Make
Guide Shoe					Packer					Top Plug			
Float Shoe					Bridge Plug					Bottom Plug			
Float Collar					Retainer					SSR plug set			
Insert Float										Plug Container			
Stage Tool										Centralizers			

Miscellaneous Materials

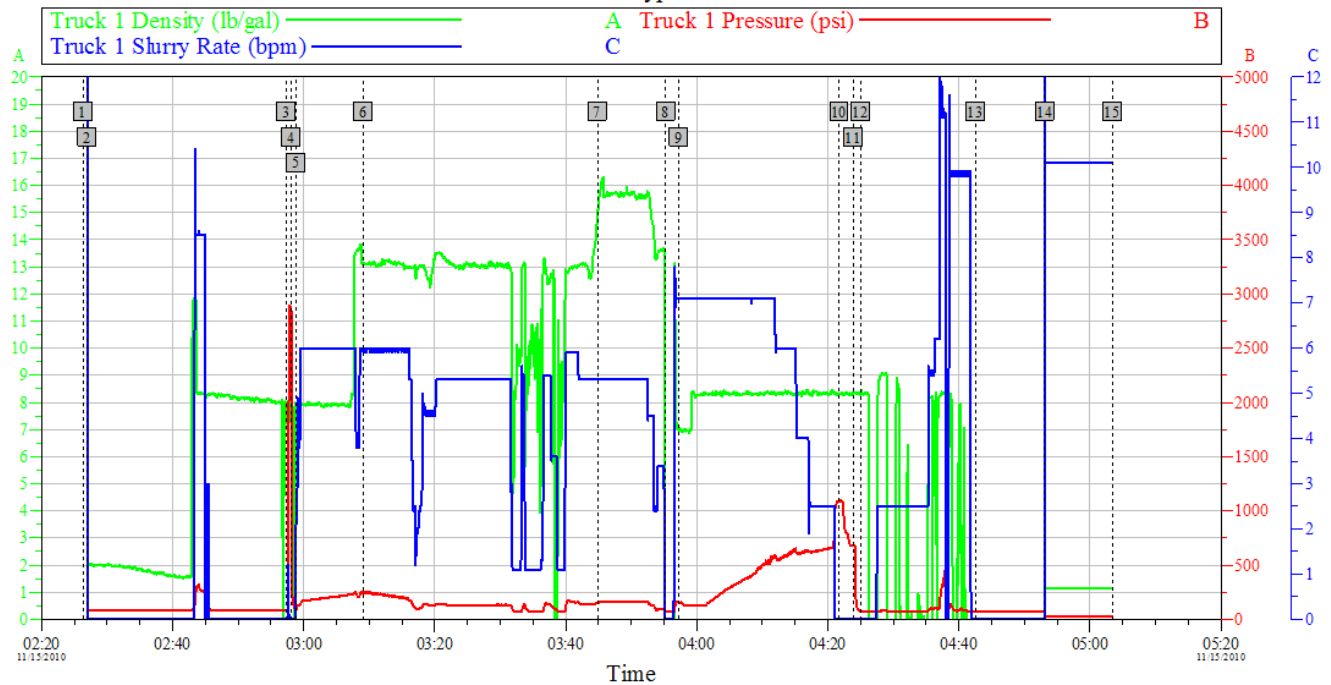
Gelling Agt	Conc	Surfactant	Conc	Acid Type	Qty	Conc	%
-------------	------	------------	------	-----------	-----	------	---

Treatment Fld		Conc		Inhibitor		Conc		Sand Type		Size		Qty	
Fluid Data													
Stage/Plug #: 1													
Fluid #	Stage Type	Fluid Name			Qty	Qty uom	Mixing Density lbm/gal	Yield ft ³ /sk	Mix Fluid Gal/sk	Rate bbl/min	Total Mix Fluid Gal/sk		
1	Dyed Water Spacer					bbl	8.4	.0	42.0	5.0			
2	Lead Cement 13.1#				515.0	sacks	13.1	1.69	8.64	5.0	8.64		
3 %		CALCIUM CHLORIDE, PELLET, 50 LB (101509387)											
0.125 lbm		POLY-E-FLAKE (101216940)											
8.64 Gal		FRESH WATER											
3	Tail Cement 15.8#	CMT - STANDARD TYPE I / II CEMENT (101439798)			220.0	sacks	15.6	1.2	5.24	5.0	5.24		
94 lbm		TYPE I / II CEMENT, BULK (101439798)											
2 %		CALCIUM CHLORIDE, PELLET, 50 LB (101509387)											
0.125 lbm		POLY-E-FLAKE (101216940)											
5.24 Gal		FRESH WATER											
Calculated Values		Pressures			Volumes								
Displacement		Shut In: Instant				Lost Returns		Cement Slurry			Pad		
Top Of Cement		5 Min				Cement Returns		Actual Displacement			Treatment		
Frac Gradient		15 Min				Spacers		Load and Breakdown			Total Job		
Rates													
Circulating		Mixing				Displacement		Avg. Job					
Cement Left In Pipe	Amount	41 ft	Reason	Shoe Joint									
Frac Ring # 1 @	ID		Frac ring # 2 @	ID		Frac Ring # 3 @	ID		Frac Ring # 4 @	ID			
The Information Stated Herein Is Correct					Customer Representative Signature								

HALLIBURTON

Customer Name - Well Name

Job Type



Global Event Log														
Intersection		T1P	T1SR	Intersection		T1P	T1SR	Intersection		T1P	T1SR			
1	Zero Sand Total	02:26:19	0.000	17.00	2	Starting Job	02:26:58	0.000	17.00	3	Start Job	02:57:21	79.00	0.000
4	Test Lines	02:58:07	2541	0.000	5	Pump Fresh Water	02:58:54	94.20	2.240	6	Pump Lead Cement	03:09:05	252.8	6.000
7	Pump Tail Cement	03:44:50	149.9	5.300	8	Drop Plug	03:55:16	76.85	0.000	9	Pump Displacement	03:57:17	156.0	7.100
10	Bump Plug	04:21:45	1091	0.000	11	Shut-In Well	04:23:51	676.0	0.000	12	End Job	04:24:59	76.17	0.000
13	End Job	04:42:30	74.00	0.000	14	Start Job	04:53:07	56.67	151.4	15	Ending Job	05:03:29	31.00	10.10

Customer:
Well Description:

Job Date: 15-Nov-2010
UWI:

Sales Order #: 7773697

OptiCem v6.4.9
15-Nov-10 05:07