

ENCANA OIL & GAS (USA) INC. - EBUS
DO NOT MAIL-3601 N STAGECOACH RD
LONGMONT, Colorado

Dier 4-4-8

ENSIGN #122

Post Job Summary

Cement Surface Casing

Prepared for:	Kevin Brakovec
Date Prepared:	7/12/2010
Version: 1	

Service Supervisor: Irv Collins

Submitted by: Wes Aaron

HALLIBURTON

HALLIBURTON

Service Supervisor Reports

Job Log

Date/Time	Chart #	Activity Code	Pump Rate	Cum Vol	Pump	Pressure (psig)	Comments
07/07/2010 05:29		Arrive At Loc					
07/07/2010 05:29		Safety Meeting					
07/07/2010 08:12		Test Lines				1878.0	
07/07/2010 08:14		Pump Spacer 1	4	20		54.0	RIG WATER MIXED WITH RED DYE
07/07/2010 08:21		Pump Cement	5	75		128.0	280SK'S OF SWIFTCEM AT 14.2# MIXED WITH RIG WATER
07/07/2010 08:36		Shutdown					
07/07/2010 08:37		Drop Top Plug					
07/07/2010 08:37		Pump Displacement	5	50		43.0	BUMPED PLUG AROUND 300 psi
07/07/2010 08:53		Shut In Well					
07/07/2010 08:53		End Job					CMT to Surface 30 bbls into displacemnet

The Road to Excellence Starts with Safety

Sold To #: 340078	Ship To #: 2793725	Quote #:	Sales Order #: 7484774
Customer: ENCANA OIL & GAS (USA) INC. - EBUS		Customer Rep: Hope, Craig	
Well Name: Dier	Well #: 4-4-8	API/UWI #:	
Field: WATTENBERG	City (SAP): FIRESTONE	County/Parish: Weld	State: Colorado
Contractor: ENSIGN		Rig/Platform Name/Num: # 122	
Job Purpose: Cement Surface Casing			
Well Type: Development Well		Job Type: Cement Surface Casing	
Sales Person: FLING, MATTHEW		Srvc Supervisor: COLLINS, IRVIN	MBU ID Emp #: 401749

Job Personnel

HES Emp Name	Exp Hrs	Emp #	HES Emp Name	Exp Hrs	Emp #	HES Emp Name	Exp Hrs	Emp #
AARON, WESLEY J		403606	COLLINS, IRVIN Douglas		401749	GIBBS, JASON Edwin		300487
HUFF, DAVID Randall		468612	MILLER, GEOFFREY Alan		460232	VASQUEZ, ALVARO A		401745

Equipment

HES Unit #	Distance-1 way	HES Unit #	Distance-1 way	HES Unit #	Distance-1 way	HES Unit #	Distance-1 way
11019824C	15 mile	11142998	15 mile	11488570C	15 mile		

Job Hours

Date	On Location Hours	Operating Hours	Date	On Location Hours	Operating Hours	Date	On Location Hours	Operating Hours
TOTAL			<i>Total is the sum of each column separately</i>					

Job

Job Times

Formation Name	Formation Depth (MD)	Top	Bottom	Called Out	Date	Time	Time Zone
					07 - Jul - 2010	05:30	MST
Form Type		BHST		On Location	07 - Jul - 2010	07:30	MST
Job depth MD	825. ft	Job Depth TVD	825. ft	Job Started	07 - Jul - 2010	08:12	MST
Water Depth		Wk Ht Above Floor	4. ft	Job Completed	07 - Jul - 2010	08:54	MST
Perforation Depth (MD)	From	To		Departed Loc	07 - Jul - 2010	09:30	MST

Well Data

Description	New / Used	Max pressure psig	Size in	ID in	Weight lbm/ft	Thread	Grade	Top MD ft	Bottom MD ft	Top TVD ft	Bottom TVD ft
Open Hole				12.25				.	835.		
Surface Casing	New		8.625	8.097	24.	8 RD	J-55	.	825.		

Tools and Accessories

Type	Size	Qty	Make	Depth	Type	Size	Qty	Make	Depth	Type	Size	Qty	Make
Guide Shoe					Packer					Top Plug			
Float Shoe					Bridge Plug					Bottom Plug			
Float Collar					Retainer					SSR plug set			
Insert Float										Plug Container			
Stage Tool										Centralizers			

Miscellaneous Materials

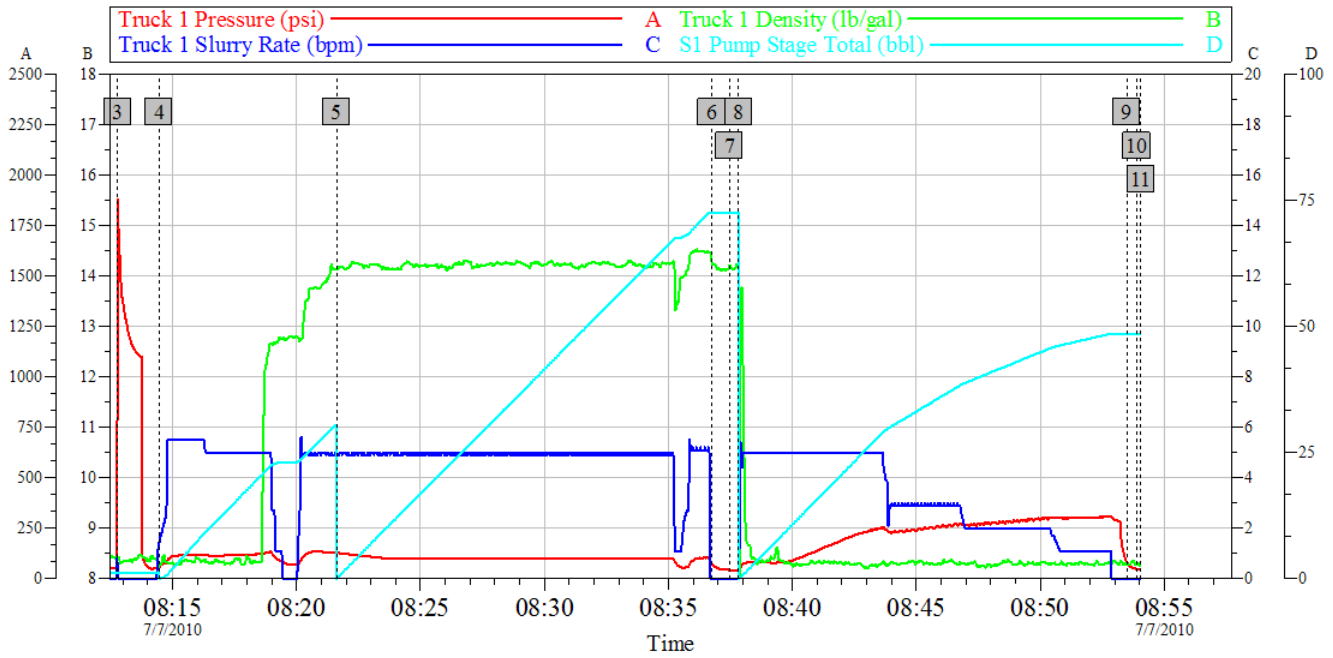
Gelling Agt	Conc	Surfactant	Conc	Acid Type	Qty	Conc %
Treatment Fld	Conc	Inhibitor	Conc	Sand Type	Size	Qty

Fluid Data									
Stage/Plug #: 1									
Fluid #	Stage Type	Fluid Name	Qty	Qty uom	Mixing Density lbm/gal	Yield ft ³ /sk	Mix Fluid Gal/sk	Rate bbl/min	Total Mix Fluid Gal/sk
1	Water Spacer		20.00	bbl	8.33	.0	.0	5.0	
2	Lead Cement	SWIFTCEM (TM) SYSTEM (452990)	280.0	sacks	14.2	1.51	7.53	5.0	7.53
7.53 Gal		FRESH WATER							
3	Water Displacement		50.00	bbl	8.33	.0	.0	5.0	
Calculated Values		Pressures		Volumes					
Displacement		Shut In: Instant		Lost Returns		Cement Slurry		Pad	
Top Of Cement		5 Min		Cement Returns		Actual Displacement		Treatment	
Frac Gradient		15 Min		Spacers		Load and Breakdown		Total Job	
Rates									
Circulating		Mixing		Displacement		Avg. Job			
Cement Left In Pipe	Amount	40 ft	Reason	Shoe Joint					
Frac Ring # 1 @	ID	Frac ring # 2 @	ID	Frac Ring # 3 @	ID	Frac Ring # 4 @	ID		
The Information Stated Herein Is Correct				Customer Representative Signature					

HALLIBURTON

ENCANA SURFACE

DIER 4-4-8



Global Event Log											
Intersection		T1P	Intersection		T1P	Intersection	T1P				
3	Test Lines	08:12:47	1878	4	Fresh Water Spacer	08:14:27	54.19	5	14.2 ppg SwiftCem B1	08:21:37	128.0
6	Shutdown	08:36:45	75.19	7	Drop Plug	08:37:28	43.00	8	Pump Displacement	08:37:50	43.07
9	Shut In Well	08:53:29	83.05	10	End Job	08:53:53	48.31	11	Ending Job	08:54:03	46.00

Customer: ENCANA	Job Date: 07-Jul-2010	Sales Order #: 7484774
Well Description: SURFACE	UWI: 05-123-30576-00	

OptiCem v6.4.2
07-Jul-10 08:59