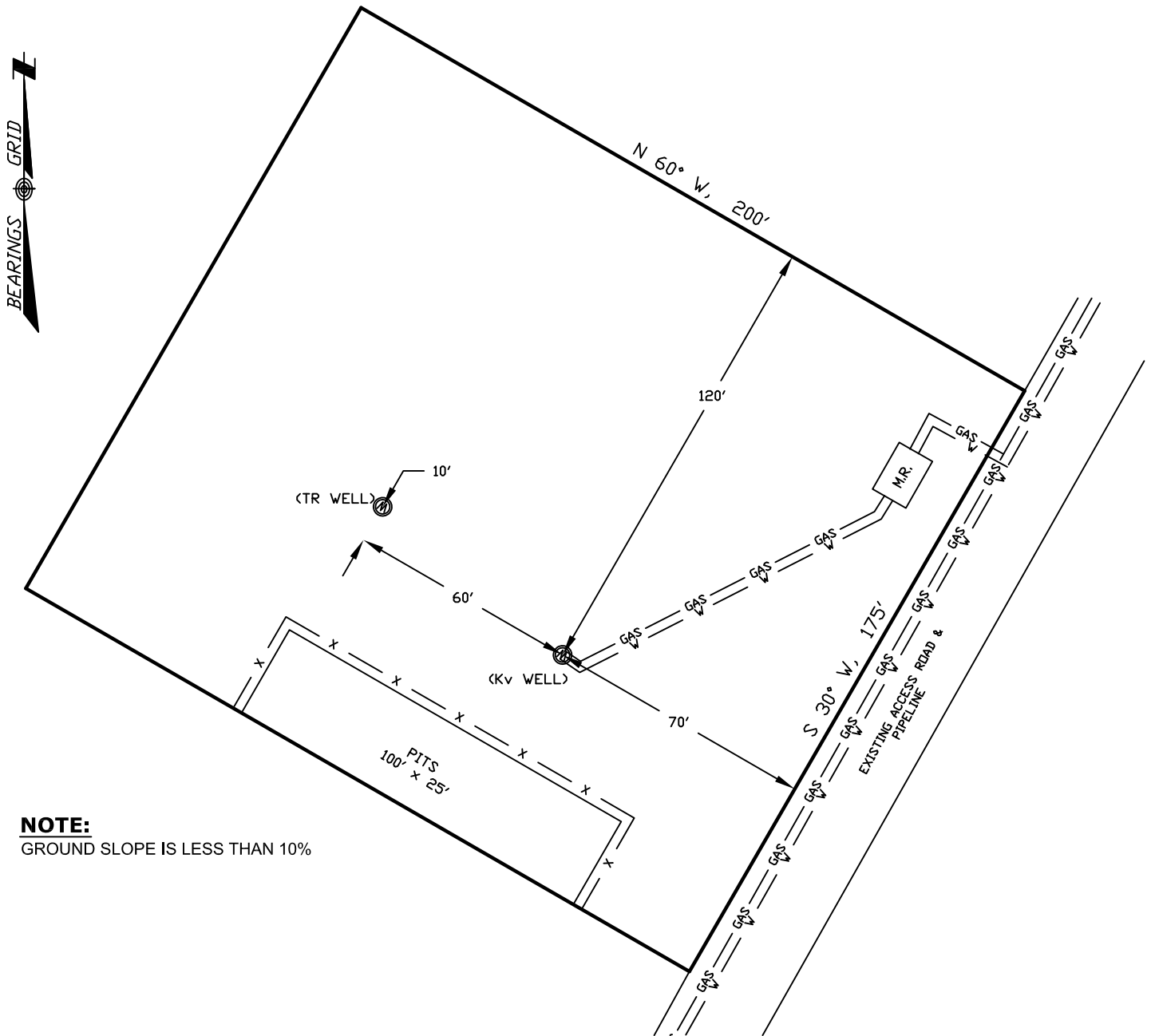


WELLSITE/PRODUCTION EQUIPMENT LAYOUT

OPERATOR: Pioneer Natural Resources

WELL NAME: Clave 43-11

NESE of SECTION 11 TOWNSHIP 33 S, RANGE 68 W OF THE 6TH P.M., IN LAS ANIMAS COUNTY



NOTE:

GROUND SLOPE IS LESS THAN 10%

NOTE:

MUD AND BLOW PITS WILL BE CONVERTED TO LINED EVAPORATION PITS FOR PRODUCTION.

WELLHEADS ARE TYPICALLY PCP DRIVE HEADS

GRAPHIC SCALE



(IN FEET)

1 inch = 40 ft.

LEGEND:



= WELLHEAD

= EXISTING WELLPAD

= FENCE (4 STRAND)

= 4" GAS GATHERING LINE

= 2" WATER LINE

M.R. = COMBO METER RUN AND WATER/GAS SEPARATOR

G.D.S. = GAS DRIVE SYSTEM

August 02, 2010

Date Platted

SHIELDS SURVEY L^{td}. C^o.
Raton, New Mexico 87740
(575)445-1232