

EOG RESOURCES, INC.
EASTMAN CREEK #04-28H
LOCATED IN WELD COUNTY, COLORADO
SECTION 28, T11N, R66W, 6th P.M.

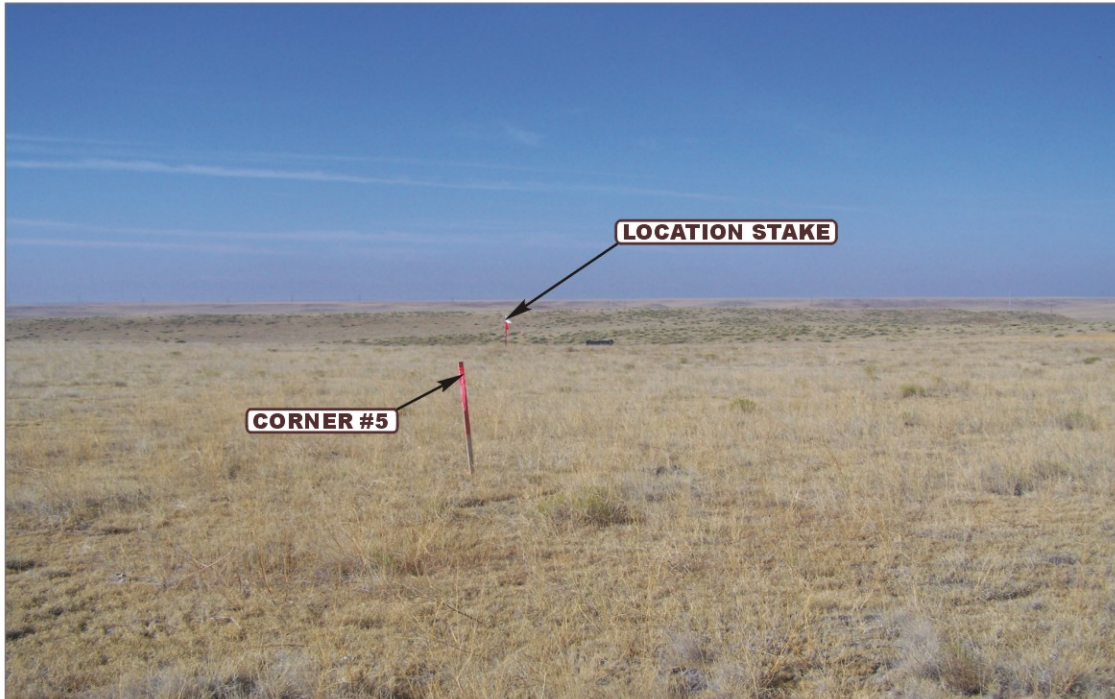


PHOTO: VIEW FROM CORNER #5 TO LOCATION STAKE

CAMERA ANGLE: SOUTHWESTERLY



PHOTO: VIEW FROM BEGINNING OF PROPOSED ACCESS

CAMERA ANGLE: WESTERLY



UELS Uintah Engineering & Land Surveying
85 South 200 East Vernal, Utah 84078
(435) 789-1017 * FAX (435) 789-1813

LOCATION PHOTOS

10 20 10
MONTH DAY YEAR

TAKEN BY: B.B.

DRAWN BY: J.J.

REVISED: 00-00-00

PHOTO
P1

EOG RESOURCES, INC.
EASTMAN CREEK #04-28H
LOCATED IN WELD COUNTY, COLORADO
SECTION 28, T11N, R66W, 6th P.M.



PHOTO: VIEW OF LOCATION STAKE

CAMERA ANGLE: NORTHERLY

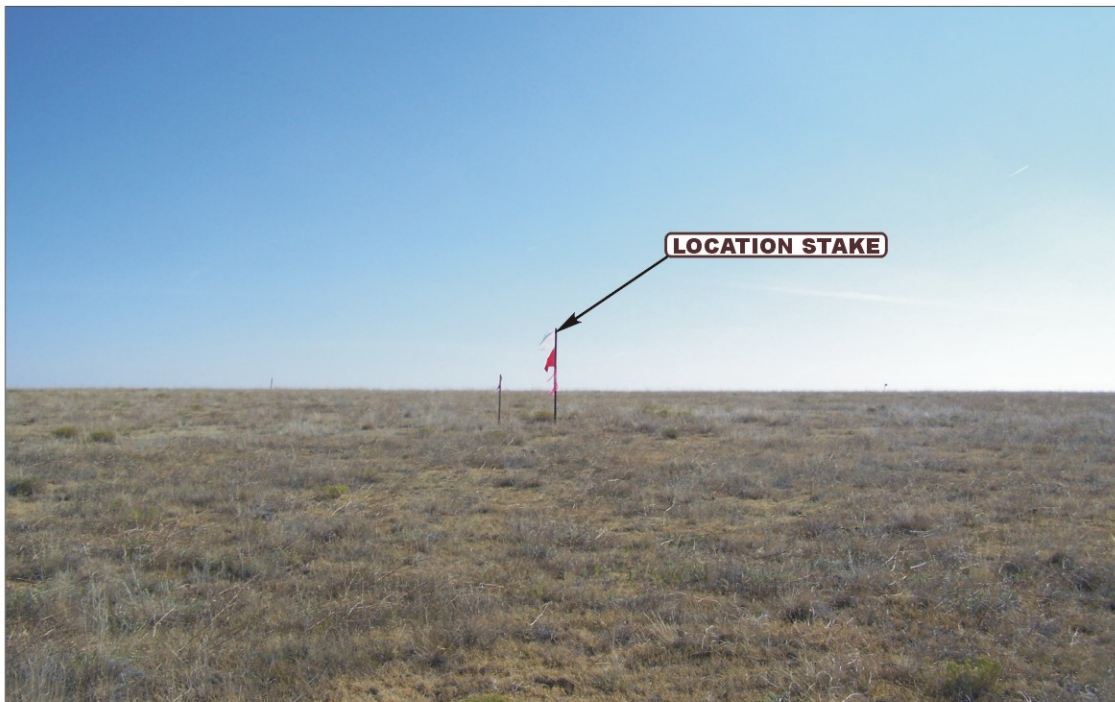


PHOTO: VIEW OF LOCATION STAKE

CAMERA ANGLE: EASTERLY



UELS Uintah Engineering & Land Surveying
85 South 200 East Vernal, Utah 84078
(435) 789-1017 * FAX (435) 789-1813

LOCATION PHOTOS

10 20 10
MONTH DAY YEAR

TAKEN BY: B.B.

DRAWN BY: J.J.

REVISED: 00-00-00

PHOTO
P2

EOG RESOURCES, INC.
EASTMAN CREEK #04-28H
LOCATED IN WELD COUNTY, COLORADO
SECTION 28, T11N, R66W, 6th P.M.



PHOTO: VIEW OF LOCATION STAKE

CAMERA ANGLE: SOUTHERLY



PHOTO: VIEW OF LOCATION STAKE

CAMERA ANGLE: WESTERLY



UELS Uintah Engineering & Land Surveying
85 South 200 East Vernal, Utah 84078
(435) 789-1017 * FAX (435) 789-1813

LOCATION PHOTOS

10 20 10
MONTH DAY YEAR

TAKEN BY: B.B.

DRAWN BY: J.J.

REVISED: 00-00-00

PHOTO
P3