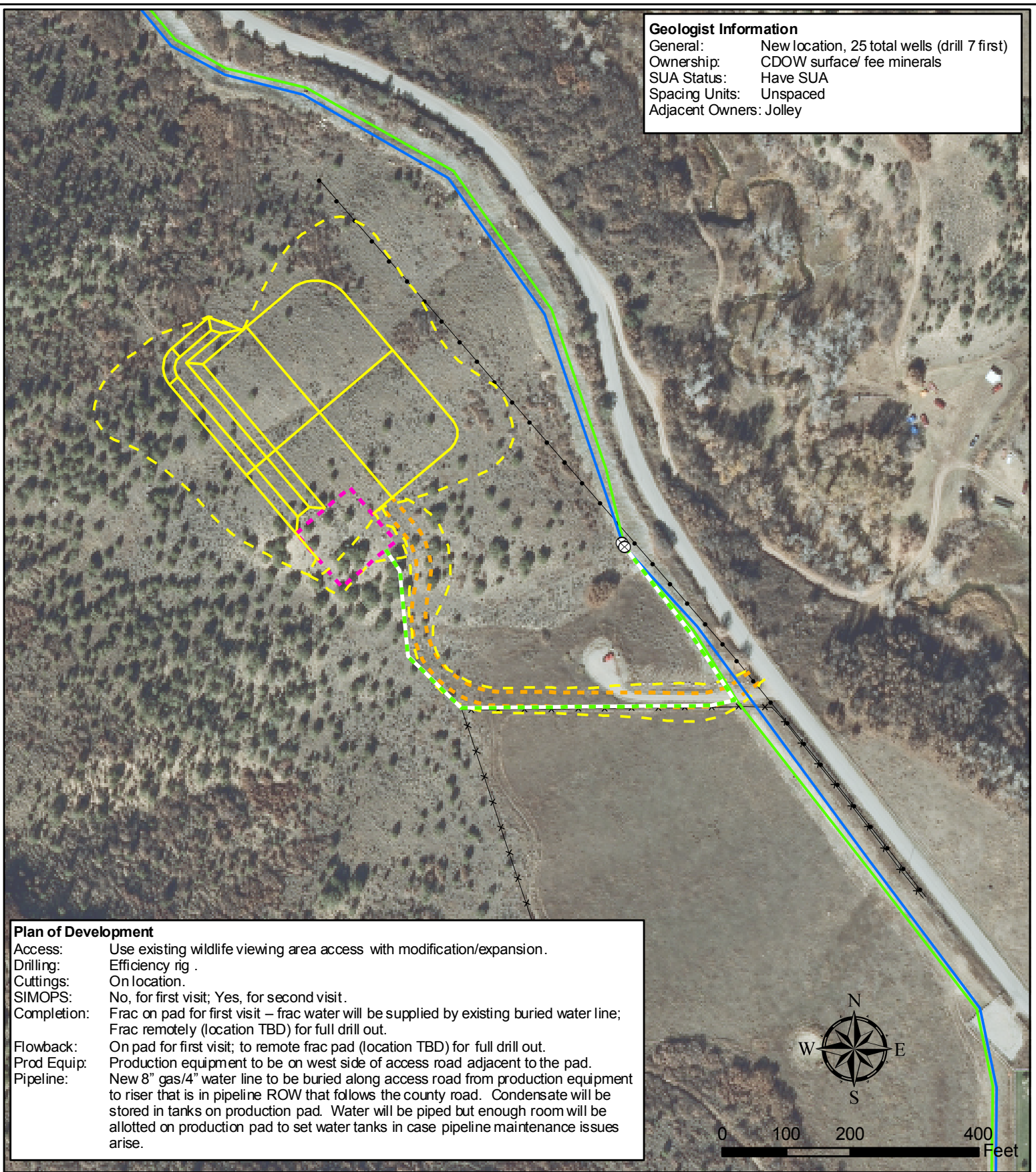
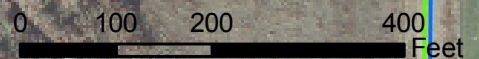


Geologist Information
 General: New location, 25 total wells (drill 7 first)
 Ownership: CDOW surface/ fee minerals
 SUA Status: Have SUA
 Spacing Units: Unspaced
 Adjacent Owners: Jolley



Plan of Development

Access: Use existing wildlife viewing area access with modification/expansion.
 Drilling: Efficiency rig .
 Cuttings: On location.
 SIMOPS: No, for first visit; Yes, for second visit.
 Completion: Frac on pad for first visit – frac water will be supplied by existing buried water line; Frac remotely (location TBD) for full drill out.
 Flowback: On pad for first visit; to remote frac pad (location TBD) for full drill out.
 Prod Equip: Production equipment to be on west side of access road adjacent to the pad.
 Pipeline: New 8" gas/4" water line to be buried along access road from production equipment to riser that is in pipeline ROW that follows the county road. Condensate will be stored in tanks on production pad. Water will be piped but enough room will be allotted on production pad to set water tanks in case pipeline maintenance issues arise.



Legend

- ⊗ Futures
- Proposed Pipeline Alignment
- Existing Water Line
- Existing Gas Line
- Proposed Road
- Proposed Production Equipment Area
- Proposed Daylight Line
- Proposed Pad or Pit
- Existing Overhead Electric
- Existing Fence

Williams Production RMT

KP 22-22 Plan of Development
 T6S R91W, Section 22

Date Prepared: December 1, 2010

