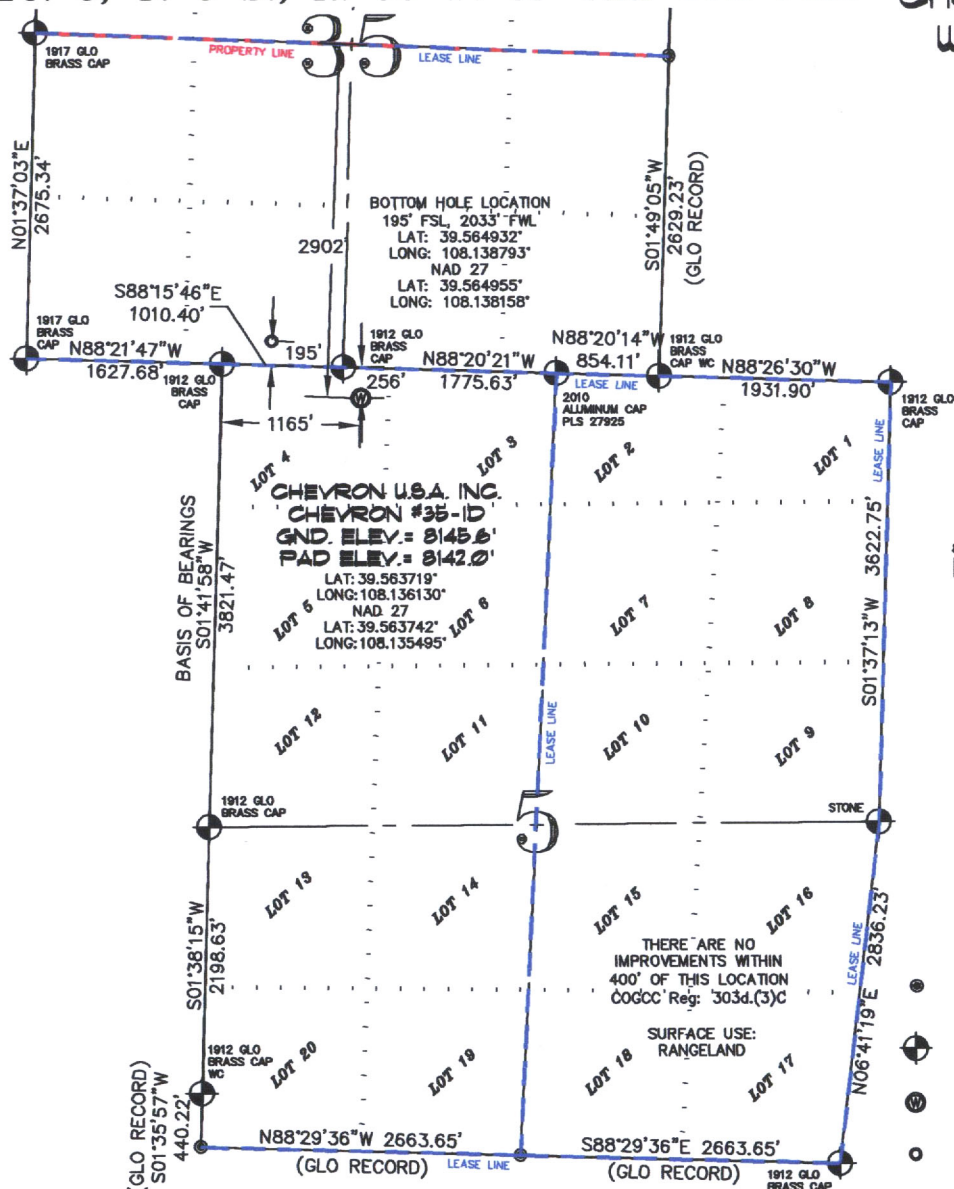


SEC. 5, T. 6 S., R. 96 W. OF THE 6TH P.M.

Chevron D5-696
Well Location



-LEGEND-

SECTION CORNER LOCATION
BASED ON GLO RECORD
INFORMATION

FIELD SURVEYED SECTION
CORNER LOCATIONS

FIELD SURVEYED WELL
LOCATION

CALCULATED BOTTOM
HOLE LOCATION

THIS WELL LOCATION PLAT WAS PREPARED FOR BERRY PETROLEUM COMPANY TO LOCATE THE CHEVRON #35-1D WELL, 256 FEET FROM THE NORTH LINE AND 1165 FEET FROM THE WEST LINE IN LOT 4 OF SECTION 5, T. 6 S., R. 96 W. OF THE 6TH P.M. GARFIELD COUNTY, COLORADO.

REFERENCE NOTES

- 1) T. 6 S., R. 96 W., 6TH P.M. GLO PLAT.
- 2) U.S.G.S. QUAD: CIRCLE DOT GULCH, CO
- 3) ELEVATIONS BASED ON N.A.V.D. 1988
- 4) LATITUDES AND LONGITUDES ARE BASED ON NAD 83, COLORADO CENTRAL ZONE.
- 5) GPS OPERATOR ROBERT WOOD, OBSERVED A PDOP OF 2.4.
- 6) ALL GPS OBSERVATIONS ARE IN COMPLIANCE WITH COGCC RULE NO. 215.
- 7) SURFACE AND BOTTOM HOLE LOCATIONS ARE MEASURED 90° FROM SECTION LINES.

SURVEYOR'S CERTIFICATE

I, George R. Bauer: a Professional Land Surveyor in the State of Colorado do hereby certify that this Survey was made under my direct supervision, and that this Plat represents said Survey.



COLORADO P.L.S. 27925



CONSTRUCTION SURVEYS, INC.
0012 SUNRISE BLVD.
SILT, CO 81652
(970)876-5753

VIEW: 1C

SURVEYED: 05/30/07	SCALE: 1" = 1600'
DRAFTED: 03/30/10	DWG: BERRY\CHEV_D5-696
CHECKED: 04/01/10	SHEET: 1 of 11