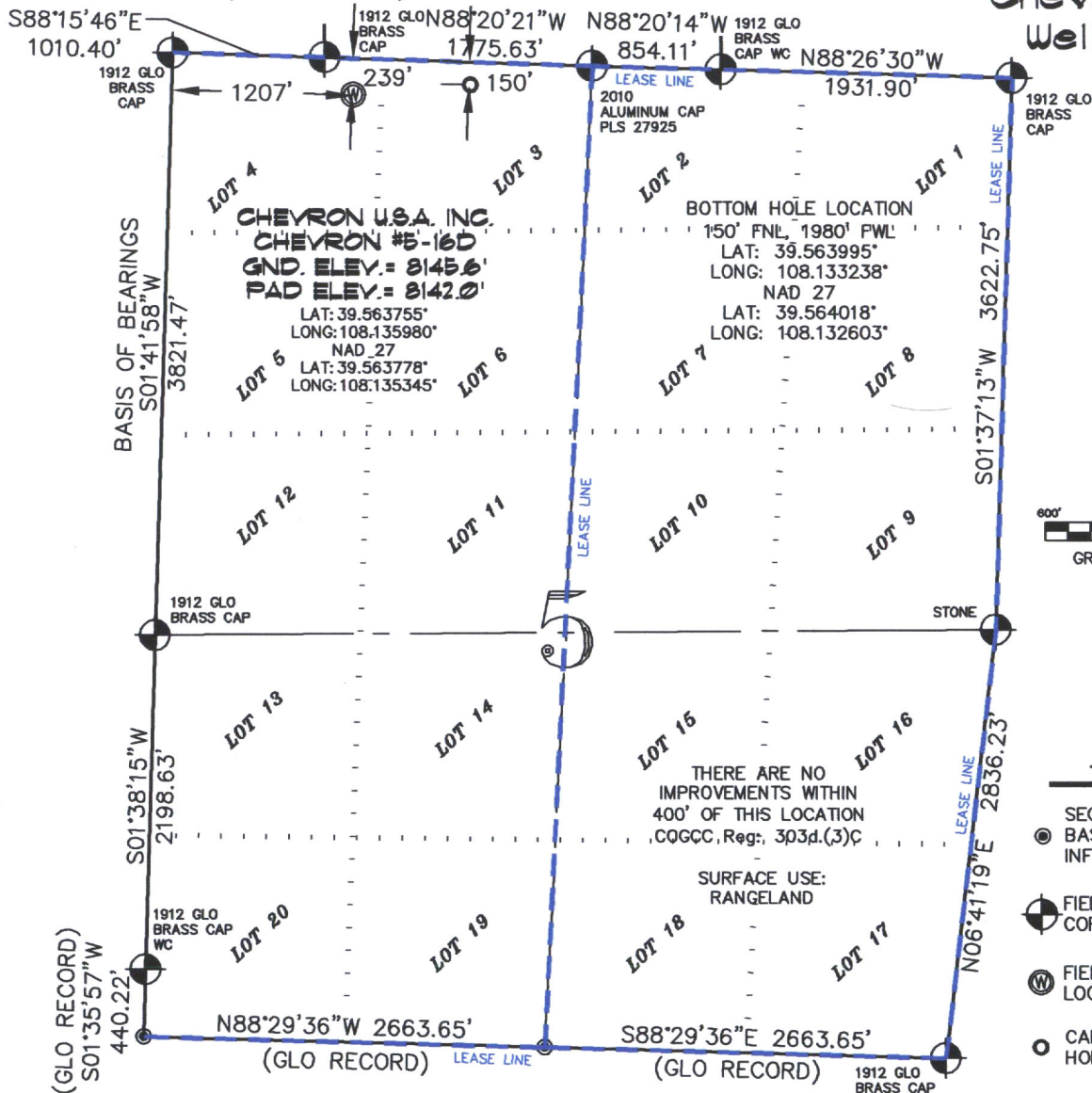


# SEC. 5, T. 6 S., R. 96 W. OF THE 6TH P.M.

Chevron D5-696  
Well Location



600' 0 1200'  
GRAPHIC SCALE IN FEET  
1 INCH = 1200 FEET

## -LEGEND-

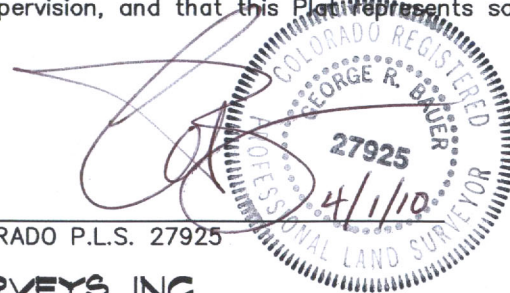
**THIS WELL LOCATION PLAT WAS PREPARED FOR BERRY PETROLEUM COMPANY TO LOCATE THE CHEVRON #5-16D WELL, 239 FEET FROM THE NORTH LINE AND 1207 FEET FROM THE WEST LINE IN LOT 4 OF SECTION 5, T. 6 S., R. 96 W. OF THE 6TH P.M. GARFIELD COUNTY, COLORADO.**

### REFERENCE NOTES

- 1) T. 6 S., R. 96 W., 6TH P.M. GLO PLAT.
- 2) U.S.G.S. QUAD: CIRCLE DOT GULCH, CO
- 3) ELEVATIONS BASED ON N.A.V.D. 1988
- 4) LATITUDES AND LONGITUDES ARE BASED ON NAD 83, COLORADO CENTRAL ZONE.
- 5) GPS OPERATOR ROBERT WOOD, OBSERVED A PDOP OF 2.4.
- 6) ALL GPS OBSERVATIONS ARE IN COMPLIANCE WITH COGCC RULE NO. 215.
- 7) SURFACE AND BOTTOM HOLE LOCATIONS ARE MEASURED 90° FROM SECTION LINES.

### SURVEYOR'S CERTIFICATE

I, George R. Bauer, a Professional Land Surveyor in the State of Colorado do hereby certify that this Survey was made under my direct supervision, and that this Plat represents said Survey.



COLORADO P.L.S. 27925



**CONSTRUCTION SURVEYS, INC.**  
0012 SUNRISE BLVD.  
SILT, CO 81652  
(970)876-5753

VIEW: 1H

|                    |                        |
|--------------------|------------------------|
| SURVEYED: 05/30/07 | SCALE: 1" = 1200'      |
| DRAFTED: 03/30/10  | DWG: BERRY\CHEV_D5-696 |
| CHECKED: 04/01/10  | SHEET: 1 of 11         |