



SUPERIOR
WELL SERVICES
Black Lick, Pa.
Mercer, Pa.
Wooster, Oh.
Cleveland, Ok.
Trinidad, Co.

CEMENT BOND LOG

Company Pioneer Natural Resources
Well Hill Climb 22-2
Field Purgatorie River
County Las Animas State CO

Location: API # : 05 071 08175 00

1820' FNL & 2193' FWL

SEC 2 TWP 33S RGE 67W

Permanent Datum Ground Level Elevation 7960'
Log Measured From Kelly Bushing 4' Above G.L.
Drilling Measured From Kelly Bushing

Elevation
K.B. 7522'
D.F. -----
G.L. 7518'

Date 12/18/06

Run Number	Three
Depth Driller	2338'
Depth Logger	1000'
Bottom Logged Interval	996'
Top Log Interval	Surface
Open Hole Size	7 7/8"
Type Fluid	water
Density / Viscosity	///
Max. Recorded Temp.	127 DEG F
Estimated Cement Top	Surface
Time Well Ready	ROA
Time Logger on Bottom	11:00
Equipment Number	T0702
Location	Trinidad
Recorded By	Larson
Witnessed By	Vince

Borehole Record		Tubing Record				
Bit	From	To	Size	Weight	From	To

Casing Record	Size	Wgt/Ft	Top	Bottom
Surface String	8 5/8"		00	522'
Prot. String				
Production String	5 1/2"		00	NA
Liner				

<<< Fold Here >>>

All interpretations are opinions based on inferences from electrical or other measurements and we cannot and do not guarantee the accuracy or correctness of any interpretation, and we shall not, except in the case of gross or willful negligence on our part, be liable or responsible for any loss, costs, damages, or expenses incurred or sustained by anyone resulting from any interpretation made by any of our officers, agents or employees. These interpretations are also subject to our general terms and conditions set out in our current Price Schedule.

Comments

Sarcillo Canyon Past McDonalds House to T turn left
drive thru CU location stay ao main rd. to Vermejo location
take hard left then 1st left to location



SUPERIOR
Black Lick, Pa.
Mercer, Pa.
Wooster, Oh.
Cleveland, Ok.
Trinidad, Co.

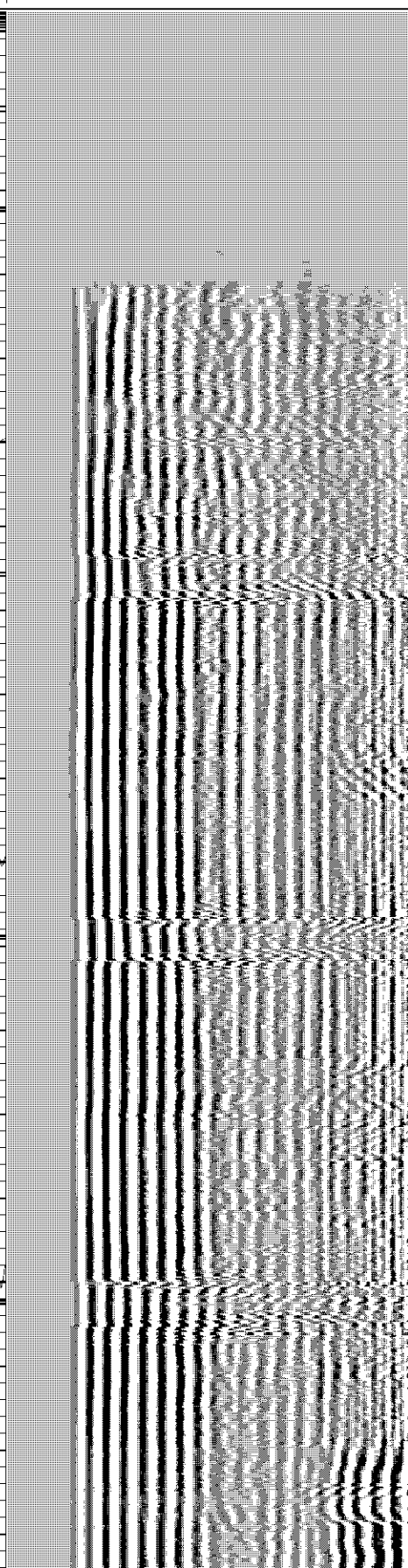
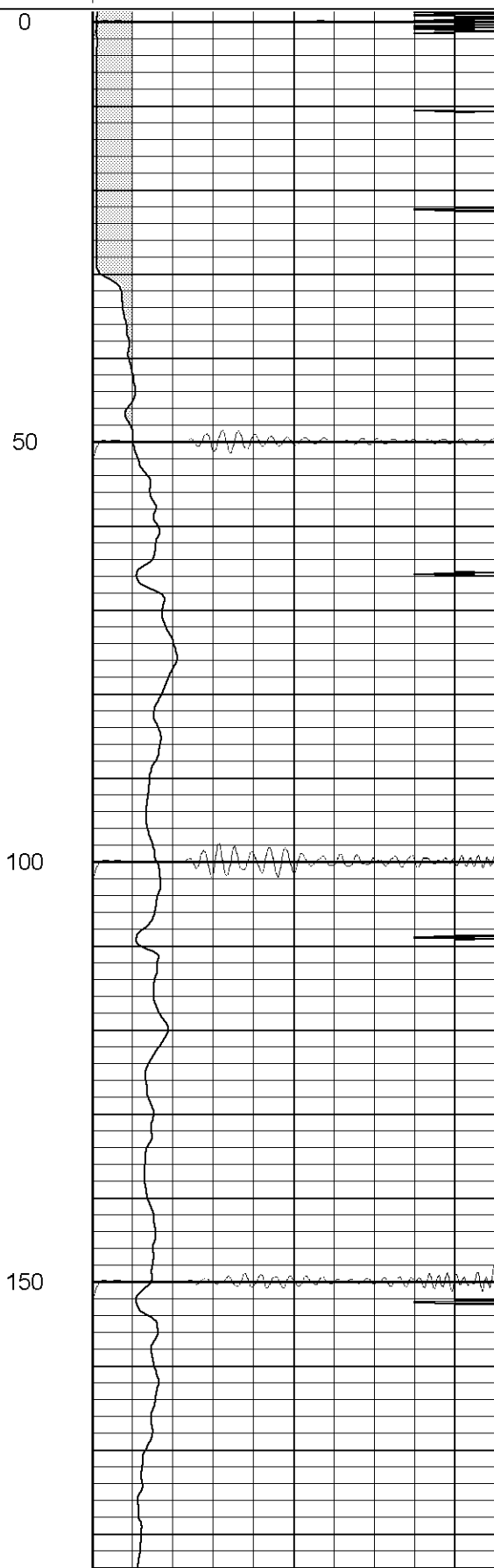
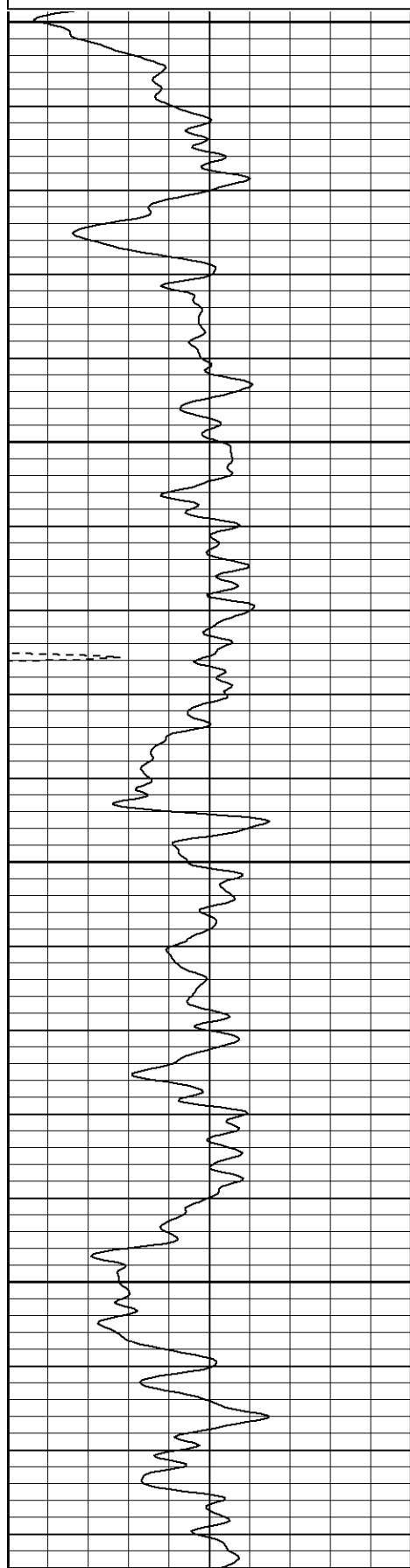
Main Pass

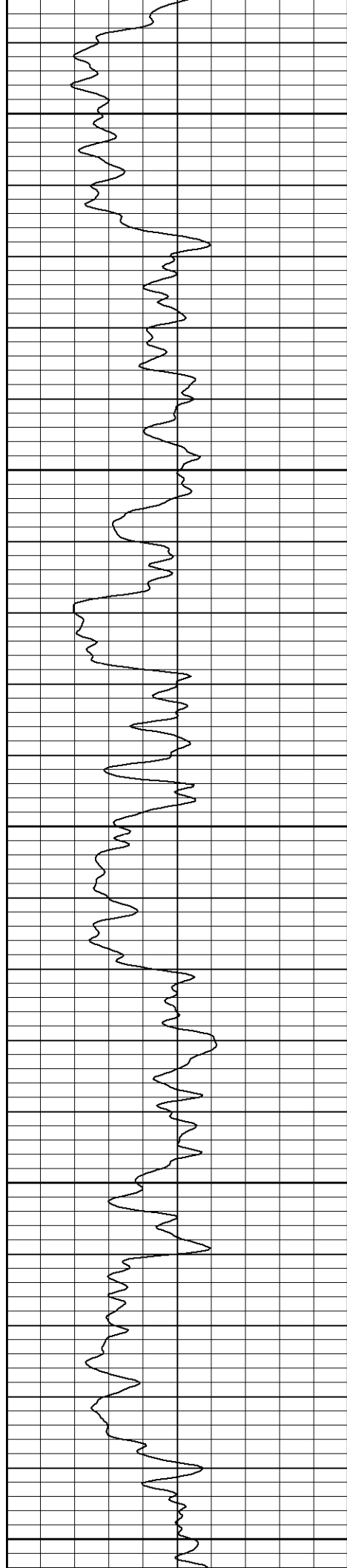
Database File: hillclimb121806b.db
Dataset Pathname: pass2.2
Presentation Format: cblrt
Dataset Creation: Mon Dec 18 13:11:36 2006 by Calc Warrior 7.0 STD Cas
Charted by: Depth in Feet scaled 1:240

0	GR (GAPI)	200
400	TT3 (usec)	200

0	AMP3 (mV)	100
18	CCL	-2
100	CBL5	1200

200	Variable Density	1200
-----	------------------	------





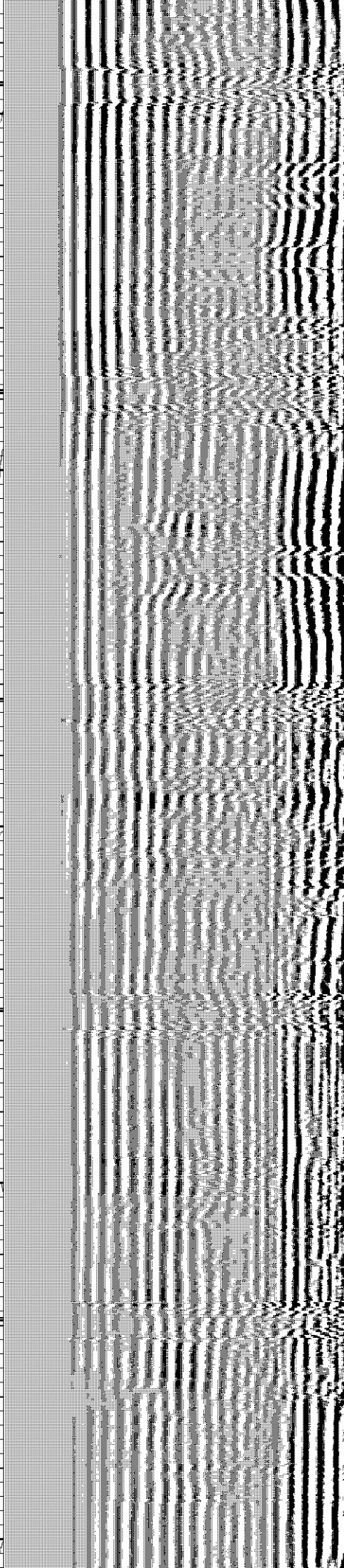
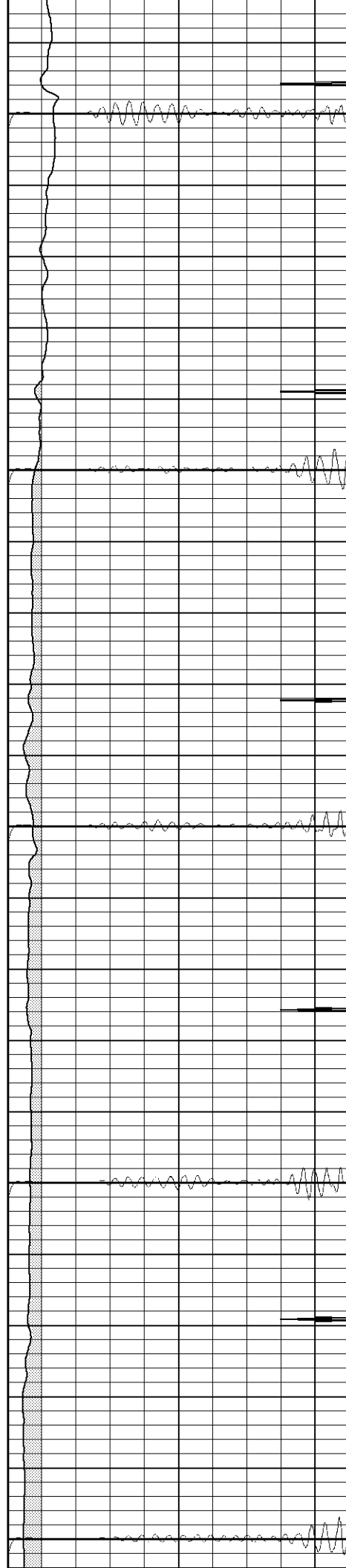
200

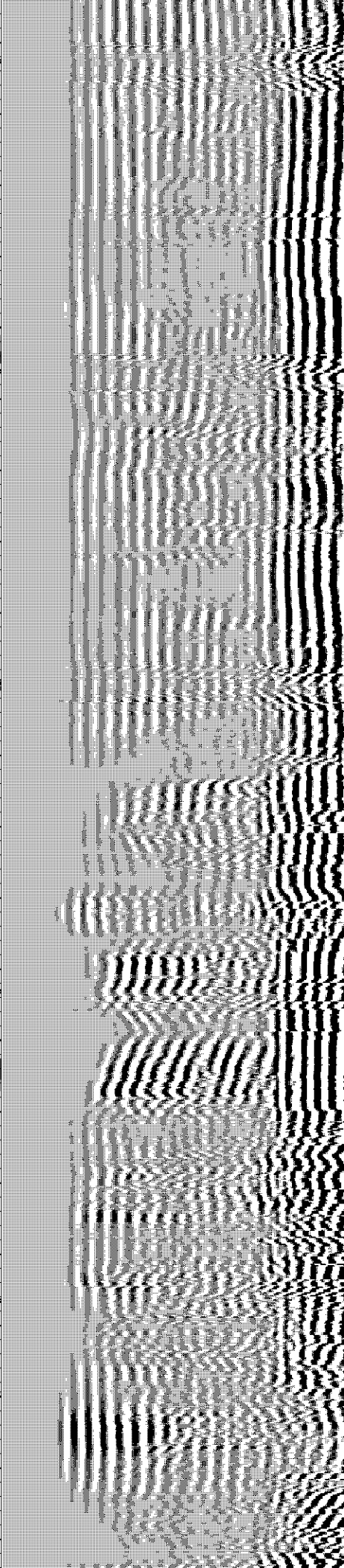
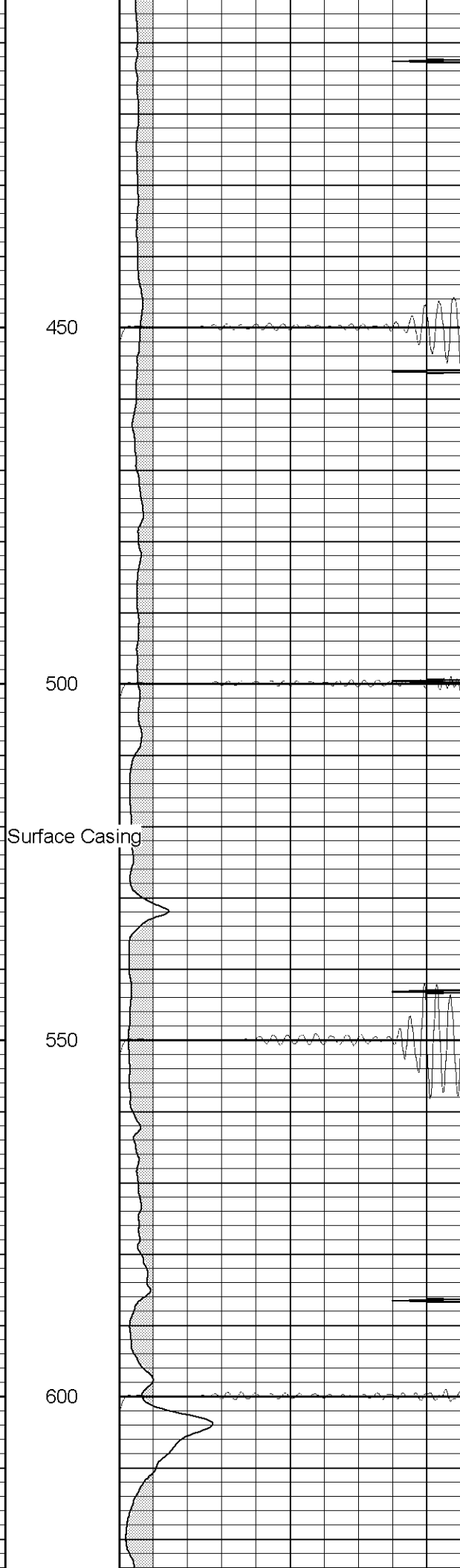
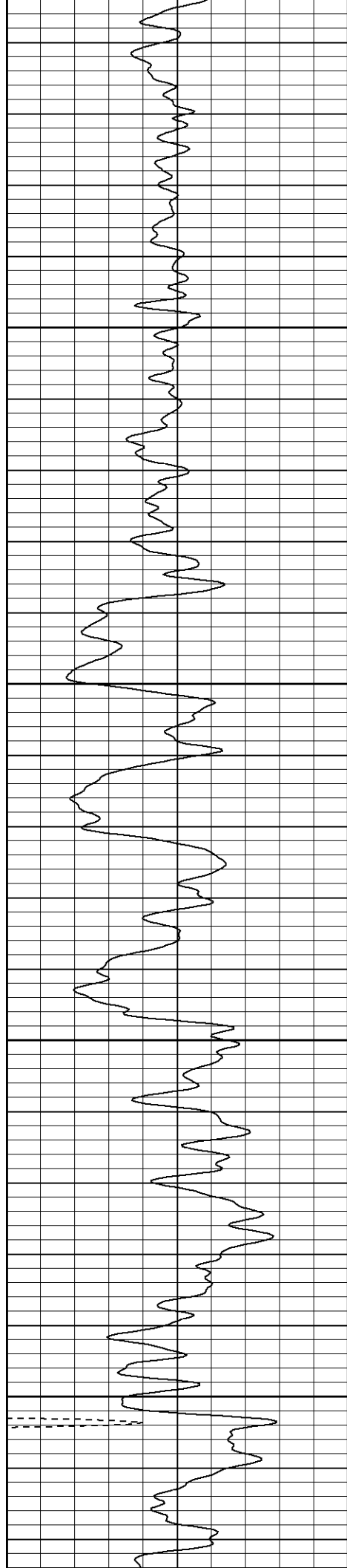
250

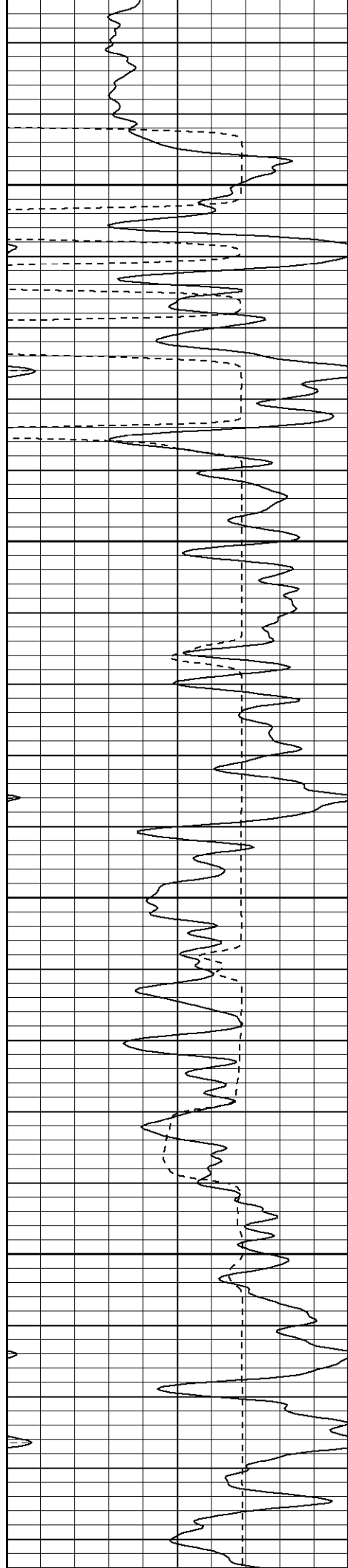
300

350

400





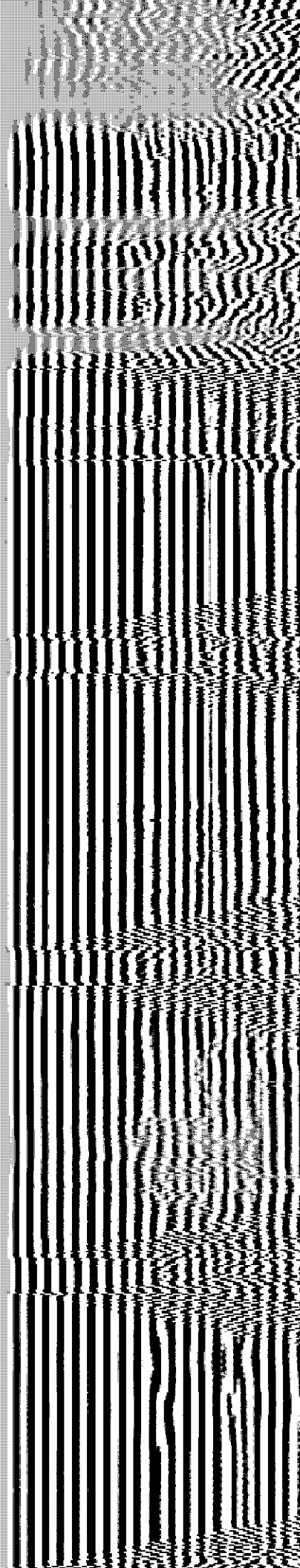
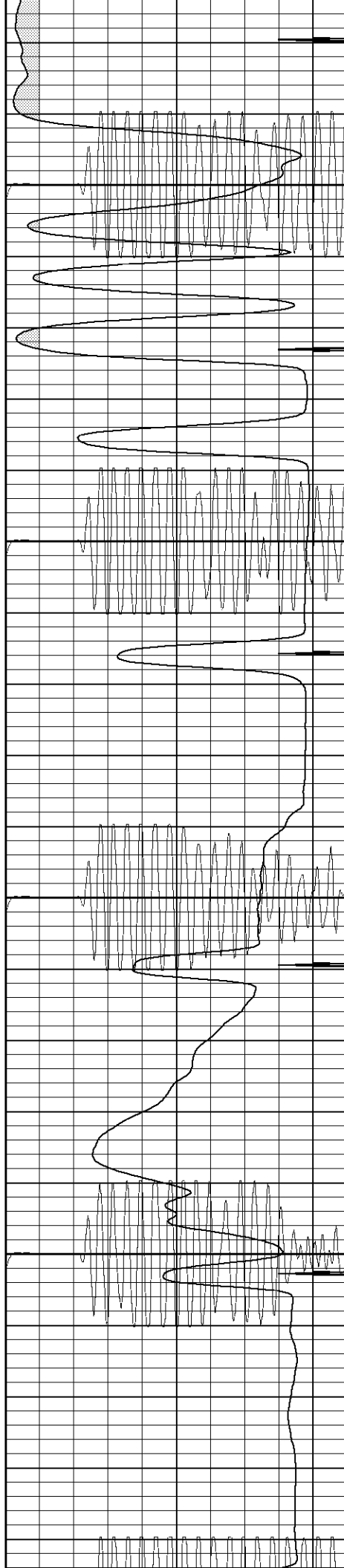


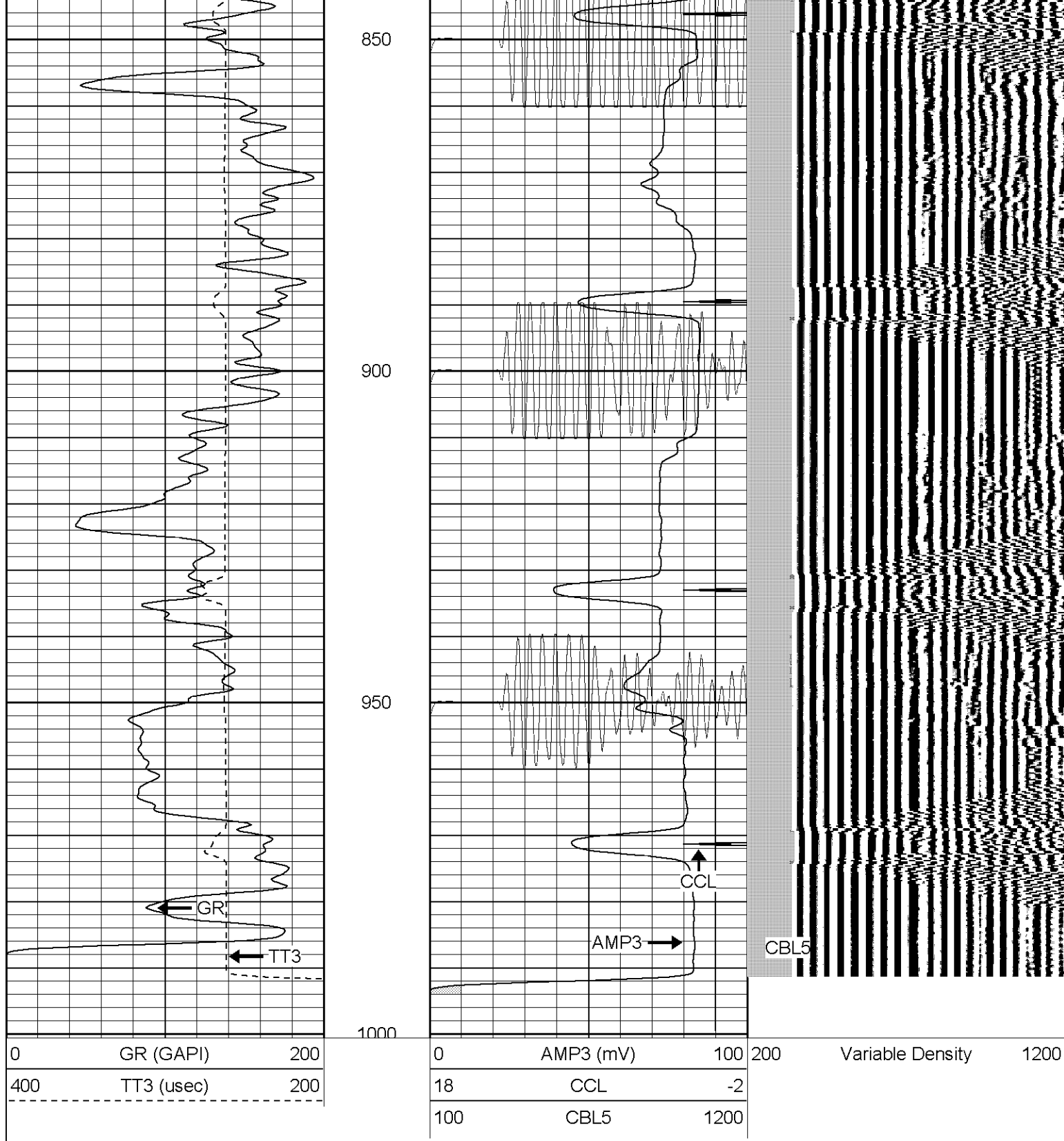
650

700

750

800





SUPERIOR

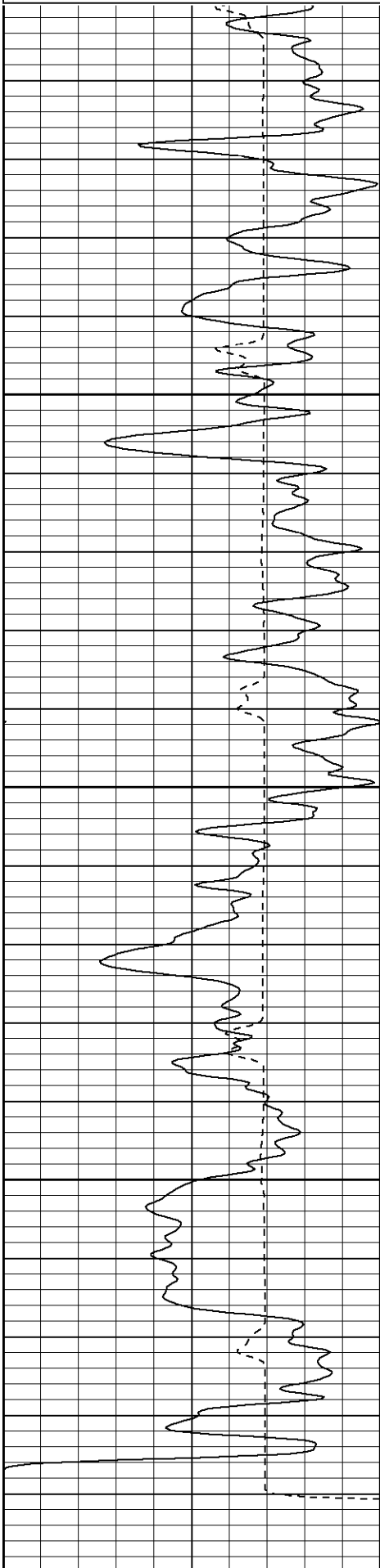
Black Lick, Pa.
Mercer, Pa.
Wooster, Oh.
Cleveland, Ok.
Trinidad, Co.

Repeat Pass

Database File: hillclimb121806b.db
Dataset Pathname: pass1.2
Presentation Format: cblrt
Dataset Creation: Mon Dec 18 13:15:39 2006 by Calc Warrior 7.0 STD Cas
Charted by: Depth in Feet scaled 1:240

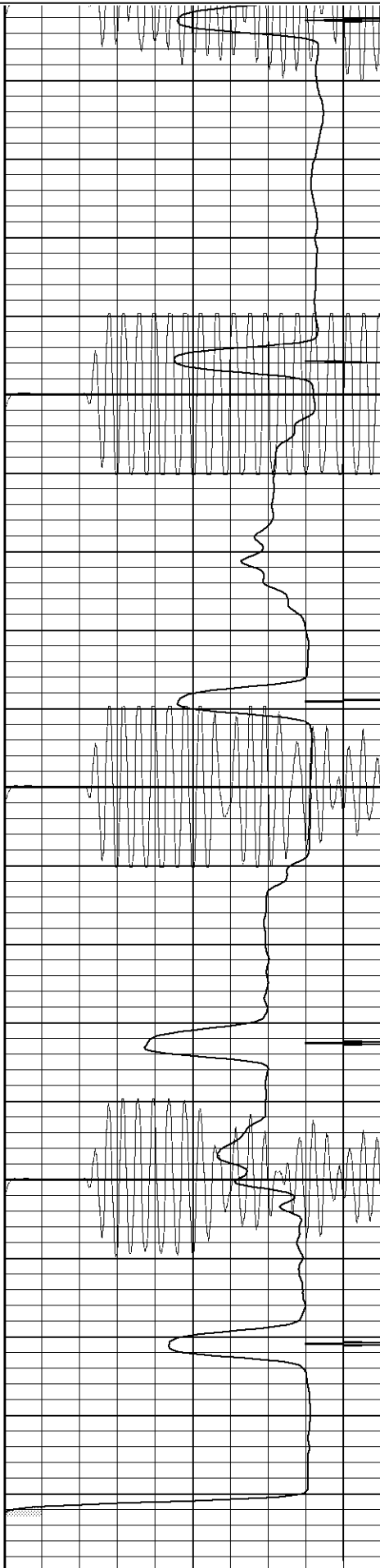


0	GR (GAPI)	200
400	TT3 (usec)	200



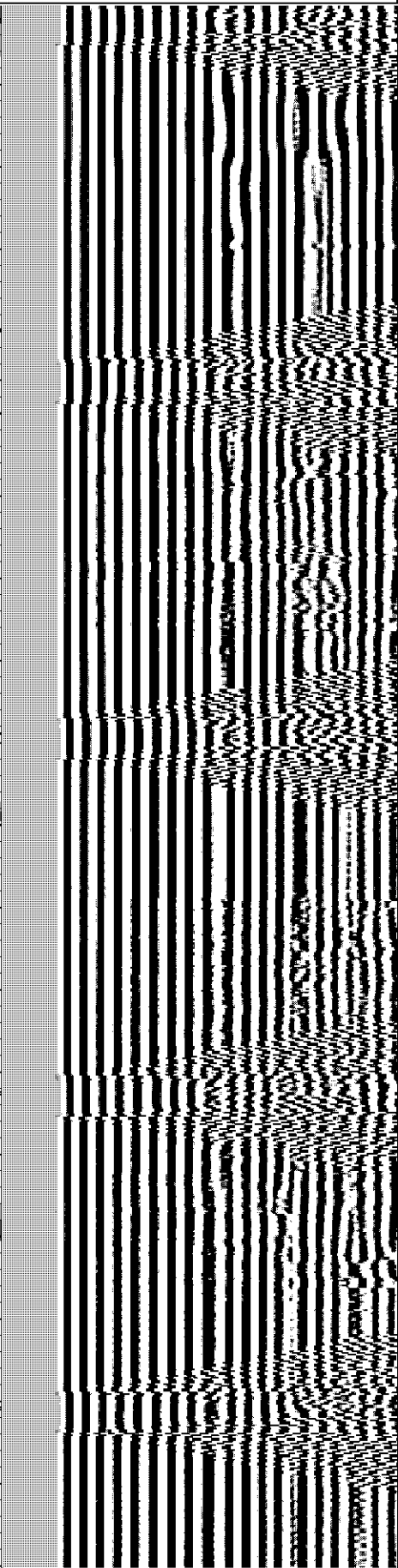
0	GR (GAPI)	200
400	TT3 (usec)	200

0	AMP3 (mV)	100
18	CCL	-2
100	CBL5	1200



0	AMP3 (mV)	100
18	CCL	-2
100	CBL5	1200

200	Variable Density	1200
-----	------------------	------



200	Variable Density	1200
-----	------------------	------

400	115 (usec)	200	10	CCL	12
			100	CBL5	1200

Cement Bond Log Calibration Report					
Serial Number:	Titan5				
Tool Model:	T2				
Performed:	Thu Oct 06 08:02:53 2005				
Depth:	0	ft			
Casing Diameter:	0	in			
	3' Spacing		5' Spacing		
Signal Zero:	0		0	mV	
Calibrated Amplitude:	85		85	mV	
Reading at Signal Zero:	0.04		0.008	V	
Reading in Free Pipe:	1.12		1.2	V	
Gain:	78.7037		71.3087		
Offset:	-3.14815		-0.57047		

Gamma Ray Calibration Report					
Serial Number:	Titan5				
Tool Model:	T2				
Performed:	Tue Mar 08 10:52:42 2005				
Calibrator Value:	250.0	GAPI			
Background Reading:	40.0	cps			
Calibrator Reading:	220.0	cps			
Sensitivity:	1.3000	GAPI/cps			

Sensor	Offset (ft)	Schematic	Description	Len (ft)	OD (in)	Wt (lb)
GR	13.64		GR-T2 (Titan5)	2.52	2.44	25.00
WVF5	9.49		CBL-T2 (Titan5)	7.23	2.25	110.00
WVF3	8.49					
CENT	5.15		X	3.00	3.00	25.00
CCL	0.83		CCL-T5 (Titan5) Long	2.15	2.75	15.00
		Dataset:	/field/well/run1/_plots/_jobs_/cbl			
		Total Length:	14.91 ft			
		Total Weight:	175.00 lb			
		O.D.	3.00 in			