



**SUPERIOR**  
Black Lick, Pa.  
Mercer, Pa.  
Wooster, Oh.  
Cleveland, Ok.  
Trinidad, Co.

## CEMENT BOND LOG

Company Pioneer Natural Resources  
Well Hill Climb 22-2  
Field Purgatorie River  
County Las Animas State Colorado

Location: API # : 05-071-08175-00

1820' FNL & 2193' FWL

SEC 2 TWP 33S RGE 67W

Permanent Datum Ground Level Elevation 7518'  
Log Measured From Kelly Bushing 4' Above G.L.  
Drilling Measured From Kelly Bushing

Elevation  
K.B. 7522'  
D.F. -----  
G.L. 7518'

Date 12-11-06

Run Number	One		
Depth Driller	2338'		
Depth Logger	2338'		
Bottom Logged Interval	2336'		
Top Log Interval	Surface		
Open Hole Size	7 7/8"		
Type Fluid	Water		
Density / Viscosity	////		
Max. Recorded Temp.	127 DEG F		
Estimated Cement Top	508'		
Time Well Ready	2:00 P.M.		
Time Logger on Bottom	2:40 P.M.		
Equipment Number	T0700		
Location	Trinidad, Co.		
Recorded By	S. Allen		
Witnessed By	Mr. Gary Lamb		

Borehole Record				Tubing Record			
Run Number	Bit	From	To	Size	Weight	From	To

Casing Record	Size	Wgt/Ft	Top	Bottom
Surface String	8 5/8"		00	522'
Prot. String				
Production String	5 1/2"		00	N/A
Liner				

>>> Fold Here >>>

All interpretations are opinions based on inferences from electrical or other measurements and we cannot and do not guarantee the accuracy or correctness of any interpretation, and we shall not, except in the case of gross or willful negligence on our part, be liable or responsible for any loss, costs, damages, or expenses incurred or sustained by anyone resulting from any interpretation made by any of our officers, agents or employees. These interpretations are also subject to our general terms and conditions set out in our current Price Schedule.

### Comments

Sarcillo Canyon-Past McDonald's House to "T"-Turn Left-1st Left-  
Drive Through CU Location-Stay on Road to Vermejo Location-  
Take Hard Left-1st Left to Location.



**SUPERIOR**  
Black Lick, Pa.  
Mercer, Pa.  
Wooster, Oh.  
Cleveland, Ok.  
Trinidad, Co.

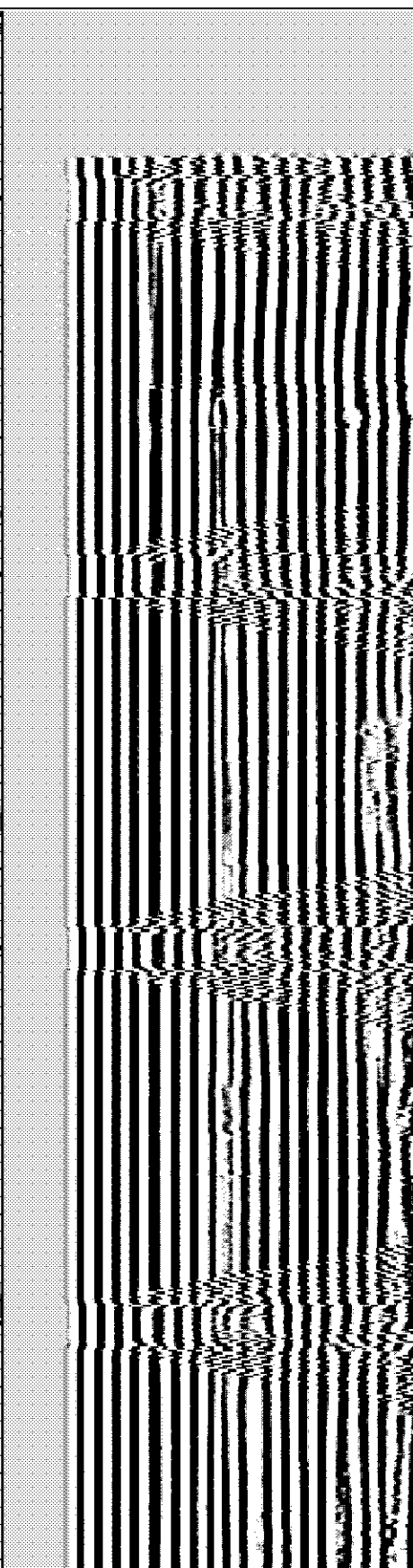
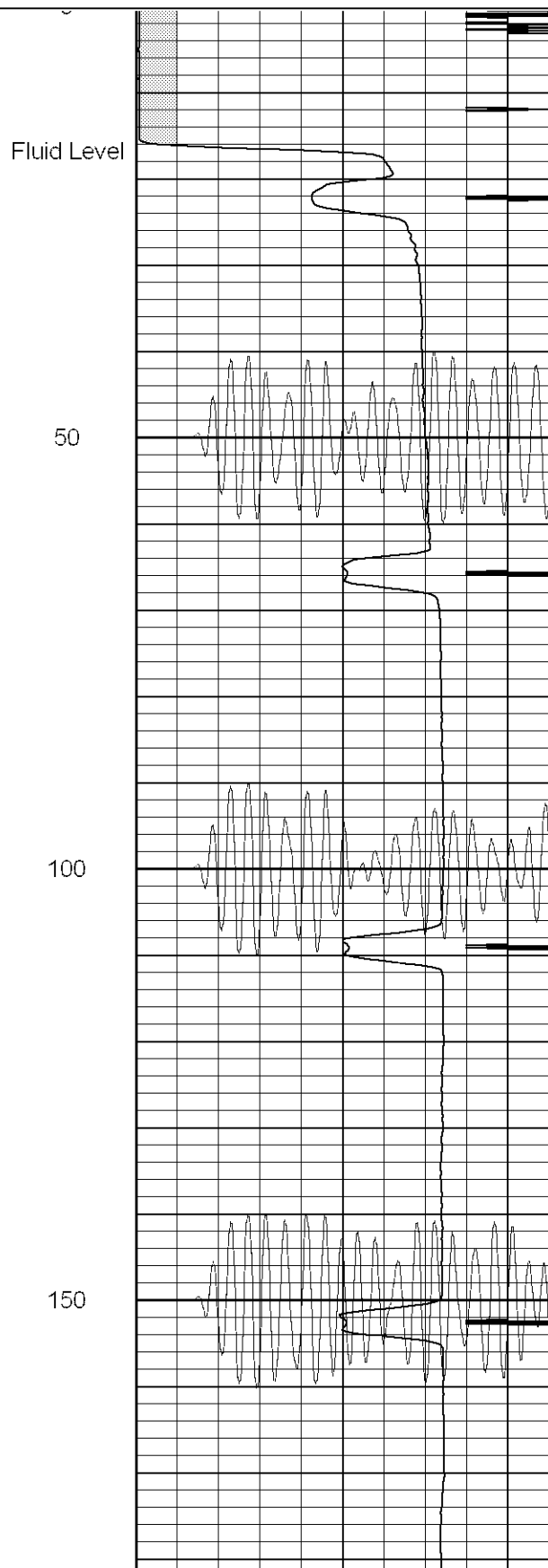
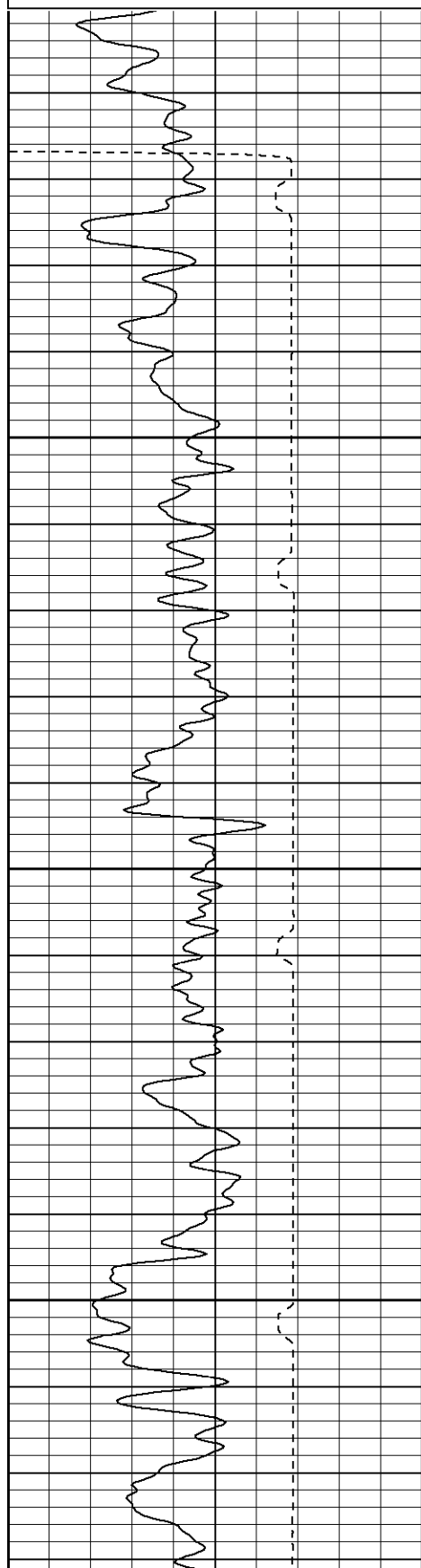
# Main Pass

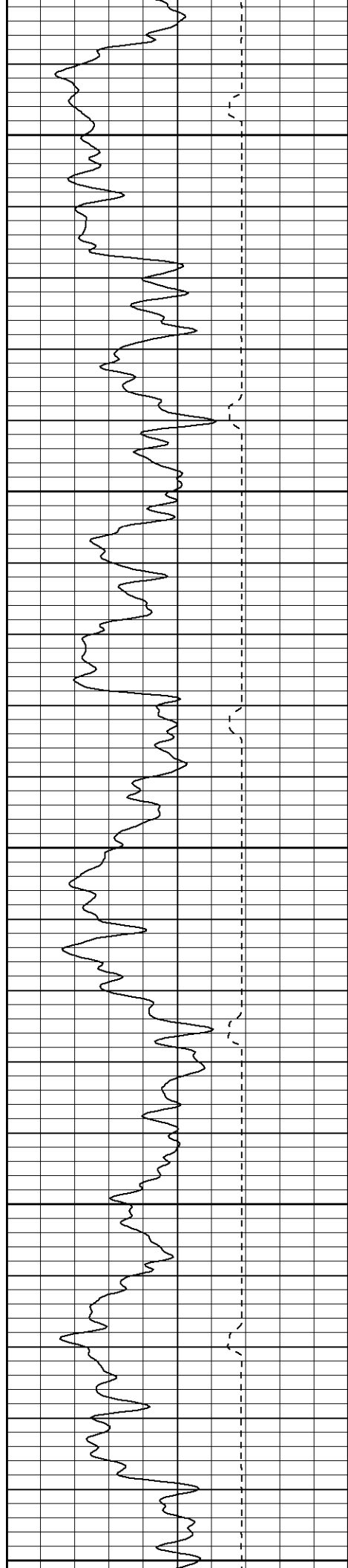
Database File: hillclimb121106b.db  
Dataset Pathname: pass2  
Presentation Format: cblrt  
Dataset Creation: Mon Dec 11 14:47:16 2006 by Log Open-Cased 060407  
Charted by: Depth in Feet scaled 1:240

0	GR (GAPI)	200
400	TT3 (usec)	200
<hr/>		
200	GR (GAPI)	400

0	Amplitude (mV)	100
18	CCL	-2
<hr/>		
200	CBL5	1200

200 VDL 1200





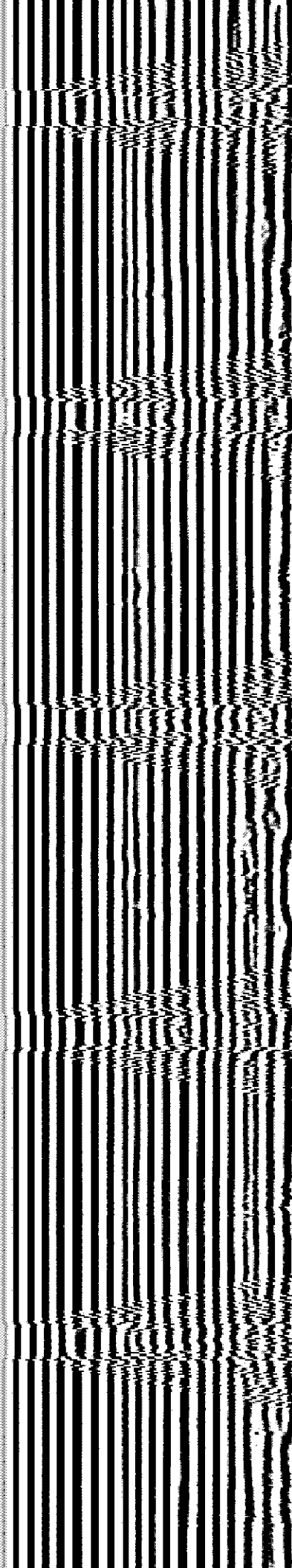
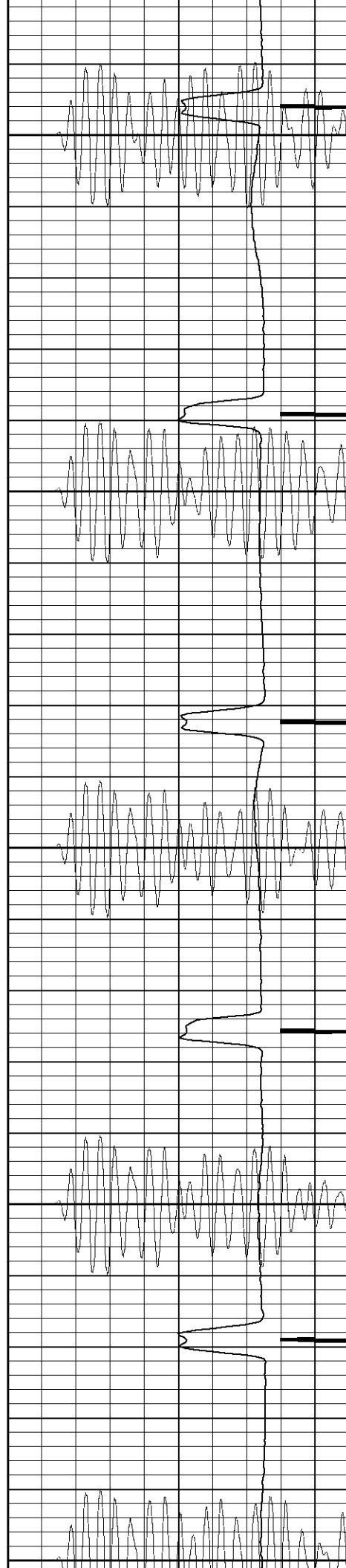
200

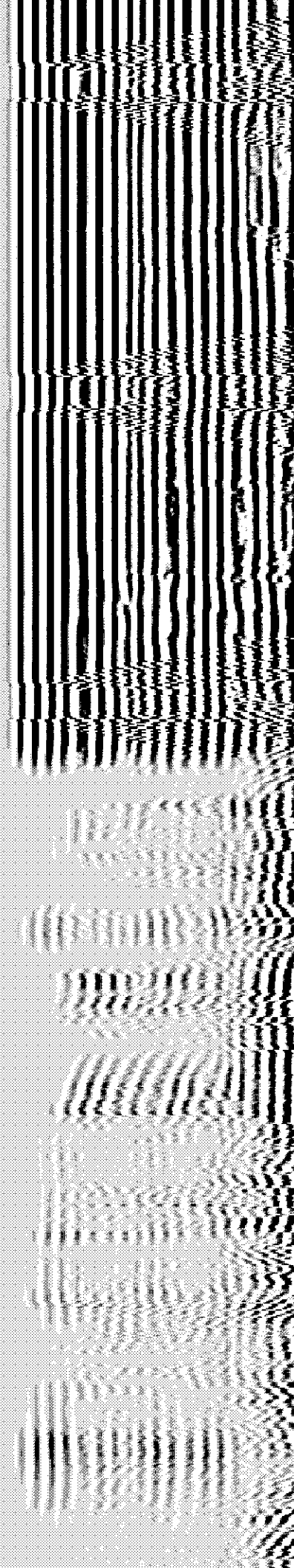
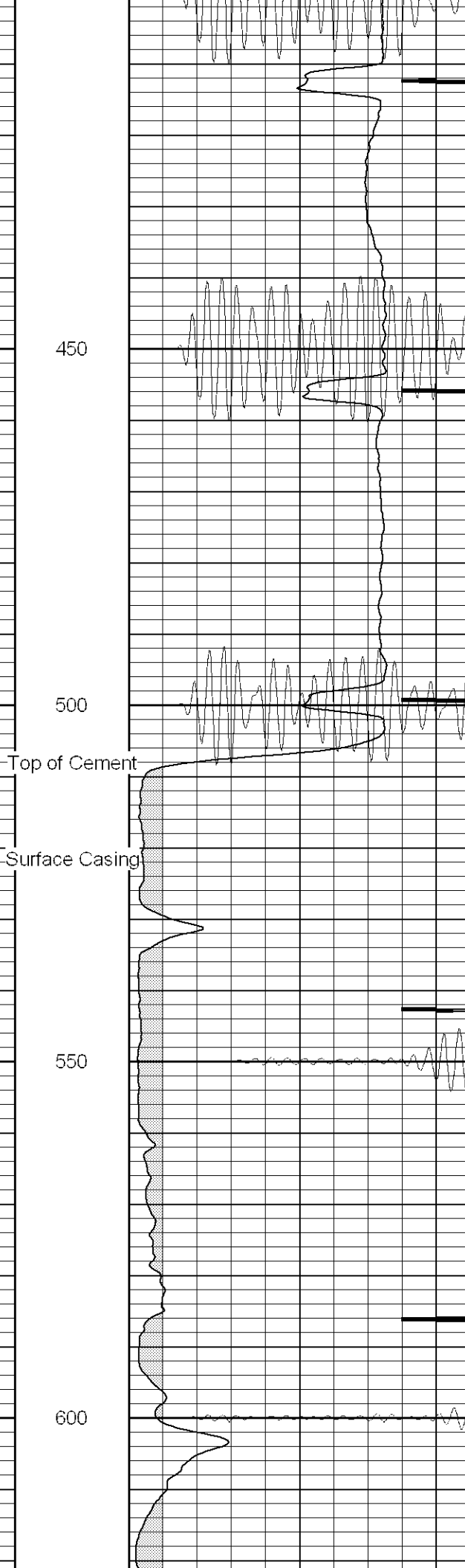
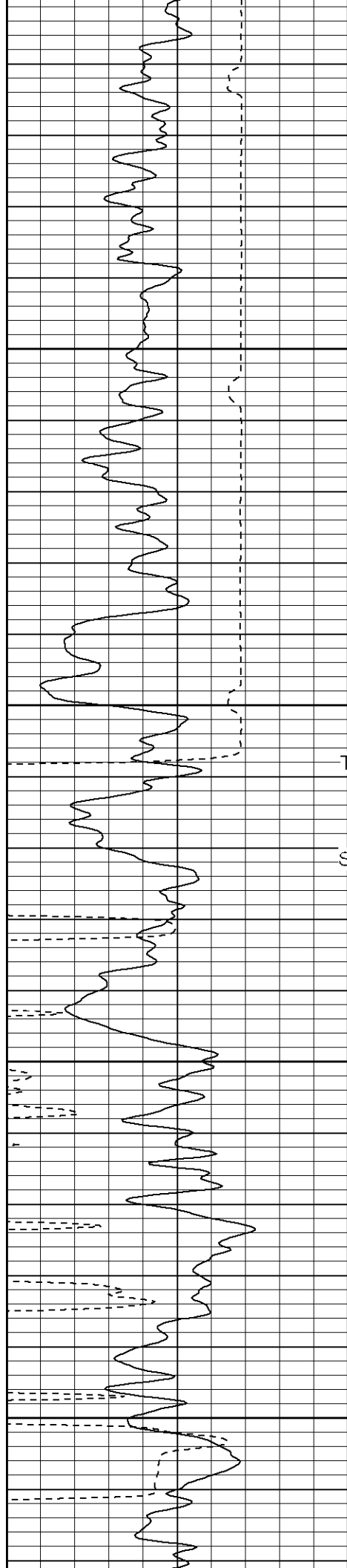
250

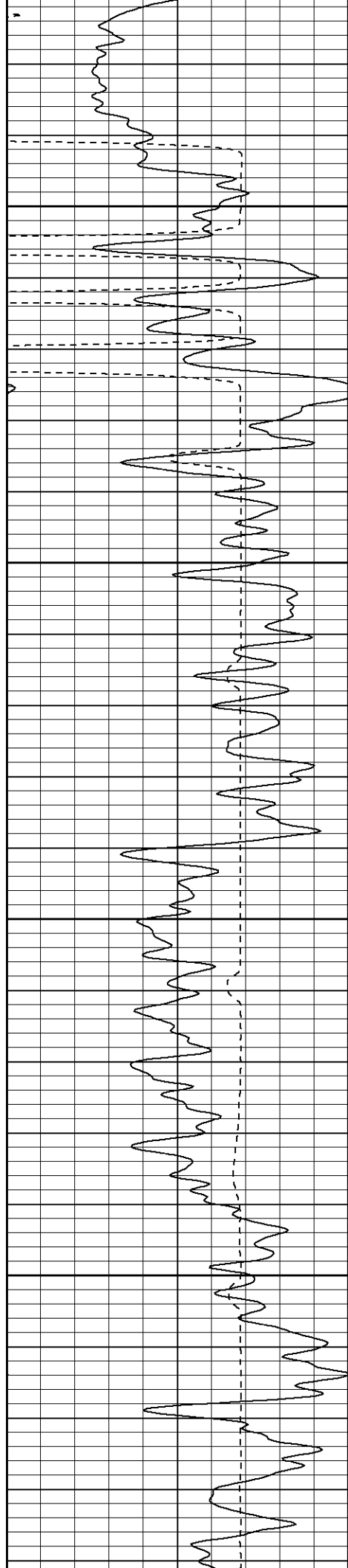
300

350

400





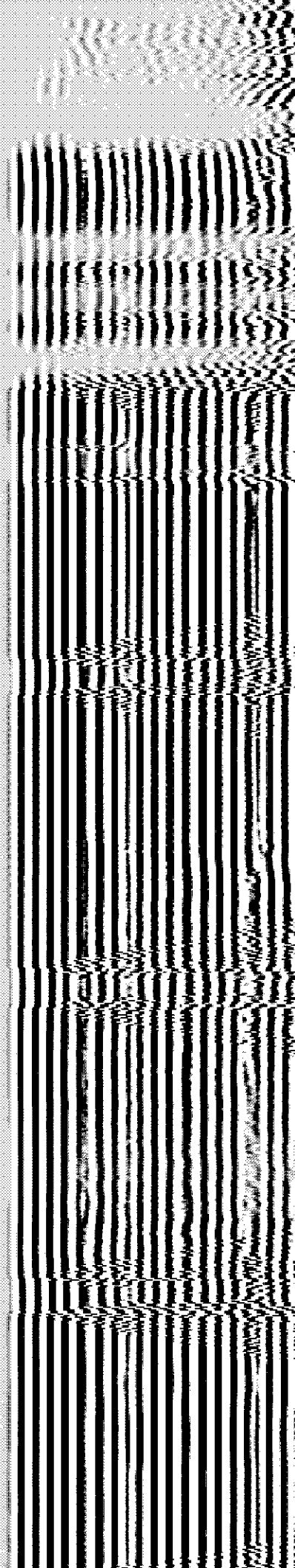
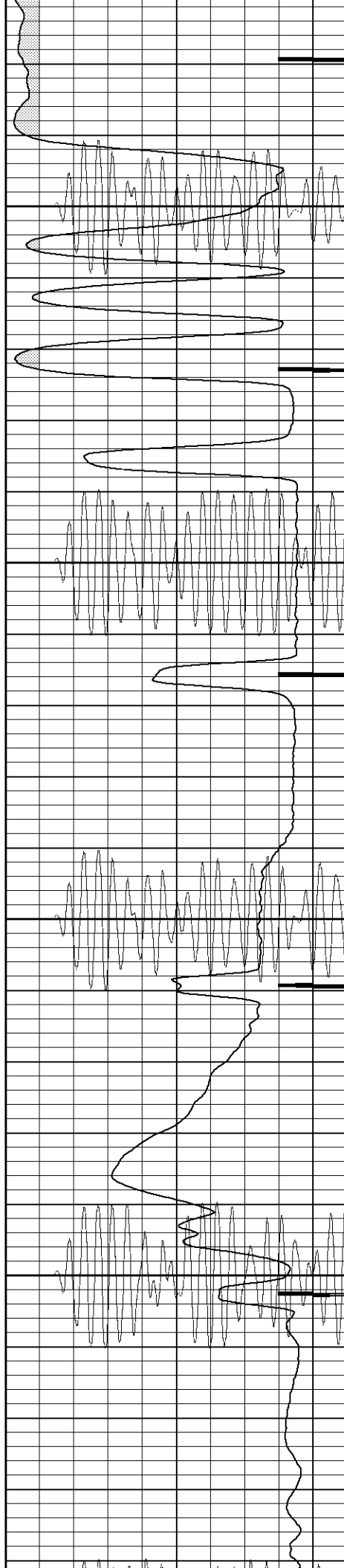


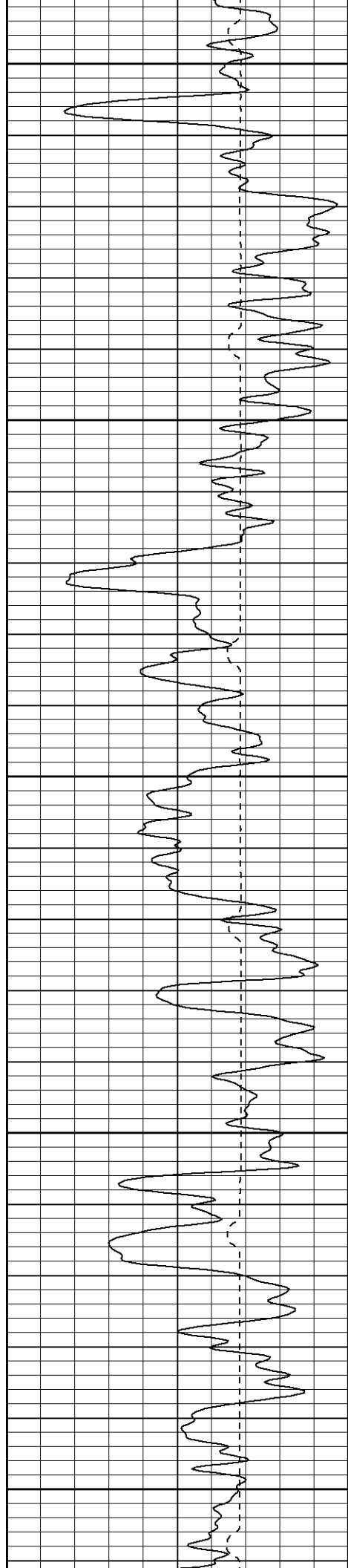
650

700

750

800





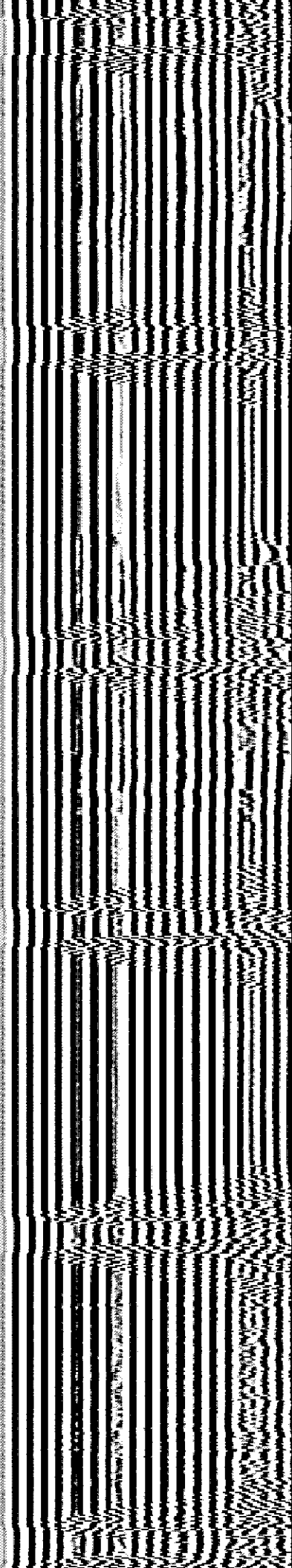
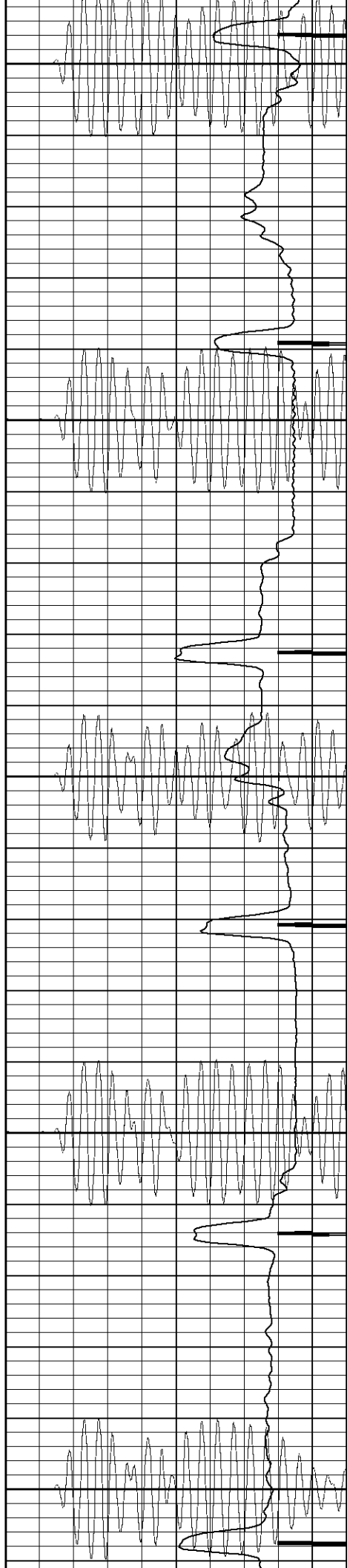
850

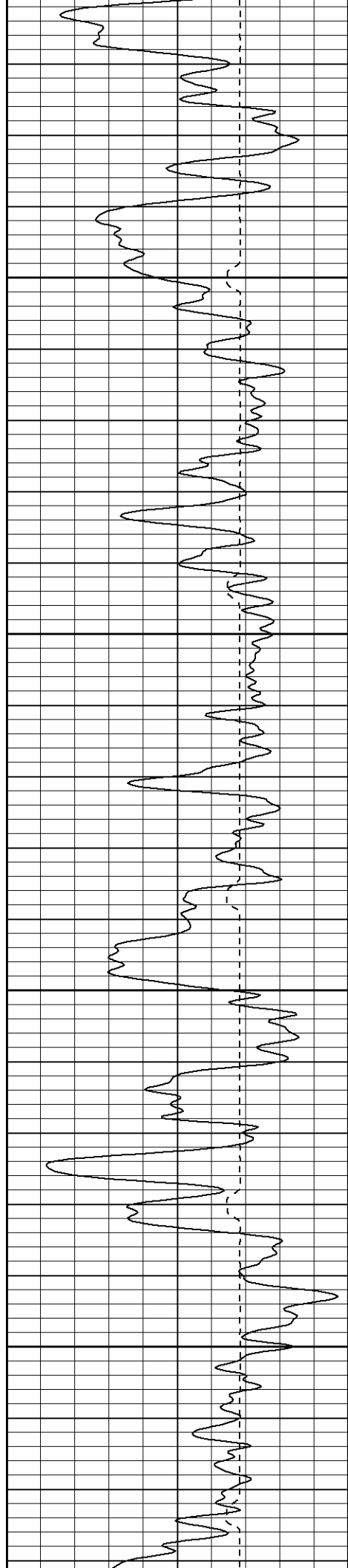
900

950

1000

1050



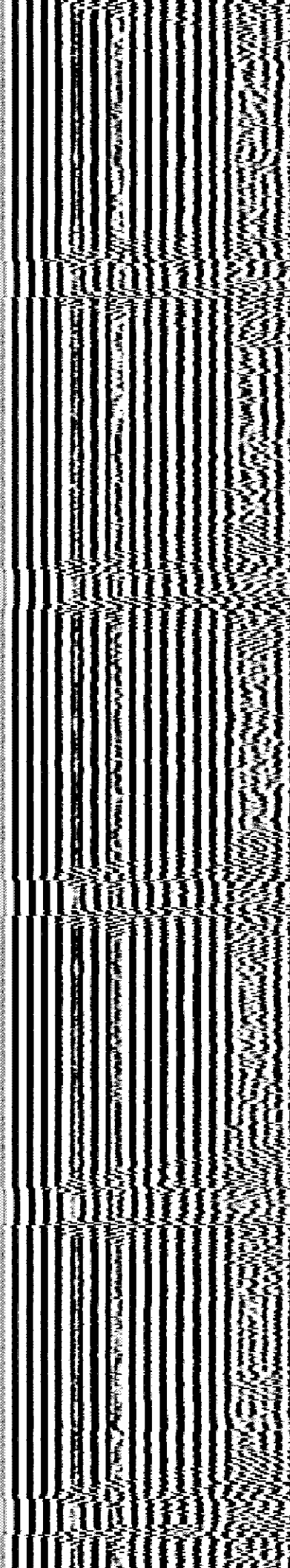
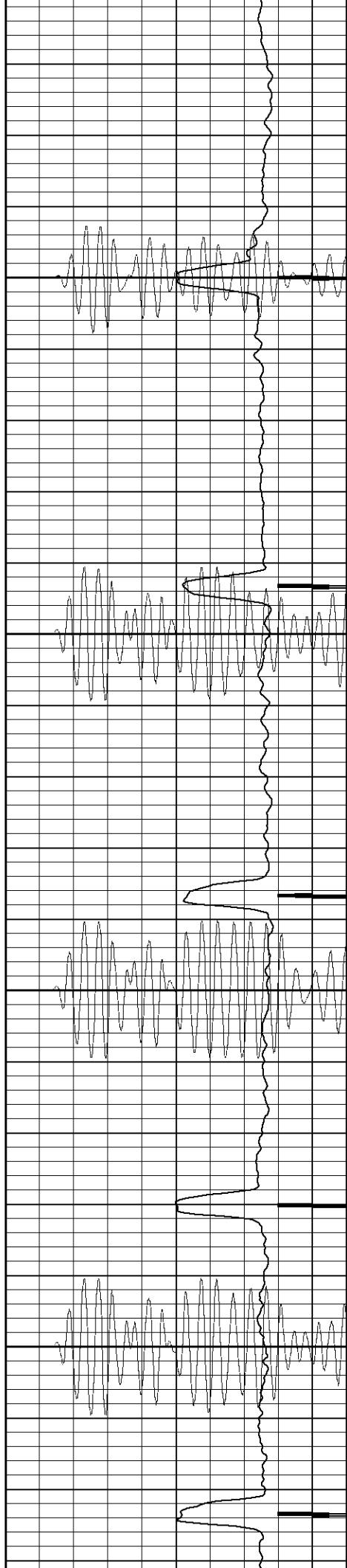


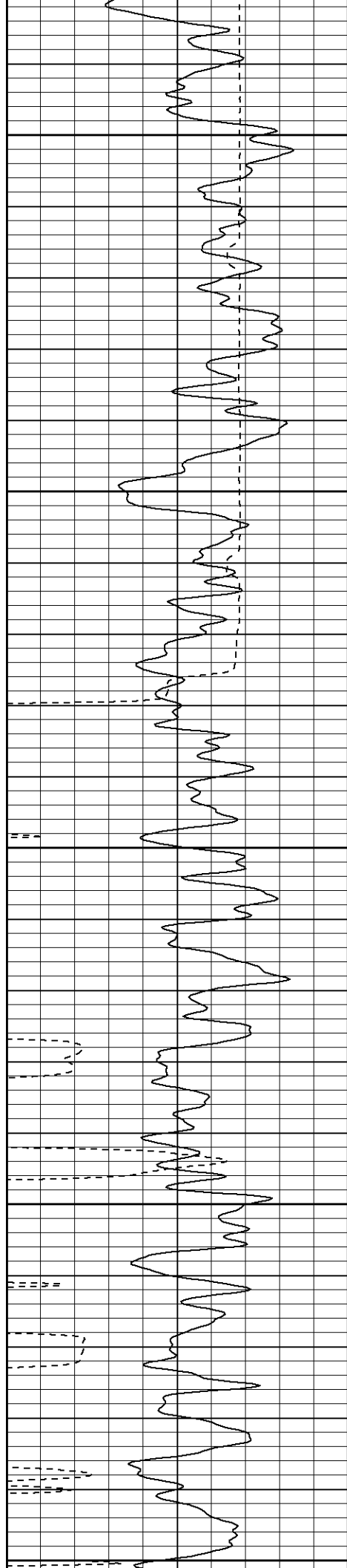
1100

1150

1200

1250





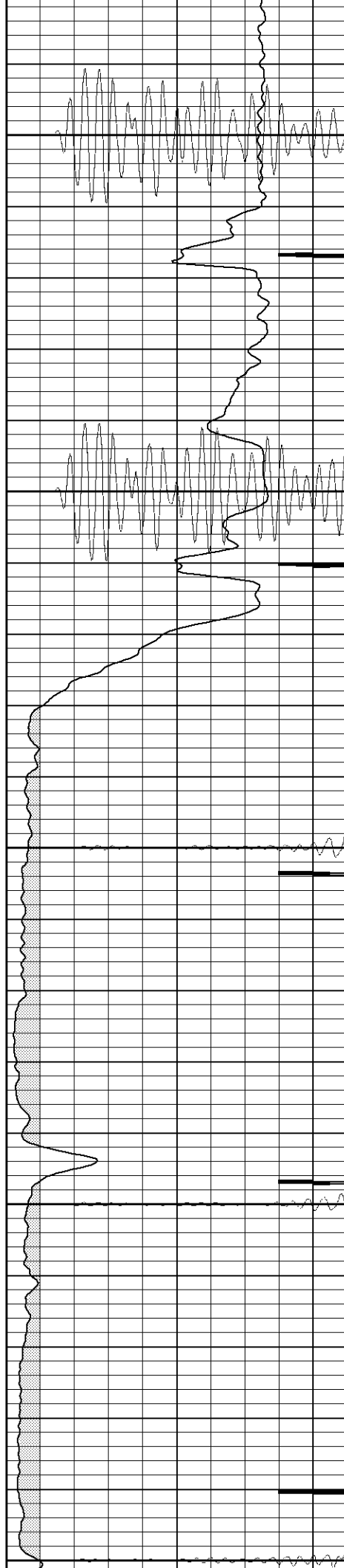
1300

1350

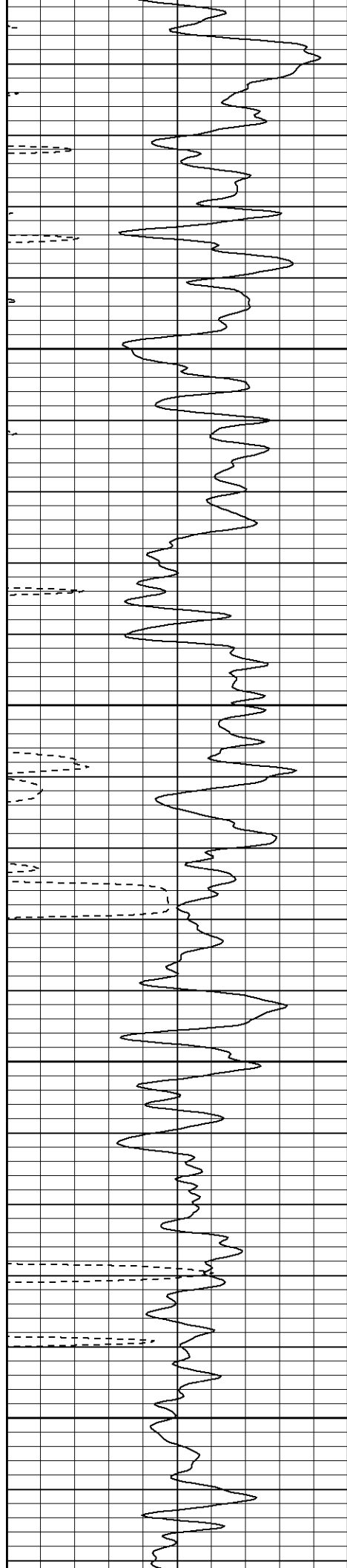
1400

1450

1500





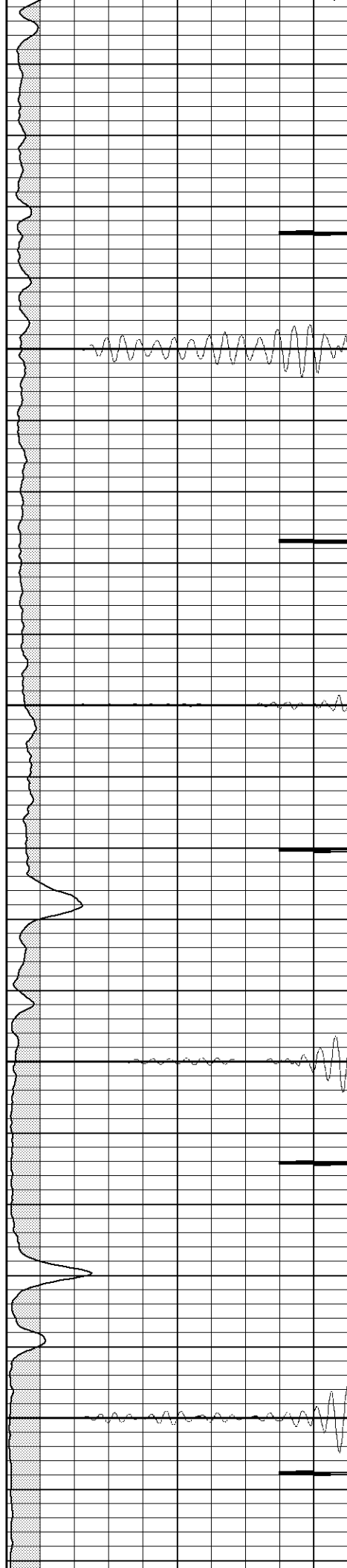


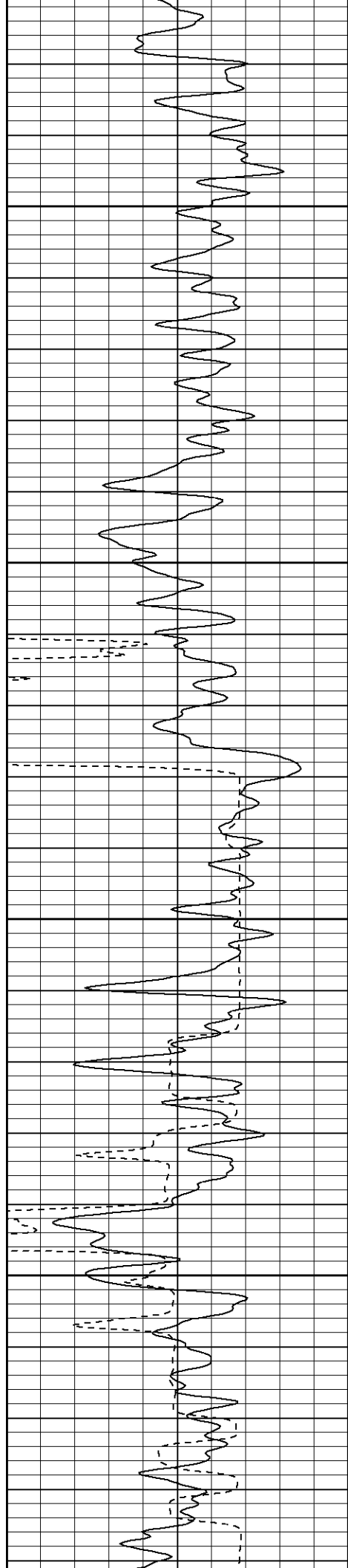
1550

1600

1650

1700



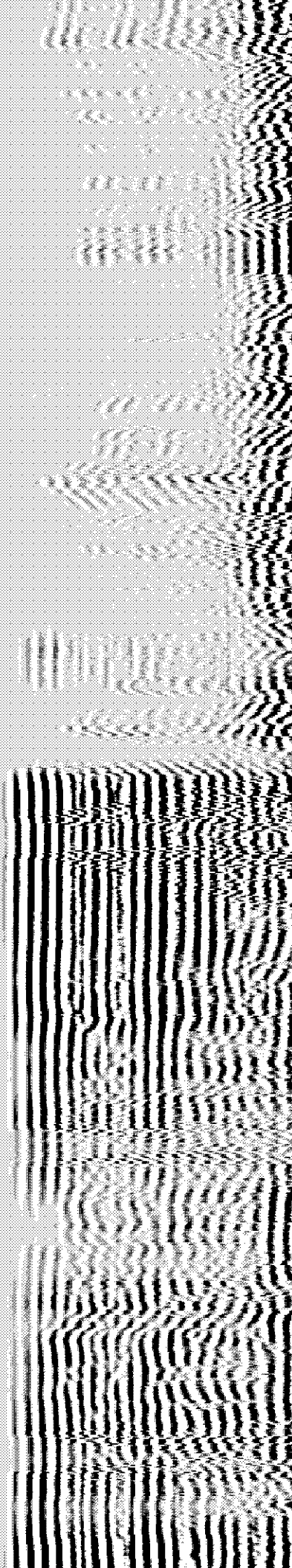
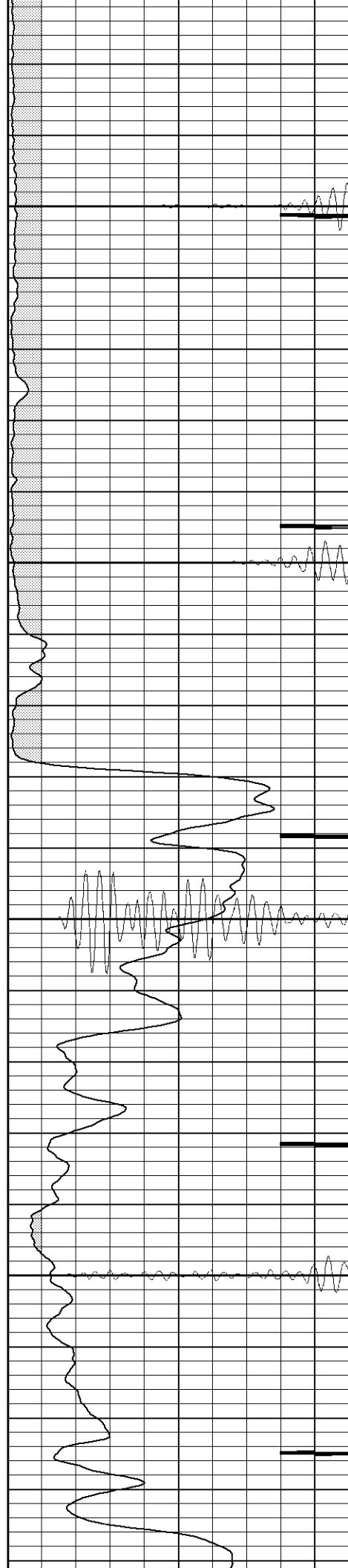


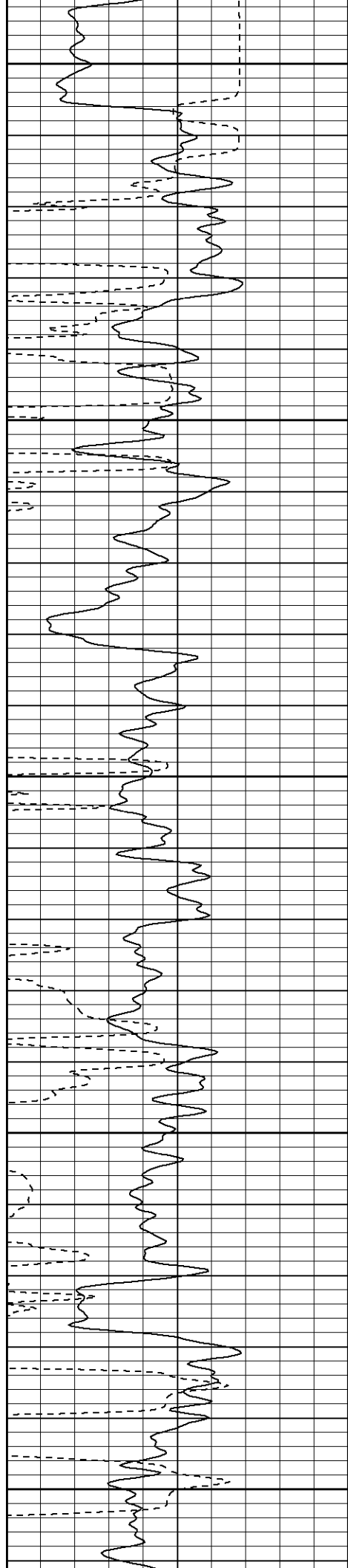
1750

1800

1850

1900





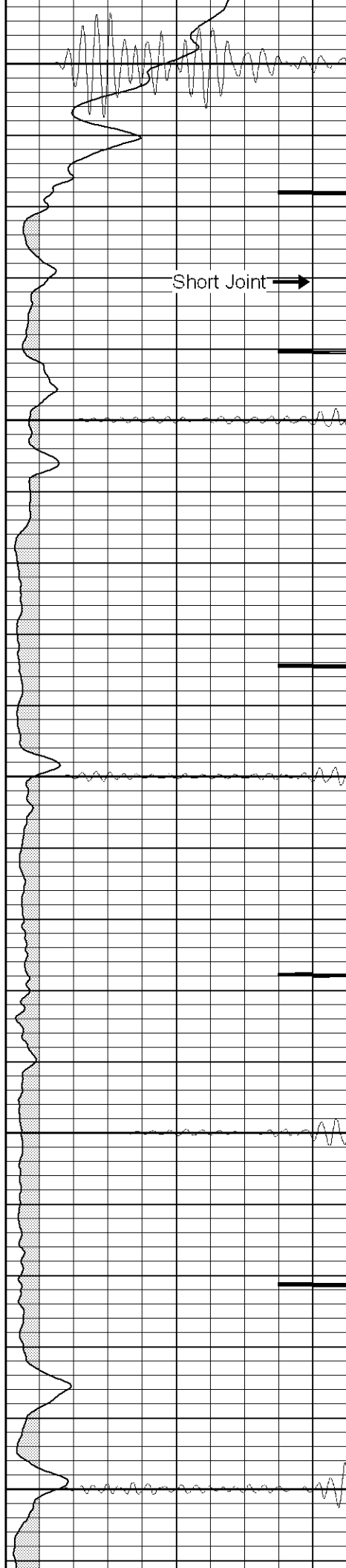
1950

2000

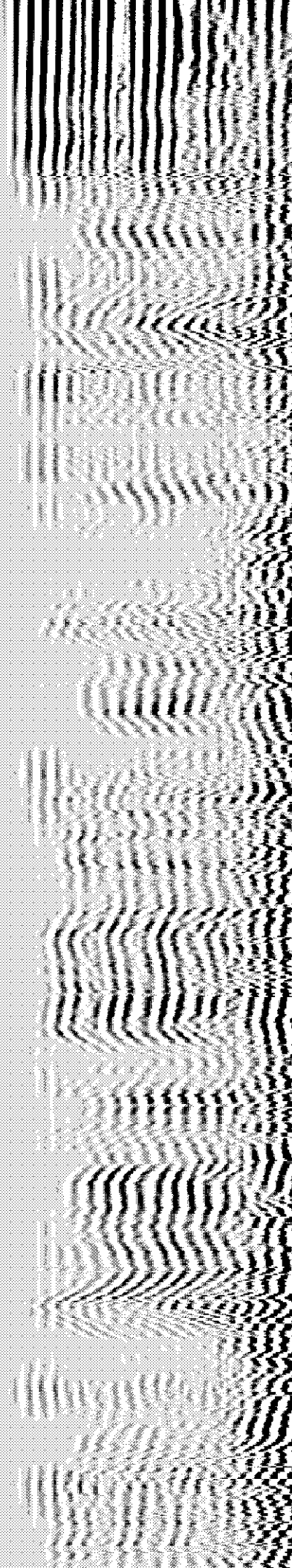
2050

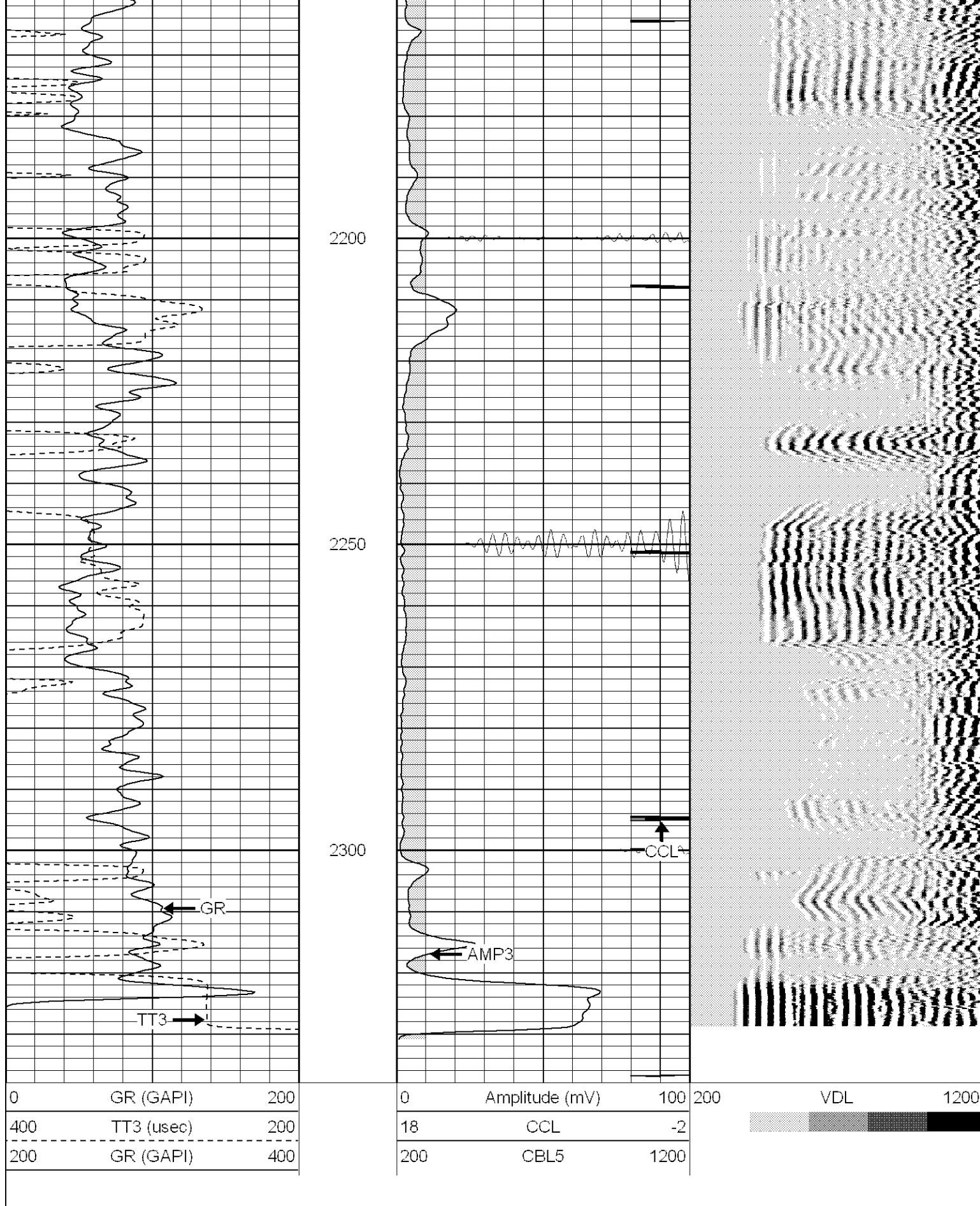
2100

2150



Short Joint →





**SUPERIOR**

Black Lick, Pa.  
Mercer, Pa.  
Wooster, Oh.  
Cleveland, Ok.

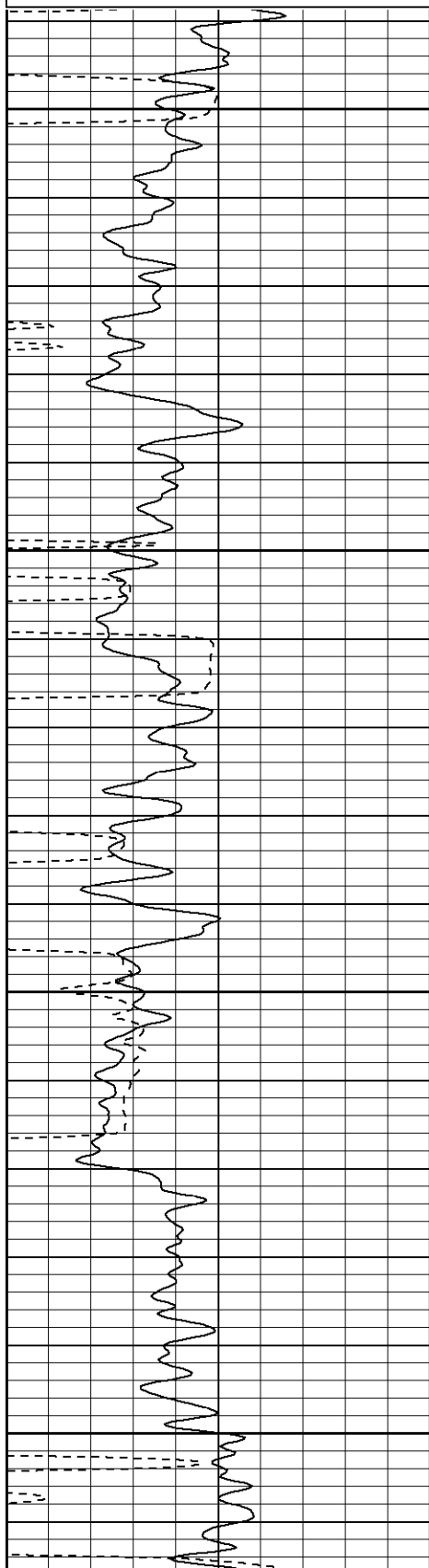
# Repeat Section

Database File: hillclimb121106b.db  
Dataset Pathname: pass1  
Presentation Format: cblrt  
Dataset Creation: Mon Dec 11 14:40:29 2006 by Log Open-Cased 060407  
Charted by: Depth in Feet scaled 1:240

0	GR (GAPI)	200
400	TT3 (usec)	200
200	GR (GAPI)	400

0	Amplitude (mV)	100
18	CCL	-2
200	CBL5	1200

200	VDL	1200
-----	-----	------

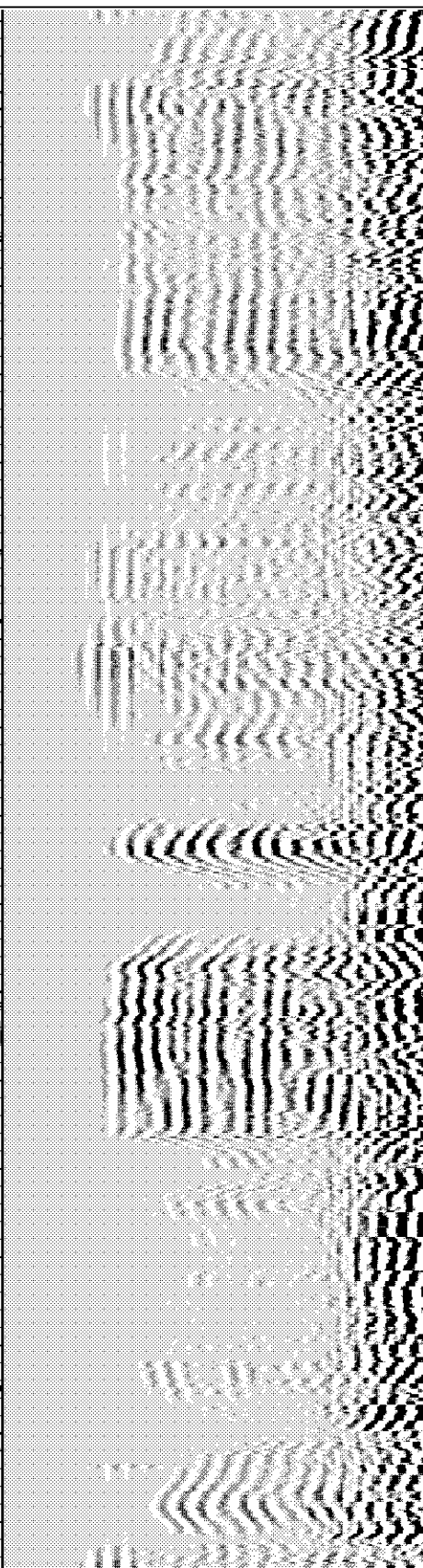


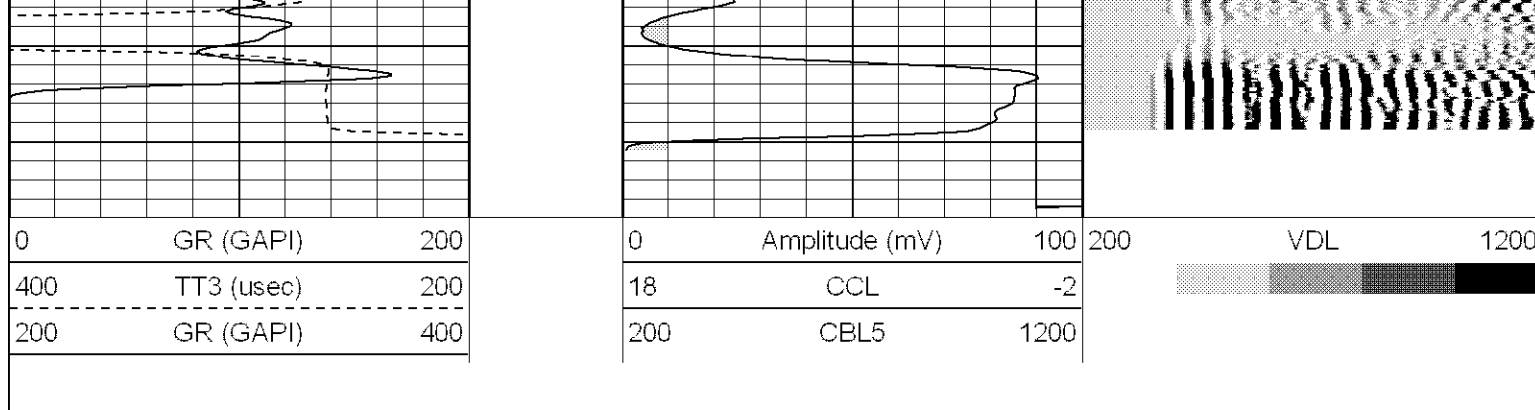
2150

2200

2250

2300





Calibration Report				
Database File:	hillclimb121106b.db			
Dataset Pathname:	pass1			
Dataset Creation:	Mon Dec 11 14:40:29 2006 by Log Open-Cased 060407			
Cement Bond Log Calibration Report				
Serial Number:	Titan3			
Tool Model:	T3			
Performed:	Tue Nov 21 12:13:49 2006			
Depth:	443.682	ft		
Casing Diameter:	5.5	in		
	3' Spacing	5' Spacing		
Signal Zero:	1	1	mV	
Calibrated Amplitude:	71.921	71.921	mV	
Reading at Signal Zero:	0	0.00651855	V	
Reading in Free Pipe:	1.24	1.3	V	
Gain:	57.1944	54.8295		
Offset:	1	0.642591		
Gamma Ray Calibration Report				
Serial Number:	Titan3			
Tool Model:	T2			
Performed:	Fri Nov 03 11:27:25 2006			
Calibrator Value:	200.0	GAPI		
Background Reading:	54.0	cps		
Calibrator Reading:	219.0	cps		
Sensitivity:	1.1500	GAPI/cps		

Sensor	Offset (ft)	Schematic	Description	Len (ft)	OD (in)	Wt (lb)
GR	13.40		GR-T2 (Titan3)	2.52	2.44	25.00
WVF5	9.24		CBL-T3 (Titan3)	7.23	2.44	110.00
WVF3	8.24					
CENT	4.91		X	3.00	1.69	25.00
			CCL-T3 (Titan3)	1.01	2.75	15.00

