



SUPERIOR
WELL SERVICES
Black Lick, Pa.
Mercer, Pa.
Wooster, Oh.
Cleveland, Ok.
Trinidad, Co.

CEMENT BOND LOG

Company Pioneer Natural Resources
Well Hill Climb 22-2
Field Purgatoire River
County Las Animas State Colorado

Location: API # : 05 071 08175 00

1820' FNL & 2193' FWL

SEC 2 TWP 33S RGE 6W

Permanent Datum Ground Level Elevation 7518'
Log Measured From Kelly Bushing 4' Above G.L.
Drilling Measured From Kelly Bushing

Elevation
K.B. 7522'
D.F. -----
G.L. 7518'

Date 11-09-06

Run Number	Two		
Depth Driller	2475'		
Depth Logger	2338'		
Bottom Logged Interval	2336'		
Top Log Interval	Surface		
Open Hole Size	7 7/8"		
Type Fluid	Water		
Density / Viscosity	///		
Max. Recorded Temp.	127 DEG F		
Estimated Cement Top	1368'		
Time Well Ready	10:15 A.M.		
Time Logger on Bottom	10:35 A.M.		
Equipment Number	T720		
Location	Trinidad		
Recorded By	M. Norton		
Witnessed By			

Borehole Record				Tubing Record			
Bit	From	To	Size	Weight	From	To	

Casing Record	Size	Wgt/Ft	Top	Bottom
Surface String	8 5/8"		00	522'
Prot. String				
Production String	5 1/2"		00	N/A
Liner				

<<< Fold Here >>>

All interpretations are opinions based on inferences from electrical or other measurements and we cannot and do not guarantee the accuracy or correctness of any interpretation, and we shall not, except in the case of gross or willful negligence on our part, be liable or responsible for any loss, costs, damages, or expenses incurred or sustained by anyone resulting from any interpretation made by any of our officers, agents or employees. These interpretations are also subject to our general terms and conditions set out in our current Price Schedule.

Comments

Well Directions:
Sarcillo Canyonpast McDonald's house, at T stay left, first left thru gate,
drive thru the Colorado University location, stay on road to the Vermejo location,
take sharp left, first left to location.



SUPERIOR
Black Lick, Pa.
Mercer, Pa.
Wooster, Oh.
Cleveland, Ok.
Trinidad, Co.

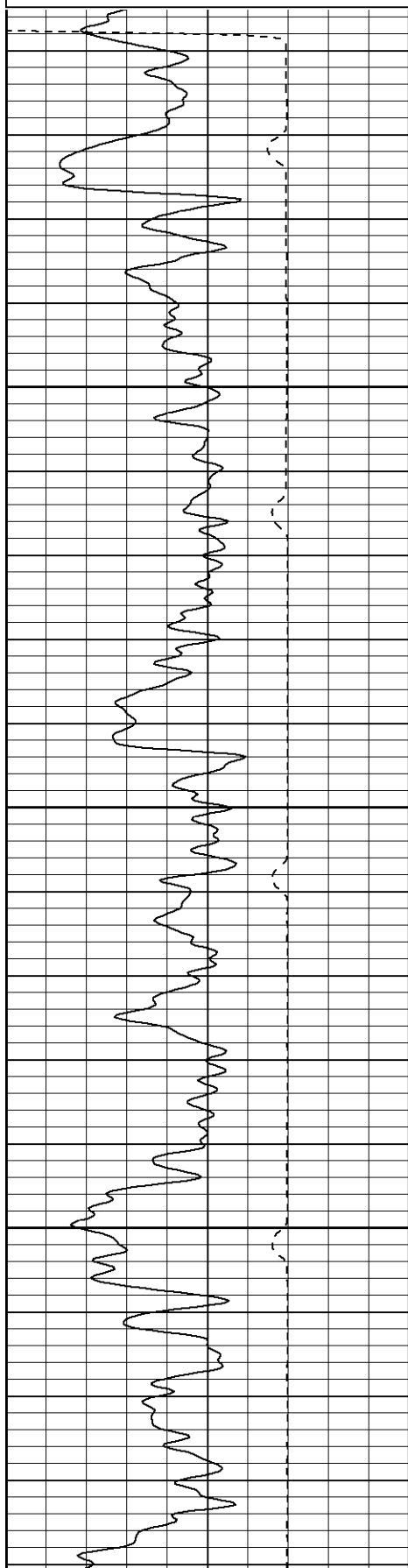
Main Pass

Database File: hillclimb110906b.db
Dataset Pathname: pass2.1
Presentation Format: cblrt
Dataset Creation: Thu Nov 09 11:48:15 2006 by Calc Open-Cased 060407
Charted by: Depth in Feet scaled 1:240

0	GR (GAPI)	200
400	TT3 (usec)	200

0	AMP3 (mV)	100
18	CCL	-2

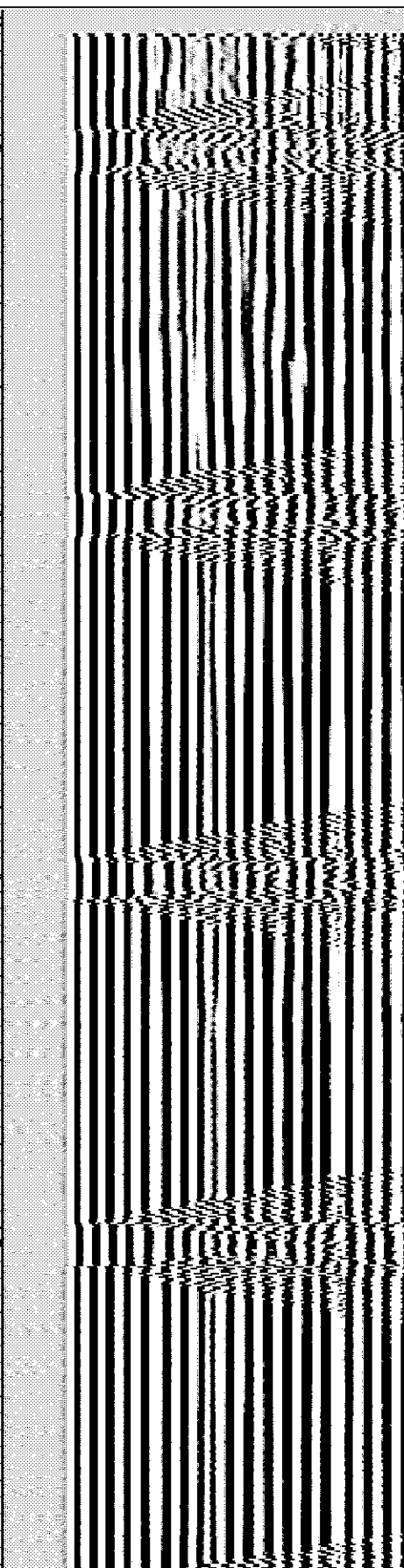
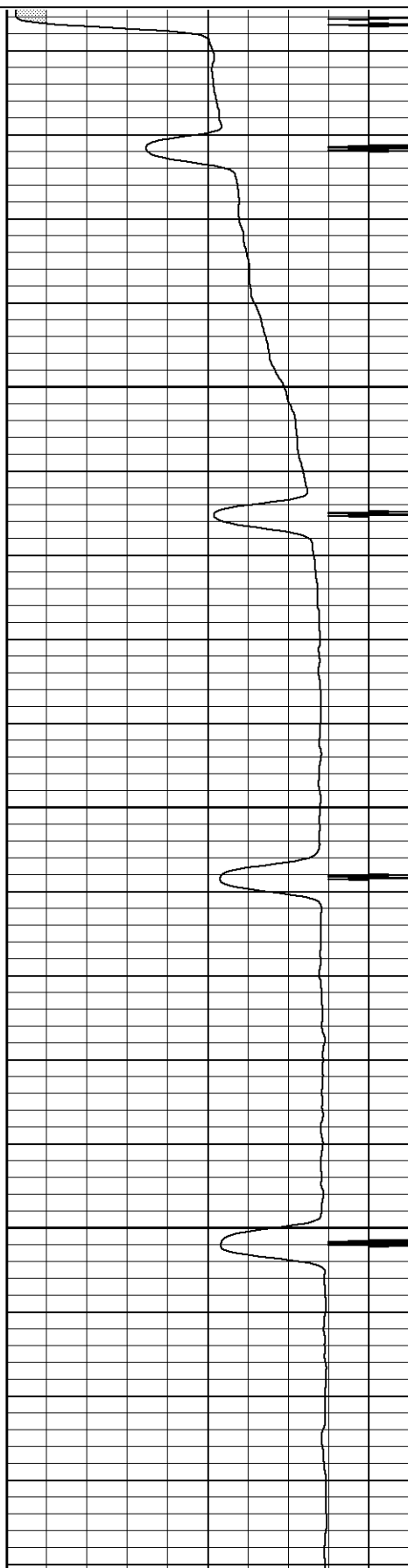
200	Variable Density	1200
-----	------------------	------

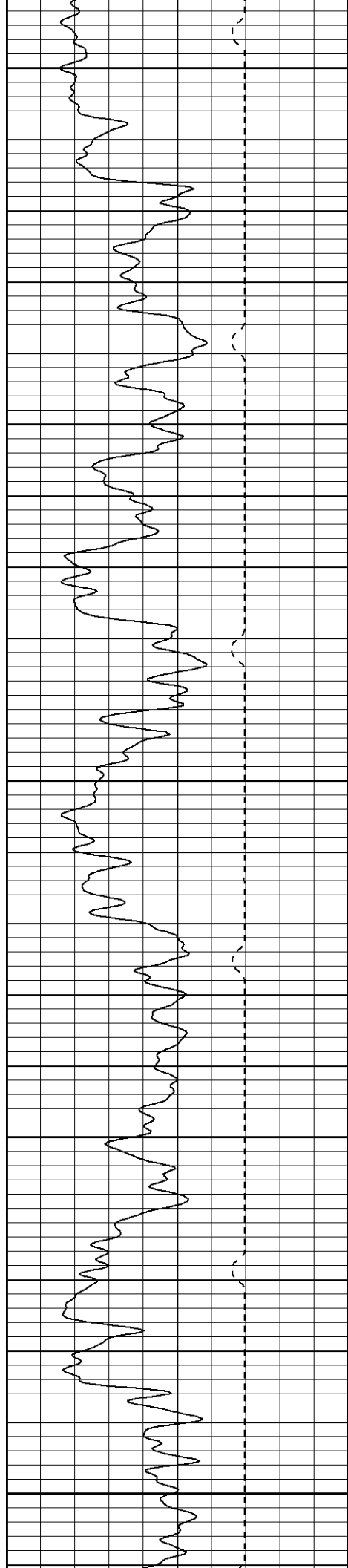


50

100

150





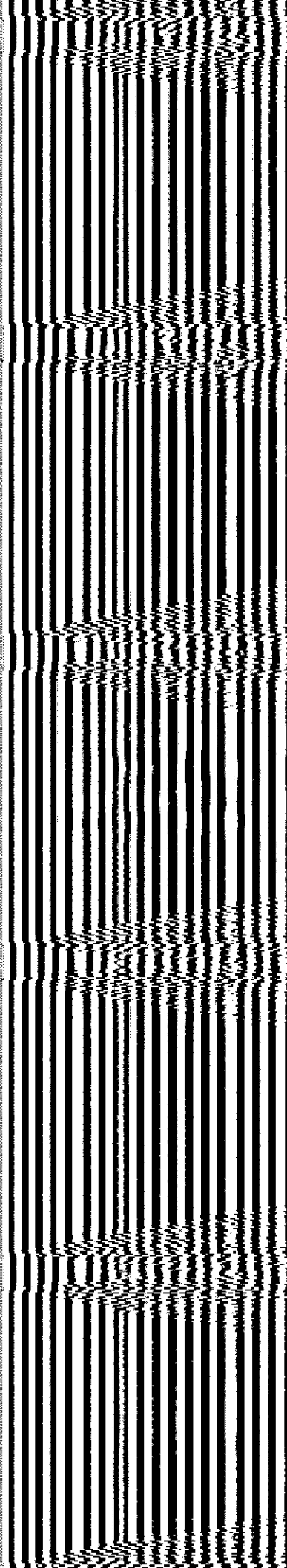
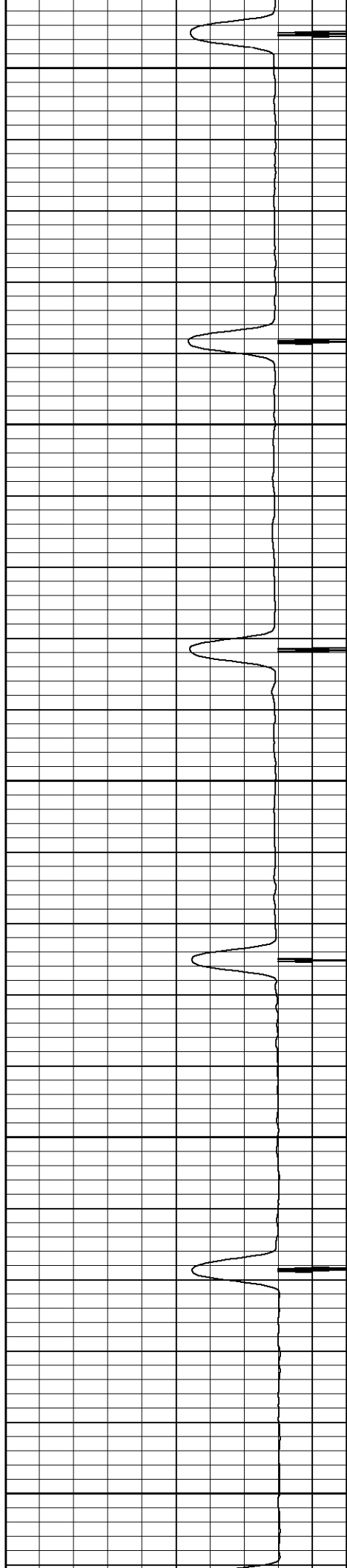
200

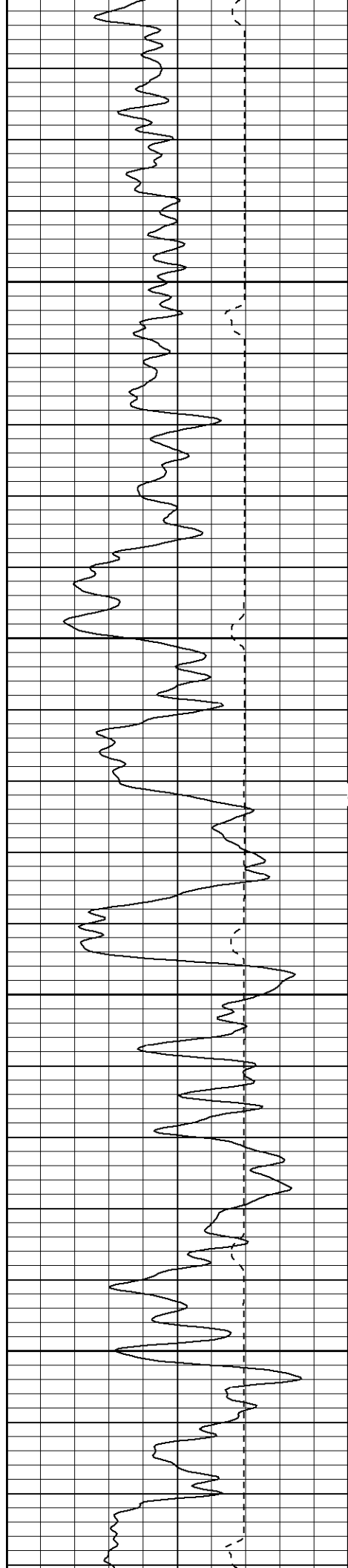
250

300

350

400





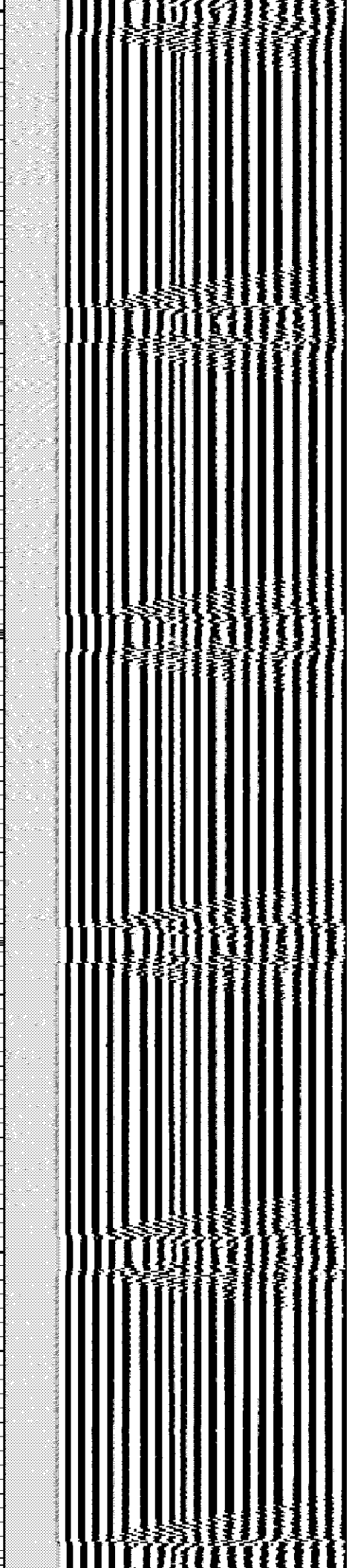
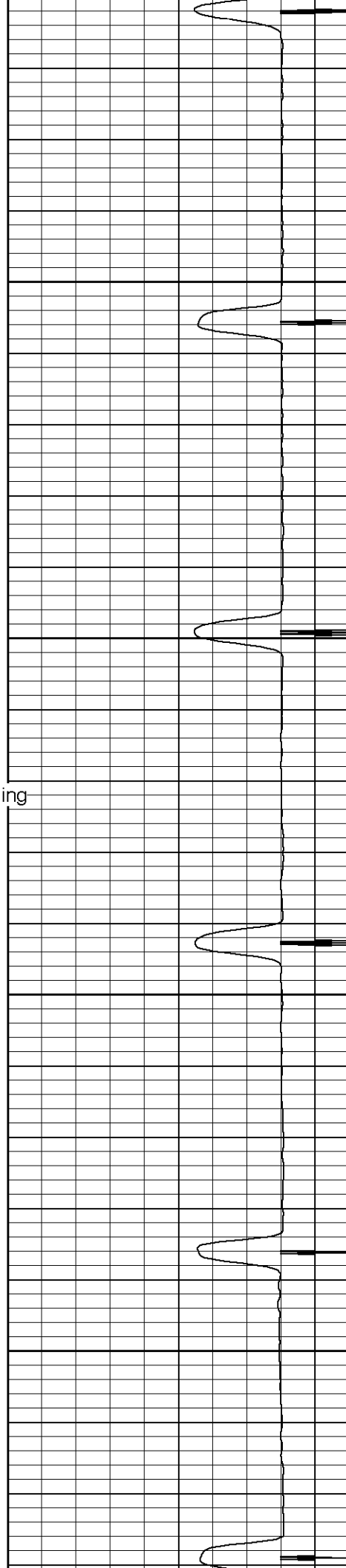
450

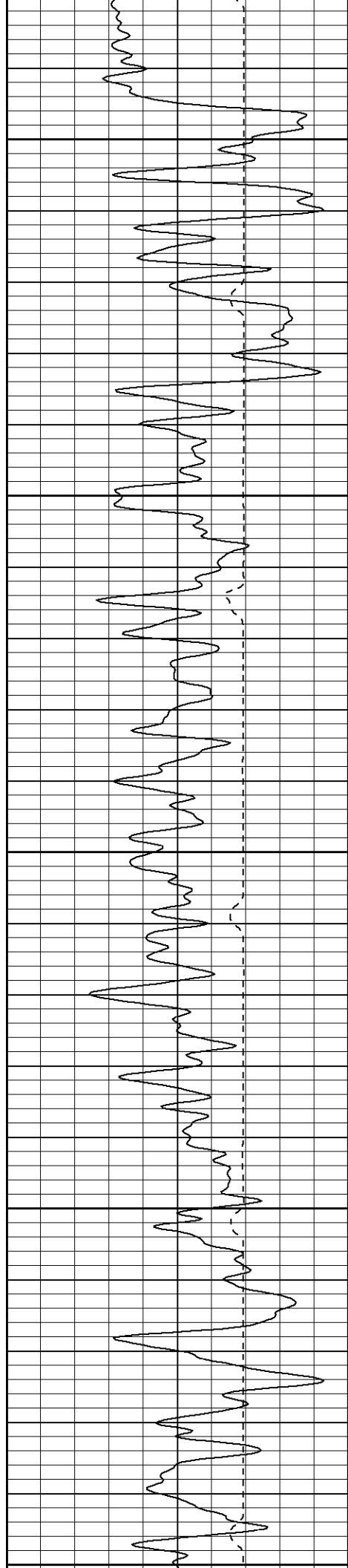
500

Surface Casing

550

600





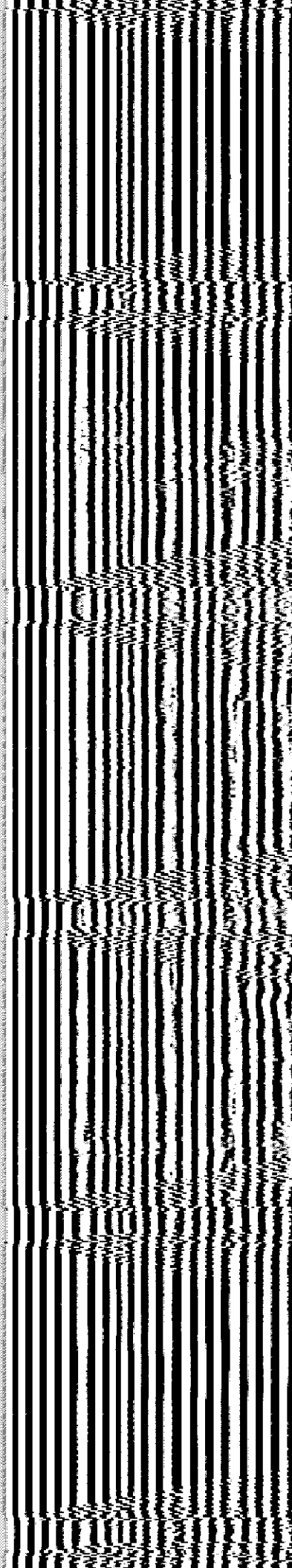
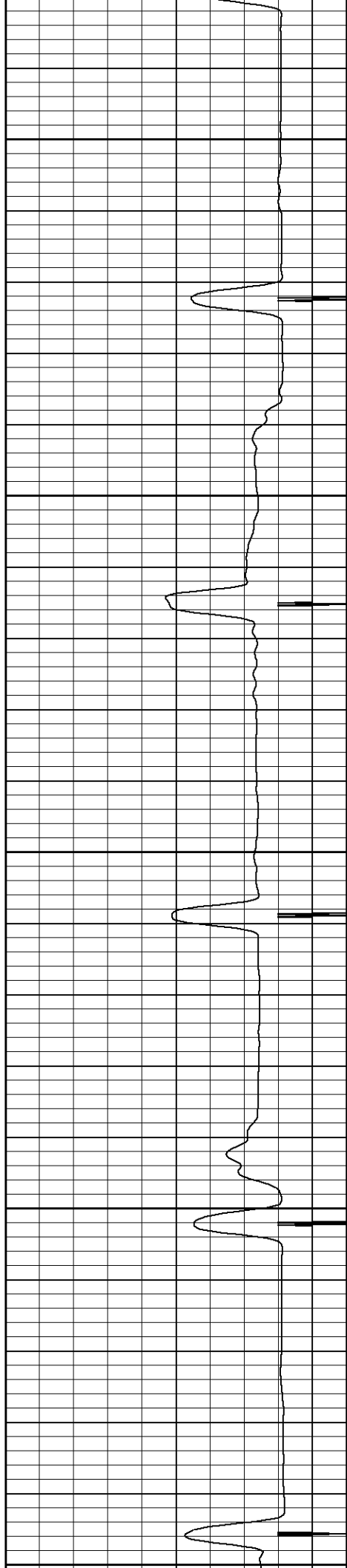
650

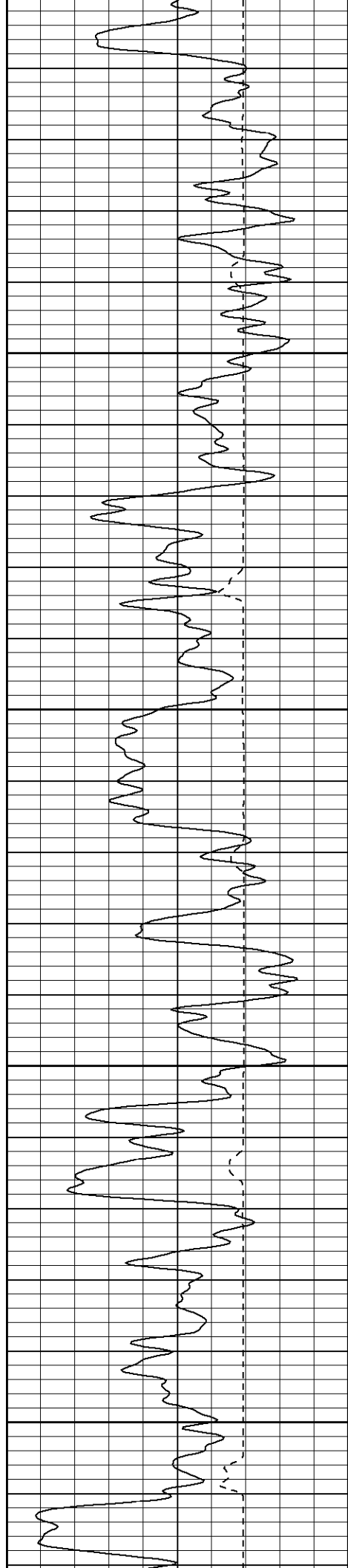
700

750

800

850





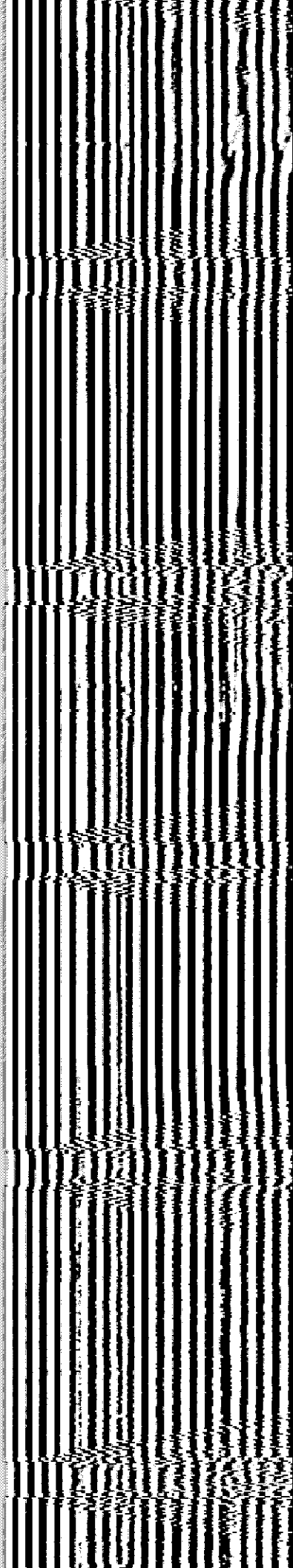
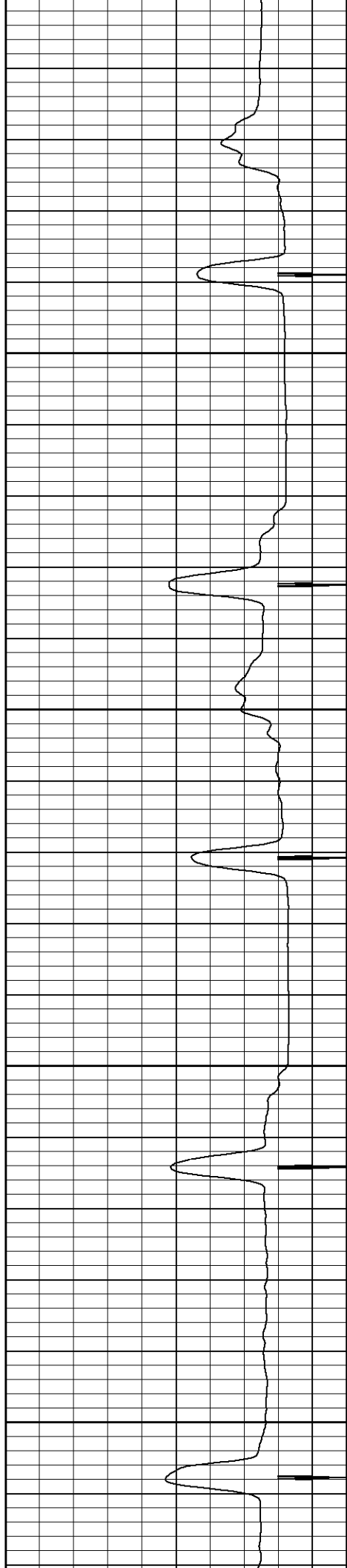
880

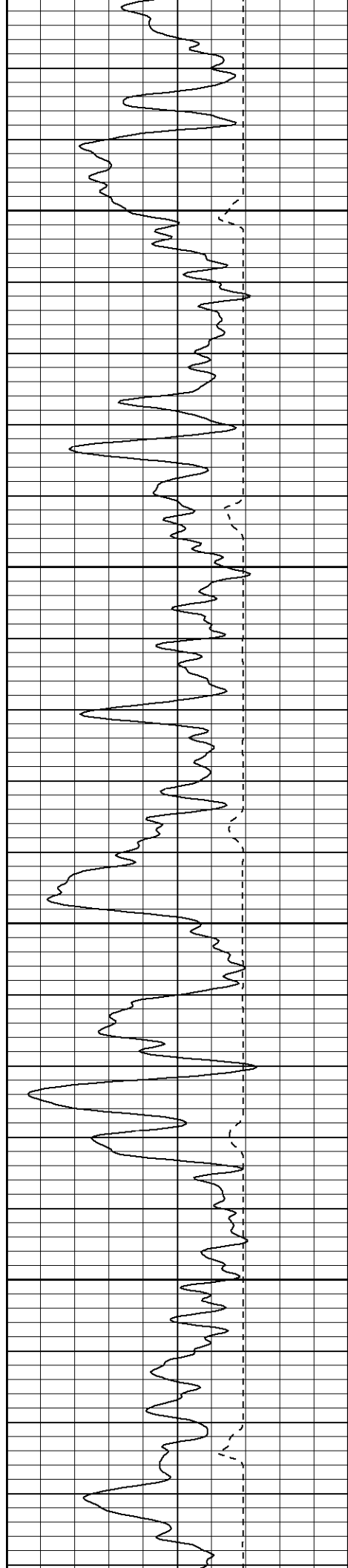
900

950

1000

1050



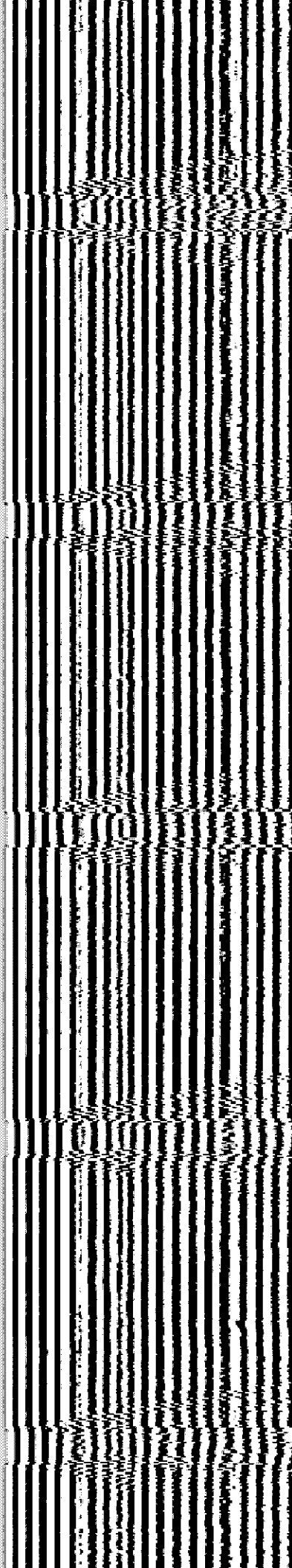
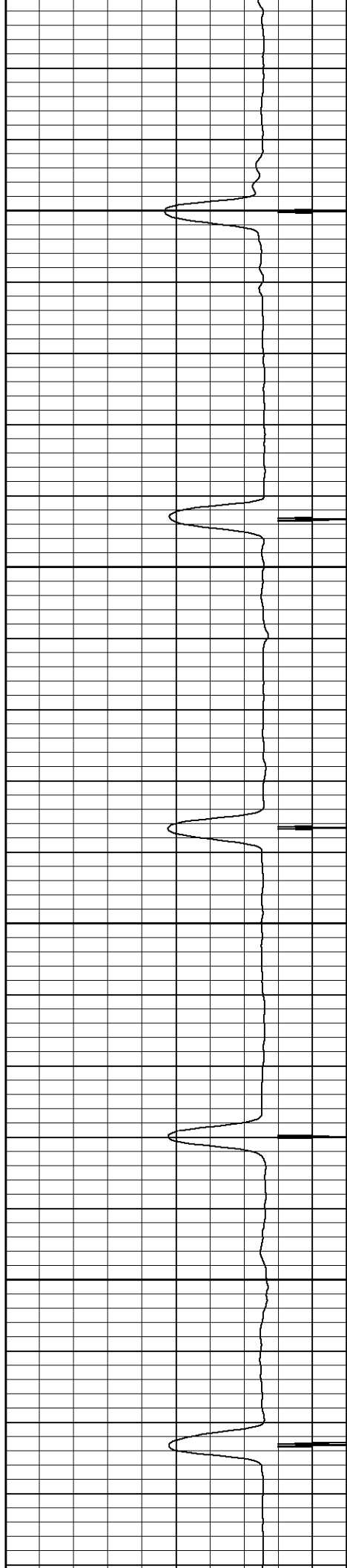


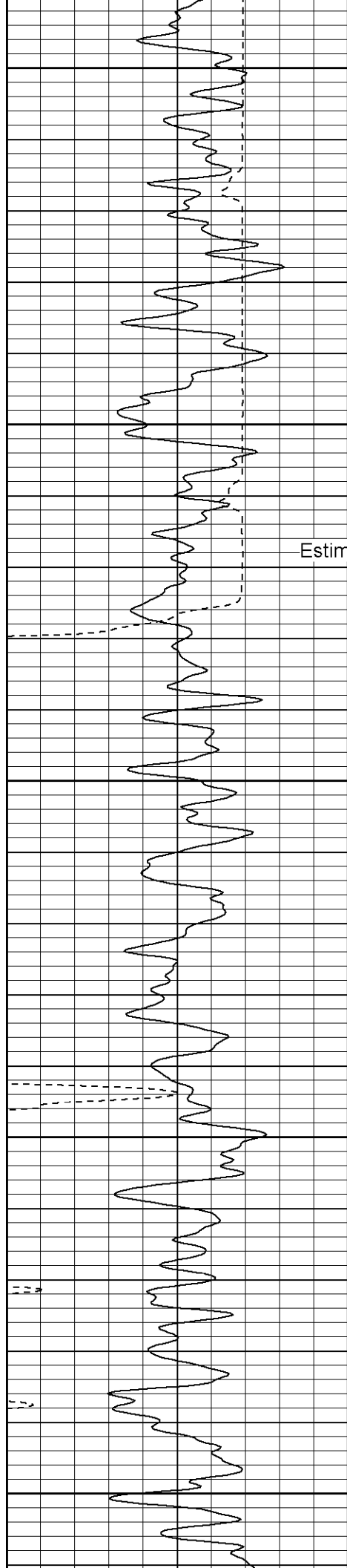
1100

1150

1200

1250





1300

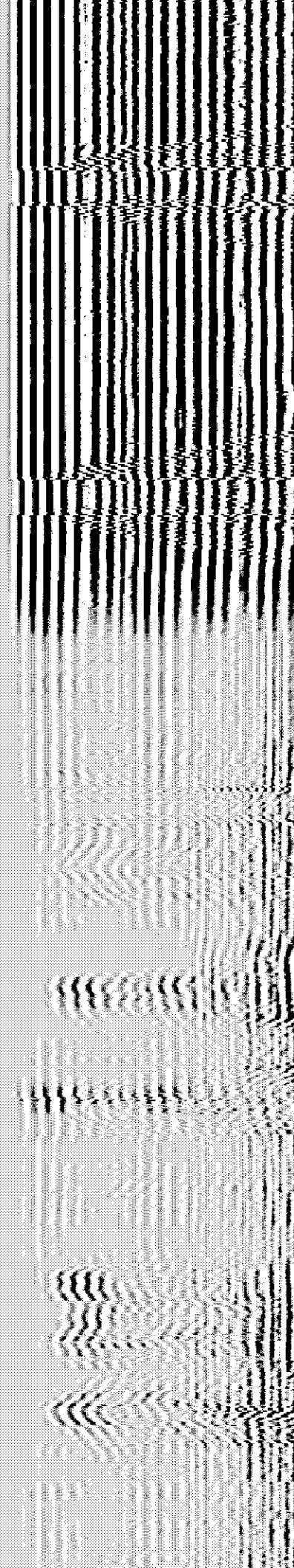
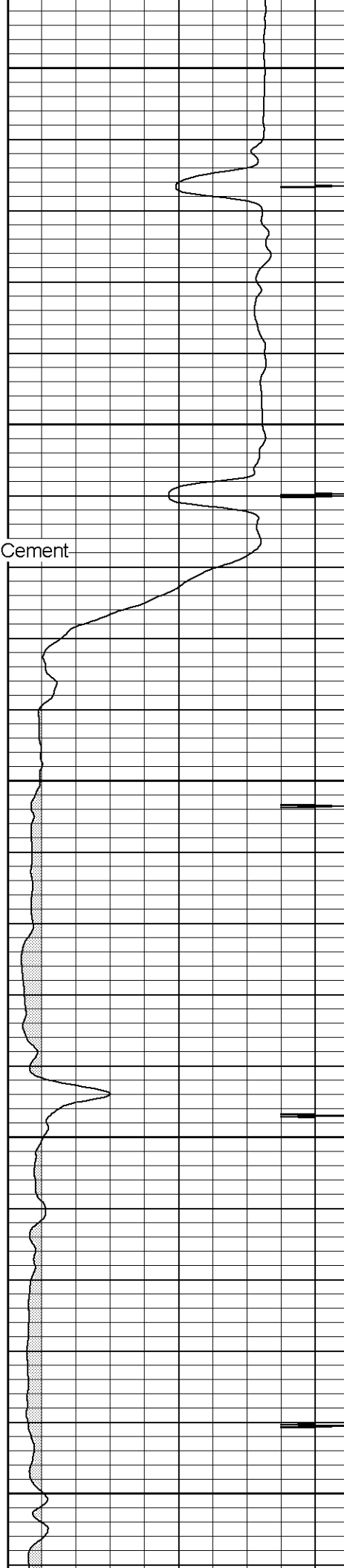
1350

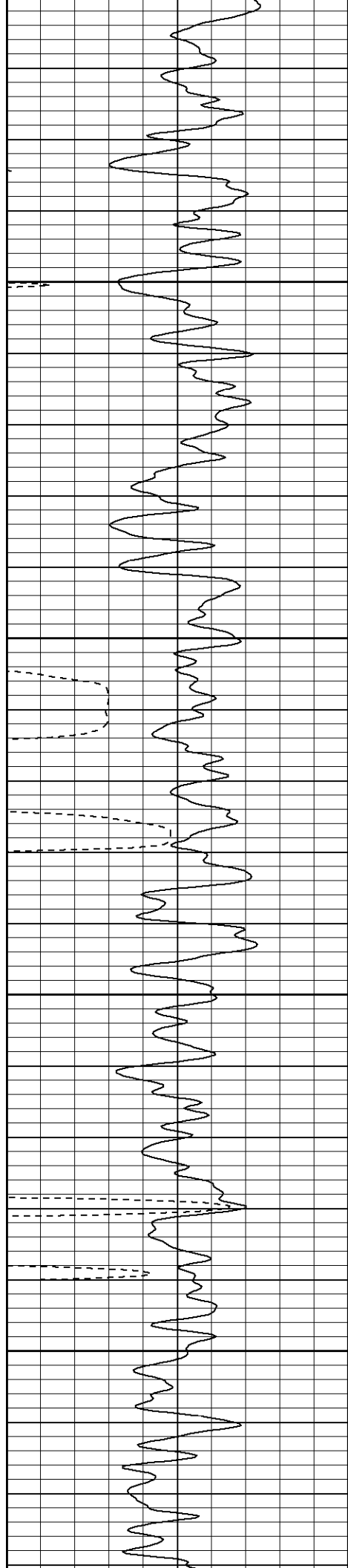
Estimated Top of Cement

1400

1450

1500



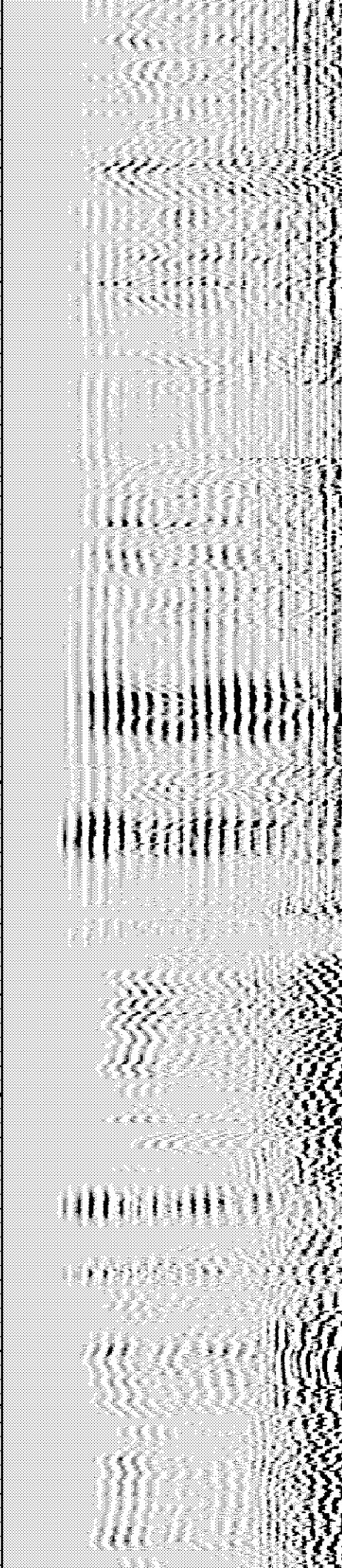
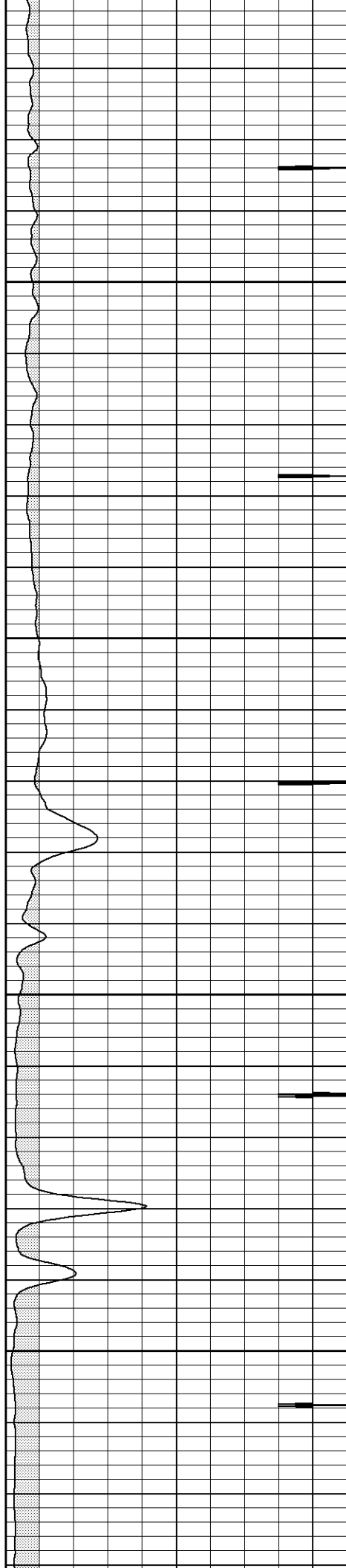


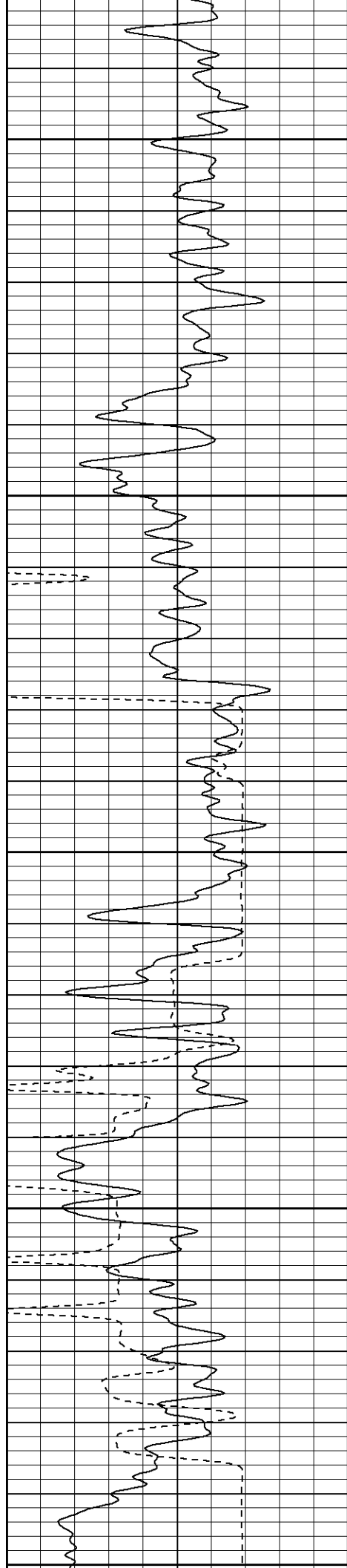
1550

1600

1650

1700





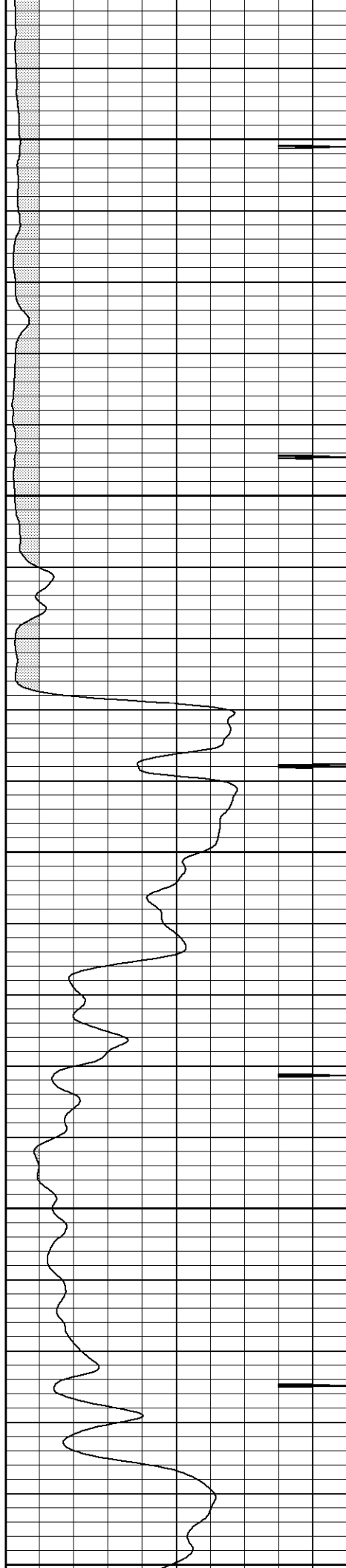
1750

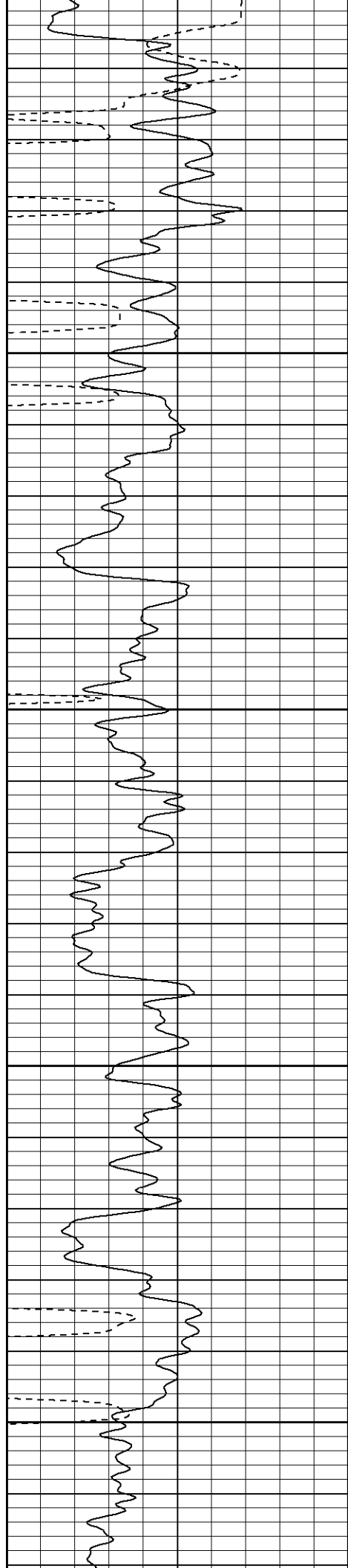
1800

1850

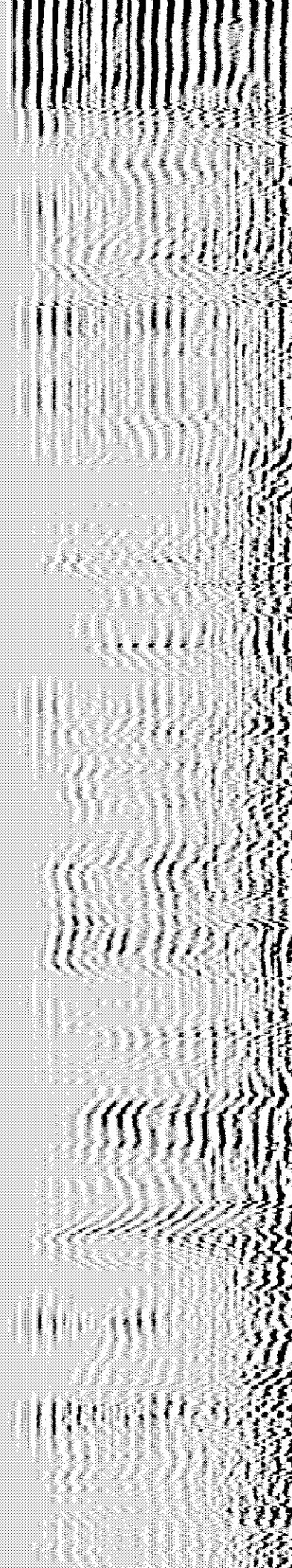
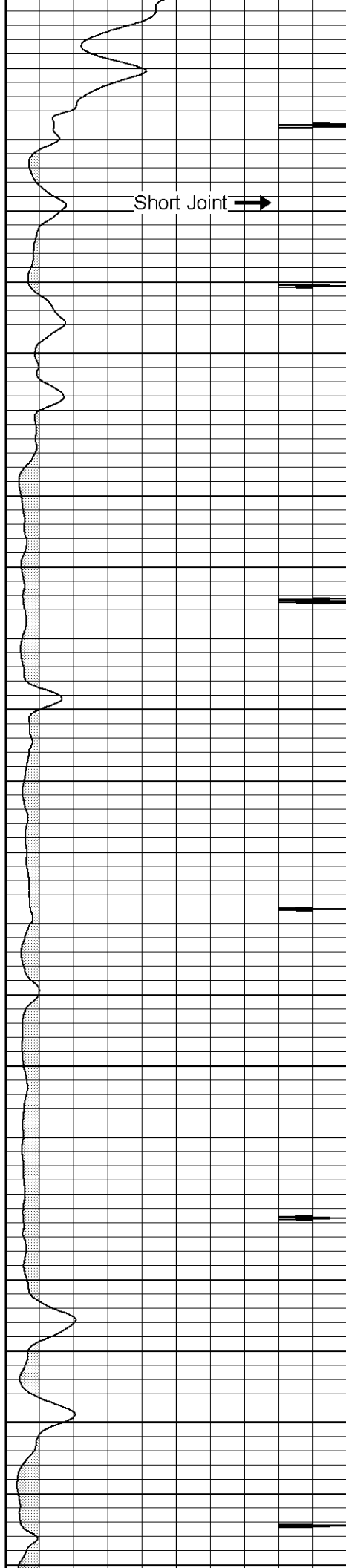
1900

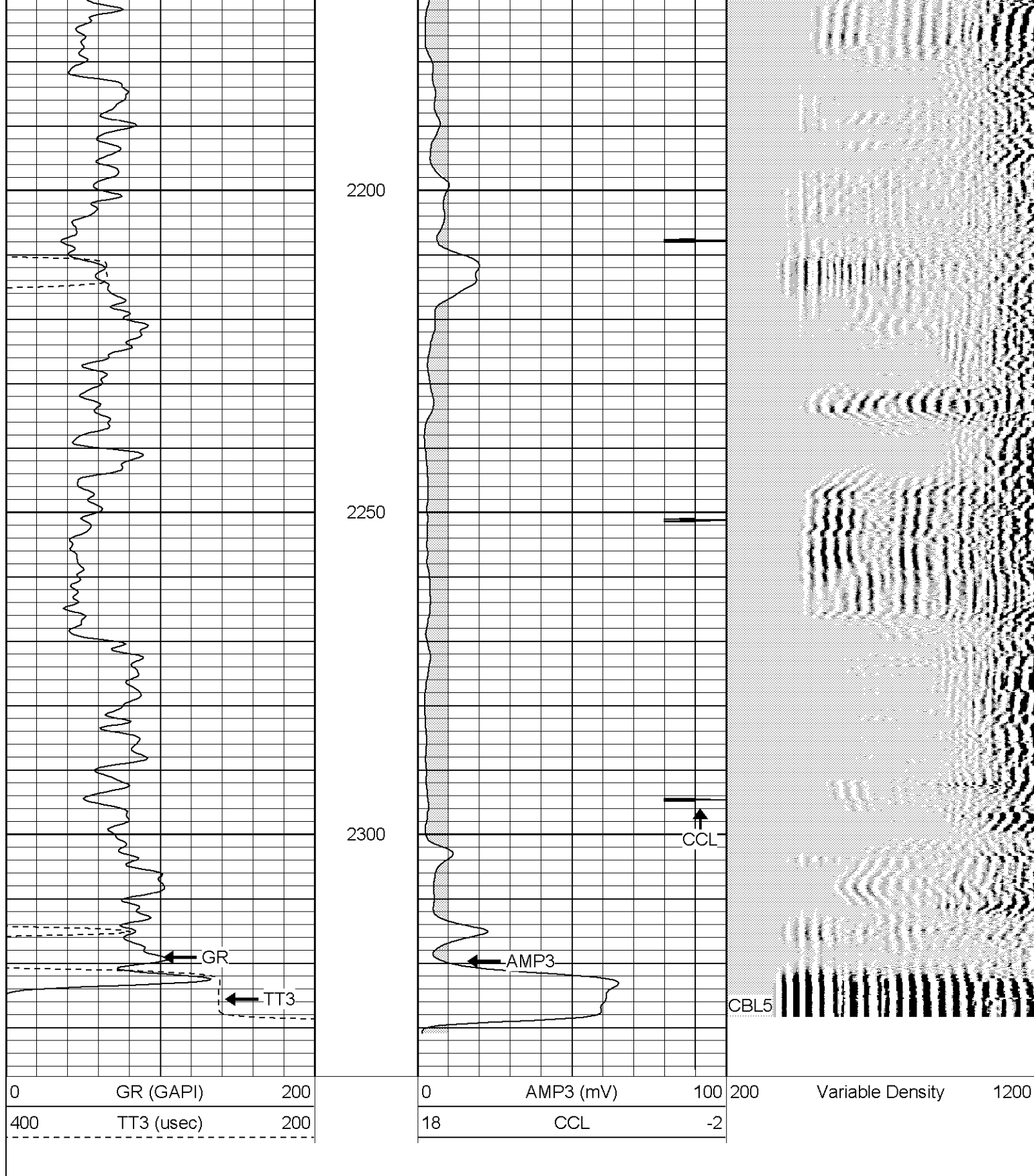
1950





1950
2000
2050
2100
2150





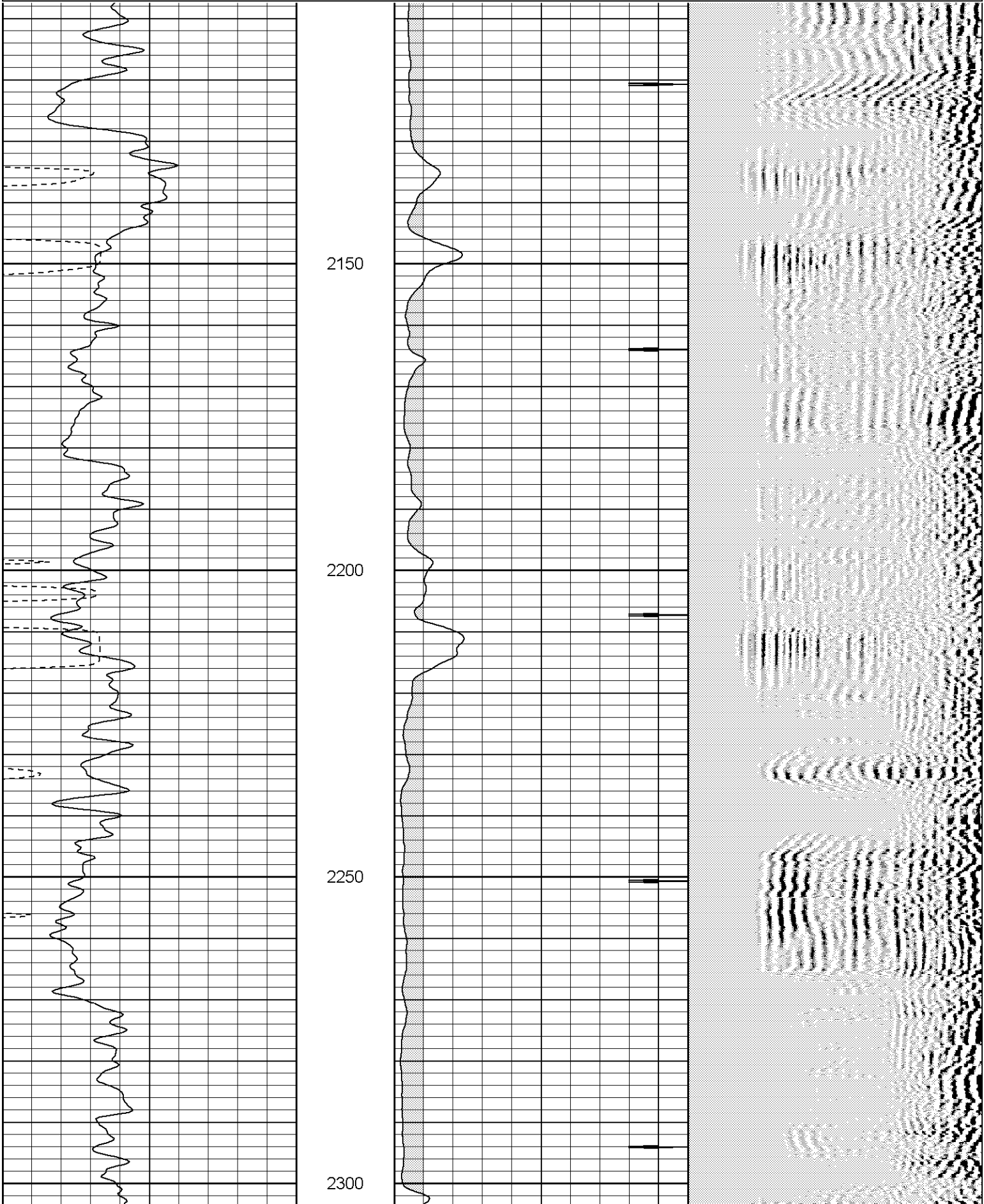
SUPERIOR

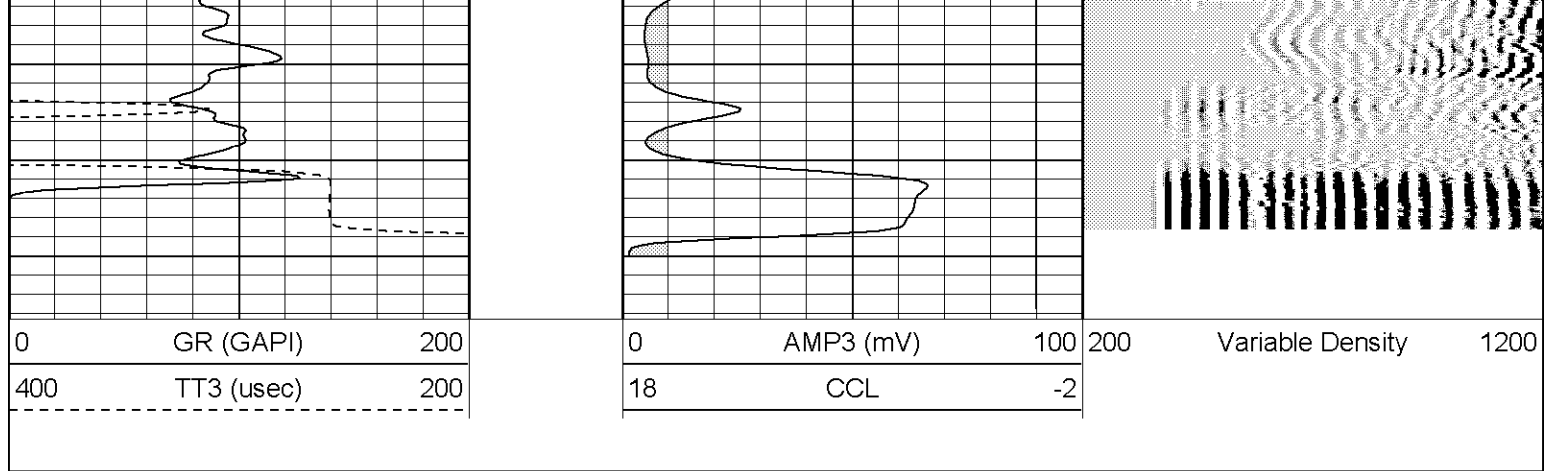
Black Lick, Pa.
Mercer, Pa.
Wooster, Oh.
Cleveland, Ok.
Trinidad, Co.

Repeat Section

Database File: hillclimb110906b.db
Dataset Pathname: pass1.1
Presentation Format: cblrt

0	GR (GAPI)	200	0	AMP3 (mV)	100	200	Variable Density	1200
400	TT3 (usec)	200	18	CCL	-2			





Calibration Report

Database File: hillclimb110906b.db
 Dataset Pathname: pass2
 Dataset Creation: Thu Nov 09 10:45:27 2006 by Log Open-Cased 060407

Cement Bond Log Calibration Report

Serial Number:	Titan3		
Tool Model:	T3		
Performed:	Thu Nov 09 10:31:09 2006		
Depth:	0	ft	
Casing Diameter:	0	in	
	3' Spacing	5' Spacing	
Signal Zero:	1	1	mV
Calibrated Amplitude:	85	85	mV
Reading at Signal Zero:	-0.01	0	V
Reading in Free Pipe:	1.35	1.85	V
Gain:	61.7647	45.4054	
Offset:	1.61765	1	

Gamma Ray Calibration Report

Serial Number:	Titan3	
Tool Model:	T3	
Performed:	Tue Oct 24 08:19:45 2006	
Calibrator Value:	1.0	GAPI
Background Reading:	0.0	cps
Calibrator Reading:	1.0	cps
Sensitivity:	1.1500	GAPI/cps

Sensor	Offset (ft)	Schematic	Description	Len (ft)	OD (in)	Wt (lb)
CHD	15.66		None	0.75	1.50	5.00
GR	13.64		GR-T3 (Titan3)	2.52	2.25	25.00
WVF5	9.49		CBL-T3 (Titan3)	7.23	2.25	110.00
WVF3	8.49					
CENT	5.15		Titan3			

