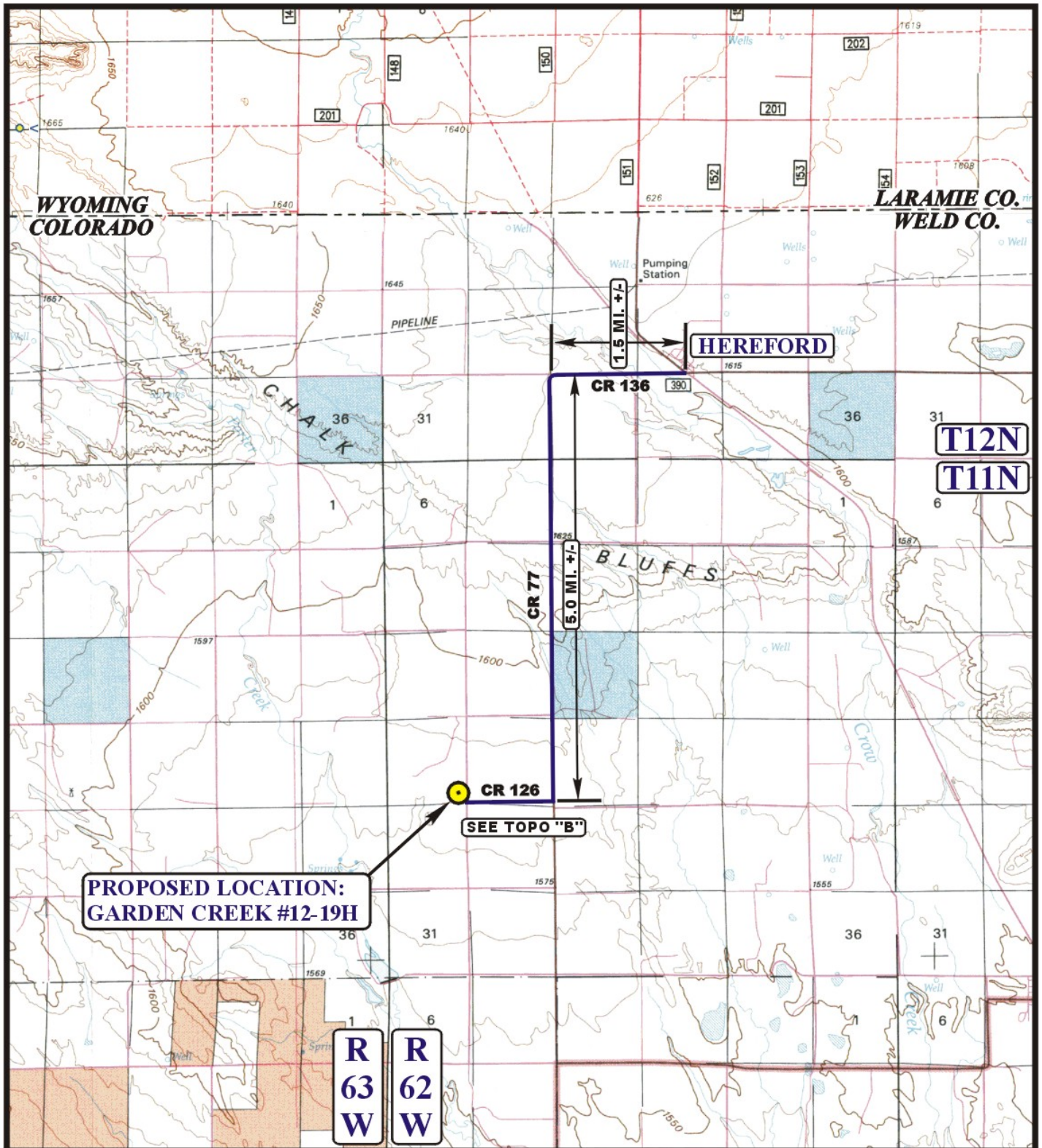


EOG RESOURCES, INC.
GARDEN CREEK #12-19H
SECTION 19, T11N, R62W, 6th P.M.

PROCEED IN A WESTERLY DIRECTION FROM HEREFORD, COLORADO ON COUNTY ROAD 136 APPROXIMATELY 1.5 MILES TO THE JUNCTION OF COUNTY ROAD 136 AND COUNTY ROAD 77 TO THE SOUTH; TURN LEFT AND PROCEED IN A SOUTHERLY DIRECTION APPROXIMATELY 5.0 MILES TO THE JUNCTION OF COUNTY ROAD 77 AND COUNTY ROAD 126 TO THE WEST; TURN RIGHT AND PROCEED IN A WESTERLY DIRECTION APPROXIMATELY 1.0 MILES TO THE JUNCTION OF COUNTY ROAD 126 AND COUNTY ROAD 75 TO THE NORTH; TURN RIGHT AND PROCEED IN A NORTHERLY DIRECTION APPROXIMATELY 0.1 MILES TO THE BEGINNING OF THE PROPOSED ACCESS ROAD TO THE WEST; FOLLOW ROAD FLAGS IN A WESTERLY DIRECTION APPROXIMATELY 300' TO THE PROPOSED LOCATION.

TOTAL DISTANCE FROM HEREFORD, COLORADO TO THE PROPOSED LOCATION IS APPROXIMATELY 7.6 MILES.



LEGEND:

● PROPOSED LOCATION



EOG RESOURCES, INC.

GARDEN CREEK #12-19H
SECTION 19, T11N, R62W, 6th P.M.
650' FSL 502' FEL



Uintah Engineering & Land Surveying
85 South 200 East Vernal, Utah 84078
(435) 789-1017 * FAX (435) 789-1813

ACCESS ROAD
MAP

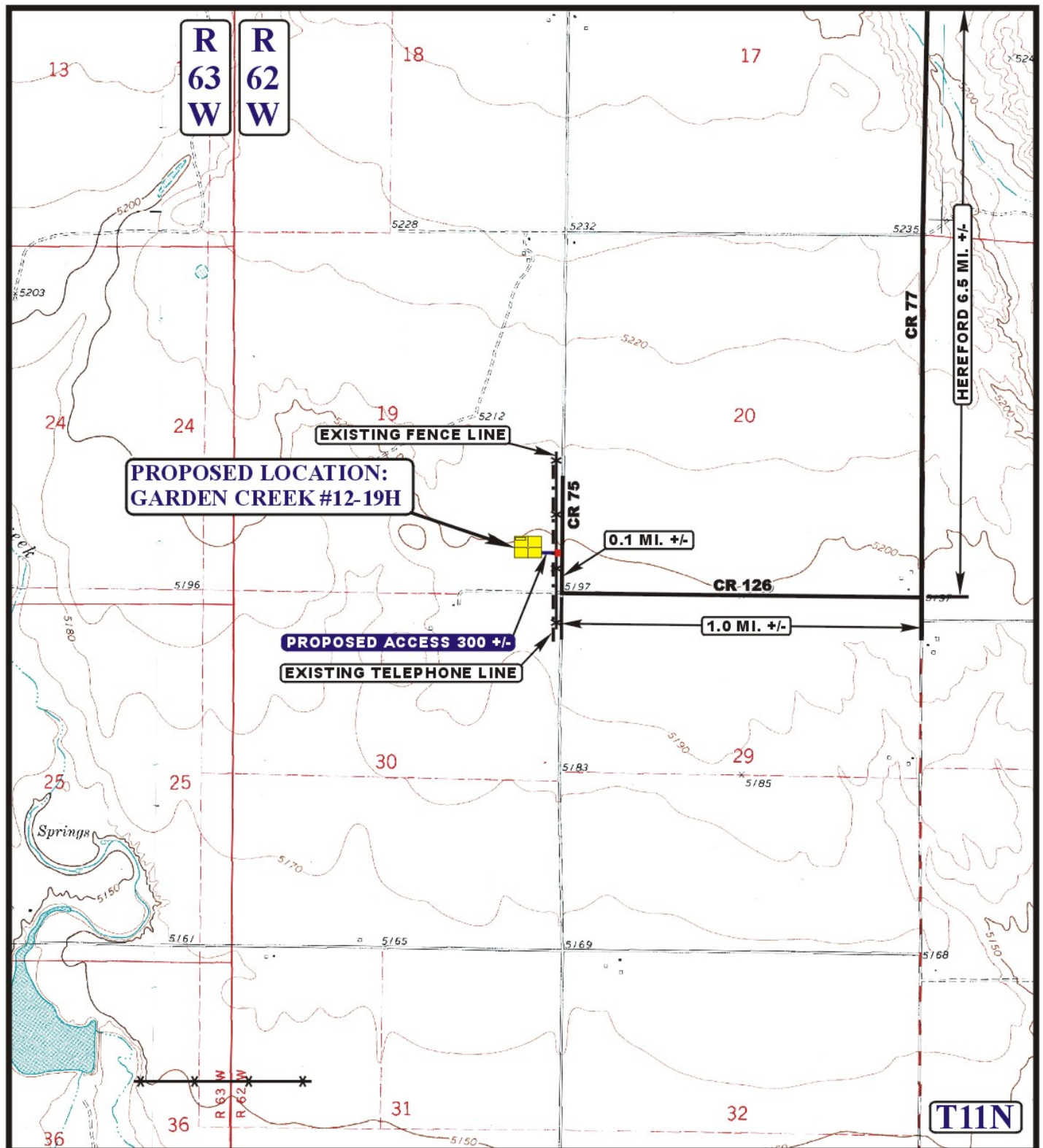
02 **19** **10**
MONTH DAY YEAR

SCALE: 1:100,000

DRAWN BY: Z.L.

REVISED: 07-07-10





LEGEND:

EXISTING ROAD
 PROPOSED ACCESS ROAD
 EXISTING FENCE
 OVERHEAD POWERLINE

EOG RESOURCES, INC.

GARDEN CREEK #12-19H
SECTION 19, T11N, R62W, 6th P.M.
650' FSL 502' FEL



Uintah Engineering & Land Surveying
 85 South 200 East Vernal, Utah 84078
 (435) 789-1017 * FAX (435) 789-1813



ACCESS ROAD
MAP

02 **19** **10**
 MONTH DAY YEAR

SCALE: 1" = 2000' DRAWN BY: Z.L. REVISED: 07-07-10

B
 TOPO