

CHEVRON USA, INC.

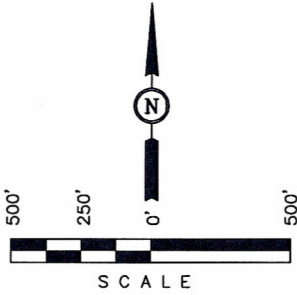
BOTTOM HOLE DIAGRAM FOR

EMERALD #93X & #94X
SECTION 26, T2N, R103W, 6th P.M.
SE 1/4 SE 1/4

NE 1/4

FIGURE #5

DATE: 11-09-10
DRAWN BY: S.L.



26

1/4 Section Line

1989 Alum. Cap,
0.7' High, T-Post
Lat: 40.114028°
Long: 108.914219°

**C.R.
Stoffer
Lands**

**B.L.M.
(U.S.A.)**

SW 1/4

SE 1/4

1/16 Section Line

EMERALD #93X
BOTTOM HOLE
(1303' FSL 2385' FEL)

LINE TABLE		
LINE	DIRECTION	LENGTH
L1	N86°53'02"W	1322.70'
L2	S07°56'03"W	1042.52'

1/4 Section Line

1/16 Section Line

**C.R.
Stoffer
Lands**

**B.L.M.
(U.S.A.)**

Section Line

N02°06'45"E - 2636.35' (Meas.)

EMERALD #94X
BOTTOM HOLE
(206' FSL 1160' FEL)

2010 UELS Alum.
Cap, 0.4' High,
Steel Post
Lat: 40.106792°
Long: 108.914211°

Set Marked Stone,
Pile of Stones,
Steel Post
Lat: 40.106739°
Long: 108.923889°

Section Line

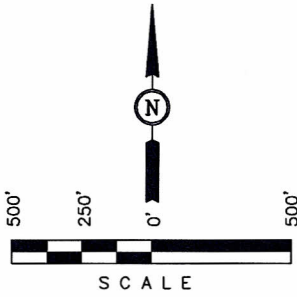
CHEVRON USA, INC.

LOCATION DRAWING FOR

EMERALD #93X & #94X
SECTION 26, T2N, R103W, 6th P.M.
SE 1/4 SE 1/4

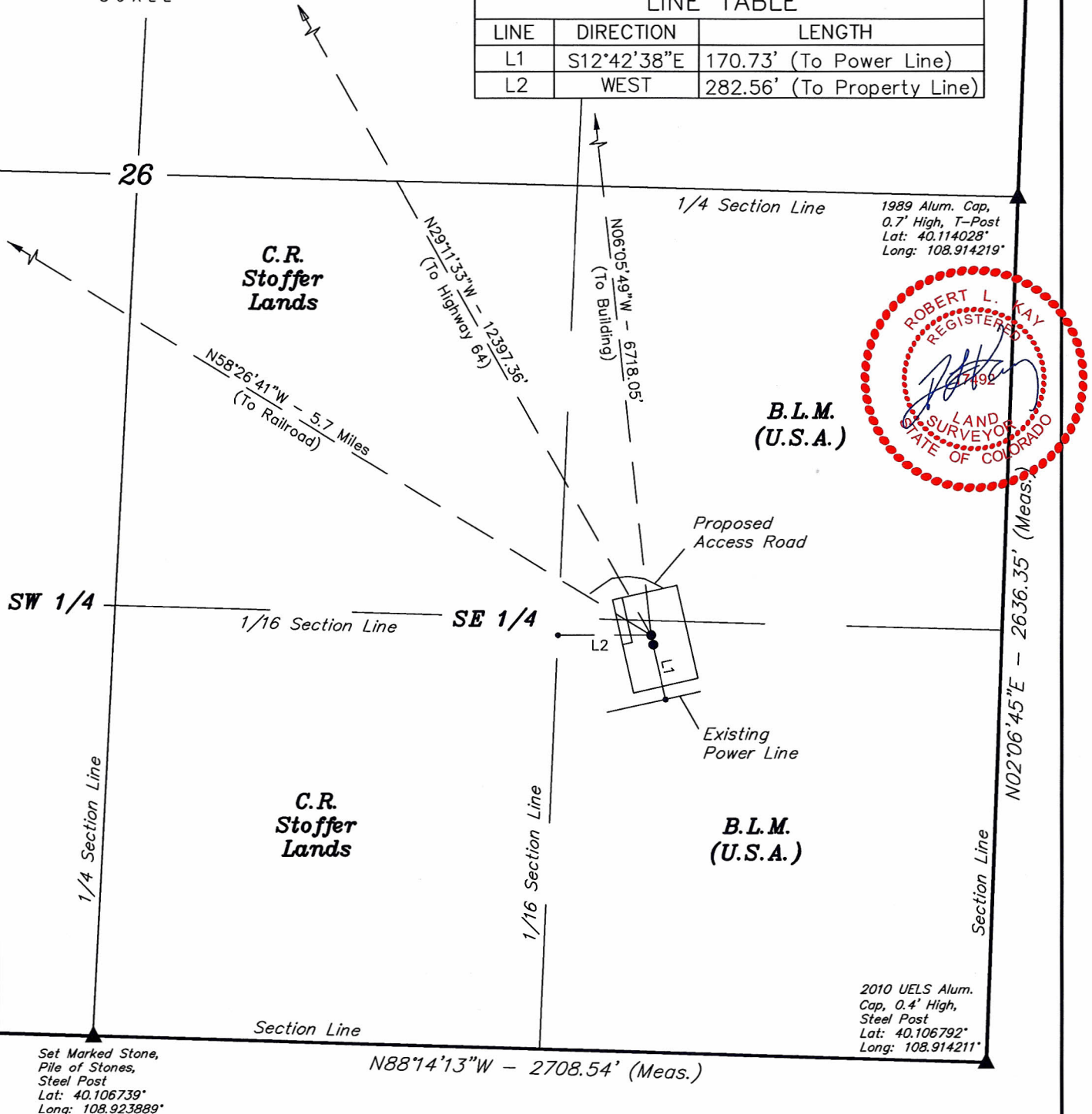
FIGURE #4

DATE: 10-21-10
DRAWN BY: S.L.
REVISED: 11-09-10



NE 1/4

LINE TABLE		
LINE	DIRECTION	LENGTH
L1	S12°42'38"E	170.73' (To Power Line)
L2	WEST	282.56' (To Property Line)



UINTAH ENGINEERING & LAND SURVEYING
85 So. 200 East * Vernal, Utah 84078 * (435) 789-1017