

CHEVRON USA, INC.
EMERALD #93X & #94X
LOCATED IN RIO BLANCO COUNTY, COLORADO
SECTION 26, T2N, R103W, 6th P.M.

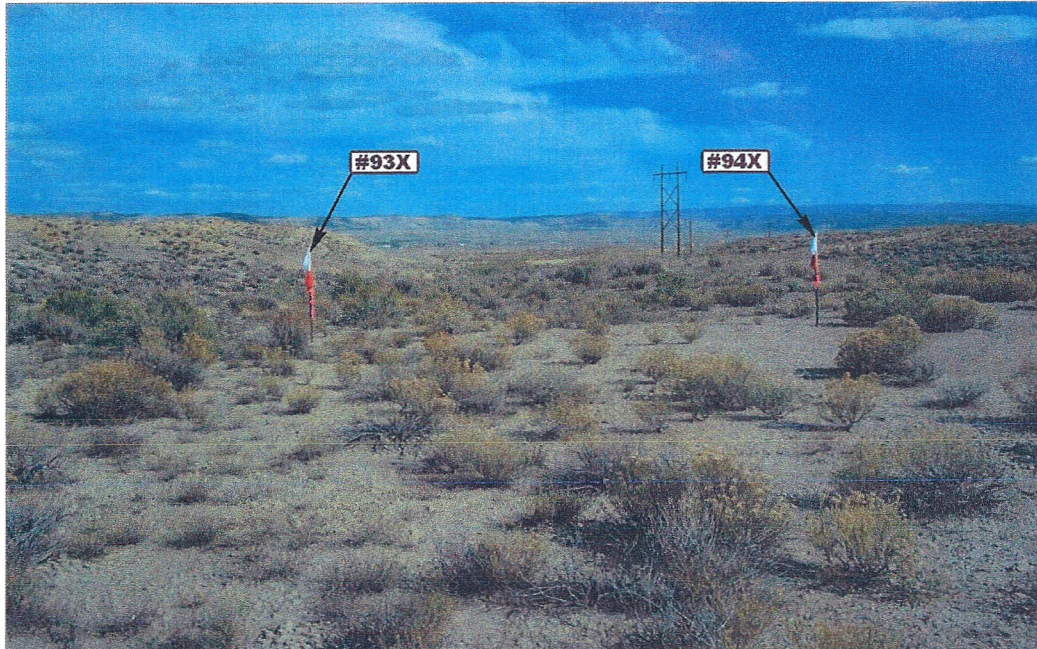


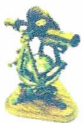
PHOTO: VIEW FROM CORNER #5 TO LOCATION STAKES

CAMERA ANGLE: EASTERLY



PHOTO: VIEW FROM BEGINNING OF PROPOSED ACCESS

CAMERA ANGLE: NORTHEASTERLY



- Since 1964 -

UELS Uintah Engineering & Land Surveying
85 South 200 East Vernal, Utah 84078
(435) 789-1017 * FAX (435) 789-1813

LOCATION PHOTOS

10 **28** **10**
MONTH DAY YEAR

PHOTO

P1

TAKEN BY: J.E.

DRAWN BY: J.J.

REVISED: 00-00-00

CHEVRON USA, INC.
EMERALD #93X & #94X
LOCATED IN RIO BLANCO COUNTY, COLORADO
SECTION 26, T2N, R103W, 6th P.M.



PHOTO: VIEW OF LOCATION STAKES

CAMERA ANGLE: NORTHERLY



PHOTO: VIEW OF LOCATION STAKES

CAMERA ANGLE: EASTERLY



• Since 1964 •

UELS

Uintah Engineering & Land Surveying
85 South 200 East Vernal, Utah 84078
(435) 789-1017 * FAX (435) 789-1813

LOCATION PHOTOS

10 | 28 | 10
MONTH | DAY | YEAR

TAKEN BY: J.F.

DRAWN BY: J.J.

REVISED: 00-00-00

PHOTO

P2

CHEVRON USA, INC.
EMERALD #93X & #94X
LOCATED IN RIO BLANCO COUNTY, COLORADO
SECTION 26, T2N, R103W, 6th P.M.

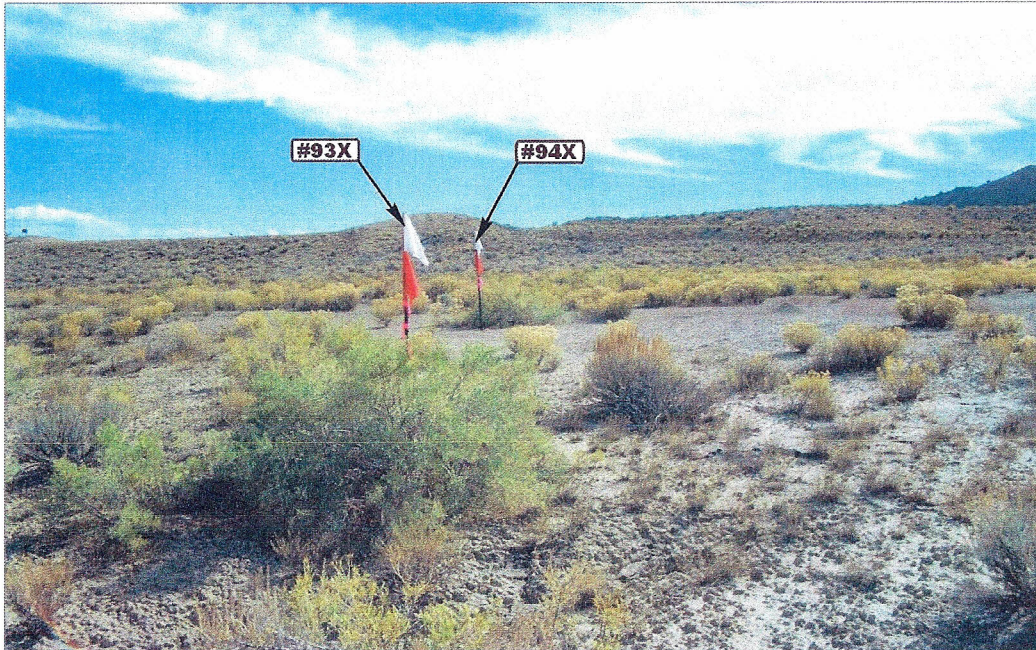


PHOTO: VIEW OF LOCATION STAKES

CAMERA ANGLE: SOUTHERLY

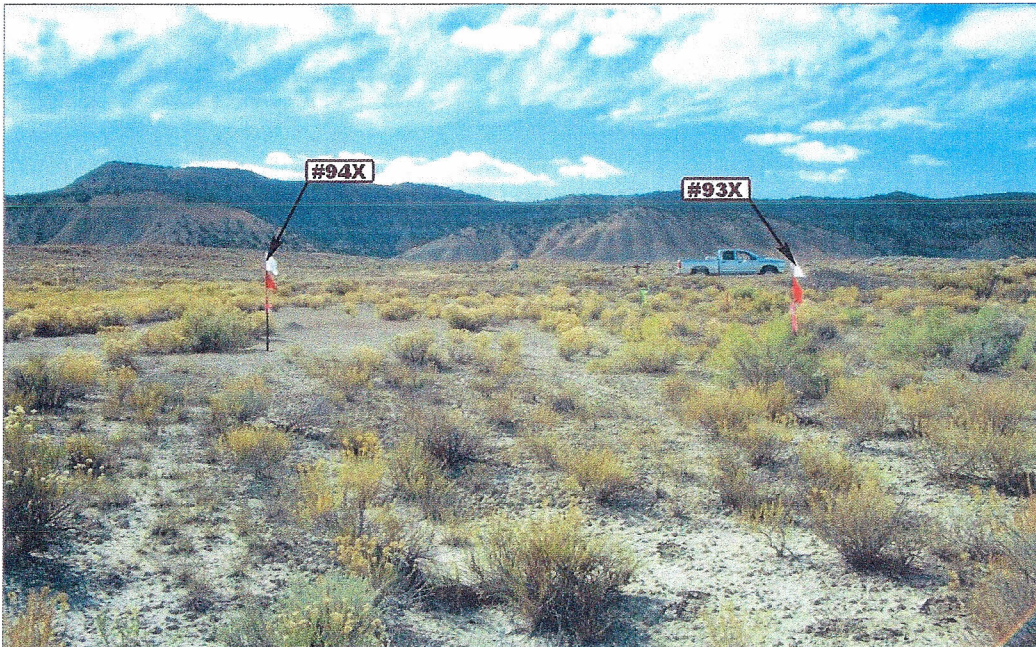
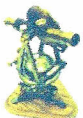


PHOTO: VIEW OF LOCATION STAKES

CAMERA ANGLE: WESTERLY



- Since 1964 -



Uintah Engineering & Land Surveying
85 South 200 East Vernal, Utah 84078
(435) 789-1017 * FAX (435) 789-1813

LOCATION PHOTOS

10 28 10
MONTH DAY YEAR

PHOTO
P3

TAKEN BY: J.F.

DRAWN BY: J.J.

REVISED: 00-00-00