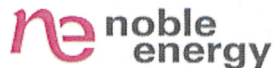


1625 Broadway
Suite 2000
Denver, CO 80202

Tel: 303.228.4000
Fax: 303.228.4280
www.nobleenergyinc.com



December 2, 2010

Colorado Oil and Gas Conservation Commission
The Chancery Building
1120 Lincoln Street, Suite 801
Denver, CO 80203

Attn: Mr. David Neslin, Director

RE: UPRC G07-99HZ
Niobrara New Drill
Township 4 North, Range 65 West, 6th P.M.
Section 8: NW/4SW/4: 1984' FSL & 609' FWL (Surface Location)
Section 7: NE/4SW/4: 1797' FSL & 535' FEL (Beginning of Lateral)
Section 7: SW/4SW/4: 1060' FSL & 535' FWL (End of Lateral)
Weld County, Colorado

Mr. Neslin:

Noble Energy, Inc. ("NEI") is planning to drill the captioned boundary well in accordance with the provisions of COGCC Rule 318A.e.

NEI's proposed wellbore spacing unit consists of the S/2 Sec. 7, T4N, R65W, creating a 320-acre wellbore spacing unit for the Niobrara formation. NEI is the only owner within the proposed wellbore spacing unit, therefore NEI hereby attests that no notice letters are required under COGCC Rule 318A.e.(6).

Enclosed are copies of the following documents to assist you in your review and approval of NEI's proposed APD for the captioned well:

- Map illustrating the proposed wellbore spacing unit.
- Plat illustrating proposed wellbore spacing unit on existing location plat.

Thank you for your attention to the enclosed. NEI respectfully requests that the COGCC review the enclosed information and approve the Application for Permit to Drill the captioned well.

Sincerely,

A handwritten signature in blue ink, appearing to read 'Jan Kajiwar'.

Jan Kajiwar
Regulatory Analyst III
Noble Energy Inc.

UPRC G07-99HZ

Proposed Spacing Unit – Noble Energy, Inc

S/2 Section 7, Township 4 North, Range 65 West



Legend



Proposed 320 acre spacing unit



Bottom Hole Location



Bottom Hole Located S/2, Sec. 7, T4N, R65W

The governmental 1/4 Section has less than 8 bottom hole wells producing from the Codell, Niobrara, and J-Sand formations.

Steel Surveying Services, LLC

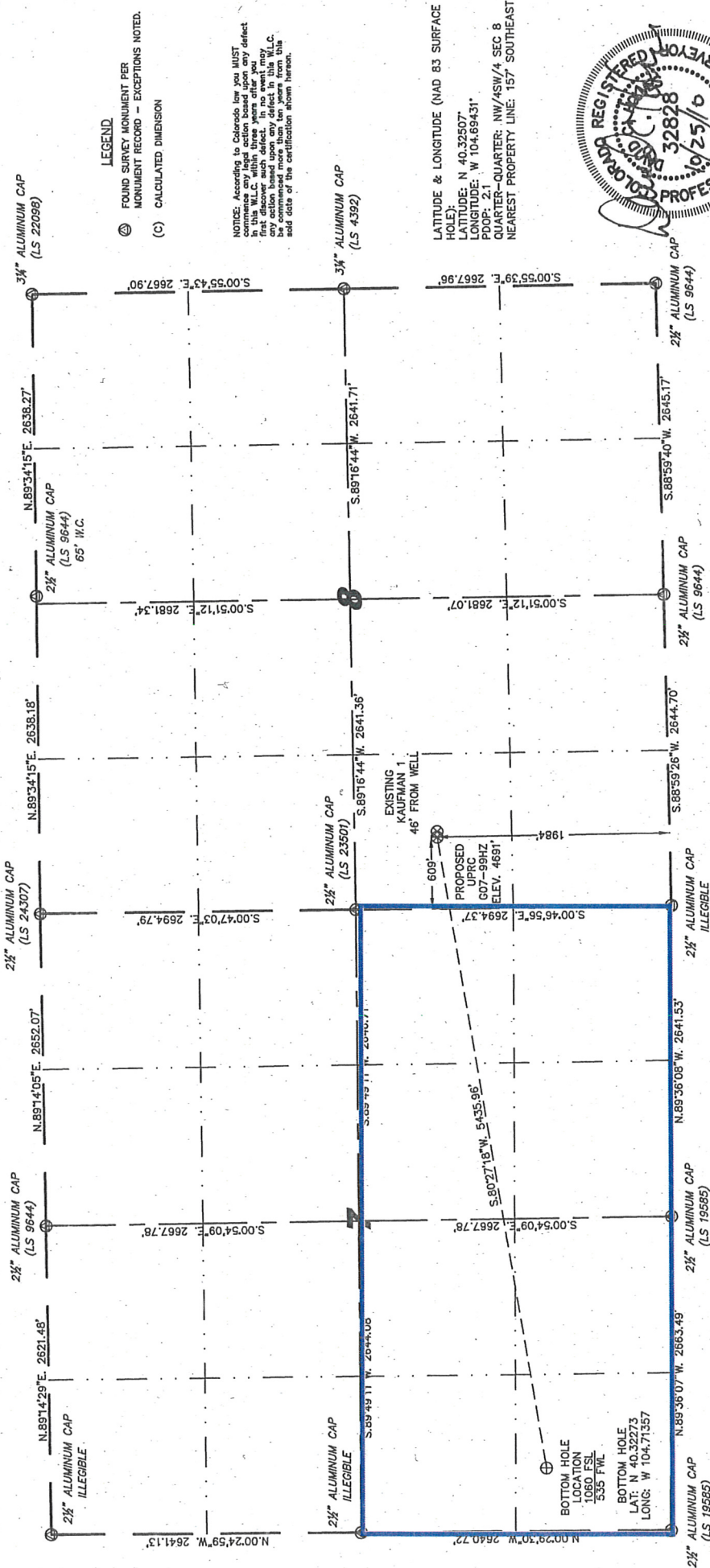
1102 West 19th Street P.O. BOX 2073

Cheyenne, Wyoming 82009

WELL LOCATION CERTIFICATE

THIS MAP DOES NOT REPRESENT A BOUNDARY SURVEY

SECTION 8
TOWNSHIP 4 NORTH
RANGE 65 WEST



IN ACCORDANCE WITH A REQUEST FROM ROBBIE MILLER - NOBLE ENERGY INC. STEEL SURVEYING SERVICES, LLC HAS DETERMINED THE LOCATION OF THE SURFACE HOLE OF THE UPRC 607-99HZ WELL TO BE 1984' FSL, 609' FWL, AS MEASURED AT NINETY (90) DEGREES FROM THE SECTION LINES, SECTIONS 8, TOWNSHIP 4 NORTH, RANGE 65 WEST, 6TH PRINCIPLE MERIDIAN, WELD COUNTY, COLORADO.

I HEREBY CERTIFY THAT THIS WELL LOCATION CERTIFICATE WAS PREPARED BY ME, OR UNDER MY DIRECT SUPERVISION, THAT THE FIELD WORK WAS COMPLETED ON 09/08/2010, FOR AND ON BEHALF OF NOBLE ENERGY INC. THAT IT IS NOT A LAND SURVEY PLAT OR AN IMPROVEMENT SURVEY PLAT, AND THAT IT IS NOT TO BE USED UPON FOR ESTABLISHMENT OF FENCE, BUILDING, OR OTHER FUTURE IMPROVEMENT LINES.

- NOTES:
- 1) BASIS OF BEARINGS FOR THIS MAP ARE BASED UPON GPS OBSERVATIONS MADE ON 05/18/2010 BETWEEN MONUMENTS LOCATED AT THE SOUTHEAST SECTION CORNER AND THE NORTHEAST SECTION CORNER OF SAID SECTION.
 - 2) ELEVATIONS ARE BASED UPON NGS OPUS SOLUTION NAVD 88 DATUM.
 - 3) THE NEAREST EXISTING WELL IS: KAUFMAN 1, 46' EAST.
 - 4) SEE VISIBLE IMPROVEMENTS EXHIBIT FOR ALL IMPROVEMENTS WITHIN 800'.
 - 5) THE LOCATION FALLS IN PASTURE LAND.



0 1000
Scale: 1" = 1000'



David C. Holmes
Professional Land
Surveyor Registration No. 32828
State of Colorado
JOB #10086

LEGEND

- (A) FOUND SURVEY MONUMENT PER MONUMENT RECORD - EXCEPTIONS NOTED.
- (C) CALCULATED DIMENSION

NOTICE: According to Colorado law you MUST correct any error in this W.L.C. within three years after you first discover such error. If no correction is made, the error will be deemed more than ten years from this date of the certification shown herein.

LATITUDE & LONGITUDE (NAD 83 SURFACE HOLE):
LATITUDE: N 40.32507°
LONGITUDE: W 104.69431°
PDOP: 2.1
QUARTER-QUARTER: NW/4SW/4 SEC 8
NEAREST PROPERTY LINE: 157' SOUTHEAST