

Stell Surveying Services, LLC

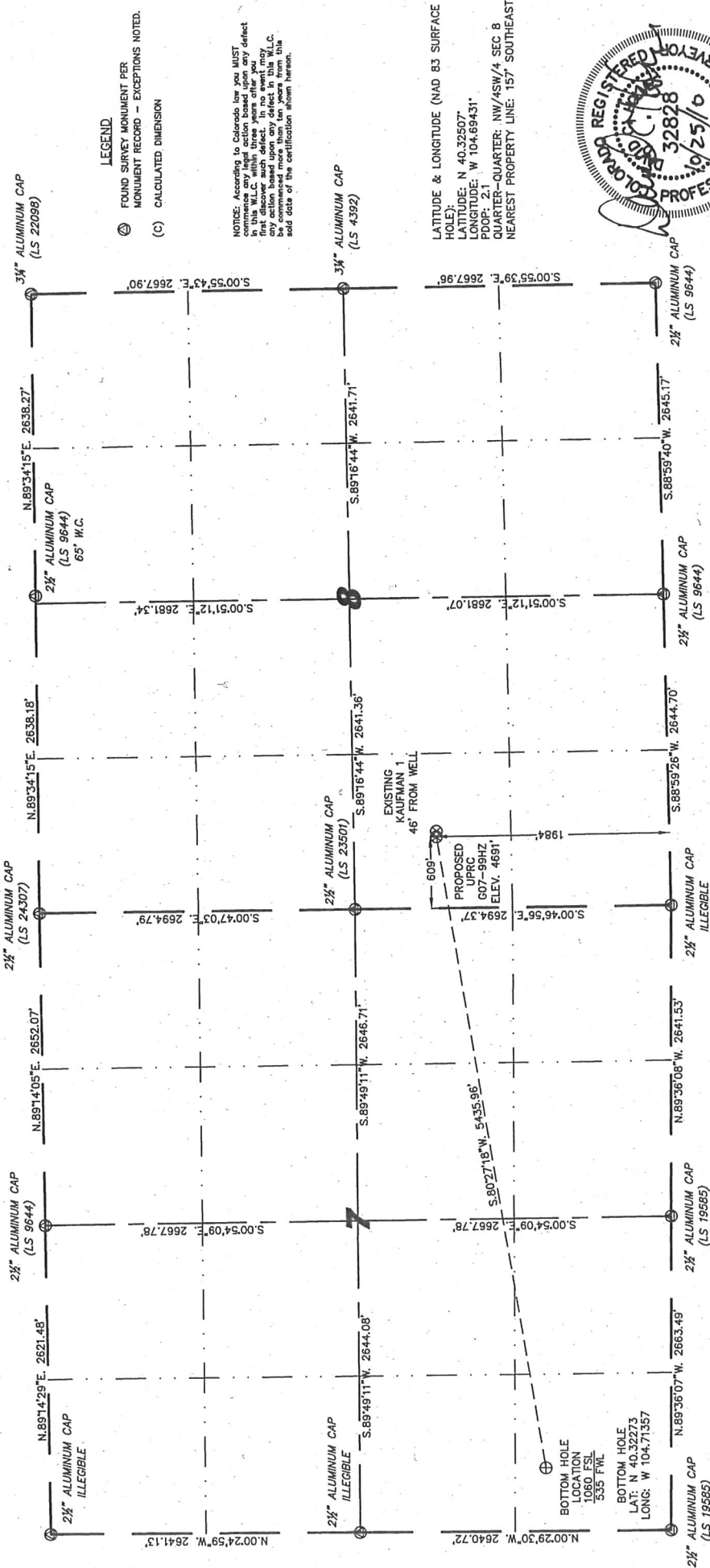
1102 West 19th Street P.O. BOX 2073

Cheyenne, Wyoming 82009

WELL LOCATION CERTIFICATE

THIS MAP DOES NOT REPRESENT A BOUNDARY SURVEY

SECTION 8
TOWNSHIP 4 NORTH
RANGE 65 WEST



I, ACCORDANCE WITH A REQUEST FROM ROBBIE MILLER - NOBLE ENERGY INC. STELL SURVEYING SERVICES, LLC HAS DETERMINED THE LOCATION OF THE SURFACE HOLE OF THE UPRC 607-99HZ WELL TO BE 1984' FSL, 609' FSL, AS MEASURED AT NINETY (90) DEGREES FROM THE SECTION LINES, SECTIONS 8, TOWNSHIP 4 NORTH, RANGE 65 WEST, 6TH PRINCIPLE MERIDIAN, WELD COUNTY, COLORADO.

I HEREBY CERTIFY THAT THIS WELL LOCATION CERTIFICATE WAS PREPARED BY ME, OR UNDER MY DIRECT SUPERVISION, THAT THE FIELD WORK WAS COMPLETED ON 09/08/2010, FOR AND ON BEHALF OF NOBLE ENERGY INC. THAT IT IS NOT A LAND SURVEY PLAT OR AN IMPROVEMENT SURVEY PLAT AND THAT THE FIELD WORK WAS COMPLETED UPON FOR ESTABLISHMENT OF FENCE, BUILDING, OR OTHER FUTURE IMPROVEMENT LINES.

- NOTES:
- 1) BASIS OF BEARINGS FOR THIS MAP ARE BASED UPON GPS OBSERVATIONS MADE ON 05/18/2010 BETWEEN MONUMENTS LOCATED AT THE SOUTHEAST SECTION CORNER AND THE NORTHEAST SECTION CORNER OF SAID SECTION 8, TOWNSHIP 4 NORTH, RANGE 65 WEST, 6TH PRINCIPLE MERIDIAN. ELEVATIONS ARE BASED UPON NGS OPUS SOLUTION NAVD 88 DATUM.
 - 2) THE NEAREST EXISTING WELL IS: KAUFMAN 1, 46' EAST.
 - 3) SEE VISIBLE IMPROVEMENTS EXHIBIT FOR ALL IMPROVEMENTS WITHIN 800'.
 - 4) THE LOCATION FALLS IN PASTURE LAND.



0 1000
Scale: 1" = 1000'



David C. Holmes
Professional Land
Surveyor Registration No. 32828
State of Colorado
JOB #10086

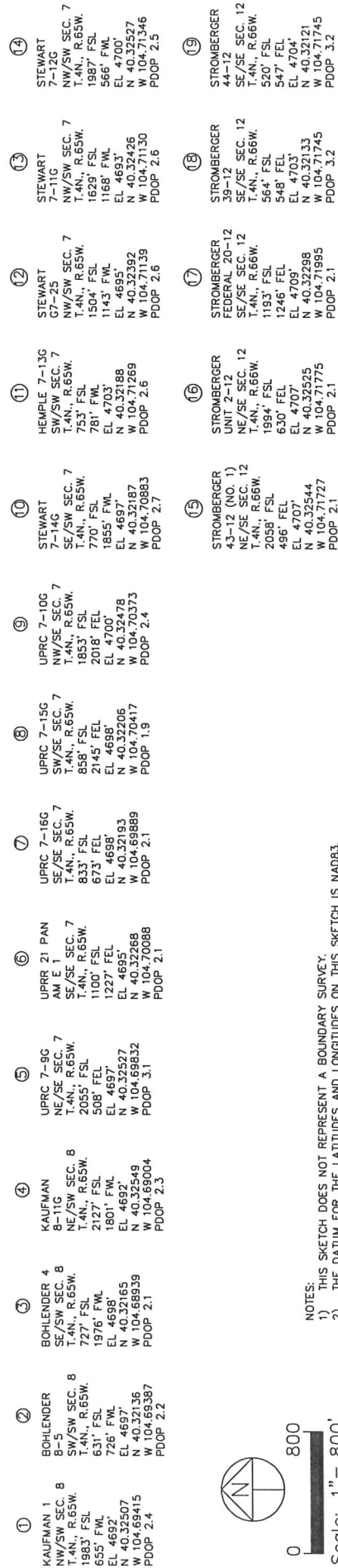
LEGEND

- (A) FOUND SURVEY MONUMENT PER MONUMENT RECORD - EXCEPTIONS NOTED.
- (C) CALCULATED DIMENSION

NOTICE: According to Colorado law you MUST commission a new survey within three years after you are advised an improvement is located. If no survey is commissioned more than ten years from this date the date of the certification shown herein.

LATITUDE & LONGITUDE (NAD 83 SURFACE HOLE):
LATITUDE: N 40.32507°
LONGITUDE: W 104.69431°
PDOP: 2.1
QUARTER-QUARTER: NW/4SW/4 SEC 8
NEAREST PROPERTY LINE: 157' SOUTHEAST

SECTIONS 7, 8 & 12
TOWNSHIP 4 NORTH
RANGE 65 WEST



NOTES:

- 1) THIS SKETCH DOES NOT REPRESENT A BOUNDARY SURVEY.
- 2) THE DATUM FOR THE LATITUDES AND LONGITUDES ON THIS SKETCH IS NAD83.



0. 800.

Scale: 1" = 800'