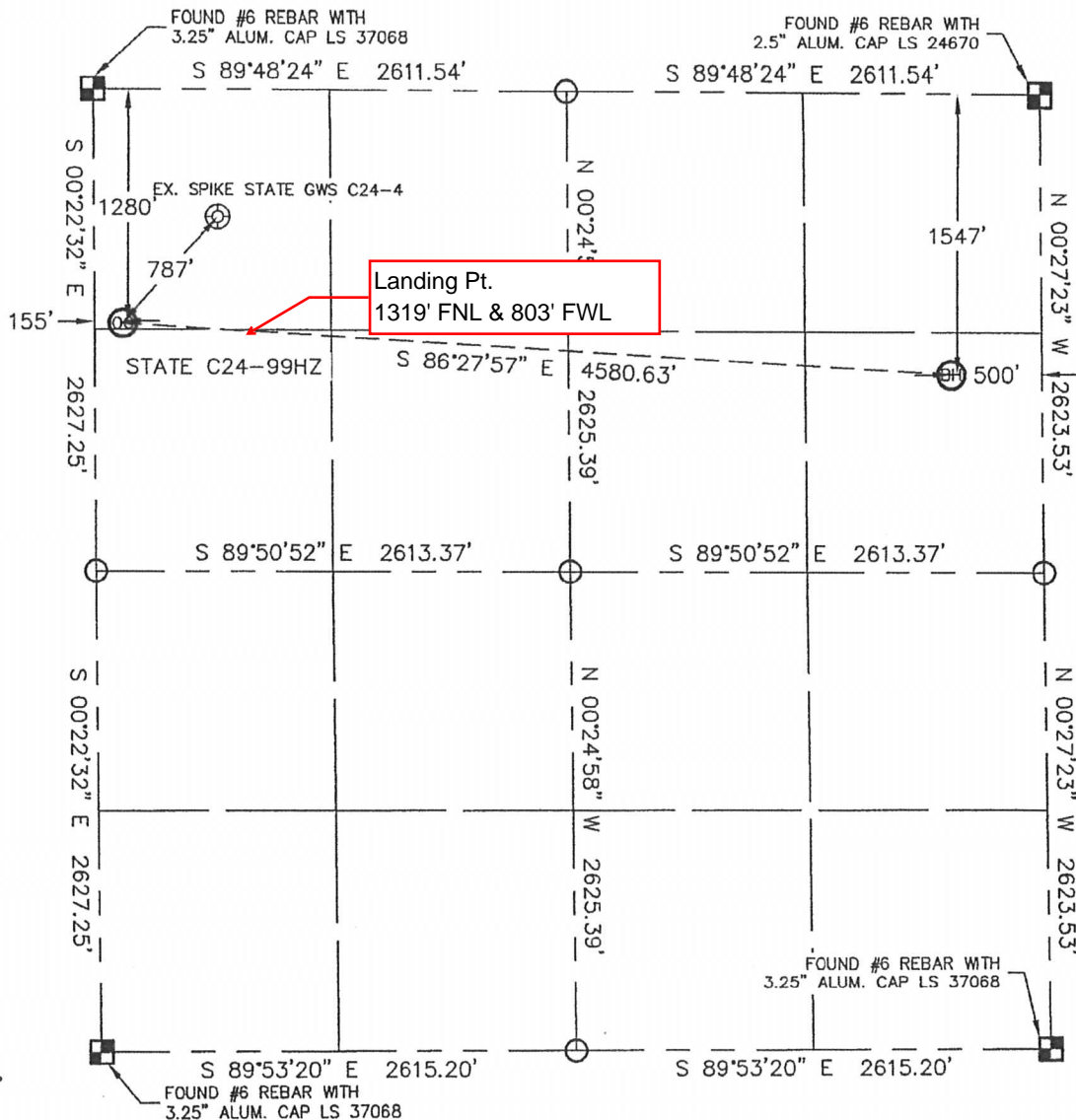


WELL LOCATION CERTIFICATE

THIS MAP DOES NOT REPRESENT A BOUNDARY SURVEY

SECTION: 24
TOWNSHIP: 4N
RANGE: 64W



In accordance with a request from Joe Johnson with Noble Energy Inc., Lat40°, LLC has determined the surface location of the STATE C24-99HZ to be 1280' from the NORTH line and 155' from the WEST line and the bottom hole to be 1547' from the NORTH line and 500' from the EAST line as measured at right angles from the section line of Section 24, Township 4 North, Range 64 West of the Sixth Principal Meridian, County of Weld, State of Colorado.

I hereby state that this Well Location Certificate was prepared by me, or under my direct supervision, that the fieldwork was completed on 9/8/10, for and on behalf of Noble Energy Inc. That this is not a Land Survey Plat or an Improvement Survey Plat, and that it is not to be relied upon for establishment of fence, building, or other future improvement lines.

NOTE:

- 1) Bearings shown are Grid Bearings of the Colorado State Plane Coordinate System, North Zone, North American Datum 1983/2007. The lineal dimensions as contained herein are based upon the "U.S. Survey Foot."
- 2) Ground elevations are based on an observed GPS elevation (NAVD 1988 DATUM).
- 3) NEAREST EXISTING WELL: SPIKE STATE GWS C24-4 787'
- 4) IMPROVEMENTS: See LOCATION DRAWING for all visible improvements within 400' of disturbed area.
- 5) SURFACE USE: RANGELAND
- 6) INSTRUMENT OPERATOR: KYLE RUTZ

NOTE

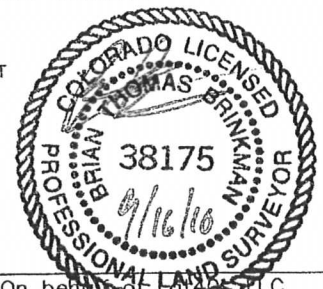
According to Colorado law, you must commence any legal action based upon any defect in this W.L.C. within three years after you discover such defect. In no event, may any action based upon any defect in this survey be commenced more than ten years after the date of the certificate shown hereon. (13-80-105 C.R.S.)

LEGEND

- = ALIQUOT MONUMENT AS DESCRIBED
- = CALCULATED POSITION

SURFACE LOCATION
LATITUDE: 40.30160°N
LONGITUDE: 104.50787°W
PDOP: 2.2
ELEV: 4664
1/4, 1/4: NW1/4NW1/4
NEAREST PROPERTY LINE: 155' WEST

BOTTOM HOLE
LATITUDE: 40.30068°N
LONGITUDE: 104.49149°W



Brian T. Brinkman—On behalf of Lat40°, LLC
Colorado Licensed Professional
Land Surveyor No. 38175

PROJECT#: 2010058

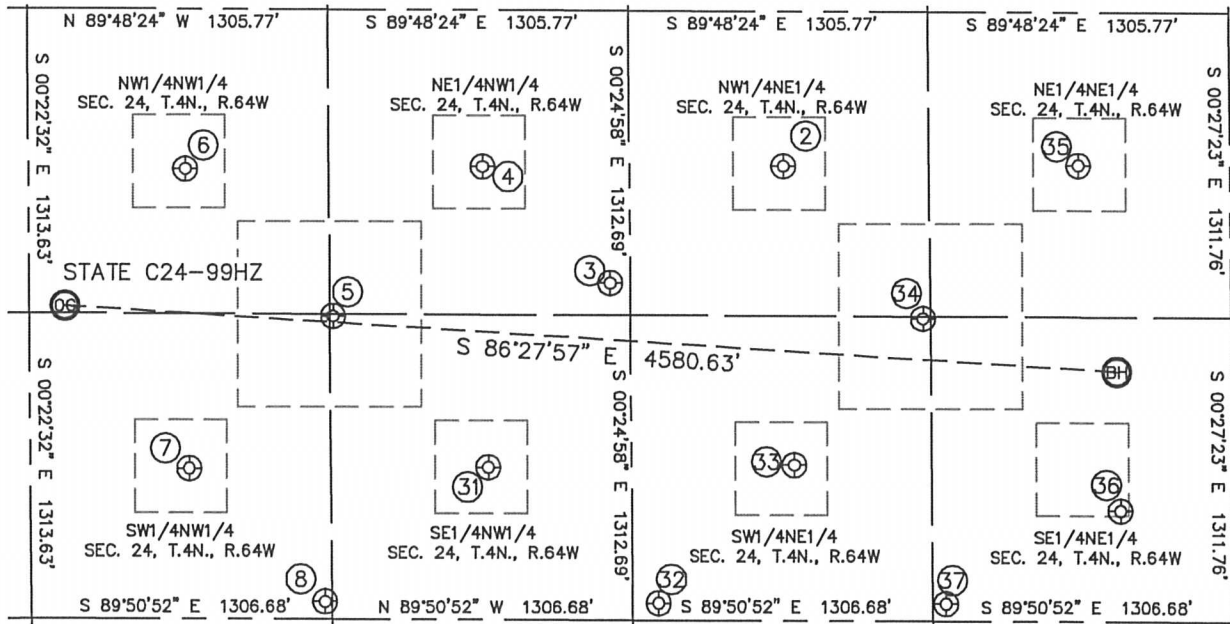
Lat40°, LLC

1635 Foxtrail Drive, Suite 325

Loveland, CO 80538

SITE SKETCH

STATE C24-99HZ

SECTION: 24
TOWNSHIP: 4N
RANGE: 64W

②

SPIKE STATE GWS C24-2
NW1/4NE1/4
667' FNL
1940' FEL
LAT-40.30316°N
LONG-104.49664°W
PDOP: 1.5
ELEV: 4687

③

ELISE STATE C24-18
NE1/4NW1/4
1174' FNL
2504' FWL
LAT-40.30180°N
LONG-104.49937°W
PDOP: 1.5
ELEV: 4677

④

SPIKE STATE GWS C24-3
NE1/4NW1/4
675' FNL
1975' FWL
LAT-40.30319°N
LONG-104.50134°W
PDOP: 1.3
ELEV: 4660

⑤

ELISE STATE C24-19
SE1/4NW1/4
1322' FNL
1320' FWL
LAT-40.30144°N
LONG-104.50369°W
PDOP: 1.4
ELEV: 4679

⑥

SPIKE STATE GWS C24-4
NW1/4NW1/4
690' FNL
681' FWL
LAT-40.30320°N
LONG-104.50597°W
PDOP: 1.3
ELEV: 4656

⑦

SPIKE STATE GWS C24-5
SW1/4NW1/4
1980' FNL
690' FWL
LAT-40.29966°N
LONG-104.50596°W
PDOP: 2.1
ELEV: 4693

⑧

ELISE STATE C24-20
SW1/4NW1/4
2551' FNL
1277' FWL
LAT-40.29807°N
LONG-104.50387°W
PDOP: 1.2
ELEV: 4697

③①

SPIKE STATE C24-6
SE1/4NW1/4
1970' FNL
1990' FWL
LAT-40.29963°N
LONG-104.50130°W
PDOP: 1.6
ELEV: 4682

③②

ELISE STATE C24-21
SW1/4NE1/4
2552' FNL
2500' FEL
LAT-40.29801°N
LONG-104.49867°W
PDOP: 1.3
ELEV: 4677

③③

SPIKE STATE GWS C24-7
SW1/4NE1/4
1954' FNL
1904' FEL
LAT-40.29963°N
LONG-104.49653°W
PDOP: 1.9
ELEV: 4673

③④

SPIKE STATE GWS C24-8J
SW1/4NE1/4
1322' FNL
1338' FEL
LAT-40.30134°N
LONG-104.49450°W
PDOP: 2.4
ELEV: 4678

③⑤

SPIKE STATE GWS C24-1
NE1/4NE1/4
659' FNL
658' FEL
LAT-40.30313°N
LONG-104.49205°W
PDOP: 2.3
ELEV: 4698

③⑥

ELISE STATE C24-8
SE1/4NE1/4
2146' FNL
489' FEL
LAT-40.29904°N
LONG-104.49146°W
PDOP: 2.0
ELEV: 4702

③⑦

ELISE STATE C24-22
SE1/4NE1/4
2549' FNL
1250' FEL
LAT-40.29796°N
LONG-104.49420°W
PDOP: 1.9
ELEV: 4709

