
BLACK HILLS EXPLORATION & PROD-EBUS

Ute 34-34

La Plata County , Colorado

Cement Surface Casing

Job Site Documents

The Road to Excellence Starts with Safety

Sold To #: 359739		Ship To #: 359739		Quote #:		Sales Order #: 7484762	
Customer: BLACK HILLS EXPLORATION & PROD-EBUS				Customer Rep: Parrent, Allen			
Well Name: Southern Ute			Well #: 34-34		API/UWI #:		
Field: IGNACIO / BLANCO		City (SAP): GOLDEN		County/Parish: La Plata		State: Colorado	
Contractor: AWS			Rig/Platform Name/Num: AWS 507				
Job Purpose: Cement Surface Casing							
Well Type: Development Well				Job Type: Cement Surface Casing			
Sales Person: MASON, KYLE			Srv Supervisor: DOBBS, GARY		MBU ID Emp #: 122012		
Job Personnel							
HES Emp Name	Exp Hrs	Emp #	HES Emp Name	Exp Hrs	Emp #	HES Emp Name	Exp Hrs
DEATON, PAUL David	4.5	436811	DOBBS, GARY D	4.5	122012	ONEAL, TALLEY	4.5
Equipment							
HES Unit #	Distance-1 way	HES Unit #	Distance-1 way	HES Unit #	Distance-1 way	HES Unit #	Distance-1 way
Job Hours							
Date	On Location Hours	Operating Hours	Date	On Location Hours	Operating Hours	Date	On Location Hours
7/7/10	4.5	2					
TOTAL			<i>Total is the sum of each column separately</i>				
Job				Job Times			
Formation Name				Date			
Formation Depth (MD) Top				Time			
Bottom				Time Zone			
Form Type				Called Out			
BHST				07 - Jul - 2010			
Job depth MD 450. ft				On Location			
Job Depth TVD				07 - Jul - 2010			
Water Depth				Job Started			
Wk Ht Above Floor				07 - Jul - 2010			
Perforation Depth (MD) From				Job Completed			
To				07 - Jul - 2010			
Departed Loc				07 - Jul - 2010			
Well Data							
Description	New / Used	Max pressure psig	Size in	ID in	Weight lbm/ft	Thread	Grade
12.25" Open Hole				12.25			
8.625" Surface Casing	Unknown		8.625	7.921	32.		
Tools and Accessories							
Type	Size	Qty	Make	Depth	Type	Size	Qty
Guide Shoe					Packer		
Float Shoe					Bridge Plug		
Float Collar					Retainer		
Insert Float							
Stage Tool							
Miscellaneous Materials							
Gelling Agt	Conc	Surfactant	Conc	Acid Type	Qty	Conc	%
Treatment Fld	Conc	Inhibitor	Conc	Sand Type	Size	Qty	
Fluid Data							
Stage/Plug #: 1							
Fluid #	Stage Type	Fluid Name	Qty	Qty uom	Mixing Density lbm/gal	Yield ft3/sk	Total Mix Fluid Gal/sk

Stage/Plug #: 1									
Fluid #	Stage Type	Fluid Name	Qty	Qty uom	Mixing Density lbm/gal	Yield ft ³ /sk	Mix Fluid Gal/sk	Rate bbl/min	Total Mix Fluid Gal/sk
1	H2O Spacer		10.00	bbl	8.33	.0	.0	.0	
2	Surface Cement	CMT - PREMIUM - CLASS G, 94 LB SK (100003685)	250	sacks	15.8	1.17	5.01		5.01
	94 lbm	CMT - PREMIUM - CLASS G REG OR TYPE V, BULK (100003685)							
	3 %	CALCIUM CHLORIDE - HI TEST PELLET (100005053)							
	0.125 lbm	POLY-E-FLAKE (101216940)							
	5.013 Gal	FRESH WATER							
3	H2O Displacement		26.6	bbl	8.33	.0	.0	.0	
Calculated Values		Pressures		Volumes					
Displacement	26.6	Shut In: Instant		Lost Returns		Cement Slurry	52	Pad	
Top Of Cement	0	5 Min		Cement Returns	10	Actual Displacement	26.6	Treatment	
Frac Gradient		15 Min		Spacers	10	Load and Breakdown		Total Job	
Rates									
Circulating	5	Mixing	4	Displacement	4	Avg. Job	4		
Cement Left In Pipe	Amount	44 ft	Reason	Shoe Joint					
Frac Ring # 1 @	ID	Frac ring # 2 @	ID	Frac Ring # 3 @	ID	Frac Ring # 4 @	ID		
The Information Stated Herein Is Correct				Customer Representative Signature					

The Road to Excellence Starts with Safety

Sold To #: 359739	Ship To #: 359739	Quote #:	Sales Order #: 7484762
Customer: BLACK HILLS EXPLORATION & PROD-EBUS		Customer Rep: Parrent, Allen	
Well Name: Southern Ute	Well #: 34-34	API/UWI #:	
Field: IGNACIO / BLANCO	City (SAP): GOLDEN	County/Parish: La Plata	State: Colorado
Legal Description:			
Lat:		Long:	
Contractor: AWS		Rig/Platform Name/Num: AWS 507	
Job Purpose: Cement Surface Casing			Ticket Amount:
Well Type: Development Well		Job Type: Cement Surface Casing	
Sales Person: MASON, KYLE		Srv Supervisor: DOBBS, GARY	MBU ID Emp #: 122012

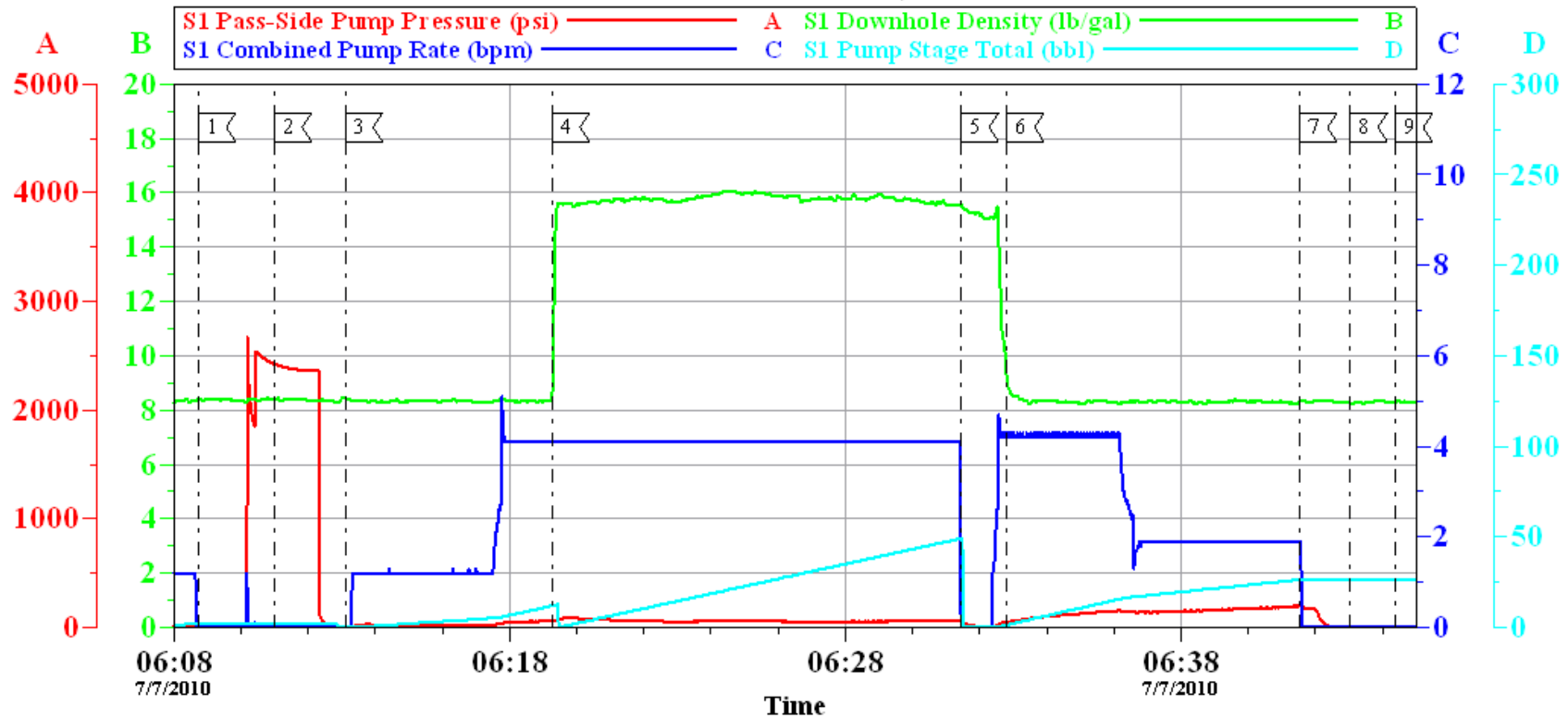
Activity Description	Date/Time	Cht #	Rate bbl/min	Volume bbl		Pressure psig		Comments
				Stage	Total	Tubing	Casing	
Pre-Convoy Safety Meeting	07/07/2010 01:30							
Arrive at Location from Service Center	07/07/2010 03:30							
Assessment Of Location Safety Meeting	07/07/2010 03:35							
Wait on Customer or Customer Sub-Contractor Equip	07/07/2010 03:45							
Wait on Customer or Customer Sub-Contractor Equipm	07/07/2010 05:00							
Pre-Rig Up Safety Meeting	07/07/2010 05:05							
Rig-Up Equipment	07/07/2010 05:10							RIG UP PUMP TRUCK, 1 BULK TRUCK & PICK UP
Pre-Job Safety Meeting	07/07/2010 05:45							
Start Job	07/07/2010 06:08							
Test Lines	07/07/2010 06:10					1500.0		
Pump Spacer 1	07/07/2010 06:13		2	20			11.0	WATER
Pump Tail Cement	07/07/2010 06:19		4	52			57.0	TYPE G CEMENT WITH 2% CACL2, 1/8# POLY-E-FLAKE MIXED @ 15.8#, 1.17 YEILD, 5.01 GPS FRESH WATER
Drop Top Plug	07/07/2010 06:31							
Pump Displacement	07/07/2010 06:32		4	16.6			50.0	WATER

Cementing Job Log

Activity Description	Date/Time	Cht #	Rate bbl/ min	Volume bbl		Pressure psig		Comments
				Stage	Total	Tubing	Casing	
Bump Plug	07/07/2010 06:41		2	10			200.0	
Check Floats	07/07/2010 06:43							FLOATS HELD
Cement Returns to Surface	07/07/2010 06:43							CIRCULATED 10 BBLS OF CEMENT TO PIT
End Job	07/07/2010 06:44							

BLACK HILLS

SOUTHERN UTE #34-34, SURFACE



Local Event Log					
Intersection		SPPP		Intersection	
1	START JOB	06:08:44	20.46	2	TEST LINES
3	PUMP SPACER 1	06:13:06	11.00	4	PUMP CEMENT
5	DROP PLUG	06:31:27	53.37	6	PUMP DISPLACEMENT
7	BUMP PLUG	06:41:32	200.4	8	CHECK FLOATS
9	END JOB	06:44:23	-6.000		

Customer: BLACK HILLS	Job Date: 07-Jul-2010	Sales Order #: 7484762
Well Description: SOUTHERN UTE #34-34	Job type: SURFACE	ADC Used: YES
Customer Rep: DARRELL BAXTER	Service Supervisor: DONNY DOBBS	Operator/ Pump: TALLEY ONEAL / 11324578

OptiCem v6.4.1
07-Jul-10 07:08