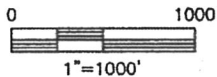
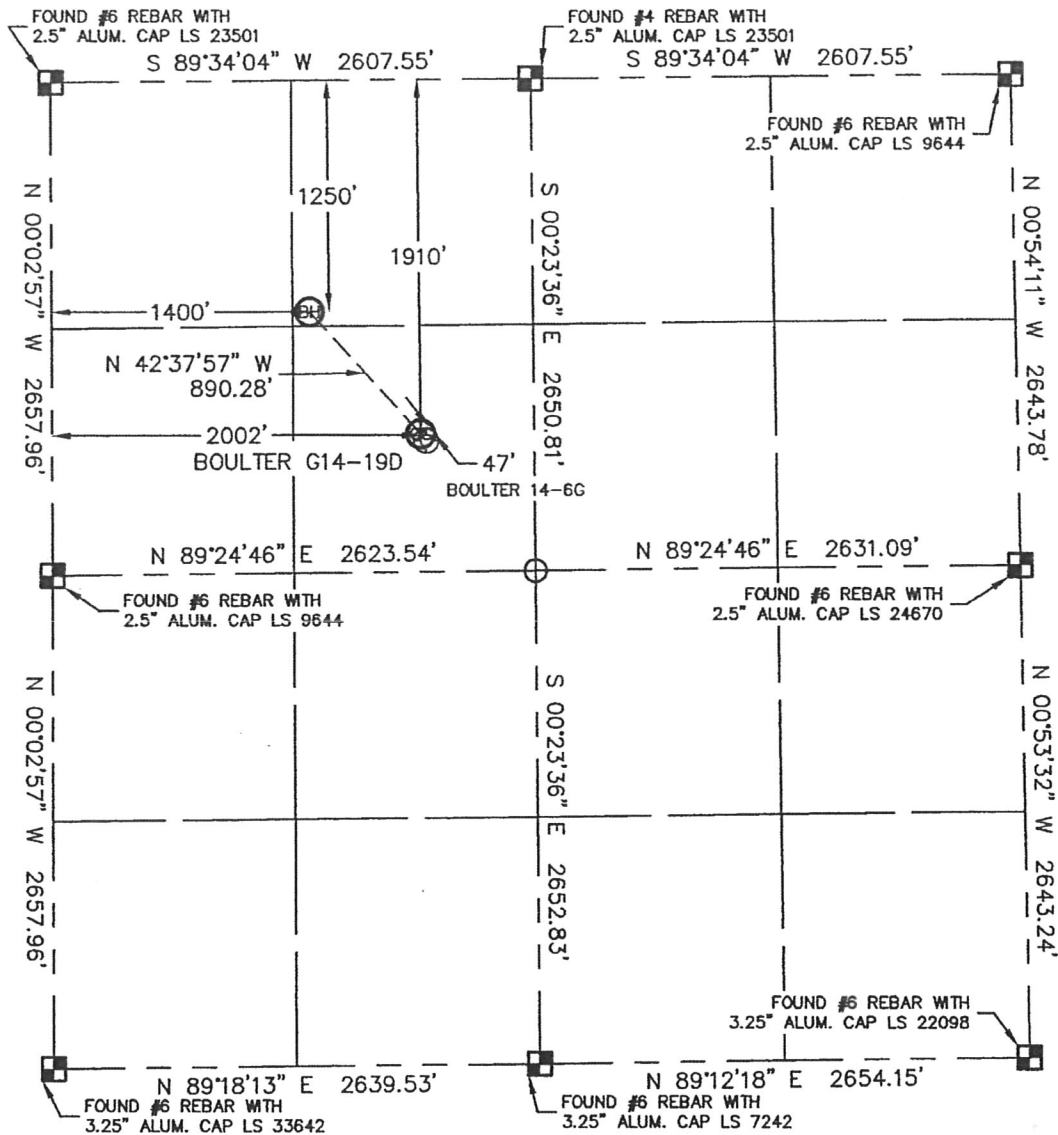


WELL LOCATION CERTIFICATE

THIS MAP DOES NOT REPRESENT A BOUNDARY SURVEY

SECTION: 14
TOWNSHIP: 4N
RANGE: 65W



In accordance with a request from Mike Rodine with Noble Energy Inc., Lat40°, LLC has determined the surface location of the BOULTER G14-19D to be 1910' from the NORTH line and 2002' from the WEST line and the bottom hole to be 1250' from the NORTH line and 1400' from the WEST line as measured at right angles from the section line of Section 14, Township 4 North, Range 65 West of the Sixth Principal Meridian, County of Weld, State of Colorado.

I hereby state that this Well Location Certificate was prepared by me, or under my direct supervision, that the fieldwork was completed on 8/23/10, for and on behalf of Noble Energy Inc.. That this is not a Land Survey Plat or an Improvement Survey Plat, and that it is not to be relied upon for establishment of fence, building, or other future improvement lines.



NOTE:

- 1) Bearings shown are Grid Bearings of the Colorado State Plane Coordinate System, North Zone, North American Datum 1983/2007. The lineal dimensions as contained herein are based upon the "U.S. Survey Foot."
- 2) Ground elevations are based on an observed GPS elevation (NAVD 1988 DATUM).
- 3) NEAREST EXISTING WELL: BOULTER 14-6G 47'
- 4) IMPROVEMENTS: See LOCATION DRAWING exhibit for all visible improvements within 400' of disturbed area.
- 5) SURFACE USE: RANGELAND, PIVOT CORNER, WELL SITE
- 6) INSTRUMENT OPERATOR: BRIAN BRINKMAN

NOTE

According to Colorado law, you must commence any legal action based upon any defect in this W.L.C. within three years after you discover such defect. In no event, may any action based upon any defect in this survey be commenced more than ten years after the date of the certificate shown hereon. (13-80-105 C.R.S.)

LEGEND

-  = ALIQUOT MONUMENT AS DESCRIBED
-  = CALCULATED POSITION

SURFACE LOCATION

LATITUDE: 40.31451N
LONGITUDE: 104.63246W
PDOP: 1.2
ELEV: 4694
1/4, 1/4: SE1/4NW1/4
NEAREST PROPERTY LINE: 617' WEST

BOTTOM HOLE

LATITUDE: 40.31632N
LONGITUDE: 104.63460W

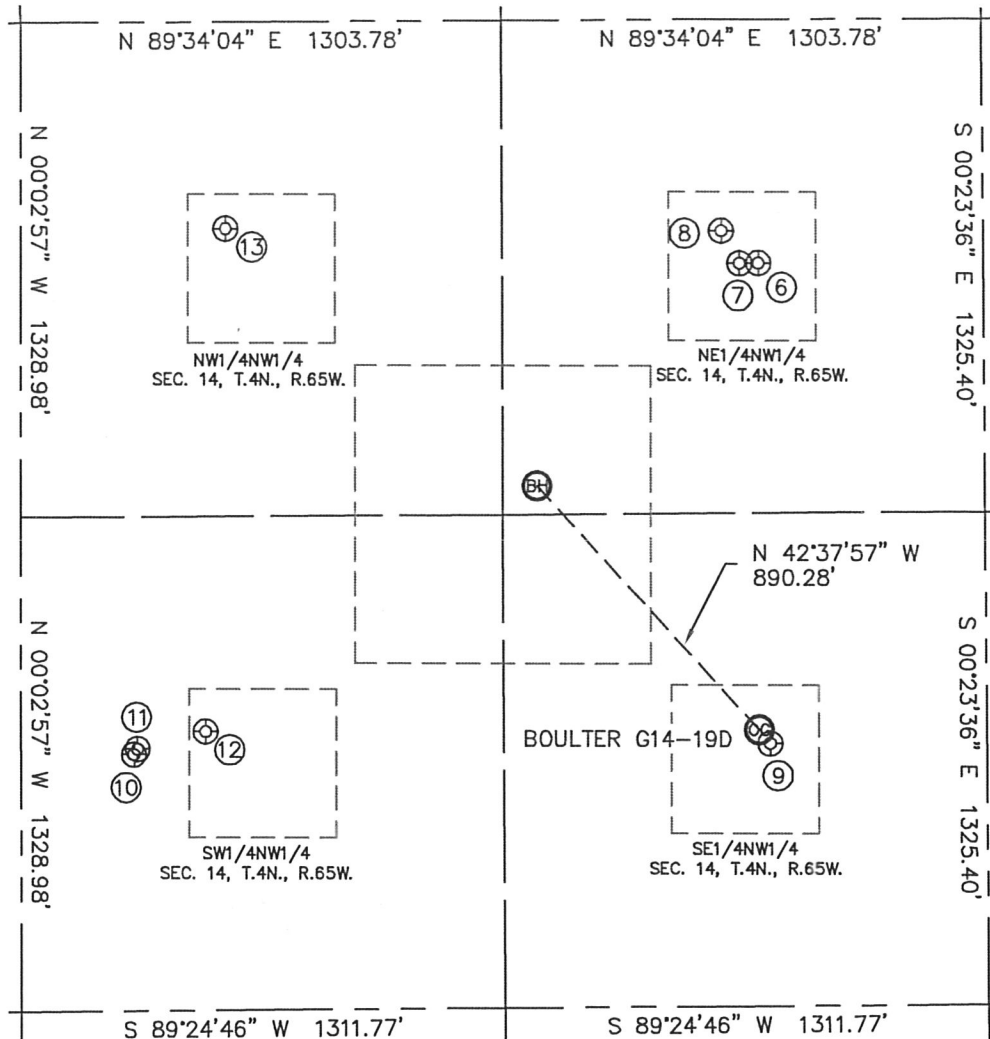


Brian T. Brinkman—On behalf of Lat40°
Colorado Licensed Professional
Land Surveyor No. 38175
Professional No. 2010085

SITE SKETCH

BOULTER G14-19D

SECTION: 14
TOWNSHIP: 4N
RANGE: 65W



⑥

WORRIES 21-14 DIR
NE1/4NW1/4
655' FNL
2002' FWL
LAT-40.31795°N
LONG-104.63243°W
PDOP: 1.6
ELEV: 4693

⑦

VICTOR G14-3
NE1/4NW1/4
655' FNL
1951' FWL
LAT-40.31795°N
LONG-104.63261°W
PDOP: 1.7
ELEV: 4693

⑧

BOULTER 14-3G
NE1/4NW1/4
568' FNL
1901' FWL
LAT-40.31819°N
LONG-104.63278°W
PDOP: 1.2
ELEV: 4694

⑨

BOULTER 14-6G
SE1/4NW1/4
1946' FNL
2032' FWL
LAT-40.31441°N
LONG-104.63236°W
PDOP: 1.3
ELEV: 4694

⑩

WORRIES 32-14 DIR
SW1/4NW1/4
1967' FNL
307' FWL
LAT-40.31436°N
LONG-104.63855°W
PDOP: 1.5
ELEV: 4694

⑪

WORRIES 41-15 DIR
SW1/4NW1/4
1952' FNL
317' FWL
LAT-40.31440°N
LONG-104.63851°W
PDOP: 1.5
ELEV: 4694

⑫

BOULTER FRANK A #1
SW1/4NW1/4
1906' FNL
500' FWL
LAT-40.31453°N
LONG-104.63785°W
PDOP: 2.4
ELEV: 4693

⑬

BOULTER 14-4G
NW1/4NW1/4
556' FNL
555' FWL
LAT-40.31823°N
LONG-104.63761°W
PDOP: 1.2
ELEV: 4684

