
ANTERO RESOURCES

**CSF 34D-10-07-91
WILDCAT
Garfield County , Colorado**

**Cement Surface Casing
14-Sep-2010**

Post Job Report

The Road to Excellence Starts with Safety

Sold To #: 337854	Ship To #: 2806774	Quote #:	Sales Order #: 7635945
Customer: ANTERO RESOURCES		Customer Rep: Honeycutt, Matt	
Well Name: CSF	Well #: 34D-10-07-91	API/UWI #: 05-045-19723	
Field: WILDCAT	City (SAP): SILT	County/Parish: Garfield	State: Colorado
Lat: N 39.456 deg. OR N 39 deg. 27 min. 22.637 secs.		Long: W 107.536 deg. OR W -108 deg. 27 min. 50.303 secs.	
Contractor: FRONTIER 12		Rig/Platform Name/Num: FRONTIER 12	
Job Purpose: Cement Surface Casing			
Well Type: Development Well		Job Type: Cement Surface Casing	
Sales Person: METLI, MARSHALL		Srvc Supervisor: PHILLIPS, MARK	MBU ID Emp #: 445272

Job Personnel

HES Emp Name	Exp Hrs	Emp #	HES Emp Name	Exp Hrs	Emp #	HES Emp Name	Exp Hrs	Emp #
BLUST, CHARLES Thomas	6	386662	HUGENTOBLER, LOGAN Mark	6	447333	Lopez, Gerald	6	479828
PHILLIPS, MARK Bejar	6	445272						

Equipment

HES Unit #	Distance-1 way	HES Unit #	Distance-1 way	HES Unit #	Distance-1 way	HES Unit #	Distance-1 way
10867425	120 mile	10897891	120 mile	10951250	120 mile	11360871	120 mile
11542767	120 mile						

Job Hours

Date	On Location Hours	Operating Hours	Date	On Location Hours	Operating Hours	Date	On Location Hours	Operating Hours
09-14-2010	6	1						

TOTAL Total is the sum of each column separately

Job

Job Times

Formation Name	Top	Bottom	Called Out	Date	Time	Time Zone
Formation Depth (MD)			On Location	14 - Sep - 2010	15:30	CST
Form Type		BHST	Job Started	14 - Sep - 2010	19:13	CST
Job depth MD	1106. ft	Job Depth TVD	1106. ft	Job Completed	14 - Sep - 2010	20:36
Water Depth		Wk Ht Above Floor	. ft	Departed Loc	14 - Sep - 2010	21:30
Perforation Depth (MD)	From	To				

Well Data

Description	New / Used	Max pressure psig	Size in	ID in	Weight lbm/ft	Thread	Grade	Top MD ft	Bottom MD ft	Top TVD ft	Bottom TVD ft
-------------	------------	-------------------	---------	-------	---------------	--------	-------	-----------	--------------	------------	---------------

Sales/Rental/3rd Party (HES)

Description	Qty	Qty uom	Depth	Supplier
R/A DENSOMETER W/CHART RECORDER,/JOB,ZI	1	JOB		
PORT. DAS W/CEMWIN;ACQUIRE W/HES, ZI	1	JOB		
ADC (AUTO DENSITY CTRL) SYS, /JOB,ZI	1	JOB		
PLUG,CMTG,TOP,8 5/8,HWE,7.20 MIN/8.09 MA	1	EA		

Tools and Accessories

Type	Size	Qty	Make	Depth	Type	Size	Qty	Make	Depth	Type	Size	Qty	Make
Guide Shoe					Packer					Top Plug	8.625	1	HES
Float Shoe					Bridge Plug					Bottom Plug			
Float Collar					Retainer					SSR plug set			
Insert Float										Plug Container			
Stage Tool										Centralizers			

Miscellaneous Materials

Gelling Agt	Conc	Surfactant	Conc	Acid Type	Qty	Conc %
Treatment Fld	Conc	Inhibitor	Conc	Sand Type	Size	Qty

Fluid Data										
Stage/Plug #: 1										
Fluid #	Stage Type	Fluid Name	Qty	Qty uom	Mixing Density lbm/gal	Yield ft ³ /sk	Mix Fluid Gal/sk	Rate bbl/min	Total Mix Fluid Gal/sk	
1	Water Spacer		20.00	bbl	.	.0	.0	2.0		
2	Lead Cement	VERSACEM (TM) SYSTEM (452010)	130.0	sacks	12.3	2.38	13.75	5.0	13.75	
		13.75 Gal FRESH WATER								
3	Tail Cement	SWIFTCEM (TM) SYSTEM (452990)	185.0	sacks	14.2	1.43	6.85	5.0	6.85	
		6.85 Gal FRESH WATER								
4	Displacement			bbl	.	.0	.0	5.0		
Calculated Values		Pressures			Volumes					
Displacement	64.6	Shut In: Instant		Lost Returns	0	Cement Slurry	101.5	Pad		
Top Of Cement	SURFACE	5 Min		Cement Returns	6	Actual Displacement	64.6	Treatment		
Frac Gradient		15 Min		Spacers	10	Load and Breakdown		Total Job	177	
Rates										
Circulating	0	Mixing	5	Displacement	5	Avg. Job	5			
Cement Left In Pipe	Amount	45.52 ft	Reason	Shoe Joint						
Frac Ring # 1 @	ID	Frac ring # 2 @	ID	Frac Ring # 3 @	ID	Frac Ring # 4 @	ID			
The Information Stated Herein Is Correct				Customer Representative Signature						

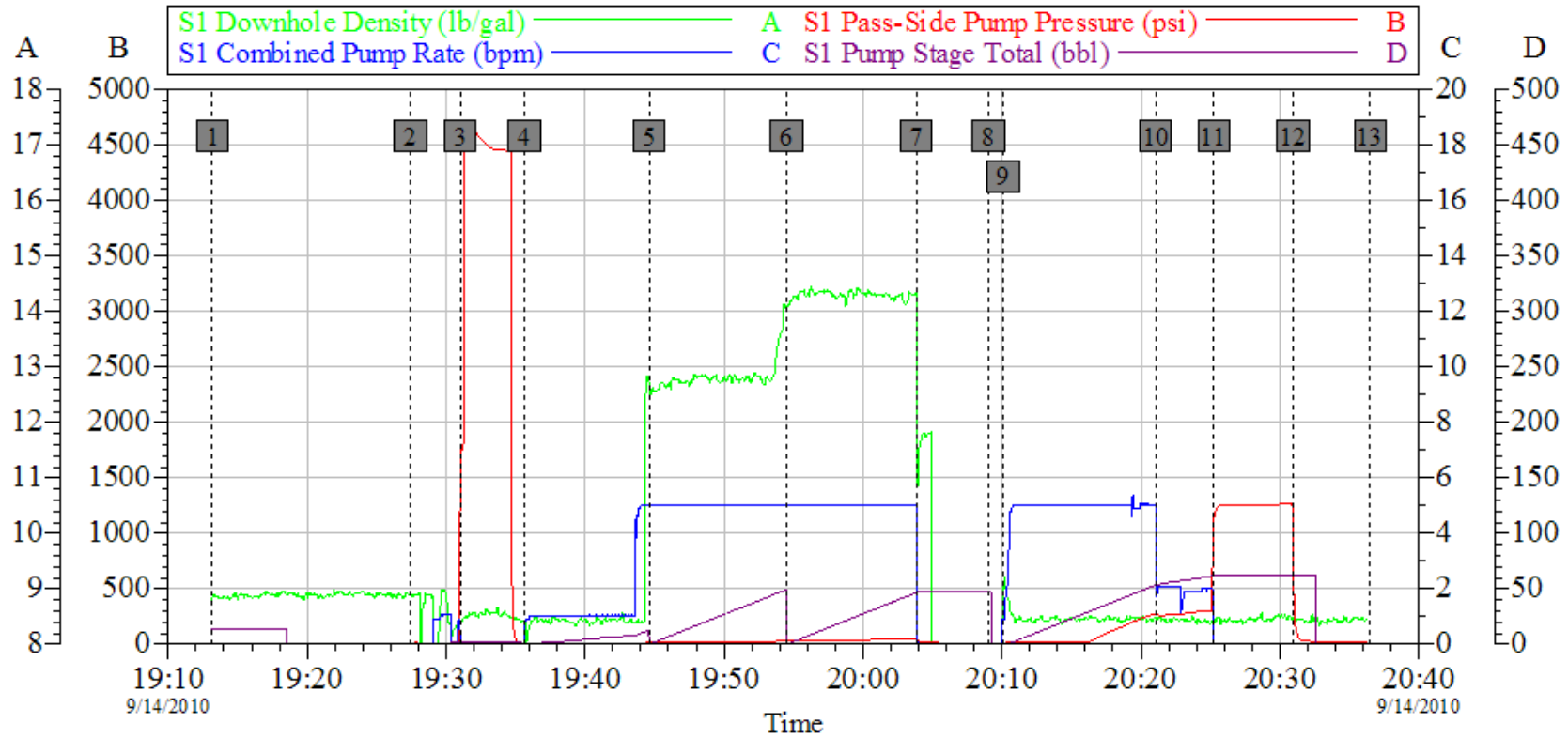
The Road to Excellence Starts with Safety

Sold To #: 337854	Ship To #: 2806774	Quote #:	Sales Order #: 7635945
Customer: ANTERO RESOURCES		Customer Rep: Honeycutt, Matt	
Well Name: CSF		Well #: 34D-10-07-91	API/UWI #: 05-045-19723
Field: WILDCAT	City (SAP): SILT	County/Parish: Garfield	State: Colorado
Legal Description:			
Lat: N 39.456 deg. OR N 39 deg. 27 min. 22.637 secs.		Long: W 107.536 deg. OR W -108 deg. 27 min. 50.303 secs.	
Contractor: FRONTIER 12		Rig/Platform Name/Num: FRONTIER 12	
Job Purpose: Cement Surface Casing			Ticket Amount:
Well Type: Development Well		Job Type: Cement Surface Casing	
Sales Person: METLI, MARSHALL		Srvc Supervisor: PHILLIPS, MARK	MBU ID Emp #: 445272

Activity Description	Date/Time	Cht #	Rate bbl/min	Volume bbl		Pressure psig		Comments
				Stage	Total	Tubing	Casing	
Call Out	09/14/2010 10:00							
Pre-Convoy Safety Meeting	09/14/2010 12:30							ALL HES EMPLOYEES
Arrive At Loc	09/14/2010 15:30							RIG STILL RUNNING CASING
Assessment Of Location Safety Meeting	09/14/2010 15:45							ALL HES EMPLOYEES
Rig-Up Equipment	09/14/2010 18:00							1 HT-400 PUMP TRUCK, 1 660 BULK TRUCK, 1 F-450 P/U, 1 8.625 SWAGE
Pre-Job Safety Meeting	09/14/2010 19:00							ALL HES EMPLOYEES, RIG CREW, CO REP AND ANY 3RD PARTY VENDORS
Start Job	09/14/2010 19:13							SP 1106 FT, TD 1110 FT, FC 1060.48 FT, HOLE 12.25", RATE WILL BE 5-5-2, WILL BUMP 500 PSI OVER LAND PSI, RIG DRILLED WITH AIR.
Pump Water	09/14/2010 19:14		2	2				FILL LINES PRIOR TO PRESSURE TESTING LINES
Pressure Test	09/14/2010 19:31		0.5				4600.0	NO LEAKS, KICK OUTS SET TO 3000 PSI FOR TEST.
Pump Spacer 1	09/14/2010 19:35		2	10				FRESH WATER

Activity Description	Date/Time	Cht #	Rate bbl/min	Volume bbl		Pressure psig		Comments
				Stage	Total	Tubing	Casing	
Pump Lead Cement	09/14/2010 19:44		5	55.1			30.0	130 SKS VERSACEM CMT TO BE MIXED AT 12.8 PPG, 2.38 YIELD, 13.77 GAL/SK, CMT TO BE WEIGHED VIA PRESSURE BALANCED MUD SCALES WET AND DRY SAMPLES SUBMITTED.
Pump Tail Cement	09/14/2010 19:54		5	47.1			50.0	185 SKS SWIFTCEM CMT TO BE MUIXED AT 14.2 PPG, 1.43 YIELD, 6.85 GAL/SK, CMT TO BE WEIGHED VIA PRESSURE BALANCED MUD SCALES, WET AND DRY SAMPLES SUBMITTED,
Shutdown	09/14/2010 20:03							
Drop Plug	09/14/2010 20:09							PLUG LAUNCHED
Slow Rate	09/14/2010 20:21		2	54			341.0	10 BBLS PRIOR TO CALCULATED DISPLACEMENT
Cement Returns to Surface	09/14/2010 20:23		2	58			340.0	6 BBLS OF CMT RETURNED TO SURFACE
Bump Plug	09/14/2010 20:25		2	64.6			1102.0	PLUG LANDED
Check Floats	09/14/2010 20:30							FLOATS HOLDING
End Job	09/14/2010 20:36							THANK YOU FOR USING HES FROM MARK PHILLIPS AND CREW
Post-Job Safety Meeting (Pre Rig-Down)	09/14/2010 21:00							ALL HES EMPLOYEES
Pump Displacement	09/14/2010 21:10		5	64.6			55.0	FRESH WATER
Rig-Down Equipment	09/14/2010 21:15							
Pre-Convoy Safety Meeting	09/14/2010 21:30							ALL HES EMPLOYEES
Crew Leave Location	09/14/2010 22:00							LOCATION CLEAN

ANTERO RESOURCES CSF 34D-07-91 SURFACE



Global Event Log

1	Starting Job	19:13:11	2	Start Job	19:27:25	3	Pressure Test	19:31:02
4	Pump Spacer 1	19:35:37	5	Pump Lead Cement	19:44:36	6	Pump Tail Cement	19:54:30
7	Shutdown	20:03:52	8	Drop Top Plug	20:09:03	9	Pump Displacement	20:10:05
10	Slow Rate	20:21:05	11	Bump Plug	20:25:16	12	Check Floats	20:30:57
13	Ending Job	20:36:29						

Customer: ANTERO
Well Description: CSF 34D-07-91
Company Rep: MATT CUNNINGHAM

Job Date: 14-Sep-2010
Job Type: SURFACE
Cement Supervisor: MARK PHILLIPS

Sales Order #: 7635945
ADC Used: YES
Elite #1: LOGAN HUGENTOBLER

OptiCem v6.4.5
14-Sep-10 20:44