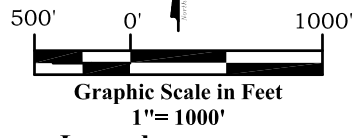
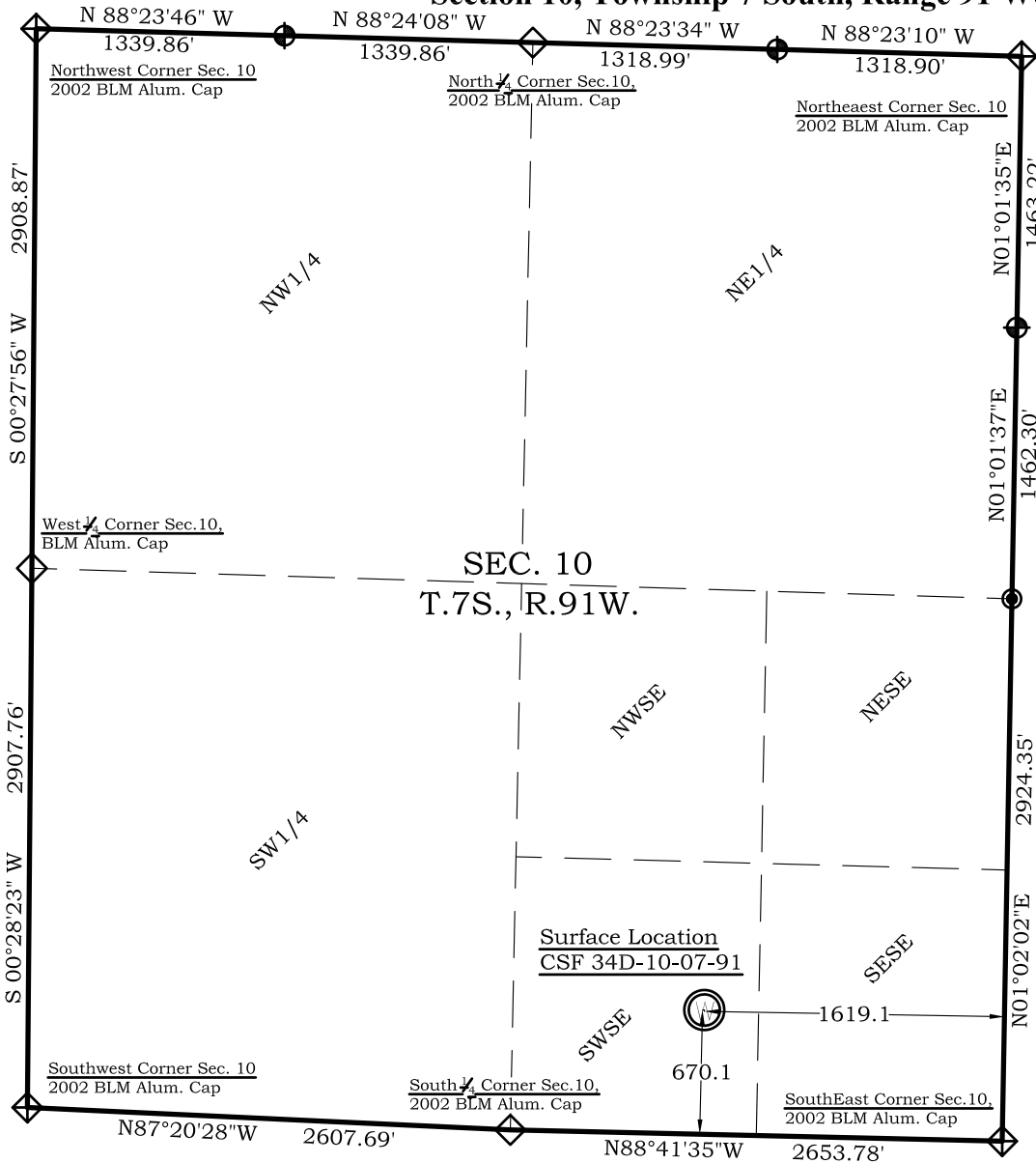


As Drilled Well Location Plat

CSF 34D-10-07-91

Section 10, Township 7 South, Range 91 West



Legend

- Field Surveyed Section Corner
- Field Surveyed Quarter Corner
- Calculated Section Corner Location
- Field Surveyed 1/16 Corner

CSF 34D-10-07-91
As Drilled Surface Location

670' FSL
1619' FEL
Gnd El= 7282.5
NAD83
Lat: 339.456288580°N
Long: 107.536026762°W

NAD27
Lat: 39.456307862°N
Long: 107.535416570°W
UTM 13 NORTH
NAD 1983
Northing
14338827.023
Easting
924553.765

Prepared For Antero Resources
As Drilled CSF 34D-10-07-91 Well Situate in The SW 1/4 SE 1/4
Section 10, Township 7 South, Range 91 West of the 6 th.
Principal Meridian, County of Garfield, State of Colorado

SURVEYOR'S CERTIFICATE

I, SCOTT E. AIBNER, A REGISTERED LAND SURVEYOR, LICENSED UNDER THE LAWS OF THE STATE OF COLORADO DO HEREBY CERTIFY THAT THE SURVEY SHOWN HEREON WAS PREPARED BY RIVER VALLEY SURVEY, INC., FOR ANTERO RESOURCES, BY ME OR UNDER MY DIRECT SUPERVISION AND HAS BEEN STAKED ON THE GROUND AS SHOWN ON THE PLAT AND THAT THIS PLAT IS A TRUE REPRESENTATION THEREOF.

BY: _____
SCOTT E. AIBNER, COLORADO REG. NO. 31143

Notes:

1. LATITUDE AND LONGITUDE COORDINATES ARE DIFFERENTIALLY CORRECTED AND BASED ON PUBLISHED NGS CONTROL STATION "WDP-5". SYSTEM: UTM ZONE: 13 NORTH DATUM: NAD 1983 (CONUS)
2. ELEVATIONS ARE BASED ON NAVD OF 1983.
3. ALL BOTTOM AND TOP HOLE LOCATIONS ARE MEASURED 90 DEGREES FROM SECTION LINE.
4. USGS QUADRANGLE MAP "GIBSON GULCH".
5. CURRENT SURFACE LAND USE: OPEN RANGE LAND.
6. PDOP AT THE TIME OF LOCATION OF SURFACE WELL = 2.5



River Valley Survey, Inc.
110 East 3rd. Street, Suite 213
Rifle, Colorado 81650
Ph: 970-379-7846

Project: CASTLE SPRINGS FEDERAL Q PAD	
Field Date: 11-03-10	Scale: 1"= 1000'
Date: 11-22-10	Sheet: 1 of 1

A Drilled Well Location Plat
Prepared For Antero Resources

Situate In:
SE 1/4 Section 10, T7S., R. 91 W. of the
6th P.M., Garfield County, Colorado

