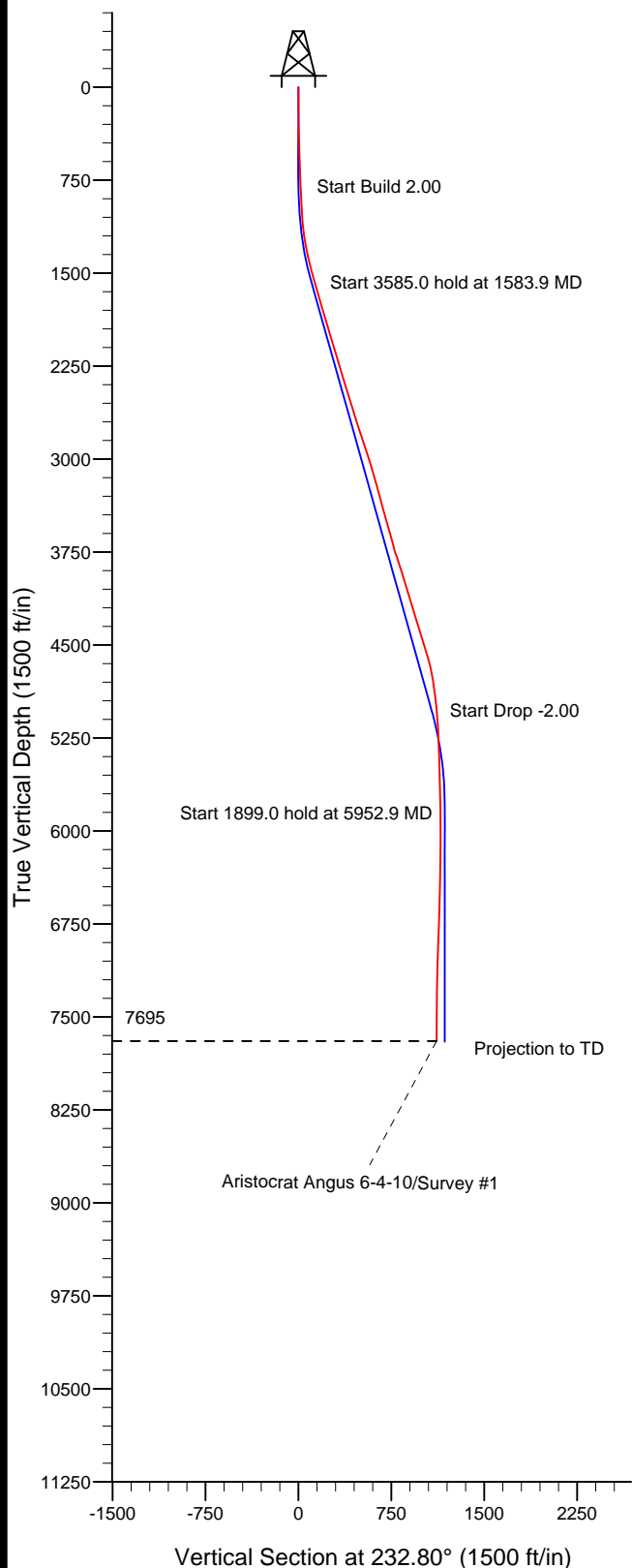
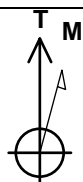


Well Name: **Aristocrat Angus 6-4-10**  
 Surface Location: Aristocrat Angus 6-4-10 Pad Sec.10-T3N-R65W  
 North American Datum 1983 , US State Plane 1983 , Colorado Northern Zone  
 Ground Elevation: 4774.0  
 +N/-S +E/-W Northing Easting Latitude Longitude Slot  
 0.0 0.0 1332189.38 3239796.76 40° 14' 31.452 N 104° 38' 27.564 W  
 Original Well Elev WELL @ 4789.0ft (Original Well Elev)

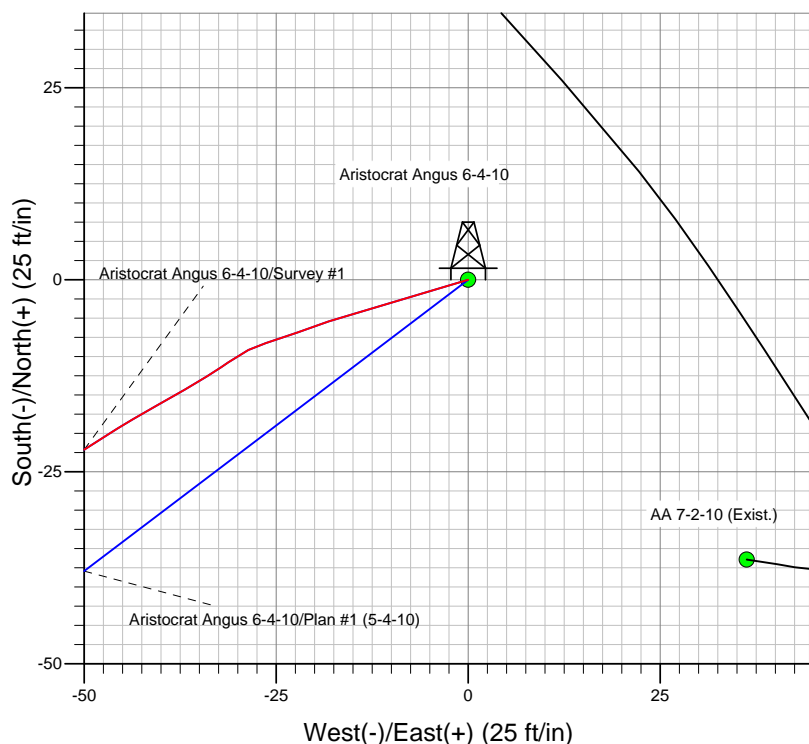
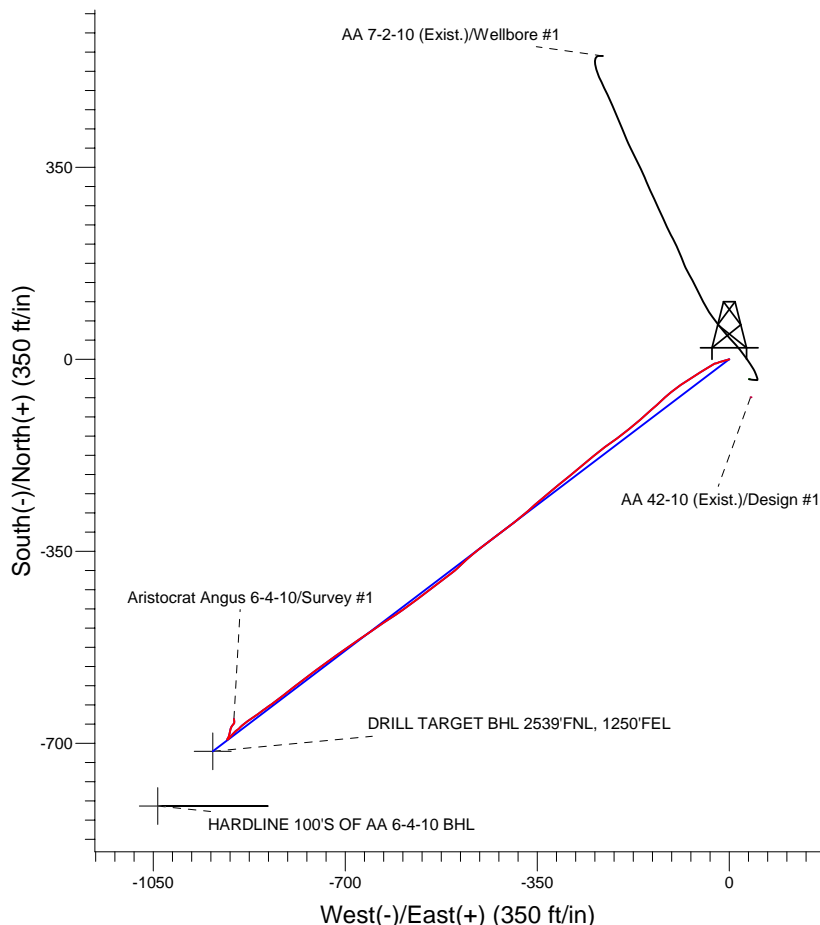


Aristocrat Angus 6-4-10  
 Wellbore #1  
 8:20, June 01 2010



Azimuths to True North  
 Magnetic North: 8.93°  
 Magnetic Field  
 Strength: 53180.0snT  
 Dip Angle: 66.98°  
 Date: 5/4/2010  
 Model: IGRF2010

## EnCana Oil & Gas Weld County CO





# **EnCana Oil & Gas Weld County CO**

**SEC.10-T3N-R65W**

**Aristocrat Angus 6-4-10 Pad Sec.10-T3N-R65W**

**Aristocrat Angus 6-4-10**

**Wellbore #1**

**Survey: Survey #1**

## **Standard Survey Report**

**01 June, 2010**

<b>Company:</b>	EnCana Oil & Gas Weld County CO	<b>Local Co-ordinate Reference:</b>	Well Aristocrat Angus 6-4-10
<b>Project:</b>	SEC.10-T3N-R65W	<b>TVD Reference:</b>	WELL @ 4789.0ft (Original Well Elev)
<b>Site:</b>	Aristocrat Angus 6-4-10 Pad Sec.10-T3N-R65W	<b>MD Reference:</b>	WELL @ 4789.0ft (Original Well Elev)
<b>Well:</b>	Aristocrat Angus 6-4-10	<b>North Reference:</b>	True
<b>Wellbore:</b>	Wellbore #1	<b>Survey Calculation Method:</b>	Minimum Curvature
<b>Design:</b>	Wellbore #1	<b>Database:</b>	Landmark

<b>Project</b>	SEC.10-T3N-R65W, Weld County, Colorado		
<b>Map System:</b>	US State Plane 1983	<b>System Datum:</b>	Mean Sea Level
<b>Geo Datum:</b>	North American Datum 1983		
<b>Map Zone:</b>	Colorado Northern Zone		Using geodetic scale factor

<b>Site</b>	Aristocrat Angus 6-4-10 Pad Sec.10-T3N-R65W		
<b>Site Position:</b>		<b>Northing:</b>	1,332,192.98 ft
<b>From:</b>	Lat/Long	<b>Easting:</b>	3,239,791.14 ft
<b>Position Uncertainty:</b>	0.0 ft	<b>Slot Radius:</b>	"
		<b>Latitude:</b>	40° 14' 31.488 N
		<b>Longitude:</b>	104° 38' 27.636 W
		<b>Grid Convergence:</b>	0.56 °

<b>Well</b>	Aristocrat Angus 6-4-10		
<b>Well Position</b>	<b>+N/-S</b>	0.0 ft	<b>Northing:</b>
	<b>+E/-W</b>	0.0 ft	<b>Easting:</b>
<b>Position Uncertainty</b>	0.0 ft	<b>Wellhead Elevation:</b>	ft
		<b>Latitude:</b>	40° 14' 31.452 N
		<b>Longitude:</b>	104° 38' 27.564 W
		<b>Ground Level:</b>	4,774.0 ft

<b>Wellbore</b>	Wellbore #1		
<b>Magnetics</b>	<b>Model Name</b>	<b>Sample Date</b>	<b>Declination (°)</b>
	IGRF2010	5/4/2010	8.93
			<b>Dip Angle (°)</b>
			66.98
			<b>Field Strength (nT)</b>
			53,180

<b>Design</b>	Wellbore #1		
<b>Audit Notes:</b>			
<b>Version:</b>	1.0	<b>Phase:</b>	ACTUAL
		<b>Tie On Depth:</b>	0.0
<b>Vertical Section:</b>	<b>Depth From (TVD) (ft)</b>	<b>+N/-S (ft)</b>	<b>+E/-W (ft)</b>
	0.0	0.0	0.0
			<b>Direction (°)</b>
			232.80

<b>Survey Program</b>	<b>Date</b>	6/1/2010		
<b>From (ft)</b>	<b>To (ft)</b>	<b>Survey (Wellbore)</b>	<b>Tool Name</b>	<b>Description</b>
775.0	7,850.0	Survey #1 (Wellbore #1)	MWD	MWD - Standard

<b>Survey</b>									
<b>Measured Depth (ft)</b>	<b>Inclination (°)</b>	<b>Azimuth (°)</b>	<b>Vertical Depth (ft)</b>	<b>+N/-S (ft)</b>	<b>+E/-W (ft)</b>	<b>Vertical Section (ft)</b>	<b>Dogleg Rate (°/100ft)</b>	<b>Build Rate (°/100ft)</b>	<b>Turn Rate (°/100ft)</b>
0.0	0.00	0.00	0.0	0.0	0.0	0.0	0.00	0.00	0.00
775.0	2.80	253.40	774.7	-5.4	-18.1	17.7	0.36	0.36	0.00
869.0	2.60	247.60	868.6	-6.9	-22.3	21.9	0.36	-0.21	-6.17
963.0	2.60	255.40	962.5	-8.2	-26.3	26.0	0.38	0.00	8.30
1,058.0	4.10	234.70	1,057.3	-10.7	-31.2	31.3	2.00	1.58	-21.79
1,152.0	7.10	240.80	1,150.9	-15.5	-39.0	40.5	3.25	3.19	6.49
1,247.0	9.60	237.60	1,244.9	-22.6	-50.8	54.2	2.68	2.63	-3.37
1,342.0	11.60	236.60	1,338.2	-32.1	-65.5	71.6	2.11	2.11	-1.05
1,437.0	14.20	238.00	1,430.8	-43.6	-83.4	92.7	2.76	2.74	1.47
1,531.0	15.80	230.90	1,521.6	-57.7	-103.1	117.0	2.59	1.70	-7.55
1,626.0	15.70	226.70	1,613.1	-74.7	-122.5	142.7	1.20	-0.11	-4.42
1,720.0	16.80	227.90	1,703.3	-92.5	-141.8	168.9	1.22	1.17	1.28
1,815.0	16.90	229.80	1,794.2	-110.7	-162.5	196.4	0.59	0.11	2.00

<b>Company:</b>	EnCana Oil & Gas Weld County CO	<b>Local Co-ordinate Reference:</b>	Well Aristocrat Angus 6-4-10
<b>Project:</b>	SEC.10-T3N-R65W	<b>TVD Reference:</b>	WELL @ 4789.0ft (Original Well Elev)
<b>Site:</b>	Aristocrat Angus 6-4-10 Pad Sec.10-T3N-R65W	<b>MD Reference:</b>	WELL @ 4789.0ft (Original Well Elev)
<b>Well:</b>	Aristocrat Angus 6-4-10	<b>North Reference:</b>	True
<b>Wellbore:</b>	Wellbore #1	<b>Survey Calculation Method:</b>	Minimum Curvature
<b>Design:</b>	Wellbore #1	<b>Database:</b>	Landmark

#### Survey

Measured Depth (ft)	Inclination (°)	Azimuth (°)	Vertical Depth (ft)	+N/-S (ft)	+E/-W (ft)	Vertical Section (ft)	Dogleg Rate (°/100ft)	Build Rate (°/100ft)	Turn Rate (°/100ft)
1,909.0	16.40	230.80	1,884.3	-127.9	-183.3	223.3	0.61	-0.53	1.06
2,003.0	16.60	233.90	1,974.4	-144.2	-204.4	250.0	0.96	0.21	3.30
2,098.0	16.40	233.60	2,065.5	-160.1	-226.1	276.9	0.23	-0.21	-0.32
2,193.0	16.70	231.00	2,156.6	-176.7	-247.5	304.0	0.84	0.32	-2.74
2,288.0	16.80	229.60	2,247.5	-194.2	-268.6	331.3	0.44	0.11	-1.47
2,383.0	16.60	230.20	2,338.5	-211.7	-289.5	358.6	0.28	-0.21	0.63
2,477.0	17.20	231.80	2,428.5	-228.9	-310.7	385.9	0.81	0.64	1.70
2,571.0	17.50	228.90	2,518.2	-246.8	-332.3	413.9	0.97	0.32	-3.09
2,666.0	18.00	229.60	2,608.7	-265.7	-354.2	442.8	0.57	0.53	0.74
2,760.0	17.20	229.30	2,698.3	-284.2	-375.8	471.2	0.86	-0.85	-0.32
2,855.0	17.10	232.00	2,789.1	-302.0	-397.5	499.2	0.84	-0.11	2.84
2,949.0	20.00	233.80	2,878.2	-320.0	-421.4	529.1	3.14	3.09	1.91
3,043.0	17.10	233.10	2,967.3	-337.8	-445.4	559.0	3.09	-3.09	-0.74
3,138.0	17.60	228.90	3,057.9	-355.6	-467.4	587.3	1.42	0.53	-4.42
3,232.0	16.30	227.00	3,147.9	-373.9	-487.7	614.6	1.50	-1.38	-2.02
3,327.0	14.40	231.00	3,239.5	-390.5	-506.7	639.7	2.29	-2.00	4.21
3,421.0	16.10	234.50	3,330.2	-405.4	-526.4	664.4	2.06	1.81	3.72
3,515.0	15.30	231.70	3,420.7	-420.6	-546.7	689.8	1.17	-0.85	-2.98
3,610.0	15.20	232.60	3,512.3	-436.0	-566.4	714.8	0.27	-0.11	0.95
3,704.0	15.50	233.70	3,603.0	-450.9	-586.4	739.7	0.44	0.32	1.17
3,799.0	15.70	236.70	3,694.5	-465.5	-607.3	765.2	0.87	0.21	3.16
3,893.0	18.20	235.90	3,784.4	-480.7	-630.1	792.5	2.67	2.66	-0.85
3,987.0	18.20	235.70	3,873.7	-497.2	-654.4	821.8	0.07	0.00	-0.21
4,082.0	17.10	235.10	3,964.2	-513.5	-678.1	850.6	1.17	-1.16	-0.63
4,176.0	16.50	235.40	4,054.2	-529.0	-700.4	877.8	0.64	-0.64	0.32
4,271.0	16.60	233.90	4,145.2	-544.7	-722.5	904.8	0.46	0.11	-1.58
4,365.0	17.90	234.00	4,235.0	-561.1	-745.0	932.7	1.38	1.38	0.11
4,460.0	17.00	233.10	4,325.6	-578.0	-768.0	961.2	0.99	-0.95	-0.95
4,555.0	17.70	231.40	4,416.3	-595.3	-790.4	989.5	0.91	0.74	-1.79
4,649.0	17.60	232.90	4,505.9	-612.8	-812.9	1,018.0	0.50	-0.11	1.60
4,744.0	15.80	233.60	4,596.9	-629.2	-834.7	1,045.3	1.91	-1.89	0.74
4,838.0	12.10	234.70	4,688.1	-642.5	-853.1	1,067.9	3.95	-3.94	1.17
4,933.0	9.50	235.60	4,781.4	-652.6	-867.7	1,085.7	2.74	-2.74	0.95
5,027.0	7.30	232.50	4,874.4	-660.7	-878.8	1,099.4	2.39	-2.34	-3.30
5,121.0	6.10	229.60	4,967.8	-667.5	-887.4	1,110.4	1.33	-1.28	-3.09
5,216.0	5.10	227.00	5,062.3	-673.7	-894.3	1,119.6	1.09	-1.05	-2.74
5,310.0	3.60	230.10	5,156.0	-678.4	-899.6	1,126.7	1.61	-1.60	3.30
5,405.0	2.50	227.30	5,250.9	-681.8	-903.4	1,131.8	1.17	-1.16	-2.95
5,499.0	1.90	220.10	5,344.8	-684.3	-905.9	1,135.3	0.70	-0.64	-7.66
5,593.0	1.50	216.80	5,438.8	-686.5	-907.7	1,138.0	0.44	-0.43	-3.51
5,688.0	1.20	216.30	5,533.7	-688.3	-909.0	1,140.2	0.32	-0.32	-0.53
5,782.0	1.50	225.90	5,627.7	-690.0	-910.5	1,142.4	0.40	0.32	10.21
5,877.0	1.60	225.20	5,722.7	-691.8	-912.3	1,144.9	0.11	0.11	-0.74
5,955.0	0.84	239.96	5,800.7	-692.8	-913.6	1,146.6	1.05	-0.97	18.91
<b>DRILL TARGET BHL 2539'FNL, 1250'FEL</b>									
5,971.0	0.70	246.80	5,816.7	-692.9	-913.8	1,146.8	1.05	-0.88	42.85
6,067.0	0.50	273.10	5,912.7	-693.1	-914.7	1,147.7	0.35	-0.21	27.40
6,161.0	0.10	39.40	6,006.7	-693.0	-915.1	1,147.9	0.60	-0.43	134.36
6,255.0	0.40	31.00	6,100.7	-692.7	-914.9	1,147.5	0.32	0.32	-8.94
6,351.0	0.60	36.40	6,196.7	-692.0	-914.4	1,146.7	0.21	0.21	5.63
6,445.0	0.80	31.20	6,290.7	-691.0	-913.8	1,145.6	0.22	0.21	-5.53
6,540.0	1.30	23.60	6,385.6	-689.5	-913.0	1,144.1	0.55	0.53	-8.00
6,634.0	1.40	25.00	6,479.6	-687.5	-912.1	1,142.1	0.11	0.11	1.49
6,729.0	1.70	15.50	6,574.6	-685.1	-911.2	1,140.0	0.41	0.32	-10.00

<b>Company:</b>	EnCana Oil & Gas Weld County CO	<b>Local Co-ordinate Reference:</b>	Well Aristocrat Angus 6-4-10
<b>Project:</b>	SEC.10-T3N-R65W	<b>TVD Reference:</b>	WELL @ 4789.0ft (Original Well Elev)
<b>Site:</b>	Aristocrat Angus 6-4-10 Pad Sec.10-T3N-R65W	<b>MD Reference:</b>	WELL @ 4789.0ft (Original Well Elev)
<b>Well:</b>	Aristocrat Angus 6-4-10	<b>North Reference:</b>	True
<b>Wellbore:</b>	Wellbore #1	<b>Survey Calculation Method:</b>	Minimum Curvature
<b>Design:</b>	Wellbore #1	<b>Database:</b>	Landmark

Survey										
Measured Depth (ft)	Inclination (°)	Azimuth (°)	Vertical Depth (ft)	+N-S (ft)	+E-W (ft)	Vertical Section (ft)	Dogleg Rate (°/100ft)	Build Rate (°/100ft)	Turn Rate (°/100ft)	
6,824.0	2.30	8.20	6,669.5	-681.8	-910.5	1,137.5	0.68	0.63	-7.68	
6,918.0	2.60	8.10	6,763.4	-677.8	-910.0	1,134.6	0.32	0.32	-0.11	
7,013.0	2.70	20.80	6,858.3	-673.6	-908.9	1,131.2	0.63	0.11	13.37	
7,107.0	2.20	30.90	6,952.2	-670.0	-907.2	1,127.7	0.70	-0.53	10.74	
7,201.0	1.40	33.00	7,046.2	-667.5	-905.6	1,124.9	0.85	-0.85	2.23	
7,296.0	1.50	49.40	7,141.2	-665.7	-904.0	1,122.6	0.45	0.11	17.26	
7,390.0	1.40	31.50	7,235.1	-663.9	-902.5	1,120.3	0.49	-0.11	-19.04	
7,485.0	1.00	352.50	7,330.1	-662.1	-902.0	1,118.8	0.93	-0.42	-41.05	
7,579.0	1.00	8.60	7,424.1	-660.5	-902.0	1,117.8	0.30	0.00	17.13	
7,673.0	1.00	345.60	7,518.1	-658.9	-902.1	1,116.9	0.42	0.00	-24.47	
7,768.0	0.80	347.20	7,613.1	-657.4	-902.4	1,116.3	0.21	-0.21	1.68	
7,805.0	1.10	346.50	7,650.1	-656.8	-902.6	1,116.0	0.81	0.81	-1.89	
7,850.0	1.10	346.50	7,695.1	-656.0	-902.8	1,115.7	0.00	0.00	0.00	
Projection to TD - HARDLINE 100'S OF AA 6-4-10 BHL										

Wellbore Targets										
Target Name	Dip Angle (°)	Dip Dir. (°)	TVD (ft)	+N/-S (ft)	+E/-W (ft)	Northing (ft)	Easting (ft)	Latitude		Longitude
- hit/miss target										
- Shape										
DRILL TARGET BHL	0.00	0.00	5,800.0	-714.6	-941.5	1,331,465.69	3,238,862.27	40° 14' 24.390 N		104° 38' 39.705 W
- survey misses by 35.5ft at 5955.0ft MD (5800.7 TVD, -692.8 N, -913.6 E)										
- Point										
HARDLINE 100'S OF	0.00	0.00	7,699.0	-814.6	-1,041.5	1,331,364.77	3,238,763.25	40° 14' 23.402 N		104° 38' 40.994 W
- survey misses by 210.8ft at 7850.0ft MD (7695.1 TVD, -656.0 N, -902.8 E)										
- Polygon										
Point 1			7,699.0	0.0	0.0	1,331,364.77	3,238,763.25			
Point 2			7,699.0	0.0	200.0	1,331,366.71	3,238,963.23			

Survey Annotations					
Measured Depth (ft)	Vertical Depth (ft)	Local Coordinates			
		+N/-S (ft)	+E/-W (ft)	Comment	
7,850.0	7,695.1	-656.0	-902.8	Projection to TD	

Checked By: \_\_\_\_\_ Approved By: \_\_\_\_\_ Date: \_\_\_\_\_